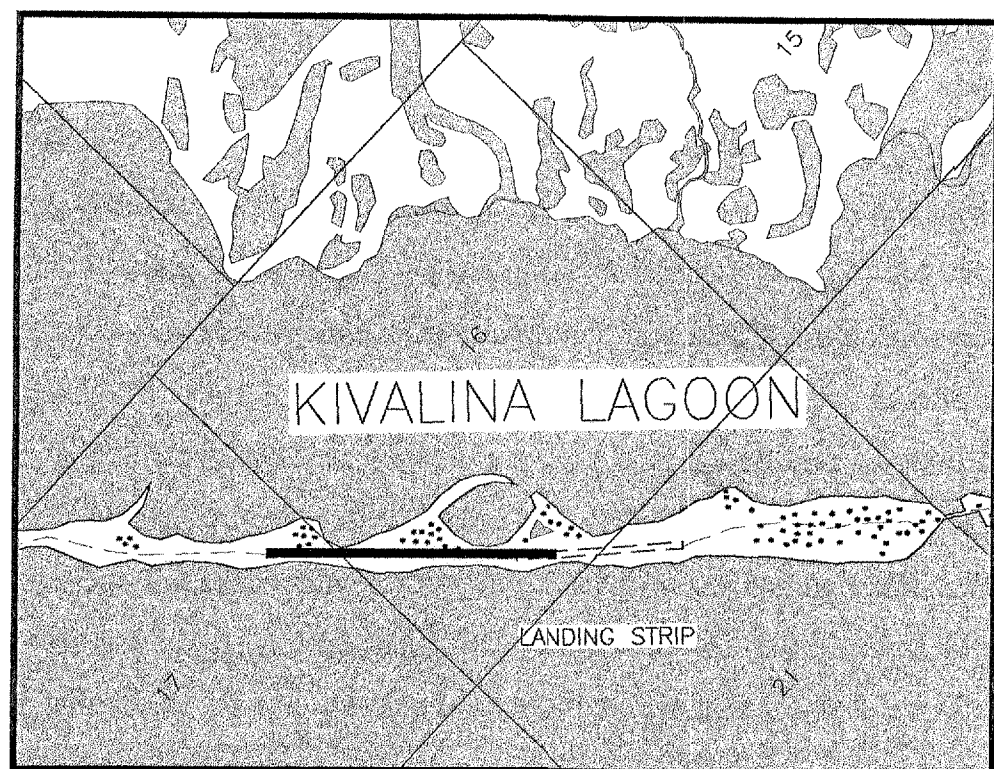
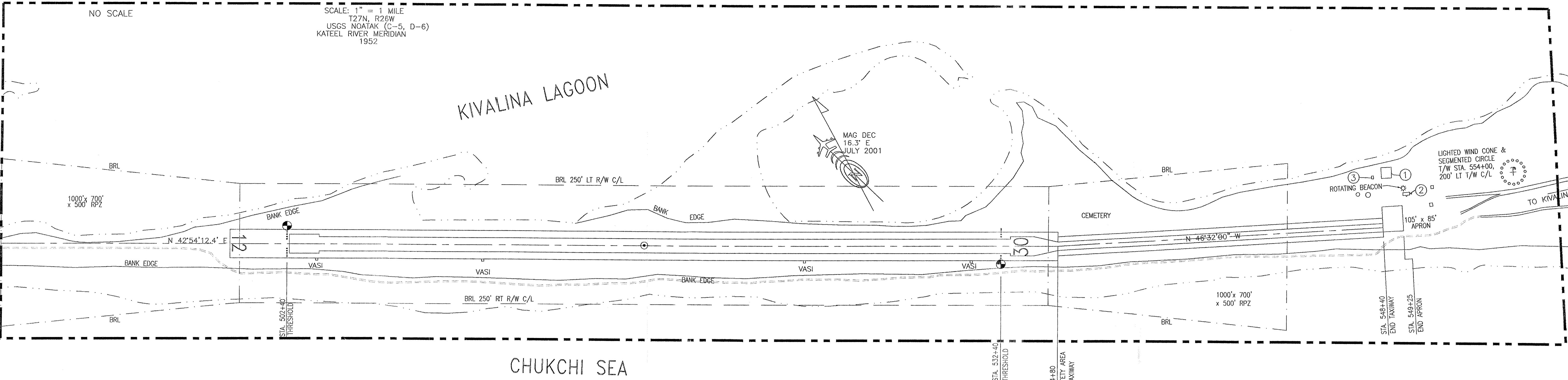


LOCATION MAP



VICINITY MAP



AIRPORT DATA		
	EXISTING	ULTIMATE
AIRPORT ELEVATION (MSL) (NAVD88)	13'	
AIRPORT REFERENCE CODE	A-1	
MEAN DAILY MAX. TEMP. HOTTEST MONTH (JULY)	52°	
TAXIWAY LIGHTING	MITL	
RAMP LIGHTING	NONE	
NAVIGATION AIDS	BEACON	BEACON, OPS
COMMUNICATION AIDS	NONE	
AIRPORT REFERENCE POINT (ARP)	LAT. 67° 44' 10.15" N LONG. 164° 33' 48.58" W	
THRESHOLD 12 STA. 502+40	LAT. 67° 44' 20.95" N LONG. 164° 34' 15.07" W	
THRESHOLD 30 STA. 532+40	LAT. 67° 43' 59.34" N LONG. 164° 33' 22.10" W	

- NOTES:
- NO OFZ OBJECT PENETRATIONS.
  - NO THRESHOLD SITING SURFACE OBJECT PENETRATIONS.
  - TAXIWAY DESIGNED TO APPROACH DESIGN GROUP II STANDARDS.

RUNWAY DATA		
	EXISTING	ULTIMATE
% WIND COVERAGE	NO DATA	
INSTRUMENT RUNWAY	NONE	
RUNWAY SURFACE TYPE	GRAVEL	
PAVEMENT STRENGTH	N/A	
APPROACH SURFACES	20:1	
APPROACH VISIBILITY MINIMUM	1 MILE	
RUNWAY LIGHTING	MIRL	
RUNWAY MARKING	NONE	
VISUAL APPROACH AIDS	VASI	
R/W DIMENSIONS	3000' X 60'	
R/W SAFETY AREA	3480' X 120'	
R/W OBJECT FREE AREA (ROFA)	3480' X 400'	
R/W OBSTACLE FREE ZONE (ROFZ)	3400' X 400'	
T/W DIMENSIONS	1363' X 35'	
T/W SAFETY AREA WIDTH	79'	
T/W OFA WIDTH	131'	

NONSTANDARD CONDITIONS			
ITEM	STANDARD	EXISTING	ULTIMATE
LANDFILL SEPARATION	5,000'	1850'	RELOCATION
RUNWAY 12 VASI	RUNWAY LEFT	RUNWAY RIGHT	RELOCATION

LEGEND		
	EXISTING	ULTIMATE
PROPERTY LINE	---	---
BUILDING RESTRICTION LINE (B.R.L.)	---	---
DEVELOPMENT	---	---
WIND CONE & SEGMENTED CIRCLE	⊙	⊙
WIND CONE ONLY	⊙	⊙
BUILDING	▭	▭
ROADWAY	---	---
FENCING	---	---
AIRPORT REFERENCE POINT	⊙	⊙
ROTATING BEACON	⊙	⊙
THRESHOLD	---	---
PRIMARY MONUMENT	⊙	⊙

BUILDINGS TABLE	
NUMBER	ITEM
1	SNOW REMOVAL EQUIPMENT BUILDING
2	TERMINAL & ELECTRICAL EQUIPMENT ENCLOSURE BUILDING
3	ULTIMATE ELECTRICAL EQUIPMENT ENCLOSURE BUILDING

NO WIND DATA AVAILABLE

DESIGN	EJG
DRAWN	CAT/KG
CHECKED	CML
CAT	7-14-99 AS-BUILT
BY	DATE
DATE	REVISIONS

STATE OF ALASKA  
DEPARTMENT OF TRANSPORTATION AND PUBLIC FACILITIES  
NORTHERN REGION

APPROVED *Patricia D. Miller* DATE 8/28/01  
PATRICIA D. MILLER, P.E. DESIGN GROUP CHIEF

AIRPORT LAYOUT PLAN APPROVED  
BY LETTER DATED: Aug 29 2001  
*Barbara Johnson*  
AIRPORTS DIVISION,  
ALASKAN REGION, AAL-620  
AIRSPACE REVIEW #01AAL-048NRA

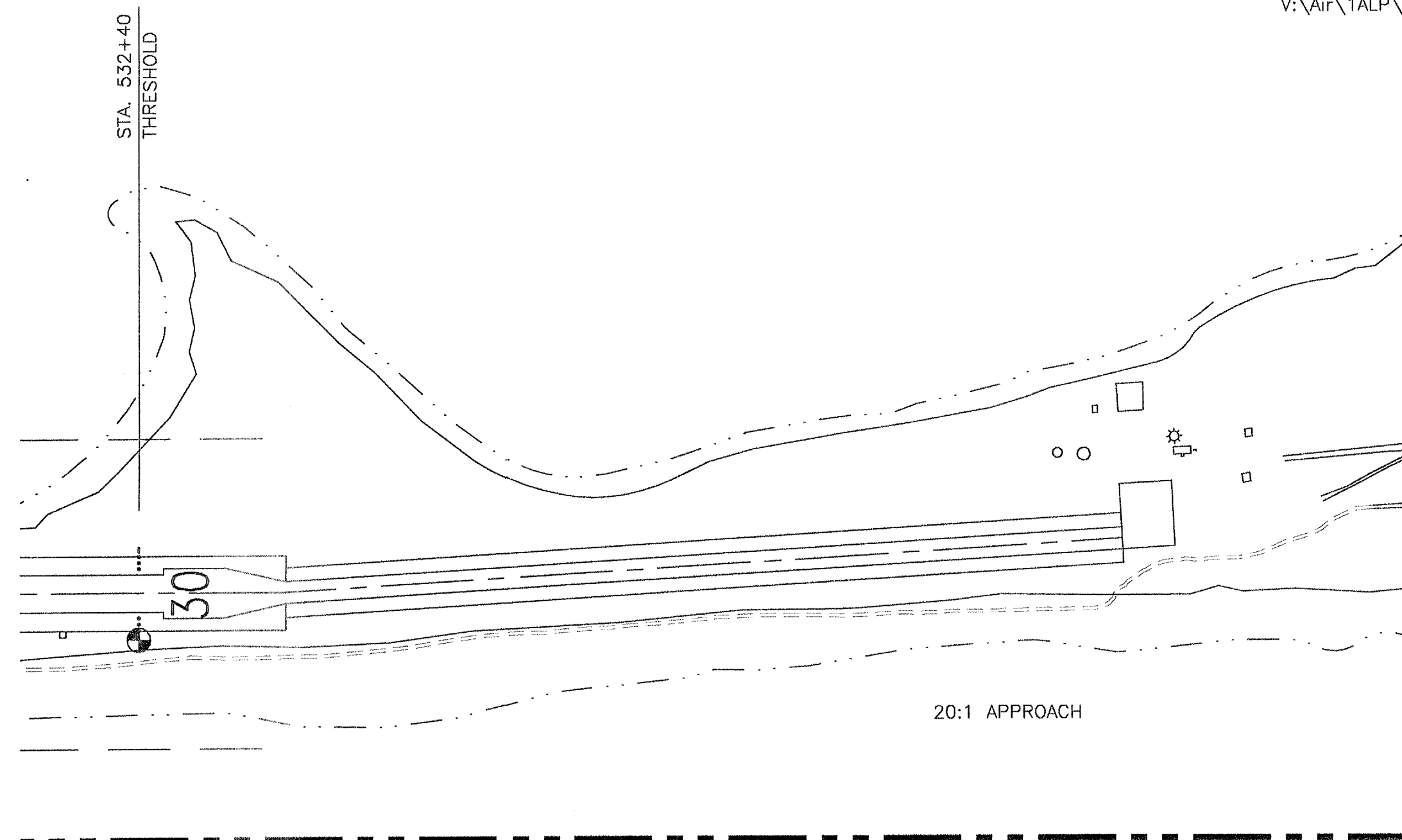
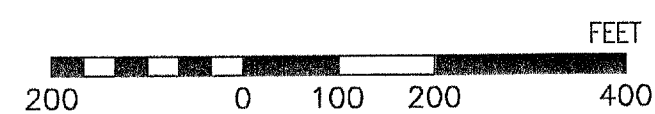
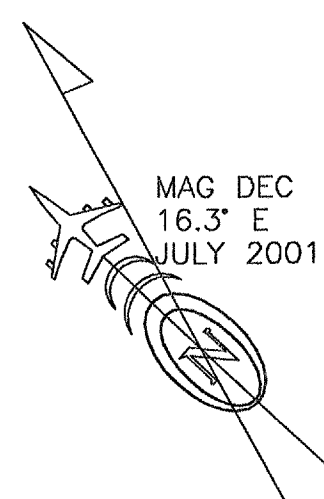
600 0 200 400 FEET

THIS ALP WAS PREPARED FROM THE PREVIOUS ALP, AND FROM AS-BUILTS DATED 1990.

THIS ALP SUPERSEDES ALP DATED 2/1/85 REVISED THROUGH 10/11/90, AND FAA APPROVED ON 2/8/85.

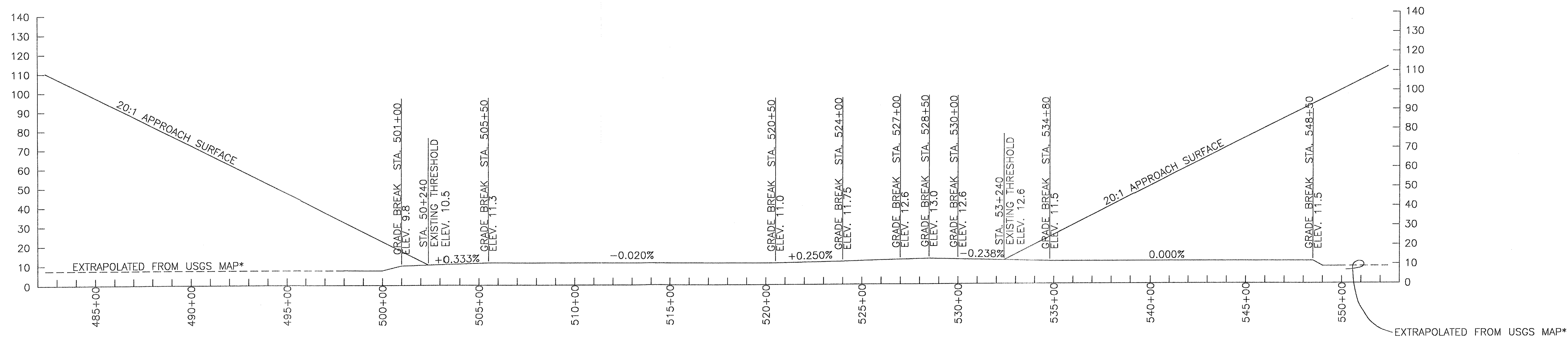
KIVALINA AIRPORT  
AIRPORT LAYOUT PLAN

SHEET 1 OF 3



RUNWAY 12 - APPROACH PLAN

RUNWAY 30 - APPROACH PLAN



RUNWAY 12-30 PROFILE

\* USGS NOATAK (C-5&D-6) KATEEL RIVER MERIDIAN, 1952

DATA BASE CONTROL YEAR: NAD 83

DESIGN E.J.G.

DRAWN CAT

CHECKED G.M.L.

BY	DATE	REVISIONS

STATE OF ALASKA  
DEPARTMENT OF TRANSPORTATION AND PUBLIC FACILITIES  
NORTHERN REGION

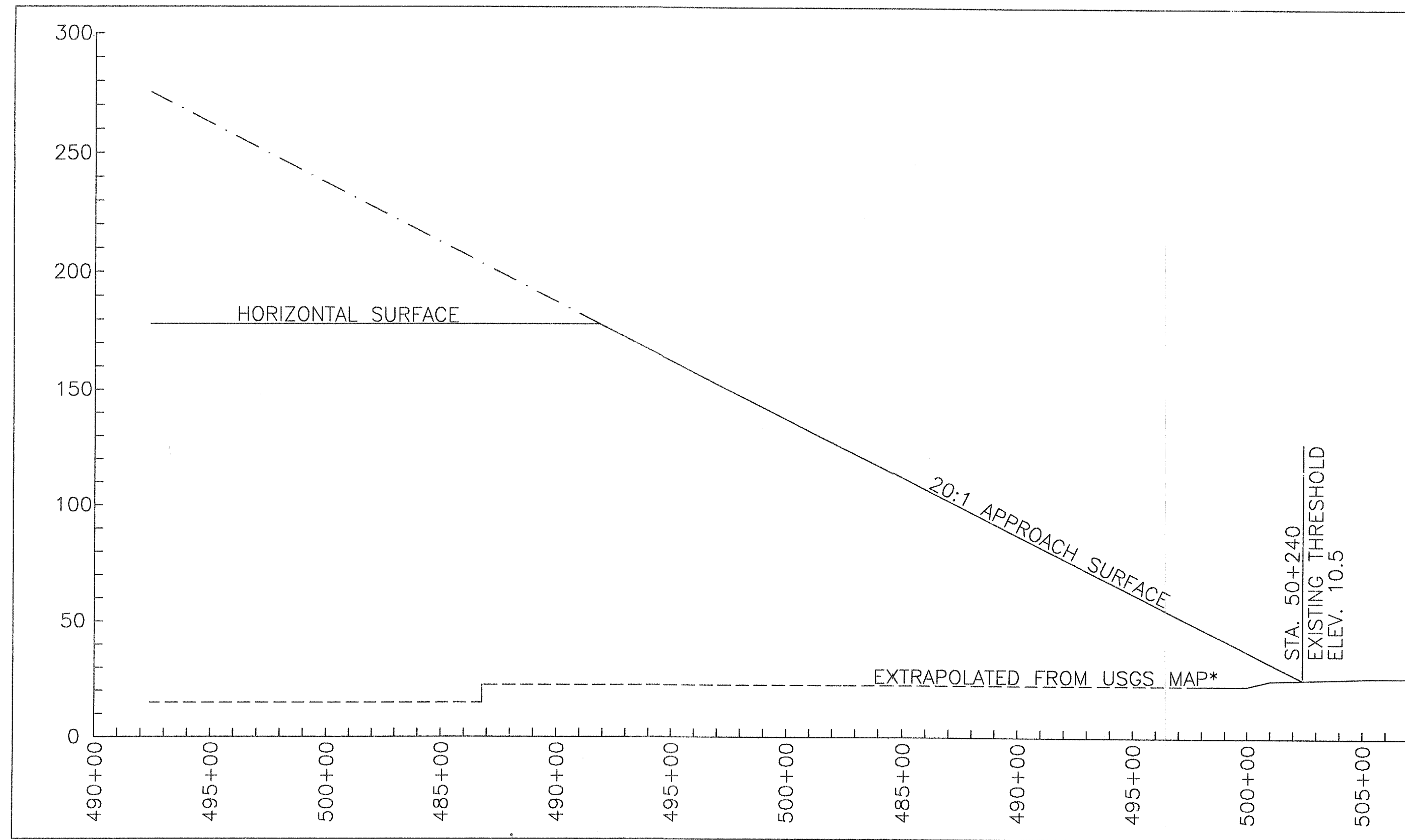
APPROVED *Patricia D. Miller* DATE *8/21/01*  
PATRICIA D. MILLER, P.E. DESIGN GROUP CHIEF

AIRPORT LAYOUT PLAN APPROVED  
BY LETTER DATED: *Aug 29, 2001*

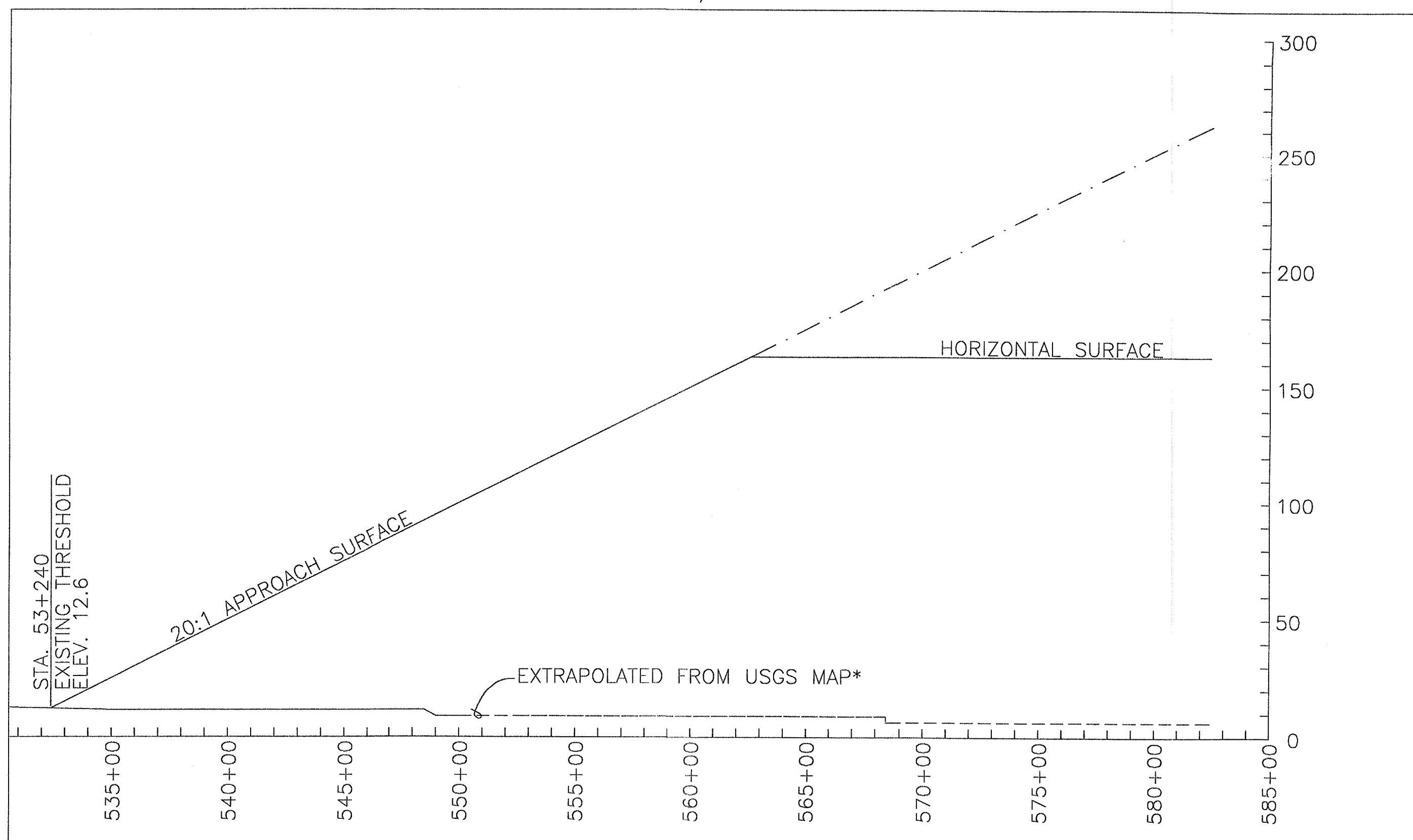
*Barbara Johnson*  
AIRPORTS DIVISION,  
ALASKAN REGION, AAL-620  
AIRSPACE REVIEW #01AAL-048NRA

KIVALINA AIRPORT  
INNER PORTION OF THE APPROACH  
SURFACE PLANS & PROFILE

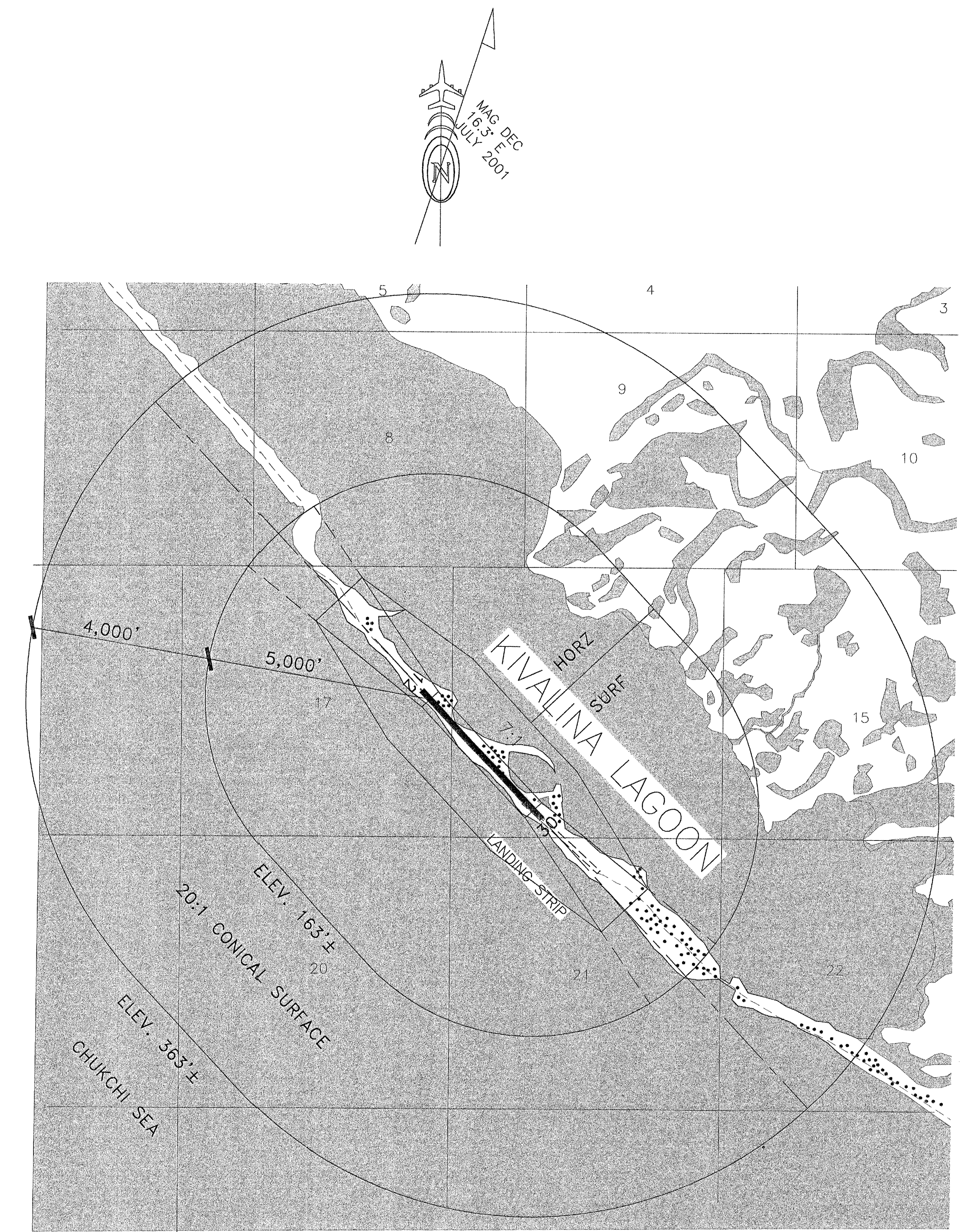
SHEET  
2 OF  
3



APPROACH SURFACE COMPOSITE PROFILE  
R/W 12:



APPROACH SURFACE COMPOSITE PROFILE  
R/W 30:



SEC. 27N, R26W  
KATEEL RIVER MERIDIAN, ALASKA 1952  
\* USGS NOATAK (C-5, D-6)

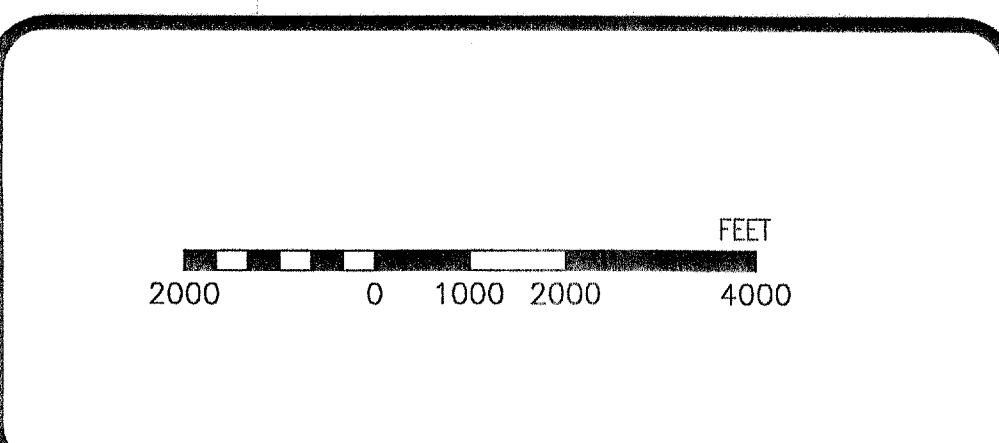
NOTE:  
REFER TO THE INNER PORTION OF THE  
APPROACH SURFACE PLAN VIEW DETAILS  
FOR CLOSE-IN OBSTRUCTIONS.

DESIGN_EJG		
DRAWN_CAT		
CHECKED_CML		
BY	DATE	REVISIONS

STATE OF ALASKA  
DEPARTMENT OF TRANSPORTATION AND PUBLIC FACILITIES  
NORTHERN REGION

APPROVED *Patricia D. Miller* DATE *8/28/01*  
PATRICIA D. MILLER, P.E. DESIGN GROUP CHIEF

AIRPORT LAYOUT PLAN APPROVED  
BY LETTER DATED: *Aug 29 2001*  
*Barbara Johnson*  
AIRPORTS DIVISION,  
ALASKAN REGION AAL-620  
AIRSPACE REVIEW #01AAL-048NRA



KIVALINA AIRPORT AIRSPACE  
AND COMPOSITE  
APPROACH PROFILES

SHEET  
3 OF  
3