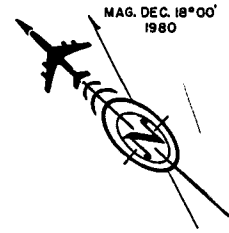
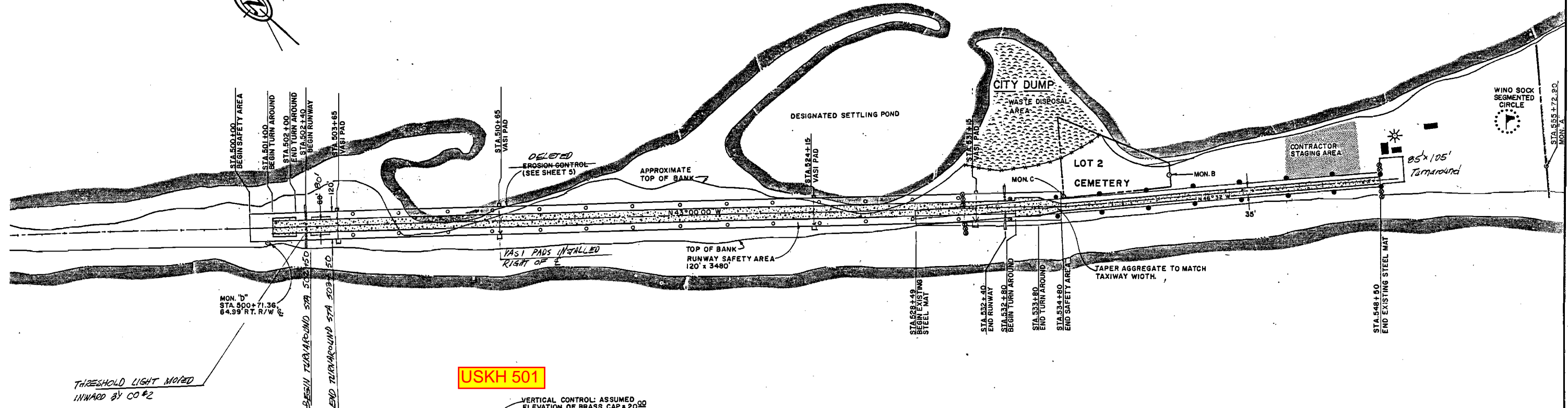


KIVALINA LAGOON

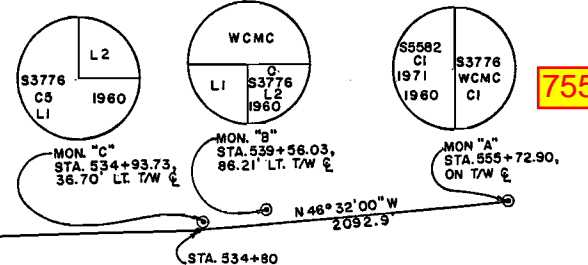


SEE SHEET 6 OF 16 FOR MATERIAL SITE LOCATIONS.

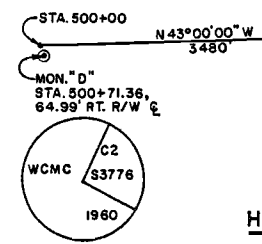


USKH 501

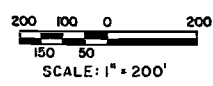
CHUKCHI SEA



755



HORIZONTAL AND VERTICAL CONTROL
NO SCALE



- LEGEND**
- CONSTRUCT 60' x 3000' RUNWAY AND RESURFACE EXISTING STEEL MAT TO MAKE 35' x 1370' TAXIWAY.
 - INSTALL RUNWAY LIGHTING.
 - CHANGE EXISTING RUNWAY LIGHTING TO TAXIWAY LIGHTING.
 - REMOVE EXISTING LIGHTING.
 - BRASS CAP.
 - PROPERTY LINE.
 - EXISTING FENCE.
 - EXISTING BUILDING.
 - CONTRACTOR STAGING AREA.
 - WASTE DISPOSAL AREA.

DESIGN <i>ASG</i>			
DRAWN <i>cat</i>			
CHECKED <i>pea</i>			
BY	DATE	REVISIONS	

STATE OF ALASKA
DEPARTMENT OF TRANSPORTATION AND PUBLIC FACILITIES
NORTHERN REGION - DESIGN AND CONSTRUCTION - AVIATION

APPROVED *Daniel D. Urbach* DATE *6-12-85*
DANIEL D. URBACH, P.E. CHIEF AVIATION DESIGN GROUP



KIVALINA AIRPORT
KIVALINA AIRPORT RELOCATION
A.L.P. No. 3-02-0160-01 0152-01
PROJECT No. D21332
PROJECT LAYOUT PLAN

SHEET
2
OF
16