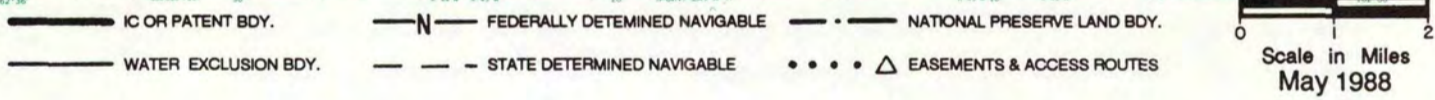
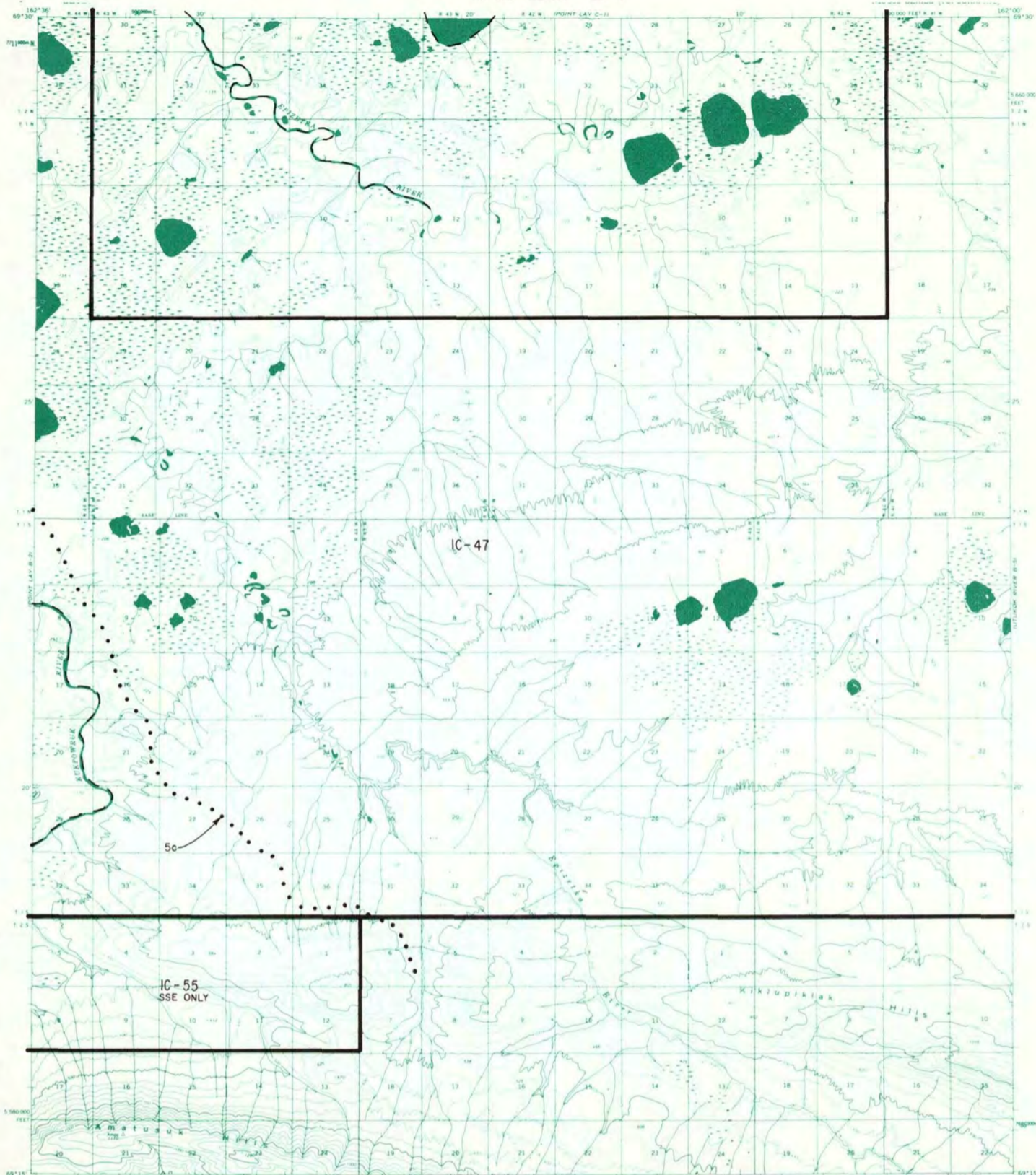


**RESERVED EASEMENTS**

- EIN 1** A twenty-five (25) foot trail easement for use by the public to gain access to and from public land via the winter trail along the coast between Barrow and Kotzebue.
- EIN 15a** A fifty (50) foot trail easement for use by the public to gain access to and from public land, at the southerly boundary of the military (Public Land Order 3780) in T. 5 S., R. 50 W., U.M., proceeding in a southerly direction to public land.
- EIN 15b** A fifty (50) foot trail easement for use by the public to gain access to and from public land, at the southerly boundary of the military withdrawal (Public Land Order 3780) in T. 5 S., R. 50 W., U.M., following Kahkatak Creek easterly to public land.

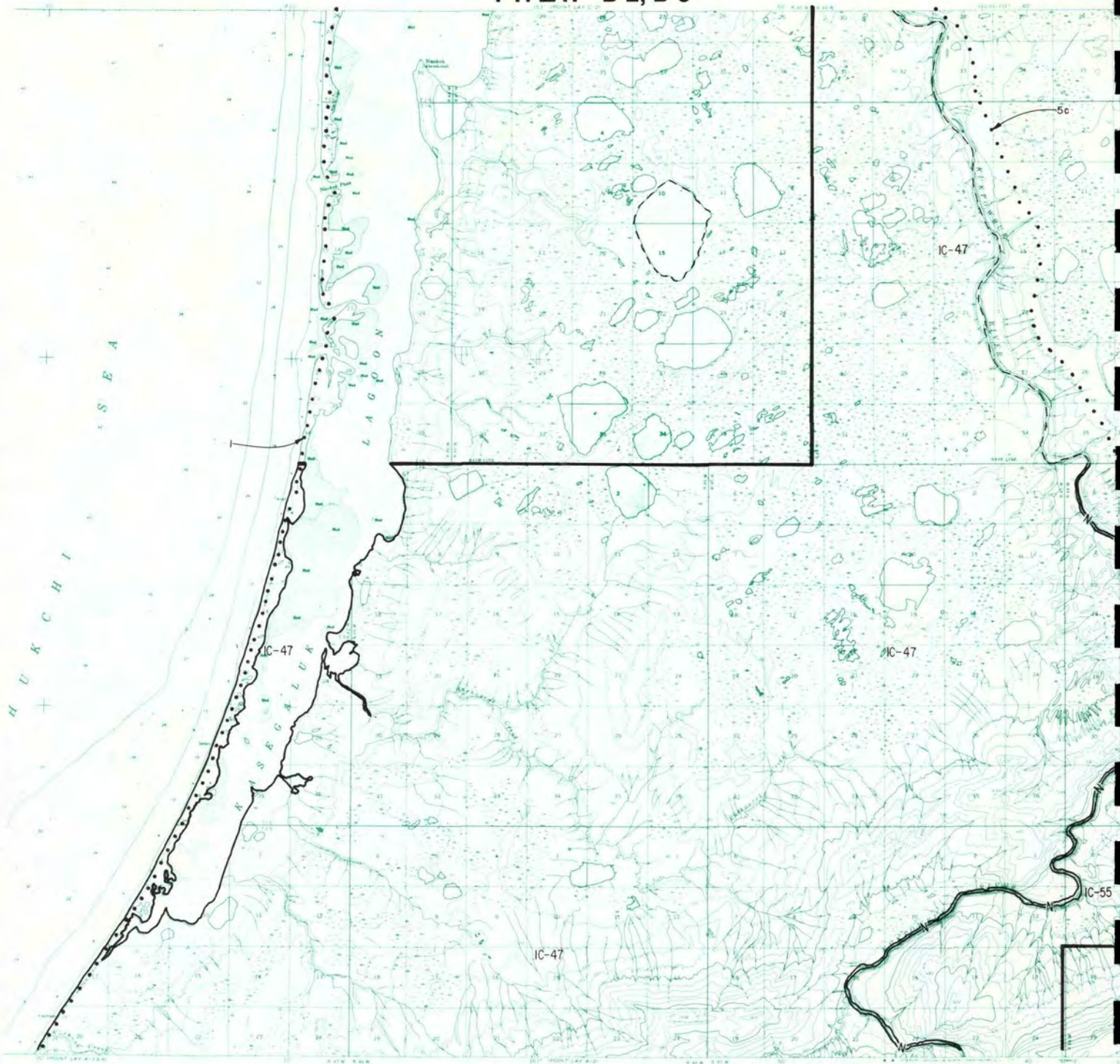
PT. LAY B-1



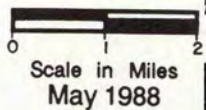
**RESERVED EASEMENTS**

**EIN 5c** A trail easement fifty (50) feet in width for use by the public to gain access to and from public land. This segment branches from EIN 5 in Section 30 of T. 3 N., R. 44 N., U.M. and follows the right bank (looking downstream) of the Kukpowruk River northwest to its mouth and south to public land.

PT. LAY B-2, B-3



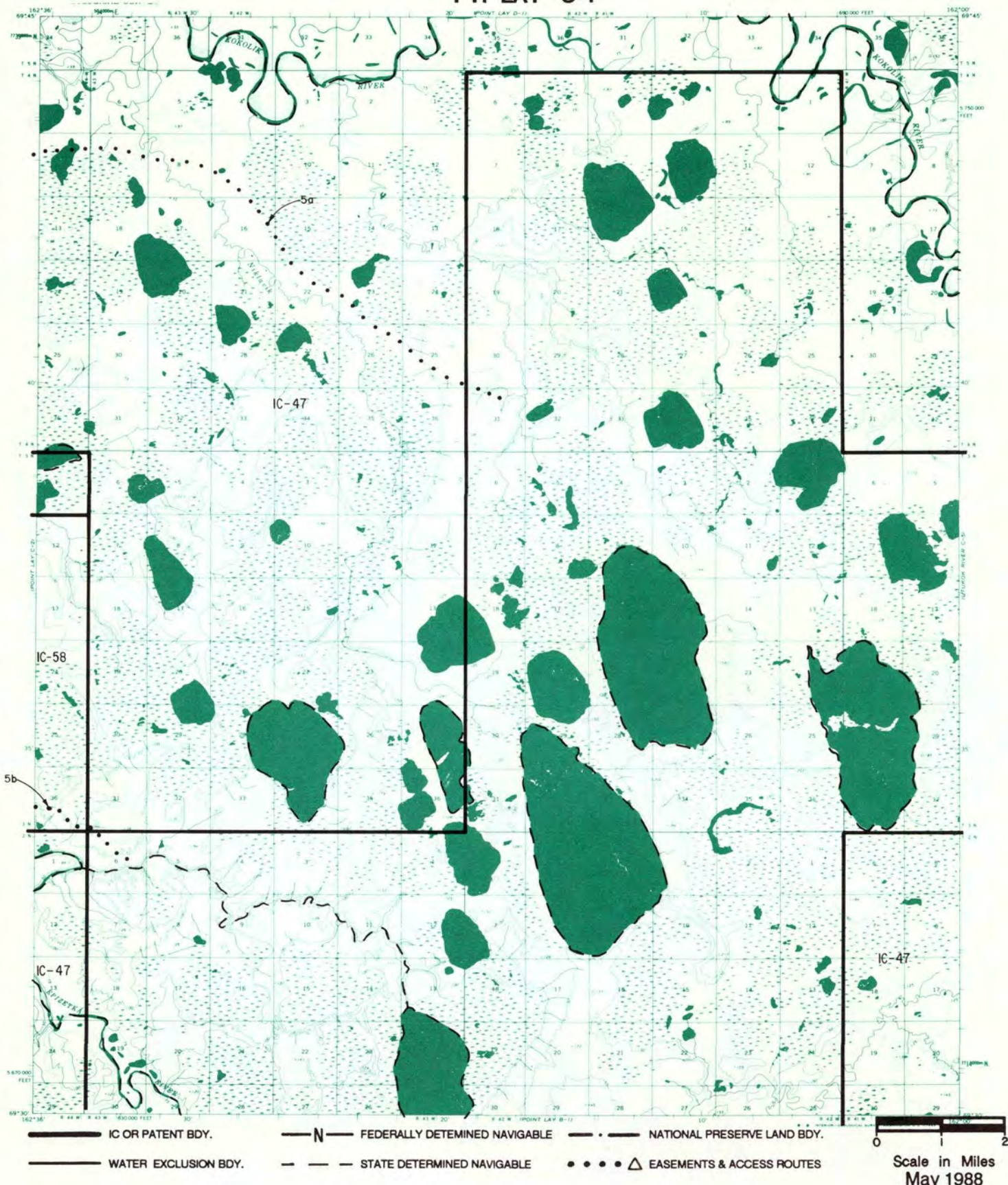
- |                      |                                |                             |
|----------------------|--------------------------------|-----------------------------|
| IC OR PATENT BDY.    | FEDERALLY DETERMINED NAVIGABLE | NATIONAL PRESERVE LAND BDY. |
| WATER EXCLUSION BDY. | STATE DETERMINED NAVIGABLE     | EASEMENTS & ACCESS ROUTES   |



**RESERVED EASEMENTS**

- EIN 1** A trail easement twenty-five (25) feet in width for a trail for use by the public to gain access to and from public land to the north and south. The easement generally parallels the coastline.
- EIN 5c** A trail easement fifty (50) feet in width an a trail system for use by the public to gain access to and from public land. Beginning at EIN 5 in Section 30, T. 3 N., R. 44 W., U.M., it cuts southwesterly and follows the right bank (looking downstream) of the Kukpowruk River to public land.

PT. LAY C-1

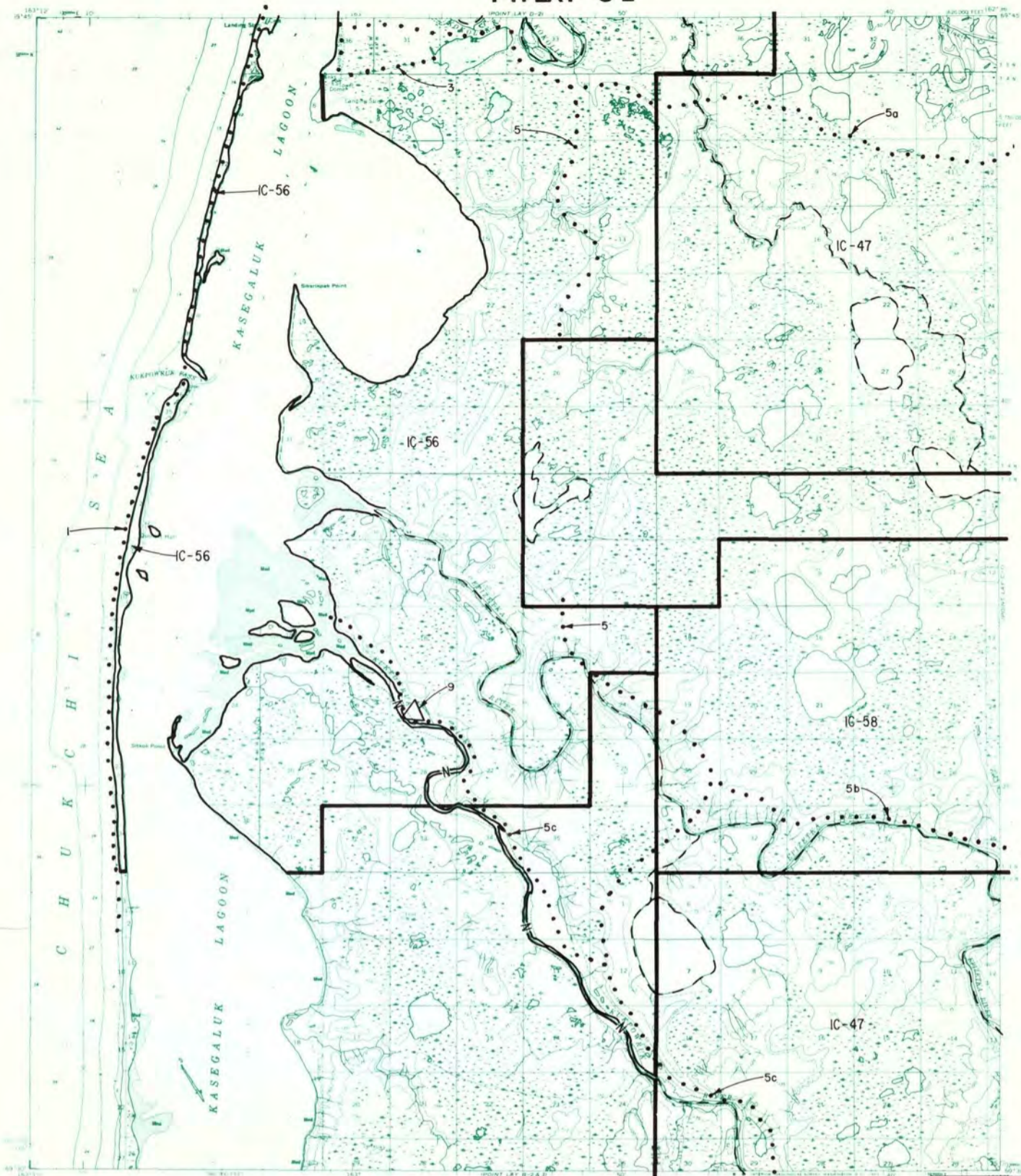


**RESERVED EASEMENTS**

- EIN 5a** A trail easement fifty (50) feet in width on a trail system for use by the public to gain access to and from public land. The segment begins at Pt. Lay and runs southerly to the Epizetka River. In Section 30 of T. 3 N., R. 44 W., U.M., the trail system branches into EIN 5b and 5c.
- EIN 5b** A trail easement fifty (50) feet in width on a trail system for use by the public to gain access to and from public land. This segment branches from EIN 5a in Section 30 of T. 3 N., R 44 W., U.M. and follows the Epizetna River to public land.



PT. LAY C-2



IC OR PATENT BDY.     
  FEDERALLY DETERMINED NAVIGABLE     
  NATIONAL PRESERVE LAND BDY.

WATER EXCLUSION BDY.     
  STATE DETERMINED NAVIGABLE     
   EASEMENTS & ACCESS ROUTES

0 1  
 Scale in Miles  
 May 1988

**RESERVED EASEMENTS**

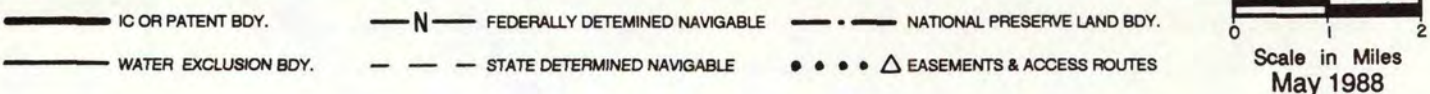
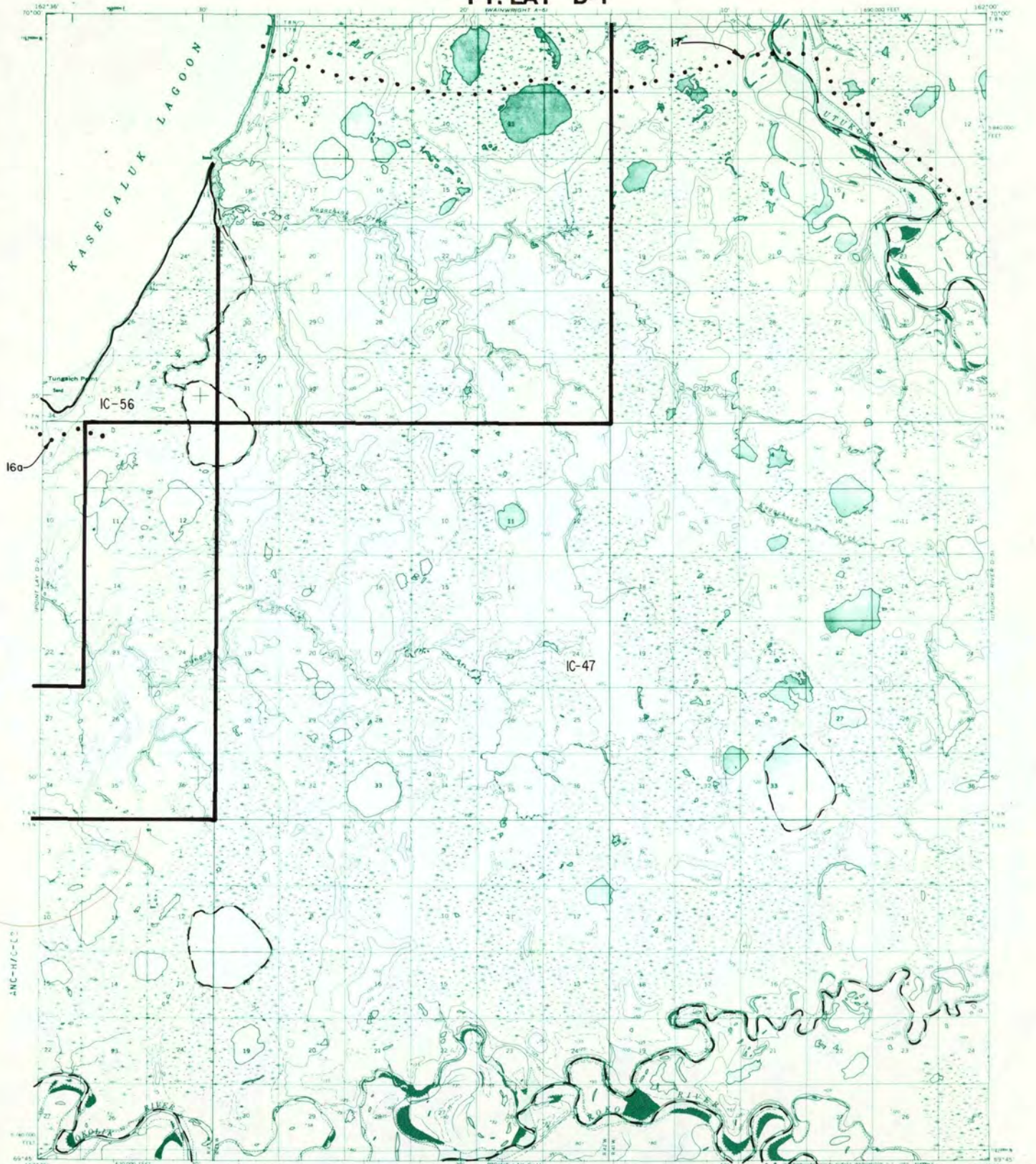
- EIN 1**      A trail easement twenty-five (25) feet in width for a trail for use by the public to gain access to and from public land to the north and south. The easement generally parallels the coastline.
- EIN 3**      A road easement sixty (60) feet in width for a road for use by the public to gain access to and from the Point Lay Dew Station, Point Lay, and the Pt. Lay water supply.
- EIN 5**      A trail easement fifty (50) feet in width on a trail system for use by the public to gain access to and from public land. Beginning at Point Lay and running southerly to the Epizetka River, in Section 30 of T. 3 N., R. 44 W., U.M.
- EIN 5a**      A trail easement fifty (50) feet in width on a trail system for use by the public to gain access to and from public land. The segment begins at Point Lay and runs southerly to the Epizetka River. In Section 30 of T. 3 N., R. 44 W., U.M., the trail system branches into EIN 5b and 5c.
- EIN 5b**      A trail easement fifty (50) feet in width on a trail system for use by the public to gain access to and from public land. This segment branches from EIN 5a in Section 30 of T. 3 N., R. 44 W., U.M. and follows the Epizetka River.

Continued Next Page

**EIN 5c** Segment 5c branches from EIN 5 in Section 30 of T. 3 N., R. 44 W., U.M. and follows the right bank (looking downstream) of the Kukpowruk River northwest to its mouth and south to public land.

**EIN 9** A site easement for camping, vehicle use and staging, located on the right bank (looking downstream) of the Kukpowruk River in Section 21, T. 3 N., R. 45W., U.M. The easement extends twenty-five (25) feet into the water. The portion of the easement on the bed of the river is in addition to the one (1) acre on the land.

PT. LAY D-1

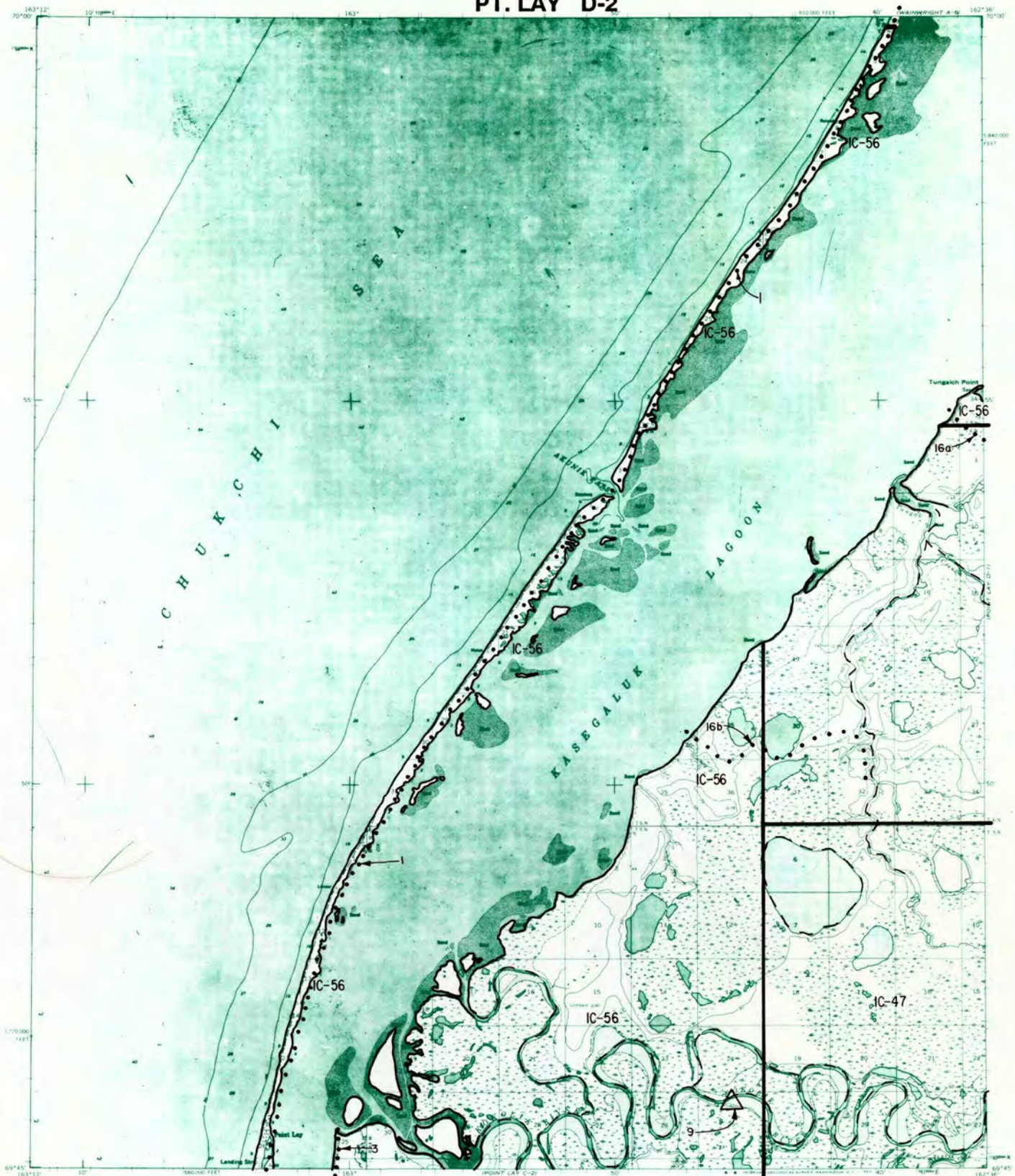


**RESERVED EASEMENTS**

- EIN 16a** A trail easement twenty-five (25) feet in width beginning on the coast just south of Tungaich Point and then proceeding easterly to public land.
- EIN 17** A trail easement fifty (50) feet in width for use by the public to gain access from the arctic coast to and from public land in the Utukok River area north of Point Lay. The trail begins near triangulation station 46 (named Sexon) in T. 7 N., R. 42 W., U.M.



PT. LAY D-2



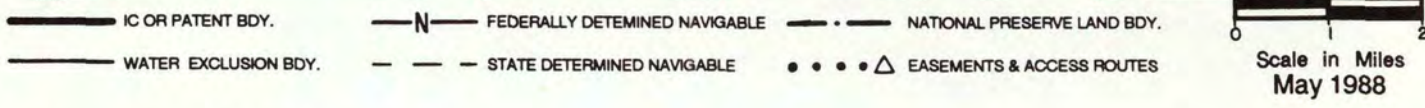
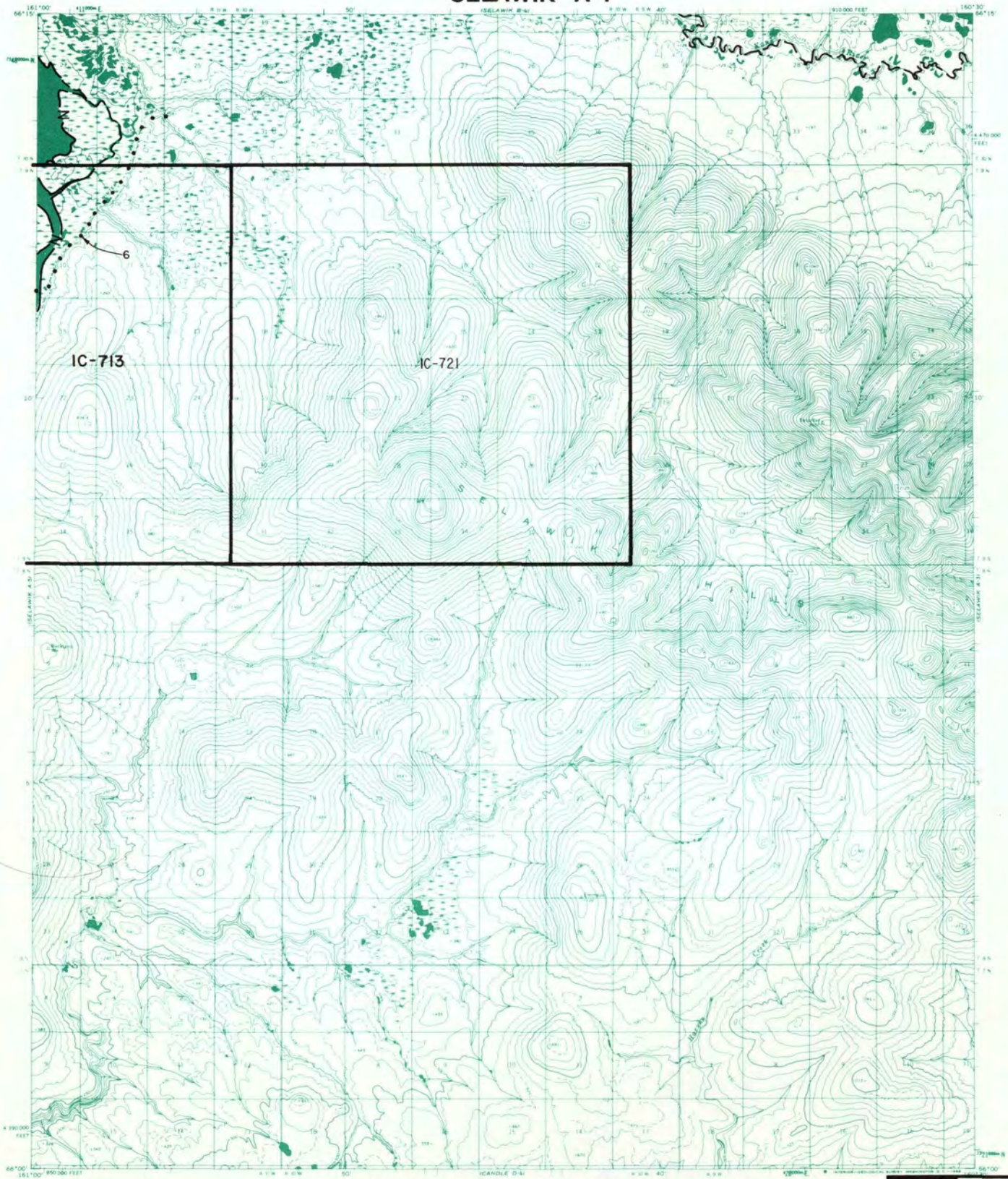
- IC OR PATENT BDY.
- N — FEDERALLY DETERMINED NAVIGABLE
- . . . — NATIONAL PRESERVE LAND BDY.
- WATER EXCLUSION BDY.
- — STATE DETERMINED NAVIGABLE
- • • • Δ EASEMENTS & ACCESS ROUTES

Scale in Miles  
May 1988

**RESERVED EASEMENTS**

- EIN 1** An trail easement twenty-five (25) feet in width for a trail for use by the public to gain access to and from public land to the north and south. The easement generally parallels the coastline.
- EIN 3** A road easement sixty (60) feet in width for a road for use by the public to gain access to and from the Point Lay Dew Station, Point Lay, and the Pt. Lay water supply.
- EIN 9** A site easement, for camping and vehicle use, is located in Section 25, T. 5 N., R. 44 W., U.M. on the left bank (looking downstream) of the Kokalik River. The site easement extends twenty-five (25) feet into the water. The portion of the easement on the bed of the river is in addition to the one (1) acre on the land.
- EIN 16a** A trail easement twenty-five (25) feet in width beginning on the coast just south of Tungaich Point and proceeding easterly to public land.
- EIN 16b** A trail easement twenty-five (25) feet in width beginning approximately eight (8) miles south of Tungaich Point proceeding easterly to public land.

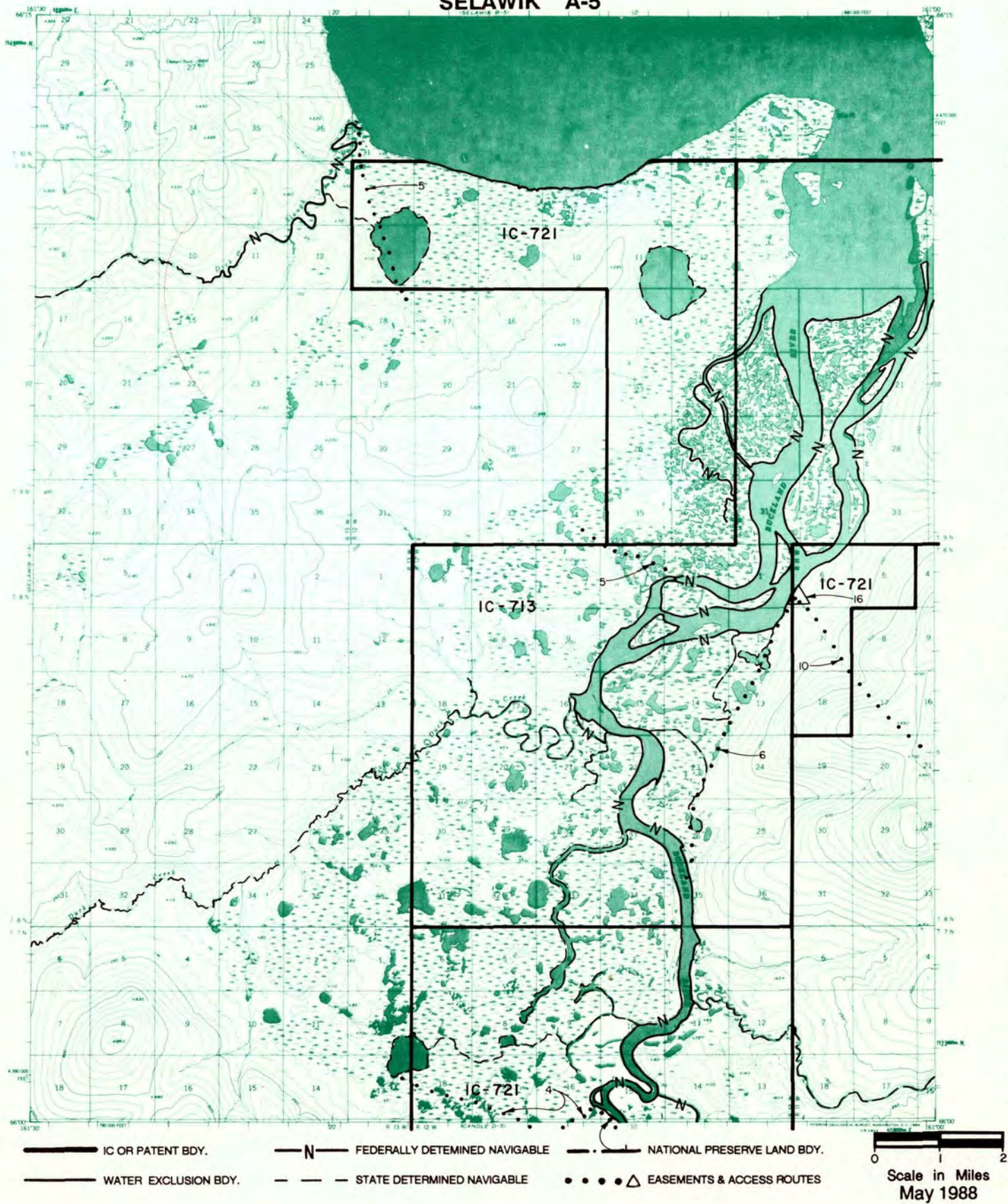
# SELAWIK A-4



## RESERVED EASEMENTS

**EIN 6**      An easement twenty-five (25) feet in width for an access trail from the Buckland River in Section 35, T. 8 N., R. 12 W., K.R.M., northerly to public land. The season of use is limited to winter.

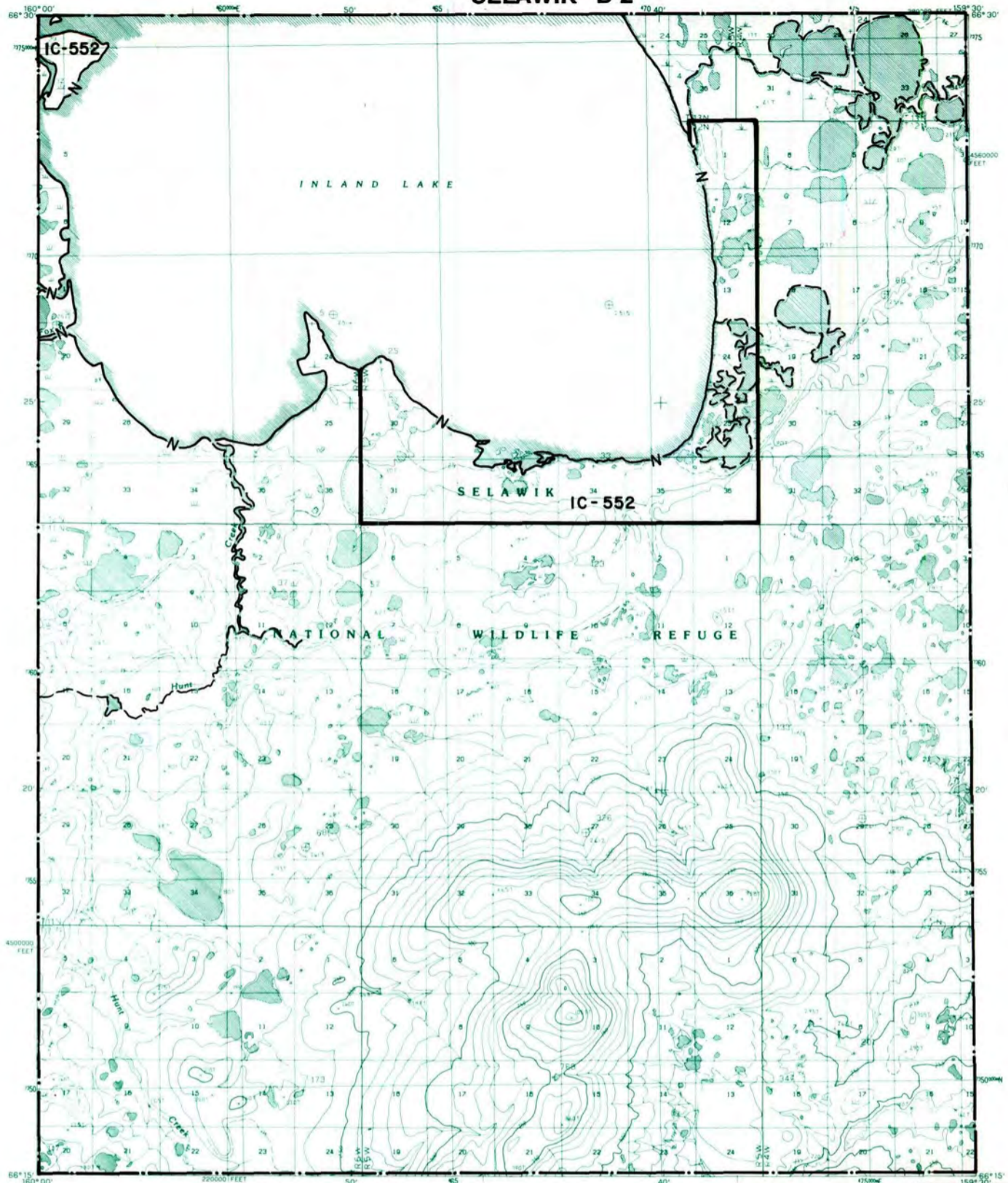
# SELAWIK A-5



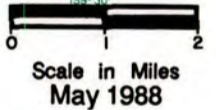
## RESERVED EASEMENTS

- EIN 1** An easement twenty-five (25) feet in width for an access trail in Section 15, T. 7 N., R. 12 W., K.R.M., southerly to public land.
- EIN 4** An easement twenty-five (25) feet in width for an access trail in Section 15, T. 7 N., R. 12 W., K.R.M., westerly to public land. The season of use is limited to winter.
- EIN 5** An easement twenty-five (25) feet in width for an access trail from the trail junction located on the Buckland River in Section 15, T. 7 N., R. 12 W., K.R.M., northerly to public land. The season of use is limited to winter.
- EIN 6** An easement twenty-five (25) feet in width for an access trail from the Buckland River in Section 35, T. 8 N., R. 12 W., K.R.M., northerly to public land. The season of use is limited to winter.
- EIN 10** An easement fifty (50) feet in width for an access trail from site EIN 16 in Section 6, T. 8 N., R. 11 W., K.R.M., southeasterly to public land. The winter uses allowed are those listed for a fifty (50) foot wide trail easement. The summer uses allowed are those listed for a twenty-five (25) foot wide trail easement.
- EIN 16** A one (1) acre site easement upland of the ordinary high water mark on the right bank (looking downstream) of the Buckland River in Section 6, T. 8 N., R. 11 W., K.R.M.

# SELAWIK B-2



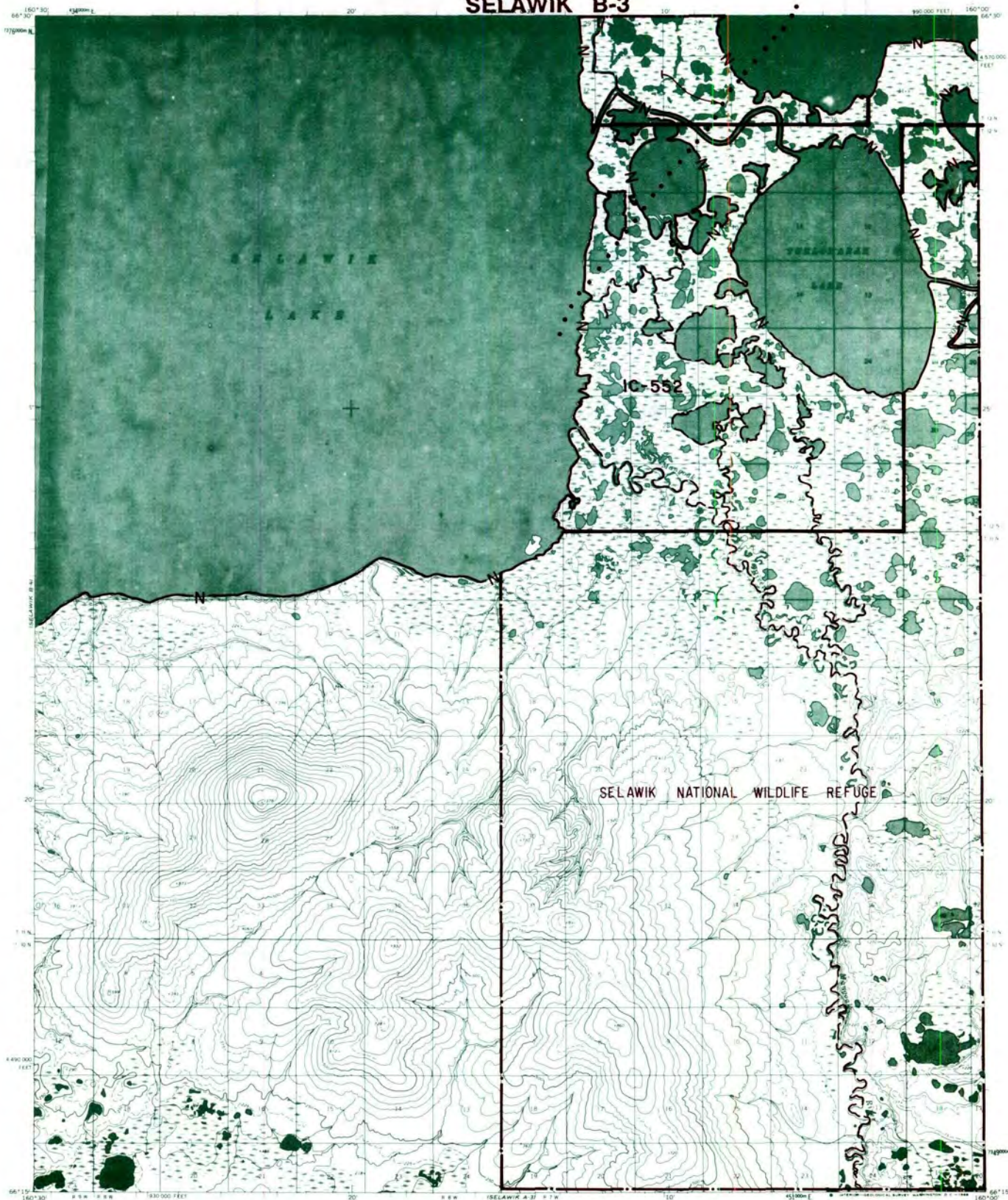
- IC OR PATENT BDY.
- N — FEDERALLY DETERMINED NAVIGABLE
- · · · NATIONAL PRESERVE LAND BDY.
- WATER EXCLUSION BDY.
- — STATE DETERMINED NAVIGABLE
- • • Δ EASEMENTS & ACCESS ROUTES



## RESERVED EASEMENTS

No easements reserved.

# SELAWIK B-3



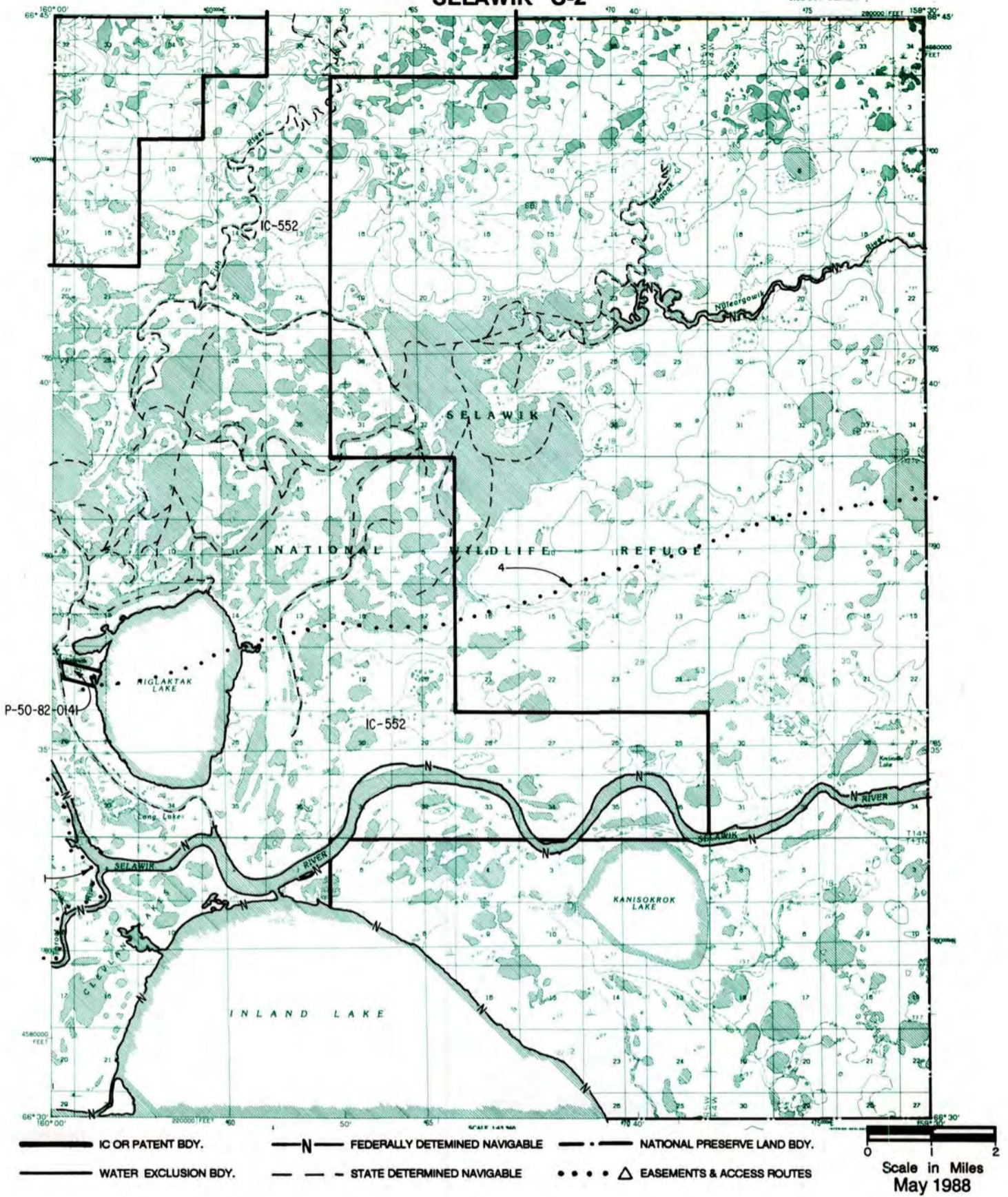
- IC OR PATENT BDY.
- N — FEDERALLY DETERMINED NAVIGABLE
- . . . NATIONAL PRESERVE LAND BDY.
- WATER EXCLUSION BDY.
- — STATE DETERMINED NAVIGABLE
- • • Δ EASEMENTS & ACCESS ROUTES



## RESERVED EASEMENTS

**EIN 1** An easement for an access trail, twenty-five (25) feet in width, beginning from Selawik in Section 20, T. 14 N., R. 6 W., K.R.M., southwesterly to Selawik Lake.

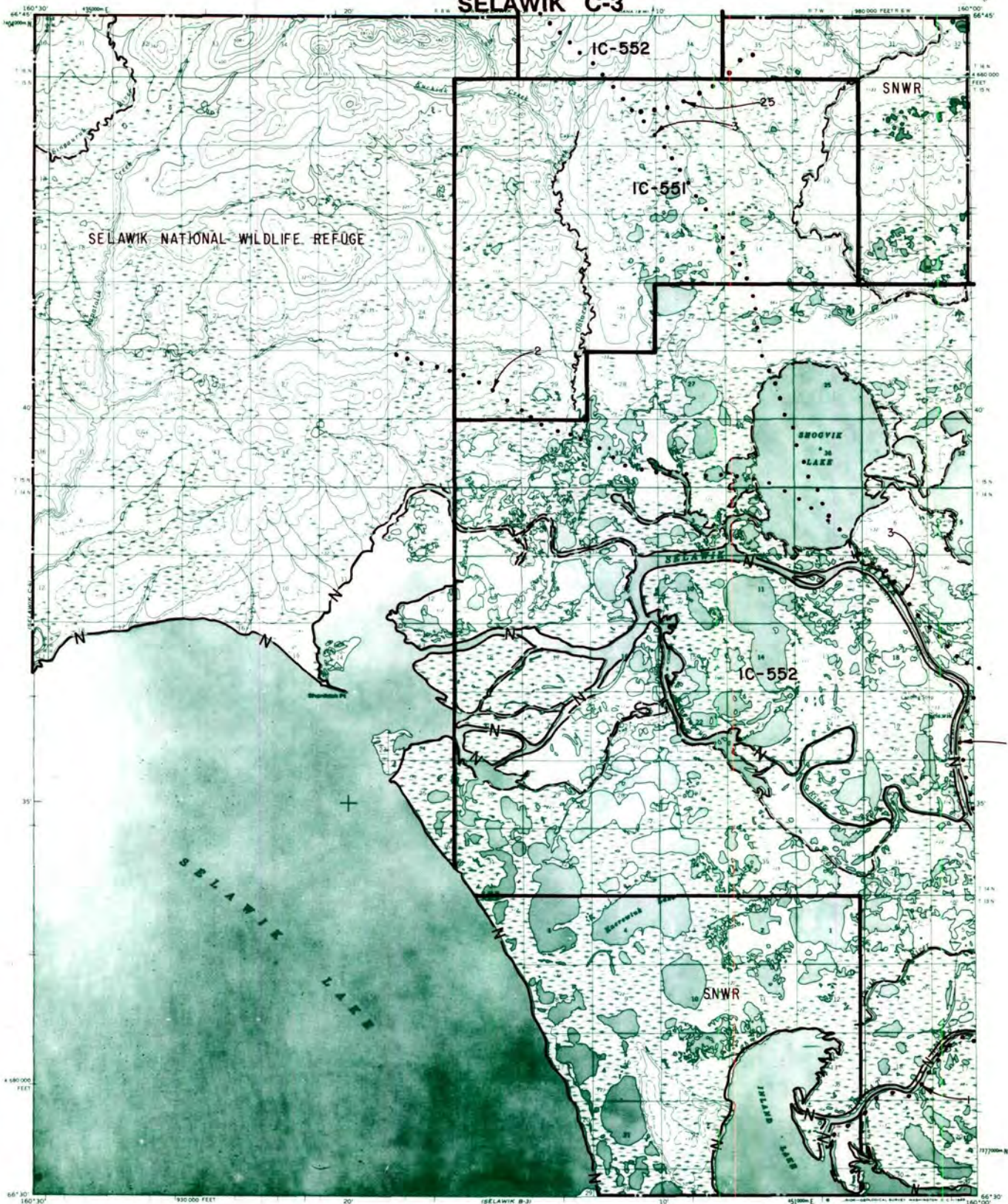
# SELAWIK C-2




## RESERVED EASEMENTS

- EIN 1** An easement for an access trail twenty-five (25) feet in width, from Selawik in Section 20, T. 14 N., R. 6 W., K.R.M., southwesterly to Selawik Lake.
- EIN 4** An easement for an access trail twenty-five (25) feet in width, from Selawik in Section 20, T. 14 N., R. 6 W., K.R.M., easterly to public land.

# SELAWIK C-3



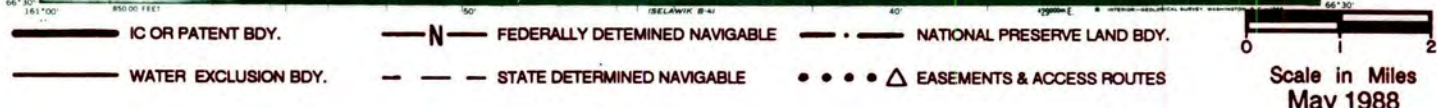
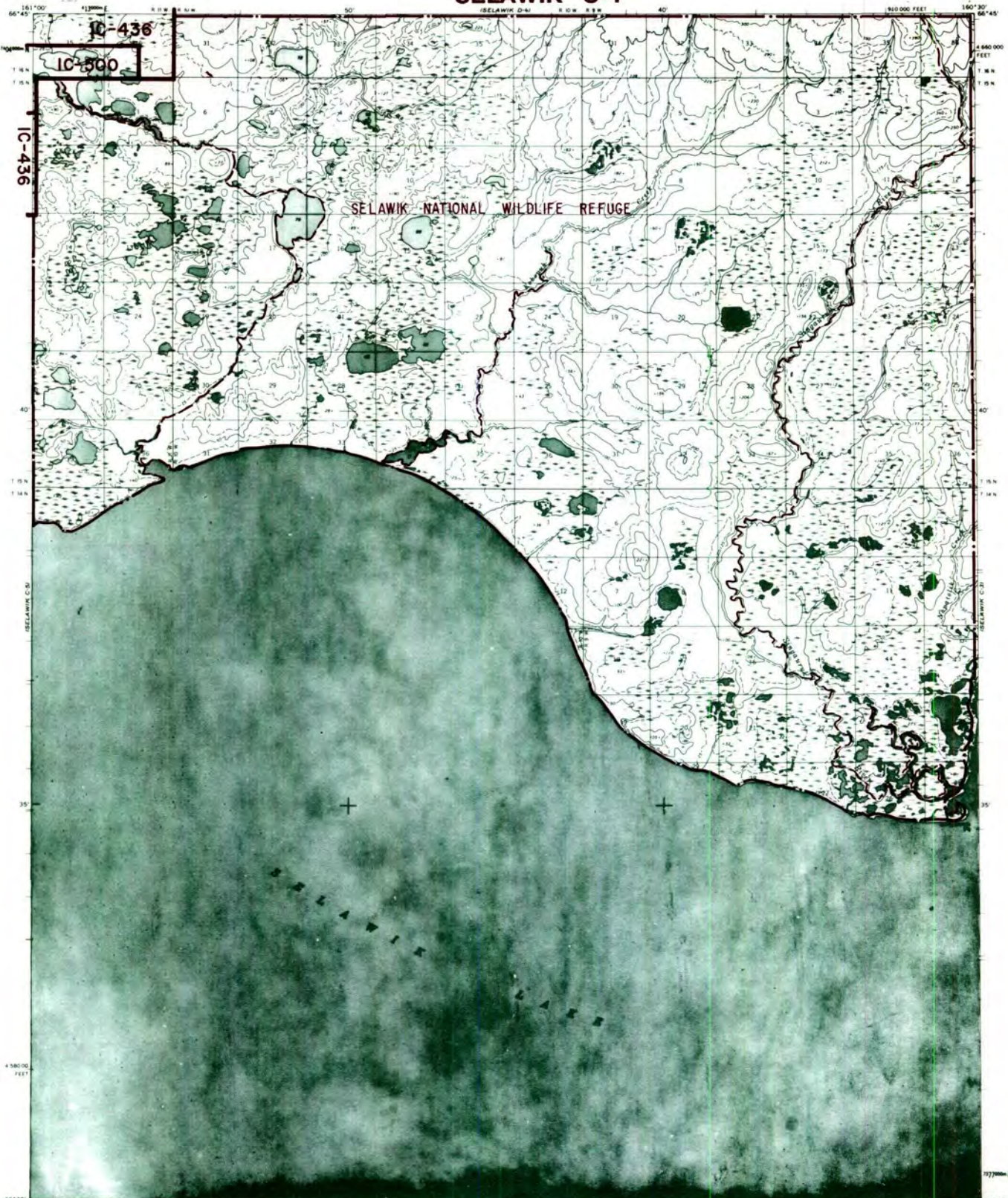
- |                      |                                |                             |  |
|----------------------|--------------------------------|-----------------------------|--|
|                      |                                |                             |  |
| IC OR PATENT BDY.    | FEDERALLY DETERMINED NAVIGABLE | NATIONAL PRESERVE LAND BDY. |  |
|                      |                                |                             |  |
| WATER EXCLUSION BDY. | STATE DETERMINED NAVIGABLE     | EASEMENTS & ACCESS ROUTES   |  |

  
 Scale in Miles  
 May 1988

## RESERVED EASEMENTS

- EIN 1**      An easement for an access trail twenty-five (25) feet in width, from Selawik in Section 20, T. 14 N., R. 6 W., K.R.M., southwesterly to Selawik Lake.
- EIN 2**      An easement for an access trail, twenty-five (25) feet in width, from the junction with trail EIN 3 on Shogvik Lake in Section 1, T. 14 N., R 7 W., K.R.M., northwesterly to public land.
- EIN 3**      An easement for an access trail, twenty-five (25) feet in width from Selawik in Section 20, T. 14 N., R. 6 W., K.R.M., northwesterly to public land.
- EIN 25**     An easement for an access trail, twenty-five (25) feet in width from trail EIN 3 in Section 4, T. 15 N., R. 7 W., K.R.M., northeasterly to public land.

# SELAWIK C-4

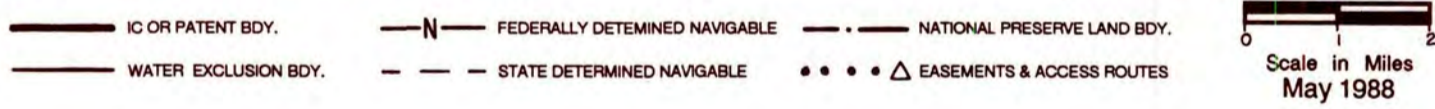
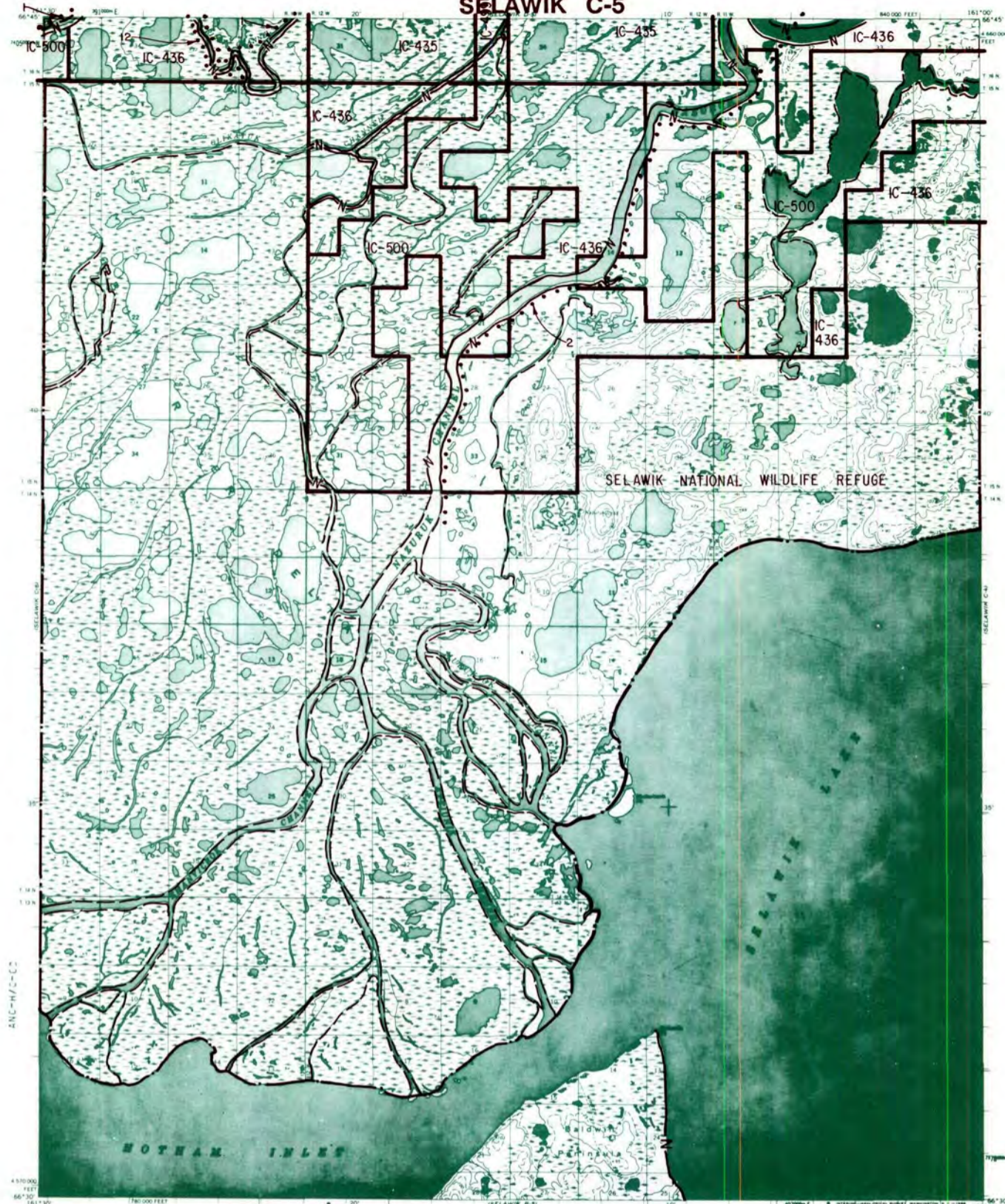


## RESERVED EASEMENTS

No easements reserved.



# SELAWIK C-5



## RESERVED EASEMENTS

- EIN 1**      An easement for an access trail, twenty-five (25) feet in width, from the west boundary of Section 31, T. 16 N., R. 13 W., K.R.M., proceeding northeasterly to the east boundary of Section 25, T. 18 N., R. 10 W., K.R.M. The season of use is limited to winter.
- EIN 2**      An easement for an access trail, twenty-five (25) feet in width, from Section 34, T. 17 N., R. 11 W., K.R.M., southwesterly to public land. The season of use is limited to winter.
- EIN 12**      An easement for a proposed access trail, twenty-five (25) feet in width, from the winter trail EIN 1 in Section 35, T. 16 N., R. 13 W., K.R.M., southerly to public land.

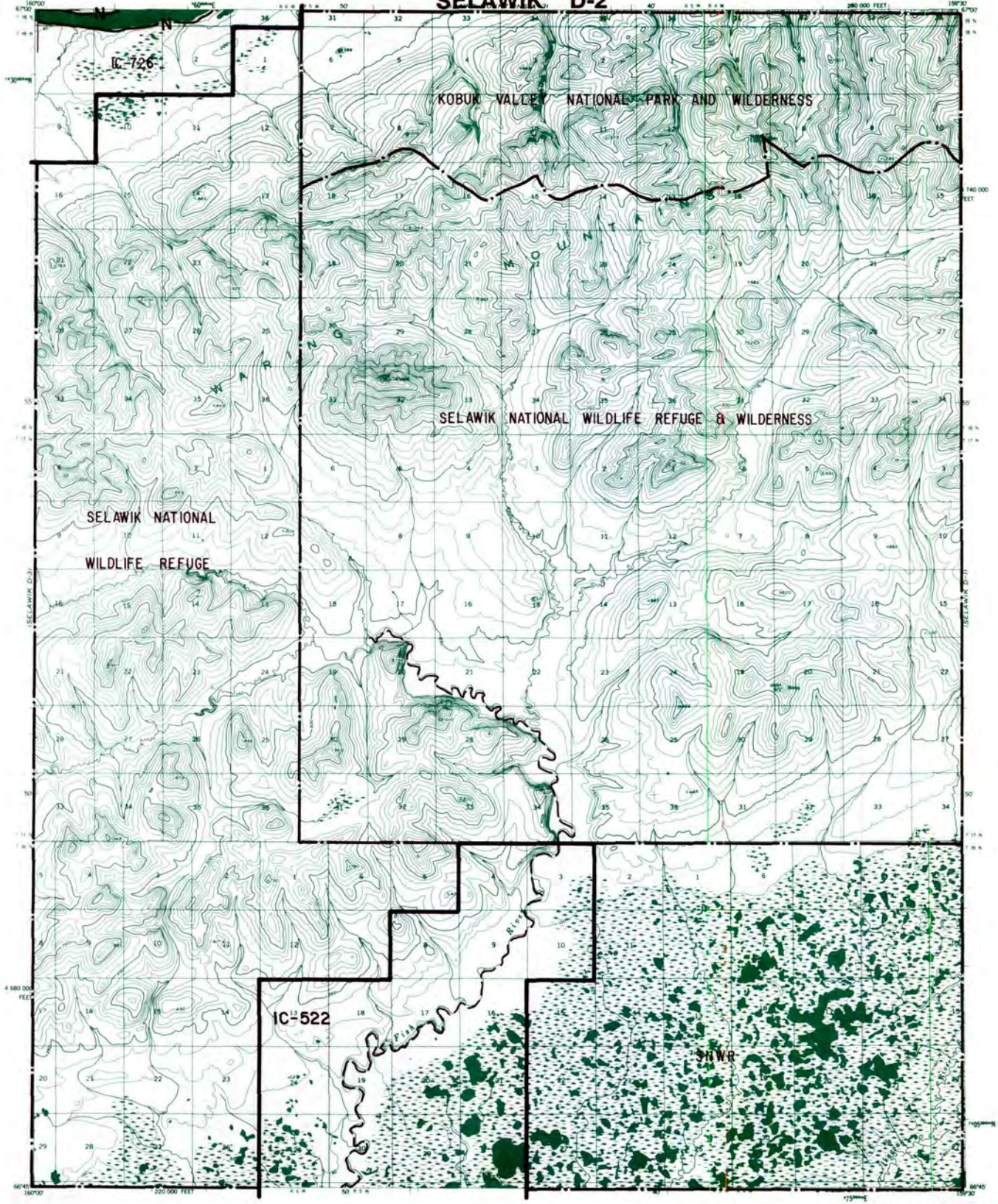
# SELAWIK C-6



## RESERVED EASEMENTS

**EIN 1** An easement for an access trail, twenty-five (25) feet in width, from the west boundary of Section 31, T. 16 N., R. 13 W., K.R.M., proceeding northeasterly to the east boundary of Section 25, T 18 N., R. 10 W., K.R.M. The season of use is limited to winter.

# SELAWIK D-2



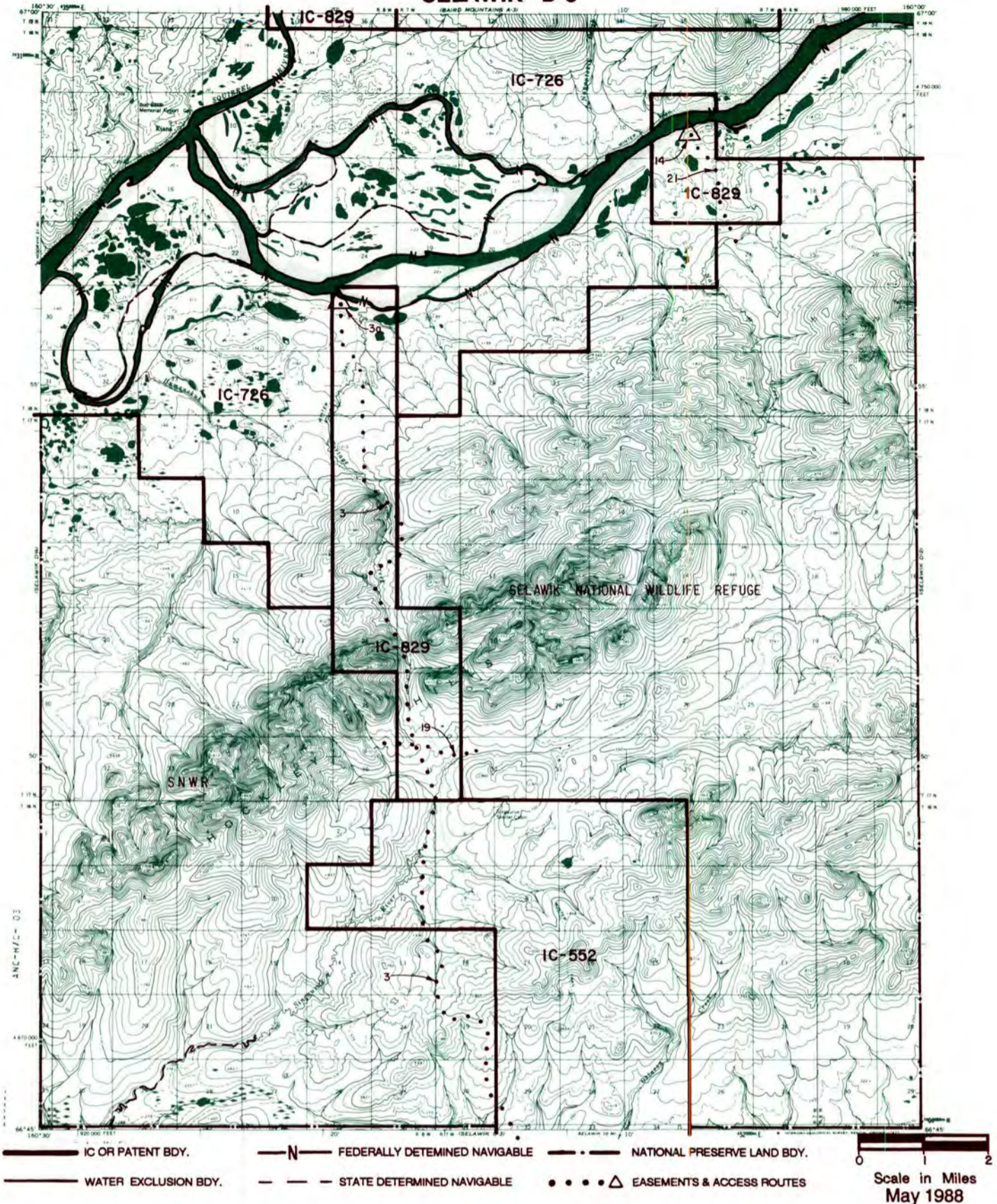
IC OR PATENT BDY.	FEDERALLY DETERMINED NAVIGABLE	NATIONAL PRESERVE LAND BDY.
WATER EXCLUSION BDY.	STATE DETERMINED NAVIGABLE	EASEMENTS & ACCESS ROUTES

Scale in Miles
   
 May 1988

## RESERVED EASEMENTS

No easements reserved.

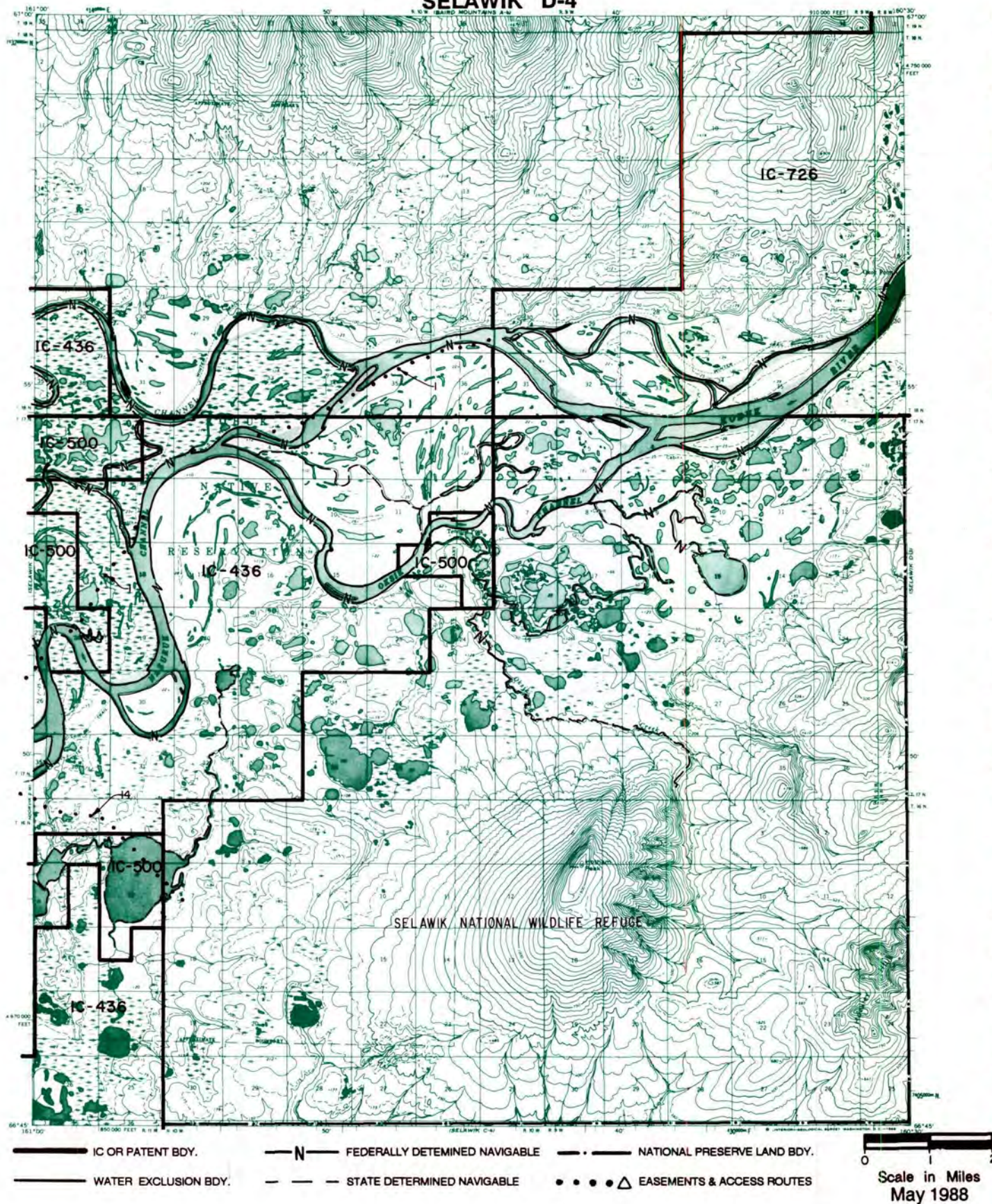
# SELAWIK D-3



## RESERVED EASEMENTS

- EIN 3** An easement twenty-five (25) feet in width for an access trail from site EIN 3a in Section 25, T. 18 N., R. 8 W., K.R.M., southerly to public land.
- EIN 3a** A one-quarter (1/4) acre site upland of the ordinary high water mark in Section 25, T. 18 N., R. 8 W., K.R.M., on the left bank (looking downstream) of the Kobuk River. The uses allowed are limited to vehicle parking (e.g., aircraft, boats, ATV's, snowmobiles, cars, trucks) and loading or unloading.
- EIN 14** A one (1) acre site easement upland of the ordinary high water mark in Section 11, T. 18 N., R. 7 W., K.R.M., on the left bank (looking downstream) of the Kobuk River.
- EIN 19** An easement twenty-five (25) feet in width for an access trail from trail EIN 3 in Section 31, T. 17 N., R. 7 W., K.R.M., proceeding easterly to public land in T. 17 N., R. 7 W., K.R.M., and westerly to public land in T. 17 N., R. 8 W., K.R.M.
- EIN 21** An easement twenty-five (25) feet in width for an access trail from the Kobuk River, Section 11, T. 18 N., R. 7 W., K.R.M., southerly to public land.

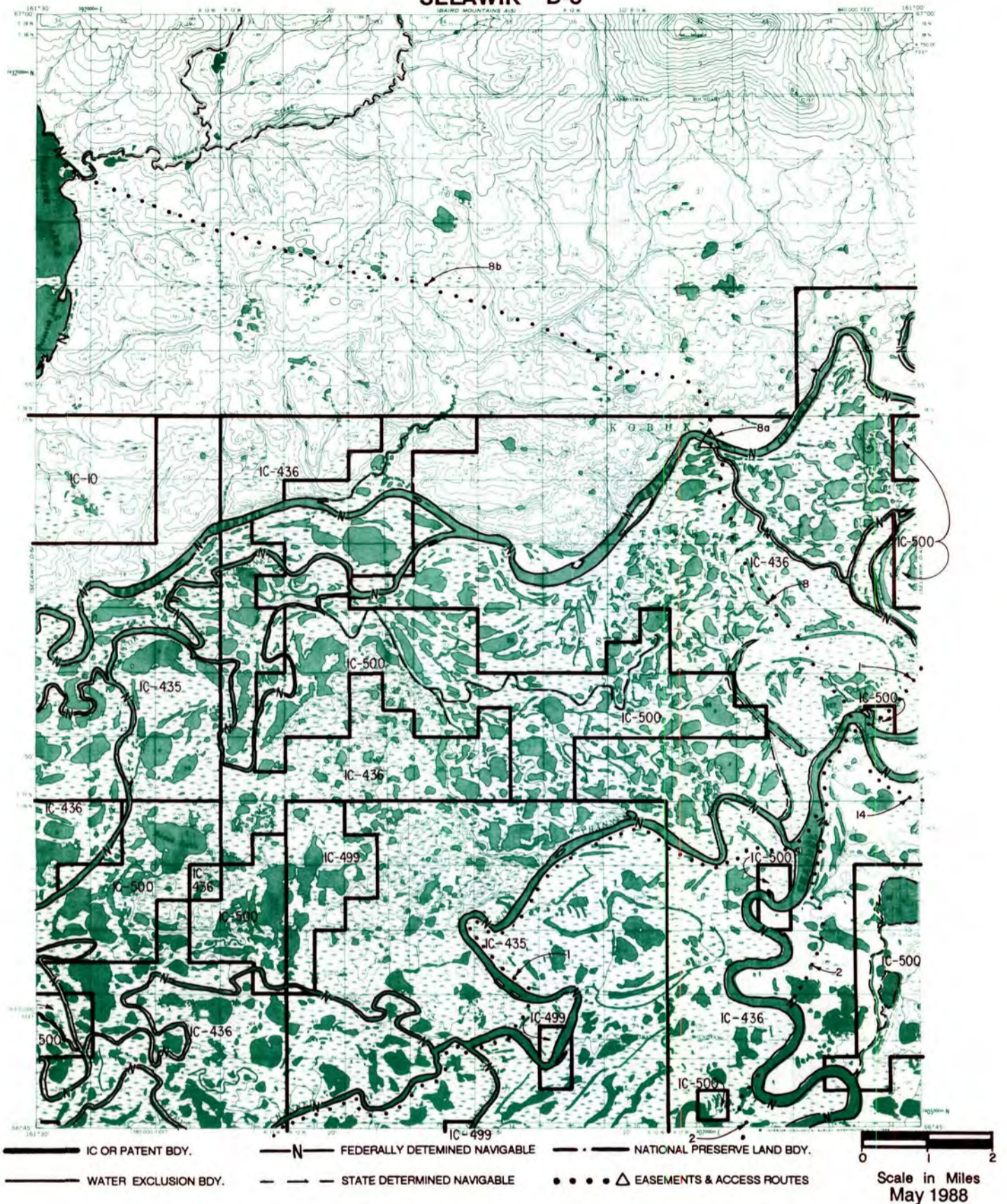
# SELAWIK D-4



## RESERVED EASEMENTS

- EIN 1** An easement for an access trail, twenty-five (25) feet in width, from the west boundary of Section 31, T. 16 N., R. 13 W., K.R.M., proceeding northeasterly to the east boundary of Section 25, T. 18 N., R. 10 W., K.R.M. The season of use is limited to winter.
- EIN 14** An easement for an access trail, twenty-five (25) feet in width, from the Robert Curtis Memorial Airstrip in Section 35, T. 17 N., R. 11 W., K.R.M., southeasterly to public land. The season of use is limited to winter.

# SELAWIK D-5



## RESERVED EASEMENTS

- EIN 1**      An easement for an access trail, twenty-five (25) feet in width, from the west boundary of Section 31, T. 16 N., R. 13 W., K.R.M., proceeding northeasterly to the east boundary of Section 25, T. 18 N., R. 10 W., K.R.M. The season of use is limited to winter.
- EIN 2**      An easement for an access trail, twenty-five (25) feet in width, from Section 34, T. 17 N., R. 11 W., K.R.M., southwestery to public land. The season of use is limited to winter.
- EIN 8**      An easement for an access trail, twenty-five (25) feet in width, from Noorvik in Section 27, T. 17 N., R. 11 W., K.R.M., proceeding northwestery to site EIN 8a located in Section 5, T. 17 N., R. 11 W., K.R.M. The season of use is limited to winter.
- EIN 8a**      A one (1) acre site easement, upland of the ordinary high water mark, in Section 5, T. 17 N., R. 11 W., K.R.M., on the right bank (looking downstream) of the Melvin Channel.
- EIN 8b**      An easement for an access trail, twenty-five (25) feet in width from site EIN 8a in Section 5, T. 17 N., R. 11 W., K.R.M., northwestery to Ekichuk Lake.
- EIN 14**      An easement for an access trail, twenty-five (25) feet in width, from the Robert Curtis Memorial Airstrip in Section 35, T. 17 N., R. 11 W., K.R.M., proceeding southeasterly to public land. The season of use is limited to winter.

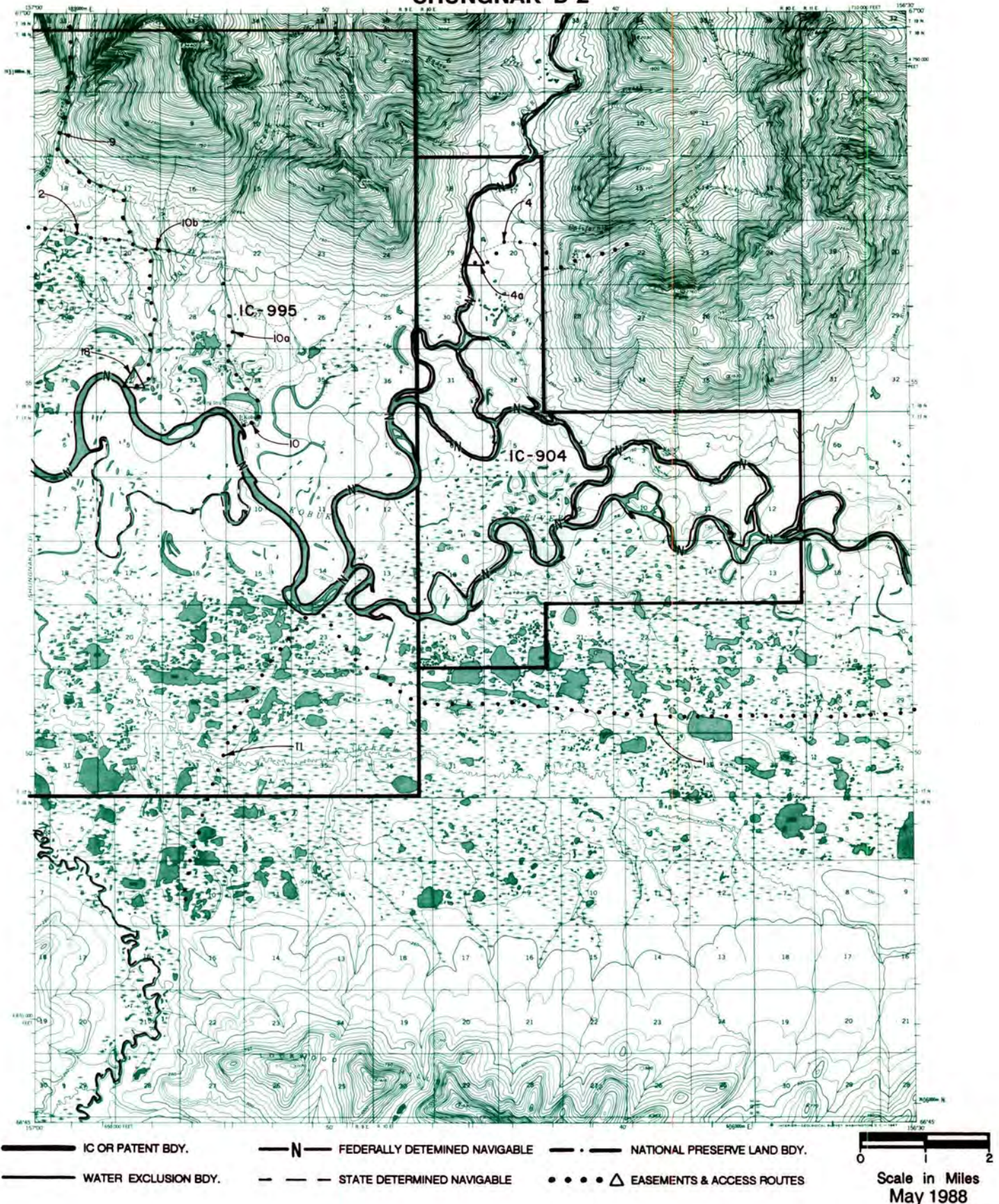
SELAWIK D-6



**RESERVED EASEMENTS**

**EIN 57** A one (1) acre site easement upland of the mean high tide line in Section 18, T. 16 N., R. 14 W., K.R.M., on the right bank (looking downstream) of Riley Channel.

# SHUNGNAK D-2



## RESERVED EASEMENTS

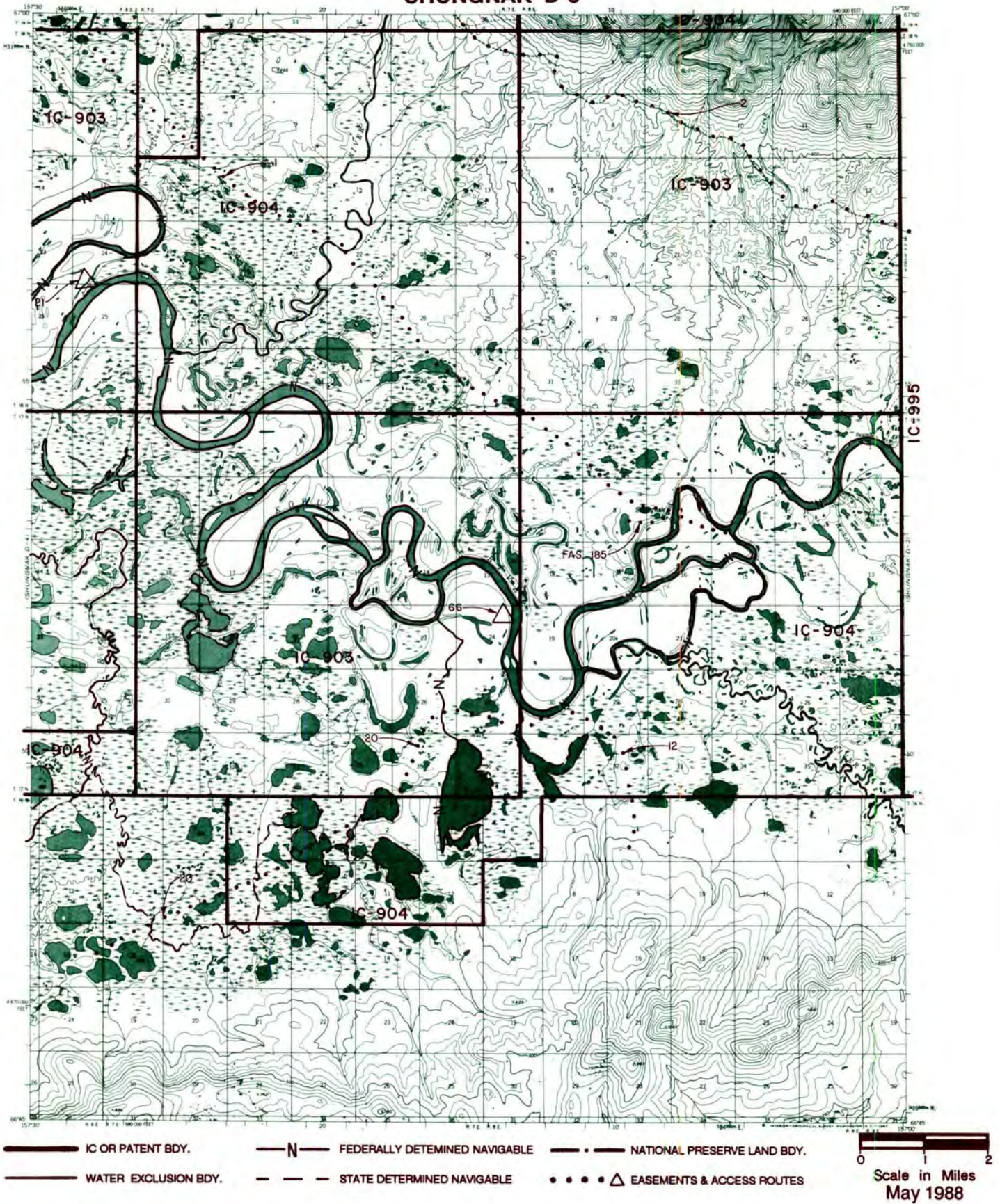
- EIN 1** An easement twenty-five (25) feet in width for an access trail from public land in Section 20, T. 19 N., R. 6 E., K.R.M., southeasterly through Shungak and Kobuk villages to public land in T. 17 N., R. 12 E., K.R.M. The trail follows the river ice from SW4, Section 10, T. 17 N., R. 8 E., K.R.M. to the N2, Section 23, T. 17 N., R. 9 E., K.R.M. The season of use is limited to winter.
- EIN 2** An easement fifty (50) feet in width for an access trail from EIN 9 in Section 20, T. 18 N., R. 9 E., K.R.M., northwesterly to public land.
- EIN 4** An easement twenty-five (25) feet in width for an access trail from site easement EIN 4a in Section 19, T. 18 N., R. 10 E., K.R.M., easterly to public land.
- EIN 4a** A one (1) acre site easement upland of the ordinary high water mark on the left bank (looking downstream) of the Kogoluktuk River in Section 19, T. 18 N., R. 10 E., K.R.M.
- EIN 9** An easement sixty (60) feet in width for a road from the Kobuk River in Section 32, T. 18 N., R. 9 E., K.R.M., northerly to public land.

Continued Next Page



- EIN 10** An easement sixty (60) feet in width for a road from Kobuk in Section 3, T. 17 N., R. 9 E., K.R.M., northeasterly to the Kobuk airport in Section 3, T. 17 N., R. 9 E., K.R.M.
- EIN 10a** An easement sixty (60) feet in width for a road from the Kobuk airport in Section 3, T. 17 N., R. 9 E., K.R.M., to the state airport lease number F-033415 (Dahl Creek Airstrip) in Section 22, T. 18 N., R. 9 E., K.R.M.
- EIN 10b** An easement sixty (60) feet in width for a road from state airport lease number F-033415 (Dahl Creek Airstrip) in Section 21, T. 18 N., R. 9 E., K.R.M., westerly to road EIN 9 in Section 20, T. 18 N., R. 9 E., K.R.M.
- EIN 11** An easement twenty-five (25) feet in width for an access trail from the Kobuk River in Section 23, T. 17 N., R. 9 E., K.R.M., southerly to public land. The season of use is limited to winter.
- EIN 18** A one (1) acre site easement, adjacent to a barge landing, upland of the ordinary high water mark in Section 32, T. 18 N., R. 9 E., K.R.M., on the right bank (looking downstream) of the Kobuk River.

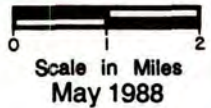
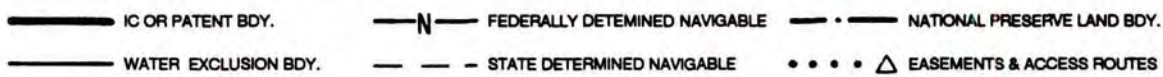
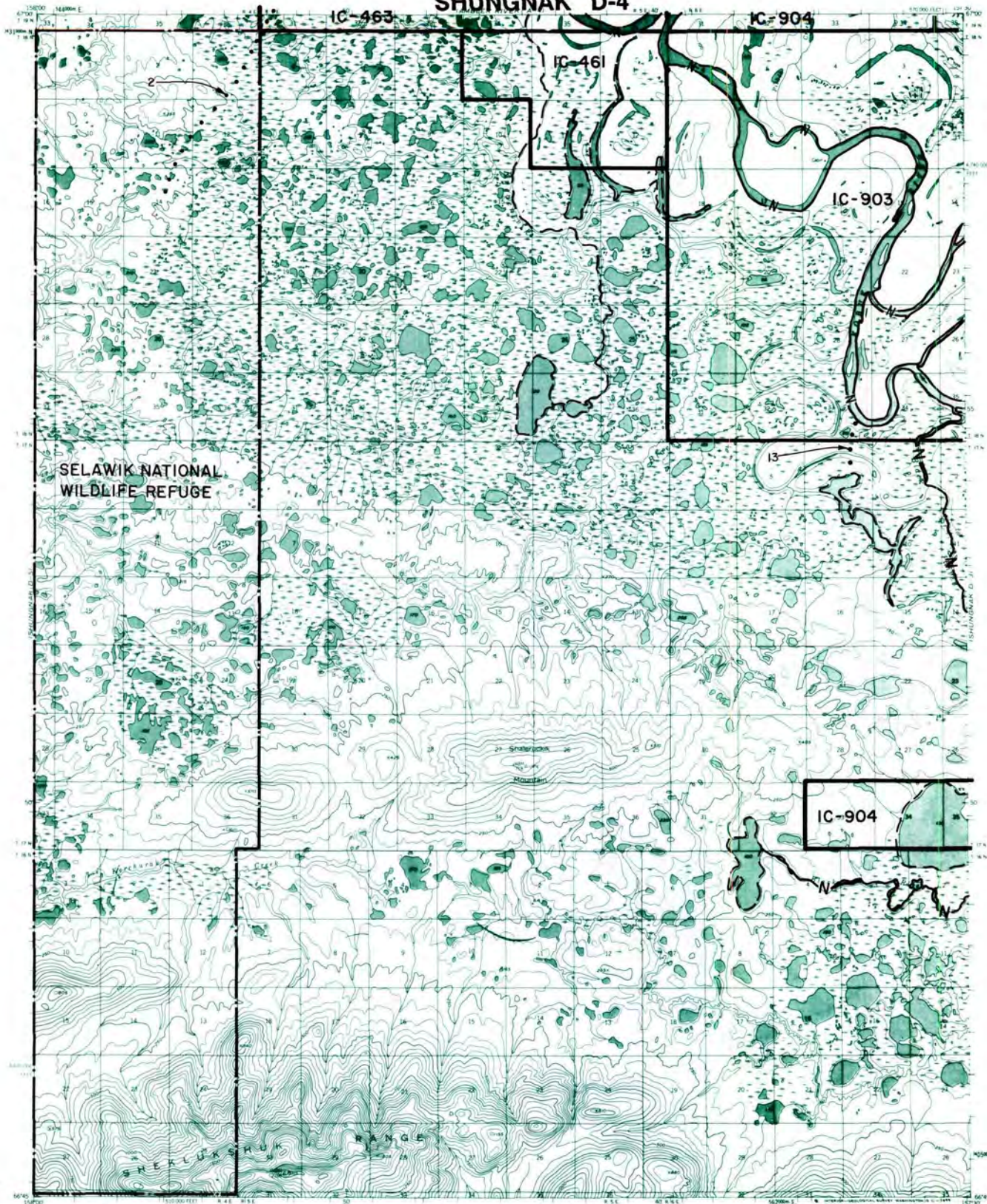
# SHUNGNAK D-3



## RESERVED EASEMENTS

- EIN 1** An easement twenty-five (25) feet in width for an access trail from public land in Section 20, T. 19 N., R. 6 E., K.R.M., southeasterly through Shungnak and Kobuk to public land in T. 17 N., R. 12 E., K.R.M. The trail follows the river ice from Section 10, T. 17 N., R. 8 E., K.R.M., to Section 23, T. 17 N., R. 9 E., K.R.M. The season of use is limited to winter.
- EIN 2** An easement fifty (50) feet in width for an access trail from EIN 9 in Section 20, T. 18 N., R. 9 E., K.R.M., northwesterly to public land.
- EIN 12** An easement fifty (50) feet in width for an access trail from the Kobuk River in Section 30, T. 17 N., R. 8 E., K.R.M., southerly to public land. The season of use is limited to winter.
- EIN 20** An easement twenty-five (25) feet in width for an access trail from Shungnak in Section 9, T. 17 N., R. 8 E., K.R.M., southwesterly to public land. The season of use is limited to winter.
- EIN 21** A one (1) acre site easement upland of the ordinary high water mark on the right bank (looking downstream) of the Kobuk River in Section 25, T. 18 N., R. 6 E., K.R.M.
- IN 66** A one (1) acre site easement upland of the ordinary high water mark on the left bank (looking downstream) of the Kobuk River in the Section 24, T. 17 N., R. 7 E., K.R.M.
- FAS 185** Easement for a road from Shungnak to the airport established by the Shungnak Village Council Resolution No. 1.

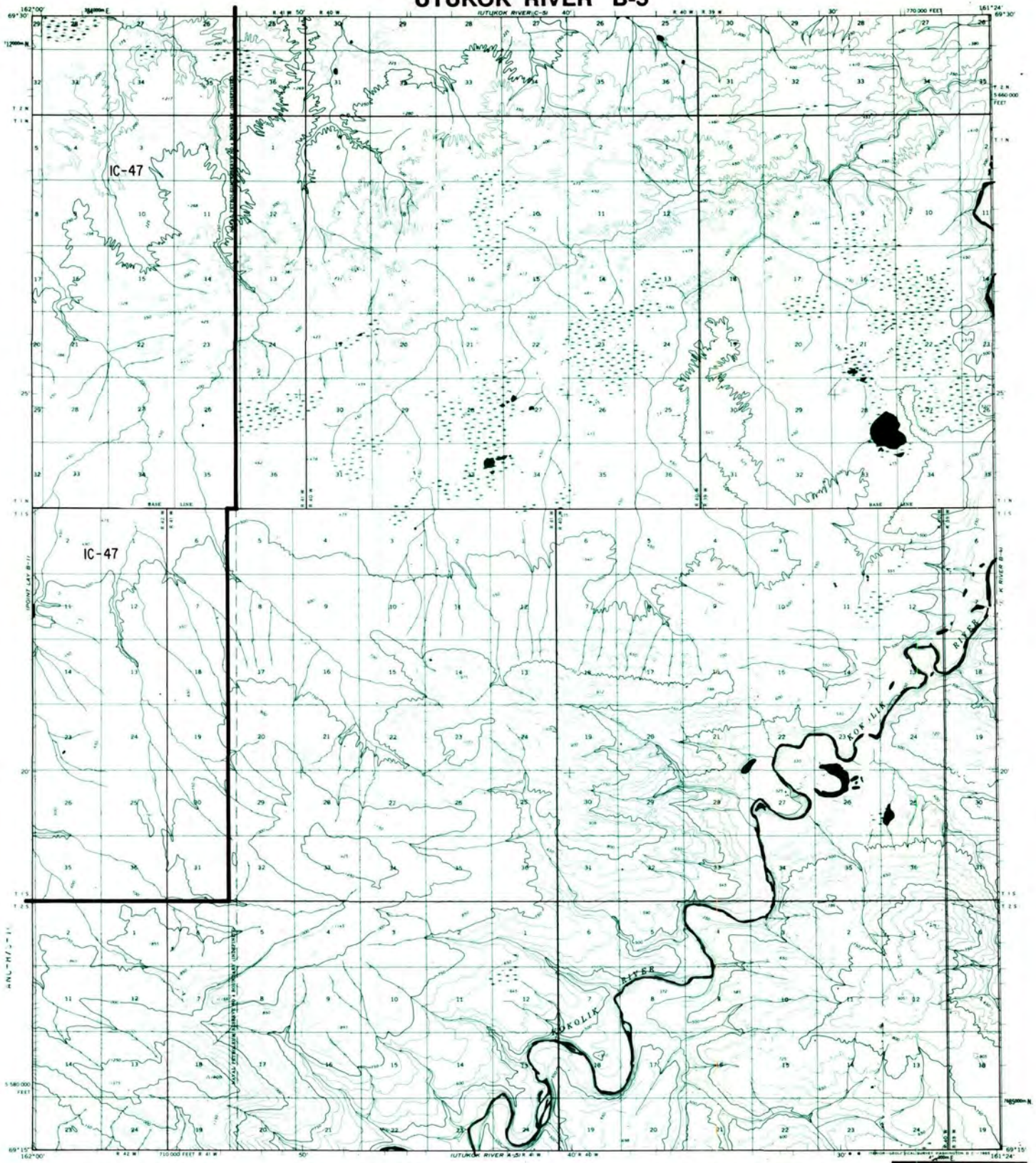
# SHUNGNAK D-4



## RESERVED EASEMENTS

- EIN 2** An easement for an access trail twenty-five (25) feet in width from Ambler in Section 31, T. 20 N., R. 5 E., K.R.M., using the Kobuk River, in part, then continuing southwesterly to public land. The season of use is limited to winter.
- EIN 13** An easement twenty-five (25) feet in width for an access trail from the Kobuk River in Section 33, T. 18 N., R. 6 E., K.R.M., southerly to public land.

# UTUKOK RIVER B-5

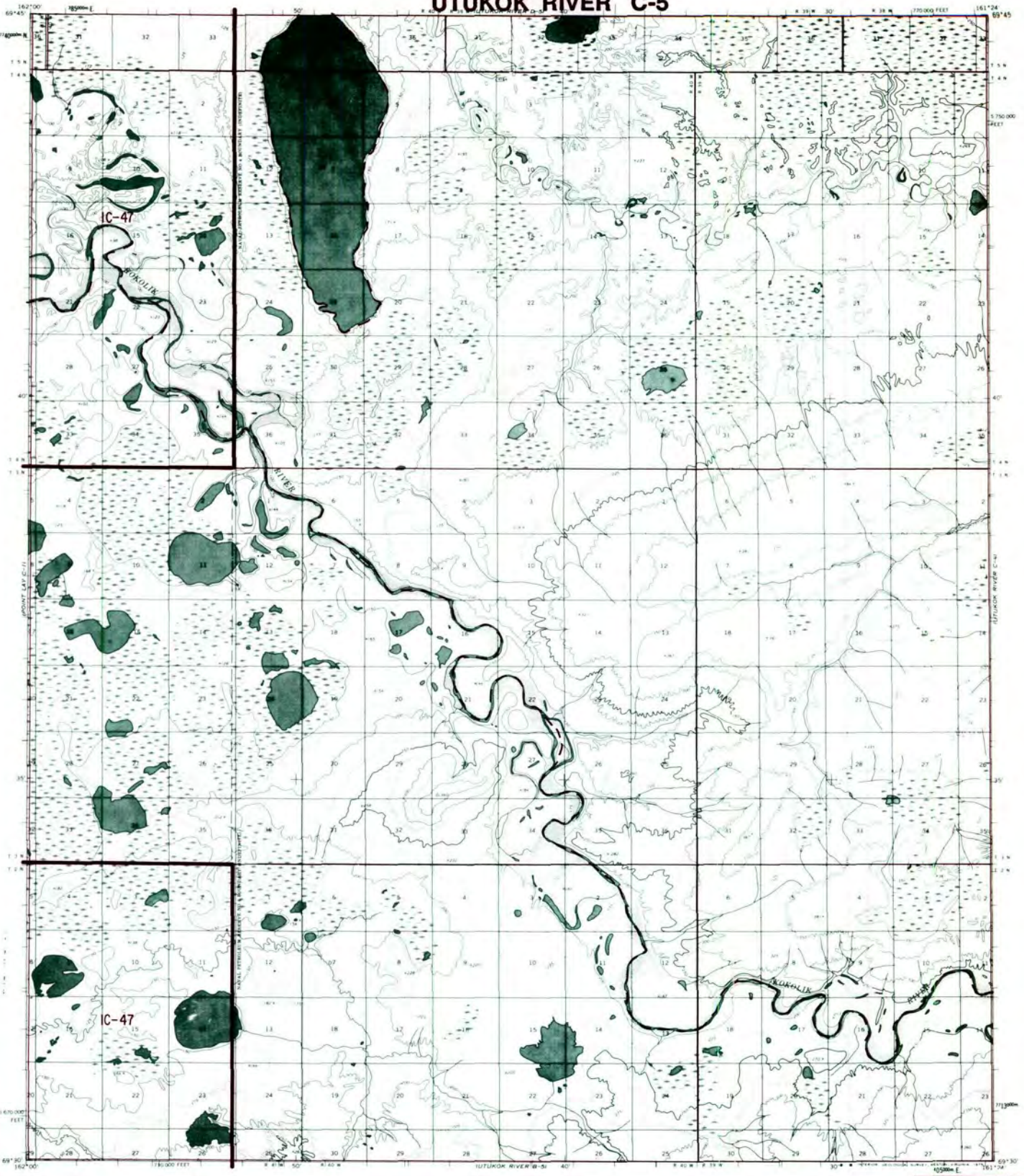


- |                      |                                |                             |
|----------------------|--------------------------------|-----------------------------|
| IC OR PATENT BDY.    | FEDERALLY DETERMINED NAVIGABLE | NATIONAL PRESERVE LAND BDY. |
| WATER EXCLUSION BDY. | STATE DETERMINED NAVIGABLE     | EASEMENTS & ACCESS ROUTES   |
- 0 1 2  
Scale in Miles  
May 1988

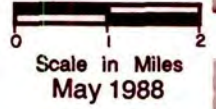
## RESERVED EASEMENTS

No easements reserved.

# UTUKOK RIVER C-5



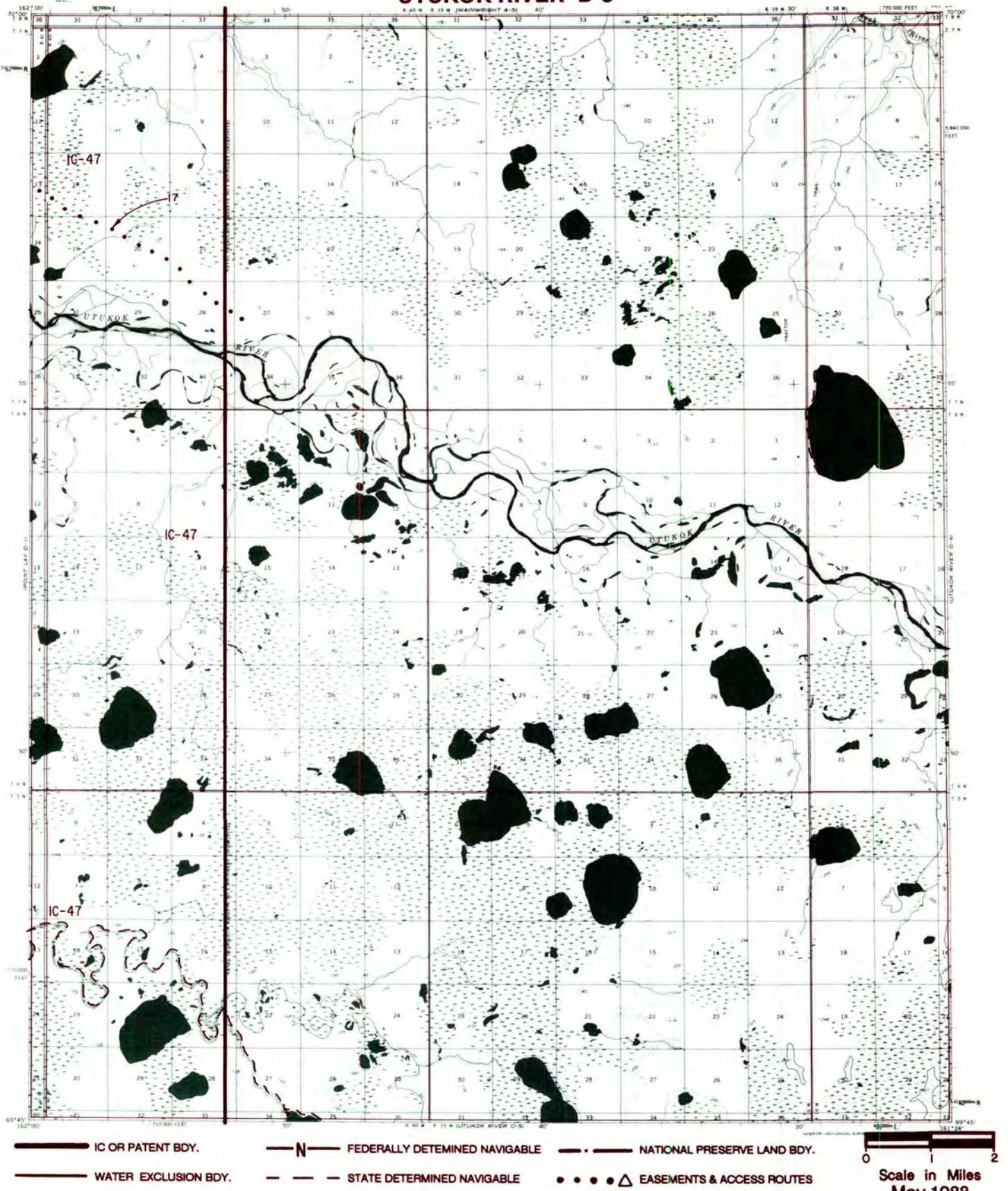
- IC OR PATENT BDY.
- N — FEDERALLY DETERMINED NAVIGABLE
- • — NATIONAL PRESERVE LAND BDY.
- WATER EXCLUSION BDY.
- — STATE DETERMINED NAVIGABLE
- • • Δ EASEMENTS & ACCESS ROUTES



## RESERVED EASEMENTS

No easements reserved.

# UTUKOK RIVER D-5

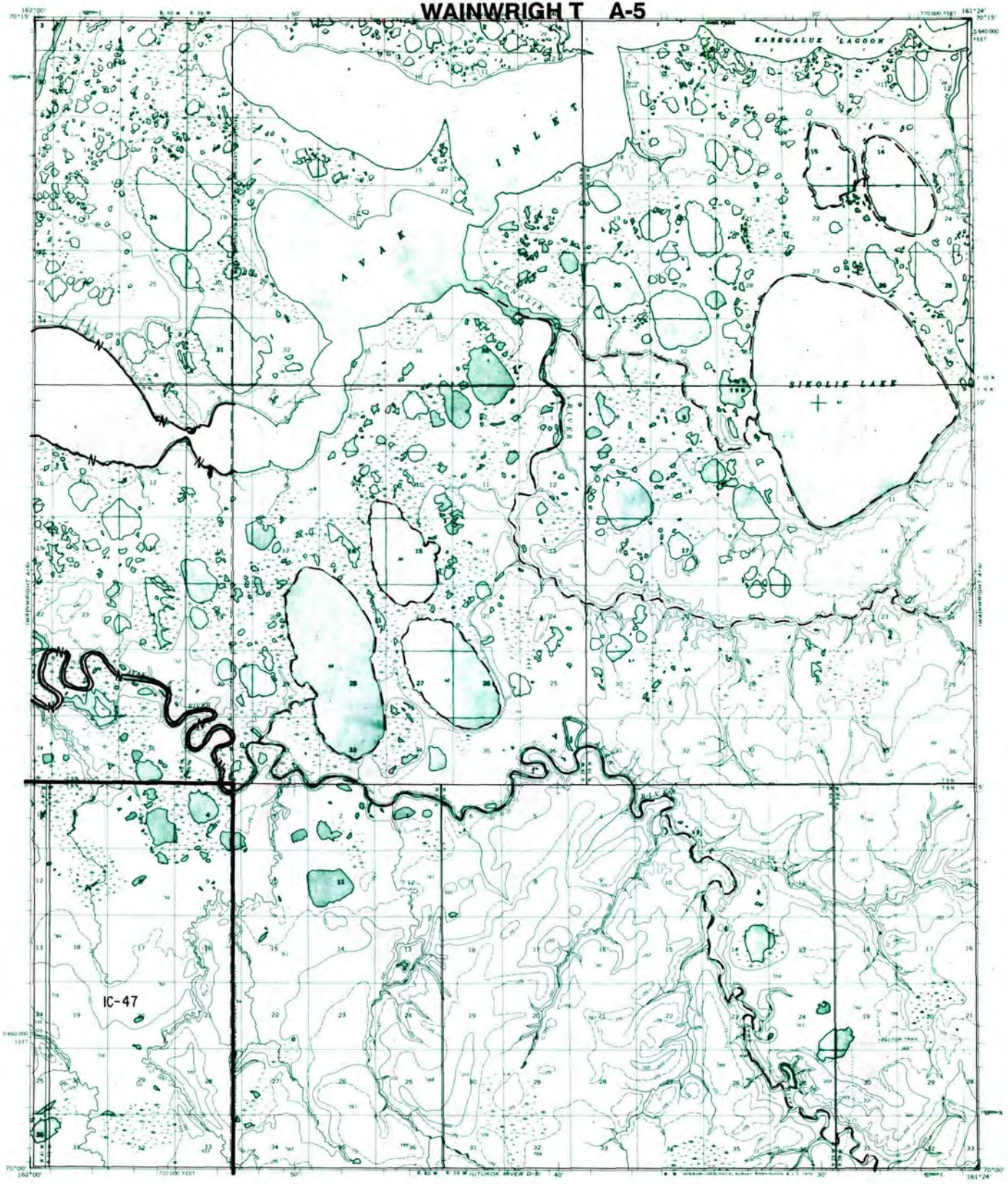


## RESERVED EASEMENTS

### EIN 17

A trail easement fifty (50) feet in width for use by the public to gain access from the Arctic coast to and from public land in the Utotok River area north of Point Lay. The trail begins in Section 6, T. 7 N., R. 42 W., U.M. and proceeds easterly to public land.

**WAINWRIGHT T A-5**



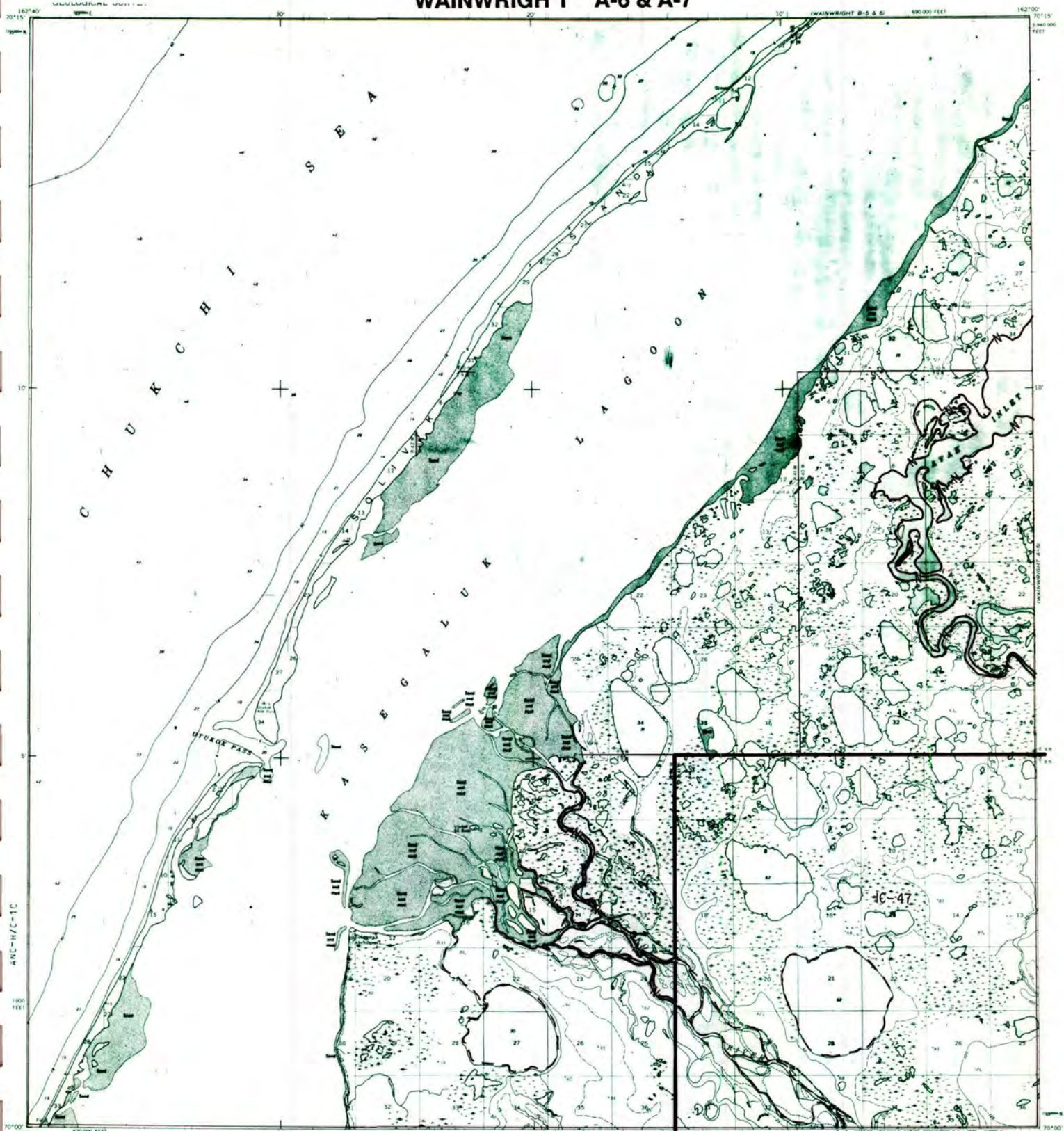
- IC OR PATENT BDY.** (thick solid line)
- FEDERALLY DETERMINED NAVIGABLE** (line with 'N' markers)
- NATIONAL PRESERVE LAND BDY.** (dash-dot line)
- WATER EXCLUSION BDY.** (thin solid line)
- STATE DETERMINED NAVIGABLE** (dashed line)
- EASEMENTS & ACCESS ROUTES** (dotted line with triangle markers)

0 1 2  
Scale in Miles  
May 1988

**RESERVED EASEMENTS**

No easements reserved.

# WAINWRIGHT T A-6 & A-7



- IC OR PATENT BDY.
- FEDERALLY DETERMINED NAVIGABLE
- NATIONAL PRESERVE LAND BDY.
- WATER EXCLUSION BDY.
- - - STATE DETERMINED NAVIGABLE
- • • • • Δ EASEMENTS & ACCESS ROUTES

Scale in Miles  
May 1988

## RESERVED EASEMENTS

No easements reserved.