

KOTZEBUE C-1



RESERVED EASEMENTS

EIN 12 An easement twenty-five (25) feet in width for an access trail from the west section line of Section 18, T. 16 N., R. 17 W., K.R.M., southeasterly to public land. The season of use is limited to winter.

KOTZEBUE C-4



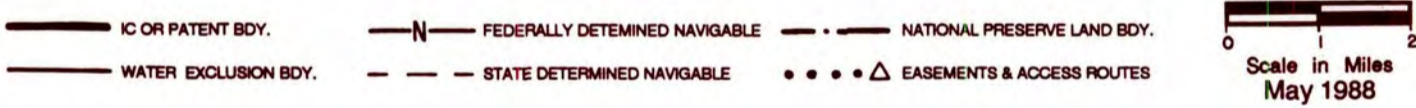
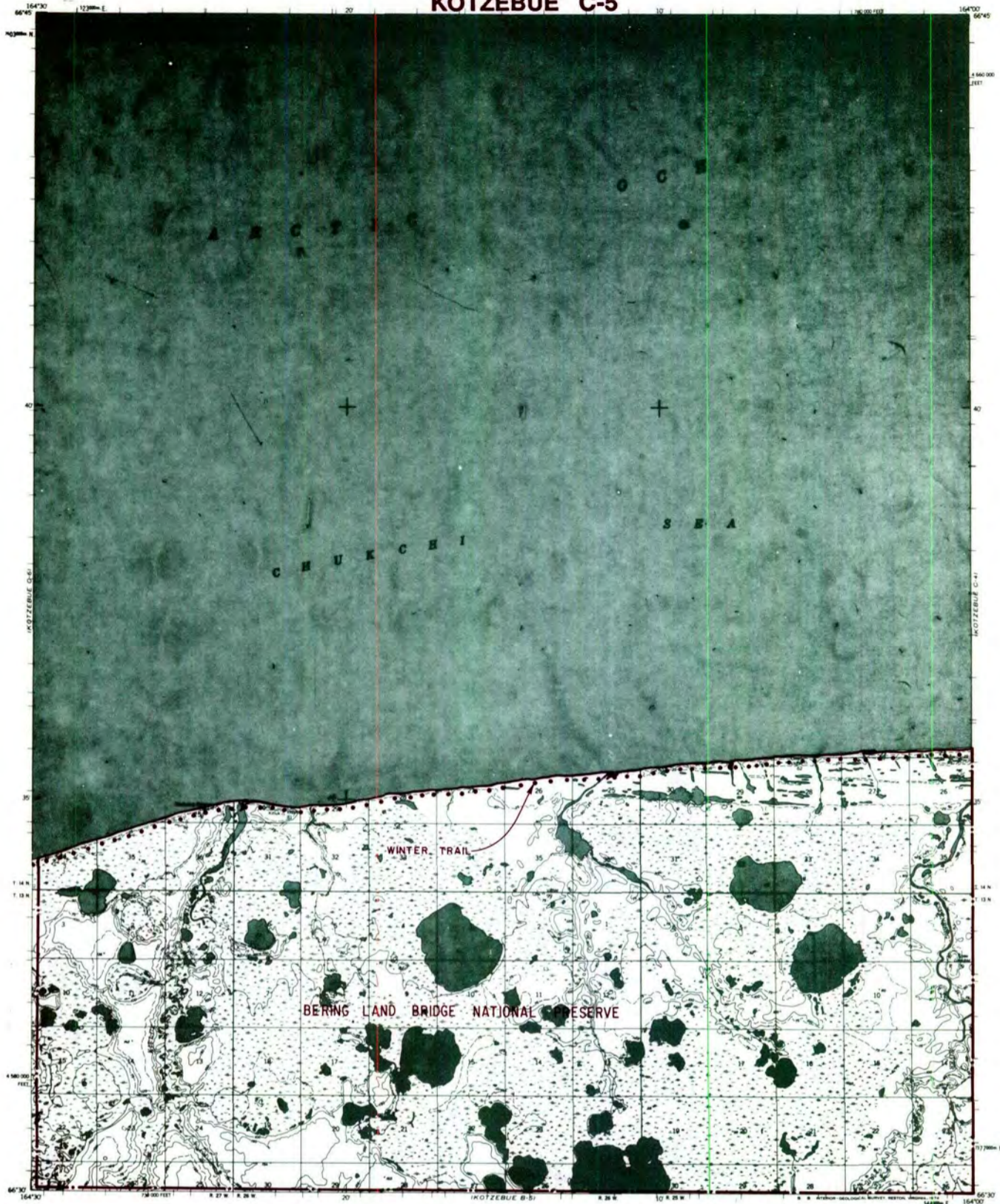
- IC OR PATENT BDY.
- WATER EXCLUSION BDY.
- N — FEDERALLY DETERMINED NAVIGABLE
- — STATE DETERMINED NAVIGABLE
- • — NATIONAL PRESERVE LAND BDY.
- • • • Δ EASEMENTS & ACCESS ROUTES



RESERVED EASEMENTS

Winter trail easement as identified in the Bering Land Bridge National Preserve Management Plan.

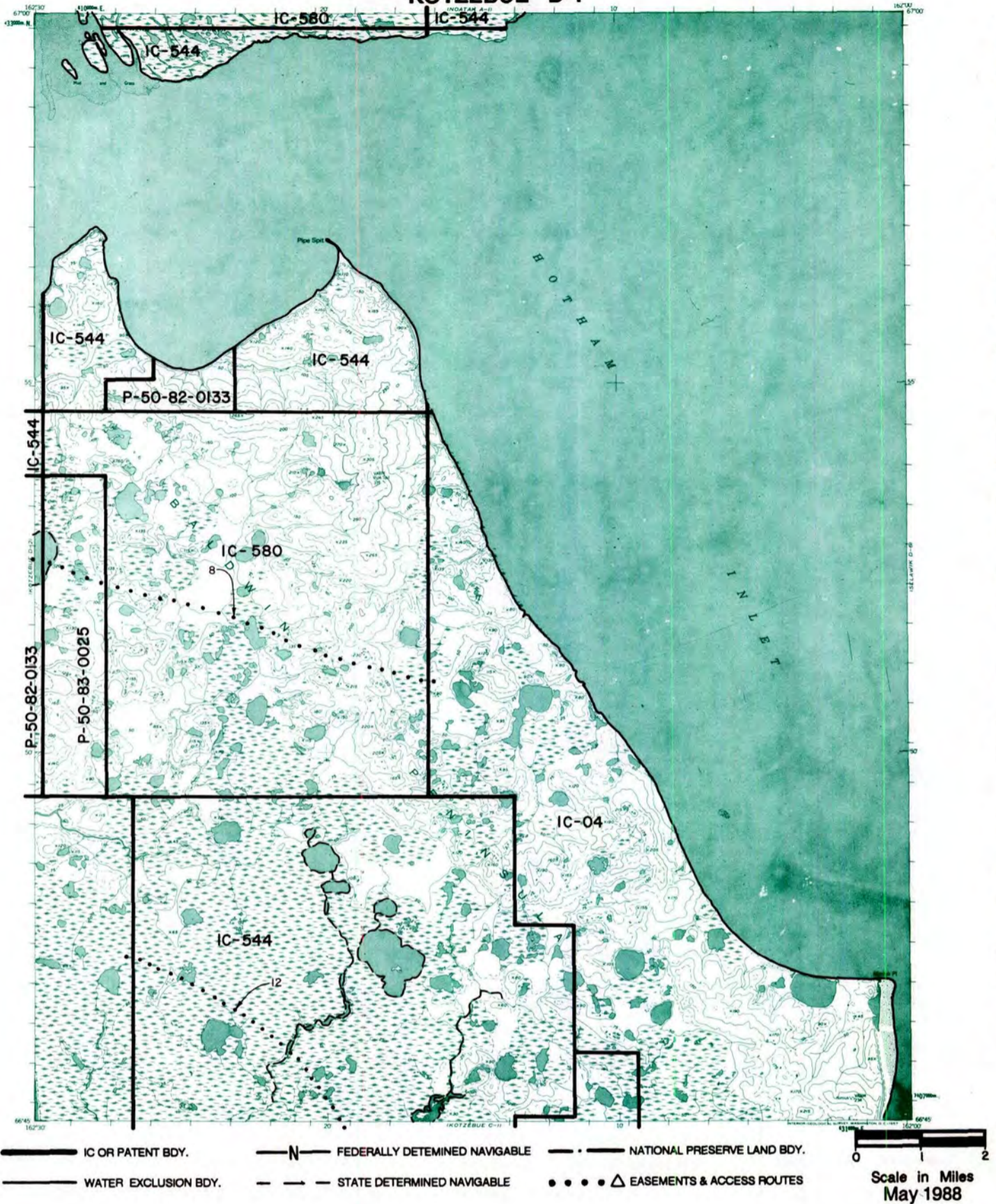
KOTZEBUE C-5



RESERVED EASEMENTS

Winter trail as identified in the Bering Land Bridge National Preserve Management Plan.

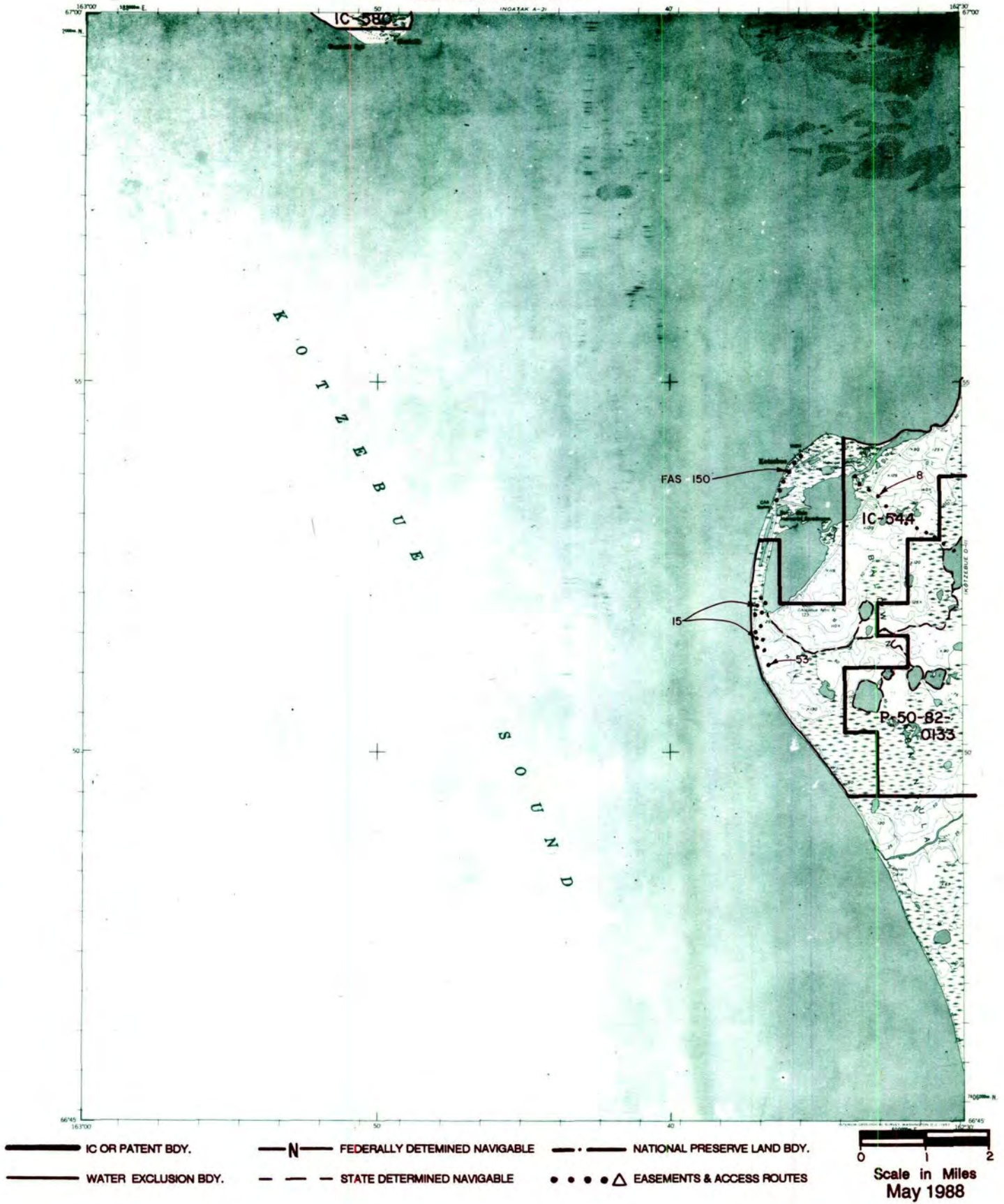
KOTZEBUE D-1



RESERVED EASEMENTS

- EIN 8** An easement twenty-five (25) feet in width for an access trail from the edge of Kotzebue Sound within Section 11, T. 17 N., R. 18 W., K.R.M., southeasterly to Noorvik. The season of use is limited to winter.
- EIN 12** An easement twenty-five (25) feet in width for an access trail from the west section line of Section 18, T. 16 N., R. 17 W., K.R.M., southeasterly to public land. The season of use is limited to winter.

KOTZEBUE D-2



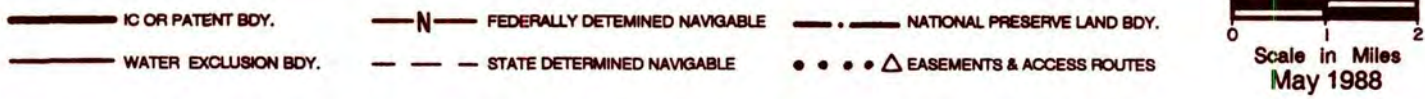
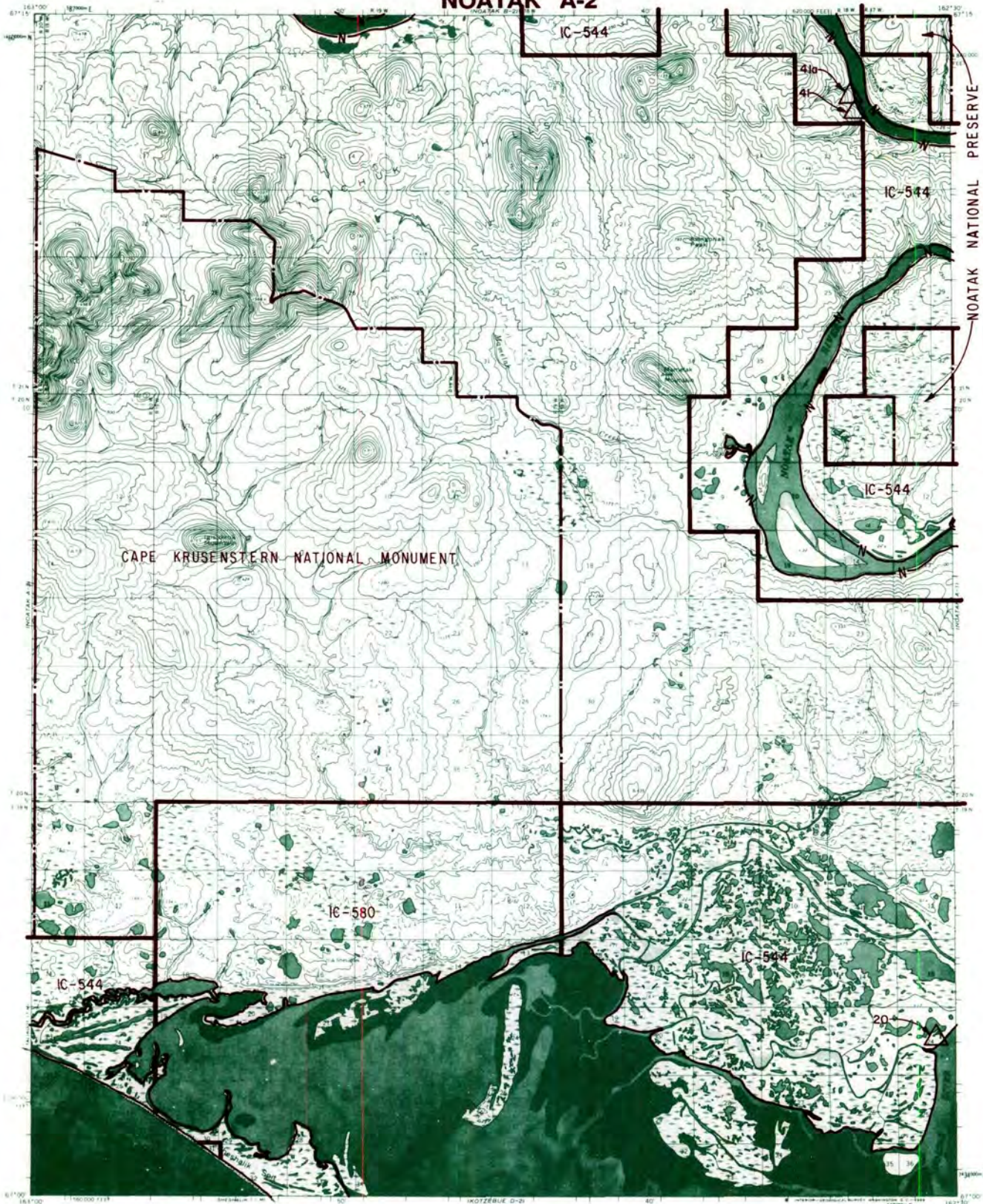
RESERVED EASEMENTS

- EIN 8** An easement twenty-five (25) feet in width for an access trail from the edge of Kotzebue Sound within Section 11, T. 17 N., R. 18 W., K.R.M., southeasterly to Noorvik. The season of use is limited to winter.
- EIN 15** An easement sixty (60) feet in width for a road from Section 16, T. 17 N., R. 18 W., K.R.M., southerly to public land in T. 16 N., R. 18 W., K.R.M.
- EIN 53** An easement sixty (60) feet in width for a road from Section 16, T. 17 N., R. 18 W., K.R.M., southerly to the north boundary of Section 28, T. 17 N., R. 18 W., K.R.M.
- FAS 150** Platted easement for a road from Kotzebue southwesterly to the Ralph Wein Memorial Airport, U.S.S. 2863.

EIN 50a A one-quarter (1/4) acre site easement upland of the ordinary high water mark in Section 20, T. 21 N., R. 17 W., K.R.M., on the left bank (looking downstream) of the Noatak River. No overnight camping is permitted.

EIN 58 A one-quarter (1/4) acre site easement upland of the ordinary high water mark in Section 14, T. 20 N., R. 17 W., K.R.M., on the left bank (looking downstream) of the Noatak River near the mouth of Hugo Creek. No overnight camping is permitted.

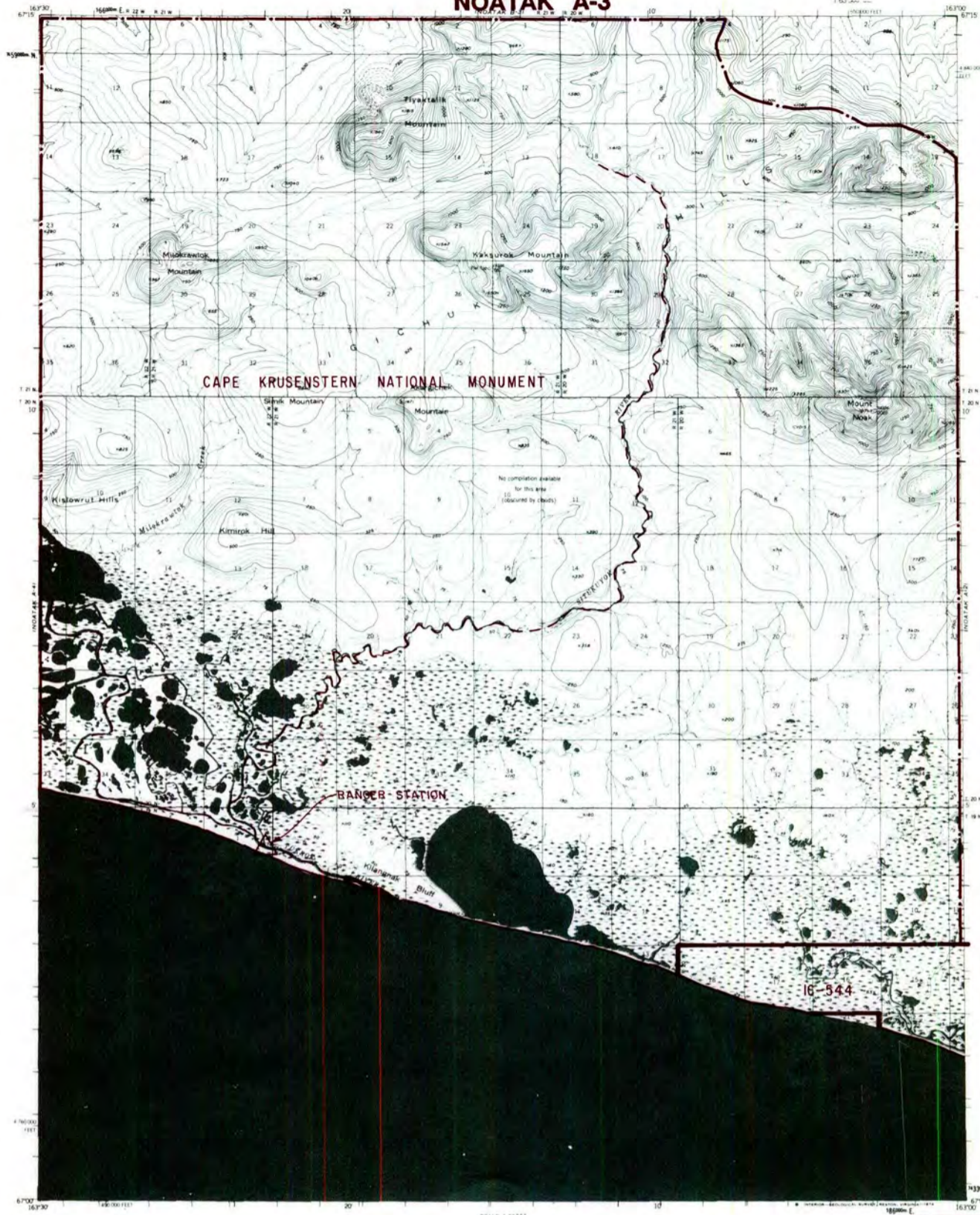
NOATAK A-2



RESERVED EASEMENTS

- EIN 20** A one (1) acre site easement upland of the ordinary high water mark in Section 24, T. 19 N., R. 18 W., K.R.M., on the right bank (looking downstream) of the Noatak River.
- EIN 41** An easement twenty-five (25) feet in width for an access trail from the right bank (looking downstream) of the Noatak River in Section 7, T. 21 N., R. 17 W., K.R.M., southwesterly to public land.
- EIN 41a** A one-quarter (1/4) acre site easement upland of the ordinary high water mark in Section 7, T. 21 N., R. 17 W., K.R.M., on the right bank (looking downstream) of the Noatak River. No overnight camping is permitted.

NOATAK A-3



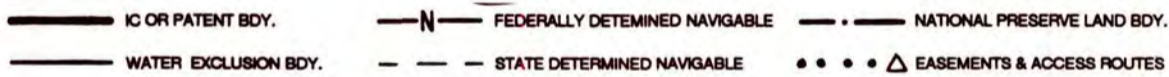
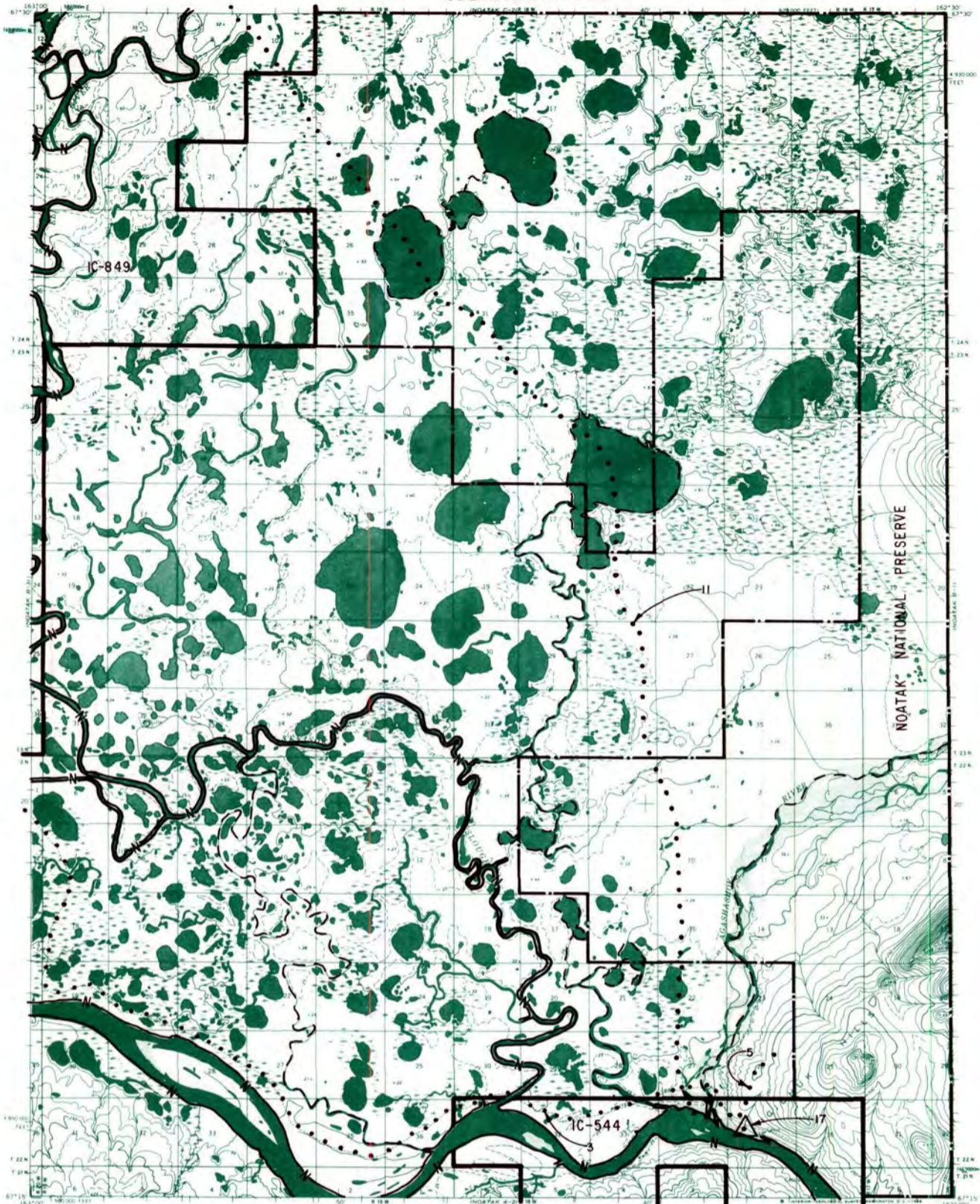
- IC OR PATENT BDY.
- N FEDERALLY DETERMINED NAVIGABLE
- NATIONAL PRESERVE LAND BDY.
- WATER EXCLUSION BDY.
- STATE DETERMINED NAVIGABLE
- EASEMENTS & ACCESS ROUTES



RESERVED EASEMENTS

National Park Service Ranger Station.

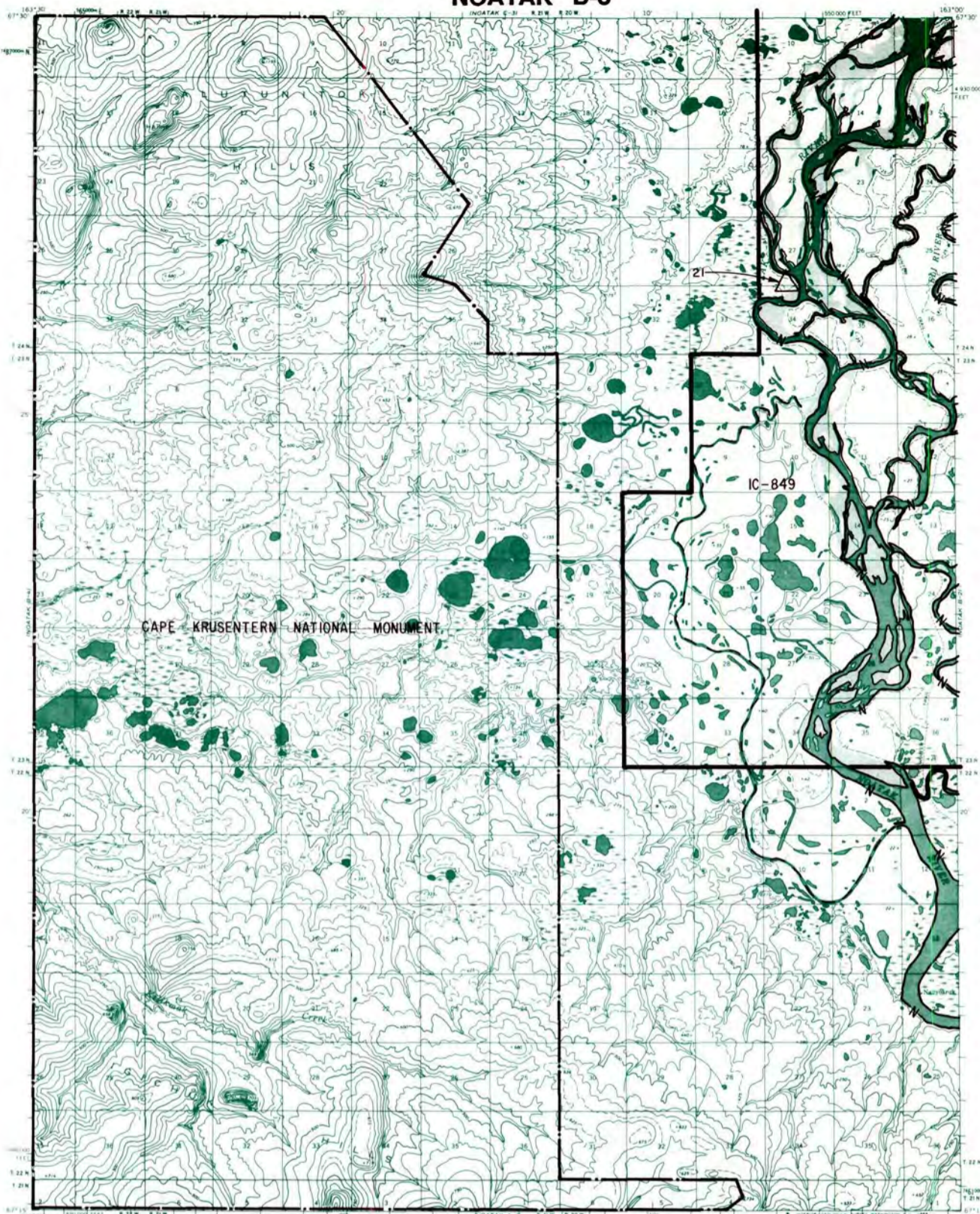
NOATAK B-2



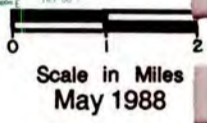
RESERVED EASEMENTS

- EIN 11** An easement twenty-five (25) feet in width for an access trail beginning at trail EIN 13 on the right bank (looking downstream) of the Noatak River in Section 9, T. 25 N., R. 19 W., K.R.M., southeasterly to public land. The season of use is limited to winter.
- EIN 3** An easement twenty-five (25) feet in width for a winter access trail from Kotzebue, northerly across Hotham Inlet, generally following the Noatak River, to Noatak. The season of use is limited to winter.
- EIN 5** An easement twenty-five (25) feet in width for an access trail near the mouth of the Agashashok River, in Section 35, T. 22 N., R. 18 W., K.R.M., northeasterly to public land. The season of use is limited to summer.
- EIN 17** A one (1) acre site easement upland of the ordinary high water mark in Section 35, T. 22 N., R. 18 W., K.R.M., on the left bank (looking downstream) of the Noatak River.

NOATAK B-3



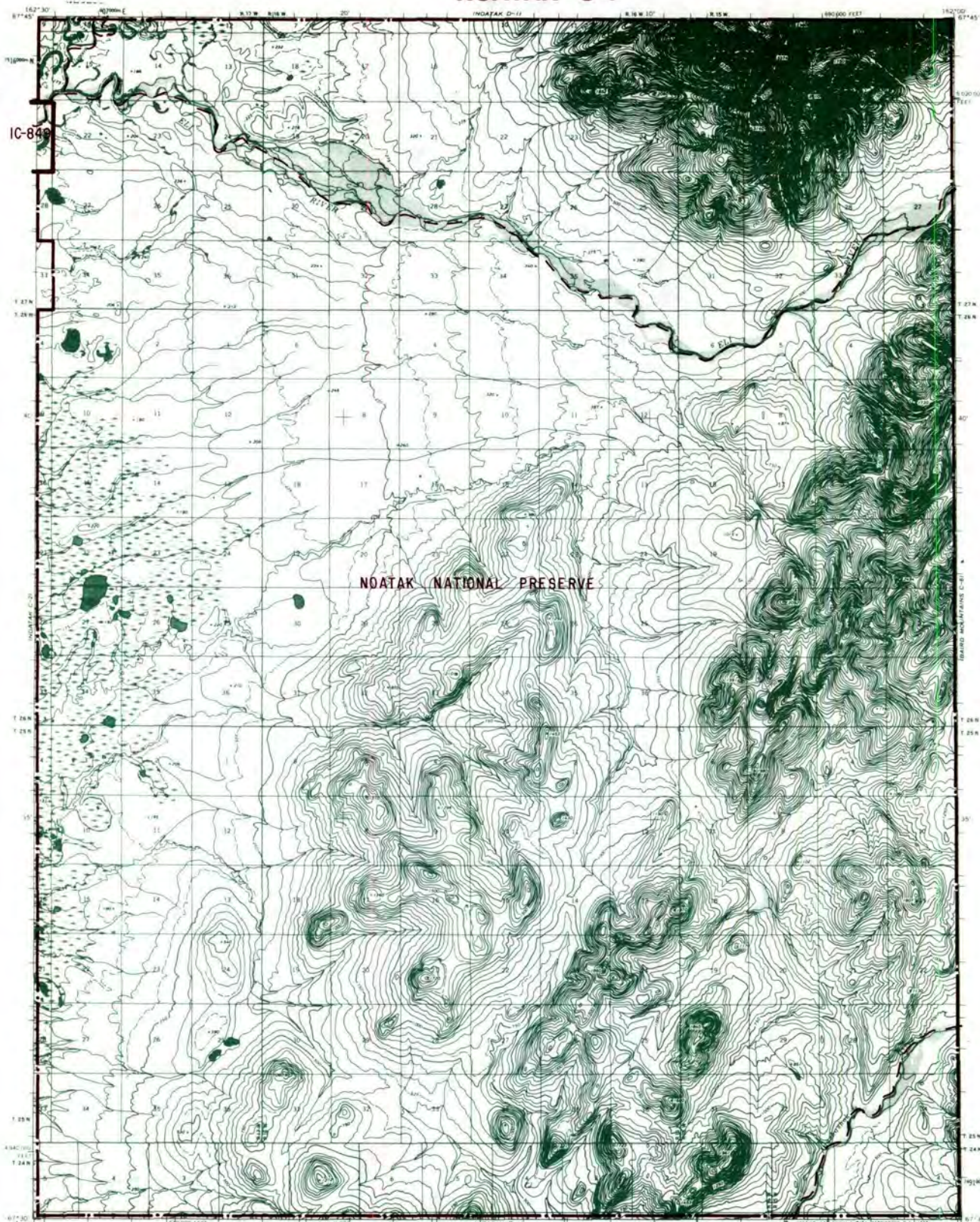
- IC OR PATENT BDY. N FEDERALLY DETERMINED NAVIGABLE NATIONAL PRESERVE LAND BDY.
- WATER EXCLUSION BDY. STATE DETERMINED NAVIGABLE EASEMENTS & ACCESS ROUTES



RESERVED EASEMENTS

EIN 21 A one (1) acre site easement upland of the ordinary high water mark on the right bank (looking downstream) of the Noatak River in Sections 27 and 34, T. 24 N., R. 20 W., K.R.M.

NOATAK C-1



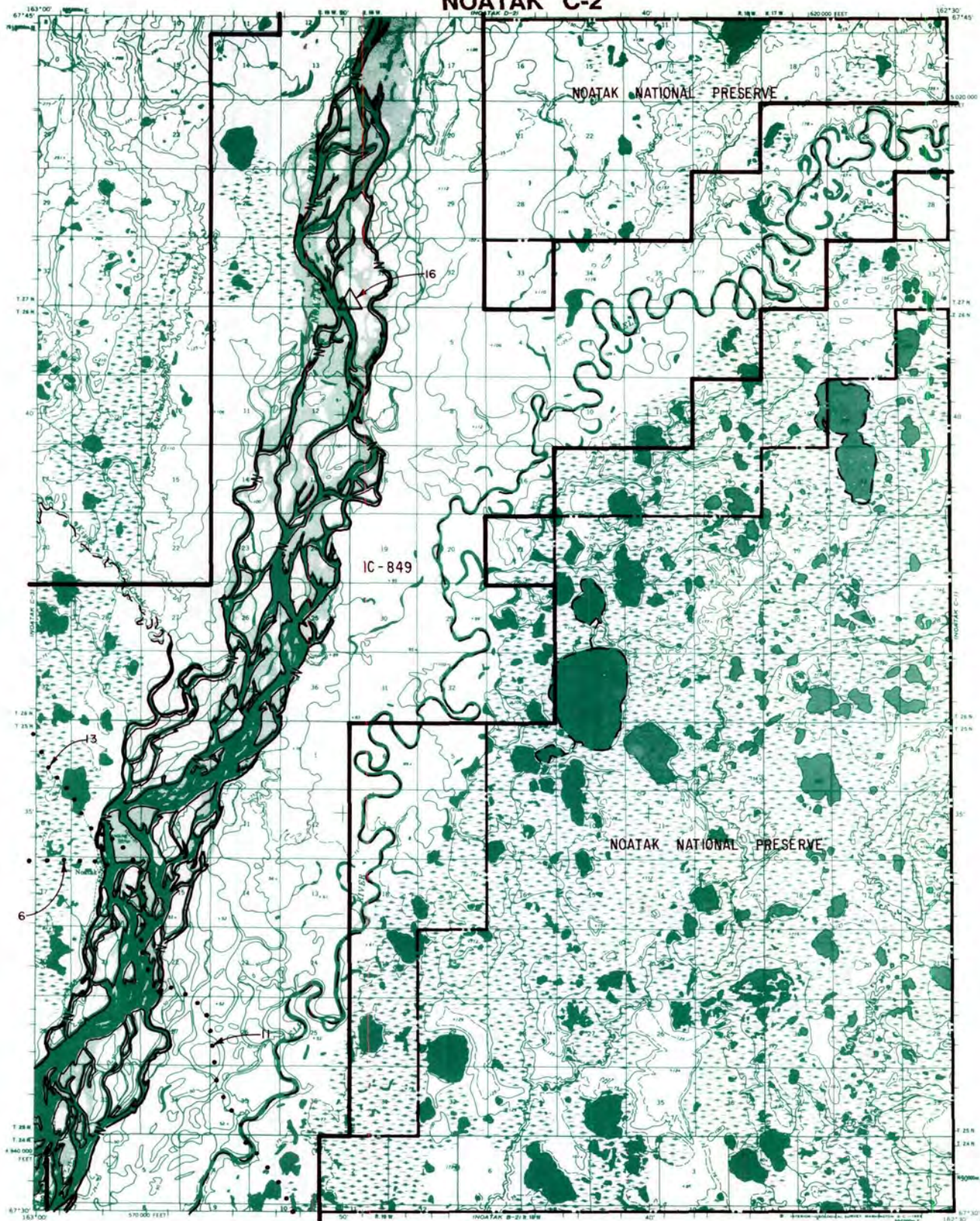
- IC OR PATENT BDY.
- WATER EXCLUSION BDY.
- N FEDERALLY DETERMINED NAVIGABLE
- STATE DETERMINED NAVIGABLE
- NATIONAL PRESERVE LAND BDY.
- EASEMENTS & ACCESS ROUTES



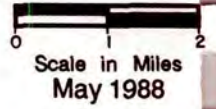
RESERVED EASEMENTS

No easements reserved.

NOATAK C-2



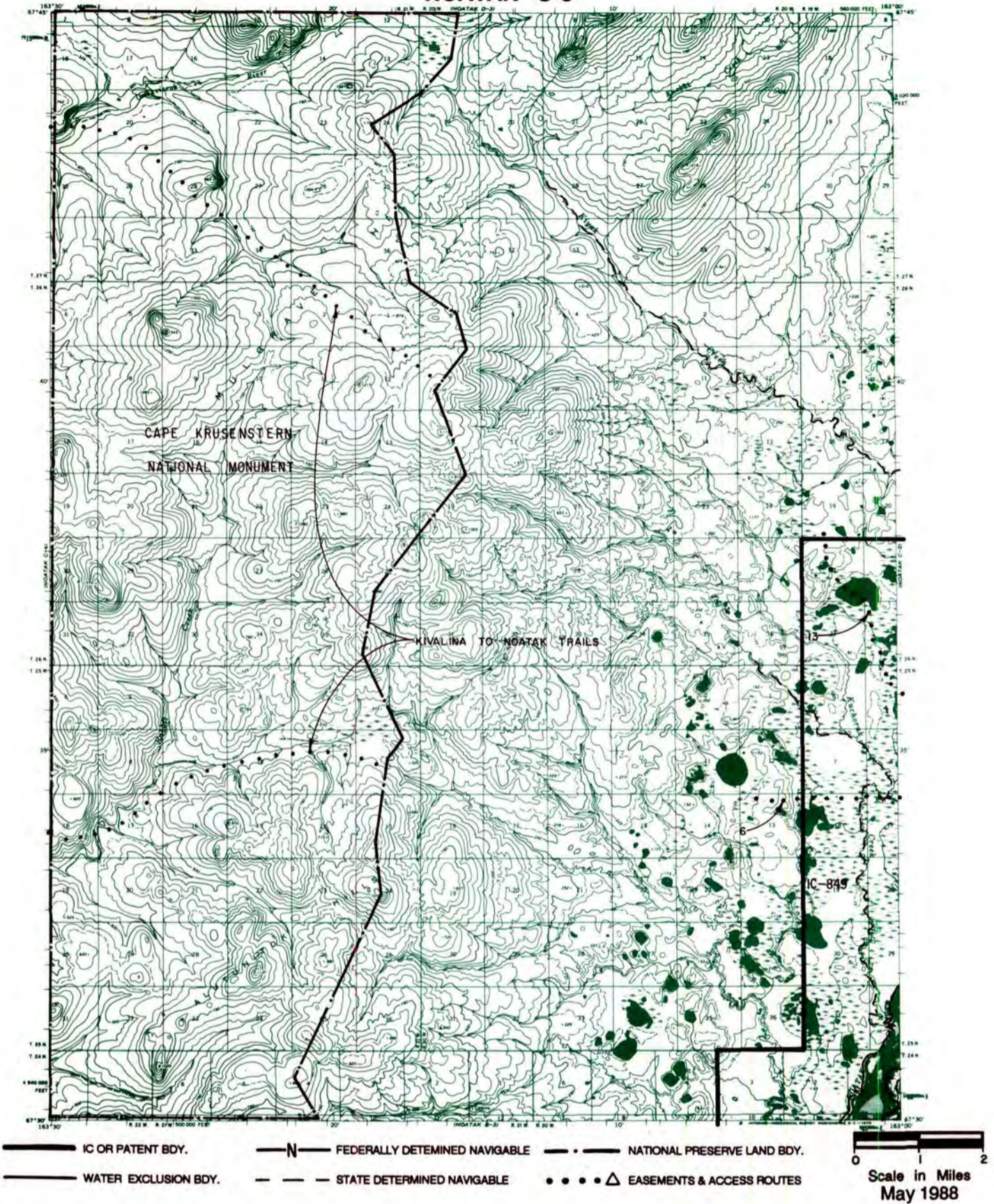
- | | | |
|--------------------------|---|-------------------------------------|
| IC OR PATENT BDY. | N FEDERALLY DETERMINED NAVIGABLE | NATIONAL PRESERVE LAND BDY. |
| WATER EXCLUSION BDY. | STATE DETERMINED NAVIGABLE | • • • • Δ EASEMENTS & ACCESS ROUTES |



RESERVED EASEMENTS

- EIN 6** An easement for an access trail, twenty-five (25) feet in width, from Noatak in Sections 9 and 16, T. 25 N., R. 19 W., K.R.M., westerly to public land.
- EIN 11** An easement twenty-five (25) feet in width for an access trail beginning at trail EIN 13 on the right bank (looking downstream) of the Noatak River in Section 9, T. 25 N., R. 19 W., K.R.M., southeasterly to public land. The season of use is limited to winter.
- EIN 13** An easement for an access trail, twenty-five (25) feet in width, beginning in Section 9, T. 25 N., R. 19 W., K.R.M., northwesterly to public land. The season of use is limited to winter.
- EIN 16** A one (1) acre site easement upland of the ordinary high water mark on the left bank (looking downstream) of the Noatak River in Section 36, T. 27 N., R. 19 W., K.R.M.

NOATAK C-3

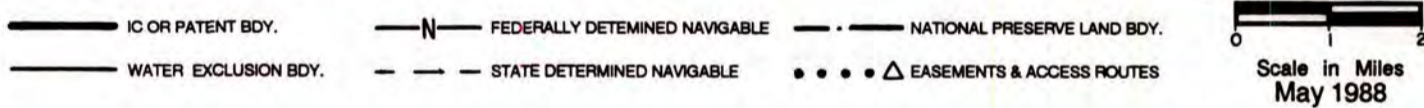
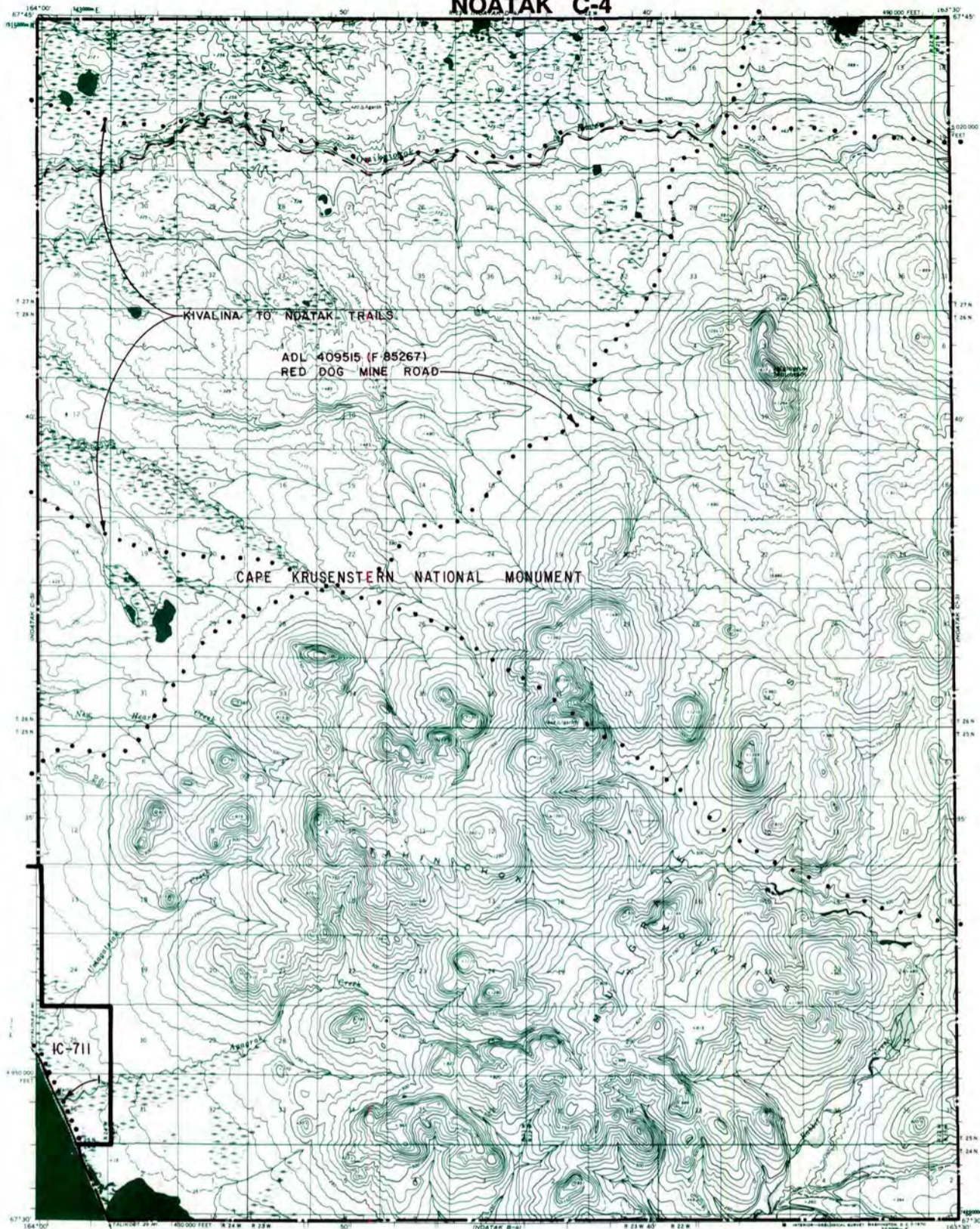


RESERVED EASEMENTS

- EIN 6** An easement for an access trail, twenty-five (25) feet in width, from Noatak in Sections 9 and 16, T. 25 N., R. 19 W., K.R.M., westerly to public land.
- EIN 13** An easement for an access trail, twenty-five (25) feet in width, beginning in Section 9, T. 25 N., R. 19 W., K.R.M., northwesterly to public land. The season of use is limited to winter.

National Park Service Kivalina to Noatak trails.

NOATAK C-4

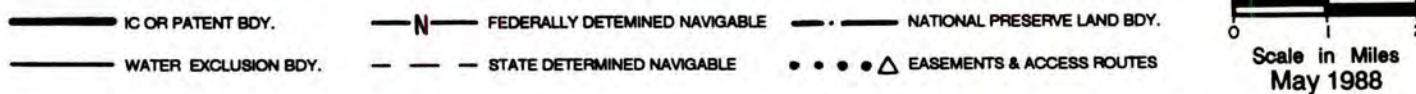
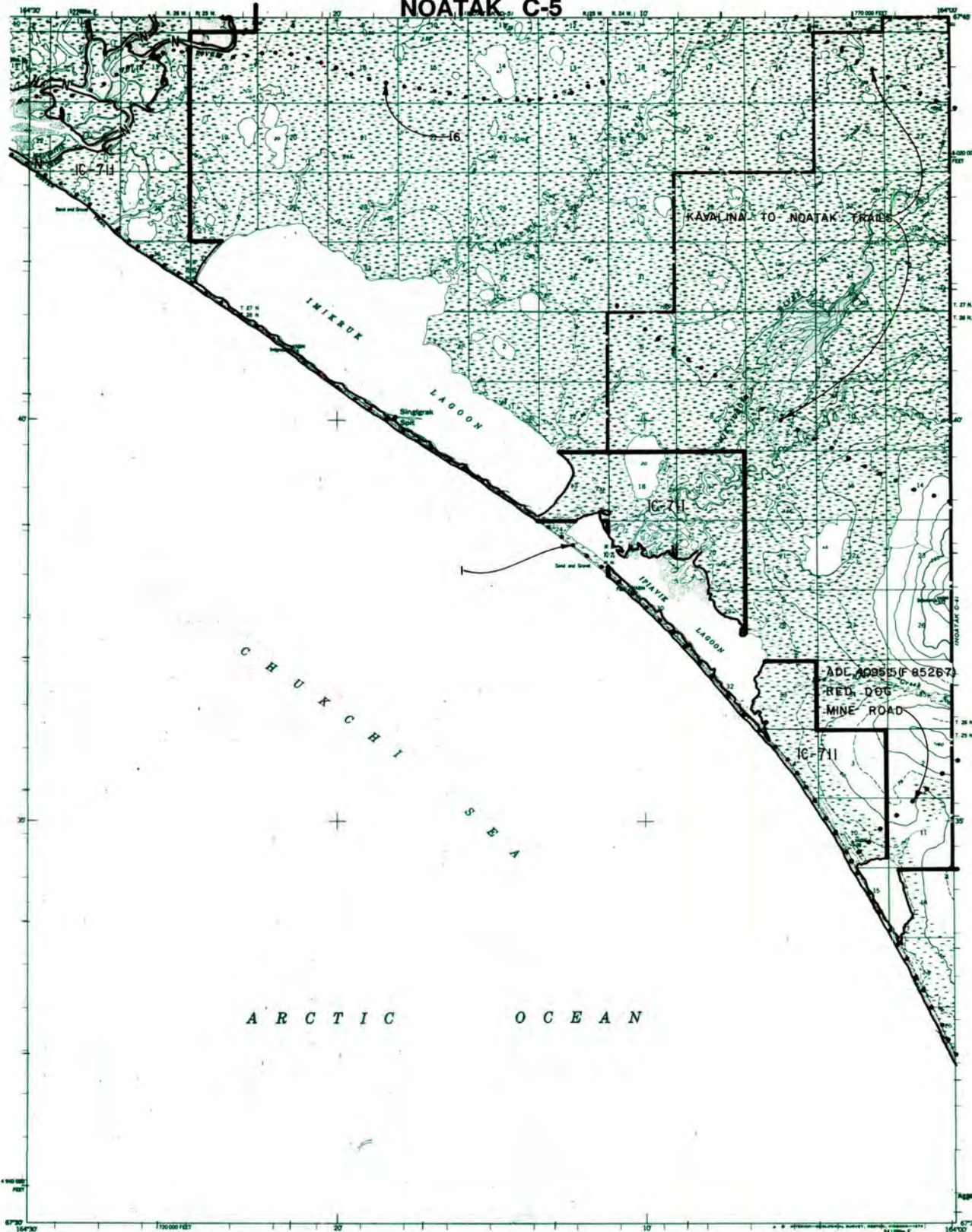


RESERVED EASEMENTS

- EIN 1** An easement for an access trail twenty-five (25) feet in width from Section 36, T. 25 N., R. 24 W., K.R.M., northwesterly to Section 32, T. 29 N., R. 27 W., K.R.M. The season of use is limited to winter only.
- ADL 409515 (F 85267)** Public right-of-way for transportation corridor and 250 foot wide access roads to material sites; right-of-way is 600 feet in width from the Chukchi Sea, T. 25 N., R. 24 W., K.R.M. northeasterly to the Red Dog Mine.

National Park Service Kivalina to Noatak trails.

NOATAK C-5

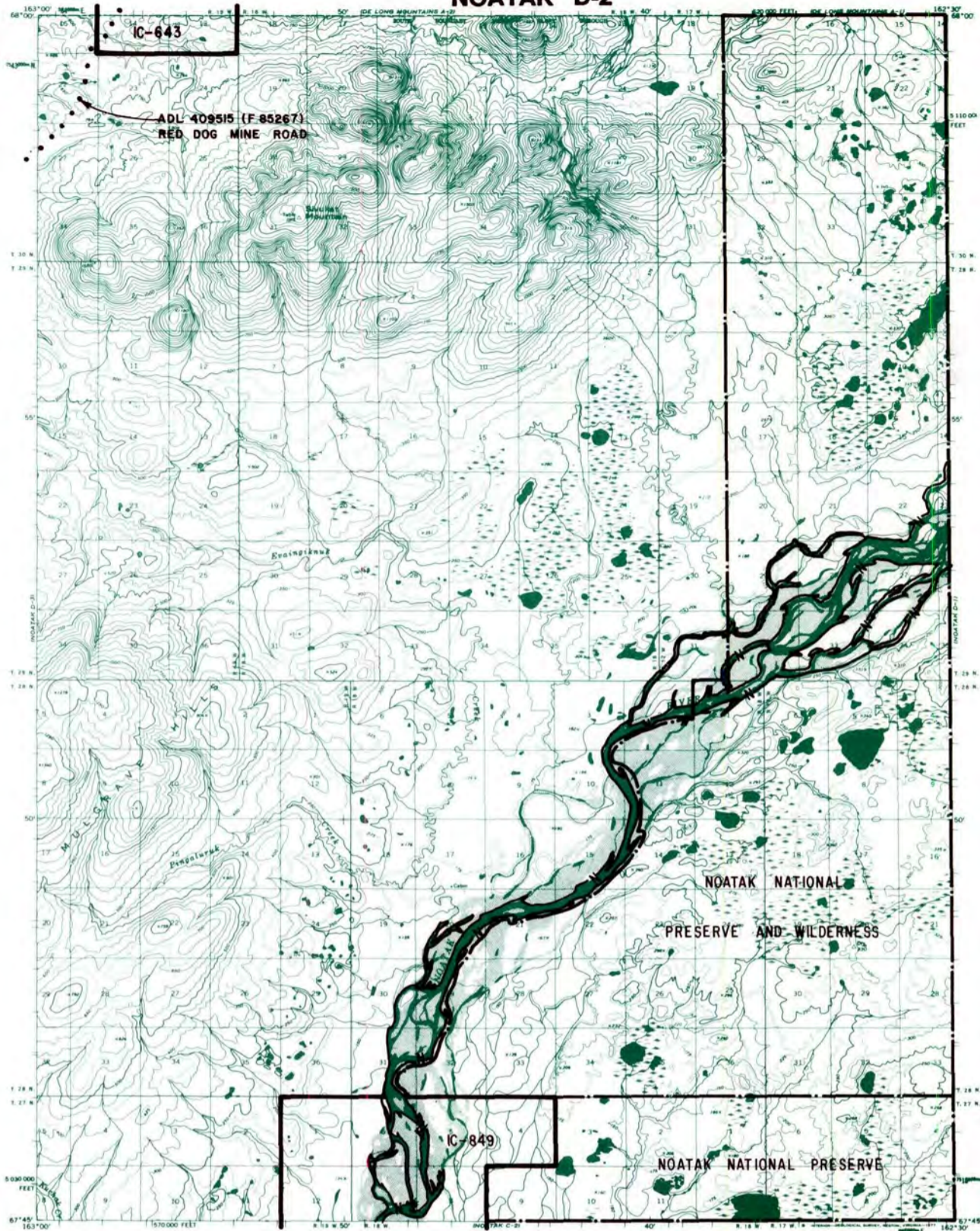


RESERVED EASEMENTS

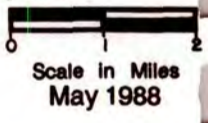
- EIN 1** An easement for an access trail twenty-five (25) feet in width from Section 36, T. 25 N., R. 24 W., K.R.M., northwesterly to Section 32, T. 29 N., R. 27 W., K.R.M. The season is limited to winter only.
- EIN 16** An easement for an access trail twenty-five (25) feet in width from Section 21, T. 27 N., R. 26 W., K.R.M., easterly to public land.
- ADL 409515 (F 85267)** Public right-of-way for transportation corridor and 250 foot wide access roads to material sites; right-of-way is 600 feet in width from the Chukchi Sea, T. 25 N., R. 24 W., K.R.M., northeasterly to the Red Dog Mining project.

National Park Service Kivalina to Noatak trails.

NOATAK D-2



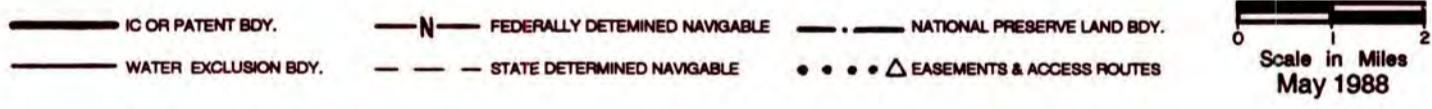
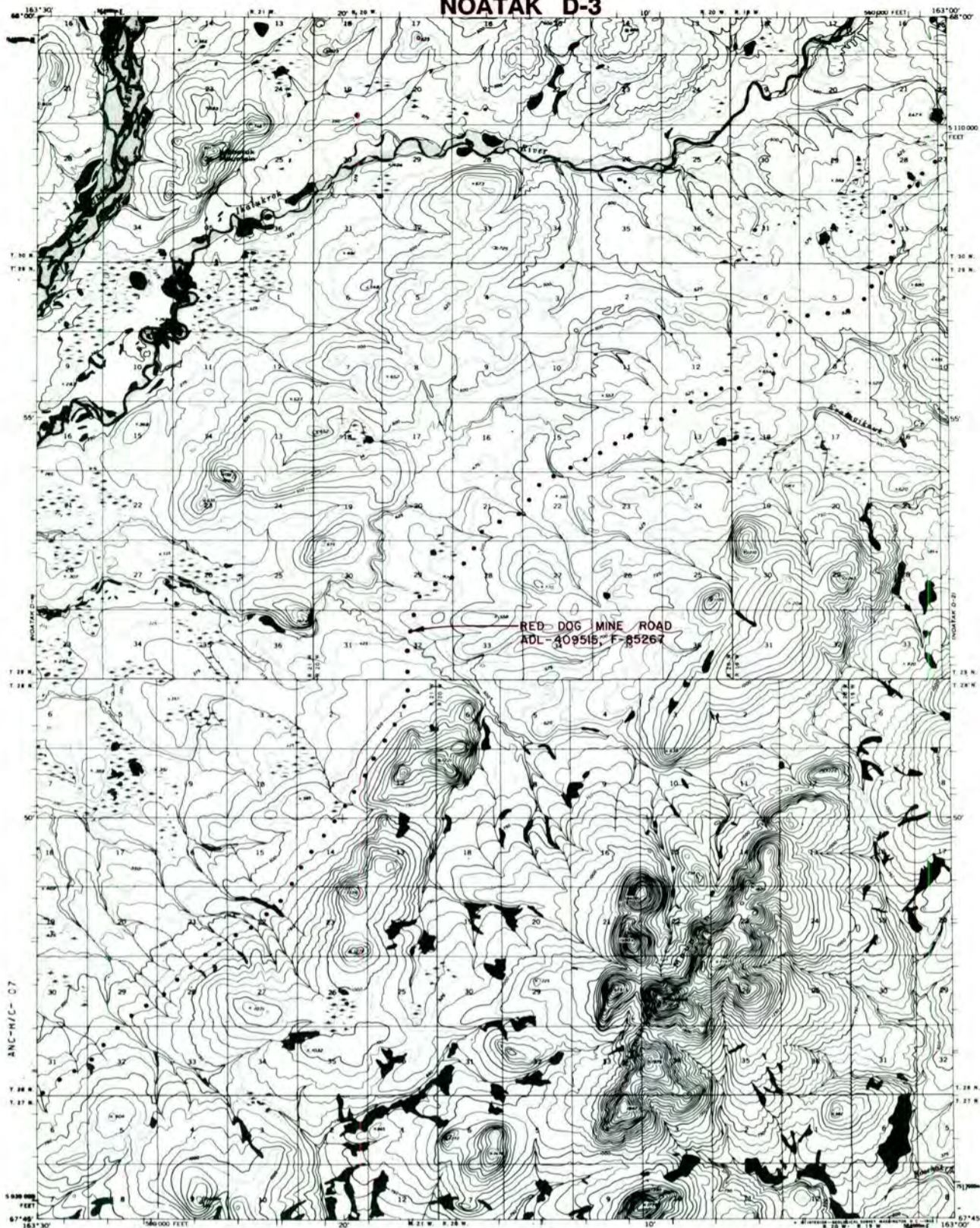
- IC OR PATENT BDY.
- N — FEDERALLY DETERMINED NAVIGABLE
- . . . — NATIONAL PRESERVE LAND BDY.
- WATER EXCLUSION BDY.
- — — STATE DETERMINED NAVIGABLE
- • • Δ EASEMENTS & ACCESS ROUTES



RESERVED EASEMENTS

ADL 409515 (F 85267) Public right-of-way for transportation corridor and 250 foot wide access roads to material sites; right-of-way is 600 feet in width from the Chukchi Sea, T. 25 N., R. 24 W., K.R.M., northeasterly to the Red Dog Mine.

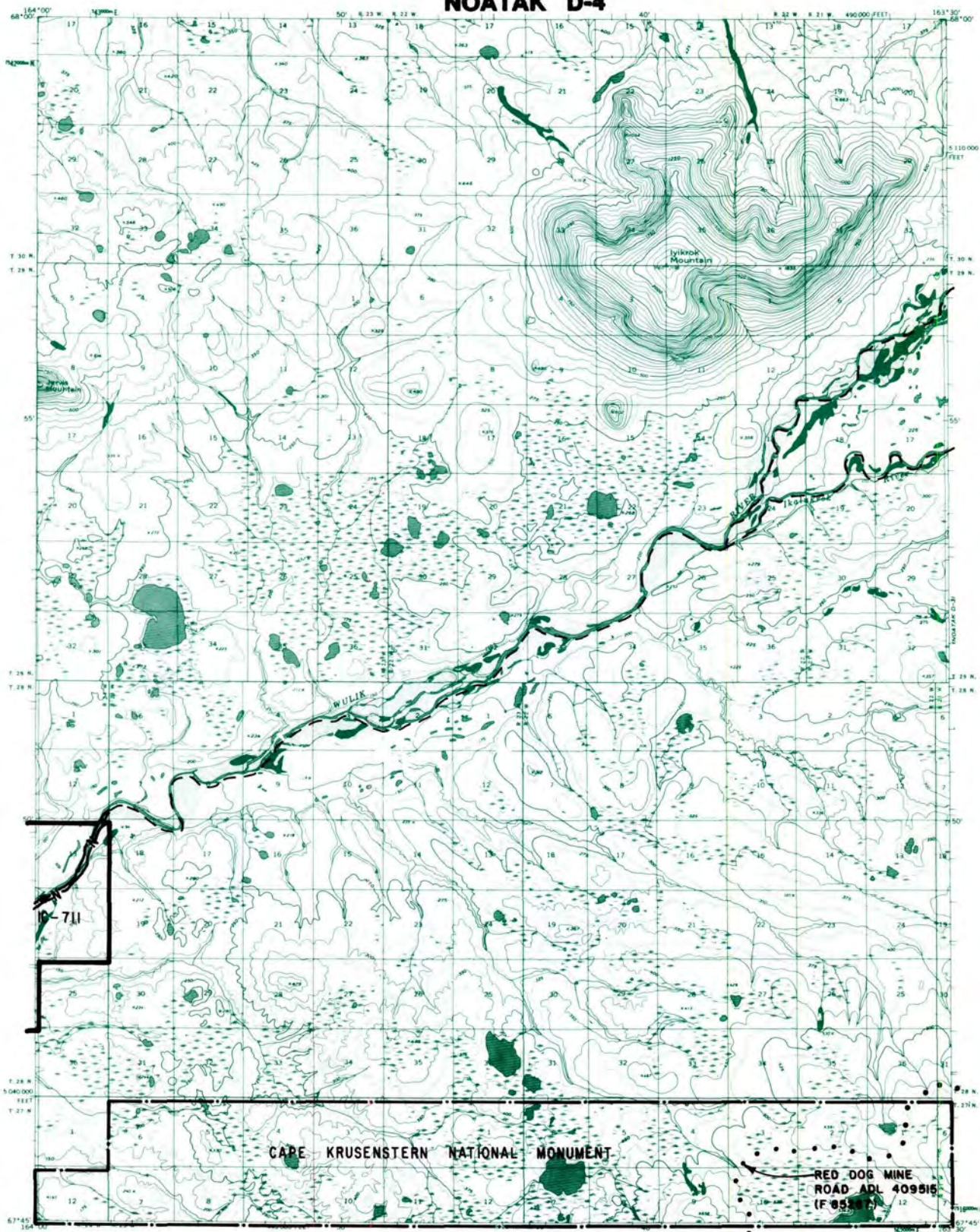
NOATAK D-3



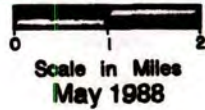
RESERVED EASEMENTS

ADL 409515 (F 85267) Public right-of-way for transportation corridor and 250 foot wide access roads to material sites; right-of-way is 600 feet in width from the Chukchi Sea beginning in T. 25 N., R. 24 W., K.R.M., thence northeasterly to the Red Dog Mine.

NOATAK D-4



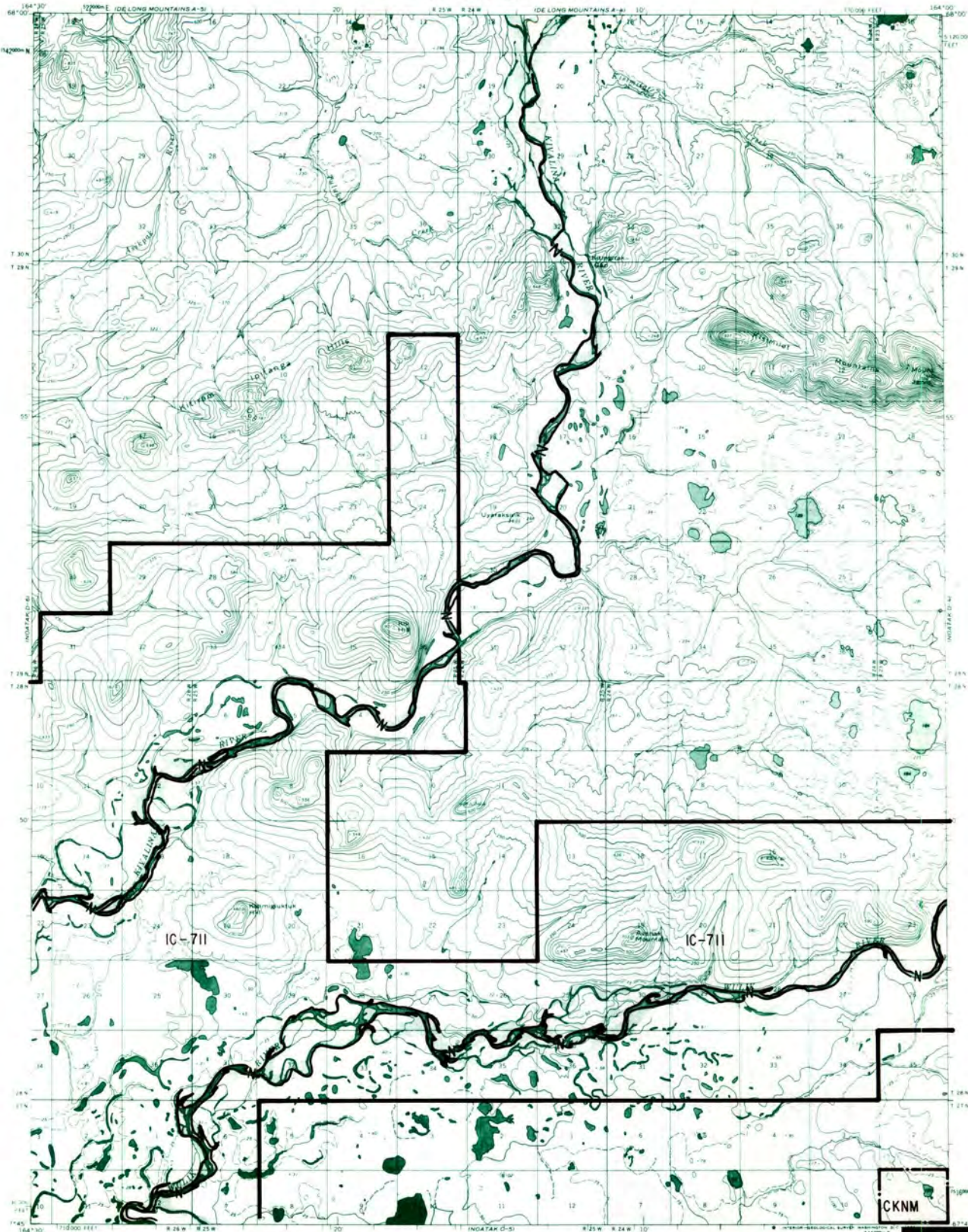
- IC OR PATENT BDY.
- N — FEDERALLY DETERMINED NAVIGABLE
- · — NATIONAL PRESERVE LAND BDY.
- WATER EXCLUSION BDY.
- — STATE DETERMINED NAVIGABLE
- • • • Δ EASEMENTS & ACCESS ROUTES



RESERVED EASEMENTS

ADL 409515 (F 85267) Public right-of-way for transportation corridor and 250 foot wide access roads to material sites; right-of-way is 600 feet in width from the Chukchi Sea, T. 25 N., R. 24 W., K.R.M., northeasterly to the Red Dog Mine.

NOATAK D-5



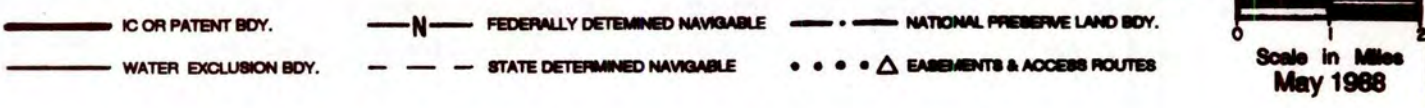
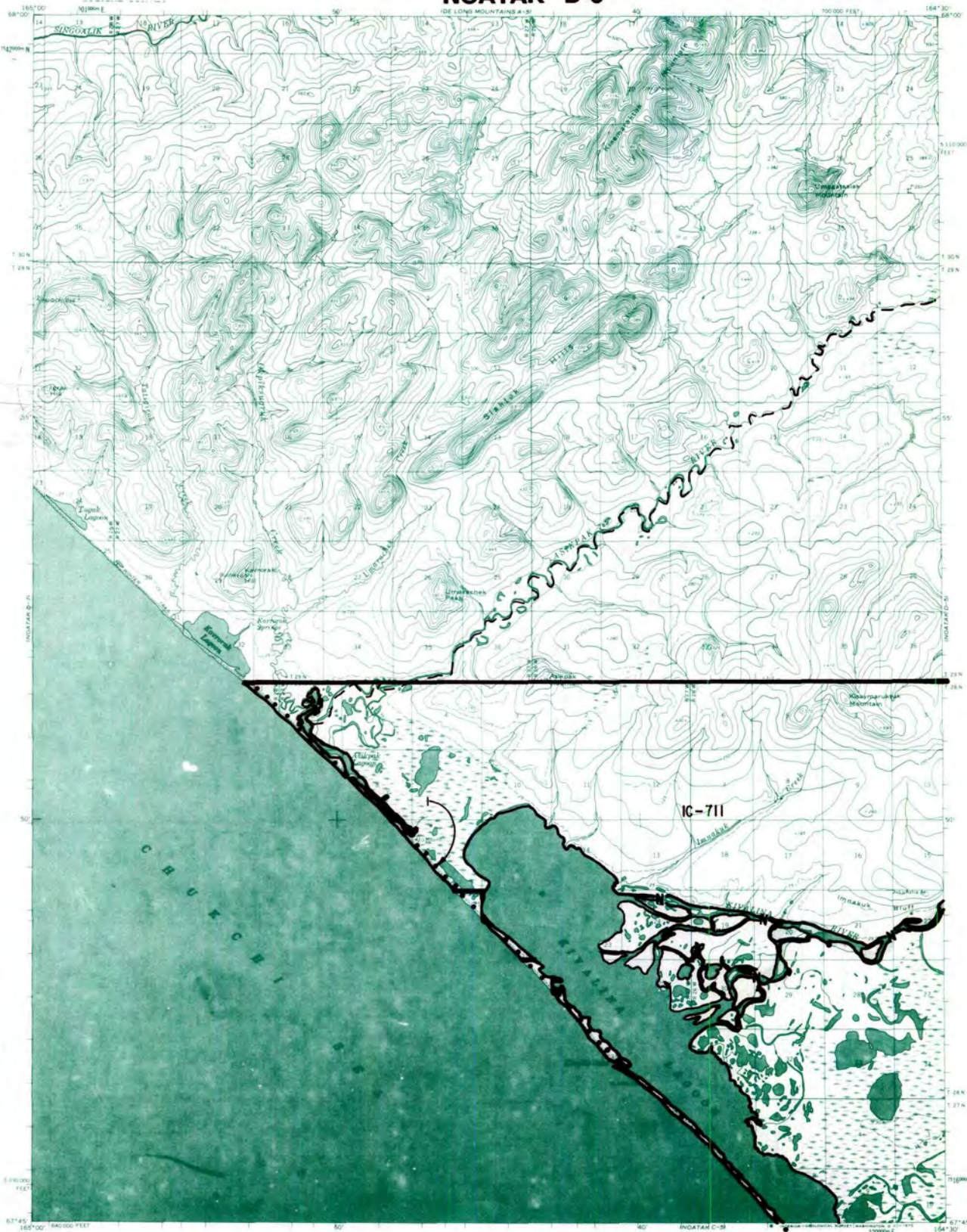
— IC OR PATENT BDY.	N FEDERALLY DETERMINED NAVIGABLE	— . — . — . NATIONAL PRESERVE LAND BDY.
— WATER EXCLUSION BDY.	- - - STATE DETERMINED NAVIGABLE	• • • • Δ EASEMENTS & ACCESS ROUTES

Scale in Miles
May 1988

RESERVED EASEMENTS

No easements reserved.

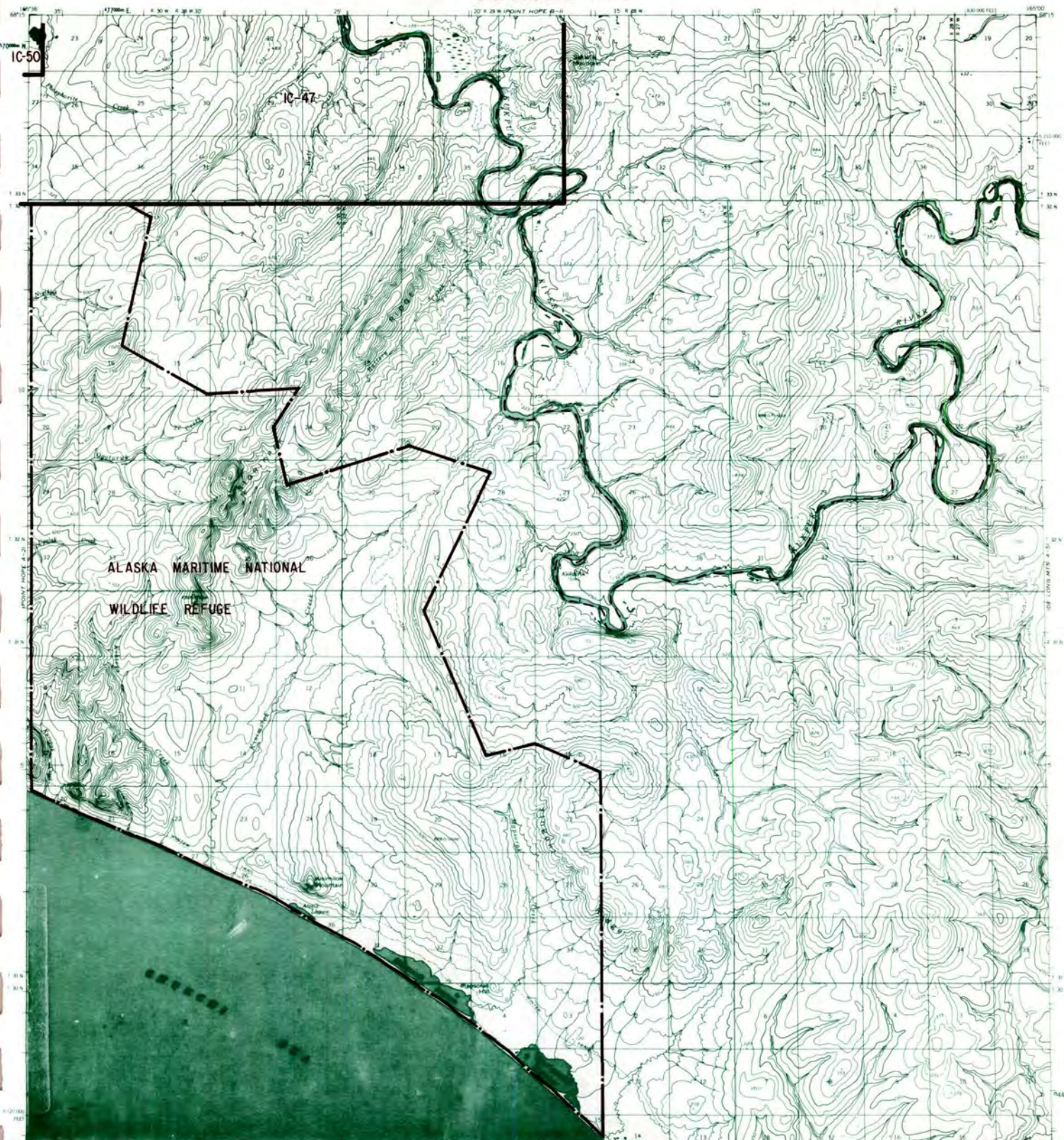
NOATAK D-6



RESERVED EASEMENTS

EIN 1 An easement for an access trail twenty-five (25) feet in width from Section 36, T. 25 N., R. 24 W., K.R.M., northwesterly to Section 32, T. 29 N., R. 27 W., K.R.M. The season of use is limited to winter only.

Pt. HOPE A-1

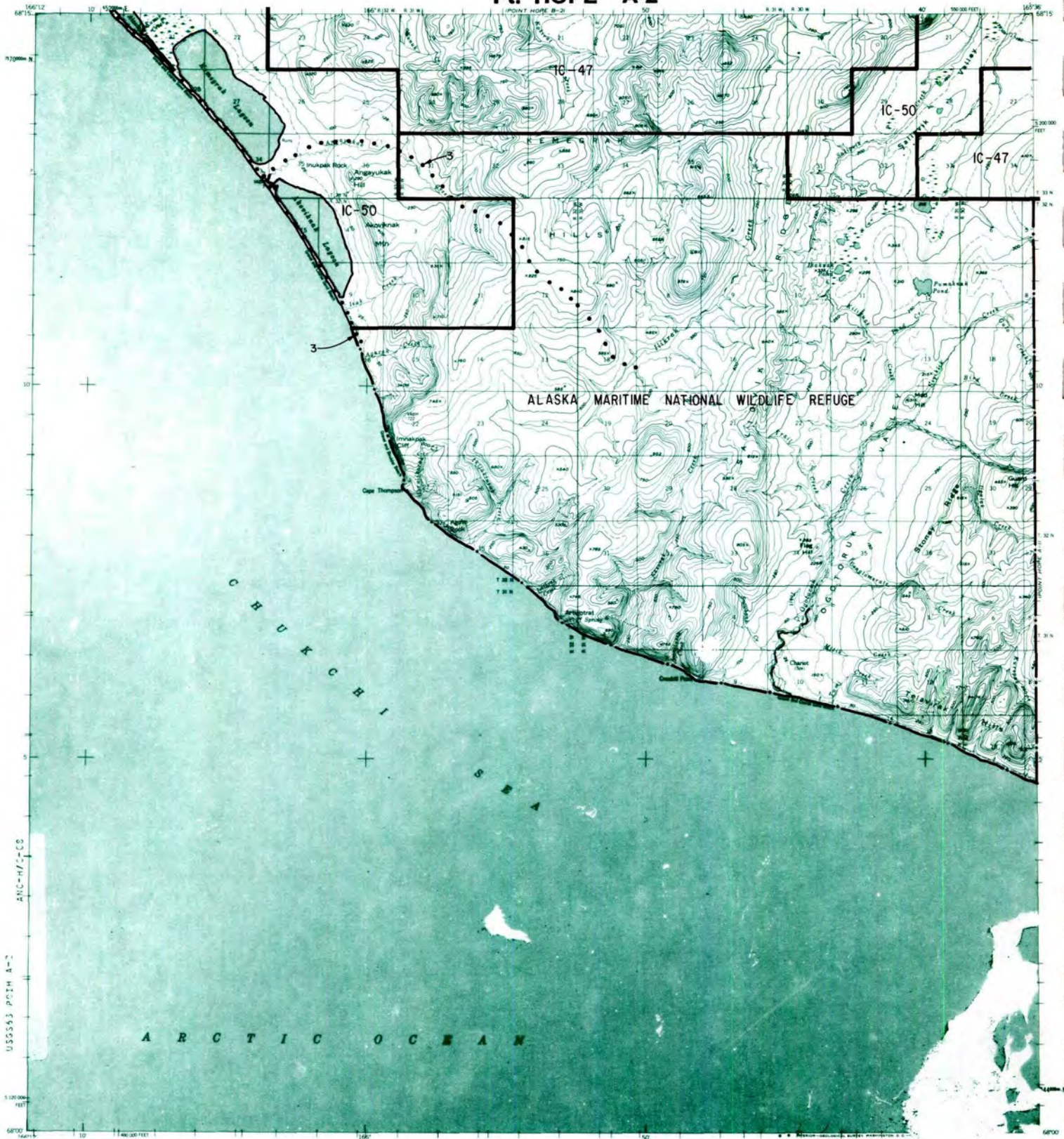


- IC OR PATENT BDY.
 - N — FEDERALLY DETERMINED NAVIGABLE
 - • — NATIONAL PRESERVE LAND BDY.
 - WATER EXCLUSION BDY.
 - - - STATE DETERMINED NAVIGABLE
 - • • Δ EASEMENTS & ACCESS ROUTES
- 0 1 2
Scale in Miles
May 1988

RESERVED EASEMENTS

No easements reserved.

Pt. HOPE A-2



- IC OR PATENT BDY.
- N — FEDERALLY DETERMINED NAVIGABLE
- • — NATIONAL PRESERVE LAND BDY.
- WATER EXCLUSION BDY.
- - - STATE DETERMINED NAVIGABLE
- • • • Δ EASEMENTS & ACCESS ROUTES

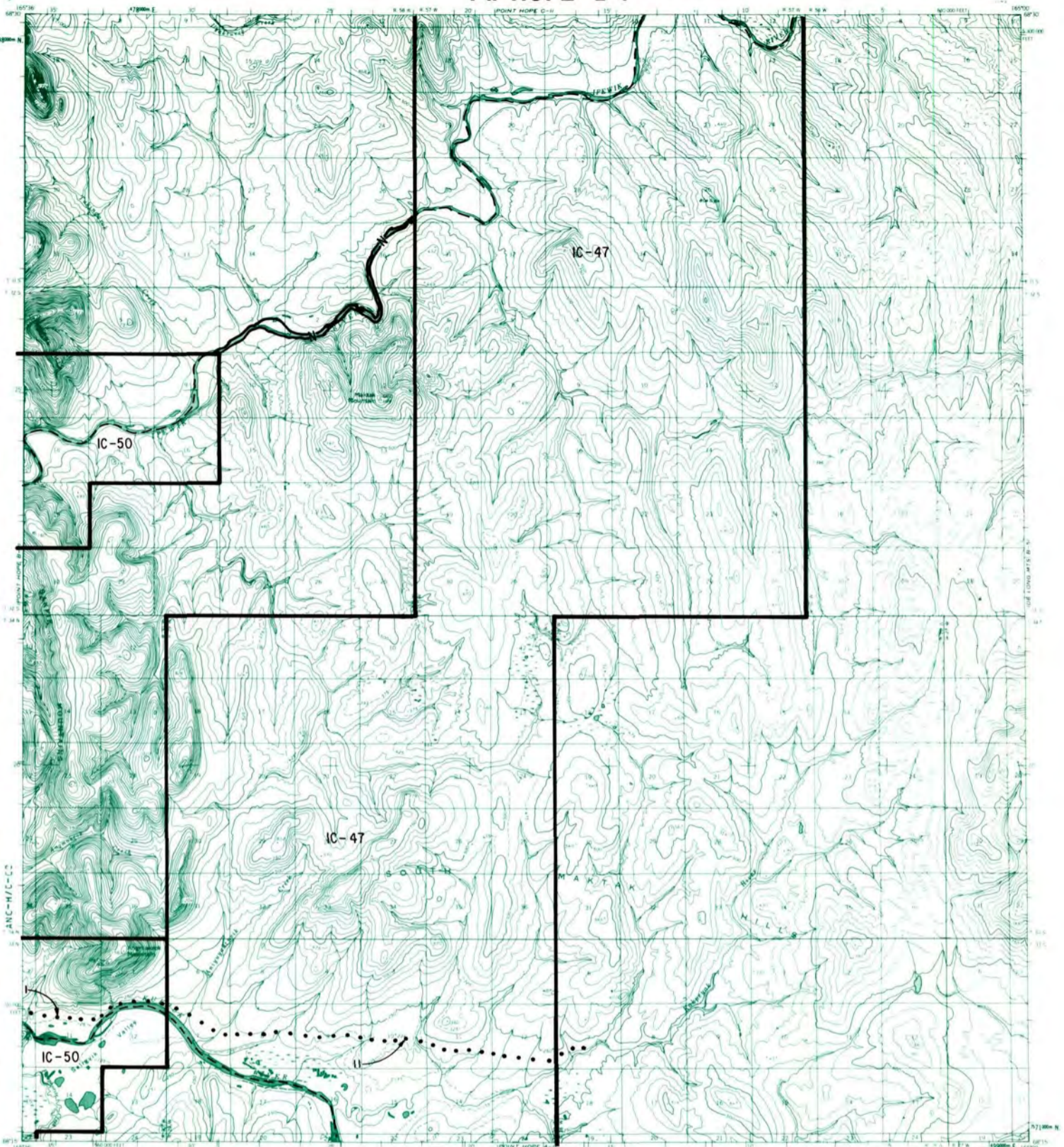


RESERVED EASEMENTS

EIN 3

An easement twenty-five (25) feet in width for access to and from public land via a trail which proceeds north and south from Point Hope. In the area north of Cape Thompson, a branch of this trail proceeds easterly.

Pt. HOPE B-1



IC OR PATENT BDY.	FEDERALLY DETERMINED NAVIGABLE	NATIONAL PRESERVE LAND BDY.
WATER EXCLUSION BDY.	STATE DETERMINED NAVIGABLE	EASEMENTS & ACCESS ROUTES

0 1 2
Scale in Miles
May 1988

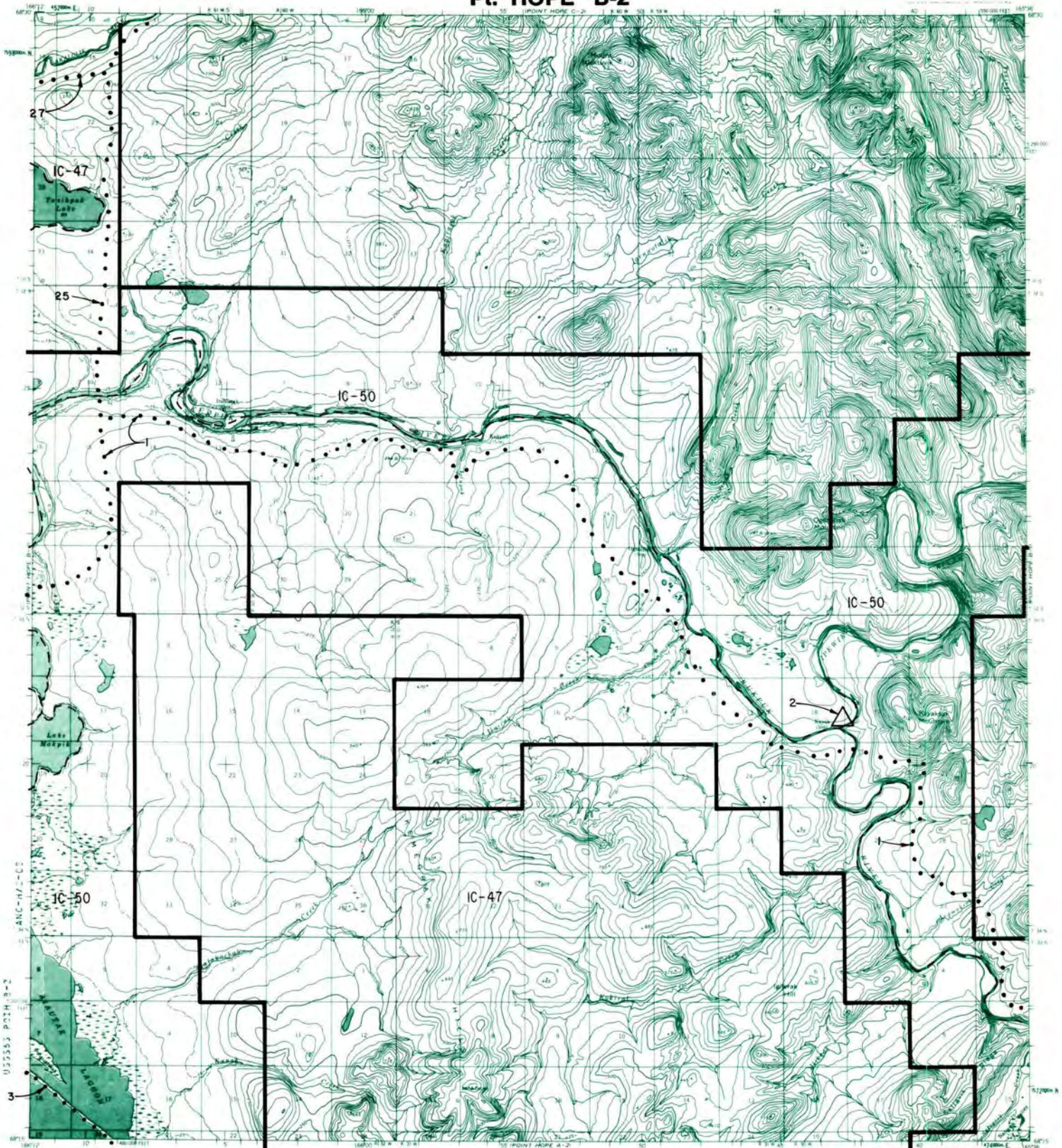
RESERVED EASEMENTS

EIN 1 A road easement one hundred (100) feet in width for access to and from public land. The easement extends from Point Hope easterly along the coast south of Marrayat Inlet, then northeasterly to the Kukukuk River area where one branch crosses the Kukukuk River and goes north across the left bank (looking downstream) of the Kukukuk River and connects with EIN 11 which goes to public land.

EIN 11 A road easement one hundred (100) feet in width for use by the public to gain access from Point Hope EIN 1 to public land in the Upper Kukukuk River area.



Pt. HOPE B-2



- IC OR PATENT BDY.
- N — FEDERALLY DETERMINED NAVIGABLE
- • — NATIONAL PRESERVE LAND BDY.
- WATER EXCLUSION BDY.
- - - STATE DETERMINED NAVIGABLE
- • • Δ EASEMENTS & ACCESS ROUTES

0 1 2
Scale in Miles
May 1988

RESERVED EASEMENTS

- EIN 1** A road easement one hundred (100) feet in width for access to and from public land. Said easement extends from Point Hope easterly along the coast south of Marrayat Inlet, then northeasterly to the Kukpuk River area where one branch crosses the Kukpuk River and goes north as EIN 25 to public land. The other branch continues along the left bank of the Kukpuk River easterly, and connects with EIN 11 which crosses to public land.
- EIN 2** A one (1) acre site easement for boat landing, camping, and related uses, located on the right bank (looking downstream) of the Kukpuk River at the junction of the Kukpuk and Ipewik rivers. The site easement extends twenty-five (25) feet into the water. That portion extending into the water is in addition to the one (1) acre on the land.
- EIN 3** An easement twenty-five (25) feet in width for access to and from public land via a trail which proceeds north and south from Point Hope. In the area north of Cape Thompson, a branch of this trail proceeds easterly and connects with EIN 12, which crosses into the upper Ogotoruk Valley.

Continued Next Page

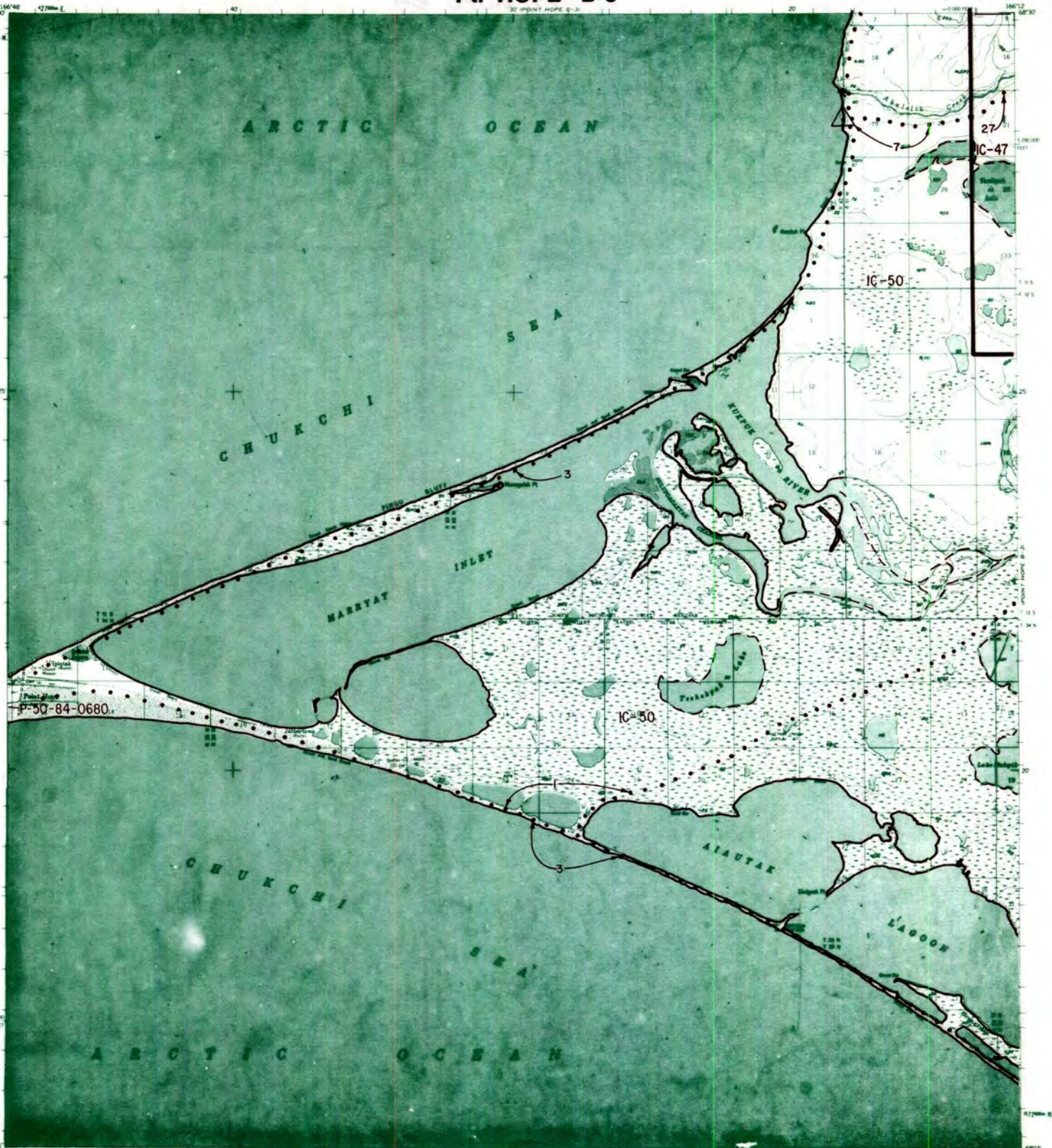
EIN 25

A one hundred (100) foot road easement for use by the public to gain access to and from public land, which is an extension of Point Hope easement EIN 1 after it crosses the Kukpuk River and proceeds northerly into Sections 15, 22, 27 and 34 of T. 11 S., R. 61 W., U.M., and protracted Section 3 of T. 12 S., R. 61 W., U.M.

EIN 27

A fifty (50) foot trail easement for use by the public to gain access to public land, going generally along the left bank (looking downstream) of Akalolik Creek as an extension of Point Hope easement EIN 7. The trail leads in an easterly direction across Sections 15, 16 and 21 of T. 11 S., R. 61 W., U.M., to public land.

Pt. HOPE B-3



IC OR PATENT BDY.
 FEDERALLY DETERMINED NAVIGABLE
 NATIONAL PRESERVE LAND BDY.

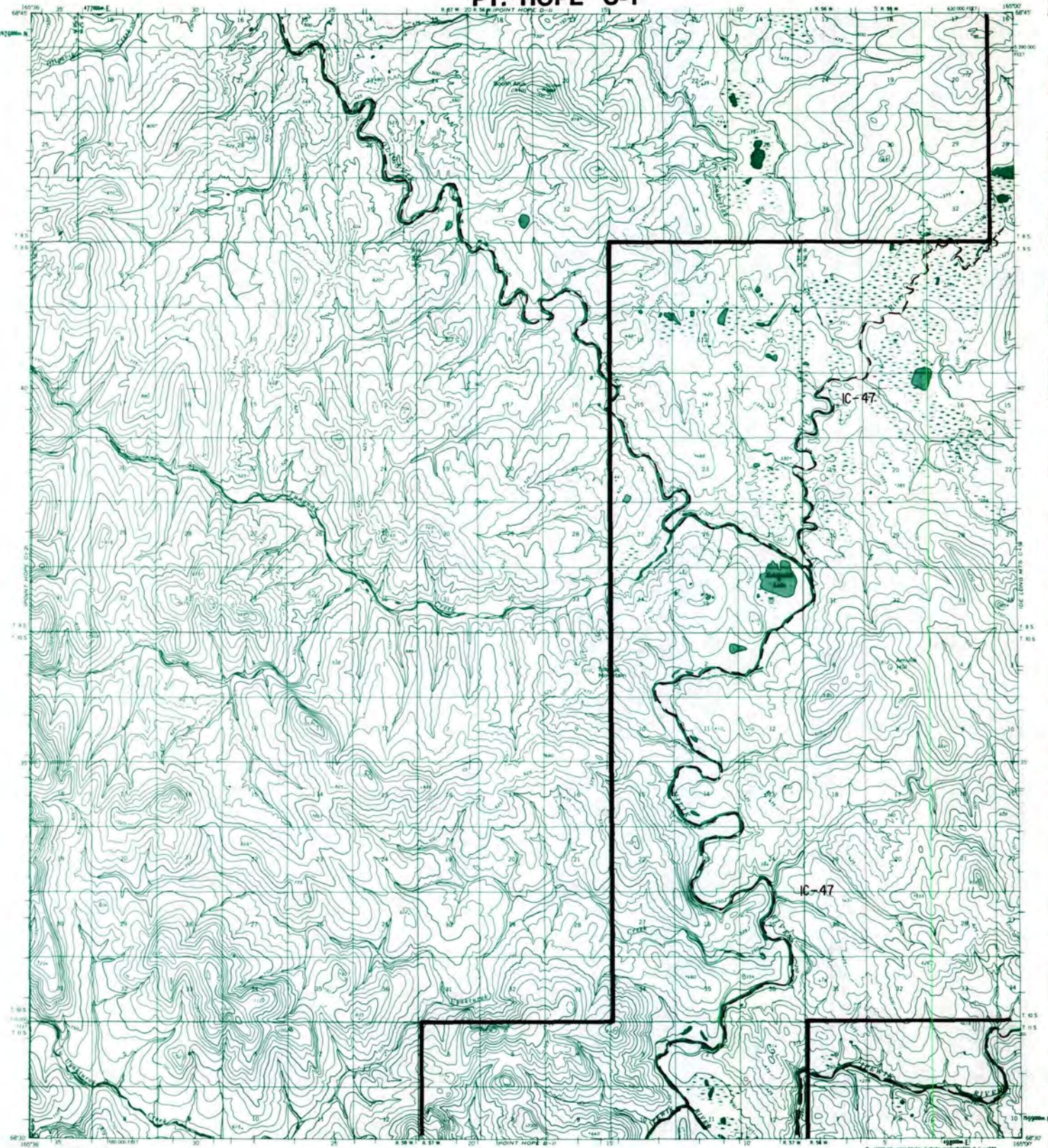
WATER EXCLUSION BDY.
 STATE DETERMINED NAVIGABLE
 ••••• △ EASEMENTS & ACCESS ROUTES

Scale in Miles
 May 1988

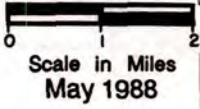
RESERVED EASEMENTS

- EIN 1** A road easement one hundred (100) feet in width for access to and from public land. Said easement extends from Point Hope easterly along the coast south of Marryat Inlet, then northeasterly to the Kukpuk River area where one branch crosses the Kukpuk River and goes north as EIN 25 to public land. The other branch continues along the left bank (looking downstream) of the Kukpuk River easterly through the village selection, and connects with EIN 11 which goes to public land.
- EIN 3** An easement twenty-five (25) feet in width for access to and from public land via a trail which proceeds north and south from Point Hope. In the area north of Cape Thompson, a proposed branch of this trail proceeds easterly through the village selection and connects with EIN 12, which crosses into the upper Ogotoruk Valley.
- EIN 7** An easement fifty (50) feet in width for a trail for access to and from public land along the left bank (looking downstream) of Akalolik Creek, and connecting with EIN 27, which crosses into public land. Also included is a two (2) acre site easement on the coast for a staging area for access to public land.
- EIN 27** A proposed fifty (50) foot trail easement for use by the public to gain access to public land, going generally along the left bank (looking downstream) of Akalolik Creek as an extension of Point Hope easement EIN 7. The trail leads in an easterly direction to public land.

PT. HOPE C-1



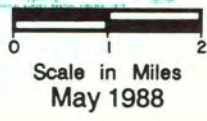
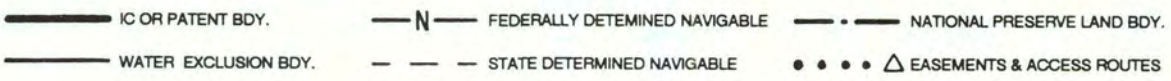
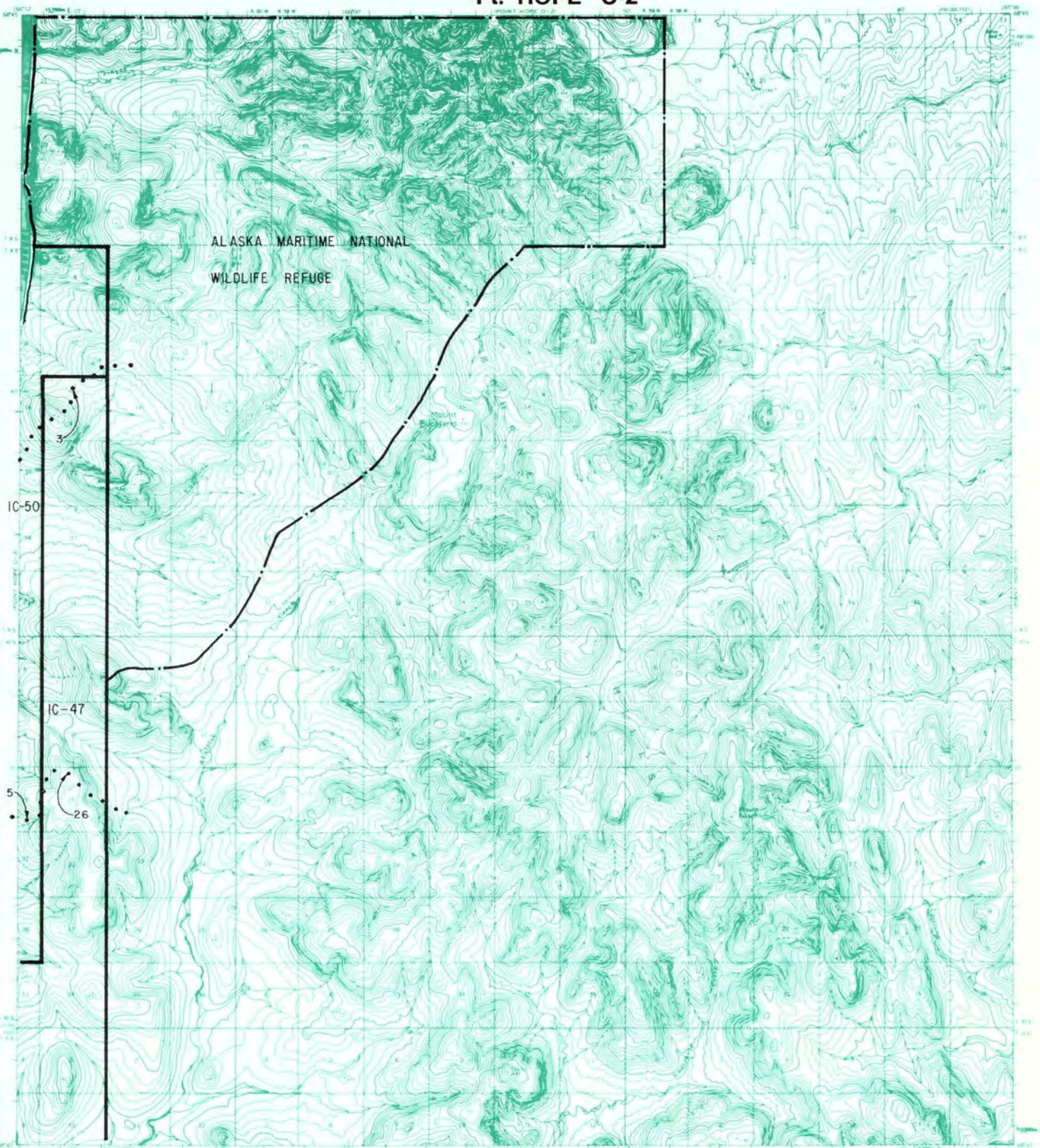
- IC OR PATENT BDY.
- N— FEDERALLY DETERMINED NAVIGABLE
- · — NATIONAL PRESERVE LAND BDY.
- WATER EXCLUSION BDY.
- — STATE DETERMINED NAVIGABLE
- • • Δ EASEMENTS & ACCESS ROUTES



RESERVED EASEMENTS

No easements reserved.

Pt. HOPE C-2

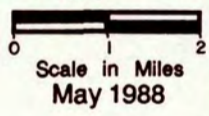
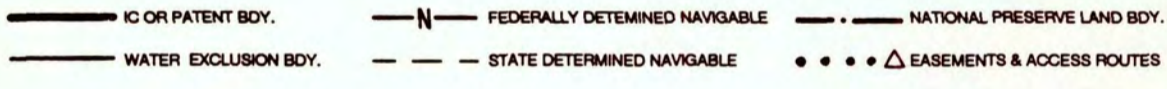
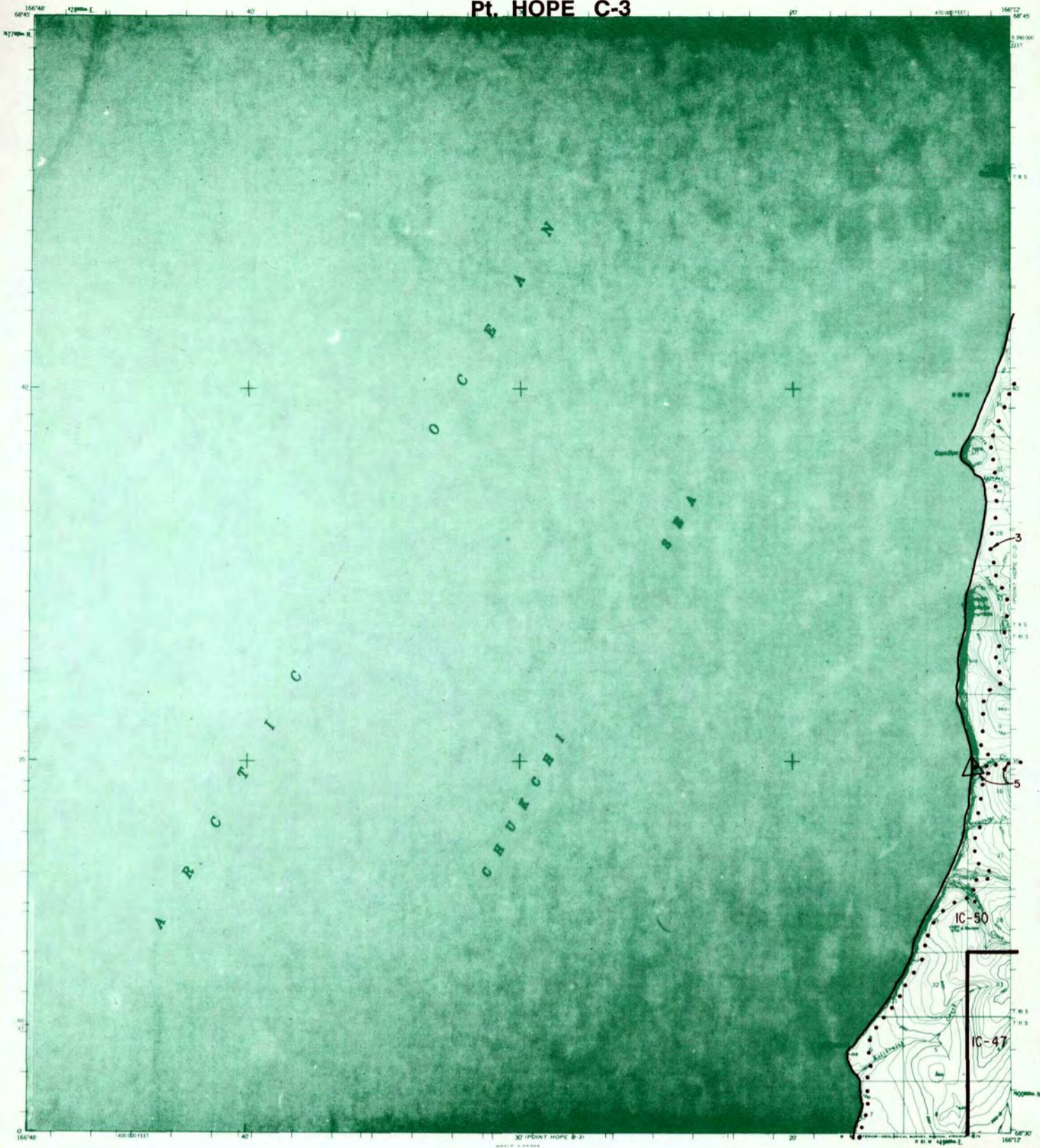


RESERVED EASEMENTS

- EIN 3** An easement twenty-five (25) feet in width for access to and from public land via a trail which proceeds north and south from Point Hope. In the area north of Cape Thompson, a branch of this trail proceeds easterly and connects with EIN 12, which crosses into the upper Ogotoruk Valley.

- EIN 5** An easement fifty (50) feet in width for a trail for access to and from public land along the left bank (looking downstream) of the Haripak Creek, connecting with EIN 26, which crosses into public land.

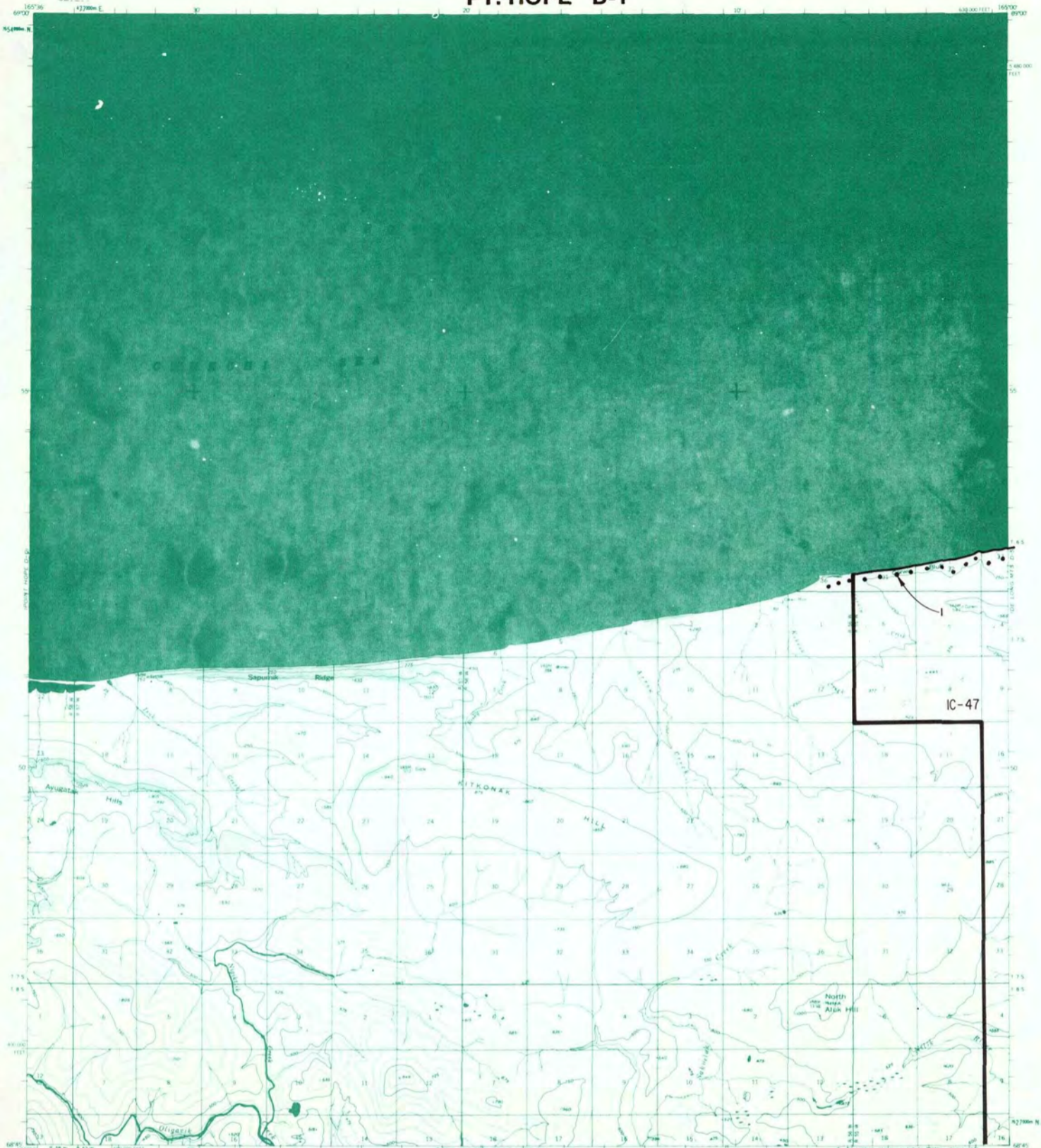
- EIN 26** A fifty (50) foot trail easement for use by the public to gain access to public land, which is an extension of Point Hope easement EIN 5 as it crosses in an easterly direction to public land.



RESERVED EASEMENTS

- EIN 3** An easement twenty-five (25) feet in width for access to and from public land via a trail which proceeds north and south from Point Hope. In the area north of Cape Thompson, a branch of this trail proceeds easterly and connects with EIN 12, which crosses into the upper Ogotoruk Valley.
- EIN 5** An easement fifty (50) feet in width for a trail for access to and from public land along the left bank (looking downstream) of Haripak Creek. Also included is a two (2) acre site easement on the coast for a staging area for access to public land.

PT. HOPE D-1



- IC OR PATENT BDY.
- N — FEDERALLY DETERMINED NAVIGABLE
- • — NATIONAL PRESERVE LAND BDY.
- WATER EXCLUSION BDY.
- — — STATE DETERMINED NAVIGABLE
- • • • Δ EASEMENTS & ACCESS ROUTES

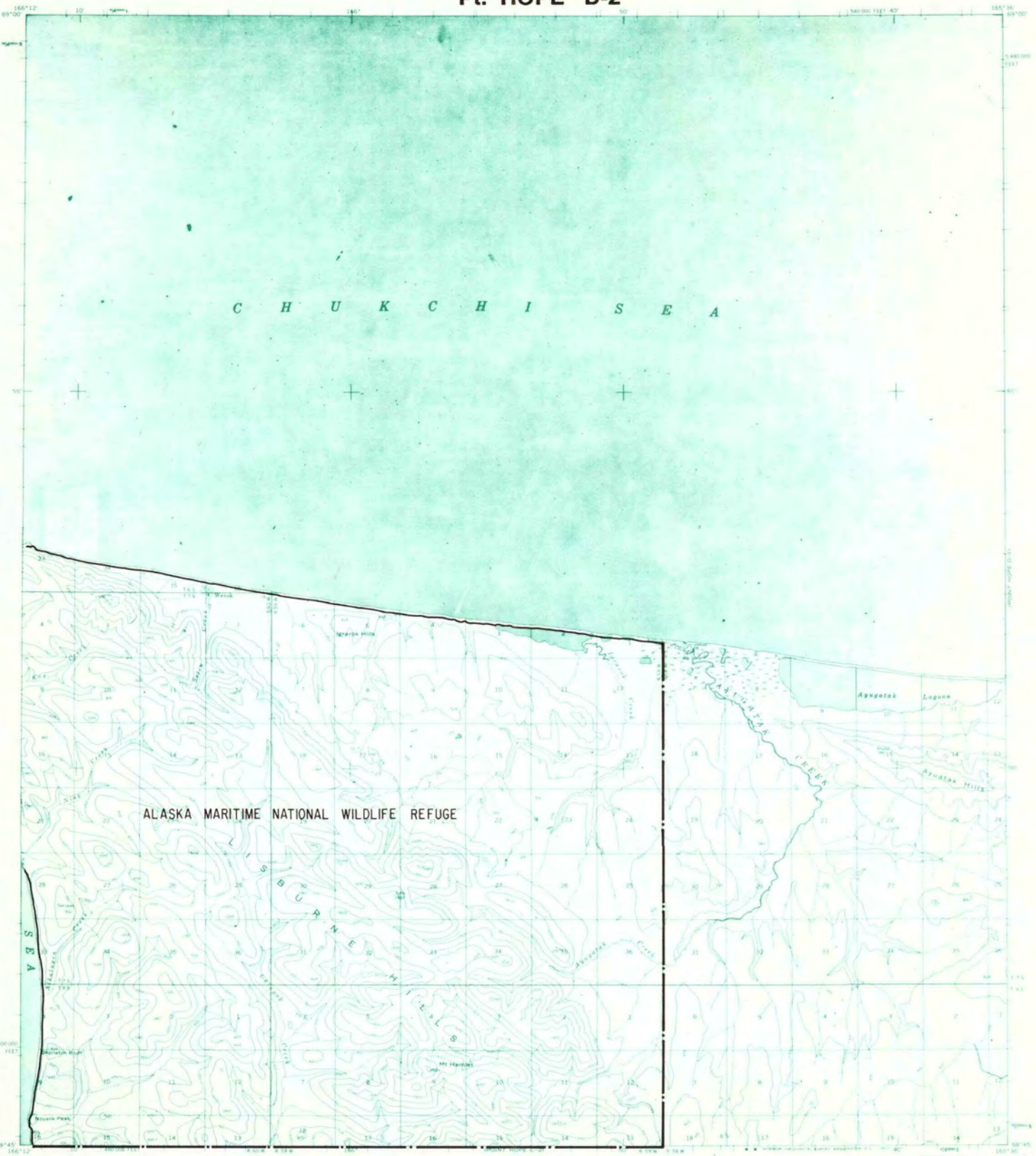


Scale in Miles
May 1988

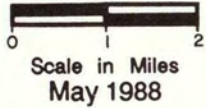
RESERVED EASEMENTS

EIN 1

A twenty-five (25) foot trail easement for use by the public to gain access to and from public land via the existing winter trail along the coast between Barrow and Kotzebue.

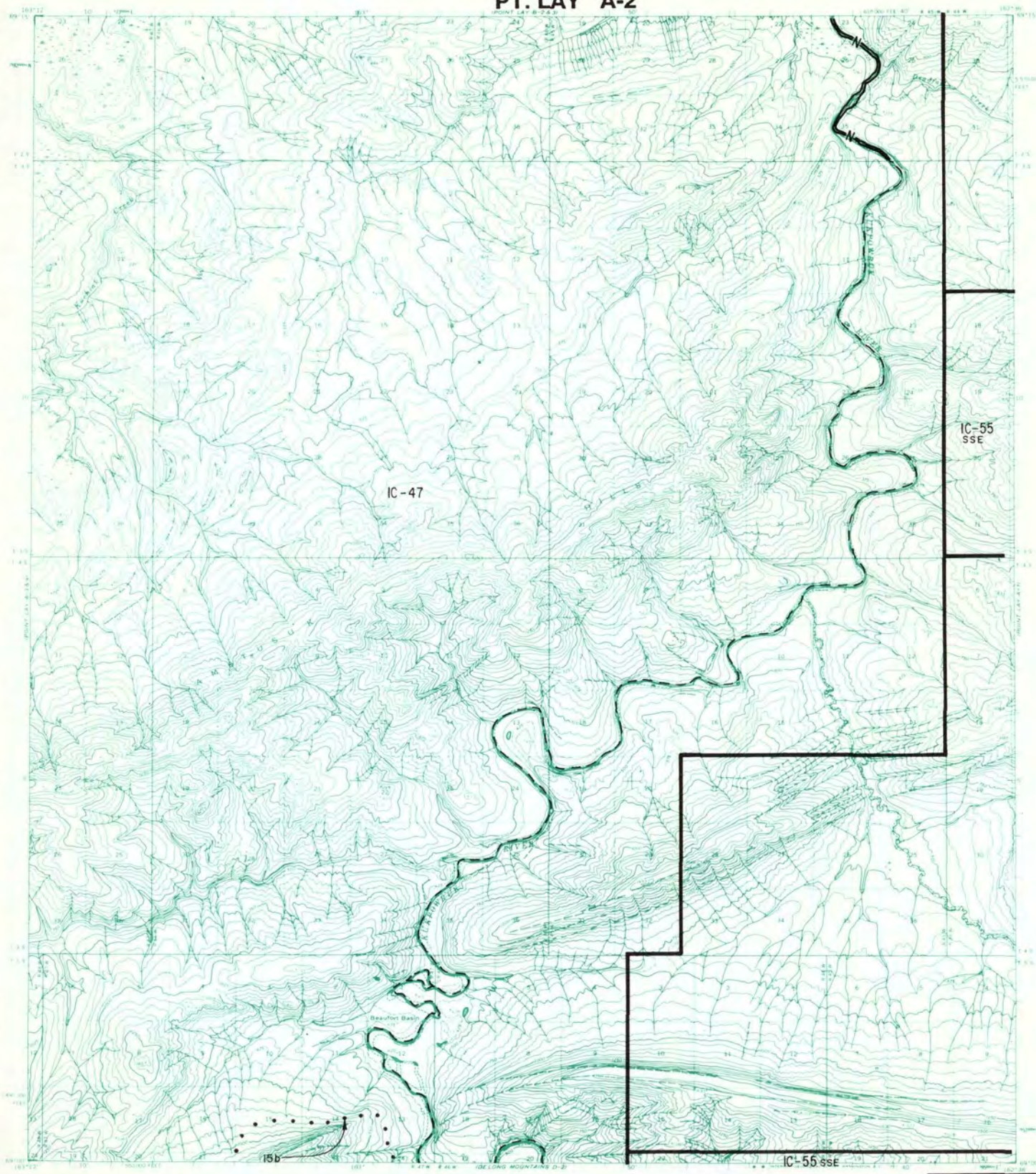


- IC OR PATENT BDY. — N — FEDERALLY DETERMINED NAVIGABLE - - - NATIONAL PRESERVE LAND BDY.
- WATER EXCLUSION BDY. - - - STATE DETERMINED NAVIGABLE •••••△ EASEMENTS & ACCESS ROUTES



RESERVED EASEMENTS

No easements reserved.



- IC OR PATENT BDY.
- N — FEDERALLY DETERMINED NAVIGABLE
- — NATIONAL PRESERVE LAND BDY.
- WATER EXCLUSION BDY.
- — STATE DETERMINED NAVIGABLE
- • • • Δ EASEMENTS & ACCESS ROUTES

0 1 2
Scale in Miles
May 1988

RESERVED EASEMENTS

EIN 15b A fifty (50) foot trail easement for use by the public to gain access to and from public land, at the southerly boundary of the military withdrawal (Public Land Order 3780) in T. 5 S., R. 50 W., U.M. following Kahkatak Creek easterly to public land.