

MEANDERS

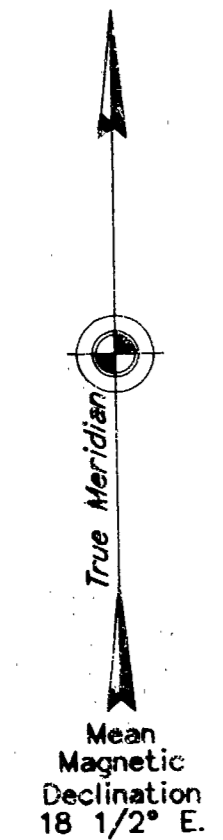
Along a well-defined bank, 4-6 feet high, at the line of ordinary high water.

- | | | | | |
|-----|----|--------|----|----------|
| 1. | S. | 38°18' | E. | 0.54 ch. |
| 2. | S. | 44°30' | E. | 5.81 ch. |
| 3. | S. | 45°34' | E. | 4.61 ch. |
| 4. | S. | 47°55' | E. | 1.66 ch. |
| 5. | S. | 57°24' | E. | 1.02 ch. |
| 6. | S. | 59°54' | E. | 1.10 ch. |
| 7. | S. | 72°22' | E. | 0.89 ch. |
| 8. | S. | 88°52' | E. | 1.07 ch. |
| 9. | N. | 82°24' | E. | 1.25 ch. |
| 10. | S. | 34°03' | E. | 0.25 ch. |
| 11. | N. | 58°28' | E. | 0.25 ch. |
| 12. | N. | 61°04' | E. | 0.55 ch. |
| 13. | N. | 80°13' | E. | 0.63 ch. |
| 14. | N. | 74°42' | E. | 0.80 ch. |

At end of course, Creek, 3 lks. wide, 6 ins. deep, course N. 34° E.

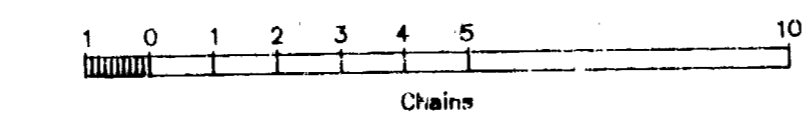
N.G.S. ASTRO AZ 1950*
LAT. 67° 49' 06.043" N.
LONG. 164° 31' 19.671" W.
NAD 27

FROM W.C.M.C.
N. 87°40' W. 64.50

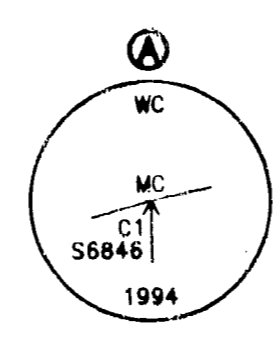
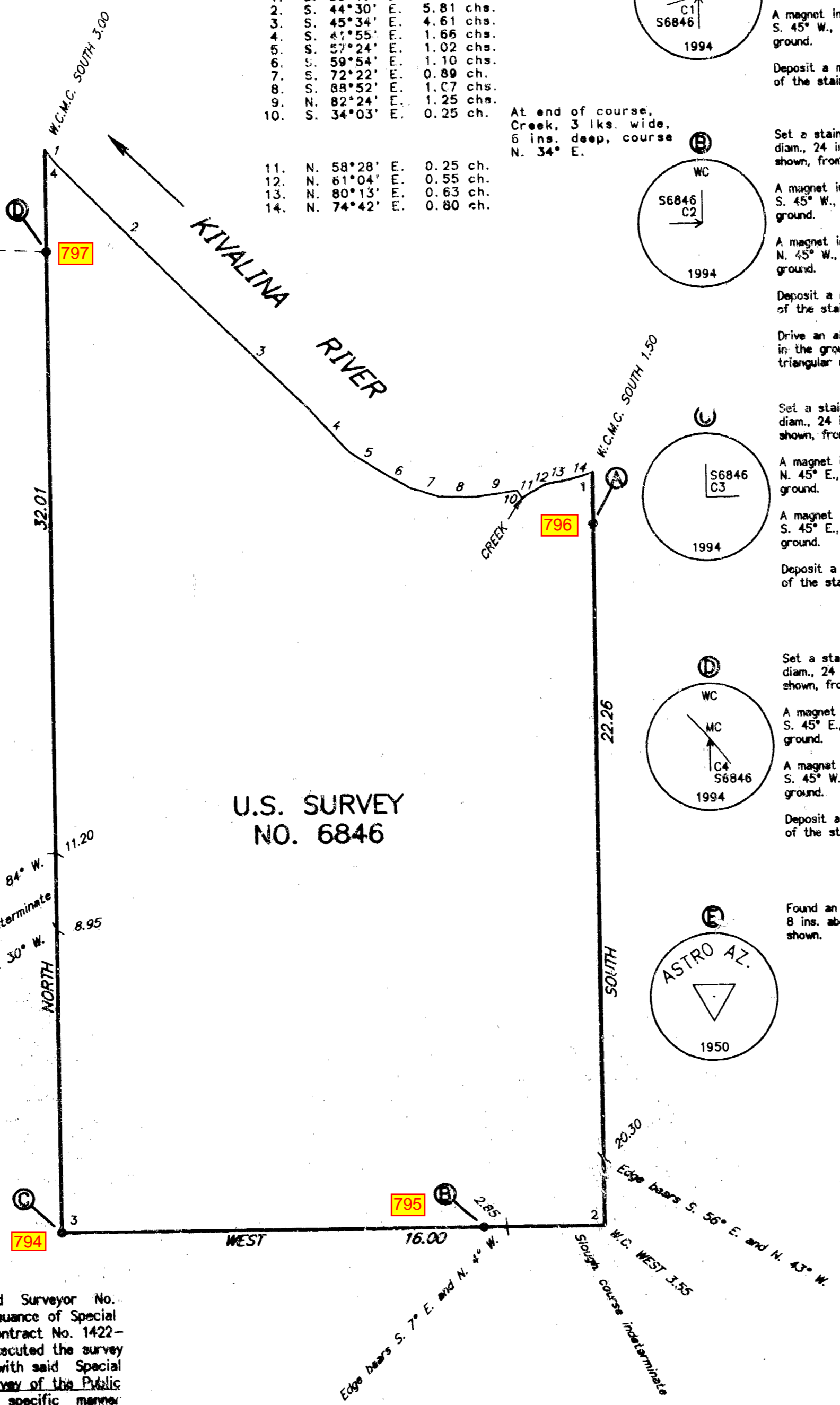


I, William W. McClintock, Registered Alaska Land Surveyor No. LS-5480, HEREBY CERTIFY upon honor that in pursuance of Special Instructions dated August 14, 1980, and under Contract No. 1422-N651-C4-3040 awarded May 31, 1994, I have executed the survey depicted on this plat in strict conformity with said Special Instructions, the Manual of Instructions for the Survey of the Public Lands of the United States, 1973, and in the specific manner described on this plat.

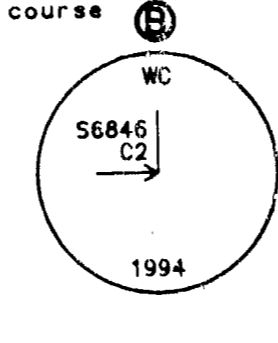
4-20-95 William W. McClintock
Date Registered Land Surveyor



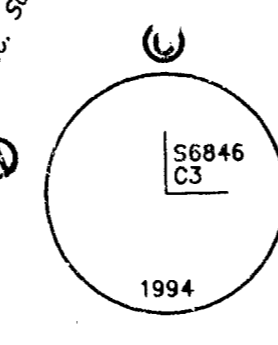
U.S. SURVEY NO. 6846



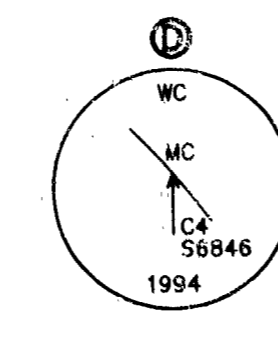
Set a stainless steel post, 28 ins. long, 2 1/2 ins. diam., 24 ins. in the ground, with brass cap mkd. as shown, from which
A magnet in a fluorescent pink plastic case, bears S. 45° E., 15 lks. dist., buried 24 ins. below the ground.
A magnet in a fluorescent blue plastic case, bears S. 45° W., 15 lks. dist., buried 24 ins. below the ground.
Deposit a magnet in a clear plastic case at the base of the stainless steel post.



Set a stainless steel post, 28 ins. long, 2 1/2 ins. diam., 24 ins. in the ground, with brass cap mkd. as shown, from which
A magnet in a fluorescent blue plastic case, bears S. 45° W., 15 lks. dist., buried 18 ins. below the ground.
A magnet in a fluorescent orange plastic case, bears N. 45° W., 15 lks. dist., buried 18 ins. below the ground.
Deposit a magnet in a clear plastic case at the base of the stainless steel post.
Drive an alum. rod, 9 ft. long, 3/4 in. diam., 7.5 ft. in the ground, SOUTH, 10 lks. dist., with an orange triangular marker on the top.



Set a stainless steel post, 28 ins. long, 2 1/2 ins. diam., 24 ins. in the ground, with brass cap mkd. as shown, from which
A magnet in a metallic silver plastic case, bears N. 45° E., 15 lks. dist., buried 18 ins. below the ground.
A magnet in a fluorescent pink plastic case, bears S. 45° E., 15 lks. dist., buried 18 ins. below the ground.
Deposit a magnet in a clear plastic case at the base of the stainless steel post.



Set a stainless steel post, 28 ins. long, 2 1/2 ins. diam., 24 ins. in the ground, with brass cap mkd. as shown, from which
A magnet in a fluorescent pink plastic case, bears S. 45° E., 15 lks. dist., buried 18 ins. below the ground.
A magnet in a fluorescent blue plastic case, bears S. 45° W., 15 lks. dist., buried 18 ins. below the ground.
Deposit a magnet in a clear plastic case at the base of the stainless steel post.



Found an iron pipe, 2 ins. diam., firmly set, projecting 8 ins. above the ground, with brass cap mkd. as shown.

U.S. SURVEY NO. 6846, ALASKA

This plat contains the entire survey record.
The exterior boundaries of Township 28 North, Range 26 West, Kasilof River Meridian, were surveyed in 1976, by George C. Schwadener for Schwadener and Budka under Contract No. YA-512-C16-208 and Special Instructions for Group No. 257, Alaska, dated February 4, 1976, the plat of which was accepted December 28, 1978.

This survey was executed by William W. McClintock, Registered Alaska Land Surveyor No. LS-5480 for Maniilaq Association, July 6, 1994 through July 14, 1994, in accordance with the specifications set forth in the Manual of Surveying Instructions, 1973, Special Instructions dated August 14, 1980, approved May 6, 1981, under Contract No. 1422-N651-C4-3040 awarded May 31, 1994, and Notice to Proceed dated June 9, 1994.

Field Assistants were:
Patrick J. Kelly, Party Chief
Andrew B. Alexander, Party Chief
Gene L. Snell, Instrument Person
Douglas W. Moore, Instrument Person
James W. Jackson, Survey Technician
Thomas A. Geffe, Survey Technician

Area: 39.99 Acres.
The azimuth was obtained from direct observations of the sun, using the hour angle method, and refers to the true meridian.

The geographic position of the witness corner to corner No. 4, a meander corner, as determined by a direct tie to N.G.S. triangulation station "ASTRO AZ 1950", is:
Latitude: 67° 49' 04.34" North (NAD 27)
Longitude: 164° 29' 28.95" West

The mean magnetic declination was taken from U.S. Geological Survey quadrangle map "MOATAK (D-5)," Alaska, 1955 edition.
This survey is located on the left bank of the Kivalina River, approximately 6 miles northeasterly of Kivalina, Alaska.
The land is level tundra vegetated with native grasses and berry bushes, with patches of dense willow brush.
Permafrost lies approximately 6 to 16 inches below the topsoil of organics and silt.
Access to the site is by boat in the summer and by snowmachine or dogteam in the winter.

Acceptance of this survey does not purport to transfer any interest in submerged lands to which the State of Alaska is entitled under the Equal Footing Doctrine and Section 6(m) of the Alaska Statehood Act, P.L. 85-502, notwithstanding the use, location, or absence of meander lines to depict water bodies.

UNITED STATES DEPARTMENT OF THE INTERIOR
BUREAU OF LAND MANAGEMENT
Anchorage, Alaska

The survey represented by this plat, having been correctly executed in accordance with the requirements of law and the regulations of this Bureau, is hereby accepted.

For the Director
James R. Pinkerton April 26, 1995
Deputy State Director for Cadastral Survey, Alaska

United States Department of the Interior

Bureau of Land Management
Alaska State Office
222 W. 7th Ave., No. 13
Anchorage, Alaska 99513-7599

SEP 12 1995

9640-925
USS No. 6846

MEMORANDUM

To: Chief, Branch of Spatial Records (AK 926)

From: DSD, Cadastral Survey (AK 920)

Subject: U.S. Survey No. 6846

This memorandum corrects the geographic position and tie for U.S. Survey No. 6846. Please send a copy of this memorandum to Micrographics for filming alongside the original plat. Follow the normal distribution procedures and attach a copy of this memorandum to the original plat.

NOTE: THE GEOGRAPHIC POSITION AND TIE SHOWN
IN THIS PLAT MEMORANDUM IS HERE BY CORRECTED
TO READ AS FOLLOWS:

FROM THE WCMC 4 OF US SURVEY NO. 6846

TO

ASTRO-AZ

N. 80° 14' 26" W., 106.69 CHS.
(FORWARD BEARING)

LATITUDE: 67° 48' 54.33" NORTH

NAD27

LONGITUDE: 164° 28' 19.02" WEST

/s/ George P. Oviatt

DEPUTY STATE DIRECTOR FOR CADASTRAL SURVEY, ALASKA

DATE: SEP 12 1995

cc: Records (925)

Survey File (925)

GCDB (926)

Title and Land Status (926)

925:R BIDASOLO:R :.ANN:9/12/95:x5608
S6846