

U.S. SURVEY NO. 6839, ALASKA

This plat contains the entire survey record.

The exterior boundaries and a portion of the subdivisional lines of Township 28 North, Range 25 West, Kateel River Meridian, were surveyed in 1976, by George C. Schwaderer for Schwaderer and Budka, under Contract No. YA-512-CT6-208 and Special Instructions for Group No. 257, Alaska, dated February 4, 1976, the plat of which was accepted December 28, 1978.

This survey was executed by William W. McClintock, Registered Alaska Land Surveyor No. LS-5480, for Maniilaq Association, June 26, 1994 through July 6, 1994, in accordance with the specifications set forth in the Manual of Surveying Instructions, 1973, Special Instructions dated August 13, 1980, approved May 13, 1981, under Contract No. 1422-N651-C4-3040 awarded May 31, 1994, and Notice to Proceed dated June 9, 1994.

Field Assistants were:

- Andrew B. Alexander, Party Chief
- Larry K. Bekkedahl, Party Chief
- Douglas W. Moore, Instrument Person
- Ronald C. Heidemann, Instrument Person
- Thomas A. Geffe, Survey Technician
- Wendell Booth, Jr., Survey Technician

Area: 79.96 Acres.

The azimuth was obtained from direct observations of the sun, using the hour angle method, and refers to the true meridian.

The geographic position of the witness corner to corner No. 4, a meander corner, as determined by a direct tie to the corner of sections 1, 6, 31 and 36, Townships 27 and 28 North, Ranges 25 and 26 West, Kateel River Meridian, Alaska, is:

Latitude: 67° 47' 33.68" North (NAD 27)

Longitude: 164° 21' 38.81" West

The mean magnetic declination was taken from U.S. Geological Survey quadrangle map "NOATAK (D-5)," Alaska, 1955 edition.

This survey is located on the right bank of the Wulik River, approximately 5 miles northeasterly of Kivalina, Alaska.

The land is level tundra vegetated with native grasses and berry bushes, with dense willow brush along the river bank.

Permafrost lies approximately 2 to 6 inches, where encountered, below the topsoil of organics and silt.

Access to the site is by jet boat in the summer and by snowmachine or dogteam in the winter.

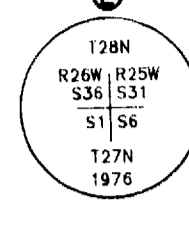
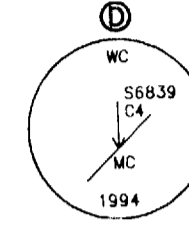
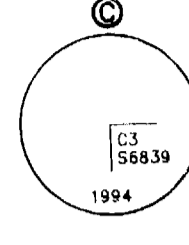
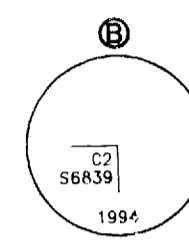
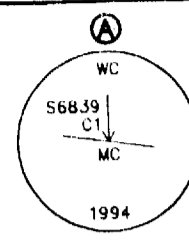
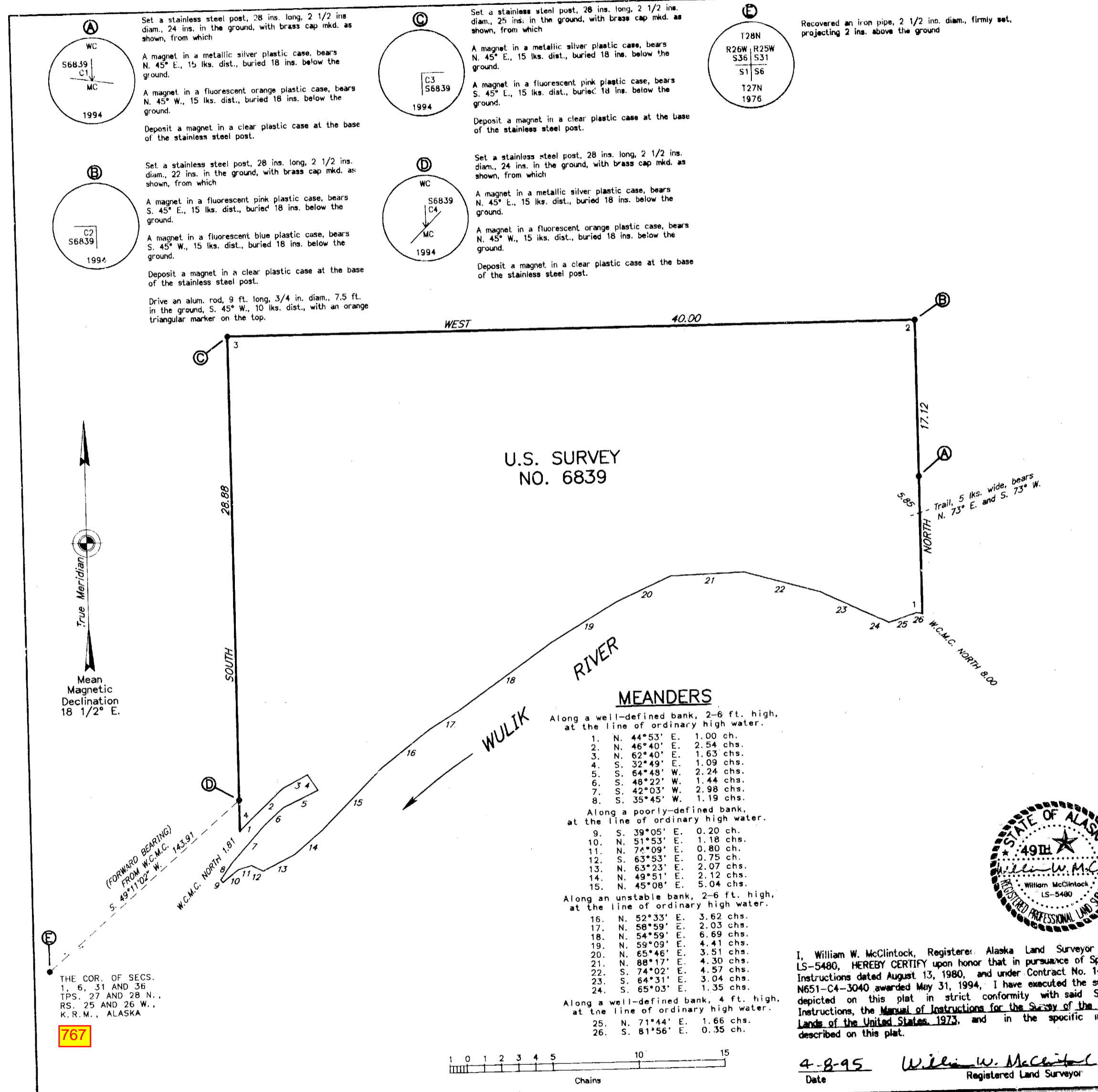
Acceptance of this survey does not purport to transfer any interest in submerged lands to which the State of Alaska is entitled under the Equal Footing Doctrine and Section 6(m) of the Alaska Statehood Act, P.L. 85-508, notwithstanding the use, location, or absence of meander lines to depict water bodies.

UNITED STATES DEPARTMENT OF THE INTERIOR BUREAU OF LAND MANAGEMENT Anchorage, Alaska

The survey represented by this plat, having been correctly executed in accordance with the requirements of law and the regulations of this Bureau, is hereby accepted.

For the Director

Henry J. Pinkuto Date April 26, 1995
Deputy State Director for Cadastral Survey, Alaska



MEANDERS

Along a well-defined bank, 2-6 ft. high, at the line of ordinary high water.

- N. 44°53' E. 1.00 chs.
- N. 46°40' E. 2.54 chs.
- N. 62°40' E. 1.63 chs.
- S. 32°49' E. 1.09 chs.
- S. 64°48' W. 2.24 chs.
- S. 48°22' W. 1.44 chs.
- S. 42°03' W. 2.98 chs.
- S. 35°45' W. 1.19 chs.

Along a poorly-defined bank, at the line of ordinary high water.

- S. 39°05' E. 0.20 chs.
- N. 51°53' E. 1.18 chs.
- N. 74°09' E. 0.80 chs.
- S. 63°53' E. 0.75 chs.
- N. 63°23' E. 2.07 chs.
- N. 49°51' E. 2.12 chs.
- N. 45°08' E. 5.04 chs.

Along an unstable bank, 2-6 ft. high, at the line of ordinary high water.

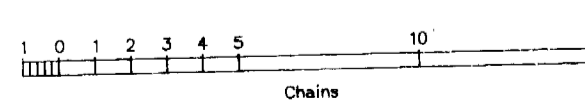
- N. 52°33' E. 3.62 chs.
- N. 58°59' E. 2.03 chs.
- N. 54°59' E. 6.69 chs.
- N. 59°09' E. 4.41 chs.
- N. 65°46' E. 3.51 chs.
- N. 88°17' E. 4.30 chs.
- S. 74°02' E. 4.57 chs.
- S. 64°31' E. 3.04 chs.
- S. 65°03' E. 1.35 chs.

Along a well-defined bank, 4 ft. high, at the line of ordinary high water.

- N. 71°44' E. 1.66 chs.
- S. 81°56' E. 0.35 chs.

THE COR. OF SECS. 1, 6, 31 AND 36 T.P.S. 27 AND 28 N., R.S. 25 AND 26 W., K.R.M., ALASKA

767



I, William W. McClintock, Register: Alaska Land Surveyor No. LS-5480, HEREBY CERTIFY upon honor that in pursuance of Special Instructions dated August 13, 1980, and under Contract No. 1422-N651-C4-3040 awarded May 31, 1994, I have executed the survey depicted on this plat in strict conformity with said Special Instructions, the Manual of Instructions for the Survey of the Public Lands of the United States, 1973, and in the specific manner described on this plat.

4-8-95 *William W. McClintock*
Date Registered Land Surveyor

