

U.S. SURVEY NO. 6820, ALASKA

This plat contains the entire survey record.

The exterior boundaries of fractional Township 27 North, Range 26 West, Kateel River Meridian, were surveyed in 1976, by George C. Schwaderer for Schwaderer and Budka under Contract No. YA-512-CT6-208 and Special Instructions for Group No. 257, Alaska, dated February 4, 1976, the plat of which was accepted December 26, 1976.

This survey was executed by William W. McClintock, Registered Alaska Land Surveyor No. LS-5480, for Manilq Association, June 25, 1994 through July 3, 1994, in accordance with the specifications set forth in the Manual of Surveying Instructions, 1973, Special Instructions dated July 31, 1980, approved May 4, 1981, under Contract No. 1422-N651-C4-3040 awarded May 31, 1994, and Notice to Proceed dated June 9, 1994.

Field Assistants were:

- Andrew B. Alexander, Party Chief
- Larry K. Bekkedahl, Party Chief
- Douglas W. Moore, Instrument Person
- Ronald C. Heidemann, Instrument Person
- Thomas A. Geffe, Survey Technician
- Wendell Booth, Jr., Survey Technician

Area: 159.97 Acres.

The azimuth was obtained from direct observations of the sun, using the hour angle method, and refers to the true meridian.

The geographic position of the witness corner to corner No. 4, a meander corner, as determined by a direct tie to the corner of sections 1, 6, 31 and 36, Townships 27 and 28 North, Ranges 25 and 26 West, Kateel River Meridian, Alaska, is:

Latitude: 67° 45' 17.65" North (NAD 27)
 Longitude: 164° 29' 54.22" West

The mean magnetic declination was taken from U.S. Geological Survey quadrangle map "NOATAK D-5," Alaska, 1955 edition. This survey is located on the right bank of an unnamed slough, approximately 2 miles northeasterly of Kivalina, Alaska.

The land is level wet tundra vegetated with native grasses and low willow brush.

Permafrost lies approximately 3 to 6 inches below the topsoil of organics and silt.

Access to the site is by boat in the summer and by snowmachine or dogteam in the winter.

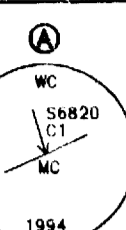
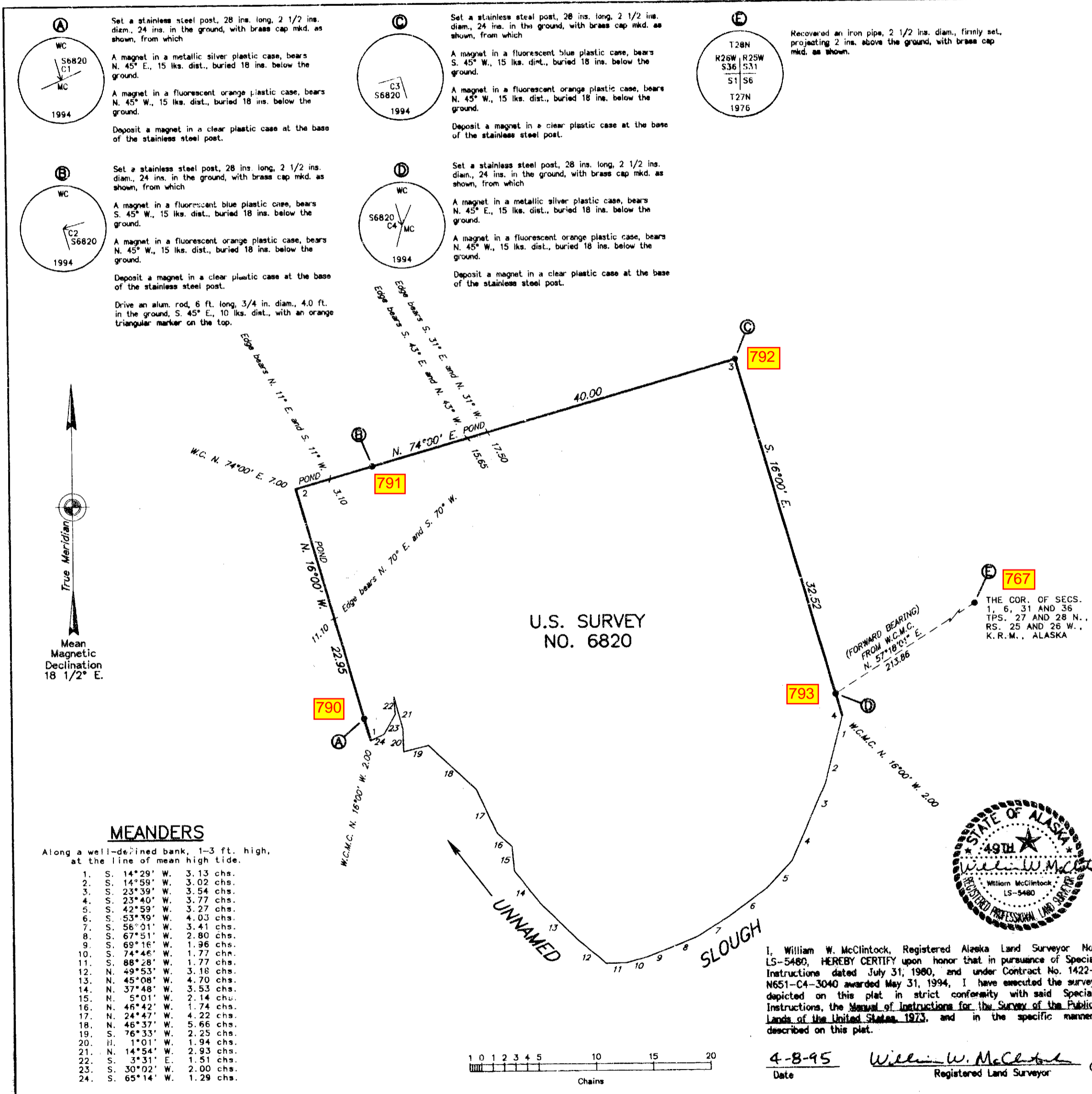
Acceptance of this survey does not purport to transfer any interest in submerged lands to which the State of Alaska is entitled under the Equal Footing Doctrine and Section 6(m) of the Alaska Statehood Act, P.L. 85-508, notwithstanding the use, location, or absence of meander lines to depict water bodies.

UNITED STATES DEPARTMENT OF THE INTERIOR
BUREAU OF LAND MANAGEMENT
Anchorage, Alaska

The survey represented by this plat, having been correctly executed in accordance with the requirements of law and the regulations of this Bureau, is hereby accepted.

For the Director

William W. McClintock
 Date 4-8-95 Registered Land Surveyor
Jerry P. Pinkerton April 26, 1995
 Deputy State Director for Cadastral Survey, Alaska



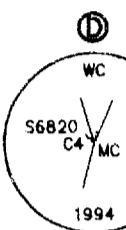
A
 Set a stainless steel post, 28 ins. long, 2 1/2 ins. diam., 24 ins. in the ground, with brass cap mkd. as shown, from which
 A magnet in a metallic silver plastic case, bears N. 45° E., 15 lbs. dist., buried 18 ins. below the ground.
 A magnet in a fluorescent orange plastic case, bears N. 45° W., 15 lbs. dist., buried 18 ins. below the ground.
 Deposit a magnet in a clear plastic case at the base of the stainless steel post.



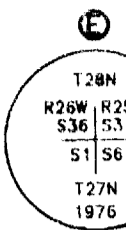
B
 Set a stainless steel post, 28 ins. long, 2 1/2 ins. diam., 24 ins. in the ground, with brass cap mkd. as shown, from which
 A magnet in a fluorescent blue plastic case, bears S. 45° W., 15 lbs. dist., buried 18 ins. below the ground.
 A magnet in a fluorescent orange plastic case, bears N. 45° W., 15 lbs. dist., buried 18 ins. below the ground.
 Deposit a magnet in a clear plastic case at the base of the stainless steel post.



C
 Set a stainless steel post, 28 ins. long, 2 1/2 ins. diam., 24 ins. in the ground, with brass cap mkd. as shown, from which
 A magnet in a fluorescent blue plastic case, bears S. 45° W., 15 lbs. dist., buried 18 ins. below the ground.
 A magnet in a fluorescent orange plastic case, bears N. 45° W., 15 lbs. dist., buried 18 ins. below the ground.
 Deposit a magnet in a clear plastic case at the base of the stainless steel post.



D
 Set a stainless steel post, 28 ins. long, 2 1/2 ins. diam., 24 ins. in the ground, with brass cap mkd. as shown, from which
 A magnet in a metallic silver plastic case, bears N. 45° E., 15 lbs. dist., buried 18 ins. below the ground.
 A magnet in a fluorescent orange plastic case, bears N. 45° W., 15 lbs. dist., buried 18 ins. below the ground.
 Deposit a magnet in a clear plastic case at the base of the stainless steel post.



E
 Recovered an iron pipe, 2 1/2 ins. diam., firmly set, projecting 2 ins. above the ground, with brass cap mkd. as shown.



I, William W. McClintock, Registered Alaska Land Surveyor No. LS-5480, HEREBY CERTIFY upon honor that in pursuance of Special Instructions dated July 31, 1980, and under Contract No. 1422-N651-C4-3040 awarded May 31, 1994, I have executed the survey depicted on this plat in strict conformity with said Special Instructions, the Manual of Instructions for the Survey of the Public Lands of the United States, 1973, and in the specific manner described on this plat.