

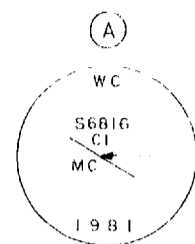
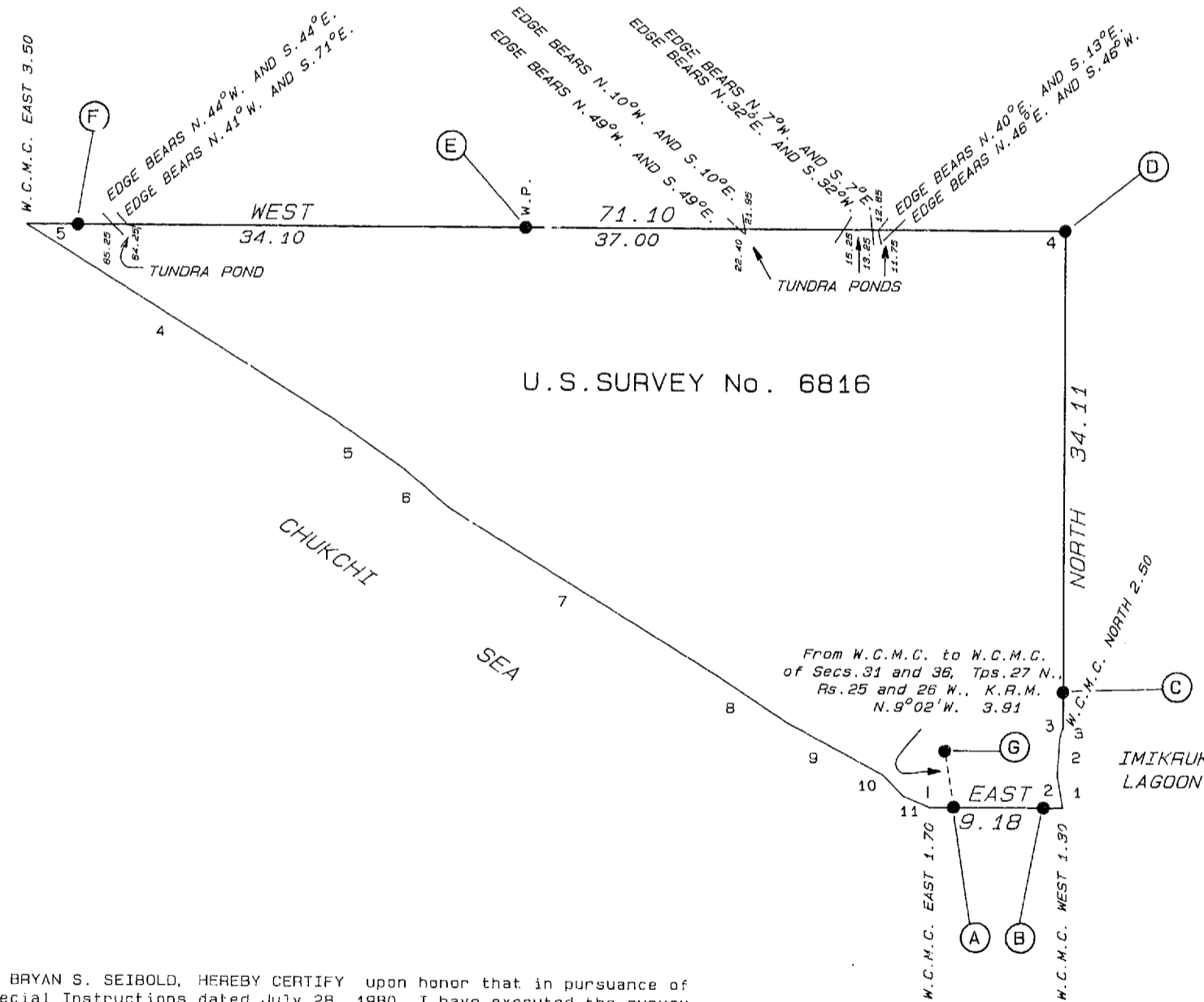
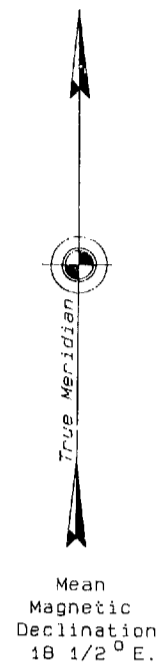
MEANDERS

Of Imikruk Lagoon, along a well defined shoreline, at the line of mean high tide.

- 1. N. 9°57'W., 2.18 Chs.
- 2. N. 4°12'E., 2.68 Chs.
- 3. N. 16°07'E., 0.65 Ch.

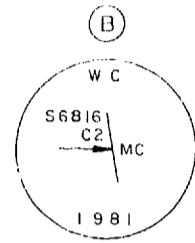
Of Chukchi Sea, along a well defined shoreline, at the line of mean high tide.

- 4. S. 97°46'E., 24.94 Chs.
- 5. S. 55°01'E., 5.74 Chs.
- 6. S. 49°42'E., 4.28 Chs.
- 7. S. 58°28'E., 21.55 Chs.
- 8. S. 56°18'E., 5.68 Chs.
- 9. S. 61°35'E., 7.55 Chs.
- 10. S. 44°23'E., 2.01 Chs.
- 11. S. 66°41'E., 1.88 Chs.



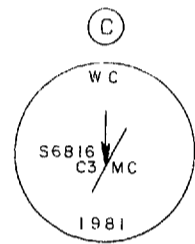
Drive an alum. rod, 72 ins. long, 3/4 in. diam., 64 ins. in the ground, with alum. cap mkd. as shown, from which

Drive an alum. rod, 72 ins. long, 3/4 in. diam., 62 ins. in the ground, with an orange triangle on top, Fast, 10 lks. dist.



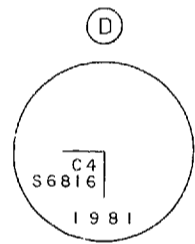
Drive an alum. rod, 64 ins. long, 3/4 in. diam., 54 ins. in the ground, with alum. cap mkd. as shown

No accessories available.



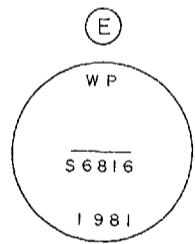
Drive an alum. rod, 64 ins. long, 3/4 in. diam., 54 ins. in the ground, with alum. cap mkd. as shown

No accessories available.



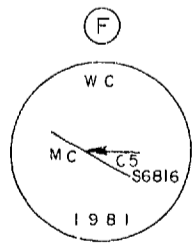
Drive an alum. rod, 72 ins. long, 3/4 in. diam., 66 ins. in the ground, with alum. cap mkd. as shown

No accessories available.



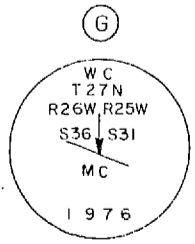
Drive an alum. rod, 72 ins. long, 3/4 in. diam., 66 ins. in the ground, with alum. cap mkd. as shown

No accessories available.



Drive an alum. rod, 108 ins. long, 3/4 in. diam., 100 ins. in the ground, with alum. cap mkd. as shown

No accessories available.



Found a copper coated steel rod, 5/8 in. diam., firmly set, projecting 12 ins. above the ground, with brass cap mkd. as shown

No accessories available.

U.S. SURVEY No. 6816, ALASKA

This plat contains the entire survey record.

The exterior boundaries and a portion of subdivisional lines of Township 27 North, Range 25 West, Kateel River Meridian, were surveyed in 1976 by George E. Schwadener for Schwadener and Bodke.

This survey was executed by Bryan S. Seibold, Cadastral Surveyor, July 30 through August 5, 1981, in accordance with the specifications set forth in the Manual of Surveying Instructions, 1973, Special Instructions dated July 28, 1980, approved June 10, 1981, and Assignment Instructions dated June 12, 1981.

Field assistants were:

- Steven G. Schey, Cadastral Surveyor
- Steven L. Ioth, Land Surveyor Trainee
- Lawrence J. Morgan, Survey Aid

Area: 159.98 Acres.

The azimuth was obtained from a direct observation of the sun and refers to the true meridian.

The geographic position of the witness corner to corner No. 1, which is a meander corner, as determined from a tie to the witness corner to the meander corner of sections 31 and 36, Township 27 North, Ranges 25 and 26 West, is:

Latitude: 67°41'41.99" North

Longitude: 164°24'44.54" West

The magnetic declination was taken from U.S. Geological Survey quadrangle map "NOATAK (C-5)," Alaska, 1952 edition, with minor revisions in 1973.

This survey is situated approximately 3 1/2 miles southeasterly of Kivalina, Alaska, near the northerly extent of Imikruk Lagoon.

The land is level. Vegetation consists of mostly tundra moss with a few spots of short willow brush.

The soil is sandy silt, underlain with permafrost.

UNITED STATES DEPARTMENT OF THE INTERIOR
BUREAU OF LAND MANAGEMENT
Anchorage, Alaska June 3, 1982

The survey represented by this plat, having been correctly executed in accordance with the requirements of law and the regulations of this Bureau, is hereby accepted.

For the Director

Francis R. Litchbush

Chief, Division of Cadastral Survey, Alaska

I, BRYAN S. SEIBOLD, HEREBY CERTIFY upon honor that in pursuance of Special Instructions dated July 28, 1980, I have executed the survey depicted on this plat in strict conformity with said Special Instructions, the Manual of Instructions for the Survey of the Public Lands of the United States, 1973, and in the manner described on this plat.

June 1, 1982 Date
Bryan S. Seibold
Cadastral Surveyor

