

# U.S. SURVEY NO.3776, ALASKA

SITUATED  
ON A SAND SPIT BETWEEN  
THE CHUKCHI SEA AND CORWIN LAGOON  
APPROXIMATELY  
 $\frac{1}{4}$  MILE NW OF THE VILLAGE OF KIVALINA, ALASKA

APPROXIMATE GEOGRAPHIC POSITION  
LATITUDE  $67^{\circ}43\frac{1}{2}'$  N LONGITUDE  $164^{\circ}31\frac{1}{4}'$  W

AREA: 38.06 ACRES

SURVEYED BY  
RAY HARPIN, CADASTRAL SURVEYOR

AUGUST 29 to 30, 1960

UNDER SPECIAL INSTRUCTIONS

DATED MAY 27, 1960

AND

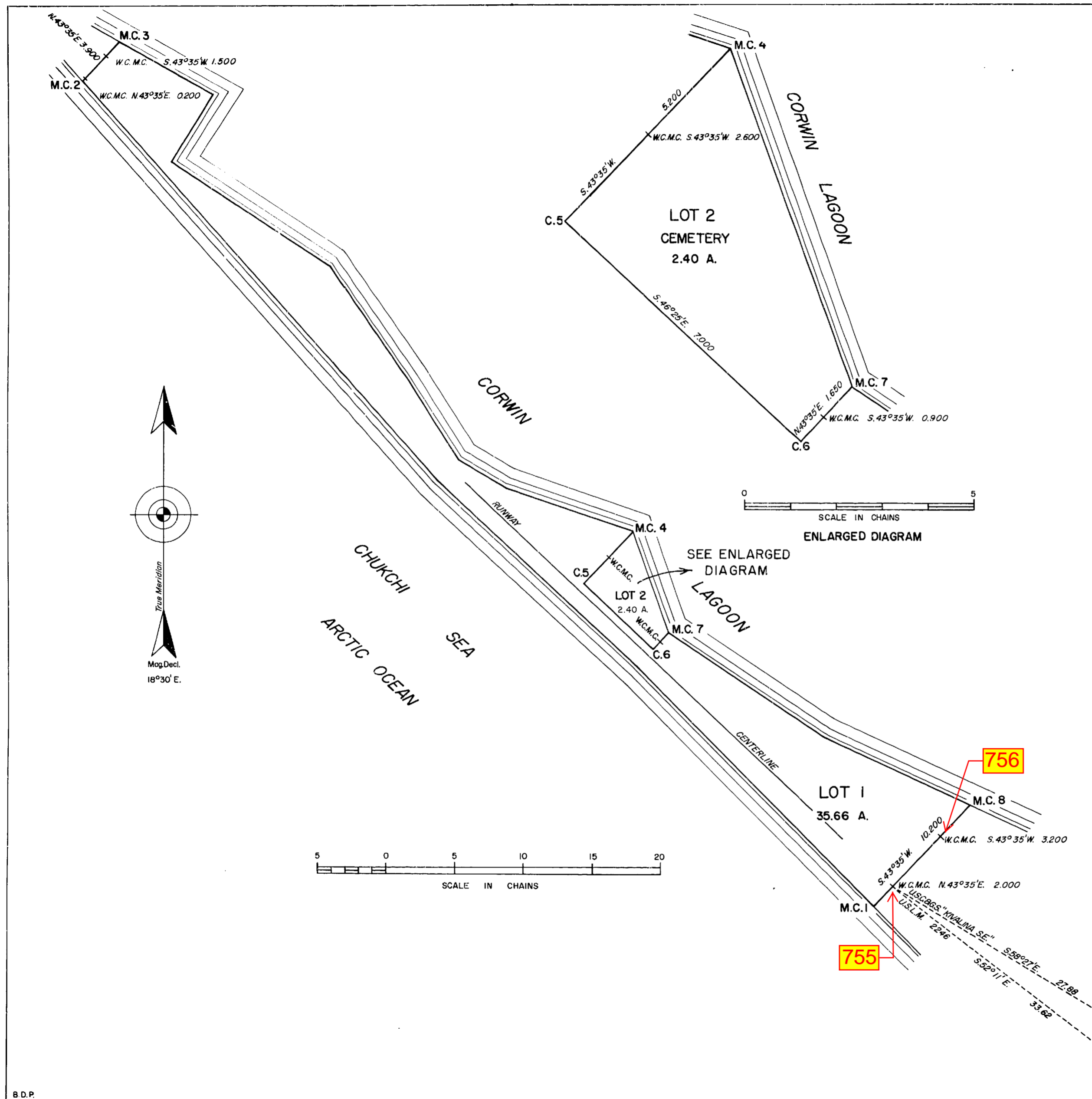
APPROVED JUNE 10, 1960

UNITED STATES DEPARTMENT OF THE INTERIOR  
BUREAU OF LAND MANAGEMENT  
Washington, D.C. October 10, 1961

This plat is strictly conformable to the approved field notes, and the survey, having been correctly executed in accordance with the requirements of law and the regulations of this Bureau, is hereby accepted.

For the Director

*Ed Livingston*  
Chief, Division of Engineering



ORIGINAL

257

UNITED STATES  
DEPARTMENT OF THE INTERIOR  
BUREAU OF LAND MANAGEMENT

BUREAU OF LAND MANAGEMENT  
NOV 6 1961

ORIGINAL  
FIELD NOTES

CADASTRAL SURVEY OFFICE  
Anchorage, Alaska

OF

U. S. SURVEY NO. 3776

SITUATED

ON A SAND SPIT BETWEEN THE CHUKCHI SEA AND CORWIN LAGOON

APPROXIMATELY 1/2 MILE NW OF THE VILLAGE OF KIVALINA, ALASKA

IN APPROXIMATE

LATITUDE 67°43' NORTH---LONGITUDE 164°31' WEST

Of the Meridian,

In the State of ALASKA

EXECUTED BY

RAY HARPIN, CADASTRAL SURVEYOR

Under special instructions dated MAY 27, 1960, which provided  
U. S. SURVEY  
for the surveys included under Survey No. 3776, approved JUNE 10, 1960  
and assignment instructions dated AUGUST 22, 1960

Survey commenced AUGUST 29, 1960

Survey completed AUGUST 30, 1960

## U. S. SURVEY NO. 3776

Chains

The survey was executed with a W. and L. E. Gurley transit No. 591576, constructed in accordance with the standard instrumental specifications of the Bureau of Land Management. Prior to the beginning of the survey the transit was tested and found in proper adjustment.

The measurement was made with a Lufkin steel tape 5 chains in length, graduated every 1/10 link for the first link, every link for the next 99 links, and every 10 links thereafter. The tape was tested by comparison with a Standard and found correct. The measurements were made on the slope to the nearest 1/10 of a link and the vertical angle of each interval was ascertained by a transit or a clinometer in good adjustment. The horizontal equivalents only are entered in this field note record.

The azimuth of all lines was determined by deflection angle from a true meridian obtained by AM and PM observations of the sun.

The Magnetic Declination at corner No. 1 is  $18\frac{1}{2}^{\circ}$  East.

## MEANDERS OF THE CHUKCHI SEA

Begin at cor. No. 1, the most southerly cor. of this survey on the meanders of the mean high tide of the Chukchi Sea. Impracticable to monument due to liability of destruction by ice and high water.

Thence with the meanders of the mean high tide of the Chukchi Sea, along a well defined bank.

N.44°26'W., 24.517 chs.

N.46°51'W., 19.747 chs.

N.41°36'W., 39.228 chs. At end of course.

Point for meander cor. No. 2 on the meanders of the mean high tide of the Chukchi Sea. Impracticable to monument due to liability of destruction by ice and high water.

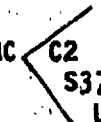
N.43°35'E.

On line 2-3 over nearly level grass land and tundra.

0.200

Point for witness meander cor. No. 2.

Set an iron post, 30 ins. long,  $2\frac{1}{2}$  ins. diam., 24 ins. in the ground, with brass cap mkd.

WCMC 

1960

dig pits, 18x18x12 ins., on line each side of post, 3 ft. dist.

2.400

No other cor. accessories available within limits.

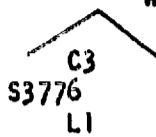
Point for witness cor. meander cor. No. 3.

Set an iron post, 30 ins. long,  $2\frac{1}{2}$  ins. diam., 24 ins. in the ground, with brass cap mkd.

U. S. SURVEY NO. 3776

Chain

WCMC



1960

dig pits, 18x18x12 ins., on line each side of post, 3 ft. dist.

No other accessories available within limits.

3.900

Point for meander cor. No. 3, on the S.E. shore Corwin Lagoon. Impracticable to monument due to liability of destruction by ice and high water.

MEANDERS OF CORWIN LAGOON

From meander cor. No. 3 heretofore described.

Thence with the meanders of Corwin Lagoon along a sandy beach.

S.60°28'E., 7.734 chs.

S.32°33'W., 5.700 chs.

S.56°18'E., 14.099 chs.

S.34°34'E., 10.219 chs.

S.32°23'E., 6.803 chs.

S.59°15'E., 4.049 chs.

S.70°55'E., 9.670 chs. At end of course.

Point for meander cor. No. 4, on the meander of Corwin Lagoon, impracticable to monument due to liability of destruction by ice and high water.

Cor. No. 7 of this survey, hereinafter described, bears S.19°32'E. 7.849 chs. dist., with the meander of Corwin Lagoon to embrace a portion of Lot 2 of this survey.

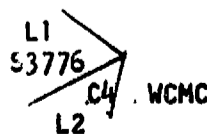
S.43°35'W.

On line 4-5 over nearly level grass land and tundra, between Lots 1 and 2.

2.600

Point for witness meander cor. No. 4.

Set an iron post, 30 ins. long, 2½ ins. diam., 2¼ ins. in the ground, with brass cap mkd.



1960

dig pits, 18x18x12 ins., on line each side of post, 3 ft. dist.

Wind sock, on concrete base, bears S.46°27'E.

-3-

## U. S. SURVEY NO. 3776

Chains  
5.200

Point for cor. No. 5.

Set an iron post, 30 ins. long,  $2\frac{1}{2}$  ins. diam., 28 ins. in the ground, with brass cap mkd.

S3776  
C5  
L1

1960

from which

A bell on a church bears  $S.45^{\circ}44'E.$ A wind sock, on concrete base, bears  $S.51^{\circ}33'E.$  $S.46^{\circ}25'E.$ 

On line 5-6, over nearly level edge of airstrip, between lots 1 and 2, parallel with the center line of a steel mat which bears westerly 56 lks. dist.

7.000

Point for cor. No. 6.

Set an iron post, 30 ins. long,  $2\frac{1}{2}$  ins. diam., 28 ins. in the ground, with brass cap mkd.

L1 L2  
C6

S3776

1960

from which

A bell in front of a mission bears  $S.45^{\circ}38'E.$ A wind sock, on concrete base, bears  $S.53^{\circ}12'E.$  $N.43^{\circ}35'E.$ 

On line 6-7 over nearly level grass land and tundra, between Lots 1 and 2.

0.750

Point for witness meander cor. No. 7.

Set an iron post, 30 ins. long,  $2\frac{1}{2}$  ins. diam., 26 ins. in the ground, with brass cap mkd.

L2  
WCMC  
C7  
L1

S3776

1960

from which

A bell in front of a mission bears  $S.44^{\circ}35'E.$ A wind sock, on concrete base, bears  $S.51^{\circ}16'E.$

## U. S. SURVEY NO. 3776

Chains  
1.650

Point for meander cor. No. 7 on the SW shore of Corwin Lagoon. Impracticable to monument due to liability of destruction by ice and high water.

## CONTINUE MEANDERS OF CORWIN LAGOON

From meander cor. No. 7 heretofore described.

Thence with the meanders of Corwin Lagoon along a sandy beach.

S.55°03'E., 13.691 chs.

S.65°01'E., 11.605 chs. At end of course.

Point for meander cor. No. 8. Impracticable to monument due to liability of destruction by ice and high water.

S.43°35'W.

On line 8-1 over nearly level grass land and tundra.

3 200

Point for witness meander cor. No. 8.

Set an iron post, 30 ins. long, 2½ ins. diam., 26 ins. in the ground, with brass cap mkd.

L1  
S3776  
C8

1960

from which

The center of a concrete base of a wind sock bears N.84°15'W., 2.965 chs. dist.

8.200

Point for witness cor. meander cor. No. 1 on the projection of the center line of an airstrip 80x2500 ft. Southerly end bears N.46°25'W., 5.00 chs. dist.

Set an iron post, 30 ins. long, 2½ ins. diam., 26 ins. in the ground, with brass cap mkd.

L1  
S3776  
C1

1960

From which

The center of a bell in front of a mission bears S.46°23'E.

A wind sock on a concrete base bears N.7°13'E.

US Coast and Geodetic Survey Triangulation Sta. Kivalina SE. bears S.58°27'E., 27.88 chs. dist.

US Location Monument 2246 bears S.52°11'E., 33.62 chs.

10.200 Meander cor. No. 1 Place of Beginning, containing 38.06 acres.

U. S. SURVEY NO. 3776

Chains

ACREAGE OF LOTS 1 AND 2

Lot 1 contains 35.66 acres.

Lot 2 contains 2.40 acres.

From meander cor. No. 1 the shore of the Chukchi Sea bears:

S.44°26'E., 5.00 chs.

From meander cor. No. 2 the shore of the Chukchi Sea bears:

N.41°36'W., 5.00 chs.

From meander cor. No. 3 the shore of Corwin Lagoon bears:

N.60°28'W., 5.00 chs.

From meander cor. No. 8 the shore of Corwin Lagoon bears:

S.65°01'E., 5.00 chs.

GENERAL DESCRIPTION

This survey is situated on a sand spit between the Chukchi Sea and Corwin Lagoon approximately ¼ mile NW of the village of Kivalina, Alaska.

The soil is of sandy loam and tundra, covered with native grass. No trees in this vicinity.

Lot 2 consists of a Native Cemetery.





