

21314

U.S. SURVEY NO. 11312, ALASKA

This plat contains the entire survey record.

The survey of a portion of the subdivisional lines of Township 28 North, Range 25 West, Kateel River Meridian, were surveyed in 1976. The Seventh Standard Parallel North of Townships 29 North, Ranges 24 and 25 West, Kateel River Meridian, were surveyed in 1976. The Sixth Guide Meridian West of Township 28 North, Range 24 West, Kateel River Meridian, was surveyed in 1976. The North boundary of Township 27 North, Range 25 West, Kateel River Meridian, was surveyed in 1976.

U.S. Survey No. 6843 was surveyed concurrently by William W. McClintock, Registered Alaska Land Surveyor No. LS-5480, for Maniilaq Association, under Special Instructions dated August 14, 1980, approved May 4, 1981.

This survey was executed by William W. McClintock, Registered Alaska Land Surveyor No. LS-5480, for Maniilaq Association, Alaska, June 24, 1994 through July 1, 1994, in accordance with the specifications set forth in the Manual of Surveying Instructions, 1973, Special Instructions dated October 21, 1993, approved December 14, 1993, under Contract No. 1422-N651-C4-3040 awarded May 31, 1994, and Notice to Proceed dated June 9, 1994.

Field Assistants were:

Andrew B. Alexander, Party Chief
Douglas W. Moore, Instrument Person
Thomas A. Geffe, Survey Technician

Area: 79.98 Acres.

The azimuth was obtained from direct observations of the sun, using the hour angle method, and refers to the true meridian.

The geographic position of corner No. 4, as determined by a direct tie to the corner of sections 1, 6, 31 and 36, Townships 27 and 28 North, Ranges 25 and 26 West, Kateel River Meridian, Alaska, is:

Latitude: 67° 46' 56.65" North (NAD 27)
Longitude: 164° 24' 03.87" West

The mean magnetic declination was taken from U.S. Geological Survey quadrangle map "NOATAK (D-5)," Alaska, 1955 edition.

This survey is located on the right bank of the Wulik River, approximately 5 1/2 miles northeasterly of Kivalina, Alaska.

The land is level ground vegetated with native grasses and berry bushes, with patches of dense willow brush.

Permafrost lies approximately 3 to 12 inches below the topsoil of organics and silt.

Access to the site is by boat in the summer and by snowmachine or dogteam in the winter.

Acceptance of this survey does not purport to transfer any interest in submerged lands to which the State of Alaska is entitled under the Equal Footing Doctrine and Section 6(m) of the Alaska Statehood Act, P.L. 85-508, notwithstanding the use, location, or absence of meander lines to depict water bodies.

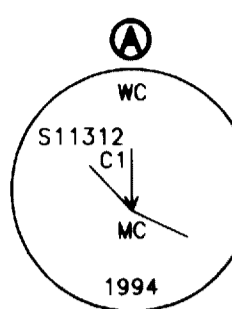
UNITED STATES DEPARTMENT OF THE INTERIOR
BUREAU OF LAND MANAGEMENT
Anchorage, Alaska

The survey represented by this plat, having been correctly executed in accordance with the requirements of law and the regulations of this Bureau, is hereby accepted.

For the Director

Deputy State Director for Cadastral Survey, Alaska
Date April 26, 1995

Plot Sheet K4-12
NOATAK D-5
T 27+28N, R 25+26W, KRM.

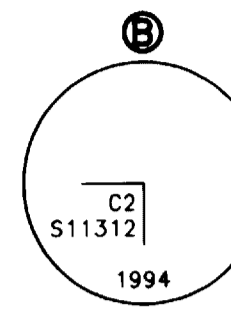


Set a stainless steel post, 28 ins. long, 2 1/2 ins. diam., 25 ins. in the ground, with brass cap mkd. as shown, from which

A magnet in a metallic silver plastic case, bears N. 45° E., 15 lks. dist., buried 18 ins. below the ground.

A magnet in a fluorescent orange plastic case, bears N. 45° W., 15 lks. dist., buried 21 ins. below the ground.

Deposit a magnet in a clear plastic case at the base of the stainless steel post.



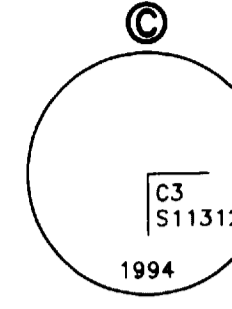
Set a stainless steel post, 28 ins. long, 2 1/2 ins. diam., 26 ins. in the ground, with brass cap mkd. as shown, from which

A magnet in a fluorescent blue plastic case, bears S. 45° W., 15 lks. dist., buried 18 ins. below the ground.

A magnet in a fluorescent orange plastic case, bears N. 45° W., 15 lks. dist., buried 19 ins. below the ground.

Deposit a magnet in a clear plastic case at the base of the stainless steel post.

Drive an alum. rod, 9 ft. long, 3/4 in. diam., 7.5 ft. in the ground, WEST, 15 lks. dist., with an orange triangular marker on the top.

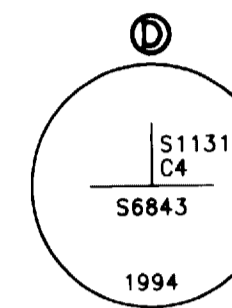


Set a stainless steel post, 28 ins. long, 2 1/2 ins. diam., 26 ins. in the ground, with brass cap mkd. as shown, from which

A magnet in a fluorescent pink plastic case, bears S. 45° E., 15 lks. dist., buried 18 ins. below the ground.

A magnet in a fluorescent blue plastic case, bears S. 45° W., 15 lks. dist., buried 18 ins. below the ground.

Deposit a magnet in a clear plastic case at the base of the stainless steel post.

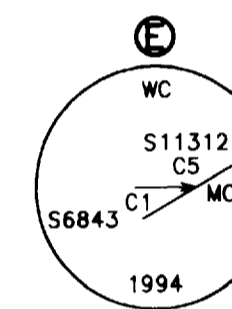


Set a stainless steel post, 28 ins. long, 2 1/2 ins. diam., 27 ins. in the ground, with brass cap mkd. as shown, from which

A magnet in a fluorescent blue plastic case, bears S. 45° W., 15 lks. dist., buried 20 ins. below the ground.

A magnet in a fluorescent orange plastic case, bears N. 45° W., 15 lks. dist., buried 18 ins. below the ground.

Deposit a magnet in a clear plastic case at the base of the stainless steel post.

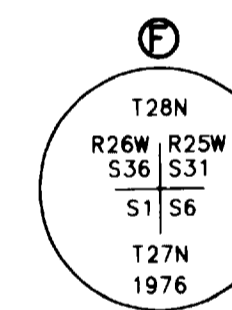


Set a stainless steel post, 28 ins. long, 2 1/2 ins. diam., 25 ins. in the ground, with brass cap mkd. as shown, from which

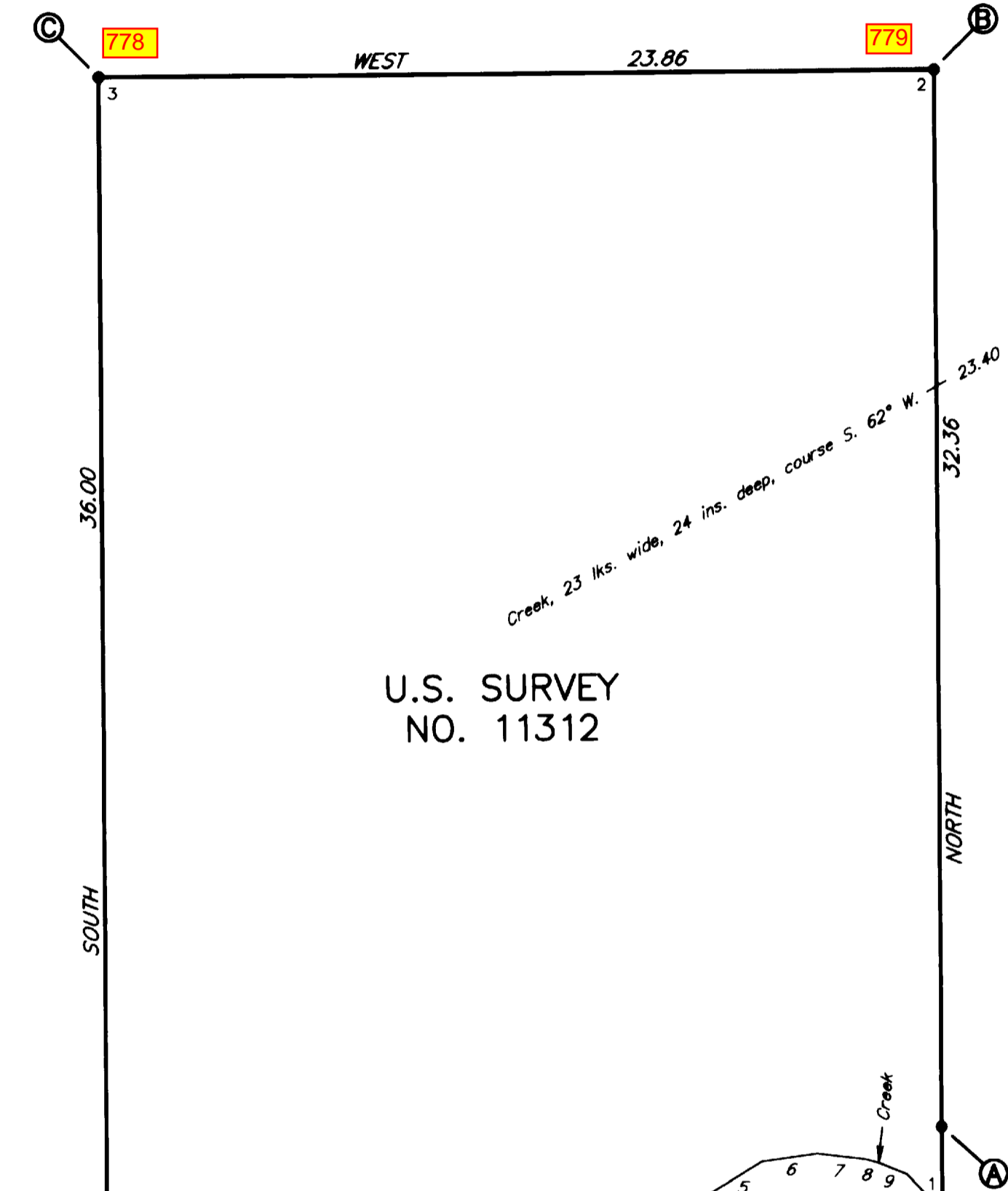
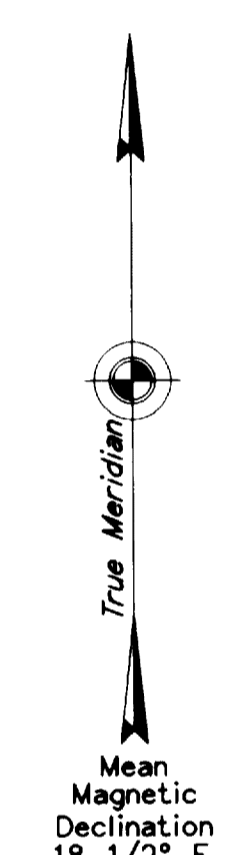
A magnet in a fluorescent blue plastic case, bears S. 45° W., 15 lks. dist., buried 18 ins. below the ground.

A magnet in a fluorescent orange plastic case, bears N. 45° W., 15 lks. dist., buried 18 ins. below the ground.

Deposit a magnet in a clear plastic case at the base of the stainless steel post.



Recovered an iron pipe, 2 1/2 ins. diam., firmly set, projecting 2 ins. above the ground, with brass cap mkd. as shown.



U.S. SURVEY NO. 11312

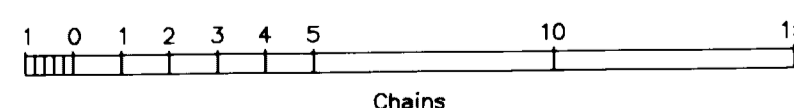
U.S. SURVEY NO. 6843

MEANDERS

Along an unstable bank, 4-6 ft. high, at the line of ordinary high water.

- N. 60°25' E. 0.43 chs.
- N. 72°30' E. 4.66 chs.
- N. 81°15' E. 4.20 chs.
- N. 66°54' E. 4.84 chs.
- N. 58°42' E. 1.84 chs.
- N. 82°48' E. 1.60 chs.
- S. 83°13' E. 1.39 chs.
- S. 74°51' E. 0.40 chs.
- S. 67°40' E. 0.86 chs.
- S. 43°12' E. 1.47 chs.

At end of course, Creek, 7 lks. wide, 42 ins. deep, course S. 8° E.



I, William W. McClintock, Registered Alaska Land Surveyor No. LS-5480, HEREBY CERTIFY upon honor that in pursuance of Special Instructions dated October 21, 1993, and under Contract No. 1422-N651-C4-3040 awarded May 31, 1994, I have executed the survey depicted on this plat in strict conformity with said Special Instructions, the Manual of Instructions for the Survey of the Public Lands of the United States, 1973, and in the specific manner described on this plat.

4-8-95
Date

William McClintock
Registered Land Surveyor



THE COR. OF SECS. 1, 6, 31 AND 36 T.P.S. 27 AND 28 N., R.S. 25 AND 26 W., K.R.M., ALASKA

767

JAM