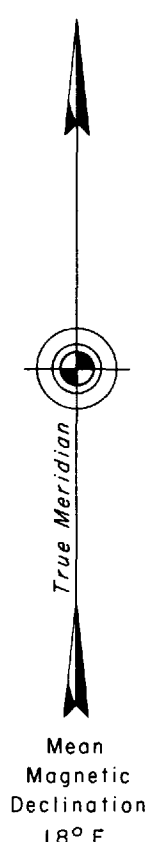
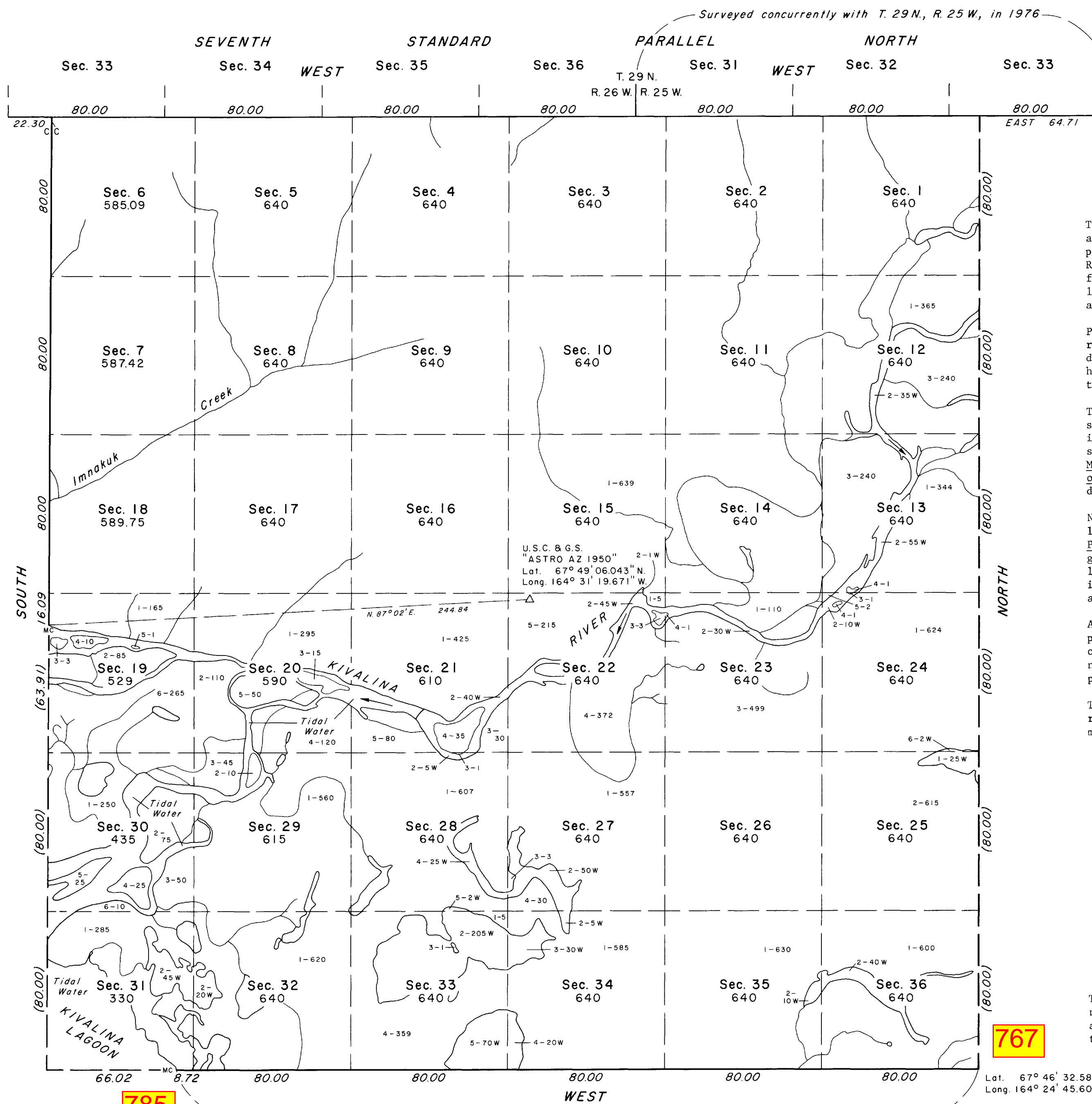


Authorized by memorandum 9600 (D-401), dated February 12, 1982.

TOWNSHIP 28 NORTH, RANGE 26 WEST, OF THE KATEEL RIVER MERIDIAN, ALASKA



The survey of the west boundary of T. 28 N., R. 26 W., and a portion of the Seventh Standard Parallel North, along a portion of the south boundary of T. 29 N., R. 26 W., Kateel River Meridian, Alaska, was executed by George C. Schwaderer for Schwaderer and Budka, July 27, 1976 through August 28, 1976, under Special Instructions dated February 4, 1976, and Contract No. YA-512-CT6-208, for Group No. 257, Alaska.

Portions of this township were protracted based on the record of the surveyed lines, the official protraction diagram, the line of mean high tide, and the line of mean high water, as shown on current U.S. Geological Survey topographic maps.

The surveys executed under this contract were field inspected by Clyde Duren, Jr., Contracting Officer's Authorized Representative, and found to have been executed in strict conformance with the Special Instructions, the Manual of Instructions for the Survey of the Public Lands of the United States, 1973, and in the specific manner described in the field notes of this survey.

Nontidal waters considered meanderable under the guidelines of the Manual of Instructions for the Survey of the Public Lands of the United States, 1973, have been segregated and defined on this plat, and are identified by the letter "W" following the given areas. These areas are included in the total "area surveyed" for each section and for the township.

An arbitrary line has been designated in the river on the plat to define the limit of tidal water. The locations of this line was determined by inspection only and does not purport to represent an exact determination of the point in the river where tidal effect ceases.

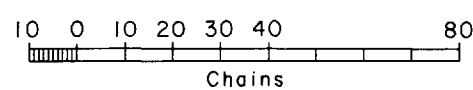
The hydrography shown on this plat was obtained from current U.S. Geological Survey quadrangle maps, and measurements to topographic features.

UNITED STATES DEPARTMENT OF THE INTERIOR
BUREAU OF LAND MANAGEMENT
Washington, D.C. December 28, 1978

This plat is strictly conformable to the approved field notes, and the survey, having been correctly executed in accordance with the requirements of law and the regulations of this Bureau, is hereby accepted.

For the Director

Donald W. Fisher
Chief, Division of Cadastral Survey



Area Surveyed: 22,151.26 Acres

767

785

Vol. 63

TOWNSHIP 28 NORTH, RANGE 26 WEST, OF THE KATEEL RIVER MERIDIAN, ALASKA
 PHOTOGRAMMETRIC RESURVEY AND SEGREGATION SURVEY

This photogrammetric resurvey and segregation survey plat of sections 12, 13, 14, 15, 16, 17, 20, 21, 22, 23, 24, 29, and 36, Township 28 North, Range 26 West, Kateel River Meridian, Alaska, shows amended lotting; revises portions of the hydrography; segregates U.S. Survey Nos. 6843, 6846, 6847, 6848, and 6853; and revises and segregates areas of water previously identified by a lot number but not segregated from the total areas surveyed as shown on the original township plat. Except as indicated hereon, the lottings and areas are as shown on the plat accepted December 28, 1978. These revisions are based upon the official survey records; the resurvey of certain rectangular meanders as controlled by current U.S. survey positions and 1978 aerial photography; color infrared photography flown in July 1978 by the National Aeronautics and Space Administration; the plat of Township 28 North, Range 26 West, Kateel River Meridian, Alaska, accepted December 28, 1978; the plat of U.S. Survey No. 6843 accepted April 26, 1995; the plat of U.S. Survey No. 6846 accepted April 26, 1995; the plat of U.S. Survey No. 6847 accepted December 1, 1987; the plat of U.S. Survey No. 6848 accepted December 1, 1987; the plat of U.S. Survey No. 6853 accepted May 12, 1982; Special Instructions for Group No. 623 dated May 1, 1994, and approved May 1, 1994; and Assignment Instructions dated May 11, 2004.

Acceptance of this survey does not purport to transfer any interest in submerged lands to which the State of Alaska is entitled under the Equal Footing Doctrine and Section 6 (m) of the Alaska Statehood Act, P.L. 85-508, notwithstanding the use, location, or absence of meander lines to depict water bodies.

UNITED STATES DEPARTMENT OF THE INTERIOR
 BUREAU OF LAND MANAGEMENT
 Anchorage, Alaska

This photogrammetric resurvey and segregation survey plat is based upon the official records and, having been correctly prepared in accordance with the regulations of this Bureau, is hereby accepted.

For the Director

John Swartz Oct. 6, 2006
 Date

Deputy State Director for Cadastral Survey, Alaska

