

Water lot designations are to facilitate identification and computations only and are not intended to fix boundaries or alter riparian entitlements.

Authorized by memorandum 9600 (D-401), dated February 12, 1982.

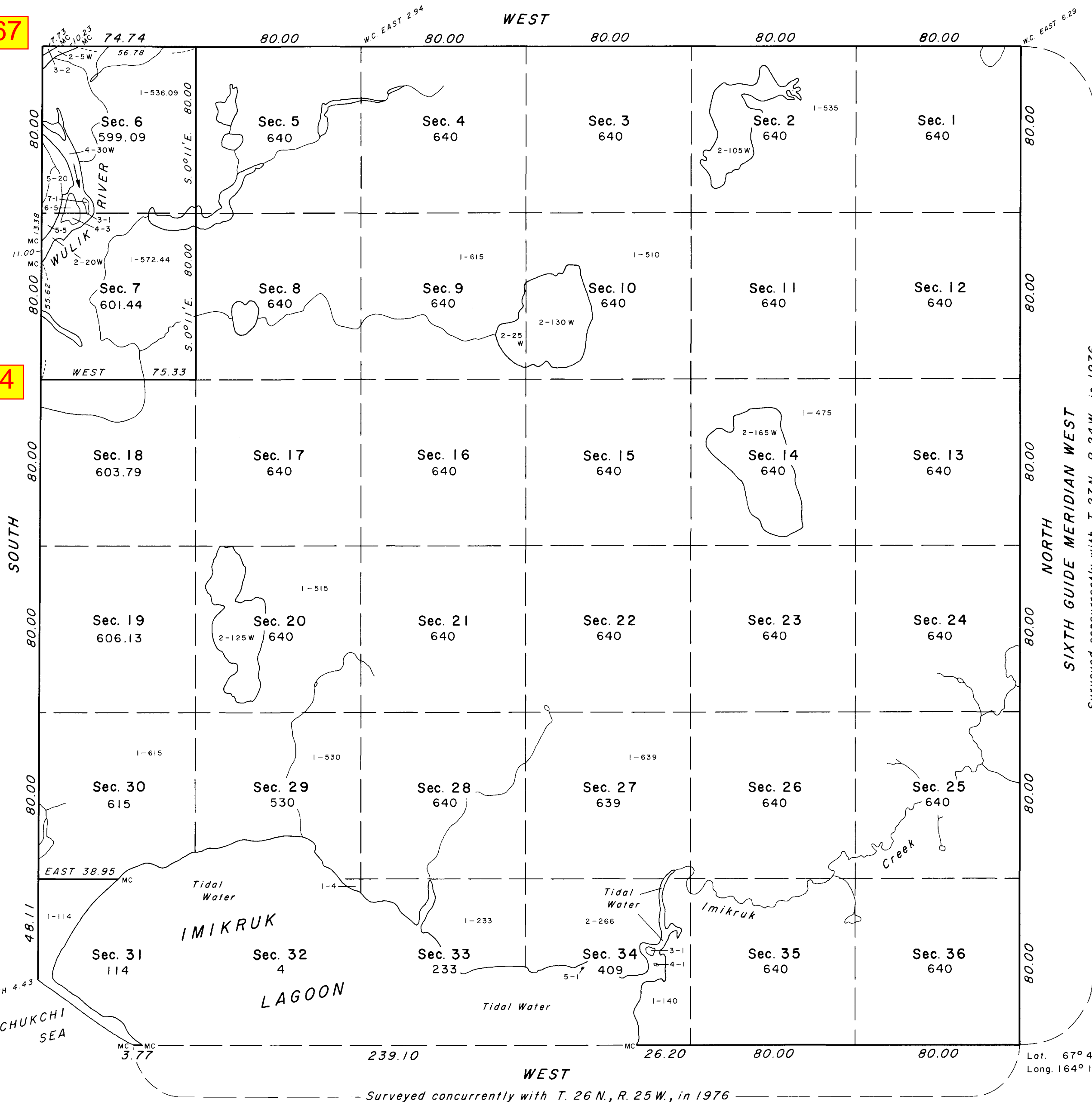
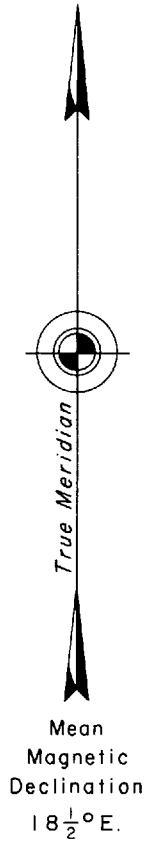
Mapping source referred to on this plat is USGS quadrangle maps "NOATAK (C-5)," Alaska, 1952 edition, with minor revisions in 1973, and "NOATAK (D-5)," Alaska, 1955 edition.

ORIGINAL

TOWNSHIP 27 NORTH, RANGE 25 WEST, OF THE KATEEL RIVER MERIDIAN, ALASKA

767

784



The survey of the west and north boundaries and a portion of the subdivisional lines of T. 27 N., R. 25 W., Kateel River Meridian, Alaska, was executed by George C. Schwaderer for Schwaderer and Budka, July 27, 1976 through August 28, 1976, under Special Instructions dated February 4, 1976, and Contract No. YA-512-CT6-208, for Group No. 257, Alaska.

Portions of this township were protracted based on the record of the surveyed lines, the official protraction diagram, the line of mean high tide, and the line of mean high water, as shown on current U.S. Geological Survey topographic maps.

The surveys executed under this contract were field inspected by Clyde Duren, Jr., Contracting Officer's Authorized Representative, and found to have been executed in strict conformance with the Special Instructions, the Manual of Instructions for the Survey of the Public Lands of the United States, 1973, and in the specific manner described in the field notes of this survey.

Nontidal waters considered meanderable under the guidelines of the Manual of Instructions for the Survey of the Public Lands of the United States, 1973, have been segregated and defined on this plat, and are identified by the letter "W" following the given areas. These areas are included in the total "area surveyed" for each section and for the township.

The hydrography shown on this plat was obtained from current U.S. Geological Survey quadrangle maps, and measurements to topographic features.

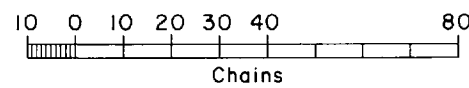
UNITED STATES DEPARTMENT OF THE INTERIOR
BUREAU OF LAND MANAGEMENT
Washington, D.C. December 28, 1978

This plat is strictly conformable to the approved field notes, and the survey, having been correctly executed in accordance with the requirements of law and the regulations of this Bureau, is hereby accepted.

For the Director

Chief, Division of Cadastral Survey

Lat. 67° 41' 20.91" N.
Long. 164° 11' 11.41" W.



Area Surveyed: 20,954.45 Acres

Vol. 63

TOWNSHIP 27 NORTH, RANGE 25 WEST, OF THE KATEEL RIVER MERIDIAN, ALASKA
 SEGREGATION SURVEY

This segregation survey plat of sections 6, 7, 31, 34, and 35, Township 27 North, Range 25 West, Kateel River Meridian, Alaska, shows amended lotting and revises portions of the hydrography; segregates U.S. Survey Nos. 6815, 6816, and 6817; and revises and segregates areas of water previously identified by a lot number but not segregated from the total areas surveyed as shown on the original township plat. Except as indicated hereon, the lottings and areas are as shown on the plat accepted December 28, 1978. These revisions are based upon the official survey records; the resurvey of certain rectangular meanders as controlled by current U.S. survey positions; color infrared photography flown in July 1978 by the National Aeronautics and Space Administration; the plat of Township 27 North, Range 25 West, Kateel River Meridian, Alaska, accepted December 28, 1978; the plat of U.S. Survey No. 6815 accepted April 26, 1995; the plat of U.S. Survey No. 6816 accepted June 3, 1982; the plat of U.S. Survey No. 6817 accepted April 26, 1995; Special Instructions for Group No. 623 dated May 1, 1994, and approved May 1, 1994; and Assignment Instructions dated May 11, 2004.

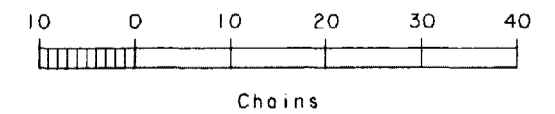
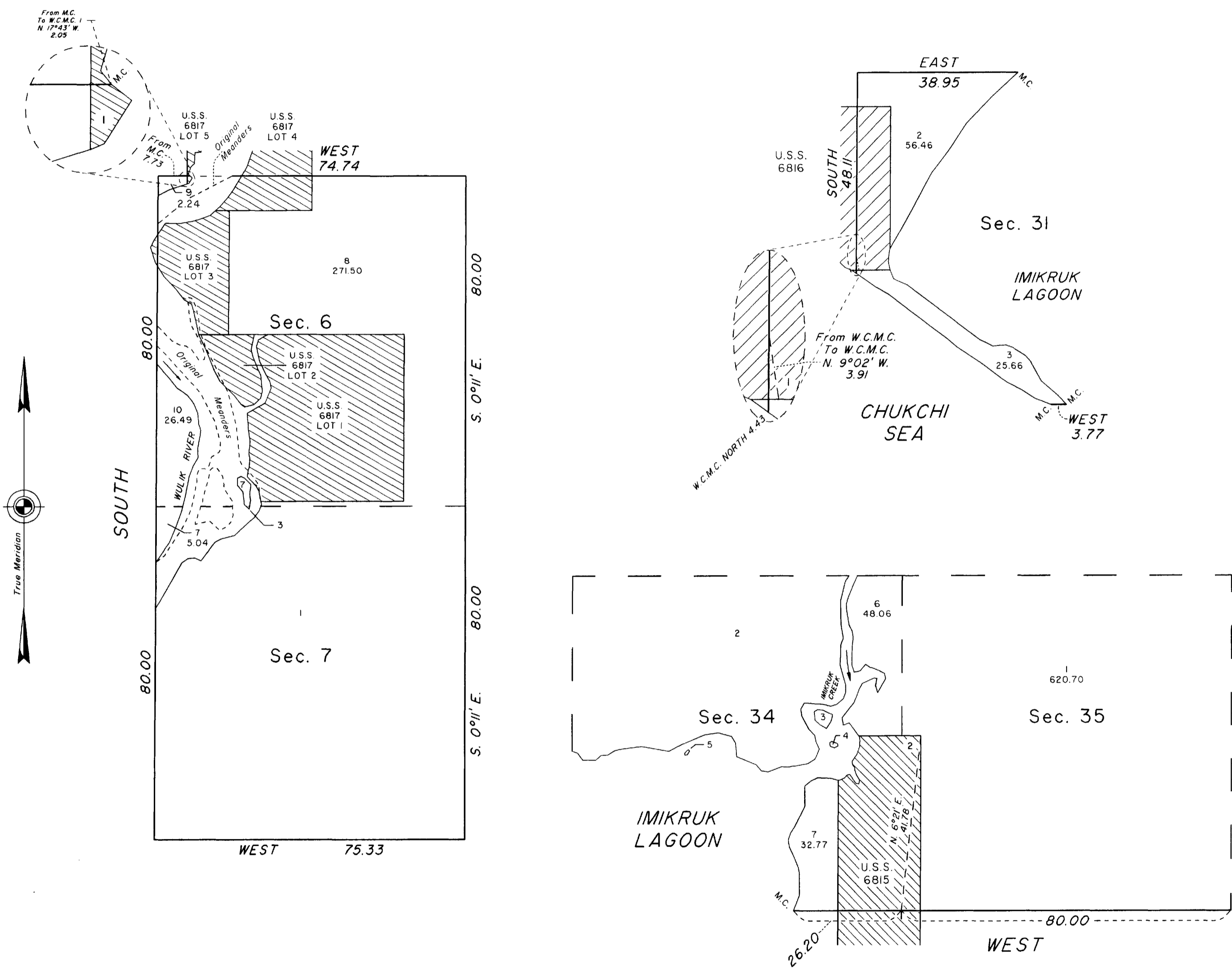
Acceptance of this survey does not purport to transfer any interest in submerged lands to which the State of Alaska is entitled under the Equal Footing Doctrine and Section 6 (m) of the Alaska Statehood Act, P.L. 85-508, notwithstanding the use, location, or absence of meander lines to depict water bodies.

UNITED STATES DEPARTMENT OF THE INTERIOR
 BUREAU OF LAND MANAGEMENT
 Anchorage, Alaska

This segregation survey plat is based upon the official records and, having been correctly prepared in accordance with the regulations of this Bureau, is hereby accepted.

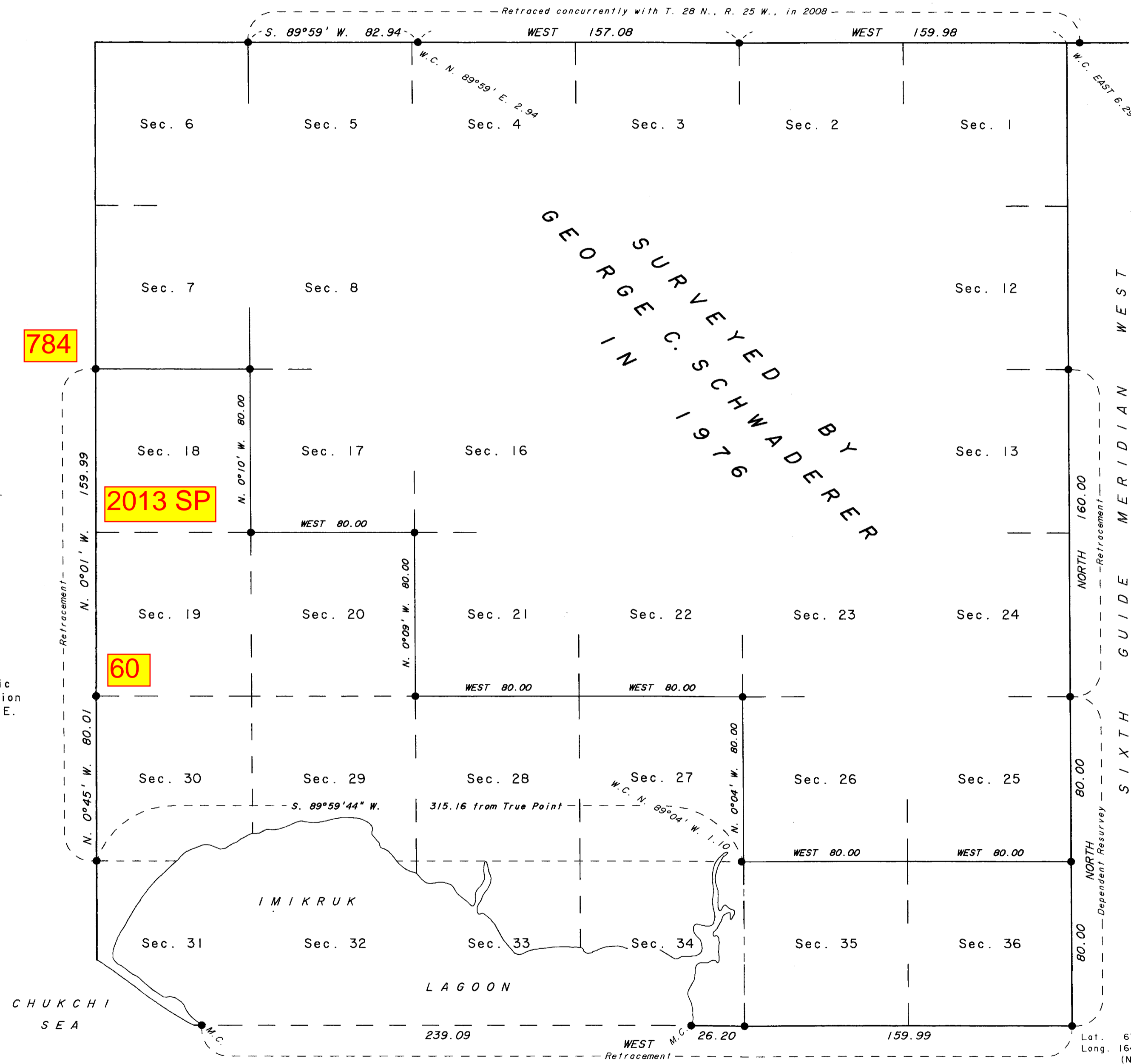
For the Director

Jerry B. Lewis (Acting) Sep. 15, 2006
 Date
 Deputy State Director for Cadastral Survey, Alaska



TOWNSHIP 27 NORTH, RANGE 25 WEST, OF THE KATEEL RIVER MERIDIAN, ALASKA

DEPENDENT RESURVEY, RETRACEMENT AND SURVEY



The history of surveys is contained in the field notes.

This plat and field notes represent the dependent resurvey and retracement of the Sixth Guide Meridian West, along a portion of the east boundary, the retracement of a portion of the south boundary, the retracement of a portion of the west boundary, and the survey of a portion of the subdivisional lines of Township 27 North, Range 25 West, Kateel River Meridian, Alaska.

This survey was executed by James S. Robar, Registered Alaska Land Surveyor No. LS-6095, for WHPacific, Inc., August 3 through September 2, 2008, in accordance with the specifications set forth in the Manual of Surveying Instructions, 1973, Special Instructions for Group No. 1049, Alaska, dated March 20, 2008, approved March 26, 2008, under Contract No. NAA080004, awarded June 9, 2008, and Notice To Proceed dated July 31, 2008.

The direction of all lines returned on this plat, including ties, are reported as mean bearings with reference to the true meridian.

Settling and areas are as shown on the plat of survey accepted December 28, 1978 and the segregation survey plat accepted September 15, 2006.

Controlling positions are defined by the relationship of identified recovered corners with the protracted lines shown on the official plat of survey accepted December 28, 1978. Calculated bearings and distances ascertained by these relationships are reported on a calculation diagram within the field notes.

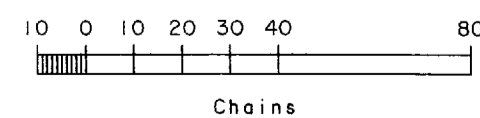
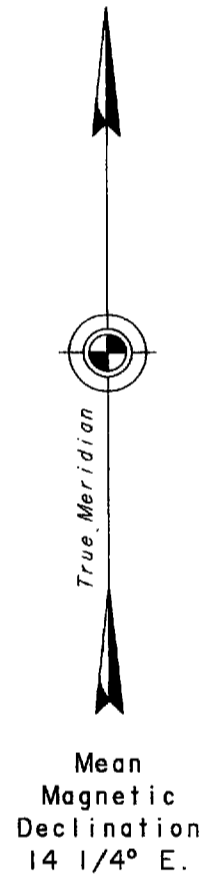
UNITED STATES DEPARTMENT OF THE INTERIOR
BUREAU OF LAND MANAGEMENT
Anchorage, Alaska

This plat is strictly conformable to the approved field notes, and the survey, having been correctly executed in accordance with the requirements of law and the regulations of this Bureau, is hereby accepted.

For the Director

APRIL 15, 2011
Date

Chief Cadastral Surveyor for Alaska



Lat. 67°41'20.91" N.
Long. 164°11'11.41" W.
(NAD 27)