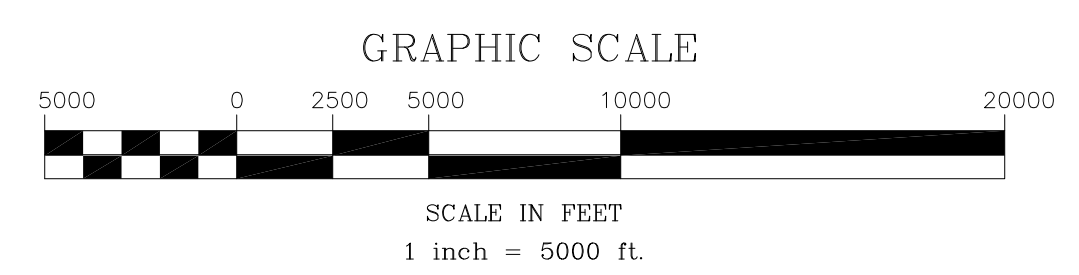
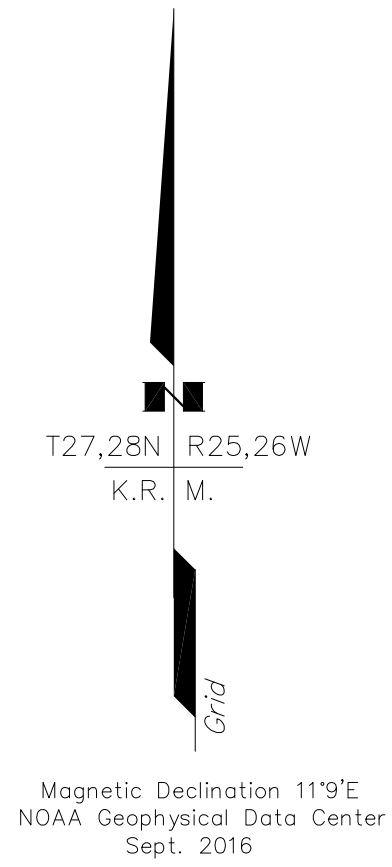
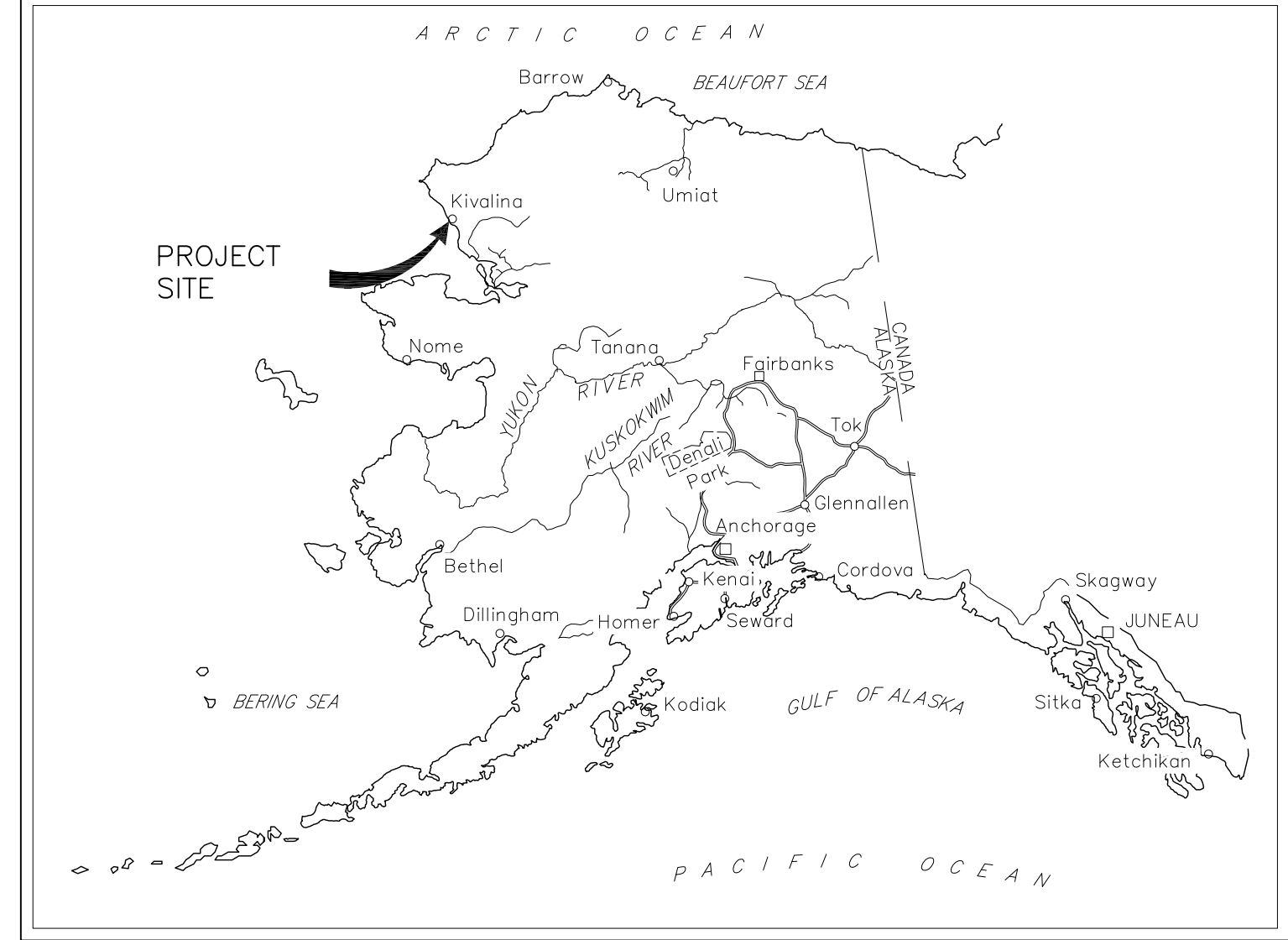


LEGEND

- SS Drive Rod in case Control Point
- Federal Primary Monument
- Control Point
- Bench Mark
- Monument Number
- Section Line
- Township Line
- Property Line
- Parcel #



HORIZONTAL AND VERTICAL CONTROL							
NAD83(2011) GEODETIC COORDINATES		LOCAL GROUND COORDINATES		ELL. HT. ORTHO HT.		DESCRIPTION	
POINT	LATITUDE	LONGITUDE	NORTHING	EASTING	FT.	FT.	
767	67°46'30.13267"N	164°24'56.08576"W	5037977.368	1859882.102	20.46	20.50	Fd IP/BC[BLM]: T28N R26W R25W S36 S31 S1 S6 T27N 1976
780	67°48'16.31407"N	164°24'52.99442"W	5048769.685	1859724.586	72.45	72.52	Fd IP/BC[BLM]: WC T28N R26W R25W S24 S19 S25 S30 2008
781	67°48'14.04072"N	164°20'31.34565"W	5048802.206	1869783.868	59.62	59.60	Fd Copper Coated Steel Post[BLM]: S20 S21 S28 S29 T28N R25W
782	67°49'57.91644"N	164°20'32.02496"W	5059356.256	1869474.903	366.27	366.27	Fd IP/BC[BLM]: S8 S9 S16 S17 T28N R25W
783	67°49'57.93456"N	164°24'56.08149"W	5059092.510	1859341.492	31.25	31.34	Fd SS POST BC[BLM]: S7 S12 S13 S18 T28N R26W R25W 2008
784	67°44'46.22779"N	164°24'56.09895"W	5027419.440	1860151.905	14.68	14.67	Fd SS POST BC[BLM]: S7 S12 S13 S18 T27N R26W R25W 2008 1976
785	67°46'30.16333"N	164°36'36.92804"W	5037332.521	1832919.044	4.94	5.21	Set Rbr/AC[LS5480]: MC 31 T28N S6 T27N R26W 2016



PROPOSED RIGHT OF WAY INTEREST

PARCEL #	AREA (ACRES)	LAND OWNER	PROPOSED INTEREST	LEGAL DESCRIPTION
E1	2.306	AIRPORT PROPERTY, SECTION 16, STATE OF ALASKA	EASEMENT TO CITY OF KIVALINA	T. 27N., R. 26 W., S. 21
2	3.218	TIDELANDS, DNR AIRPORT PROPERTY, SECTION 16, STATE OF ALASKA	EASEMENT TO DOT, APPROVAL FROM FAA FOR NON-AERONAUTICAL USE	T. 27N., R. 26 W., S. 21
3	0.252	TIDELANDS, DNR AIRPORT PROPERTY, SECTION 16, STATE OF ALASKA	EASEMENT TO DOT, APPROVAL FROM FAA FOR NON-AERONAUTICAL USE	T. 27N., R. 26 W., S. 16
4	0.227	TIDELANDS, DNR	EASEMENT TO DOT	T. 27N., R. 26 W., S. 21
5	15.506	TIDELANDS, DNR	EASEMENT TO DOT	T. 27N., R. 26 W., S. 16
6	2.653	TIDELANDS, DNR	EASEMENT TO DOT	T. 27N., R. 26 W., S. 15
7	37.833	NANA REGIONAL CORPORATION (surface, subsurface)	INTERIM EASEMENT TO CITY OF KIVALINA 14(c)(3) TRANSFER TO CITY OF KIVALINA	T. 27N., R. 26 W., S. 15
8	17.772	NANA REGIONAL CORPORATION (surface, subsurface)	INTERIM EASEMENT TO CITY OF KIVALINA 14(c)(3) TRANSFER TO CITY OF KIVALINA	T. 27N., R. 26 W., S. 10
9	43.991	NANA REGIONAL CORPORATION (surface, subsurface)	INTERIM EASEMENT TO CITY OF KIVALINA 14(c)(3) TRANSFER TO CITY OF KIVALINA	T. 27N., R. 26 W., S. 11
10	15.011	NANA REGIONAL CORPORATION (surface, subsurface)	INTERIM EASEMENT TO CITY OF KIVALINA 14(c)(3) TRANSFER TO CITY OF KIVALINA	T. 27N., R. 26 W., S. 2
11	28.66	NANA REGIONAL CORPORATION (surface, subsurface)	INTERIM EASEMENT TO CITY OF KIVALINA 14(c)(3) TRANSFER TO CITY OF KIVALINA	T. 27N., R. 26 W., S. 1
12	32.097	NANA REGIONAL CORPORATION (surface, subsurface)	INTERIM EASEMENT TO CITY OF KIVALINA 14(c)(3) TRANSFER TO CITY OF KIVALINA	T. 28N., R. 26 W., S. 36
13	21.337	NANA REGIONAL CORPORATION (surface, subsurface)	INTERIM EASEMENT TO CITY OF KIVALINA 14(c)(3) TRANSFER TO CITY OF KIVALINA	T. 28N., R. 25 W., S. 31
14	41.116	NANA REGIONAL CORPORATION (surface, subsurface)	INTERIM EASEMENT TO CITY OF KIVALINA 14(c)(3) TRANSFER TO CITY OF KIVALINA	T. 28N., R. 25 W., S. 30
15	7.384	NANA REGIONAL CORPORATION (surface, subsurface)	INTERIM EASEMENT TO CITY OF KIVALINA 14(c)(3) TRANSFER TO CITY OF KIVALINA	T. 28N., R. 25 W., S. 19
16	4.107	NANA REGIONAL CORPORATION (surface, subsurface)	INTERIM EASEMENT TO CITY OF KIVALINA 14(c)(3) TRANSFER TO CITY OF KIVALINA	T. 28N., R. 25 W., S. 20

NOTES:

1. This Map is intended to serve as a preliminary right of way map for Nana Regional Corporation Inc., (NANA) for preparation of an interim easement to the City of Kivalina, for construction of the Kivalina Evacuation & School Site Access Road.
2. For survey control, refer to Record of Survey, Kivalina Evacuation & School Site Access Road, #0002384/NFHWO00162, 2/22/18
3. This project uses a new coordinate system developed for the Kivalina Evacuation Road Project. Specifically, it is a modified NAD83(1992) Alaska State Plane Zone 8 coordinate system, U.S. Survey Feet, scaled to ground. It is scaled at point 564 (SACS KVL C), N5,020,923.786, E1,842,249.488 using the combined scale factor of 1.000049160456. Note that this project is not scaled at NO, EO.
4. The Basis of Bearing is grid.
5. Elevations are NAVD88 orthometric heights expressed in US Survey Feet. The Basis of Elevations is point 564, SACS KVL C, having a value of 16.11 Feet. The NAVD 88 orthometric height for this point is taken from the National Geodetic Survey Datasheet.
6. The NAVD 88 orthometric height for all other listed points was determined by static GPS observations recorded Sept. 14 through Sept. 21, 2016 using Topcon dual frequency GPS receivers and geoid model (Geoid-2012A).
7. PLSS monuments shown are in their true location related to the project coordinate system and proposed right of way extents. Existing roads and section and property lines are shown for background and orientation only.

STATE OF ALASKA
DEPARTMENT OF TRANSPORTATION
&
PUBLIC FACILITIES

INTERIM EASEMENT FOR
Project No. 0002384/NFHWO0162
Kivalina Evacuation and
School Site Access Road

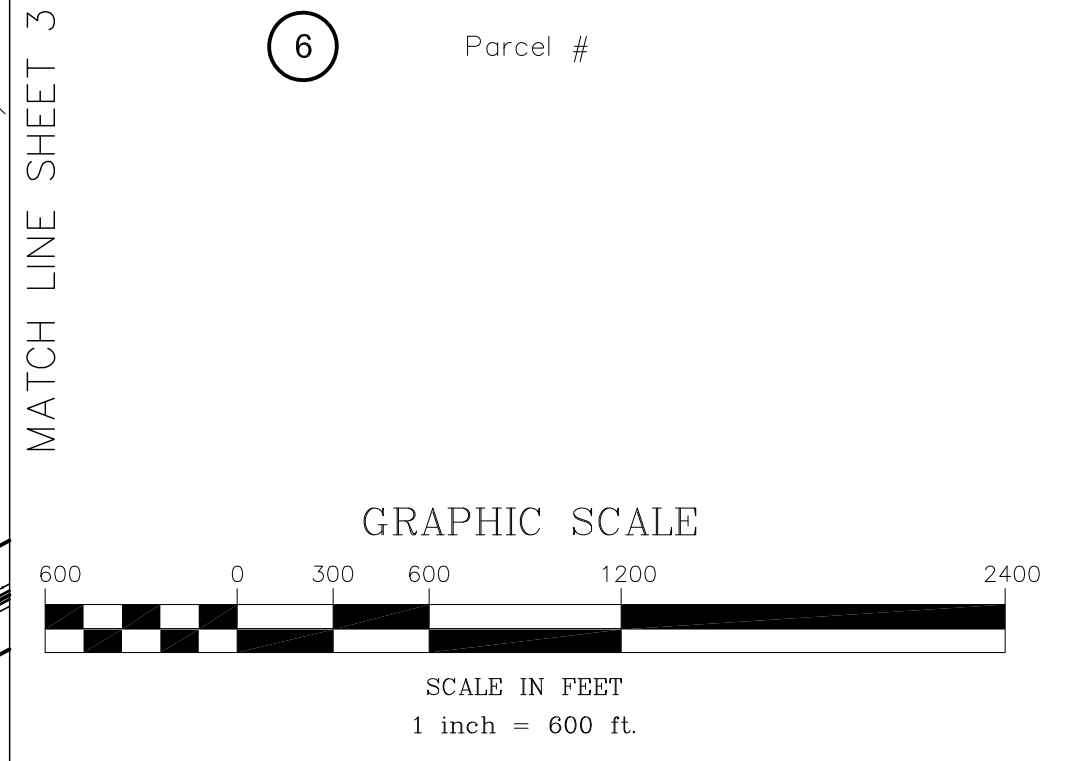
Located within:
Sections 6, 7, 18, T.27N., R.25W.
Sections 1, 6, 10-13, 17, 21, T.27N., R.26W.
Sections 7-9, 16-21, 28-32, T.28N., R.25W.
Sections 12, 13, 23-25, 31, 35, 36, T.28N., R.26W.
Kateel River Meridian, Alaska

DRAWN jjh	DATE 5-02-18	SCALE 1" = 5000'
CHECKED	DATE	SHEET 1



T27N R26W
 K.R.M.
 Grid
 Magnetic Declination 119'E
 NOAA Geophysical Data Center
 Sept. 2016

- LEGEND**
- SS Drive Rod in case Control Point
 - Federal Primary Monument
 - Control Point
 - Bench Mark
 - Monument Number
 - Section Line
 - Township Line
 - Property Line
 - Parcel #

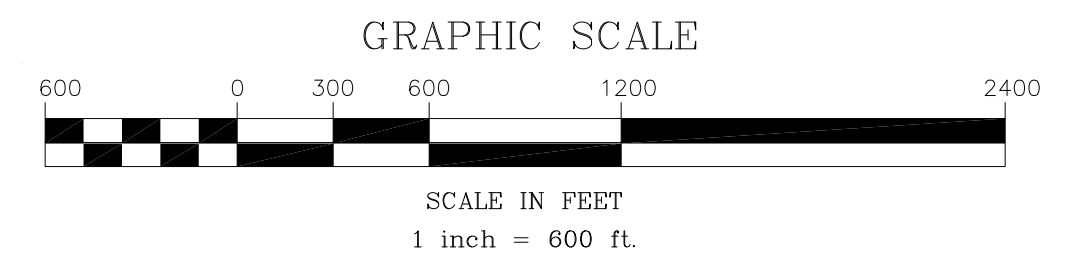


STATE OF ALASKA
 DEPARTMENT OF TRANSPORTATION
 &
 PUBLIC FACILITIES
 INTERIM EASEMENT FOR
 Project No. 0002384/NFHWO0162
 Kivalina Evacuation and
 School Site Access Road
 Located within:
 Sections 6, 7, 18, T.27N., R.25W.
 Sections 1, 6, 10-13, 17, 21, T.27N., R.26W.
 Sections 7-9, 16-21, 28-32, T.28N., R.25W.
 Sections 12, 13, 23-25, 31, 35, 36, T.28N., R.26W.
 Kateel River Meridian, Alaska

DRAWN	jjh	DATE	5-02-18	SCALE	1" = 600'
CHECKED		DATE		SHEET	2



- LEGEND**
- SS Drive Rod in case Control Point
 - Federal Primary Monument
 - Control Point
 - Bench Mark
 - Monument Number
 - Section Line
 - Township Line
 - Property Line
 - Parcel #



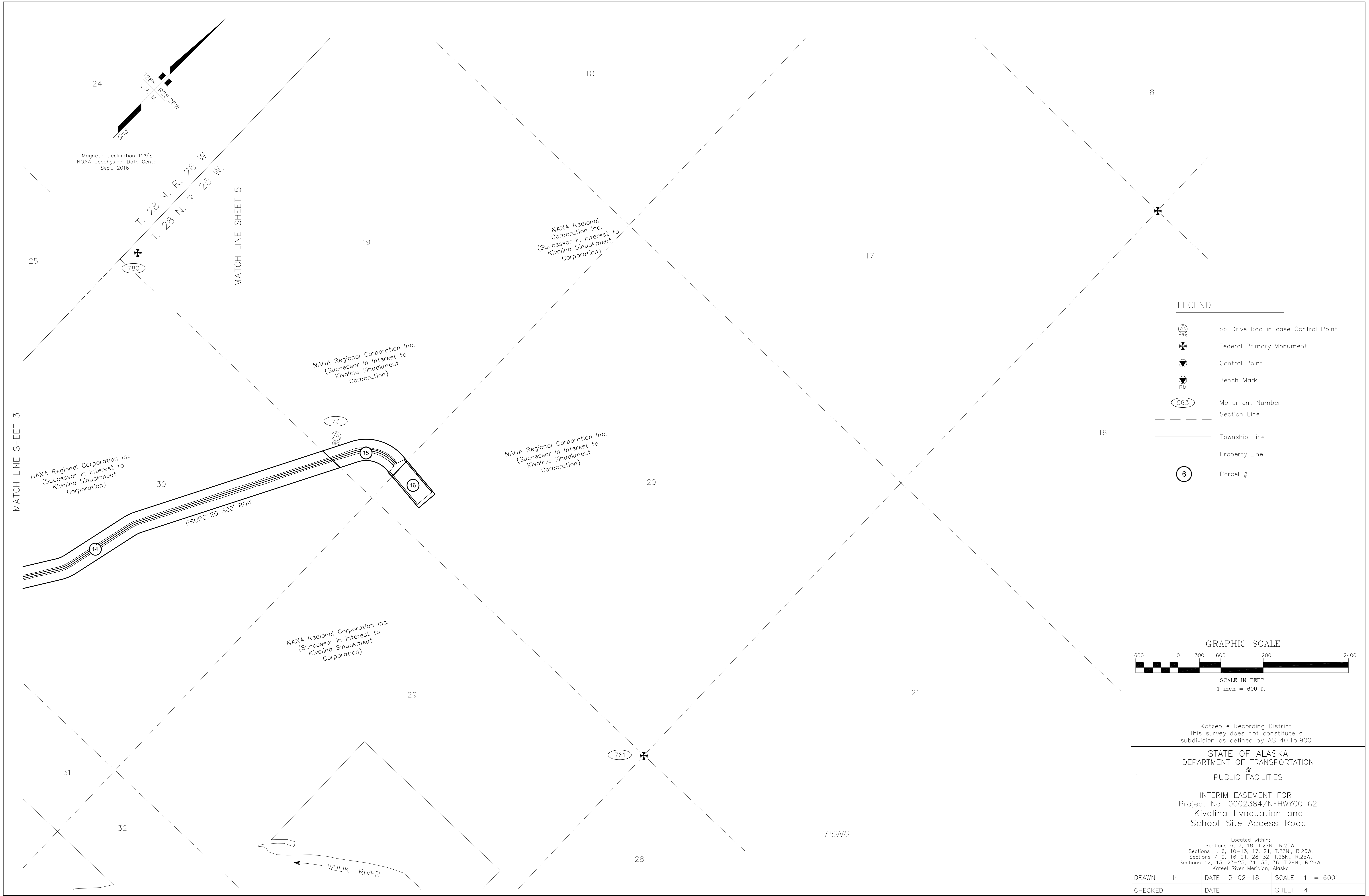
Kotzebue Recording District
 This survey does not constitute a
 subdivision as defined by AS 40.15.900

STATE OF ALASKA
 DEPARTMENT OF TRANSPORTATION
 &
 PUBLIC FACILITIES

INTERIM EASEMENT FOR
 Project No. 0002384/NFHWY00162
 Kivalina Evacuation and
 School Site Access Road

Located within:
 Sections 6, 7, 18, T.27N., R.25W.
 Sections 1, 6, 10-13, 17, 21, T.27N., R.26W.
 Sections 7-9, 16-21, 28-32, T.28N., R.25W.
 Sections 12, 13, 23-25, 31, 35, 36, T.28N., R.26W.
 Koteel River Meridian, Alaska

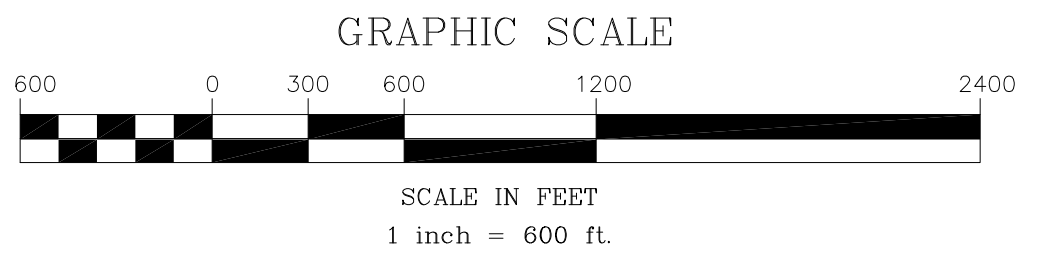
DRAWN	jjh	DATE	5-02-18	SCALE	1" = 600'
CHECKED		DATE		SHEET	3



Magnetic Declination 11'9"E
NOAA Geophysical Data Center
Sept. 2016

LEGEND

- SS Drive Rod in case Control Point
- Federal Primary Monument
- Control Point
- Bench Mark
- Monument Number
- Section Line
- Township Line
- Property Line
- Parcel #



Kotzebue Recording District
This survey does not constitute a
subdivision as defined by AS 40.15.900

STATE OF ALASKA
DEPARTMENT OF TRANSPORTATION
&
PUBLIC FACILITIES

INTERIM EASEMENT FOR
Project No. 0002384/NFHWO0162
Kivalina Evacuation and
School Site Access Road

Located within:
Sections 6, 7, 18, T.27N., R.25W.
Sections 1, 6, 10-13, 17, 21, T.27N., R.26W.
Sections 7-9, 16-21, 28-32, T.28N., R.25W.
Sections 12, 13, 23-25, 31, 35, 36, T.28N., R.26W.
Kateel River Meridian, Alaska

DRAWN	jjh	DATE	5-02-18	SCALE	1" = 600'
CHECKED		DATE		SHEET	4