

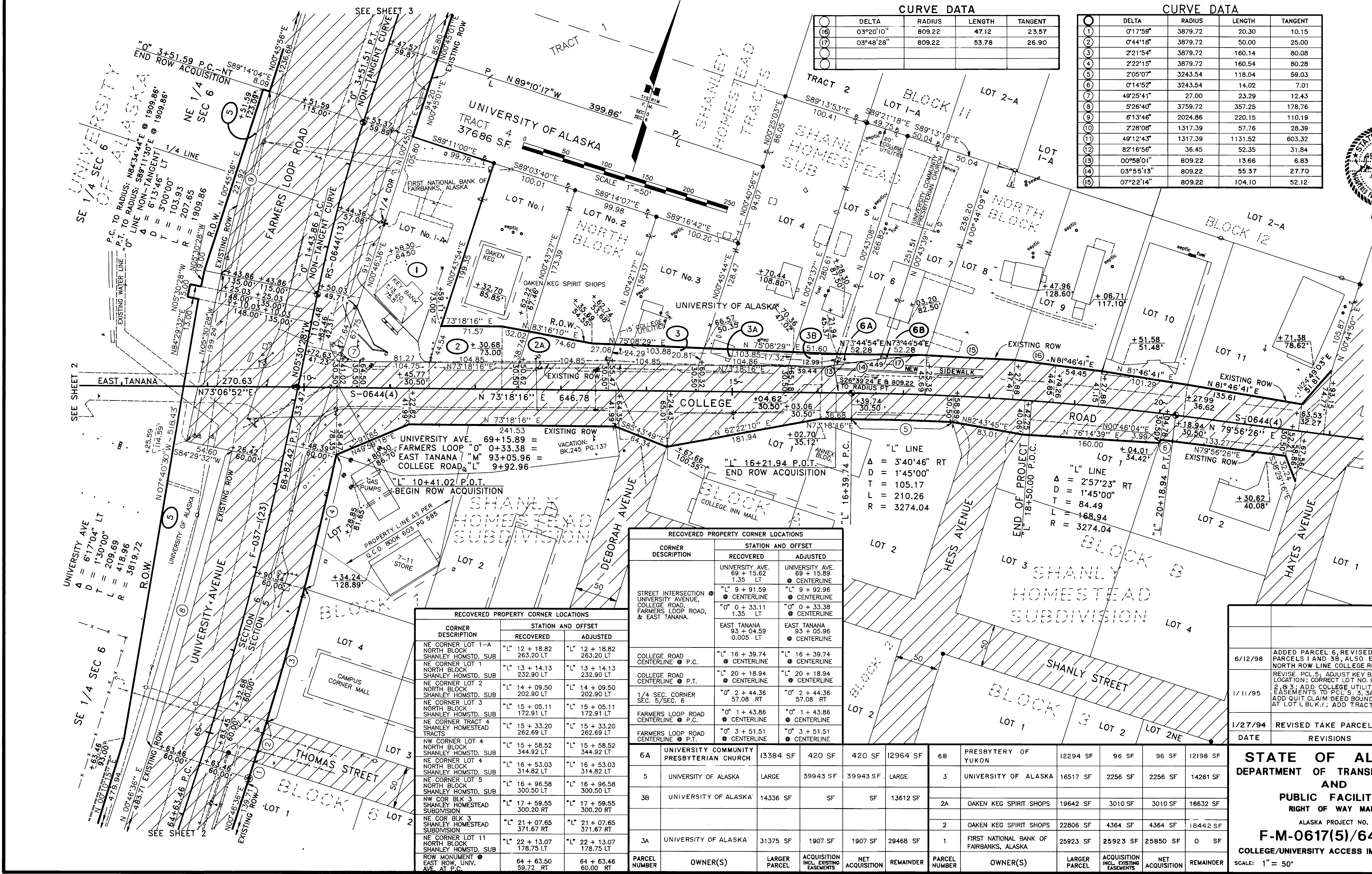
11-22-93

CURVE DATA

DELTA	RADIUS	LENGTH	TANGENT
03°20'10"	809.22	47.12	23.57
03°48'28"	809.22	53.78	26.90

CURVE DATA

DELTA	RADIUS	LENGTH	TANGENT
01°17'59"	3879.72	20.30	10.15
04°41'18"	3879.72	50.00	25.00
2°21'54"	3879.72	160.14	80.08
2°22'15"	3879.72	160.54	80.28
2°05'07"	3243.54	118.04	59.03
01°14'52"	3243.54	14.02	7.01
49°25'41"	27.00	23.29	12.43
5°26'40"	3759.72	357.25	178.76
6°13'46"	2024.86	220.15	110.19
2°28'08"	1317.39	57.76	28.39
49°12'43"	1317.39	1131.52	603.32
82°16'56"	36.45	52.35	31.84
00°58'01"	809.22	13.66	6.83
03°55'13"	809.22	55.37	27.70
07°22'14"	809.22	104.10	52.12



RECOVERED PROPERTY CORNER LOCATIONS

CORNER DESCRIPTION	STATION AND OFFSET	
	RECOVERED	ADJUSTED
UNIVERSITY AVE. 69+15.89	UNIVERSITY AVE. 69+15.89	UNIVERSITY AVE. 69+15.89
STREET INTERSECTION UNIVERSITY AVENUE, COLLEGE ROAD, FARMERS LOOP ROAD, & EAST TANANA.	"L" 9+91.59 ● CENTERLINE	"L" 9+92.96 ● CENTERLINE
EAST TANANA 93+04.59	"0" 0+33.11 1.35 LT	"0" 0+33.38 ● CENTERLINE
COLLEGE ROAD CENTERLINE ● P.C.	"L" 16+39.74 ● CENTERLINE	"L" 16+39.74 ● CENTERLINE
COLLEGE ROAD CENTERLINE ● P.T.	"L" 20+18.94 ● CENTERLINE	"L" 20+18.94 ● CENTERLINE
1/4 SEC. CORNER SEC. 5/SEC. 6	"0" 2+44.36 57.08 RT	"0" 2+44.36 57.08 RT
FARMERS LOOP ROAD CENTERLINE ● P.C.	"0" 1+43.86 ● CENTERLINE	"0" 1+43.86 ● CENTERLINE
FARMERS LOOP ROAD CENTERLINE ● P.T.	"0" 3+51.51 ● CENTERLINE	"0" 3+51.51 ● CENTERLINE

RECOVERED PROPERTY CORNER LOCATIONS

CORNER DESCRIPTION	STATION AND OFFSET	
	RECOVERED	ADJUSTED
NE CORNER LOT 1-A NORTH BLOCK SHANLEY HOMSTD. SUB	"L" 12+18.82 263.20 LT	"L" 12+18.82 263.20 LT
NE CORNER LOT 1 NORTH BLOCK SHANLEY HOMSTD. SUB	"L" 13+14.13 232.90 LT	"L" 13+14.13 232.90 LT
NE CORNER LOT 2 NORTH BLOCK SHANLEY HOMSTD. SUB	"L" 14+09.50 202.90 LT	"L" 14+09.50 202.90 LT
NE CORNER LOT 3 NORTH BLOCK SHANLEY HOMSTD. SUB	"L" 15+05.11 172.91 LT	"L" 15+05.11 172.91 LT
NE CORNER TRACT 4 SHANLEY HOMESTEAD TRACTS	"L" 15+33.20 262.69 LT	"L" 15+33.20 262.69 LT
NW CORNER LOT 4 NORTH BLOCK SHANLEY HOMSTD. SUB	"L" 15+58.52 344.92 LT	"L" 15+58.52 344.92 LT
NE CORNER LOT 4 NORTH BLOCK SHANLEY HOMSTD. SUB	"L" 16+53.03 314.82 LT	"L" 16+53.03 314.82 LT
NE CORNER LOT 5 NORTH BLOCK SHANLEY HOMSTD. SUB	"L" 16+96.58 300.50 LT	"L" 16+96.58 300.50 LT
NW COR BLK 3 SHANLEY HOMESTEAD SUBDIVISION	"L" 17+59.55 300.20 RT	"L" 17+59.55 300.20 RT
NE COR BLK 3 SHANLEY HOMESTEAD SUBDIVISION	"L" 21+07.65 371.67 RT	"L" 21+07.65 371.67 RT
NE CORNER LOT 11 NORTH BLOCK SHANLEY HOMSTD. SUB	"L" 22+13.07 178.75 LT	"L" 22+13.07 178.75 LT
ROW MONUMENT ● EAST ROW, UNIV. AVE. AT P.C.	64+63.50 59.72 RT	64+63.46 60.00 RT

PARCEL NUMBER	OWNER(S)	LARGER PARCEL	ACQUISITION INCL. EXISTING EASEMENTS	NET ACQUISITION	REMAINDER	PARCEL NUMBER	OWNER(S)	LARGER PARCEL	ACQUISITION INCL. EXISTING EASEMENTS	NET ACQUISITION	REMAINDER
6A	UNIVERSITY OF ALASKA PRESBYTERIAN CHURCH	13384 SF	420 SF	420 SF	12964 SF	6B	PRESBYTERY OF YUKON	12294 SF	96 SF	96 SF	12198 SF
5	UNIVERSITY OF ALASKA	LARGE	39943 SF	39943 SF	LARGE	3	UNIVERSITY OF ALASKA	16517 SF	2256 SF	2256 SF	14261 SF
3B	UNIVERSITY OF ALASKA	14336 SF	SF	SF	13612 SF	2A	OAKEN KEG SPIRIT SHOPS	19642 SF	3010 SF	3010 SF	16632 SF
						2	OAKEN KEG SPIRIT SHOPS	22806 SF	4364 SF	4364 SF	18442 SF
3A	UNIVERSITY OF ALASKA	31375 SF	1907 SF	1907 SF	29468 SF	1	FIRST NATIONAL BANK OF FAIRBANKS, ALASKA	25923 SF	25923 SF	25850 SF	0 SF

DATE	REVISIONS	BY
6/12/98	ADDED PARCEL 6, REVISED PARCELS 1 AND 3B, ALSO EXISTING NORTH ROW LINE COLLEGE RD. L5-11	DSS
1/11/95	REVISE PCL 5, ADJUST KEY BANK LOCATION; CORRECT LOT NO. 1-A, 1, 2, 8, 3; ADD COLLEGE UTILITIES EASEMENTS TO PCL S. 3, 3A, 9, 3B; ADD QUIT CLAIM DEED BOUNDARY AT LOT 1, BLK. I; ADD TRACT 4 S.F.	LLL
1/27/94	REVISED TAKE PARCEL 5	L.L.L.

STATE OF ALASKA
DEPARTMENT OF TRANSPORTATION AND PUBLIC FACILITIES
RIGHT OF WAY MAP
 ALASKA PROJECT NO.
F-M-0617(5)/64360
COLLEGE/UNIVERSITY ACCESS IMPROVEMENTS
 SCALE: 1" = 50' SHEET 1 OF 3

PLAT NO: 2002-97 INSTRUMENT NO.: 2002-022468-0
 Fairbanks Recording District 401: 11/4/02

Sheet No. 1 Drawing No.: 4611
 Project No.: F-M-0617(5)/64360