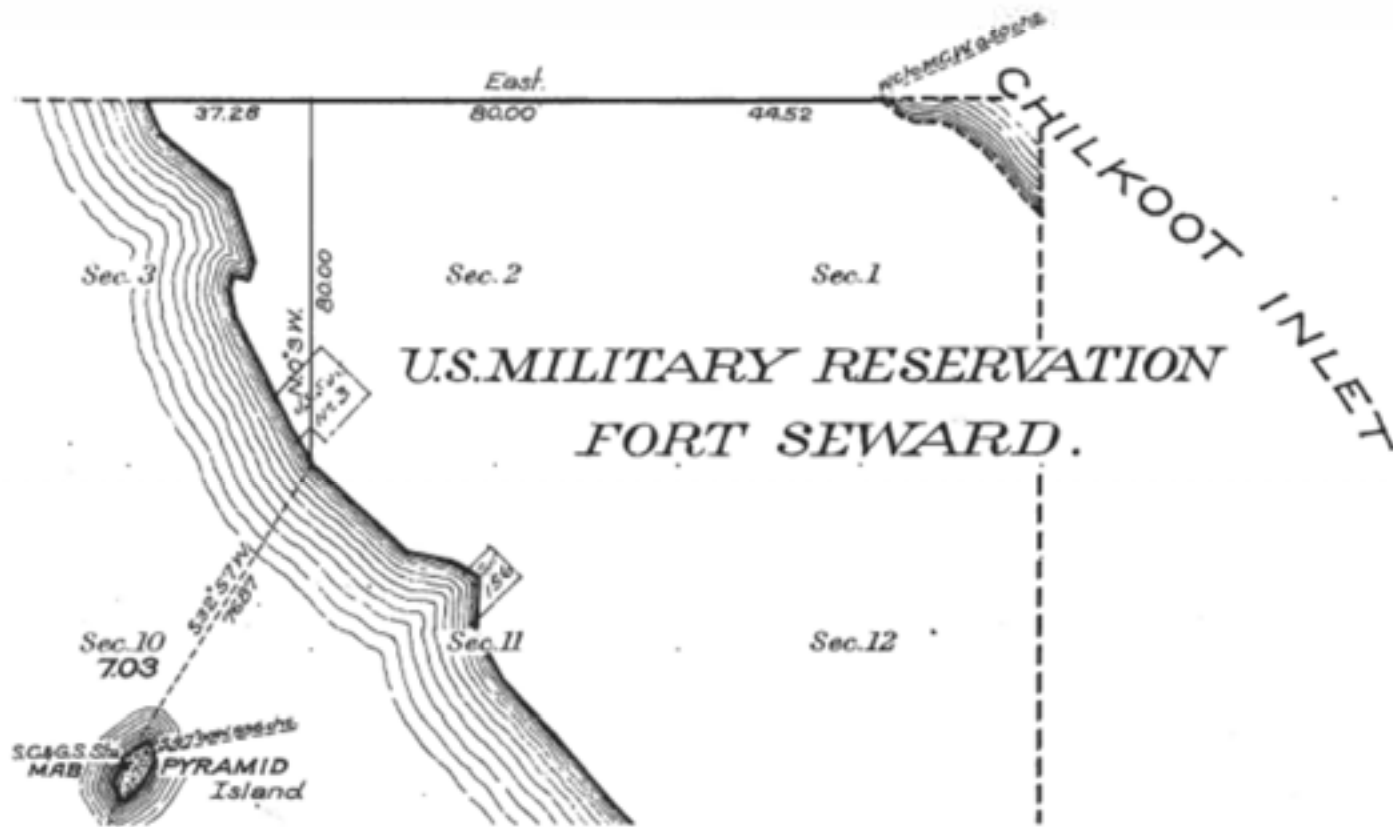


(4-675 a)

Accepted April 15, 1922.

*st. of the Copper Riv. Meridian, Alaska.*



14.80 Cross rocky shore.

16.19 Mean high tide, Chilkat Inlet.

Set an iron post, 3 ft. long, 1 in. dia., 26 ins. in the ground, for meander cor. of frac. secs. 13 and 24, marked on map;

T 31 S R 59 E From which;

MC | S 13  
| S 24

A spruce, 5 ins. dia., bears N. 72° E., 167 lks. dist., marked T31S R59E S13 MC BF.

A cottonwood, 5 ins. dia., bears S. 83° E., 211 lks. dist., marked T31S R59E S24 MC BF.

1919

Land; rocky mountainside.

Soil; rocky, 3rd and 4th rate.

Timber; spruce, hemlock and cottonwood.

Undergrowth; alder, willow and devil club.

---

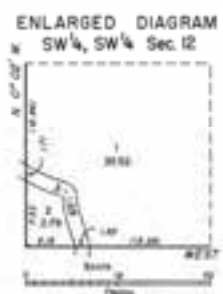
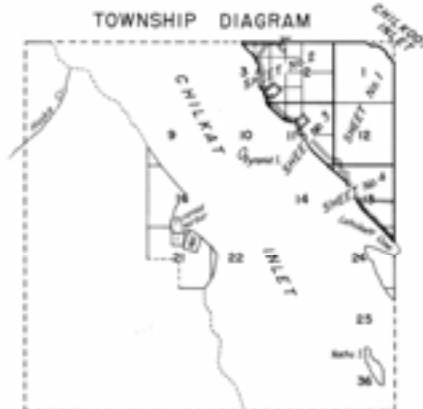
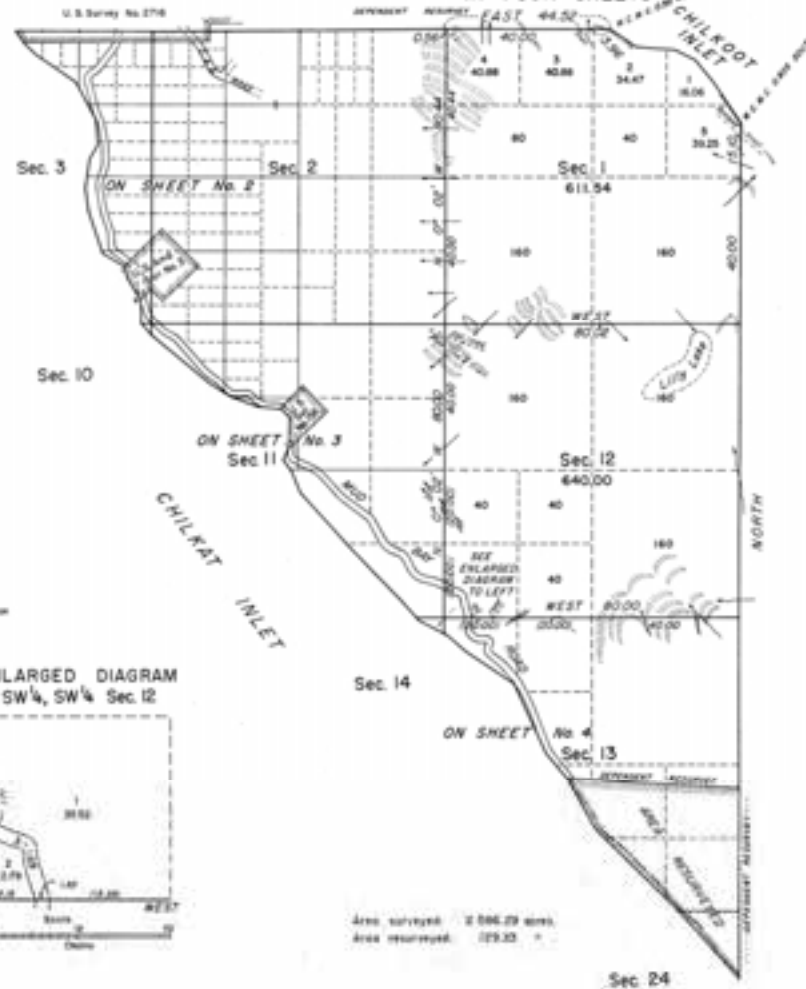
From the cor. of secs. 2, 3, 10 and 11, which is an iron post, 2 ins. dia., showing 12 ins. above ground, marked and witnessed as described in the official records of Boundaries of Group No. 12, Alaska.

N. 0° 03' W., on blank line bet. secs. 2 and 3.

Across Ft. Seward U.S. Military Reserve.

# TOWNSHIP 31 SOUTH, RANGE 59 EAST, OF THE COPPER RIVER MERIDIAN, ALASKA. IN FOUR SHEETS

Sheet No. 1



Area surveyed: 2 586.29 acres.  
Area returned: 179.25 "



Survey conducted by Jack C. Nease,  
Certified Engineer, May 13 to October 20,  
1920 under Special Authorization for Group  
74, Alaska, dated May 6, 1920.

This plat represents the survey of sec. 1,  
2, 3, 10, 11, 12 and 14, and a portion of sec. 13,  
with incidental resurveys and the subdivision of  
secs. 2, 9 and 12. The bearings and areas are as  
shown on the plat approved February 4, 1922, ex-  
cept an acre shown as shown herein.

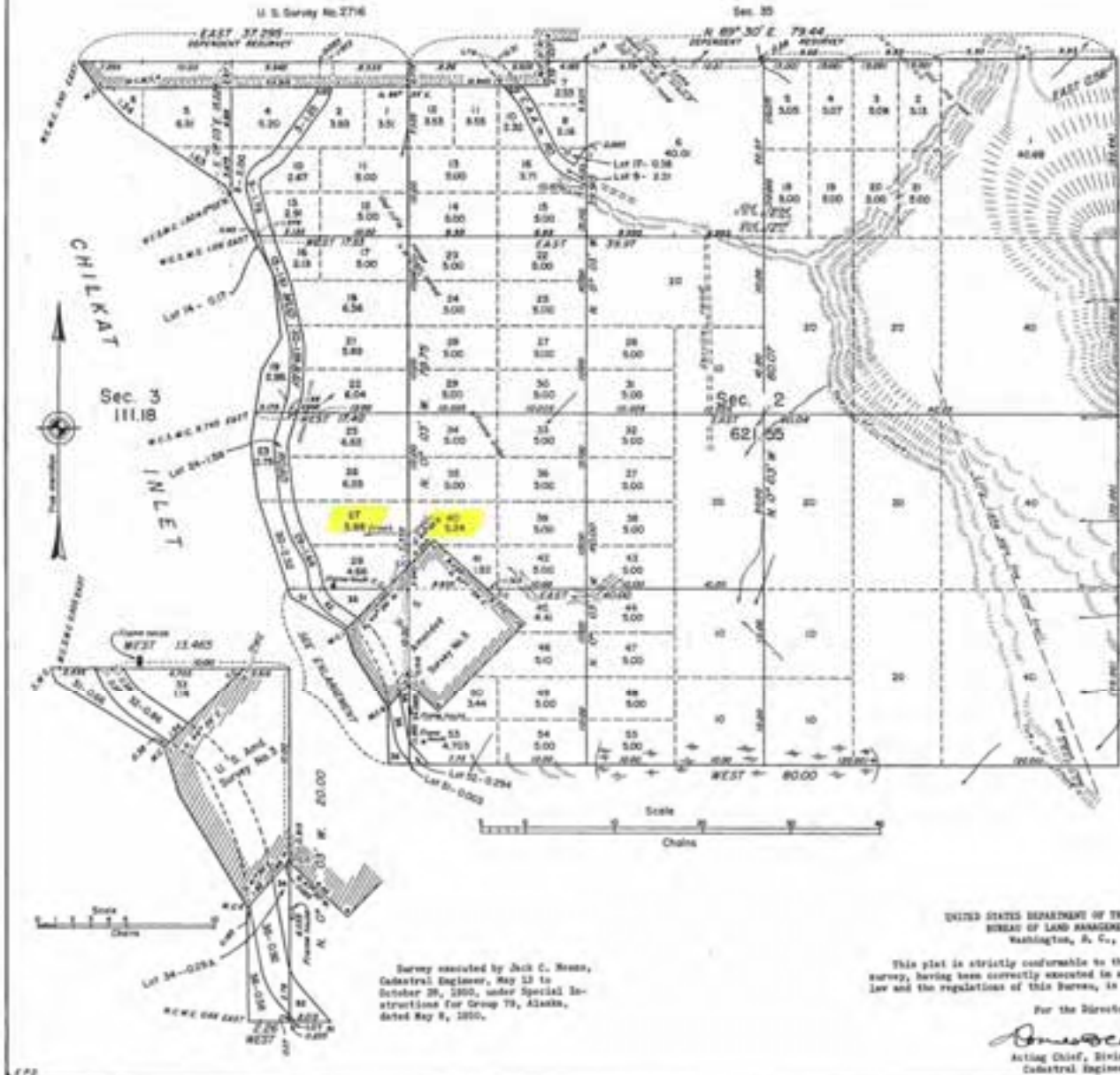
The area is heavily timbered. Spruce and  
hemlock are the predominating species with alder  
along the water-courses, some cottonwood along  
the shore and cranberry in the swampy areas.

UNITED STATES DEPARTMENT OF THE INTERIOR  
BUREAU OF LAND MANAGEMENT  
Washington, D. C., September 4, 1921

This plat is hereby conformable to the approved field notes,  
and the survey, having been correctly executed in accordance with the  
requirements of law and the regulations of this Bureau, is hereby  
accepted.

For the Director  
*[Signature]*  
Acting Chief, Division of  
Cadastral Engineering

# TOWNSHIP 31 SOUTH, RANGE 59 EAST, OF THE COPPER RIVER MERIDIAN, ALASKA. IN FOUR SHEETS



This plat represents the survey of secs. 1, 2, 3, 10, 11, 12 and 14, and a portion of sec. 13, with incidental reservations and the subdivision of secs. 2, 3 and 11. The lotlines and areas are as shown on the plat approved February 8, 1912, except no new areas are shown herein.

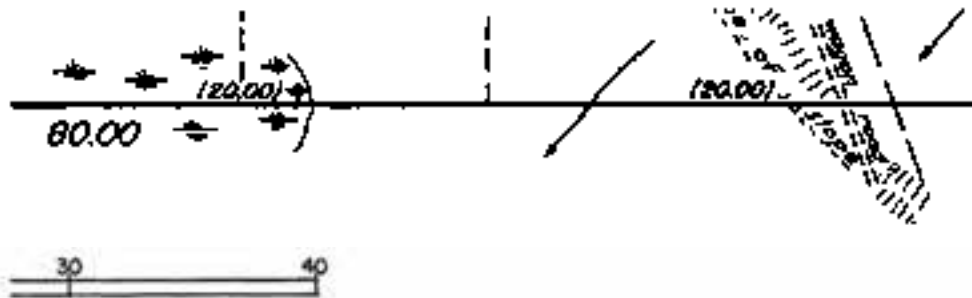
The area is heavily timbered. Spruce and hemlock are the predominating species, with alder along the water-courses, some cottonwood along the shore and sedge in the swampy areas.

Survey executed by Jack C. Swann, Cadastral Engineer, May 23 to October 20, 1905, under Special Instructions for Group 79, Alaska, dated May 8, 1905.

UNITED STATES DEPARTMENT OF THE INTERIOR  
BUREAU OF LAND MANAGEMENT  
Washington, D. C., September 9, 1912

This plat is strictly conformable to the approved field notes, and the survey, having been correctly executed in accordance with the requirements of law and the regulations of this Bureau, is hereby accepted.

For the Director  
*[Signature]*  
Acting Chief, Division of  
Cadastral Engineering



UNITED STATES DEPARTMENT OF THE INTERIOR  
BUREAU OF LAND MANAGEMENT  
Washington, D. C., September 9, 1952

This plat is strictly conformable to the approved field notes, and the survey, having been correctly executed in accordance with the requirements of law and the regulations of this Bureau, is hereby accepted.

For the Director

Acting Chief, Division of  
Cadastral Engineering

ABC  
77247

9/9/52 - USRS Plat Accepted

Dates of Entry:

5/28/54 - Lot 27, Section 3

3/29/58 - Lot 40, Section 2

Mining Law of 1866  
Congress granted

“The right-of-way for the construction of highways over the public lands **not reserved for public uses** is hereby granted.”

## Highway Rights-of-Way In Alaska

### Section Line Easement Determinations

In order for SLEs to exist, the survey establishing the section lines must have been approved or filed prior to entry on Federal lands or disposal of State or Territorial lands. The Federal lands must have been unreserved at some time subsequent to survey and prior to entry.

Surveyed Federal lands that were unreserved at any time during the indicated time period.	Effective Dates	Surveyed lands that were under State or Territorial ownership at any time during the indicated time period. (Note: includes un-surveyed lands after July 1, 1960)
none	April 5, 1923	None
66'	April 6, 1923 To January 17, 1949	66'
none	January 18, 1949 To March 25, 1951	none
	March 26, 1951 to March 20, 1953	100'
	March 21, 1953 to December 14, 1968	
66'	December 14, 1968 to Present	

Note: This table assumes the same land status on both sides of the section line. A review of the land status can result in total easement widths of 0', 33', 50', 66', 83', and 100'. A section line easement, once created by survey and accepted by the State, will remain in existence unless vacated by the proper authority.

The above table is from a 2013 paper by John F. Bennett, PLS, SR/WA titled "Highway Rights-of-Way in Alaska"

**US Department of the Interior  
Bureau of Land Management**

**Alaska Case Retrieval Enterprise System (ACRES)**

Historical Index Retrieval by MTR  
Meridian: C Township: 31S Range: 59E

Action Date	Section Aliq Part	Lots	Other Desc	Acres Qty	Document ID	Kind Entry	Remarks
20-Feb-1897	N/A (large school reservation in the area)		M&B		5	EO	WDL SCH PURP; CHILKAT; OTHER PARS; PART REV PLO 960 4/30/1954
<b>31-Dec-1898</b>	Created Ft. William H. Seward		M&B; 30S 59E CRM			<b>EO</b>	WDL MIL PURP; ENLGMT EO 11/21/1902; MOD EO 1067 4/23/1909; PART REV PLO 541 12/22/1948; REV PLO 960 4/30/1954
06-Apr-1901			USS 1 (AMDT)	25.4800	21	CE CERT	SEE AA 70890
28-Jun-1901			USS 156	9.4900	17	HE CERT	SEE AA 70807
20-Jan-1902			USS 3 (AMDT)	22.3300	22	T&M PAT	SEE AA 70843
21-Nov-1902	Added lands to Ft. Seward		M&B			<b>EO</b>	ENLGMT 12/31/1898 MIL RES; OTHER TPS; 30S 59E, 31S 60E CRM; MOD EO 1067 4/23/1909; PART REV EO 4131 1/22/1925; PART REV PLO 541 12/22/1948; REV PLO 960 4/30/1954
24-Aug-1904			USS 160 A	44.7300	31	HE CERT	SEE AA 70887
27-Nov-1905	N/A (water supply @ Ft. Seward)		M&B; 31S 58E CRM			EO	WDL MIL PURP; MOD EO 1067 4/23/1909; REV PLO 541 12/22/1948
23-Apr-1909	modified boundaries incorrectly described by prior EO's for Ft. Seward		M&B		1067	<b>EO</b>	MOD EO 12/31/1898, EO 11/21/1902, EO 11/27/1905 WDL MIL PURP; OTHER TPS; 30S 58,59E, 31S 58,60E CRM; PART REV EO 4131 1/22/1925; PART REV PLO 541 12/22/1948; REV PLO 960 4/30/1954
01-Apr-1924	N/A (Glacier Bay National Monument)		M&B		3983	EO	WDL PROP N MON; REV PROC 1733 2/26/1925
26-Feb-1925	N/A (Glacier Bay National Monument)		M&B; 31S 53E CRM		1733	PROC	REV EO 3983 4/1/1923 WDL PROP N MON

07-Mar-1947	25		2		1,7900	1120739	HE PAT	SEE A 10284
04-Apr-1947				USS 2716; TR A,B,C	386.6830		QCD FROM US	SEE AA 71376
22-Dec-1948	N/A	(Civil Aeronautics Admin site within Ft. Seward)		M&B		541	PLO	WDL CAA ANS 243; PART REV EO 12/31/1898 & EO 11/21/1902 WDL MIL AS MOD EO 1067 4/23/1909; REV EO 11/27/1905 WDL MIL PURP AS MOD EO 1067 4/23/1909; PLO 960 4/30/1954
24-Jul-1953	2	N/A (air navigation site)	7,9,17		7.3000	4	ANS WDL	ENLGMT PLO 960 4/30/1954; SEE AA 62925
18-Jan-1954	N/A	(air navigation site)		M&B		3	ANS WDL	AMDT TO ANS 4 2/10/1954; CORR TO ANS 5 4/7/1954; PLO 1712 REV ANS 5 7/3/1958; SEE AA 63423
30-Apr-1954				M&B		960	PLO	PART REV EO 5 2/20/1897 WDL SCH PURP; REV EO 12/31/1898 & EO 11/21/1902 WDL MIL PURP AS MOD EO 1067 4/23/1909; REV 541 12/22/1948 WDL CAA ANS 243
30-Apr-1954	1	SWNE, S2NW	1-5			960	PLO	
30-Apr-1954	1	SW, SE				960	PLO	
30-Apr-1954	2	SENE, E2SE, E2SWNE, E2W2SE, SWSWSE, SESESW				960	PLO	NOE RES ST CL; LOTS 1-3, 10-16, 20-50, 52-55 <i>Not open to Entry</i>
30-Apr-1954	2		51			960	PLO	
30-Apr-1954	2	N2SENW, SESENW, W2SWNE, E2NESW, W2NWSE, NESESW, NWSWSE	4- 6,18,19		170.1300	960	PLO	ENLGMT ANS 4 7/24/1953; PART REV PLO 5544 10/24/1975; PART REV PLO 5444 4/21/1980; PART REV PLO 6690 12/6/1988
30-Apr-1954	3					960	PLO	LOTS 1-3, 9-13, 15-18, 20-22, 24-29, 32-35
30-Apr-1954	3					960	PLO	WDL SEC OF INT FOR PROT OF SCENIC AREAS & REC PURP; LOTS 4-8,14,19,23,30,31,36
30-Apr-1954	10		1			960	PLO	
30-Apr-1954	11		6,17,18	30S 59E CRM	38.6600	960	PLO	WDL SEC OF INT FOR PROT OF SCENIC AREAS & REC PURP; PART REV PLO 2754 8/13/1962
30-Apr-1954	11	E2NE	1-5, 7- 16, 19- 30	NENENW		960	PLO	



30-Apr-1954	12	NE, NW, SE		31S 60E CRM	962.6100	960	PLO	WDL SEC OF INT FOR PROT OF WATER SUPPLY; PART REV PLO 2754 8/13/1962
30-Apr-1954	12	E2SW, NWSW	1-3			960	PLO	
30-Apr-1954	13	NE	5-15			960	PLO	
30-Apr-1954	14		1	30S 59E CRM		960	PLO	NOE RES ST CL; PART REST ST CL 82 5/14/1954; REST ST CL J 00008 4/24/1961
14-May-1954	2					82	ST CL	LOTS 10-16, 22-50, 53-55
14-May-1954	3					82	ST CL	LOTS 1, 2, 10-13, 16-18, 21, 22, 25-28, 33, 34
14-May-1954	11			30S 59E CRM		82	ST CL	LOTS 2-4, 8-11, 13; NENENW; CANC 8/22/1960
13-Apr-1955				M&B; CHILKCAT	1.1000	1116	PLO	REV EQ 2-20-1897 WDL SCH PURP & REST TO ENTRY: OTHER PARS
12-Jul-1955	24		3		13.3900	1152913	HE PAT	SEE A 11792
20-Jan-1956	13		1-4			6	SS CLEAR LIST	
20-Jan-1956	21	W2NW, W2SE, NESE	4-6			6	SS CLEAR LIST	
20-Jan-1956	24	NESE	2,4,5		3131.1000	6	SS CLEAR LIST	OTHER TPS; 32S 59,50E, 31S 60E CRM, 16N 3W, 14N 4W SM; SEE A 022211
03-Apr-1956	3		28		4.6600	1158599	ST PAT	SEE A 26846
23-Nov-1956	2		53		4.7030	1166775	ST PAT	SEE A 26877
23-Nov-1956	3		33		1.1400	1166776	ST PAT	SEE A 26884
22-Jan-1957	11		13		3.2000	1168347	ST PAT	SEE A 26844
23-Jan-1957	11		4		2.4800	1168376	ST PAT	SEE A 26845
28-Jan-1957	11		11		2.3700	1168447	ST PAT	SEE A 26955
04-Mar-1957	2		50		3.4400	1169130	ST PAT	SEE A 26840
04-Mar-1957	3		34		0.2900	1169130	ST PAT	SEE A 26840
07-Mar-1958	3		27		5.9800	1180120	ST PAT	SEE J 10241
03-Apr-1958	2		54		5.0000	1180894	ST PAT	SEE J 10473
22-Apr-1958	3		17		5.0000	1181491	ST PAT	SEE J 10299
01-May-1958	2		23		5.0000	1181864	ST PAT	SEE J 11111

01-May-1958	2	29		5.0000	1181865	ST PAT	SEE J 11112
19-May-1958	2	34		5.0000	1182393	ST PAT	SEE J 10412
19-May-1958	11	3		5.0000	1182397	ST PAT	SEE J 10621
19-May-1958	3	22		6.0400	1182400	ST PAT	SEE J 10932
21-May-1958	3	16		2.1300	1182448	ST PAT	SEE J 10317
21-May-1958	2	40		5.2400	1182455	ST PAT	SEE J 11114
17-Jun-1958	3	10		2.6700	1183138	ST PAT	SEE J 10245
17-Jun-1958	11	9		5.0000	1183145	ST PAT	SEE J 11115
03-Jul-1958			M&B	12.2500	1712	PLO	REV ANS 5 4/7/1954
23-Sep-1958	3	18		6.3600	1186473	ST PAT	SEE J 10278
17-Oct-1958	3	13		2.9100	1187489	ST PAT	SEE J 10272
10-Nov-1958	11	10		5.0000	1188043	ST PAT	SEE J 11116
26-Nov-1958	2	39		5.0000	1188363	ST PAT	SEE J 10620
02-Feb-1959	11	8		4.5800	1191939	ST PAT	SEE J 10247
02-Jun-1959	3	25		6.6200	1196078	ST PAT	SEE J 10258
24-Jun-1959	3	12		5.0000	1196699	ST PAT	SEE J 10316
24-Jun-1959	3	11		5.0000	1196700	ST PAT	SEE J 10318
20-Oct-1959	2	45		4.4100	1200430	ST PAT	SEE J 10805
29-Oct-1959	3	21		5.8900	1201052	ST PAT	SEE J 11155
12-Nov-1959	2	42		5.0000	1201792	ST PAT	SEE J 10894
25-Nov-1959	3	26		6.5500	1202148	ST PAT	SEE J 10256
25-Nov-1959	2	14		5.0000	1202156	ST PAT	SEE J 11779
25-Nov-1959	2	24		5.0000	1202157	ST PAT	SEE J 11781

[Public Land Order 666]

ALASKA

REPEALING EXECUTIVE ORDERS OF DECEMBER 21, 1922, NOVEMBER 20, 1923, AND NO. 1087 OF APRIL 23, 1928, AND PUBLIC LAND ORDERS NO. 341, OF DECEMBER 23, 1940; PARTIALLY REPEALING EXECUTIVE ORDER NO. 4, OF FEBRUARY 20, 1927; RESERVING PORTIONS OF THE RELEASED LANDS FOR CERTAIN PUBLIC PURPOSES

By virtue of the authority vested in the President and pursuant to Executive Order No. 10755 of May 26, 1952, and section 4 of the act of May 24, 1926 (45 Stat. 729; 43 U. S. C. 2161), it is ordered as follows:

1. Executive Order No. 4 of February 20, 1927, so far as it reserved for school purposes approximately one acre of public land at Chikot (Haines), is hereby revoked.

(a) The Executive Order of December 21, 1922, reserving public lands for military purposes at Haines; the Executive Order of November 21, 1923, enlarging said military reserve; and Executive Order No. 1087 of April 23, 1928, re-describing its boundaries, are hereby revoked.

(b) Public Land Order No. 341 of December 23, 1940, establishing Air Navigation Site No. 263 is hereby revoked.

2. Subject to valid existing rights, the following described tracts of public land included in the revocations made by this order, are hereby withdrawn from all forms of appropriation under the public-land laws, including the mining laws but not the mineral-leasing laws, and reserved as follows:

(A) Under the jurisdiction of the Secretary of Commerce, for use by the Civil Aeronautics Administration as an addition to Alaska Air Navigation Site Withdrawal No. 4:

Corvus Narva Massena

T. 21 S., R. 20 E.,  
Sec. 2, lots 1, 2, 3, 12 and 13, NW<sup>1</sup>/<sub>4</sub>, NW<sup>2</sup>/<sub>4</sub>,  
SE<sup>1</sup>/<sub>4</sub>, SW<sup>1</sup>/<sub>4</sub>, NW<sup>1</sup>/<sub>4</sub>, W<sup>1</sup>/<sub>2</sub>, NW<sup>1</sup>/<sub>4</sub>, NE<sup>1</sup>/<sub>4</sub>, NW<sup>1</sup>/<sub>4</sub>,  
SW<sup>1</sup>/<sub>4</sub>, W<sup>1</sup>/<sub>2</sub>, NW<sup>1</sup>/<sub>4</sub>, NE<sup>1</sup>/<sub>4</sub>, SE<sup>1</sup>/<sub>4</sub>, NW<sup>1</sup>/<sub>4</sub>,  
NW<sup>1</sup>/<sub>4</sub>, SW<sup>1</sup>/<sub>4</sub>, NE<sup>1</sup>/<sub>4</sub>.

The area described contains 159.13 acres.

(B) Under the jurisdiction of the Secretary of the Interior for the protection of the water supply of the City of Haines and the town of Port Chikot:

Corvus Narva Massena

T. 21 S., R. 20 E.,

Sec. 1, NW<sup>1</sup>/<sub>4</sub>;

Sec. 12, NE<sup>1</sup>/<sub>4</sub>, SW<sup>1</sup>/<sub>4</sub>;

T. 21 S., R. 20 E.,

Sec. 2, lots 3 and 4;

Sec. 3, lots 1, 2, 3 and 4.

The area described contains 962.81 acres.

(C) Under the jurisdiction of the Secretary of the Interior for the protection and preservation of scenic areas and for recreational purposes:

Corvus Narva Massena

T. 20 S., R. 20 E.,

Sec. 22, lot 1.

T. 21 S., R. 20 E.,

Sec. 2, lots 4 to 8, inclusive, lots 14, 15, 22,  
24, 25, and 26;

Sec. 3, lot 21;

Sec. 10, lot 1;

Sec. 11, lots 6, 7, and 18.

The area described contains 28.58 acres.

3. Except as to their release from withdrawal by paragraph 1 hereof, the status of the following described lands shall not be changed until it is so provided by an order of classification to be issued by the Regional Administrator, Bureau of Land Management, Anchorage, Alaska, upon the lands so application under the Small Tract Act of June 1, 1928 (42 Stat. 609; 43 U. S. C. 822a), as amended, with a thirty-one day preference right period for filing such applications by veterans of World War II and others entitled to preference under the act of September 27, 1944 (58 Stat. 747; 43 U. S. C. 279-284):

Corvus Narva Massena

T. 20 S., R. 20 E.,

Sec. 23, lots 2 to 18, inclusive;

Sec. 24, lots 1 to 7, inclusive.

T. 21 S., R. 20 E.,

Sec. 1, lots 1 to 8, inclusive, SW<sup>1</sup>/<sub>4</sub>, NW<sup>1</sup>/<sub>4</sub>,  
SW<sup>1</sup>/<sub>4</sub>, NW<sup>1</sup>/<sub>4</sub>;

Sec. 2, lots 1, 2, and 3, lots 10 to 18, inclusive,  
lots 20 to 22, inclusive, lots 23 to 25,  
inclusive, SW<sup>1</sup>/<sub>4</sub>, NW<sup>1</sup>/<sub>4</sub>, SE<sup>1</sup>/<sub>4</sub>, NE<sup>1</sup>/<sub>4</sub>,  
W<sup>1</sup>/<sub>2</sub>, NW<sup>1</sup>/<sub>4</sub>, SW<sup>1</sup>/<sub>4</sub>, SE<sup>1</sup>/<sub>4</sub>, NW<sup>1</sup>/<sub>4</sub>, SW<sup>1</sup>/<sub>4</sub>, NW<sup>1</sup>/<sub>4</sub>,  
SE<sup>1</sup>/<sub>4</sub>, NE<sup>1</sup>/<sub>4</sub>, SW<sup>1</sup>/<sub>4</sub>;

Sec. 3, lots 1, 2, and 3, lots 2 to 12, inclusive,  
lots 13 to 18, inclusive, lots 20, 21,  
and 22, lots 26 to 29, inclusive, lots 30  
to 32, inclusive;

Sec. 11, lots 1 to 2, inclusive, 7 to 12, inclusive,  
lots 19 to 20, inclusive, SW<sup>1</sup>/<sub>4</sub>, NE<sup>1</sup>/<sub>4</sub>,  
NW<sup>1</sup>/<sub>4</sub>, SW<sup>1</sup>/<sub>4</sub>, NW<sup>1</sup>/<sub>4</sub>;

Sec. 12, lots 1, 2, and 3, SW<sup>1</sup>/<sub>4</sub>, NW<sup>1</sup>/<sub>4</sub>,  
SW<sup>1</sup>/<sub>4</sub>, NW<sup>1</sup>/<sub>4</sub>;

Sec. 15, lots 2 to 12, inclusive, NW<sup>1</sup>/<sub>4</sub>;

Sec. 18, lot 1.

T. 21 S., R. 20 E.,

Sec. 4, lot 1;

Sec. 7, lots 4, 5, and 7;

Sec. 8, lot 11;

Sec. 17, lots 4 to 7, inclusive, SW<sup>1</sup>/<sub>4</sub>, NW<sup>1</sup>/<sub>4</sub>;

Sec. 18, lots 8 to 11, inclusive, SW<sup>1</sup>/<sub>4</sub>, NW<sup>1</sup>/<sub>4</sub>,  
SW<sup>1</sup>/<sub>4</sub>.

The area described contains 2,201.33 acres.

4. A tract of land containing 7.28 acres released from withdrawal by this order, is included in Air Navigation Site Withdrawal No. 4 of the Regional Administrator, Bureau of Land Management, Anchorage, of July 24, 1953. The interest of the United States in a tract of

287.58 acres released from withdrawal by the order, U. S. Survey No. 2710 formerly a part of Fort Seward, was relinquished by deed of April 4, 1947, pursuant to the provisions of the Federal Property and Administrative Services Act of 1949, as amended.

5. Inquiries concerning the lands described in paragraph 3 of this order shall be addressed to the Regional Administrator, Region VII, Bureau of Land Management, Anchorage, Alaska.

1347  
PLO-960  
4-30-54

Corvus Narva,  
Assistant Secretary of the Interior,  
April 20, 1954.  
[P. S. Doc. 46-3428, Filed May 7, 1954]

[Public Land Order 960]

ALASKA

REVOKING EXECUTIVE ORDERS OF DECEMBER 31, 1898, NOVEMBER 21, 1902, AND NO. 1067 OF APRIL 23, 1909, AND PUBLIC LAND ORDER NO. 541, OF DECEMBER 22, 1948; PARTIALLY REVOKING EXECUTIVE ORDER NO. 8, OF FEBRUARY 20, 1897; RESERVING PORTIONS OF THE RELEASED LANDS FOR CERTAIN PUBLIC PURPOSES

By virtue of the authority vested in the President and pursuant to Executive Order No. 10355 of May 26, 1952, and section 4 of the act of May 24, 1928 (45 Stat. 729; 49 U. S. C. 214), it is ordered as follows:

1. Executive Order No. 8 of February 20, 1897, so far as it reserved for school purposes approximately one acre of public land at Chilkat (Haines), is hereby revoked.

(a) The Executive Order of December 31, 1898, reserving public lands for military purposes at Haines; the Executive Order of November 21, 1902, enlarging said military reserve; and Executive Order No. 1067 of April 23, 1909, re-describing its boundaries, are hereby revoked.

(b) Public Land Order No. 541 of December 22, 1948, establishing Air Navigation Site No. 243 is hereby revoked.

2. Subject to valid existing rights, the following described tracts of public land included in the revocations made by this order, are hereby withdrawn from all forms of appropriation under the public-land laws, including the mining laws but not the mineral-leasing laws, and reserved as follows:

(a) Under the jurisdiction of the Secretary of Commerce, for use by the Civil Aeronautics Administration as an addi-

3. Except as to their release from withdrawal by paragraph 1 hereof, the status of the following described lands shall not be changed until it is so provided by an order of classification to be issued by the Regional Administrator, Bureau of Land Management, Anchorage, Alaska, opening the lands to application under the Small Tract Act of June 1, 1938 (52 Stat. 609; 43 U. S. C. 682a), as amended, with a ninety-one day preference right period for filing such applications by veterans of World War II and others entitled to preference under the act of September 27, 1944 (58 Stat. 747; 43 U. S. C. 279-284):

COPPER RIVER MERIDIAN

T. 30 S., R. 59 E.

Sec. 35, lots 2 to 19, inclusive;

Sec. 36, lots 1 to 7, inclusive.

T. 31 S., R. 59 E.

Sec. 1, lots 1 to 8, inclusive, S $\frac{1}{2}$ NW $\frac{1}{4}$ , SW $\frac{1}{4}$ NE $\frac{1}{4}$ ;

Sec. 2, lots 1, 2, and 3, lots 10 to 16, inclusive, lots 20 to 50, inclusive, lots 52 to 55, inclusive, E $\frac{1}{2}$ SW $\frac{1}{4}$ NE $\frac{1}{4}$ , SE $\frac{1}{4}$ NE $\frac{1}{4}$ , E $\frac{1}{2}$ W $\frac{1}{2}$ SE $\frac{1}{4}$ , E $\frac{1}{2}$ SE $\frac{1}{4}$ , SW $\frac{1}{4}$ SW $\frac{1}{4}$ SE $\frac{1}{4}$ , SE $\frac{1}{4}$ SE $\frac{1}{4}$ SW $\frac{1}{4}$ ;

Sec. 3, lots 1, 2, and 3, lots 9 to 13, inclusive, lots 15 to 18, inclusive, lots 20, 21, and 22, lots 24 to 29, inclusive, lots 32 to 35, inclusive;

PLO-960  
4-30-54

ALASKA  
BUREAU OF LAND MANAGEMENT ORDER NO. 211  
AND SMALL TRACT CLASSIFICATION NO. 21

MAY 14, 1954.

By virtue of the authority contained in the act of June 5, 1938 (43 Stat. 1859; 48 U. S. C. 372), and pursuant to Delegation of Authority contained in sections

221 and 222 (a) (7) of Order No. 1, Bureau of Land Management, Area IV, approved by the Acting Secretary of the Interior on August 20, 1951 (16 F. R. 8525), it is ordered as follows:

1. Subject to valid existing rights, the 80-acre shorepage reserve which is now or may hereafter be created under the act of May 14, 1928 (30 Stat. 429; 48 U. S. C. 271), as amended, is hereby revoked as to the public lands hereinafter described, which are situated in the Anchorage, Alaska Land District and which are hereby classified as chiefly valuable for lease and sale under the Small Tract Act of June 1, 1938 (52 Stat. 609; 43 U. S. C. 382a), as amended:

NEARBY-PORT CHILKOOT SMALL TRACT AREA  
FOR LEASE AND SALE  
For Cabin Sites

- T. 50 S. R. 22 E., CRM  
Sec. 21:  
Lot 2  
Lots 1-10, inclusive;  
Lots 12-18, inclusive.  
T. 51 S. R. 22 E., CRM,  
Sec. 2:  
Lots 12-18, inclusive;  
Lots 20-26, inclusive;  
Lots 28, 34 and 35.  
Sec. 3:  
Lots 1 and 2;  
Lots 10-12, inclusive;  
Lots 14, 17, 18, 21, 23;  
Lots 25-28, inclusive;  
Lots 32 and 34.  
Sec. 11:  
Lots 2, 3, and 4;  
Lots 8-11, inclusive;  
Lot 12;  
MAYHEW, HWIG.

Comprising 81 tracts aggregating approximately 324.28 acres.

These lots are located immediately south and east of Port Chilkoot, Alaska, and most tracts can be reached by one of four roads serving the area. The terrain varies from level to very steep and rough.

The easternmost tracts are covered with a heavy stand of mature Sitka spruce and some have frontage on Portage Cove. A thick stand of birch reproduction and small Sitka spruce makes up the forest cover over the remaining tracts. Many of the lots offer spectacular views of glacial and mountain scenery. The summer climate features mild temperatures and heavy precipitation but unlike most of Southeast Alaska the winters are cold enough to produce a very heavy snowfall. Sewage disposal can be accomplished on individual tracts through septic tanks or cesspools and drinking water supplies can be obtained from hand dug or drilled wells. Most community facilities are available in Port Chilkoot, Haines and Skagway, which is 12 miles northeast by air. However, residents must sail or fly the 72 miles south to Juneau to obtain most professional services.

1350  
55R-511  
STC 52  
9/1/54

2. This classification order shall not otherwise become effective to change the status of any lands described herein or to permit the leasing of any such lands under the Small Tract Act of June 1, 1938, cited above, until 11:00 a. m., on June 8, 1954.

At that time the lands described above shall, subject to valid existing rights and the provisions of existing withdrawal, become subject to application, petition, location and selection, as follows:

(a) Ninety-one day period for preference right filings. For a period of 91 days from 10:00 a. m. on June 8, 1954, to close of business on September 8, 1954, inclusive, preference will be given, as set forth above, to:

(1) Applications under the Small Tract Act of June 1, 1938 (52 Stat. 609; 43 U. S. C. 382a), as amended, by qualified veterans of World War II and other qualified persons entitled to preference under the act of September 27, 1944 (58 Stat. 747; 43 U. S. C. 279-284), as amended, subject to the requirements of applicable law, and

(2) Applications under any applicable public land law, based on prior existing valid settlement rights and preference rights conferred by existing laws or equitable claims subject to allowance and confirmation. Application by veterans and other qualified persons under subdivision (1) of this paragraph shall be subject to applications and claims of the classes described in subdivision (2) of this paragraph.

(b) Advance period for simultaneous non-preference right filings. All applications filed by such veterans and other qualified persons or by persons claiming preference rights superior to those of such veterans filed under the preceding paragraph (a) on May 13, 1954, or thereafter, up to and including 10:00 a. m. on June 8, 1954, shall be treated as simultaneously filed. All applications filed under the preceding paragraph (a) after 10:00 a. m. on June 8, 1954, shall be considered in the order of filing.

(c) Date for non-preference right filings. Commencing at 10:00 a. m. on September 7, 1954, any lands remaining unappropriated shall become subject to application under the Small Tract Act by the public generally.

(d) Advance period for simultaneous non-preference right filings. Applications under the Small Tract Act by the general public filed on August 17, 1954, or thereafter, up to and including 10:00 a. m. on September 7, 1954, shall be treated as simultaneously filed. All applications filed thereafter shall be considered in the order of filing.

3. A veteran shall accompany his application with a complete photostatic, or other copy (both sides), of his certificate of honorable discharge, or of an official document of his branch of the service which shows clearly his honorable discharge as defined in § 151.26 of Title 43 of the Code of Federal Regulations, or which constitutes evidence of other facts upon which the claim for preference is based and which shows clearly the period of service. Other persons claiming credit for service of veterans must furnish like proof in support of their claim. Persons asserting preference rights, through settlement or otherwise, and those having equitable claims, shall accompany their applications by duly corroborated statements in support thereof, setting forth in detail all facts relevant to their claims.

4. All applications for these lands, which shall be filed in the Land Office at Anchorage, Alaska, shall be made on form 4-778 and shall be acted upon in accordance with the regulations contained in § 285.8 of Title 43 of the Code of Federal Regulations to the extent that such regulations are applicable. Applications under the Small Tract Act of June 1, 1938, shall be governed by the regulations contained in Part 207 of Title 43 of the Code of Federal Regulations.

5. Lessees under the Small Tract Act of June 1, 1938 will be required, within a reasonable time after execution of the lease, to construct upon the leased land, to the satisfaction of the appropriate officer of the Bureau of Land Management authorized to sign the lease, improvements which, under the circumstances, are substantial, and are appropriate for the use for which the lease is issued. Lessees will be issued for a period of two years, at an annual rental of \$3 for cabin sites, payable in advance for the entire lease period. Applications for extension for an additional period of one year shall be considered in appropriate cases. Every lease for land classified for lease and sale will contain an option to purchase clause and every such lessee may file an application to purchase at the sale price as provided in the lease.

6. All of the land will be leased in tracts varying in size from approximately 1.14 acres to approximately 7.43 acres, in accordance with the classification maps on file in the Land Office, Anchorage, Alaska. These tracts are appraised at prices ranging from \$50 to \$815.

7. Lessees must locate any wells or sewage disposal facilities in accordance with the laws and regulations of the Territory of Alaska.

8. The leases will be made subject to rights-of-way for road purposes and public utilities, as specified in the Classification and Appraisal Report on file in the Land Office, Anchorage, Alaska. Such rights-of-way may be utilized by

the Federal Government, State, Territory, County, or Municipality, or by any agency thereof. In the discretion of the authorized officer of the Bureau of Land Management, these rights-of-way may be definitely located prior to the issuance of the patent. If not so located, they may be subject to location after patent is issued.

FRED J. WALKER,  
Chief,  
Division of Land Planning.  
(F. R. Doc. 24-5872; Filed, May 18, 1954;  
745 8145 a. m.)

Approved by the Acting Secretary of the Interior on August 30, 1951 (16 F. R. 8625), it is ordered as follows:

1. Subject to valid existing rights, the 80-red shorespace reserve which is now or may hereafter be created under the act of May 14, 1938 (30 Stat. 409; 48 U. S. C. 371), as amended, is hereby revoked as to the public lands hereinafter described, which are situated in the Anchorage, Alaska Land District and which are hereby classified as chiefly valuable for lease and sale under the Small Tract Act of June 1, 1938 (52 Stat. 809; 43 U. S. C. 832a), as amended:

**HAINEE-PORT CHILKOOT SMALL TRACT AREA**  
FOR LEASE AND SALE  
For Cabin Sites

T. 30 S., R. 22 E., CRM  
Sec. 25:  
Lot 2;  
Lots 4-10, inclusive;  
Lots 13-15, inclusive;  
T. 31 S., R. 22 E., CRM,  
Sec. 21:  
Lots 16-18, inclusive;  
Lots 21-23, inclusive;  
Lots 25, 26 and 28.  
Sec. 2:  
Lots 1 and 2;  
Lots 10-13, inclusive;  
Lots 16, 17, 18, 21, 22;  
Lots 25-28, inclusive;  
Lots 29 and 34.  
Sec. 11:  
Lots 2, 3, and 4;  
Lots 8-11, inclusive;  
Lot 13;  
NE $\frac{1}{4}$ , NE $\frac{1}{4}$ , NW $\frac{1}{4}$ .

Comprising 82 tracts aggregating approximately 384.36 acres.

These lots are located immediately south and east of Port Chilkoot, Alaska, and most tracts can be reached by one of four roads serving the area. The terrain varies from level to very steep and rough.

The easternmost tracts are covered with a heavy stand of mature Sitka spruce and some have frontage on Portage Cove. A thick stand of birch reproduction and small Sitka spruce makes up the forest cover over the remaining tracts. Many of the lots offer spectacular views of glacial and mountain scenery. The summer climate features mild temperatures and heavy precipitation but unlike most of Southeast Alaska the winters are cold enough to produce a very heavy snowfall. Sewage disposal can be accomplished on individual tracts through

2. This classification order shall not otherwise become effective to change the status of any lands described herein or to permit the leasing of any such lands under the Small Tract Act of June 1, 1938, cited above, until 10:00 a. m., on June 8, 1954.

At that time the lands described above shall, subject to valid existing rights and the provisions of existing withdrawals, become subject to application, petition, location and selection, as follows:

(a) *Ninety-one day period for preference right filings.* For a period of 91 days from 10:00 a. m. on June 8, 1954, to close of business on September 8, 1954, inclusive, preference will be given, as set forth above, to:

(1) Applications under the Small Tract Act of June 1, 1938 (52 Stat. 809; 43 U. S. C. 832a), as amended, by qualified veterans of World War II and other qualified persons entitled to preference under the act of September 27, 1944 (58 Stat. 747; 43 U. S. C. 276-284), as amended, subject to the requirements of applicable law, and

(2) Applications under any applicable public land law, based on prior existing valid settlement rights and preference rights conferred by existing laws or equitable claims subject to allowance and confirmation. Application by veterans and other qualified persons under subdivision (1) of this paragraph shall be subject to applications and claims of the classes described in subdivision (2) of this paragraph.

(b) *Advance period for simultaneous preference right filings.* All applications filed by such veterans and other qualified persons, or by persons claiming preference rights superior to those of such veterans filed under the preceding paragraph (a) on May 18, 1954, or thereafter, up to and including 10:00 a. m. on June 8, 1954, shall be treated as simultaneously filed. All applications filed under the preceding paragraph (a) after 10:00 a. m. on June 8, 1954, shall be considered in the order of filing.

(c) *Date for non-preference right filings.* Commencing at 10:00 a. m., on September 7, 1954, any lands remaining unappropriated shall become subject to application under the Small Tract Act by the public generally.

(d) *Advance period for simultaneous non-preference right filings.* Applications under the Small Tract Act by the general public filed on August 17, 1954, or thereafter, up to and including 10:00 a. m. on September 7, 1954, shall be treated as simultaneously filed. All applications filed thereafter shall be considered in the order of filing.

3. A veteran shall accompany his application with a complete photostatic, or other copy (both sides), of his certificate of honorable discharge, or of an official document of his branch of the service which shows clearly his honorable discharge as defined in § 181.36 of Title 43 of the Code of Federal Regulations, or which constitutes evidence of other facts upon which the claim for preference is based and which shows clearly the period of service. Other persons claiming credit for service of veterans must furnish like proof in support of their claim. Persons asserting preference rights, through settlement or otherwise, and those having equitable claims, shall accompany their applications by duly corroborated statements in support thereof, setting forth in detail all facts relevant to their claims.

4. All applications for these lands, which shall be filed in the Land Office at

the Federal Government, State, Territory, County, or Municipality, or by any agency thereof. In the discretion of the authorized officer of the Bureau of Land Management, these rights-of-way may be definitely located prior to the issuance of the patent. If not so located, they may be subject to location after patent is issued.

FRED J. WELER,  
Chief,

Division of Land Planning.

[F. R. Doc. 84-3877] Filed, May 19, 1954  
748 8:48 a. m.]

# Summary -- Timeline

- ▶ **December 31, 1898** - Executive Order of December 31, 1898 reserved public lands for military purposes in the Haines (i.e. Fort William H. Seward).
- ▶ **November 2, 1902** - . Executive Order of November 2, 1902 added lands to the Ft. Seward reservation.
- ▶ **April 23, 1909** - Executive Order of April 23, 1909 modified boundaries incorrectly described in prior EO's for Ft. Seward.
- ▶ **September 9, 1952** - USRS Plat that surveyed Sections 2 & 3, T31S, R59E, CRM accepted.
- ▶ **April 30, 1954** - Public Land Order No. 960 revoked Executive Orders of December 31, 1898; November 2, 1902 & April 23, 1909.
- ▶ **May 14, 1954** - Small Tracts Classification Order No. 82 reclassified subject lands for lease or sale under the Small Tracts Act of June 1, 1938. These lands became unappropriated, subject to the following:
  - ▶ May 18, to 10:00am June 8, 1954 - Advance period for simultaneous preference right filings.
- ▶ **May 28, 1954 - Date of Entry - Lot 27, Section 3 - no section-line easement exists**
  - ▶ August 17, to 10:00am September 7, 1954 - Advance period for simultaneous non-preference right filings.
  - ▶ September 7, 1954 - Date for non-preference right filings ended.

*This is the date the subject lands became unappropriated and unreserved!*
- ▶ **March 29, 1958 - Date of Entry - Lot 40, Section 2**
  - ▶ Pursuant to Ch. 35, SLA 1953 a 33' section-line easement exists