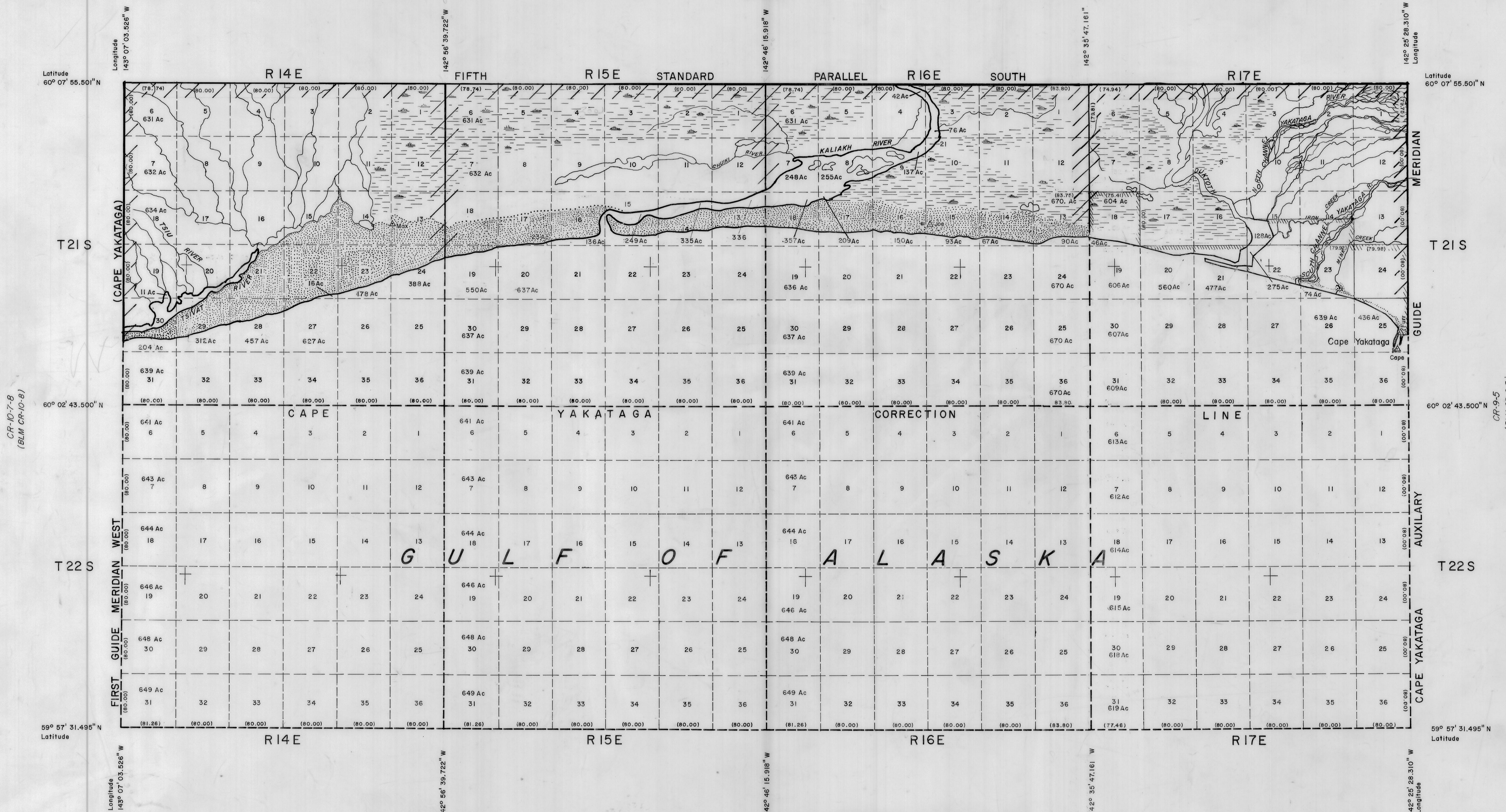

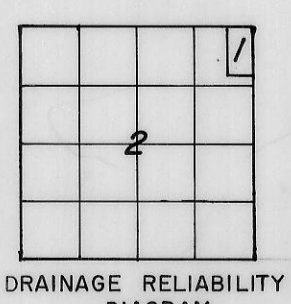


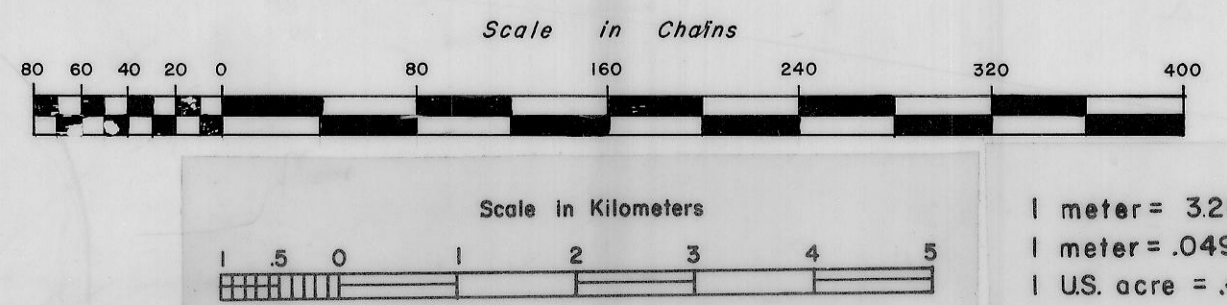
TOWNSHIPS 21 AND 22 SOUTH, RANGES 14 TO 17 EAST, COPPER RIVER MERIDIAN, ALASKA
PROTRACTED (UNSURVEYED)



 Surveved. See official plats for areas.
 Unless otherwise shown each section contains 640 acres.
 Water areas shown are computed by planimetric means to nearest five acres only.
 Topography based upon U.S.G.S. quadrangle I:250,000 Bering Glacier and U.S.G.S. quadrangle I:63,360 Bering Glacier (A-4).



1. TOPOGRAPHY FROM U.S.G.S. QUADRANGLE I:63,360 SERIES.
2. TOPOGRAPHY FROM U.S.G.S. QUADRANGLE I:250,000 SERIES.



1/3/80	Revisions re Cape Yakataga Correction Line	ED	
1/5/79	Added Twp. Sur. Line for T21S, R14E, T21S, R15E and T21S, R16E	RLG	gd. <i>ML</i>
1/4/79	Added Twp. Sur. Line for T21S, R17E	RLG	gd. <i>ML</i>
DATE	REVISION	BY	CKD APPRD

STATE OF ALASKA
DEPARTMENT OF NATURAL RESOURCES
DIVISION OF LANDS
ANCHORAGE, ALASKA

GRID NO. CR-10-9

DRWN. BY J. F. S.
November 24, 1969

APPROVAL RECOMMENDED: *[Signature]*
APPROVED: *[Signature]*
DATE APPROVED: 12/14/72
CHECKED: *[Signature]*

SCALE: 1" = 1 mile