

MEMORANDUM OF UNDERSTANDING
BETWEEN
THE STATE OF ALASKA AND THE UNITED STATES
ON
THE SURVEY OF ALASKA STATE SELECTIONS

This understanding is between the State of Alaska represented by the Commissioner of Natural Resources hereinafter called the State and the United States represented by the Secretary of the Interior hereinafter called the Secretary.

In areas where the State selects tracts of one or more townships in size, the Secretary has surveyed, and will continue to survey, the selected lands in units of full townships and monumentation at an average of two miles around the perimeter of such townships, unless the State, in the interest of expediting the survey of selected areas, elects (a) to have surveys made of the perimeters of larger reasonably compact tracts or (b) to have monumentation at an average of more than two miles around the perimeter of full townships of the larger tracts or (c) both. If the State elects to have monumentation at an average of more than two miles, the Secretary will monument the perimeter consistent with the average specified by the State, except where the Secretary determines that additional monumentation is needed for public purposes other than transfer of title to the State selection involved.

Angle points as shown on approved protraction diagrams of State Selected tracts may, on agreement of the Secretary and the State, be defined by latitudes and longitudes. Perimeter angle points that can be identified but are not defined on protraction

diagrams by latitudes and longitudes will be calculated and shown on the approved plat of survey by the Secretary.

Any points on the perimeter of a tract patented to the State without monumentation can be monumented at a later date by the Secretary and will be accepted by the State as a point on the perimeter of the patented tract.

The lands so patented shall be considered properly surveyed for the purpose of patent under the Alaska Statehood Act, and upon conveyance, the Secretary shall be under no obligation to provide additional survey of the lands.

Ernst Berkleund
For the Secretary of the Interior
By the Director, Bureau of
Land Management

9-21-73
Date

Charles F. Madson
Commissioner, Department
of Natural Resources

9/21/73
Date

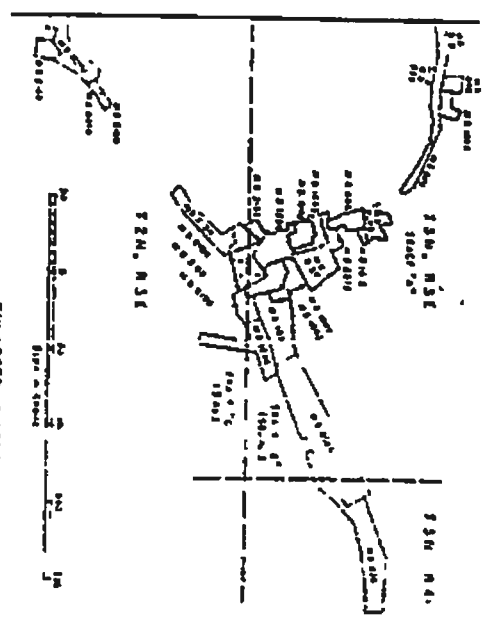
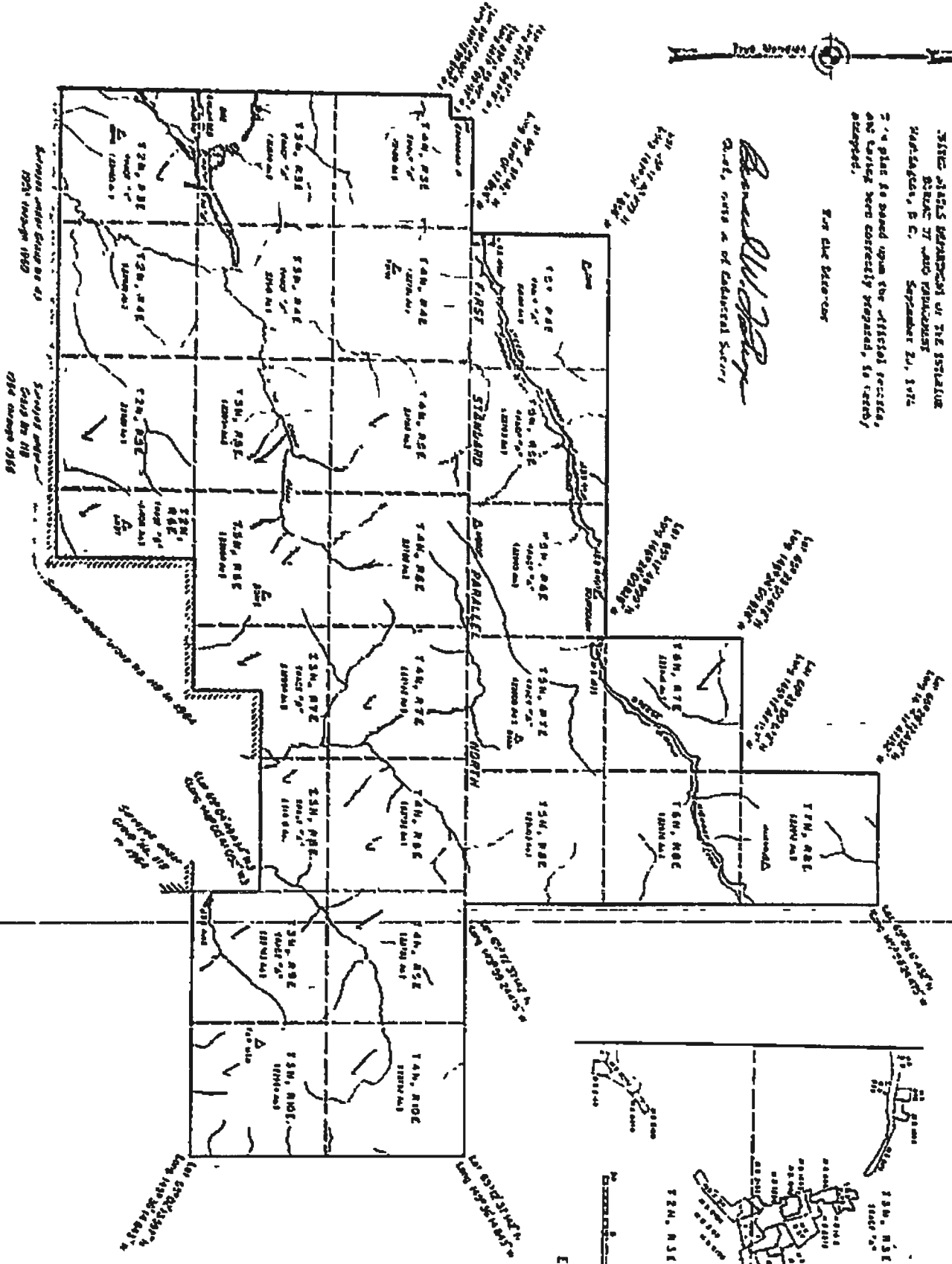
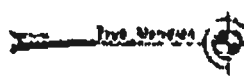
STATE SELECTION SURVEY, GROUP NO. 193, FAIRBANKS MERIDIAN, ALASKA

PROTRACTED TOWNSHIPS

Tps. 2-3, R3E; Portion of T4N, R3E; Tps 2-5N, R5,4-5E; T2N, R6E, W1/2; Tps 3-5N, R6E;
 T3N, R7E, W1/2, NE1/4; Tps 4-6N, R7E; T3N, R8E, N1/2; Tps 4-7N, R8E; Tps 3-4N, R9,9-10E.

STATE MEMORANDUM OF THE ASSISTANT
 SECRETARY OF THE INTERIOR
 WASHINGTON, D. C. September 21, 1972

Donald W. Jones
 Chief, Office of Educational Services



TYPICAL PLAT PREPARED
 UNDER THE MEMORANDUM
 OF APPROVAL, SEPT 1973
 DNR/USDI

This plat contains the entire survey record.

The plat represents a survey of certain lands selected by the State of Alaska pursuant to the grants made by Congress, 1912, under the Alaska Statehood Act of July 7, 1958 (72 Stat. 339). The descriptions of these lands, their areas and geographic coordinates of angle points along the perimeter, unless previously surveyed, are as shown on the Enlarged Diagram Nos. 17-11, 17, 13, and 15, approved January 26, 1960, and 17-14, approved February 10, 1960.

A Memorandum of Understanding between the State of Alaska and the United States on the survey of Alaska State Selections, dated September 19 and September 21, 1973, provides the basis by which this plat was created.

The preparation of this plat was authorized under Special Instructions dated May 1, 1974, for Group No. 193, Alaska.

The locations of approved U.S. surveys and U.S. Alaska surveys shown herein are based entirely upon either records and the survey records. The areas of these surveys are included from the records required for the townships in which they are plotted and the remaining portions of these townships have been designated tracts for legal description purposes.

The portions of the partial townships surveyed have also been designated tracts for legal description purposes.

The hydrography as shown on this plat was obtained from current U.S. Geological Survey topographic maps.