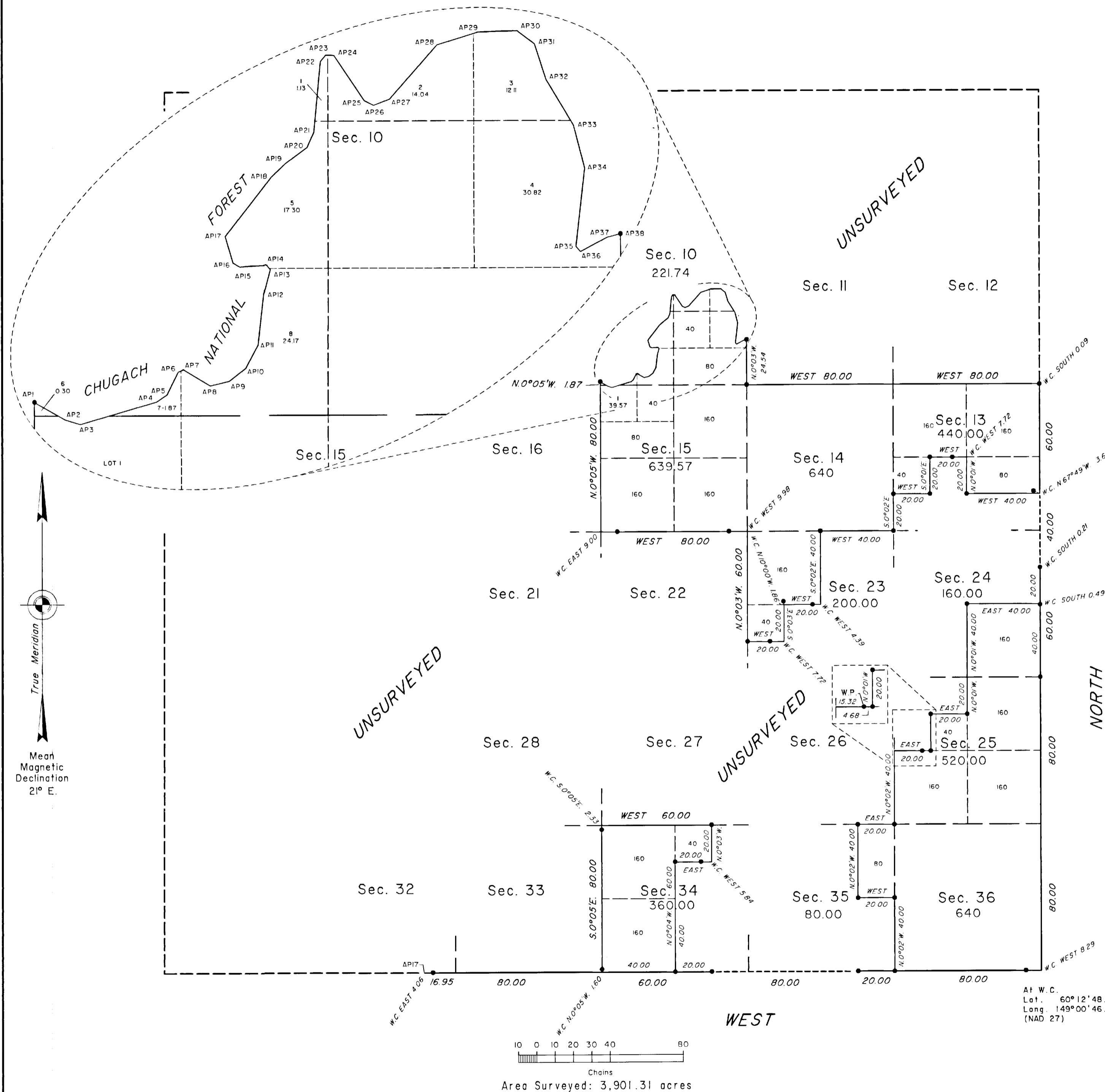


TOWNSHIP 2 NORTH, RANGE 2 EAST, OF THE SEWARD MERIDIAN, ALASKA

CHUGACH NATIONAL FOREST BOUNDARY

AP1 - AP2	S. 60° 07' E.	4.90 chs.
AP2 - AP3	S. 73° 44' E.	2.09 chs.
AP3 - AP4	N. 73° 39' E.	10.81 chs.
AP4 - AP5	N. 55° 13' E.	1.76 chs.
AP5 - AP6	N. 26° 09' E.	3.48 chs.
AP6 - AP7	N. 67° 38' E.	0.77 ch.
AP7 - AP8	S. 59° 12' E.	4.29 chs.
AP8 - AP9	N. 76° 22' E.	2.64 chs.
AP9 - AP10	N. 52° 00' E.	2.86 chs.
AP10 - AP11	N. 28° 08' E.	3.57 chs.
AP11 - AP12	N. 6° 20' E.	6.98 chs.
AP12 - AP13	N. 14° 50' E.	3.35 chs.
AP13 - AP14	N. 40° 03' W.	0.84 ch.
AP14 - AP15	S. 86° 06' W.	3.57 chs.
AP15 - AP16	N. 57° 50' W.	1.11 chs.
AP16 - AP17	N. 16° 40' W.	3.75 chs.
AP17 - AP18	N. 37° 59' E.	10.22 chs.
AP18 - AP19	N. 46° 09' E.	2.60 chs.
AP19 - AP20	N. 53° 41' E.	3.73 chs.
AP20 - AP21	N. 24° 18' E.	2.27 chs.
AP21 - AP22	N. 5° 16' E.	9.67 chs.
AP22 - AP23	N. 41° 23' E.	1.13 chs.
AP23 - AP24	S. 87° 15' E.	1.13 chs.
AP24 - AP25	S. 33° 49' E.	7.40 chs.
AP25 - AP26	S. 63° 27' E.	1.43 chs.
AP26 - AP27	N. 69° 03' E.	2.32 chs.
AP27 - AP28	N. 41° 20' E.	9.82 chs.
AP28 - AP29	N. 73° 07' E.	5.84 chs.
AP29 - AP30	N. 88° 25' E.	5.40 chs.
AP30 - AP31	S. 52° 59' E.	2.95 chs.
AP31 - AP32	S. 18° 05' E.	5.06 chs.
AP32 - AP33	S. 31° 01' E.	7.23 chs.
AP33 - AP34	S. 14° 36' E.	6.05 chs.
AP34 - AP35	S. 6° 22' W.	10.77 chs.
AP35 - AP36	S. 40° 33' E.	0.91 ch.
AP36 - AP37	N. 62° 16' E.	4.12 chs.
AP37 - AP38	N. 76° 04' E.	1.89 chs.



This plat and field notes represent the survey of a portion of the south and east boundaries, a portion of the subdivisional lines, the subdivision of selected sections and the traverse of the Chugach National Forest boundary in sections 10 and 15, Township 2 North, Range 2 East, Seward Meridian, Alaska.

This survey was executed by Charles E. Akin, Jr., Registered Alaska Land Surveyor No. LS-5131, for Chugach Alaska Corporation, August 13, through August 28, 2002, in accordance with the specifications set forth in the Manual of Surveying Instructions, 1973, the Special Instructions for Group No. 790, Alaska, dated July 18, 2001, approved July 31, 2001, Amended Special Instructions dated August 15, 2002, approved August 15, 2002, Amended Special Instructions No. 2, dated August 21, 2002, approved August 22, 2002, Contract No. NAC 010161, dated September 28, 2001, and Notice to Proceed dated May 23, 2002.

Acceptance of this survey does not purport to transfer any interest in submerged lands to which the State of Alaska is entitled under the Equal Footing Doctrine and Section 6(m) of the Alaska Statehood Act, P.L. 85-508, notwithstanding the use, location, or absence of meander lines to depict water bodies.

UNITED STATES DEPARTMENT OF THE INTERIOR
BUREAU OF LAND MANAGEMENT
Anchorage, Alaska

This plat is strictly conformable to the approved field notes, and the survey, having been correctly executed in accordance with the requirements of law and the regulations of this Bureau, is hereby accepted.

For the Director
George D. Orsatti 4 JUNE 2003
Date
Deputy State Director for Cadastral Survey, Alaska.