

# TOWNSHIP 22 SOUTH, RANGE 25 EAST, OF THE COPPER RIVER MERIDIAN, ALASKA

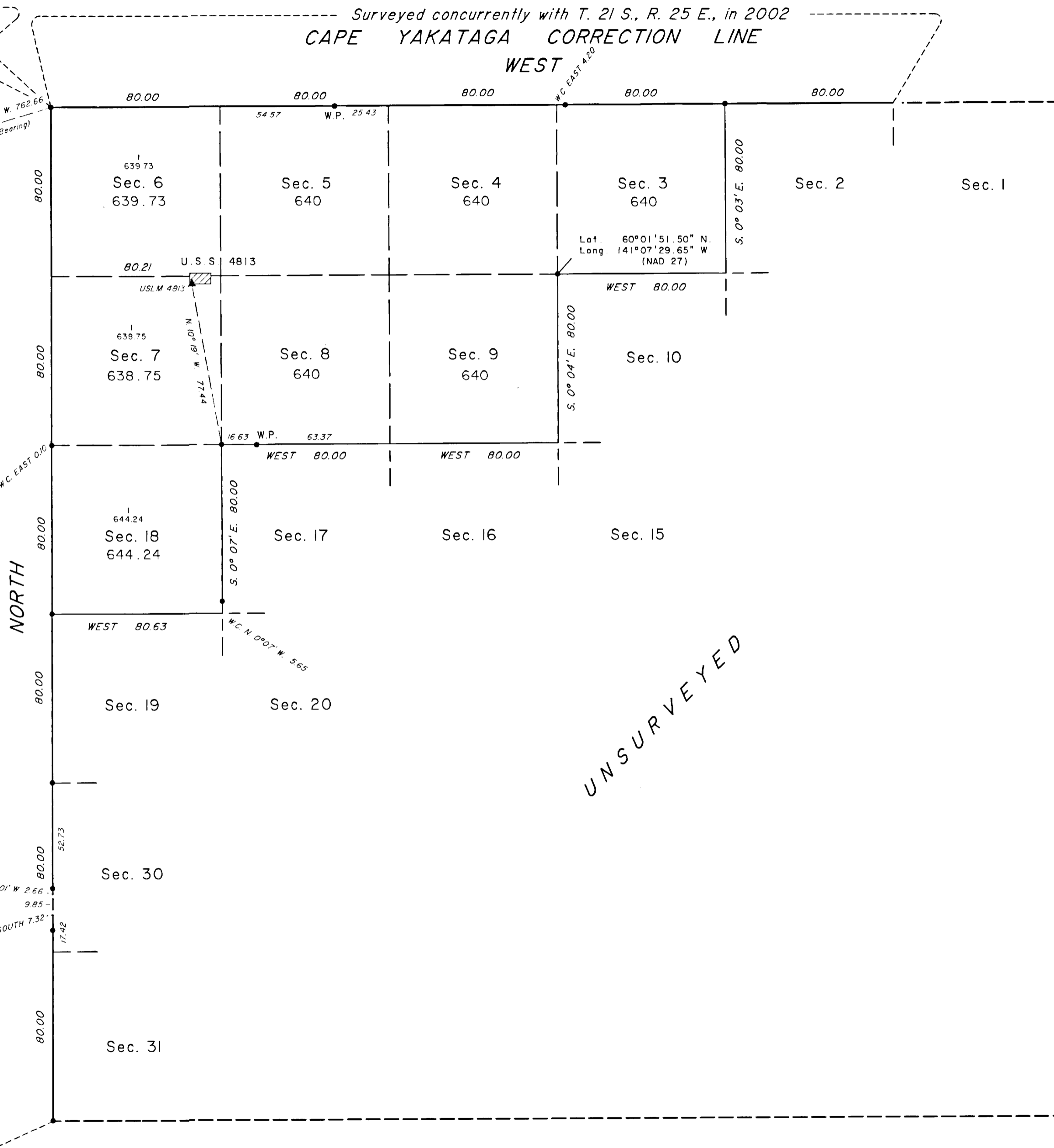
Surveyed concurrently with T. 21 S., R. 24 E., in 2002

Surveyed concurrently with T. 21 S., R. 25 E., in 2002  
CAPE YAKATAGA CORRECTION LINE  
WEST

N.G.S. "AMBER 1959"  
Lat. 60°00'23.08" N.  
Long. 141°28'31.68" W.  
(NAD 27)

True Meridian  
Mean Magnetic Declination  
23 3/4° E.

Surveyed concurrently with T. 22 S., R. 24 E., in 2002



SECOND GUIDE MERIDIAN EAST (CAPE YAKATAGA)

The history of surveys in contained in the field notes.

This plat and field notes represent survey of a portion of the subdivisional lines of Township 22 South, Range 25 East, Copper River Meridian, Alaska. A portion of the subdivisional lines of this township were surveyed by protraction as shown on this plat.

This survey was executed by Charles E. Akin, Jr., Registered Alaska Land Surveyor No. LS-5131, for the Chugach Alaska Corporation, June 1, through June 13, 2002, in accordance with the specifications set forth in the Manual of Surveying Instructions, 1973, the Special Instructions for Group No. 780, Alaska, dated May 2, 2001, approved June 6, 2001, Contract No. NAC 010161, dated September 28, 2001, and Notice to Proceed dated May 23, 2002.

Acceptance of this survey does not purport to transfer any interest in submerged lands to which the State of Alaska is entitled under the Equal Footing Doctrine and Section 6(m) of the Alaska Statehood Act, P.L. 85-508, notwithstanding the use, location, or absence of meander lines to depict water bodies.

UNITED STATES DEPARTMENT OF THE INTERIOR  
BUREAU OF LAND MANAGEMENT  
Anchorage, Alaska

This plat is strictly conformable to the approved field notes, and the survey, having been correctly executed in accordance with the requirements of law and the regulations of this Bureau, is hereby accepted.

For the Director

*George P. Quatt*

4 JUNE 2003  
Date

Deputy State Director for Cadastral Survey,  
Alaska.