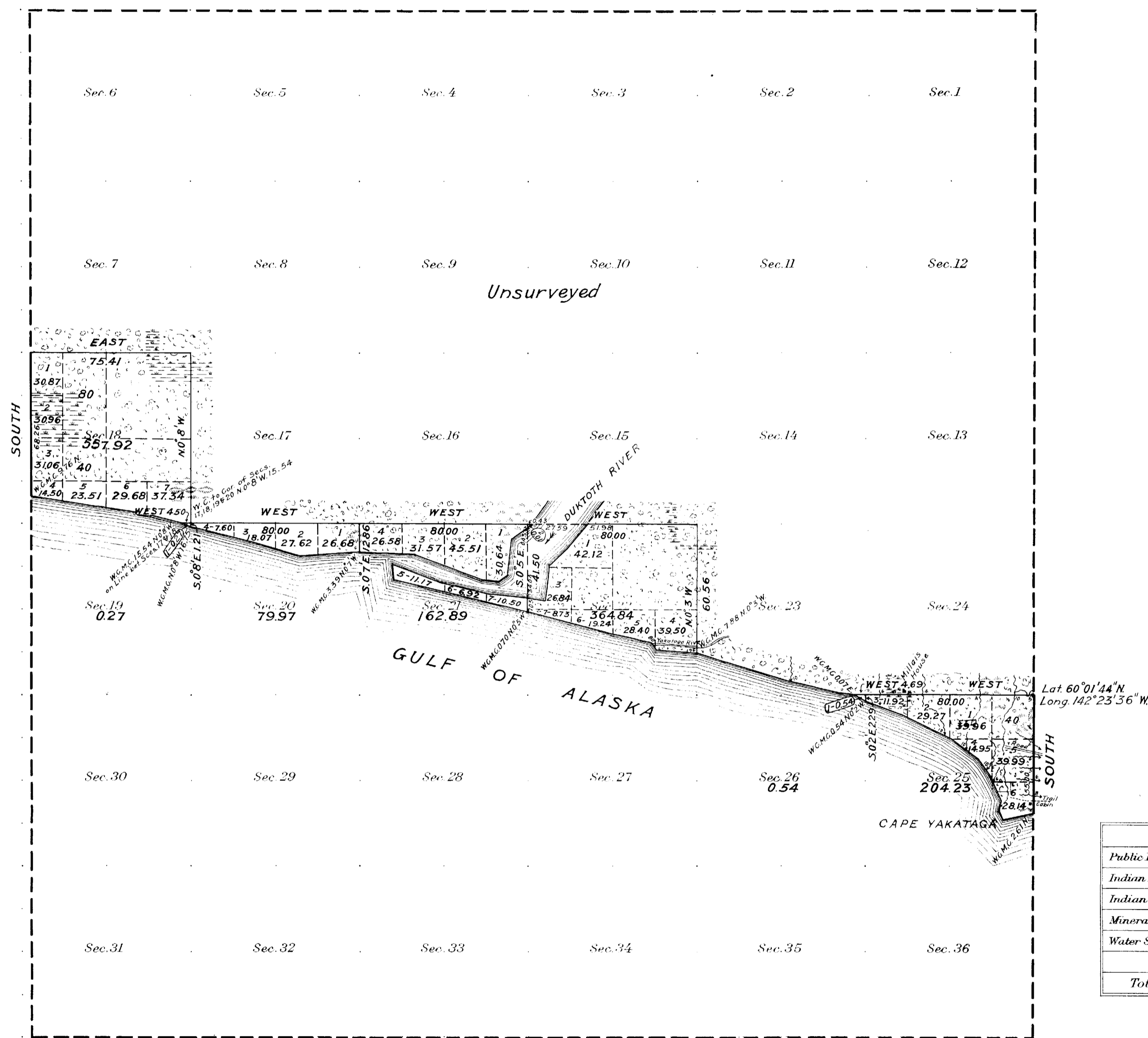


Township N^o 21 South Range N^o 17 East of the Copper River Meridian, Alaska



Areas in Acres	
Public Land	1,370.66
Indian Reservation	
Indian Allotments	
Mineral Claims	
Water Surface	
Total Area	1,370.66

Scale 40 Chains to an inch
Mean Magnetic Declination

Surveys Designated	By Whom Surveyed	Group		Amount of Surveys			When Surveyed	
		No.	Date	Mls.	chs.	lks.	Begun	Completed
East Bdy	E. D. Galvin U.S.G.E.	24	July 23, 1921	0	55	00	Aug. 10, 1921	Aug. 10, 1921
West "	" " " "	"	" " "	0	68	26	" 31 "	Sept. 1 "
Subdivisions	" " " "	"	" " "	7	43	02	" 11 "	Aug. 31 "
Meanders	" " " "	"	" " "	9	02	59	" 18 "	Sept. 1 "

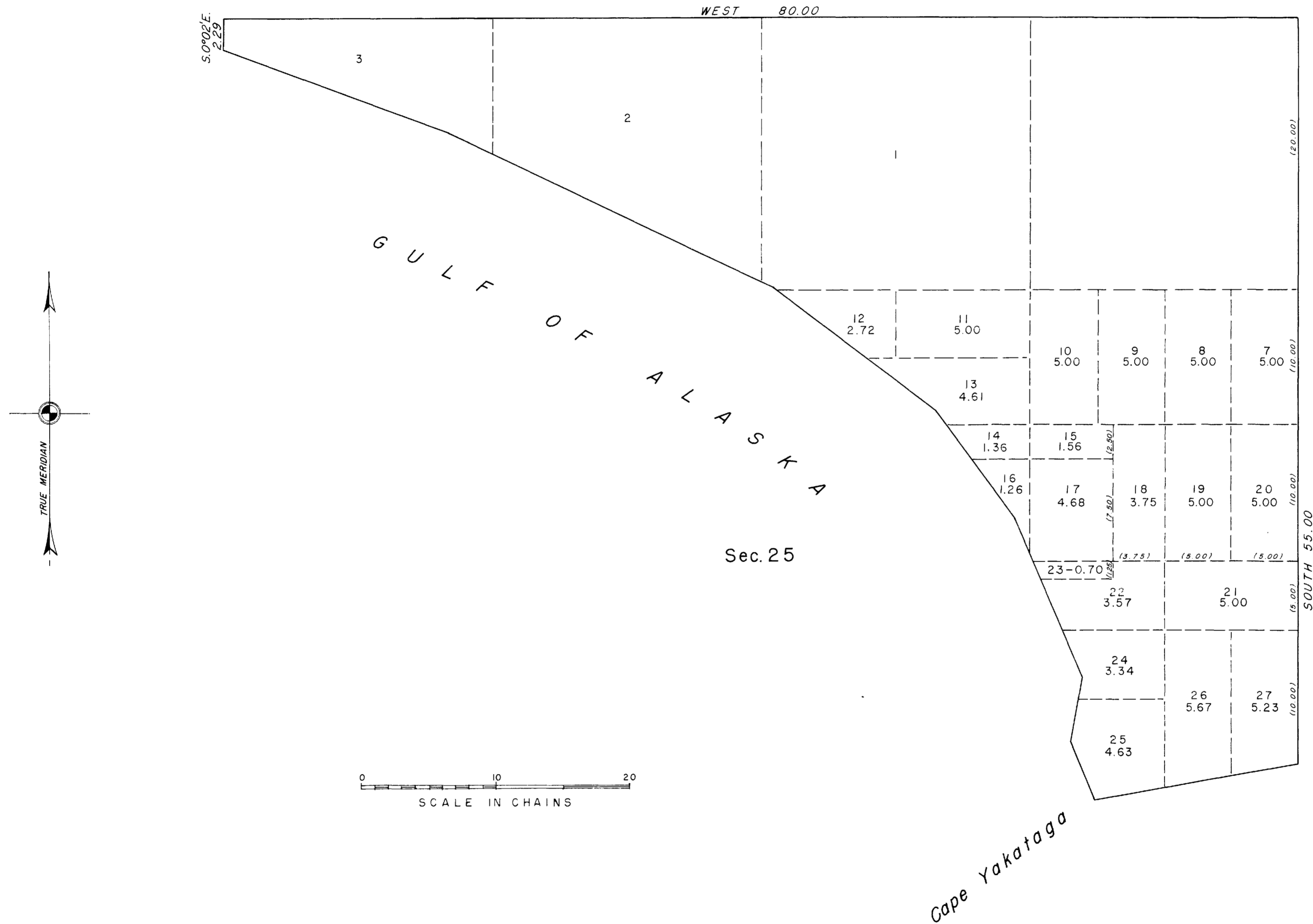
The above map of Township No. 21 South Range No. 17 East of the Copper River Meridian Alaska is strictly conformable to the field notes of the survey thereof on file in this office, which have been examined and approved.

U. S. Surveyor General's Office.
Juneau, Alaska. July 11, 1922

Lail Thiele
Surveyor General.

TOWNSHIP 21 SOUTH, RANGE 17 EAST OF THE COPPER RIVER MERIDIAN, ALASKA

SUPPLEMENTAL PLAT OF SECTION 25



This supplemental plat of sec. 25, T. 21 S., R. 17 E., of the Copper River Meridian, Alaska, showing the subdivision of original lots 4, 5 and 6 into lots 7 to 27 inclusive, is based upon the plat accepted November 3, 1922.

UNITED STATES
DEPARTMENT OF THE INTERIOR
BUREAU OF LAND MANAGEMENT
Washington, D. C., February 10, 1953

This plat showing amended lottings, having been correctly prepared in accordance with the regulations, is hereby accepted.

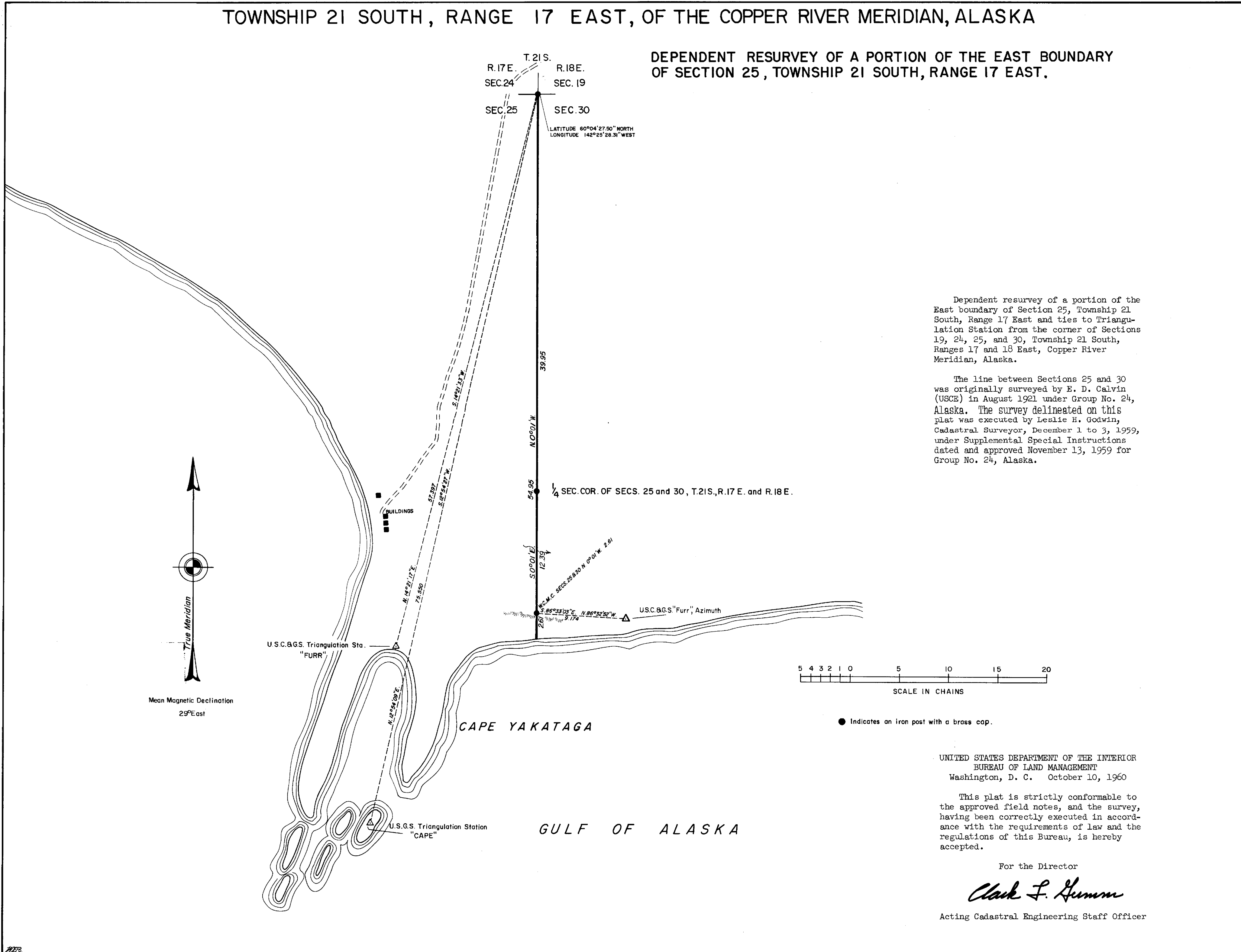
For the Director

Donald B. Clement

Assistant Chief, Division of
Cadastral Engineering

TOWNSHIP 21 SOUTH, RANGE 17 EAST, OF THE COPPER RIVER MERIDIAN, ALASKA

DEPENDENT RESURVEY OF A PORTION OF THE EAST BOUNDARY OF SECTION 25, TOWNSHIP 21 SOUTH, RANGE 17 EAST.



Dependent resurvey of a portion of the East boundary of Section 25, Township 21 South, Range 17 East and ties to Triangulation Station from the corner of Sections 19, 24, 25, and 30, Township 21 South, Ranges 17 and 18 East, Copper River Meridian, Alaska.

The line between Sections 25 and 30 was originally surveyed by E. D. Calvin (USCE) in August 1921 under Group No. 24, Alaska. The survey delineated on this plat was executed by Leslie H. Godwin, Cadastral Surveyor, December 1 to 3, 1959, under Supplemental Special Instructions dated and approved November 13, 1959 for Group No. 24, Alaska.

UNITED STATES DEPARTMENT OF THE INTERIOR
BUREAU OF LAND MANAGEMENT
Washington, D. C. October 10, 1960

This plat is strictly conformable to the approved field notes, and the survey, having been correctly executed in accordance with the requirements of law and the regulations of this Bureau, is hereby accepted.

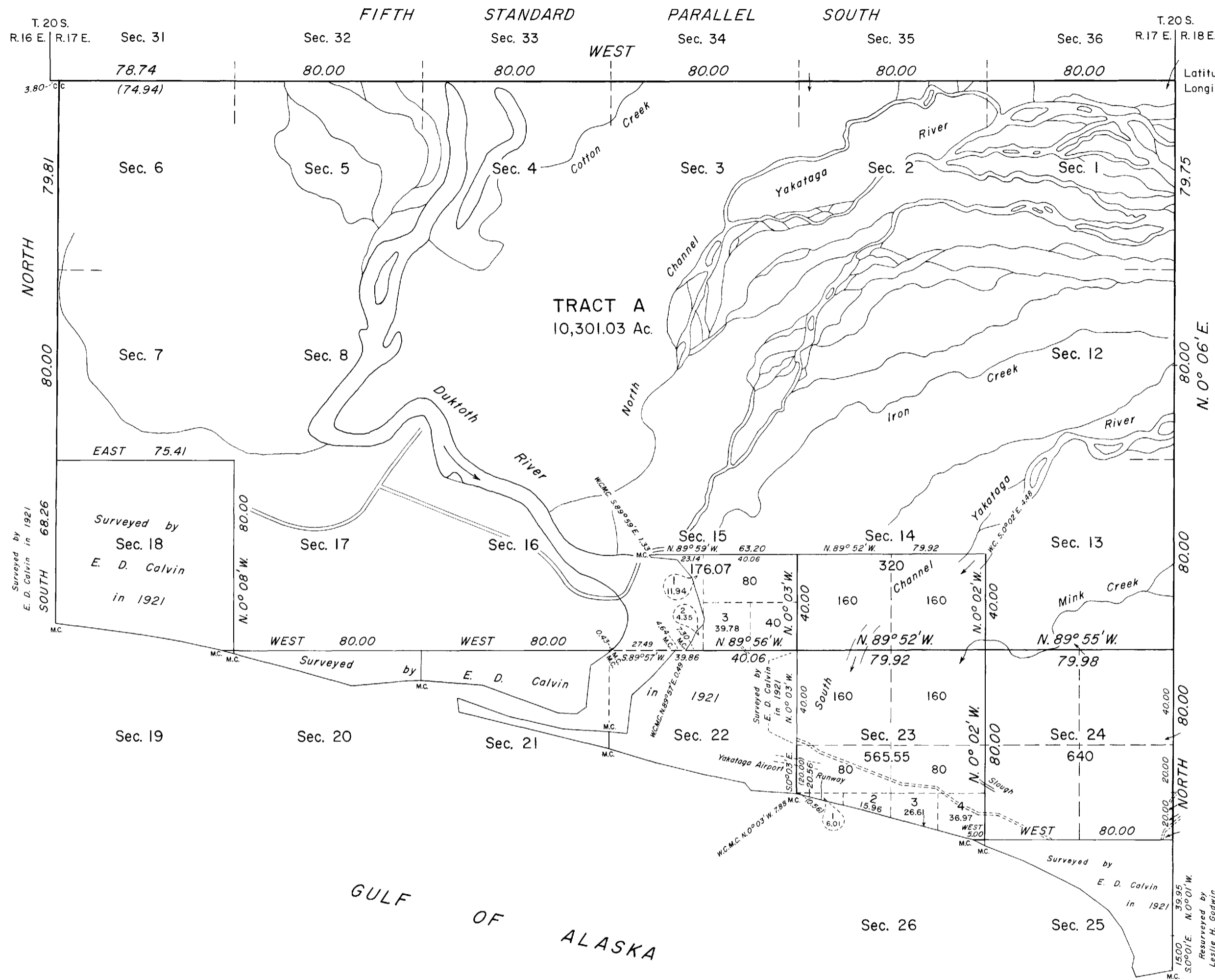
For the Director

Clark F. Humm

Acting Cadastral Engineering Staff Officer

TOWNSHIP 21 SOUTH, RANGE 17 EAST, OF THE COPPER RIVER MERIDIAN, ALASKA

DEPENDENT RESURVEY AND SURVEY



A history of surveys is contained in the field notes.

The Fifth Standard Parallel South, along the north boundary, was surveyed concurrently with the adjoining township under this same group.

This plat represents the dependent resurvey of a portion of the subdivisional lines and the rehabilitation of the $\frac{1}{4}$ section corner of sections 24 and 25, designed to restore the corners in their true original locations according to the best available evidence, and the survey of the Cape Yakataga Auxiliary Guide Meridian, along the east boundary; the west boundary; a portion of the subdivisional and meander lines; and the subdivision of sections 14 and 15 of fractional T. 21 S., R. 17 E., Copper River Meridian, Alaska, executed by Frederick W. Ward and John F. S. Westoby, Cadastral Surveyors, May 25, 1971, through September 15, 1972, under Amended Special Instructions dated May 17, 1971, which supersedes the Special Instructions, dated May 10, 1971, and Supplemental Special Instructions dated May 22, 1972, for Group No. 318, Alaska.

A portion of this township has been designated Tract "A" for legal description purposes.

The hydrography shown on this plat was obtained from the best available U.S. Geological Survey topographic maps and measurements to topographic features.

UNITED STATES DEPARTMENT OF THE INTERIOR
BUREAU OF LAND MANAGEMENT
Washington, D.C. August 21, 1978

This plat is strictly conformable to the approved field notes, and the survey, having been correctly executed in accordance with the requirements of law and the regulations of this Bureau, is hereby accepted.

For the Director

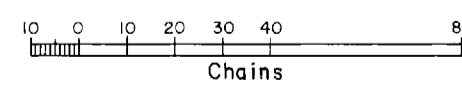
Acting Chief, Division of Cadastral Survey

NOTE: The area of Tract "A" is hereby adjusted to exclude the bed of meanderable water.

ORIGINAL AREA OF TRACT "A"	10,301.03 ACRES
EXCLUSION: DUKTOTOH RIVER	400.00 ACRES
ADJUSTED AREA OF TRACT "A"	9,901.03 ACRES

For the Director

Janet D. Stewart Feb. 8, 1985
Date
Deputy State Director for Cadastral Survey, Alaska



Area Surveyed: 12,002.65 Ac.