

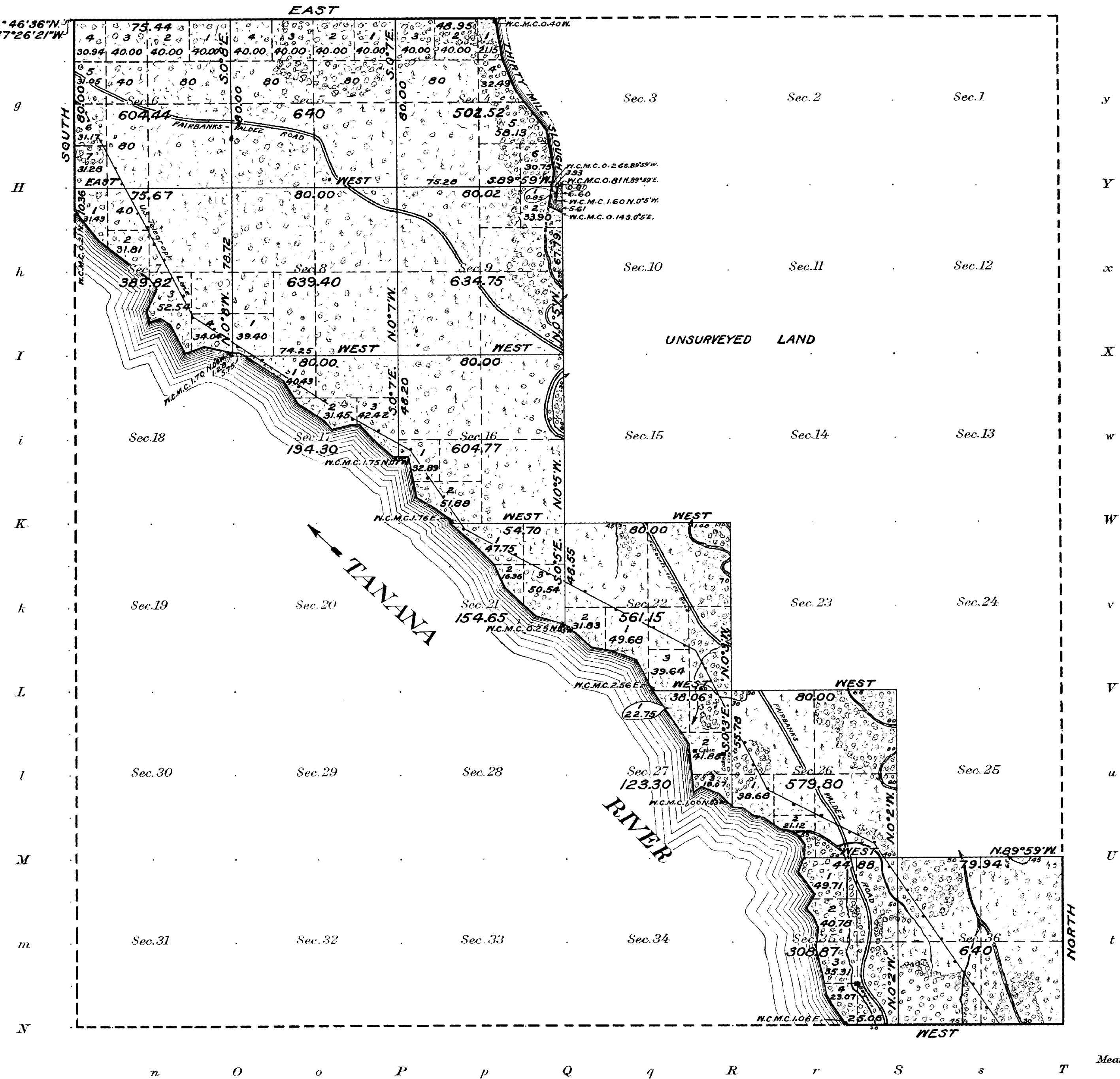
(4-675 a)

ORIGINAL
Accepted October 8, 1921

Township No 2 South, Range No 2 East of the Fairbanks Meridian, Alaska.

G f F e E d D c C b B a A

Lat. 64° 46' 36" N.
Long. 147° 26' 21" W.



Areas in Acres	
Public Land	6577.77
Indian Reservation	
Indian Allotments	
Mineral Claims	
Water Surface	5.85
Total Area	6583.62

Scale 40 Chains to an inch
Mean Magnetic Declination

Surveys Designated	By Whom Surveyed	Group			Amount of Surveys		When Surveyed	
		No.	Date	Mls.	chs.	ks.	Begun	Completed
North Boundary	E.C. Guerin, U.S.S.	16	June 5, 1920	2	44	39	July 9, 1920	July 30, 1920
West	"	"	"	1	10	36	July 10, "	July 10, "
East	"	"	"	1	00	00	July 20, "	July 20, "
South	"	"	"	1	25	06	July 19, "	July 19, "
Subdivisional Lines	"	"	"	20	45	80	July 10, "	Aug. 2, "
Meanders	"	"	"	3	06	99	July 23, "	Aug. 6, "

The above map of Township No. 2 South Range No. 2 East of the Fairbanks Meridian, Alaska is strictly conformable to the field notes of the survey thereof on file in this office, which have been examined and approved.

U. S. Surveyor General's Office.
Juneau, Alaska, June 4, 1921.

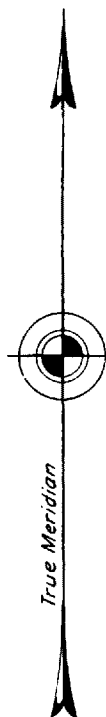
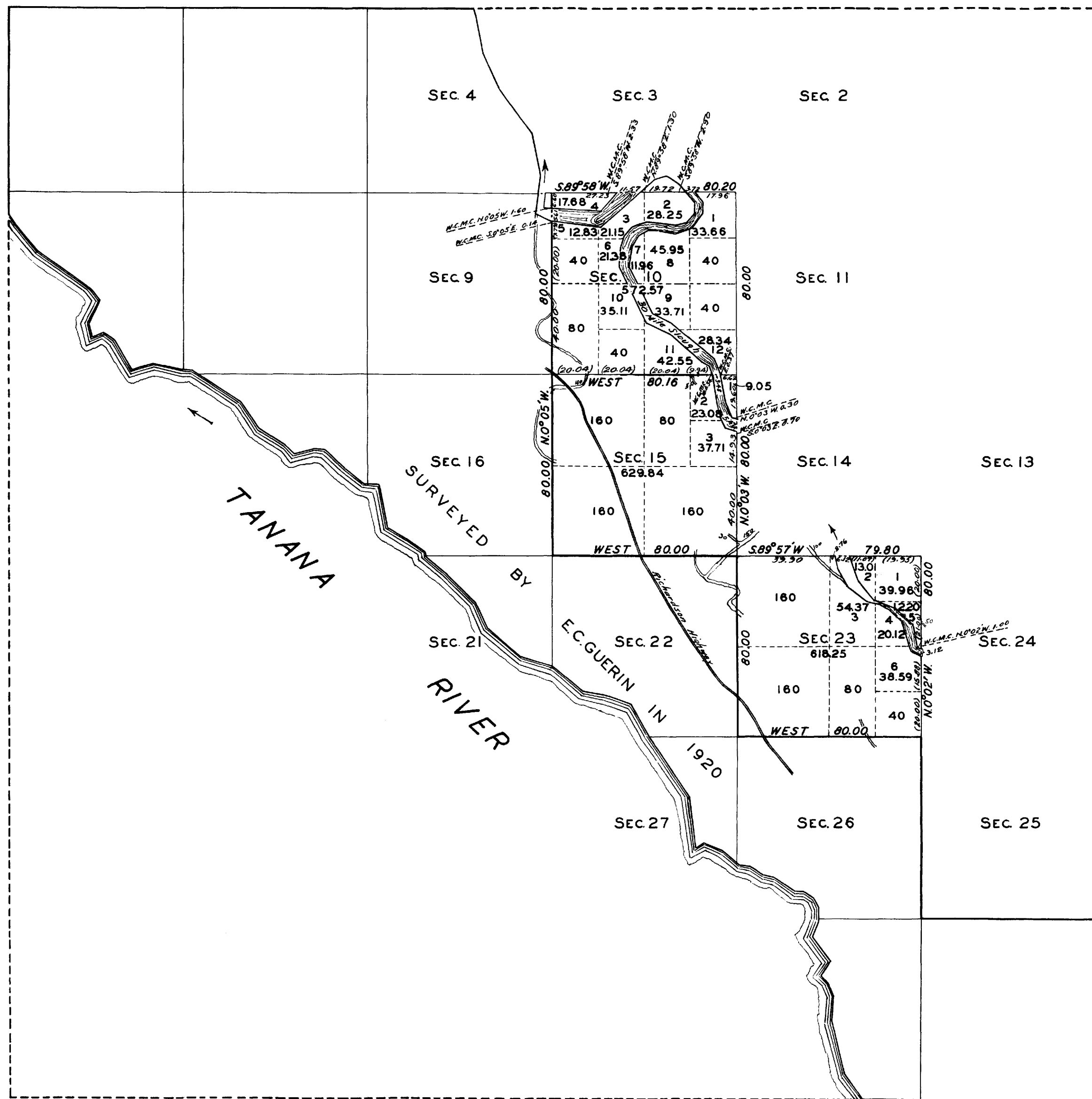
H. J. Dammann
Surveyor General.

Check L.P.K.
Calc. & Plat. F.D.

(4-675b)

ORIGINAL

TOWNSHIP NO 2 SOUTH RANGE NO 2 EAST FAIRBANKS MERIDIAN ALASKA



Mean Magnetic Declination, 31° EAST Scale: 40 Chains to an Inch. Area Surveyed, 1820.66 Acres.

LINES DESIGNATED	BY WHOM SURVEYED	NO	GROUP DATE	MILEAGE MLS. CHS.	WHEN SURVEYED BEGUN	COMPLETED
Exterior						
Subdivisional	CHAS. P. SEELYE, U.S.T.	45	APRIL 12, 1932	6 0.16	MAY 23 1933	JUNE 25 1932
Meander	"	"	"	6 33.30	"	"
Miscellaneous						

Office of U.S. Supervisor of Surveys
 Denver, Colorado, Dec. 7, 1933
 The above plat of Township No. 2 SOUTH Range No. 2 EAST of the FAIRBANKS Meridian, ALASKA is strictly conformable to the field notes of the survey thereof which have been examined and approved.

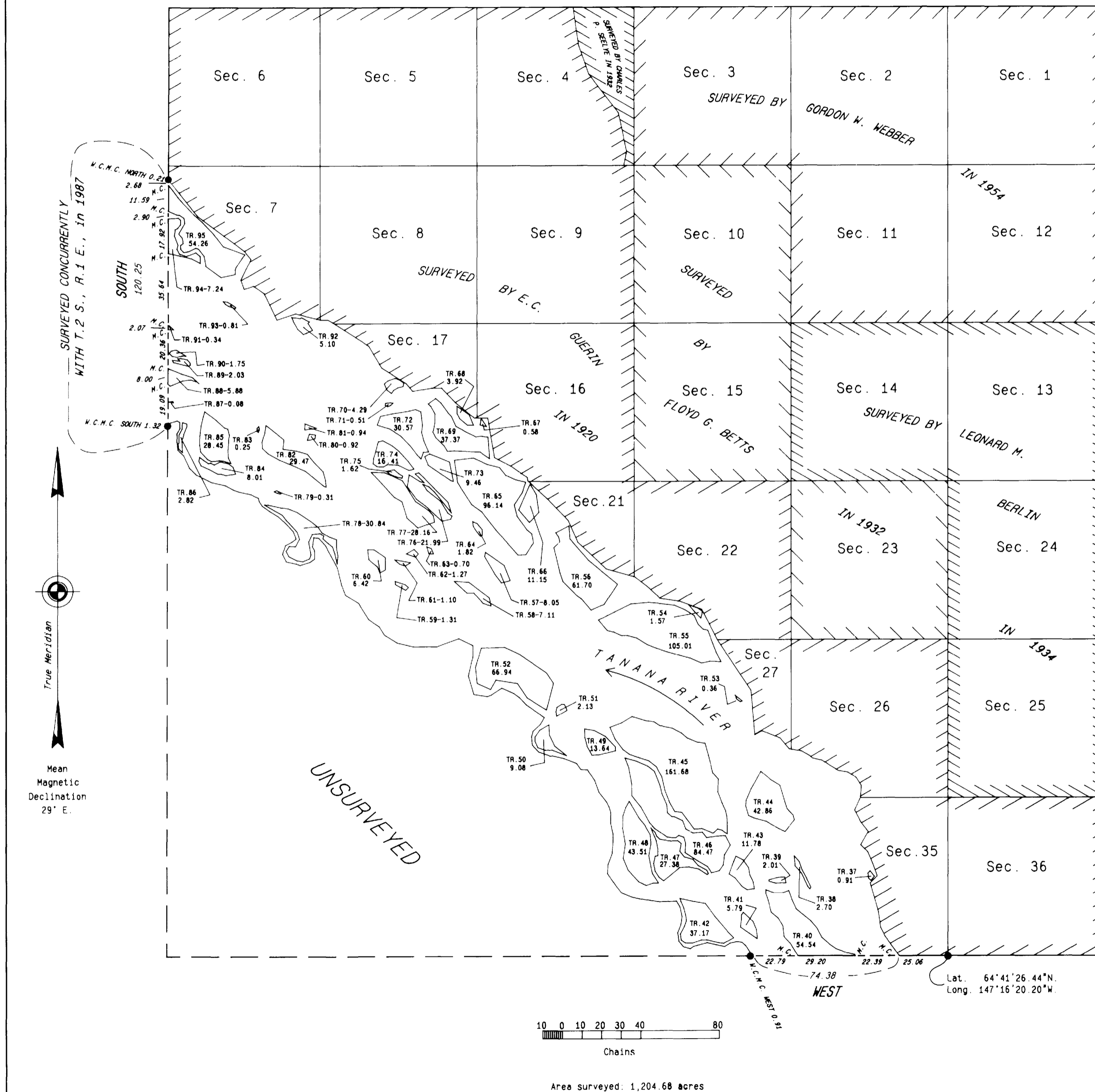
Wm. H. Dimes
 U.S. Supervisor of Surveys.

DEPARTMENT OF THE INTERIOR
 GENERAL LAND OFFICE
 Washington, D.C., April 23, 1934.
 The survey represented by this plat having been correctly executed in accordance with the requirements of law and the regulations of this office, is hereby accepted.

D. H. Canfield
 Acting Assistant Commissioner.

RWS
6/30

TOWNSHIP 2 SOUTH, RANGE 2 EAST, OF THE FAIRBANKS MERIDIAN, ALASKA



The history of surveys is contained in the field notes.

This plat and field notes represent the retracement and survey of a portion of the south boundary and a portion of the meanders of the Tanana River in Township 2 South, Range 2 East, Fairbanks Meridian, Alaska.

This survey was executed by Charles E. Akin, Jr., Registered Alaska Land Surveyor No. LS-5131, May 4 through July 27, 1987, in accordance with the specifications set forth in the Manual of Surveying Instructions, 1973, Special Instructions for Group No. 444, Alaska, dated December 12, 1985, Amended Special Instructions dated April 15, 1987, Amended Special Instructions dated May 5, 1987, under Contract No. YA551-C16-340098, dated September 26, 1986, and Notice to Proceed dated April 29, 1987.

This survey encompasses all land, including islands, islets and rocks, above the line of mean high water which were in existence at the time of survey whether or not they are shown on this plat.

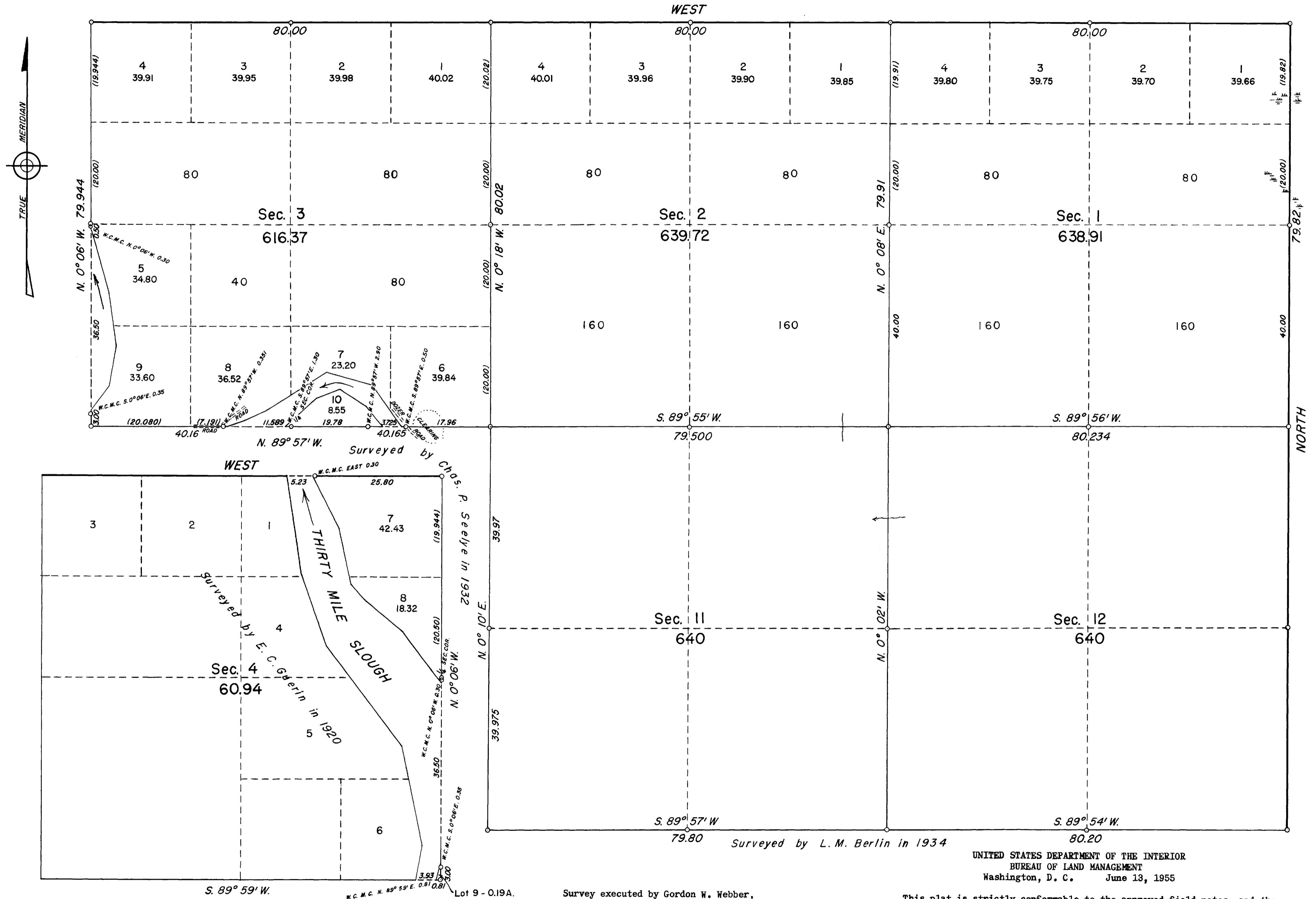
UNITED STATES DEPARTMENT OF THE INTERIOR
BUREAU OF LAND MANAGEMENT
Anchorage, Alaska

This plat is strictly conformable to the approved field notes, and the survey, having been correctly executed in accordance with the requirements of law and the regulations of this Bureau, is hereby accepted.

For the Director

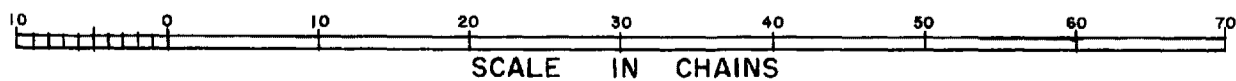
Date _____
Deputy State Director for Cadastral Survey, Alaska

TOWNSHIP 2 SOUTH, RANGE 2 EAST, OF THE FAIRBANKS MERIDIAN, ALASKA



o indicates an iron post.

Area Surveyed, 3235.94 acres



Survey executed by Gordon W. Webber,
 June 2 to 15, 1954 under special instructions
 dated April 27, 1934 for Group 49, Alaska

This plat is strictly conformable to the approved field notes, and the
 survey, having been correctly executed in accordance with the requirements
 of law and the regulations of this Bureau, is hereby accepted.

For the Director
Donald B. Clement
 Acting Cadastral Engineering Staff Officer

UNITED STATES DEPARTMENT OF THE INTERIOR
 BUREAU OF LAND MANAGEMENT
 Washington, D. C. June 13, 1955