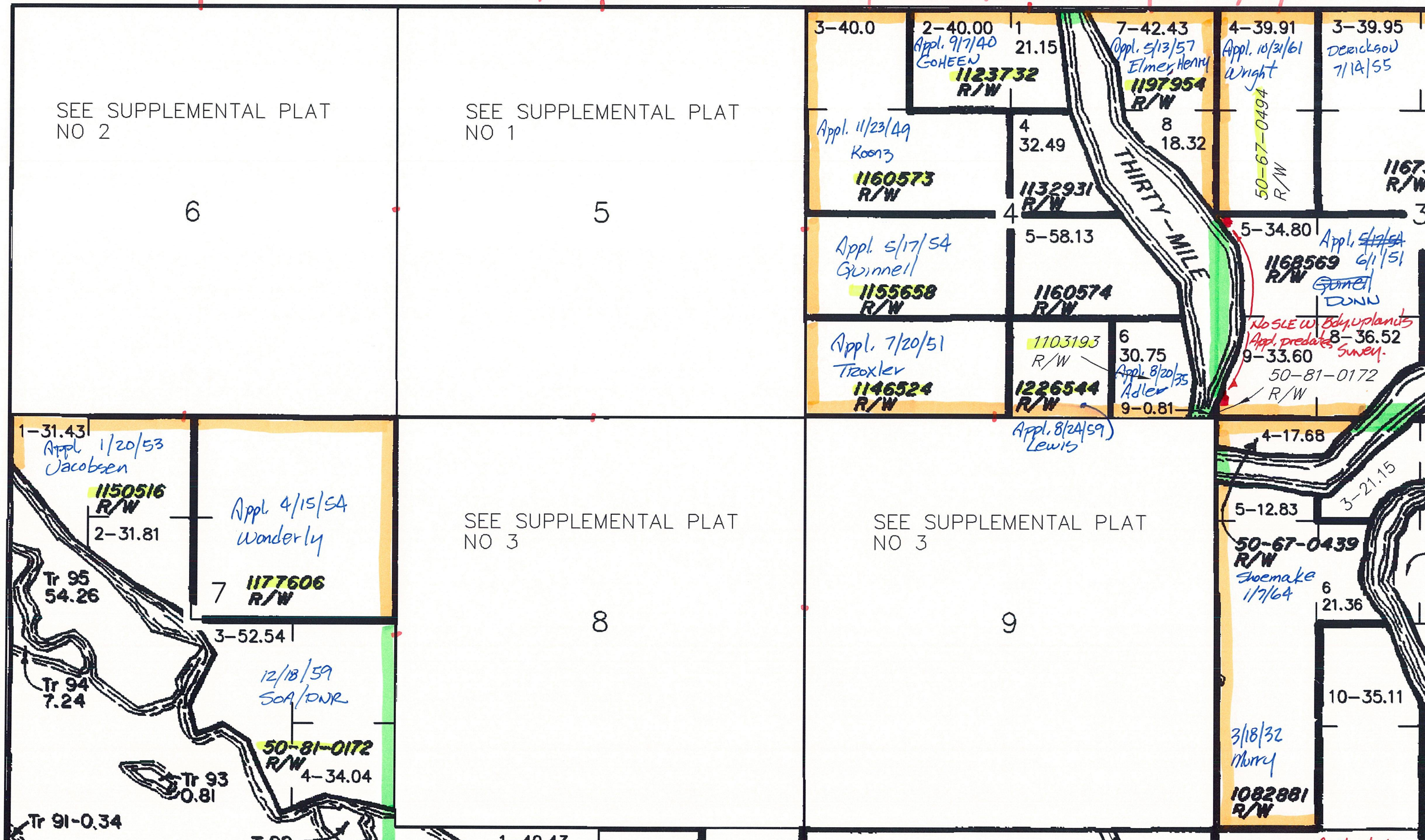




T2S, R2E, FM S 4-9 except E. Bdy S4 Surveyed 6/4/21



SEE SUPPLEMENTAL PLAT NO 2

SEE SUPPLEMENTAL PLAT NO 1

6

5

SEE SUPPLEMENTAL PLAT NO 3

SEE SUPPLEMENTAL PLAT NO 3

8

9

1-31.43  
App. 1/20/53  
Jacobsen

1150516  
R/W

App. 4/15/54  
Wanderly

7 1177606  
R/W

3-52.54

12/18/59  
SOA/DNR

50-81-0172  
R/W

4-34.04

Tr 95  
54.26

Tr 94  
7.24

Tr 93  
0.81

Tr 91-0.34

3-40.0

2-40.00  
App. 9/7/40  
Goheen  
1123732  
R/W

1 21.15

7-42.43  
App. 5/13/57  
Elmer, Henry  
1197954  
R/W

4-39.91  
App. 10/31/61  
Wright  
50-67-0494  
R/W

3-39.95  
Deerickson  
7/12/55

App. 11/23/49  
Koonz  
1160573  
R/W

4 32.49

1132931  
R/W

8 18.32

11673  
R/W

App. 5/17/54  
Guinnell  
1155658  
R/W

5-58.13

1160574  
R/W

5-34.80

App. 5/17/54  
6/1/51  
1168569  
R/W  
Gunnell  
Dunn

App. 7/20/51  
Troxler  
1146524  
R/W

1103193  
R/W

1226544  
R/W

6 30.75

App. 8/20/35  
Adler  
9-0.81

No SLE w/ Bdy. Uplands  
App. predates Survey.  
8-36.52  
9-33.60  
50-81-0172  
R/W

App. 8/24/59  
Lewis

4-17.68

5-12.83

50-67-0439  
R/W

Shoemaker  
1/7/64

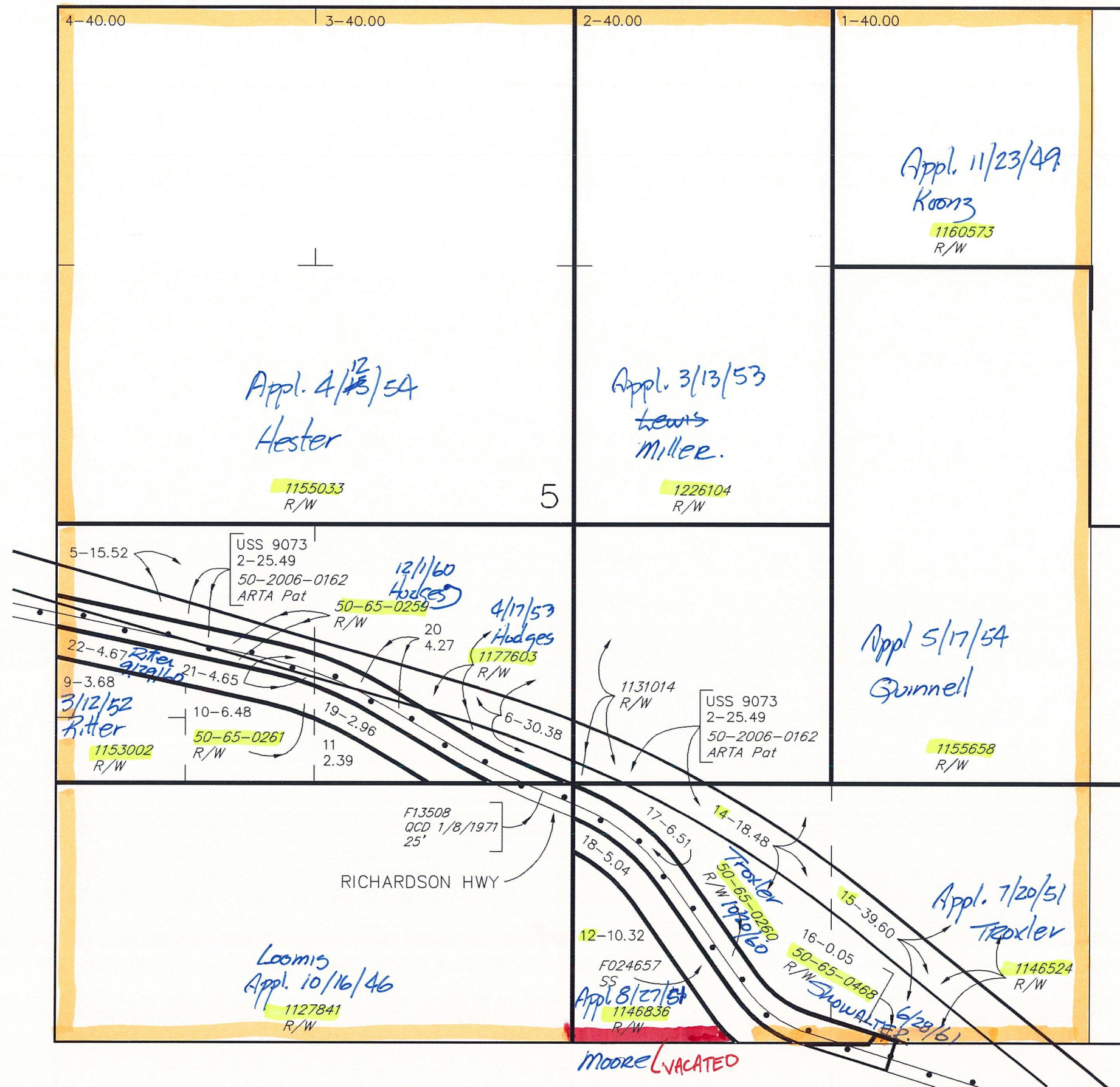
6 21.36

10-35.11

3/18/32  
Morry

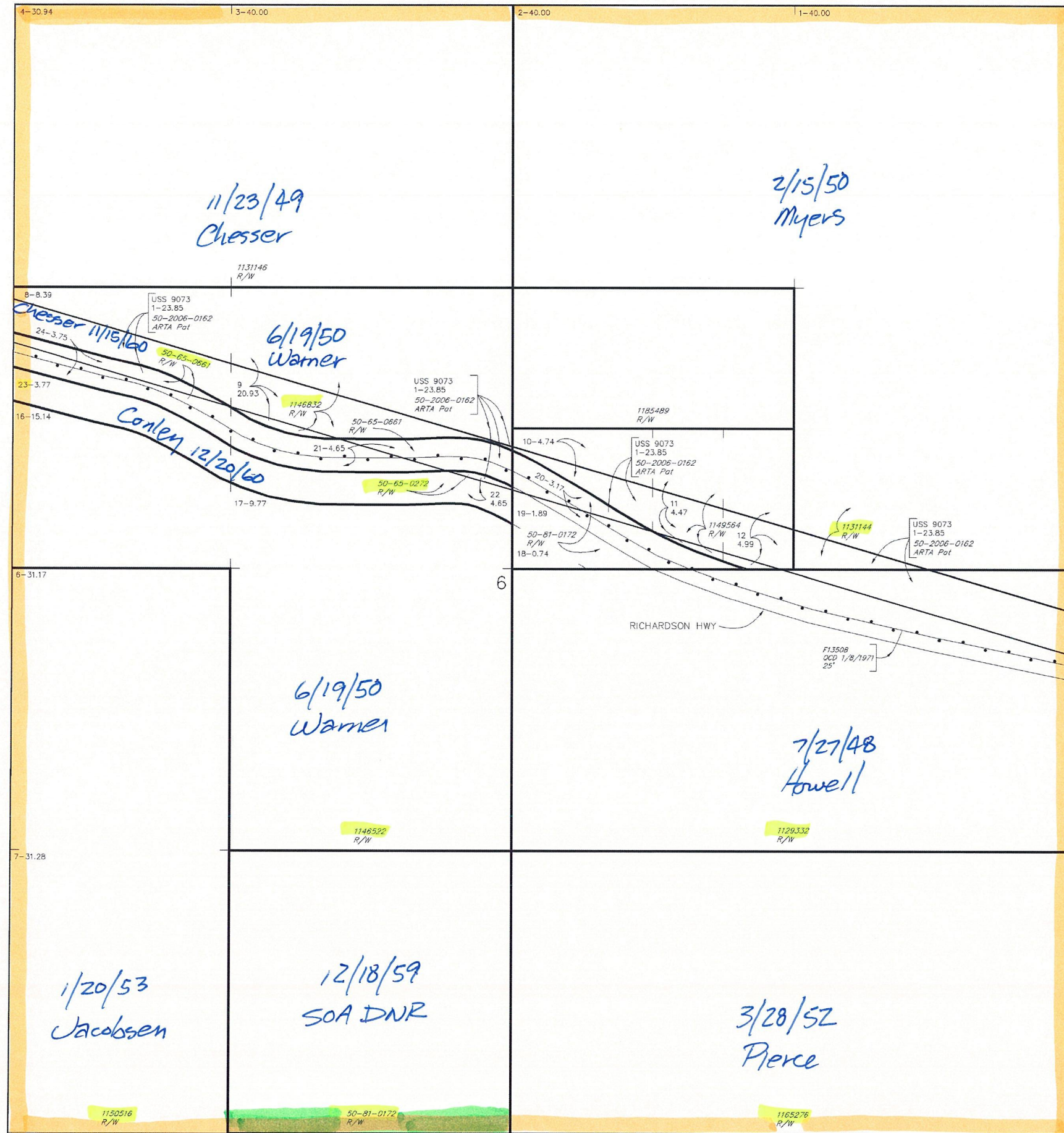
1082881  
R/W

N. Line Sec 10 Surveyed 4/23/34  
W. Line Sec 3 Surveyed 6/13/55



PARTIALLY SURVEYED TOWNSHIP 2 SOUTH RANGE 2 EAST OF THE FAIRBANKS MER

PROTRACTION DIAGRAM NO. F9-4 OFFICIALLY FILED 6/21/1960



# PARTIALLY SURVEYED TOWNSHIP 2 SOUTH RANGE 2 EAST OF THE FAIRBANKS ME

PROTRACTION DIAGRAM NO. F9-4 OFFICIALLY FILED 6/21/1960

