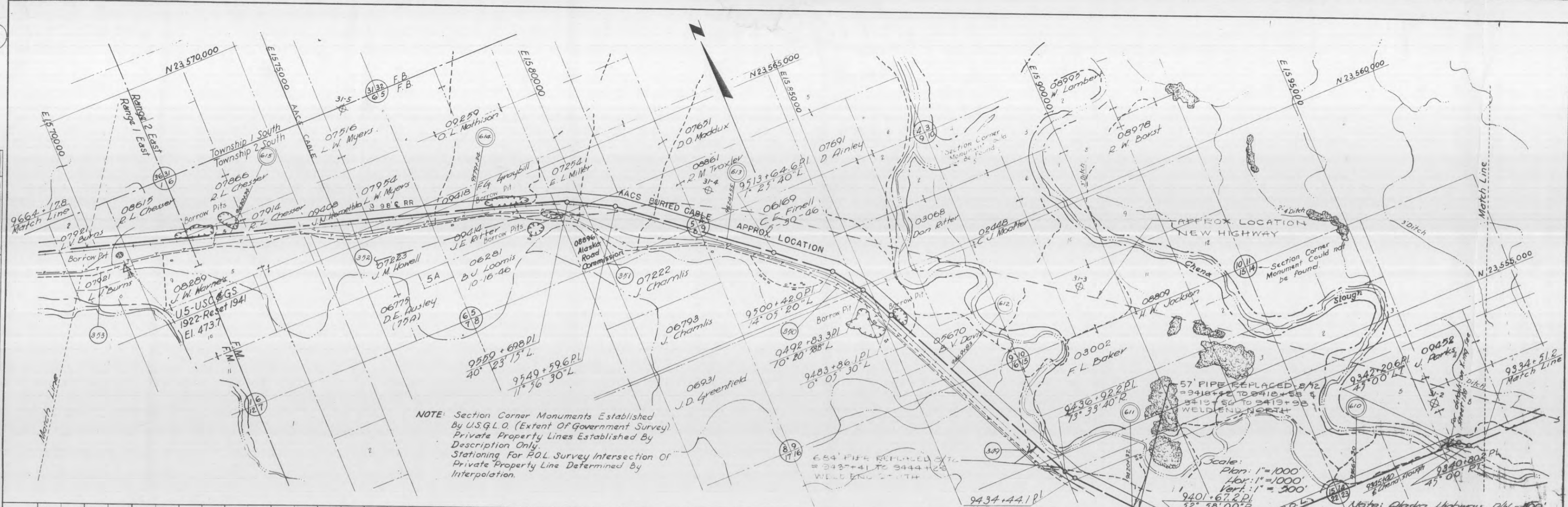


478

DATE _____ BY _____
 SURVEYED _____
 PLAN NOTE BOOK _____
 ALIGNED CHECKED _____
 RT. OF WAY CHECKED _____
 NO. _____



NOTE: Section Corner Monuments Established By U.S.G.L.O. (Extent Of Government Survey) Private Property Lines Established By Description Only. Stationing For P.O.L. Survey Intersection Of Private Property Line Determined By Interpolation.

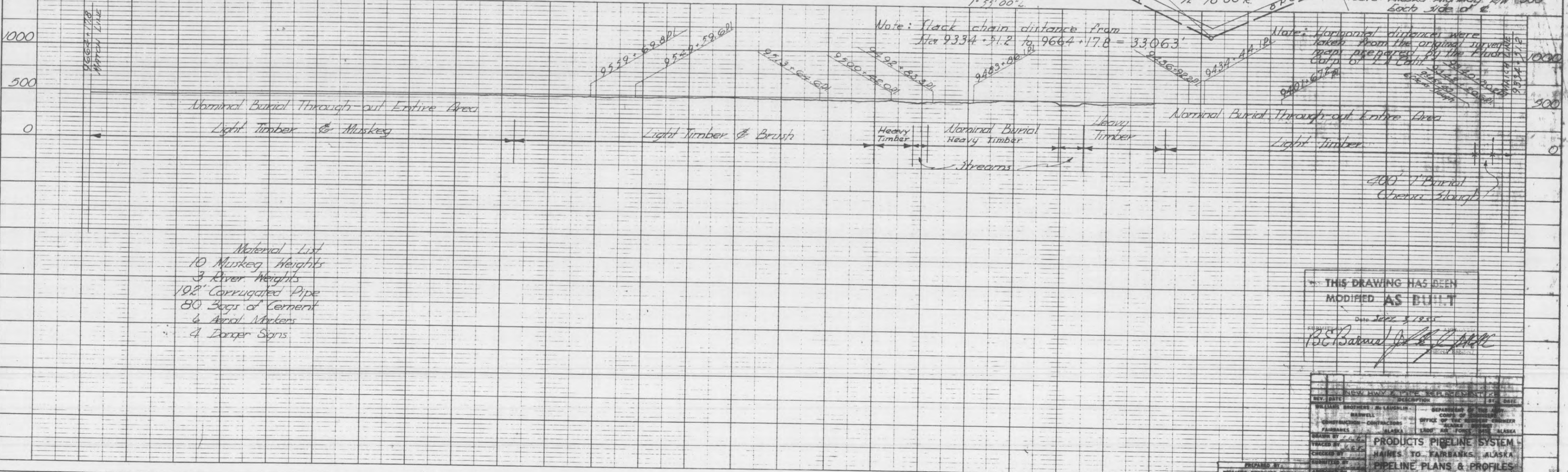
Scale: Plan: 1"=1000'
 Hor: 1"=1000'
 Vert: 1"=200'

Note: Alaska Highway, R/W 500' Each side 10' E

Note: Stack chain distance from Sta 9334+51.2 to 9664+17.8 = 33063'

Note: Horizontal distances were taken from the original survey by the Alaska Dept of Public Safety, 1922-1924. Stationing is from the original survey.

DATE _____ BY _____
 SURVEYED _____
 PROFILE NOTE BOOK _____
 ALIGNED CHECKED _____
 RT. OF WAY CHECKED _____
 NO. _____



- Material List
- 10 Muskeg Heights
 - 3 River Heights
 - 198' Corrugated Pipe
 - 80 Bags of Cement
 - 4 Aerial Markers
 - 4 Dancer Signs

THIS DRAWING HAS BEEN MODIFIED AS BUILT
 Date 2022 8 19 55
 B.E. Barlow

REV.	DATE	DESCRIPTION	BY	CHECKED
1		NEW HWY PIPE REPLACEMENT		
2		CONSTRUCTION CONTRACTORS		
3		ALASKA		
4		ALASKA		
5		ALASKA		
6		ALASKA		
7		ALASKA		
8		ALASKA		
9		ALASKA		
10		ALASKA		

DI-111