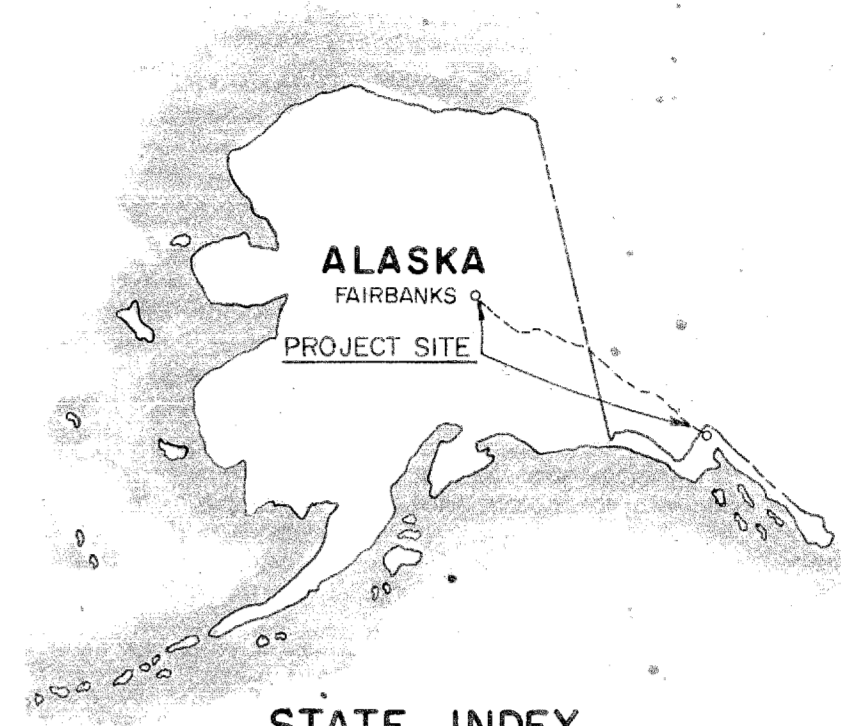


| TRACT NO. | LAND OWNER | ACREAGE | | REMARKS |
|-----------|---|---------|--------|---|
| | | TRANS. | ESM.T. | |
| B 172 E | John I. Gilmore et ux | | 1.15 | Easement Deed for POL pipeline r/w, perpetual from 23 Jun 1954. |
| B 173 E | Milburn G. Bradway et ux | | 3.03 | Easement Deed for POL pipeline r/w, perpetual from 19 Dec 1953, Civil Case No. 7806. |
| B 174 E | George F. Ramsey et ux | | 3.04 | Easement Deed for POL pipeline r/w, perpetual from 11 Jun 1954. |
| B 175 E | Klausoni Morris et al | | 3.03 | Easement for POL pipeline r/w, perpetual from 19 Dec 1953, Civil Case No. 7806. |
| B 176 E | Maurice L. Laurance | | 0.69 | Easement for POL pipeline r/w, perpetual from 15 Dec 1954, Civil Case No. 8094. |
| B 177 E | Robert C. Miller | | 1.52 | Easement Deed for POL pipeline r/w, perpetual from 12 Jun 1954, Right of Entry dated 13 Feb 1954. |
| B 178 E | Joyson G. Buzby et ux | | 4.55 | Easement Deed for POL pipeline r/w, perpetual from 12 Jun 1954, Right of Entry dated 13 Feb 1954. |
| D | U.S. Dept. of the Interior (BLM) | | | See Sheet 8 for total acreage, 12.72 acres this sheet. |
| M | U.S. Dept. of Transportation, The Alaska Railroad | 51.24 | | Contract No. 14-04-003-603 dtd 28 Jan 54, Term 1 Feb 54 to 31 Jun 74. Extended by Sup No 3 to Term. 31 Jun 89. Easement reserved by virtue of PL-468 (Alaska Railroad Transfer Act) for pipeline ROW. |



FINAL PROJECT MAP

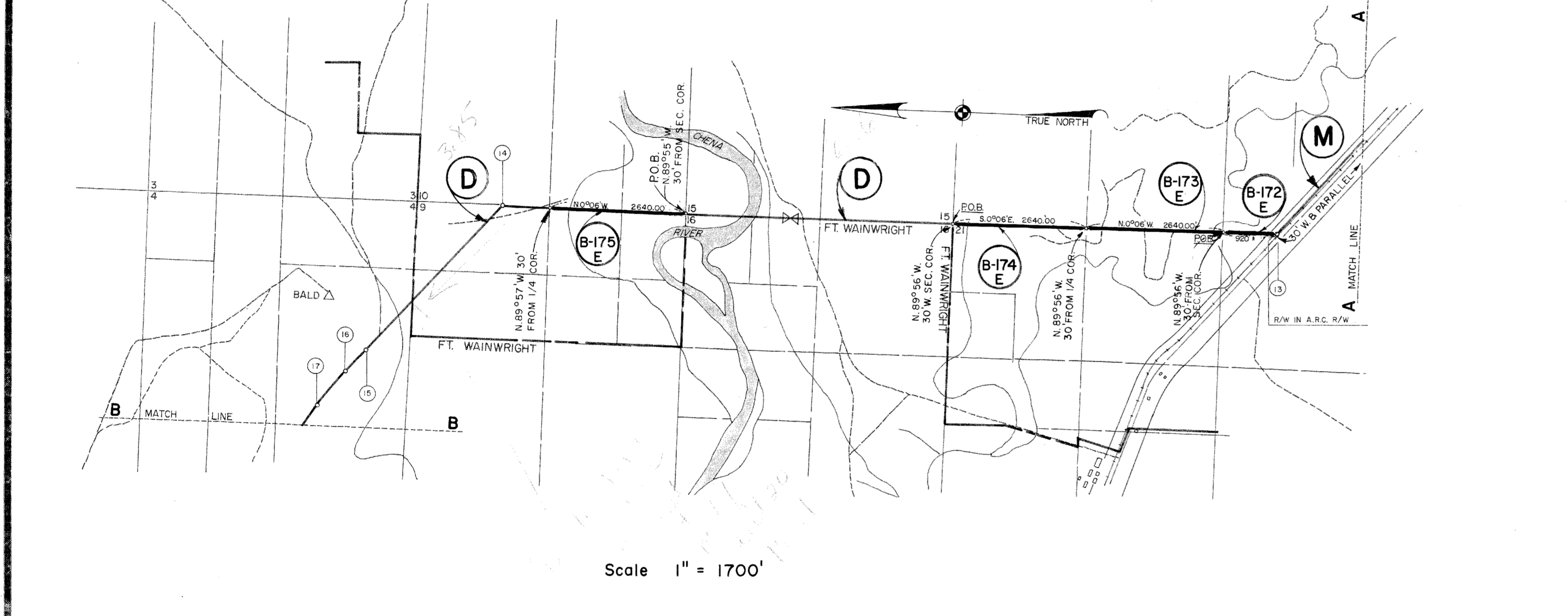
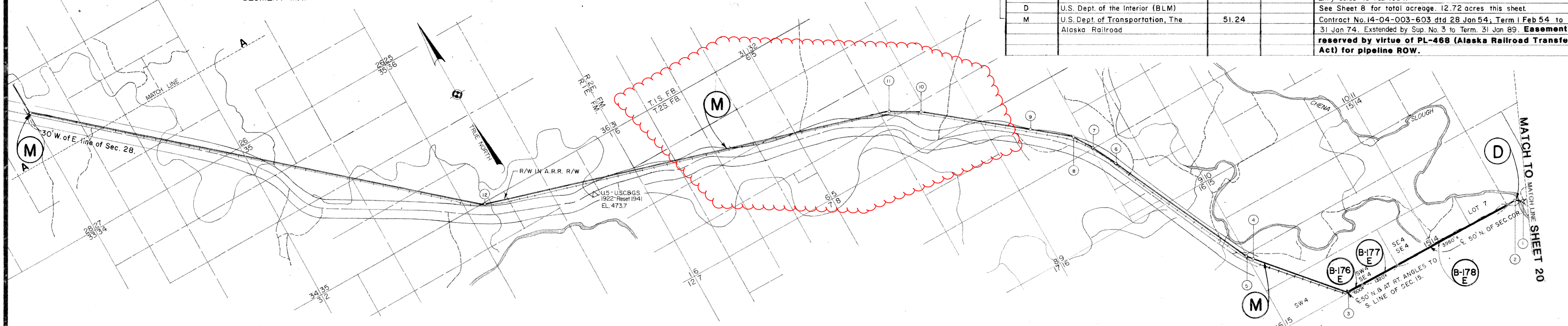
DEPT. OF THE ARMY
 USING SERVICE USARL
 LOCATION OF PROJECT
 STATE ALASKA
 STATE JUDICIAL DISTRICT FOURTH
 DIVISION NORTH PACIFIC
 DISTRICT ALASKA
 ALASKAN COMMAND
 MILES OF
 MILES OF
 TRANSPORTATION FACILITIES
 RAILROADS THE ALASKA RAILROAD
 STATE ROADS RICHARDSON & STEESE HWYS
 FEDERAL ROADS
 AIR LINES ALASKA, WIEN CONSOLIDATED, PAN AMERICAN WORLD AIRWAYS
 ACQUISITION

TOTAL ACRES ACQUIRED
 FEE
 PUBLIC DOMAIN (WITHDRAWAL USE PERMIT)
 USE PERMIT (OTHER THAN P. D.)
 TRANSFER
 LEASE
 LESSER INTERESTS
 SEE SHEET NO. 1

DISPOSAL
 TOTAL ACRES DISPOSED OF
 SOLD
 PUBLIC DOMAIN (WITHDRAWAL USE PERMIT)
 USE PERMIT (OTHER THAN P. D.)
 TRANSFERRED
 LEASES TERMINATED
 LESSER INTERESTS TERM.
 REASSIGNED
 OTHER
 SEE SHEET NO. 1

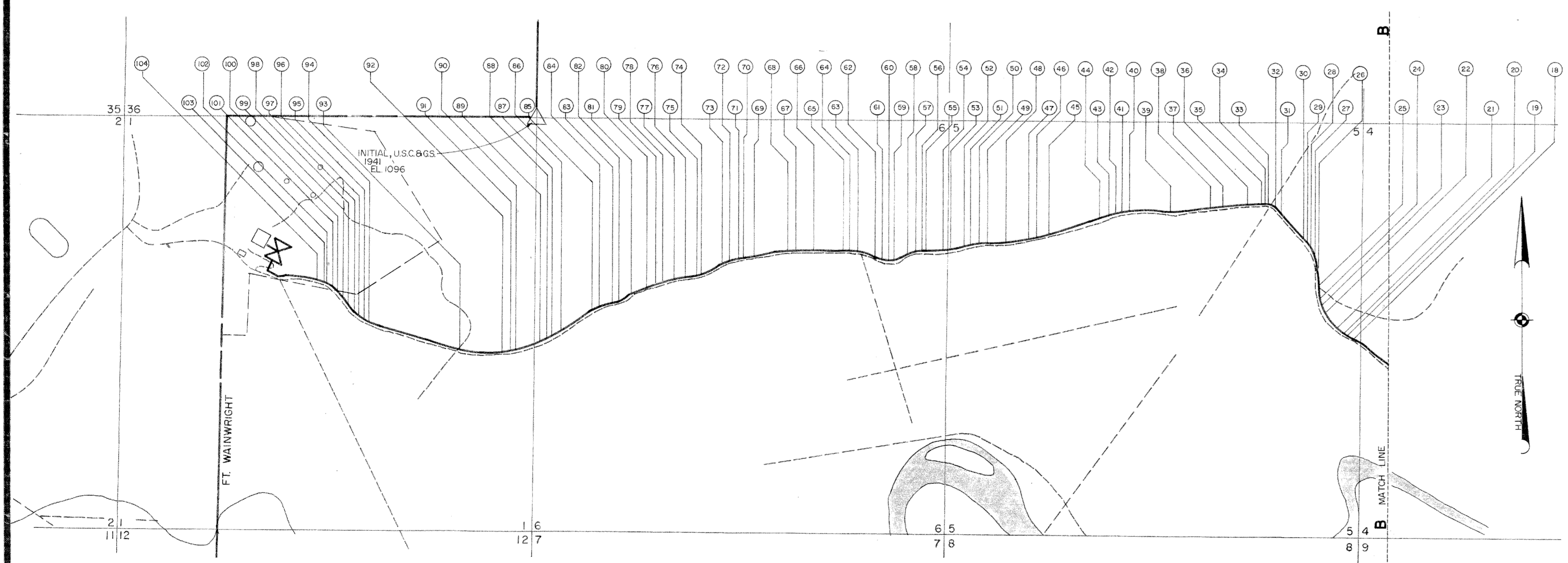
ACQUISITION AUTHORIZATION
 RE-D 5561 DATED 14 NOV 52.
 1 ST END FROM AREN DTD 21 MAR 1974. CONCUR: CINCAL DTD 27 MAR 1974
 1 ST END FROM AFEN DTD 12 MAY 1980
 AF-ZT-EH-PSR LTR DTD 1 MAY 1984
 AFUR-DE-PSR LTR DTD 30 NOV 1988

LEGEND
 EXCEPT FOR THE SPECIAL SYMBOLS SHOWN BELOW MAP SYMBOLS ARE STANDARD IN ARMY MAP SERVICE TECHNICAL MANUAL NO. 23.
 RESERVATION LINE
 RESERVATION LINE (Actual Survey)
 TRACT BOUNDARY LINE
 TRACT NUMBER
 CONTOUR LINE
 DISPOSAL



PI. LEGEND

| No. | Sta | Angle | No. | Sta | Angle | No. | Sta | Angle | No. | Sta | Angle |
|-----|------------|--------------|-----|------------|--------------|-----|------------|-------------|-----|------------|--------------|
| 1 | 3340+183.2 | ▲45°00' R | 27 | 10069+85.5 | ▲18°20'00" L | 53 | 10181+82.5 | ▲0°25'00" L | 79 | 10204+11.5 | ▲11°27'00" L |
| 2 | 3340+206 | ▲45°00' L | 28 | 10070+375 | ▲11°24'30" L | 54 | 10181+28.5 | ▲0°24'30" R | 80 | 10187+23.5 | ▲0°25'00" L |
| 3 | 3401+67.2 | ▲52°58'00" R | 29 | 10071+375 | ▲0°23'30" L | 55 | 10181+27.5 | ▲0°24'30" R | 81 | 10187+28.5 | ▲0°25'00" L |
| 4 | 3434+441 | ▲0°25'00" L | 30 | 10072+22.5 | ▲0°23'30" R | 56 | 10181+27.5 | ▲0°24'30" L | 82 | 10187+28.5 | ▲0°25'00" L |
| 5 | 3434+192.2 | ▲1°33'40" R | 31 | 10073+11.5 | ▲0°23'00" R | 57 | 10181+27.5 | ▲0°24'30" L | 83 | 10187+28.5 | ▲0°25'00" L |
| 6 | 3434+186.1 | ▲0°25'00" L | 32 | 10073+42.5 | ▲0°23'00" R | 58 | 10181+27.5 | ▲0°24'30" L | 84 | 10187+28.5 | ▲0°25'00" L |
| 7 | 3434+183.3 | ▲0°25'00" L | 33 | 10073+22.5 | ▲0°23'00" R | 59 | 10181+27.5 | ▲0°24'30" L | 85 | 10187+28.5 | ▲0°25'00" L |
| 8 | 3500+432.0 | ▲1°40'20" L | 34 | 10080+7.5 | ▲1°25'00" L | 60 | 10181+27.5 | ▲0°24'30" L | 86 | 10187+28.5 | ▲0°25'00" L |
| 9 | 3500+164.6 | ▲0°25'00" L | 35 | 10081+25.5 | ▲0°23'00" R | 61 | 10181+27.5 | ▲0°24'30" L | 87 | 10187+28.5 | ▲0°25'00" L |
| 10 | 3549+159.6 | ▲1°17'30" L | 36 | 10081+25.5 | ▲0°23'00" R | 62 | 10181+27.5 | ▲0°24'30" L | 88 | 10187+28.5 | ▲0°25'00" L |
| 11 | 3559+169.6 | ▲40°23'15" L | 37 | 10081+11.5 | ▲0°23'40" R | 63 | 10181+27.5 | ▲0°24'30" L | 89 | 10187+28.5 | ▲0°25'00" L |
| 12 | 3559+1341 | ▲24°27'30" R | 38 | 10081+7.5 | ▲1°25'00" L | 64 | 10181+27.5 | ▲0°24'30" L | 90 | 10187+28.5 | ▲0°25'00" L |
| 13 | 3559+159.6 | ▲1°17'30" L | 39 | 10081+25.5 | ▲0°23'00" R | 65 | 10181+27.5 | ▲0°24'30" L | 91 | 10187+28.5 | ▲0°25'00" L |
| 14 | 3559+159.6 | ▲1°17'30" L | 40 | 10081+25.5 | ▲0°23'00" R | 66 | 10181+27.5 | ▲0°24'30" L | 92 | 10187+28.5 | ▲0°25'00" L |
| 15 | 3559+159.6 | ▲1°17'30" L | 41 | 10081+25.5 | ▲0°23'00" R | 67 | 10181+27.5 | ▲0°24'30" L | 93 | 10187+28.5 | ▲0°25'00" L |
| 16 | 3559+159.6 | ▲1°17'30" L | 42 | 10081+25.5 | ▲0°23'00" R | 68 | 10181+27.5 | ▲0°24'30" L | 94 | 10187+28.5 | ▲0°25'00" L |
| 17 | 3559+159.6 | ▲1°17'30" L | 43 | 10081+25.5 | ▲0°23'00" R | 69 | 10181+27.5 | ▲0°24'30" L | 95 | 10187+28.5 | ▲0°25'00" L |
| 18 | 3559+159.6 | ▲1°17'30" L | 44 | 10081+25.5 | ▲0°23'00" R | 70 | 10181+27.5 | ▲0°24'30" L | 96 | 10187+28.5 | ▲0°25'00" L |
| 19 | 3559+159.6 | ▲1°17'30" L | 45 | 10081+25.5 | ▲0°23'00" R | 71 | 10181+27.5 | ▲0°24'30" L | 97 | 10187+28.5 | ▲0°25'00" L |
| 20 | 3559+159.6 | ▲1°17'30" L | 46 | 10081+25.5 | ▲0°23'00" R | 72 | 10181+27.5 | ▲0°24'30" L | 98 | 10187+28.5 | ▲0°25'00" L |
| 21 | 3559+159.6 | ▲1°17'30" L | 47 | 10081+25.5 | ▲0°23'00" R | 73 | 10181+27.5 | ▲0°24'30" L | 99 | 10187+28.5 | ▲0°25'00" L |
| 22 | 3559+159.6 | ▲1°17'30" L | 48 | 10081+25.5 | ▲0°23'00" R | 74 | 10181+27.5 | ▲0°24'30" L | 100 | 10187+28.5 | ▲0°25'00" L |
| 23 | 3559+159.6 | ▲1°17'30" L | 49 | 10081+25.5 | ▲0°23'00" R | 75 | 10181+27.5 | ▲0°24'30" L | | | |
| 24 | 3559+159.6 | ▲1°17'30" L | 50 | 10081+25.5 | ▲0°23'00" R | 76 | 10181+27.5 | ▲0°24'30" L | | | |
| 25 | 3559+159.6 | ▲1°17'30" L | 51 | 10081+25.5 | ▲0°23'00" R | 77 | 10181+27.5 | ▲0°24'30" L | | | |
| 26 | 3559+159.6 | ▲1°17'30" L | 52 | 10081+25.5 | ▲0°23'00" R | 78 | 10181+27.5 | ▲0°24'30" L | | | |



Scale 1" = 1000'

DEPARTMENT OF THE ARMY
 OFFICE OF THE ALASKA DISTRICT ENGINEER
 NORTH PACIFIC DIVISION
 REAL ESTATE
 ALASKAN PETROLEUM PIPELINE SYSTEM
 HAINES - FAIRBANKS DIVISION
 MILITARY RESERVATION
 DRAWN BY: MSS
 CHECKED BY: NLR
 SUBMITTED BY: [Signature]
 RECOMMENDED BY: [Signature]
 APPROVED BY: [Signature] DATE: 15 July 1969
 OFFICE, CHIEF OF ENGINEERS, WASHINGTON 25, D. C.
AUDITED
 INSTALLATION OR PROJECT NO. GI-1-0006
 SHEET 22 OF 22 DRAWING NO. AA-77-3

2 Nov 72 Added Tract M MEZ
 30 Apr 69 Due to Final Audit R.D.
 DATE REVISIONS BY

Scale AS SHOWN
 1700 850 0 1700
 SHEET 22 OF 22 DRAWING NO. AA-77-3
 PREVIOUS EDITION MAY BE USED