

VICINITY/INDEX MAP

NOTES

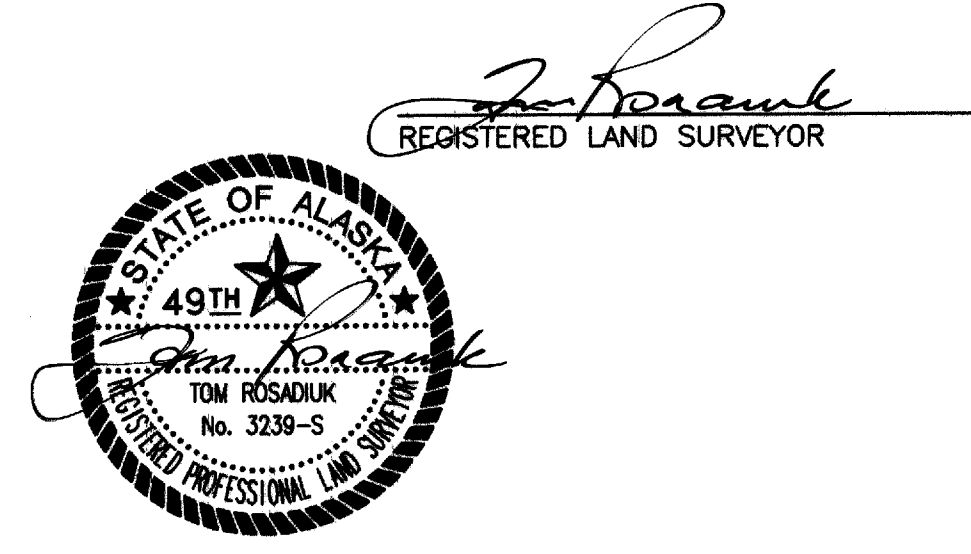
1. THE PURPOSE OF THIS PLAT IS:
 - A. TO DEFINE AND ESTABLISH THE CENTERLINE OF RIGHT-OF-WAY OF BADGER ROAD RECONSTRUCTION, PROJECT NO. RS-0620(6), AND BADGER ROAD/HOLMES CONNECTOR, PROJECT NO. RS-0622(1)/63872. THIS CENTERLINE IS MONUMENTED AS SHOWN AT PC'S, PT'S, POT'S, AND POC'S.
 - B. TO DOCUMENT THE LOCATION OF THE CENTERLINE MONUMENTATION OF THOSE PORTIONS OF OLD BADGER ROAD, PROJECT NO. S-0620(2), WHICH LIE WITHIN THE NEW RIGHT-OF-WAY LIMITS BEFORE THEIR DESTRUCTION BY SUBSEQUENT CONSTRUCTION.
 - C. TO DOCUMENT AND PERPETUATE THE LOCATION OF SELECTED OTHER MONUMENTS, AS SHOWN, WHICH LIE WITHIN THE NEW RIGHT-OF-WAY LIMITS OF BADGER ROAD, BY SETTING NEW MONUMENTS AT THE INTERSECTION OF PROPERTY SIDELINES WITH THE NEW RIGHT-OF-WAY LIMITS.
 - D. TO DOCUMENT THE CONVEYANCES BY WHICH THE STATE OF ALASKA, DEPARTMENT OF TRANSPORTATION AND PUBLIC FACILITIES, ACQUIRED TITLE TO THE NEW RIGHT-OF-WAY.

NOTES CONTINUED ON SHEET 13.

SURVEYOR'S CERTIFICATE

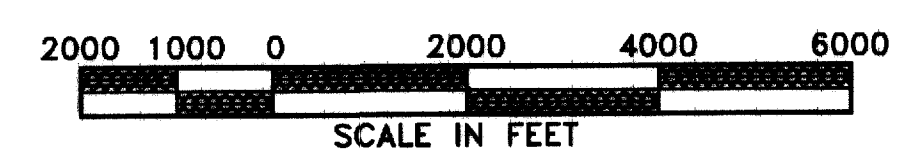
I HEREBY CERTIFY THAT I AM PROPERLY REGISTERED AND LICENSED TO PRACTICE LAND SURVEYING IN THE STATE OF ALASKA, THAT THIS PLAT REPRESENTS A SURVEY MADE BY ME OR UNDER MY DIRECT SUPERVISION, AND THE MONUMENTS SHOWN HEREON ACTUALLY EXIST AS DESCRIBED, AND THAT ALL DIMENSIONS AND OTHER DETAILS ARE CORRECT.

DATE 12 June '99 REGISTRATION NO. 3239-S



**RECORD OF SURVEY
FOR
BADGER ROAD RECONSTRUCTION
PROJECT RS-0620(6)
AND
BADGER ROAD/HOLMES CONNECTOR
PROJECT RS-0622(1)/63872**

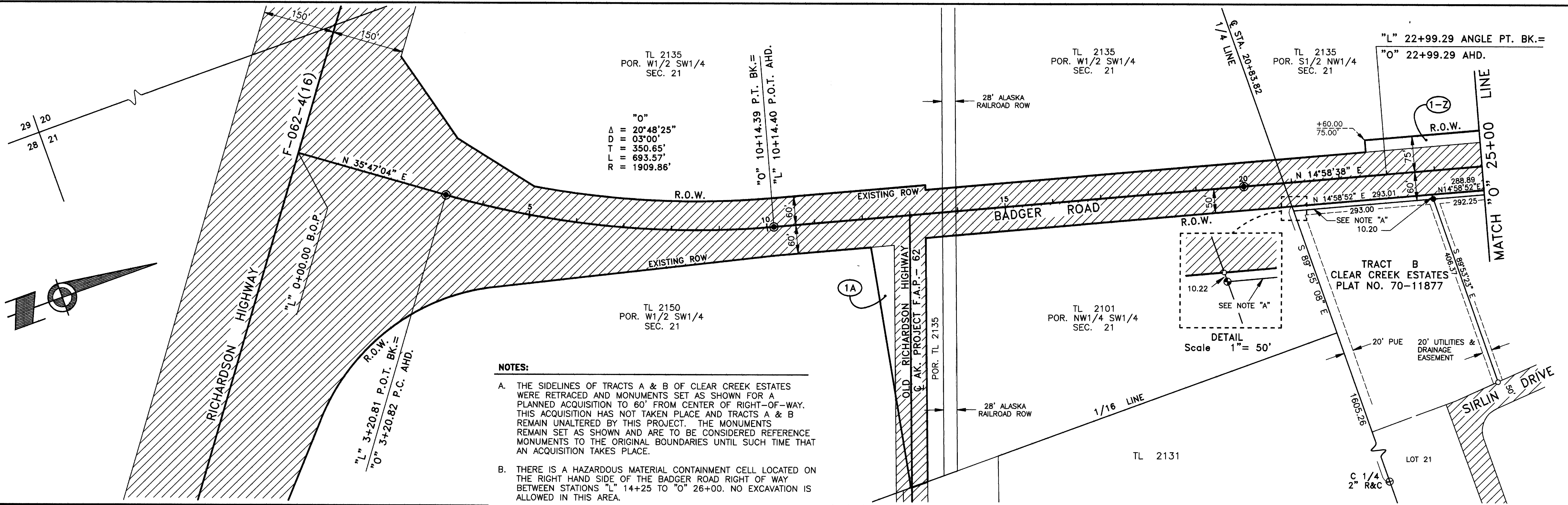
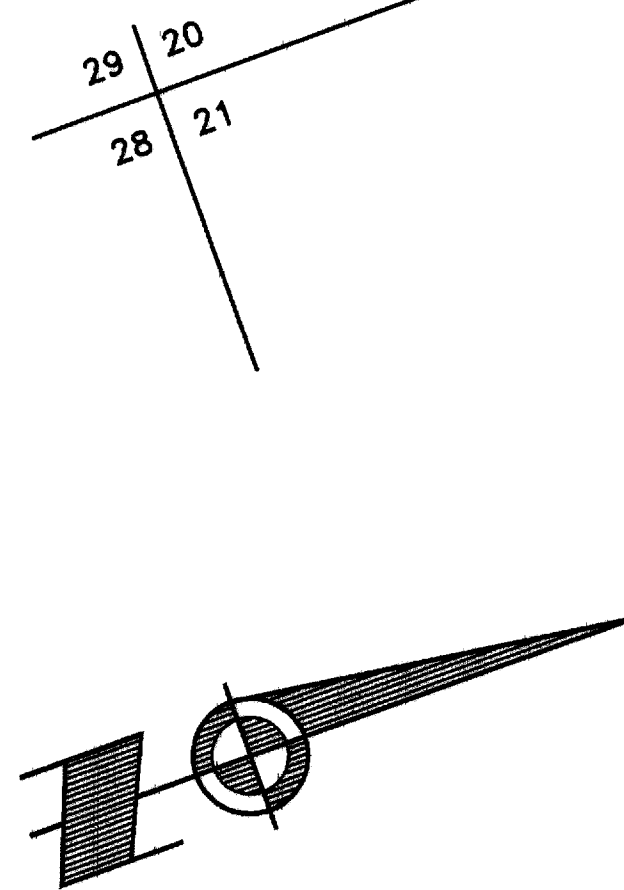
LOCATED WITHIN
SECTIONS 13-16, 21-22, AND 24, T1S, R1E,
SECTIONS 18-20, 29, 32 AND 33, T1S, R2E,
AND SECTION 4, T2S, R2E,
FAIRBANKS MERIDIAN, ALASKA



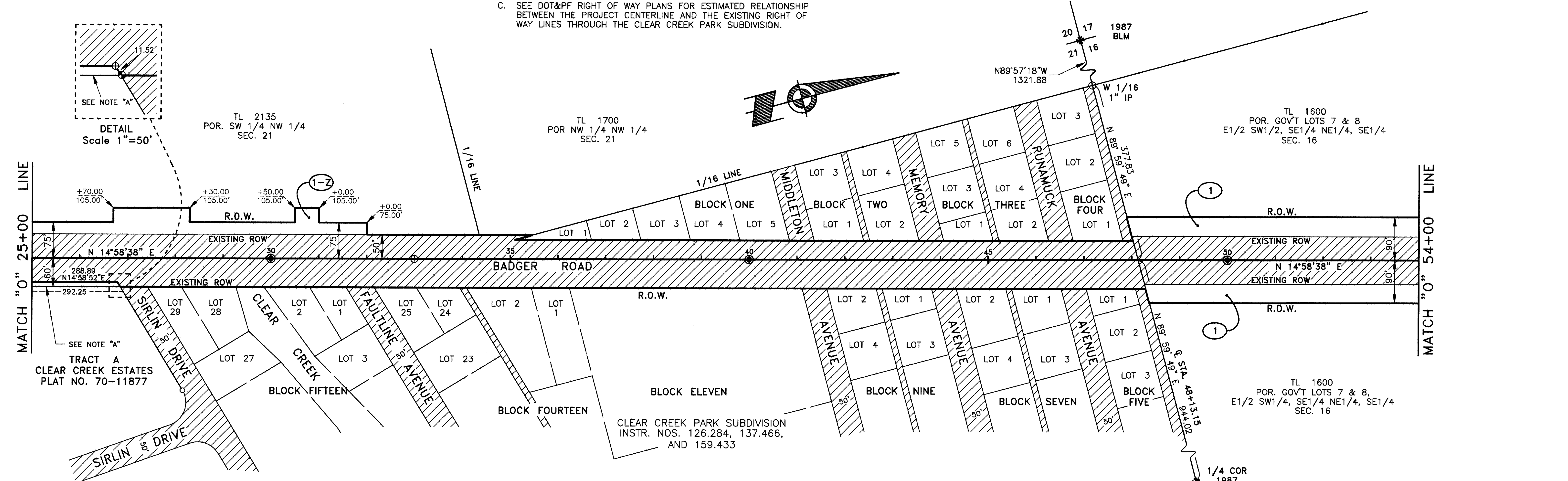
FAIRBANKS RECORDING DISTRICT

FPE Roen	SCALE 1" = 2000'
Civil Electrical Environmental Mechanical Survey	DRAWN BY PHS
ENGINEERS	CHECKED PHS
1028 Aurora Drive, Fairbanks, Alaska 99709-5529	DATE 5/25/94
	PROJ. NO. 911057
	SHEET 1 OF 13

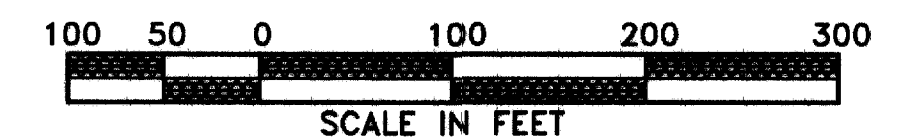
Fairbanks 97-50



- NOTES:**
- THE SIDELINES OF TRACTS A & B OF CLEAR CREEK ESTATES WERE RETRACED AND MONUMENTS SET AS SHOWN FOR A PLANNED ACQUISITION TO 60' FROM CENTER OF RIGHT-OF-WAY. THIS ACQUISITION HAS NOT TAKEN PLACE AND TRACTS A & B REMAIN UNALTERED BY THIS PROJECT. THE MONUMENTS REMAIN SET AS SHOWN AND ARE TO BE CONSIDERED REFERENCE MONUMENTS TO THE ORIGINAL BOUNDARIES UNTIL SUCH TIME THAT AN ACQUISITION TAKES PLACE.
 - THERE IS A HAZARDOUS MATERIAL CONTAINMENT CELL LOCATED ON THE RIGHT HAND SIDE OF THE BADGER ROAD RIGHT OF WAY BETWEEN STATIONS "L" 14+25 TO "O" 26+00. NO EXCAVATION IS ALLOWED IN THIS AREA.
 - SEE DOT&PF RIGHT OF WAY PLANS FOR ESTIMATED RELATIONSHIP BETWEEN THE PROJECT CENTERLINE AND THE EXISTING RIGHT OF WAY LINES THROUGH THE CLEAR CREEK PARK SUBDIVISION.



RECOVERED PROPERTY CORNER TABLE (SEE SHEET 13 NOTES)		
CORNER/MONUMENT DESCRIPTION	RECOVERED MON. POS.	ADJUSTED COR. POS.
SW COR TR B CLEAR CREEK EST, REBAR	20+97.15	50.12 RT.
DOT CENTERLINE MONUMENT, BCM CASING	22+99.29	0.00 RT.
NW COR TR A CLEAR CREEK EST, BCM CONC	26+79.05	50.16 RT.
DOT CENTERLINE MONUMENT, BCM CASING	32+99.45	0.53 RT.

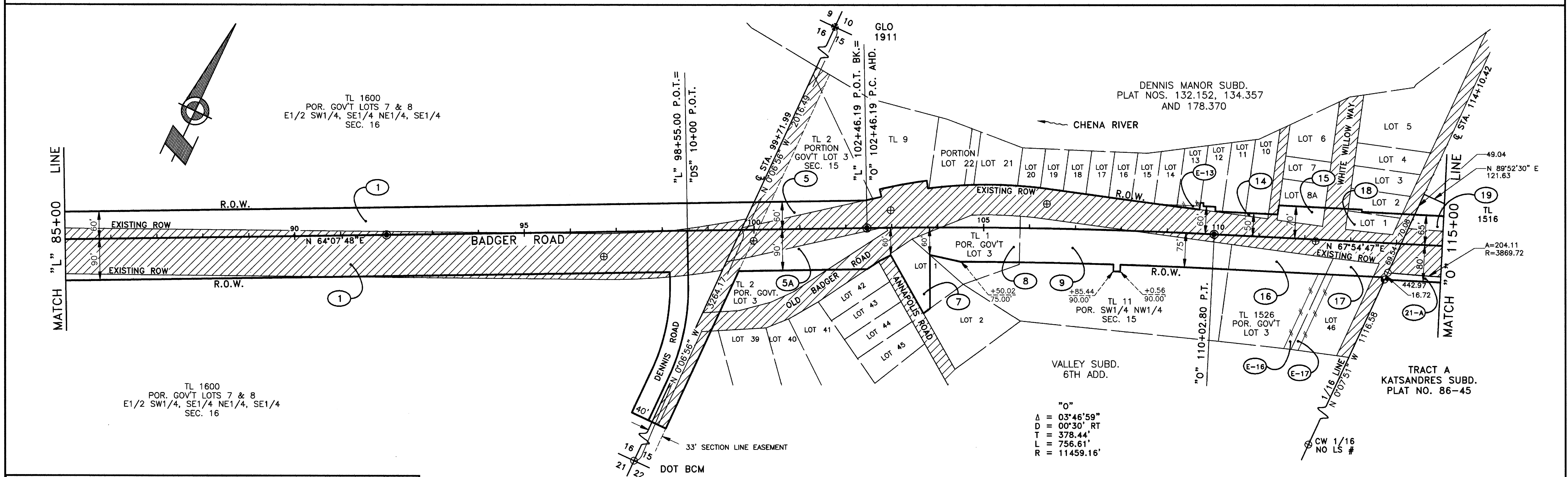
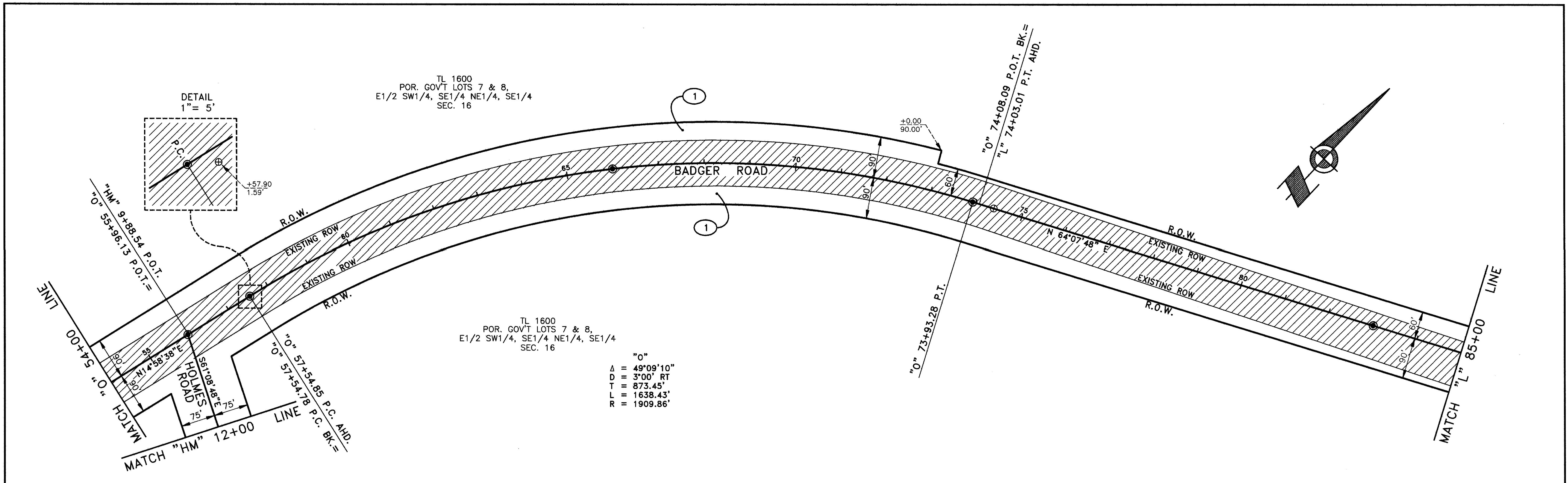


FPE Roen
Civil Electrical Environmental Mechanical Survey
ENGINEERS

SCALE 1" = 100'
DRAWN BY TS
CHECKED PHS
DATE 5/20/94
PROJ. NO. 911057
SHEET 2 OF 13

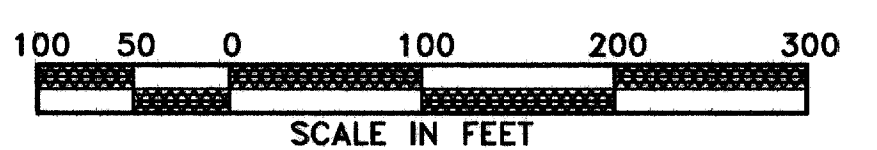
FAIRBANKS RECORDING DISTRICT

Fairbanks 97-50



RECOVERED PROPERTY CORNER TABLE (SEE SHEET 13 NOTES)

CORNER/MONUMENT DESCRIPTION	RECOVERED MON. POS.	ADJUSTED COR. POS.
DOT CENTERLINE MONUMENT, BCM CASING	57+57.90	1.59 RT.
DOT CENTERLINE MONUMENT, BCM CASING	74+36.28	0.00 RT.
DOT CENTERLINE MONUMENT, BCM CASING	96+72.19	54.18 RT.
DOT CENTERLINE MONUMENT, BCM CASING	99+98.85	24.48 RT.
DOT CENTERLINE MONUMENT, BCM CASING	102+98.49	37.92 LT.
DOT CENTERLINE MONUMENT, BCM CASING	106+37.15	53.35 LT.
DOT CENTERLINE MONUMENT, BCM CASING	112+24.08	3.78 RT.
DOT CENTERLINE MONUMENT, BCM CASING	112+24.08	112+26.23 3.97 RT.
NW COR TR A KATSANDRES SUBD., AL PRIM, 5082S	113+84.37	64.62 RT. 113+84.42 64.49 RT.



FPE Roen
 Civil Electrical Environmental Mechanical Survey
ENGINEERS

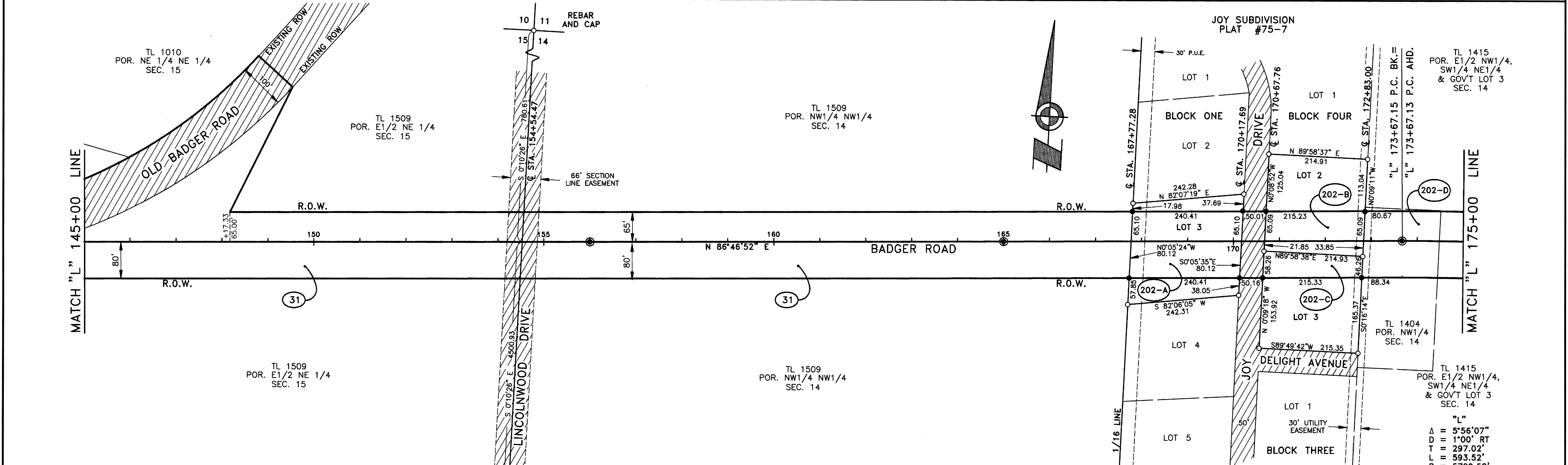
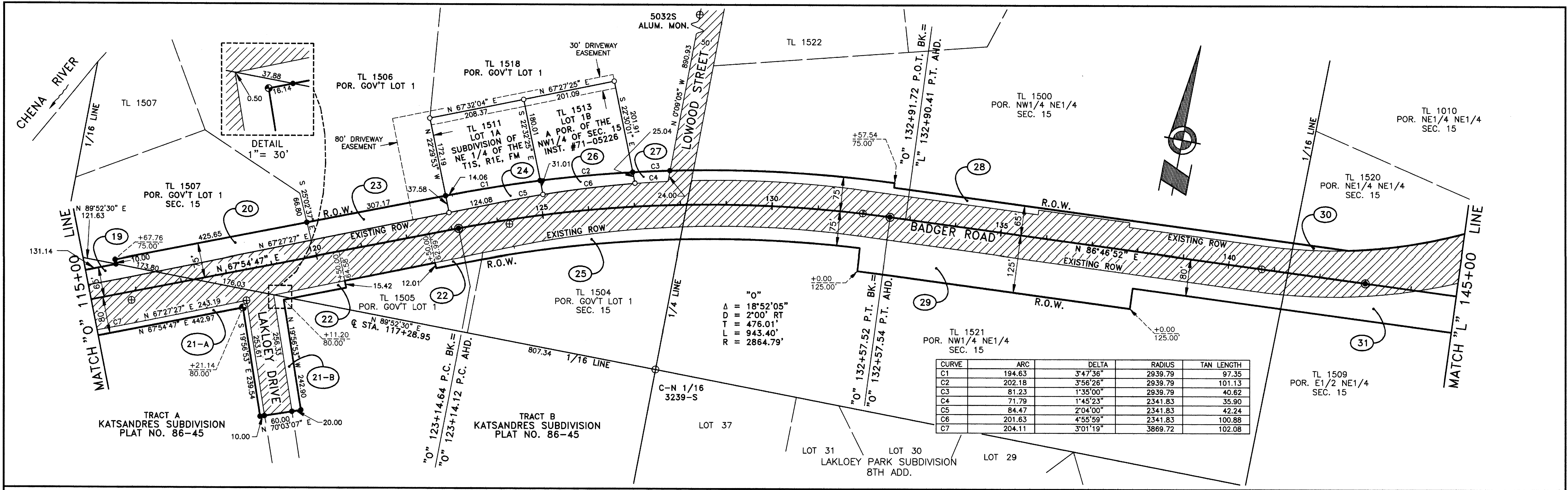
SCALE 1" = 100'
 DRAWN BY TS, PHS
 CHECKED PHS
 DATE 5/20/94
 PROJ. NO. 911057
 SHEET 3 OF 13

1028 Aurora Drive, Fairbanks, Alaska 99709-5529

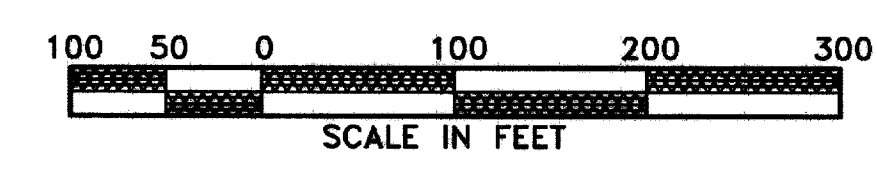
FAIRBANKS RECORDING DISTRICT

Fairbanks 97-50

K:\911057\DWG\157503 Mod Jun 11 17:03:15 1997



RECOVERED PROPERTY CORNER TABLE (SEE SHEET 13 NOTES)			
CORNER/MONUMENT DESCRIPTION	RECOVERED MON. POS.	ADJUSTED COR. POS.	
DOT CENTERLINE MONUMENT, BCM CASING	115+86.20	18.27 RT.	115+88.07 18.25 RT.
NE COR TR A KATSANDRES SUBD, AL PRIM 5082S	118+31.66	66.23 RT.	118+31.66 66.32 RT.
SW COR TL 1511, REBAR & CAP	123+00.84	38.42 LT.	123+00.85 37.42 LT.
DOT CENTERLINE MONUMENT, BCM CASING	124+25.17	9.45 RT.	124+25.19 9.45 RT.
SW COR TL 1513, REBAR & CAP	125+05.90	46.08 LT.	125+06.05 44.08 LT.
SE COR TL 1513, REBAR & CAP	127+04.21	50.85 LT.	127+04.30 50.22 LT.
DOT CENTERLINE MONUMENT, BCM CASING	131+97.87	.62 LT.	131+98.04 0.62 LT.
DOT CENTERLINE MONUMENT, BCM CASING	140+72.94	.04 RT.	



FPE Roen
Civil Electrical Environmental Mechanical Survey
ENGINEERS

1028 Aurora Drive, Fairbanks, Alaska 99709-5529

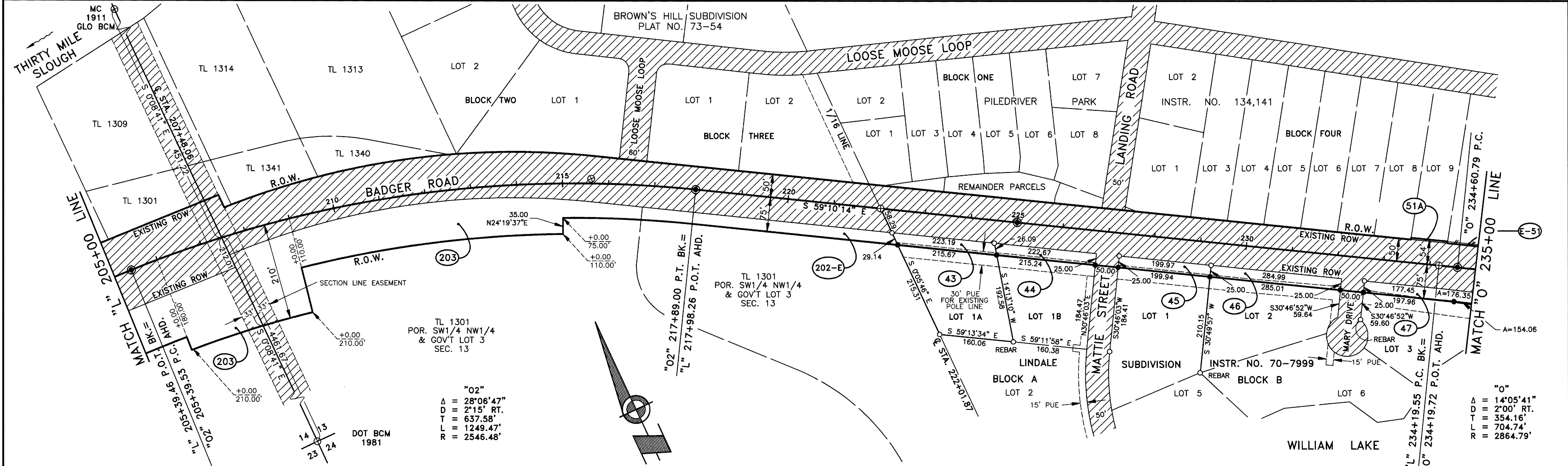
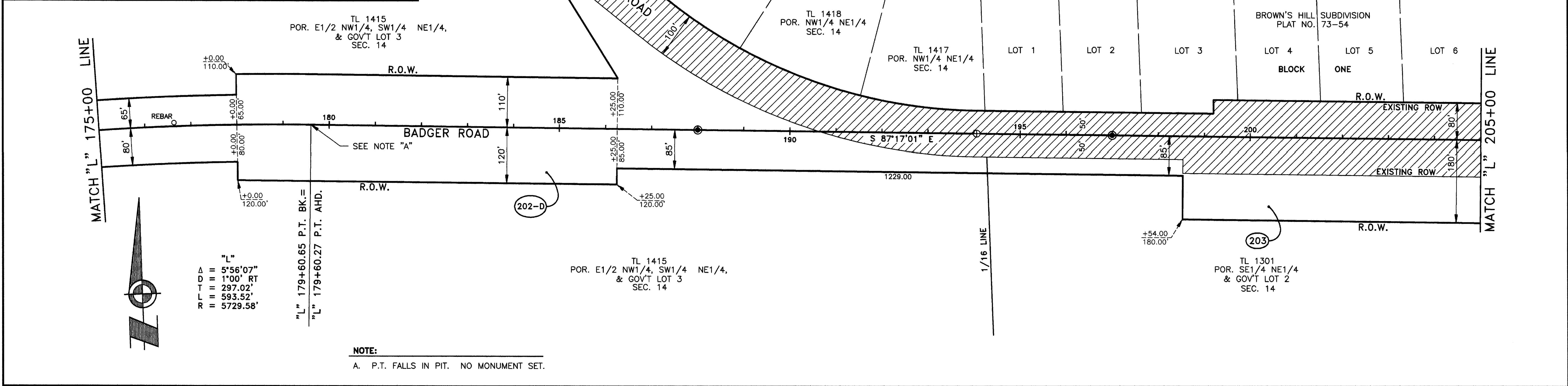
FAIRBANKS RECORDING DISTRICT

SCALE 1"=100'
DRAWN BY TS,PHS
CHECKED PHS
DATE 5/19/94
PROJ.NO. 911057
SHEET 4 OF 13

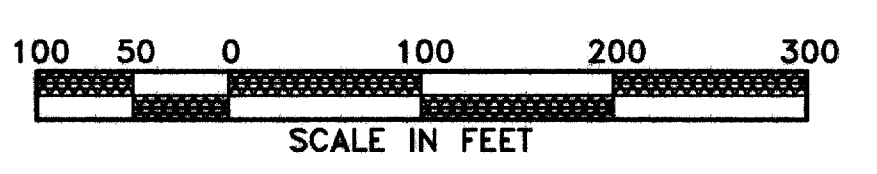
K:\1911057\DWG\1911057.dwg WED Jun 11 17:05:11 1997

Fairbanks 97-50

RECOVERED PROPERTY CORNER TABLE (SEE SHEET 13 NOTES)		
CORNER/MONUMENT DESCRIPTION	RECOVERED MON. POS.	ADJUSTED COR. POS.
FOUND REBAR AT PROPOSED P.I.	176+63.89	7.69 LT.
DOT CENTERLINE MONUMENT, BCM CASING	194+05.97	0.00 RT.



RECOVERED PROPERTY CORNER TABLE (SEE SHEET 13 NOTES)		
CORNER/MONUMENT DESCRIPTION	RECOVERED MON. POS.	ADJUSTED COR. POS.
DOT CENTERLINE MONUMENT, BCM CASING	215+61.97	10.15 LT.
CENTERLINE/16TH LINE, COPPERWELD	222+01.85	0.02 LT.
N COR LOT 1A BLK A LINDALE SUBD, R&C 7055	222+31.82	49.98 RT.
N COR LOT 1B BLK A LINDALE SUBD, R&C 7055	224+55.01	49.98 RT.
N COR LOT 1 BLK B LINDALE SUBD, R&C 7055	227+27.68	49.97 RT.
N COR LOT 2 BLK B LINDALE SUBD, REBAR	229+27.65	49.99 RT.
N COR LOT 3 BLK B LINDALE SUBD, REBAR	232+62.63	49.98 RT.
DOT CENTERLINE MONUMENT, BCM CASING	234+19.93	0.00 LT.



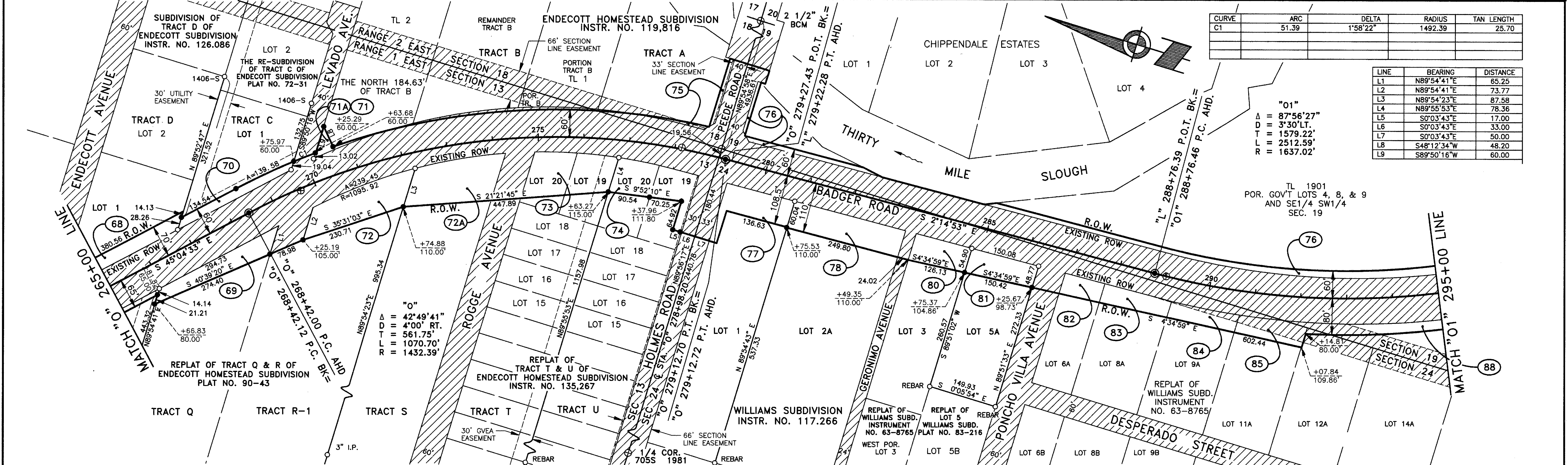
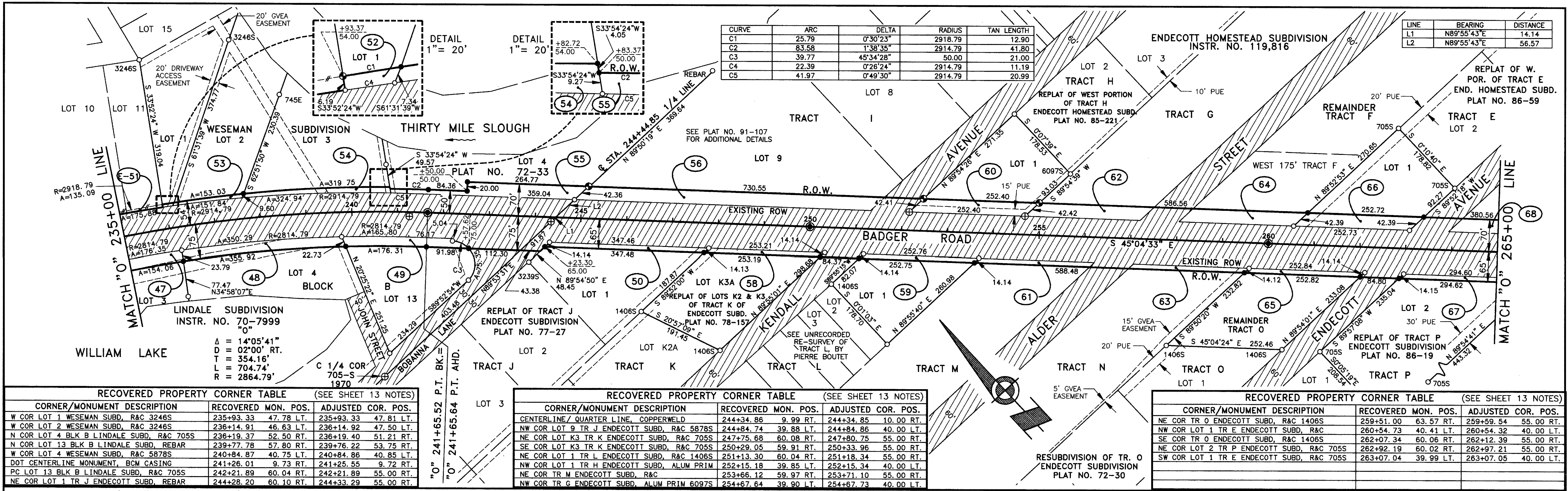
FPE Roen
 Civil Electrical Environmental Mechanical Survey
 ENGINEERS

1028 Aurora Drive, Fairbanks, Alaska 99709-5529

SCALE 1"=100'
 DRAWN BY TS, PHS
 CHECKED PHS
 DATE 1/16/95
 PROJ. NO. 911057
 SHEET 5 OF 13

K:\911057\DWG\157505.dwg 11:17:06 AM 05/1997

Fairbanks 97-50



CORNER/MONUMENT DESCRIPTION	RECOVERED MON. POS.	ADJUSTED COR. POS.	CORNER/MONUMENT DESCRIPTION	RECOVERED MON. POS.	ADJUSTED COR. POS.
SE COR LOT 2 TR P ENDECOTT SUBD, R&C 705S	265+86.81 60.01 RT.	265+91.82 55.00 RT.	DOT CENTERLINE MONUMENT, BCM CASING	278+14.87 3.36 LT.	278+15.21 3.32 LT.
NW COR LOT 1 TR C ENDECOTT SUBD, R&C	266+87.61 40.00 LT.	266+87.61 40.00 LT.	DOT SECTION CORNER, BCM CASING	278+99.13 19.54 LT.	
SW COR LOT 1 TR C ENDECOTT SUBD, R&C 1406S	269+64.14 45.28 LT.	269+64.22 45.37 LT.	NE COR LOT 2A WILLIAMS SUBD, REBAR	280+77.83 49.04 RT.	280+77.79 50.00 RT.
DOT CENTERLINE MONUMENT, BCM CASING	269+65.82 4.67 RT.	269+65.70 4.69 RT.	NE COR LOT 5A WILLIAMS SUBD, R&C	284+77.37 50.21 RT.	284+77.38 50.00 RT.
NW COR TR B ENDECOTT SUBD, REBAR	270+17.63 49.73 LT.	270+17.61 49.71 LT.	SE COR LOT 5A WILLIAMS SUBD, R&C	286+27.46 49.95 RT.	286+27.46 50.00 RT.
NE COR TR S ENDECOTT SUBD, R&C ARCTURUS	272+24.76 29.99 RT.	272+22.01 34.70 RT.	DOT CENTERLINE MONUMENT, BCM CASING	289+02.62 0.21 RT.	289+01.47 0.19 RT.
NE COR TR U ENDECOTT SUBD, R&C	276+79.96 39.60 RT.	276+80.23 38.30 RT.			

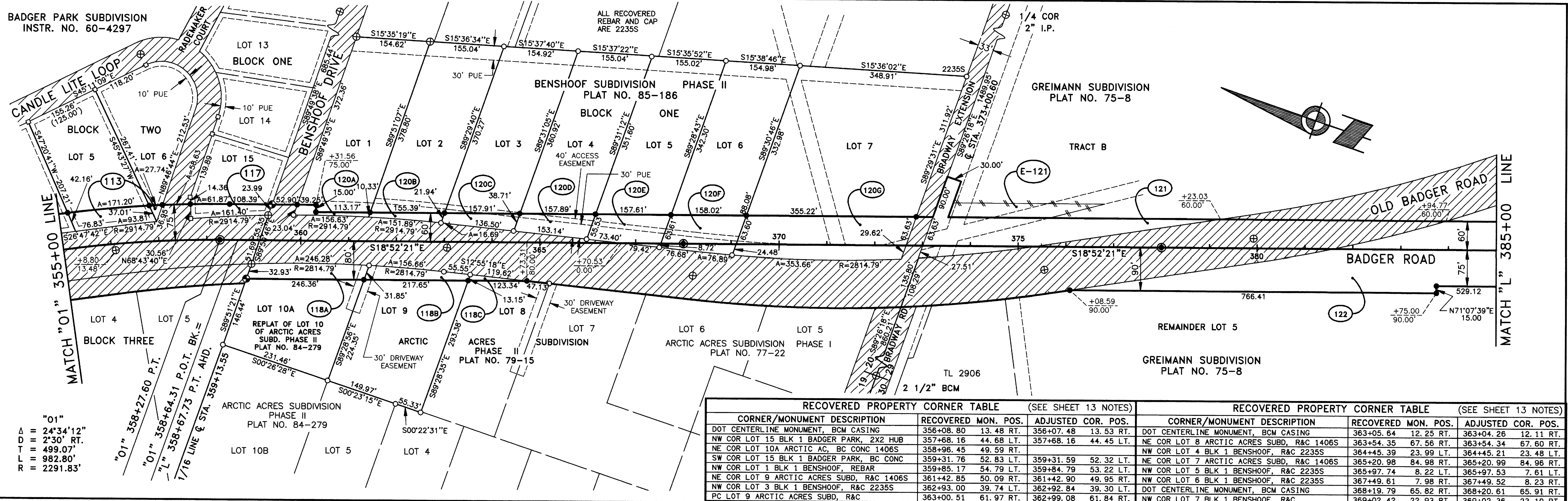
FPE Roen
Civil Electrical Environmental Mechanical Survey
ENGINEERS

SCALE 1" = 100'
DRAWN BY TS, PHS
CHECKED PHS
DATE 5/20/94
PROJ. NO. 911057
SHEET 6 OF 13

FAIRBANKS RECORDING DISTRICT
1028 Aurora Drive, Fairbanks, Alaska 99709-5529
Fairbanks 97-50

K: 911057.DWG, 1575206 Wed Jun 11 17:11:10 1997

BADGER PARK SUBDIVISION
INSTR. NO. 60-4297



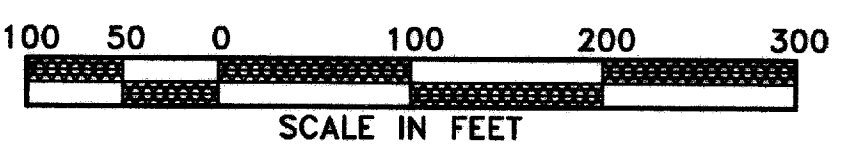
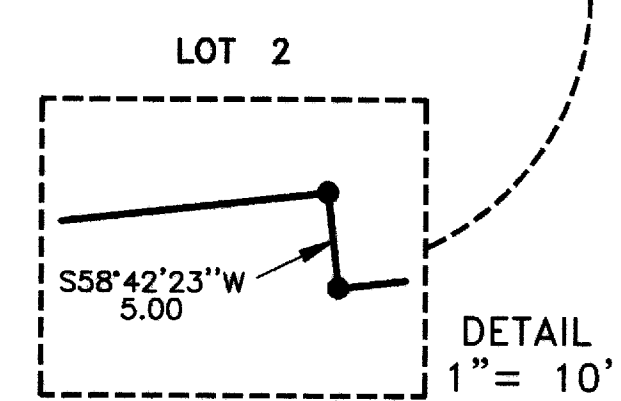
"01"
A = 24'34"12"
D = 2'30" RT.
R = 489.07'
T = 982.80'
L = 2291.85'

"01" 358+27.60 P.T.
"01" 358+64.31 P.O.T. BK.=
"L" 358+67.73 P.T. AHD.
7/16 LINE & STA. 359+13.55

RECOVERED PROPERTY CORNER TABLE (SEE SHEET 13 NOTES)			RECOVERED PROPERTY CORNER TABLE (SEE SHEET 13 NOTES)		
CORNER/MONUMENT DESCRIPTION	RECOVERED MON. POS.	ADJUSTED COR. POS.	CORNER/MONUMENT DESCRIPTION	RECOVERED MON. POS.	ADJUSTED COR. POS.
DOT CENTERLINE MONUMENT, BCM CASING	356+08.80	13.48 RT.	356+07.48	13.53 RT.	
NW COR LOT 15 BLK 1 BADGER PARK, 2X2 HUB	357+68.16	44.68 LT.	357+68.16	44.45 LT.	
NE COR LOT 10A ARCTIC AC, BC CONC 1406S	358+96.45	49.59 RT.			
SW COR LOT 15 BLK 1 BADGER PARK, BC CONC	359+31.76	52.83 LT.	359+31.59	52.32 LT.	
NW COR LOT 1 BLK 1 BENSHOOF, REBAR	359+85.17	54.79 LT.	359+84.79	53.22 LT.	
NE COR LOT 9 ARCTIC ACRES SUBD, R&C 1406S	361+42.85	50.09 RT.	361+42.90	49.95 RT.	
NW COR LOT 3 BLK 1 BENSHOOF, R&C 2235S	362+93.00	39.74 LT.	362+92.84	39.30 LT.	
PC LOT 9 ARCTIC ACRES SUBD, R&C	363+00.51	61.97 RT.	362+99.08	61.84 RT.	
DOT CENTERLINE MONUMENT, BCM CASING	363+05.64	12.25 RT.	363+04.26	12.11 RT.	
NE COR LOT 8 ARCTIC ACRES SUBD, R&C 1406S	363+54.35	67.56 RT.	363+54.34	67.60 RT.	
NW COR LOT 4 BLK 1 BENSHOOF, R&C 2235S	364+45.39	23.99 LT.	364+45.21	23.48 LT.	
NE COR LOT 7 ARCTIC ACRES SUBD, R&C 1406S	365+20.98	84.98 RT.	365+20.99	84.96 RT.	
NW COR LOT 5 BLK 1 BENSHOOF, R&C 2235S	365+97.74	8.22 LT.	365+97.53	7.61 LT.	
NW COR LOT 6 BLK 1 BENSHOOF, R&C 2235S	367+49.61	7.98 RT.	367+49.52	8.23 RT.	
DOT CENTERLINE MONUMENT, BCM CASING	368+19.79	65.82 RT.	368+20.61	65.91 RT.	
NW COR LOT 7 BLK 1 BENSHOOF, R&C	369+02.42	22.93 RT.	369+02.36	23.10 RT.	

NOTES:
A. RECOVERED TWO MONUMENTED LOCATIONS FOR THE NORTH LINE OF LOT 1A. HELD LINE MONUMENTED BY 31875 AS A BETTER MATCH TO THE ORIGINAL PAPER PLAT OF GREIMANN SUBDIVISION, BASED ON ACTUAL RETRACEMENT AND PROPORTIONATE MEASUREMENT.

"L"
A = 18'55"05"
D = 1'30" LT.
T = 636.40'
L = 1261.21'
R = 3819.72'

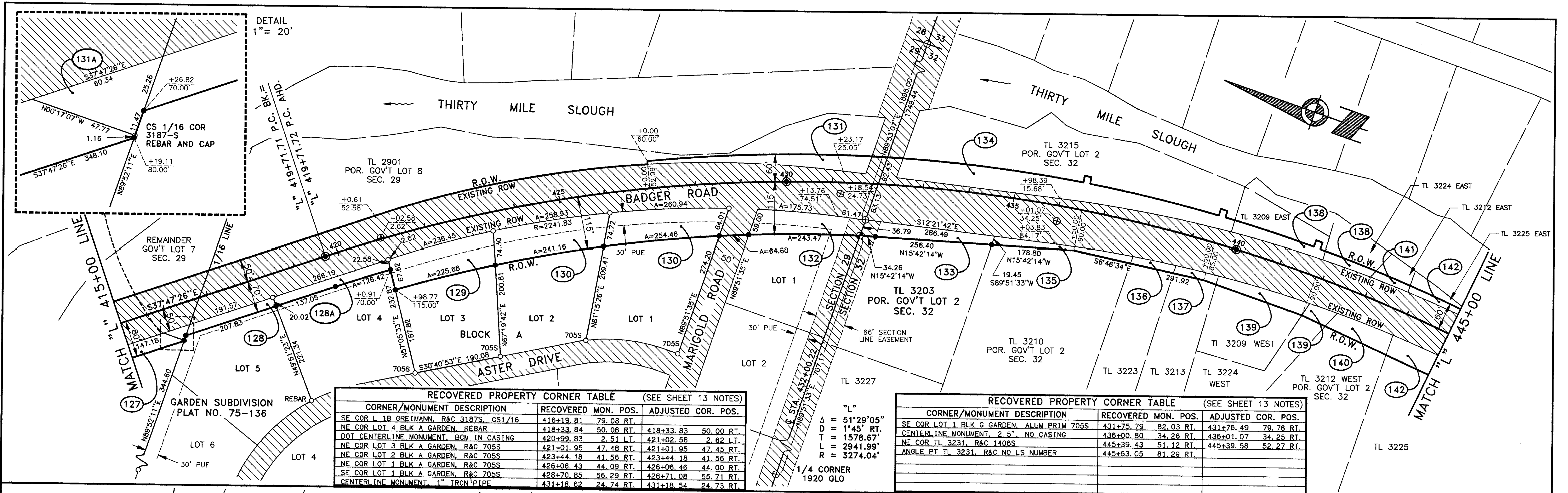


FAIRBANKS RECORDING DISTRICT

FPE Roen
Civil Electrical Environmental Mechanical Survey
ENGINEERS
1028 Aurora Drive, Fairbanks, Alaska 99709-5529

SCALE 1" = 100'
DRAWN BY PHS, TS
CHECKED PHS
DATE 5/19/94
PROJ. NO. 911057
SHEET 8 OF 13

Fairbanks 97-5D

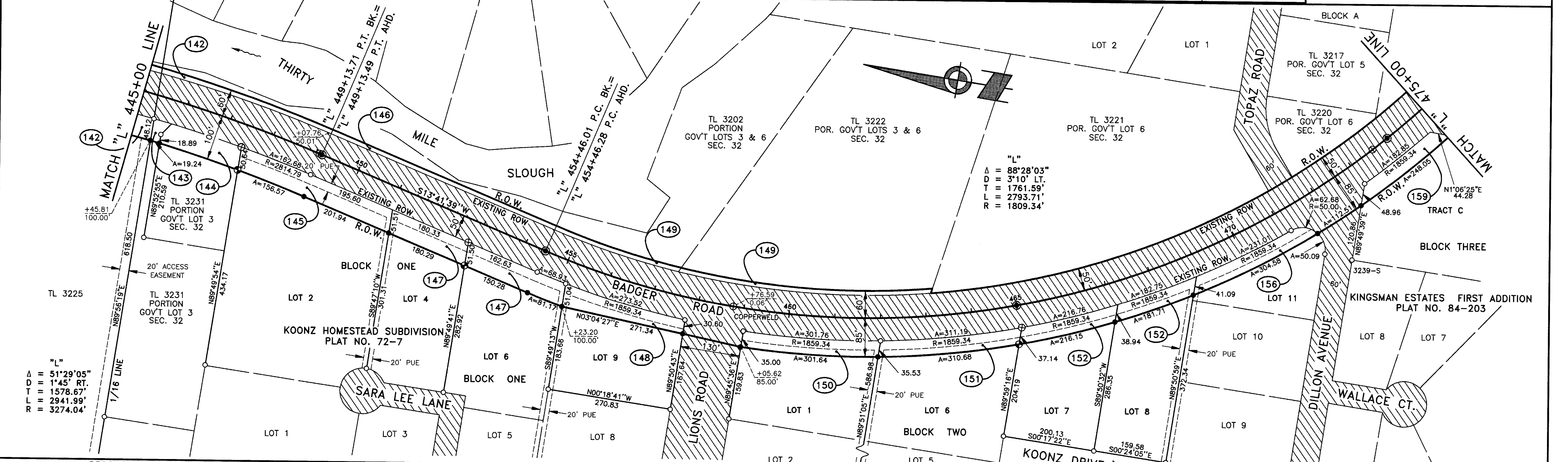


DETAIL
1" = 20'

RECOVERED PROPERTY CORNER TABLE (SEE SHEET 13 NOTES)		
CORNER/MONUMENT DESCRIPTION	RECOVERED MON. POS.	ADJUSTED COR. POS.
SE COR L 1B GREIMANN, R&C 3187S, CS1/16	416+19.81	79.08 RT.
NE COR LOT 4 BLK A GARDEN, REBAR	418+33.84	50.06 RT.
DOT CENTERLINE MONUMENT, BCM IN CASING	420+99.83	2.51 LT.
NE COR LOT 3 BLK A GARDEN, R&C 7055	421+01.95	47.48 RT.
NE COR LOT 2 BLK A GARDEN, R&C 7055	423+44.18	41.56 RT.
NE COR LOT 1 BLK A GARDEN, R&C 7055	426+06.43	44.09 RT.
SE COR LOT 1 BLK A GARDEN, R&C 7055	428+70.85	56.29 RT.
CENTERLINE MONUMENT, 1" IRON PIPE	431+18.62	24.74 RT.

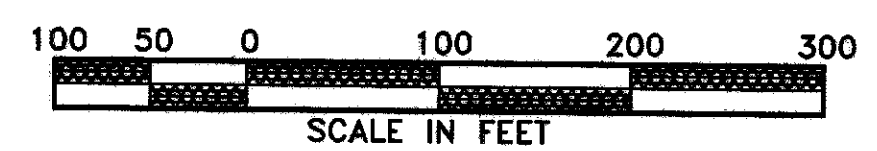
RECOVERED PROPERTY CORNER TABLE (SEE SHEET 13 NOTES)		
CORNER/MONUMENT DESCRIPTION	RECOVERED MON. POS.	ADJUSTED COR. POS.
SE COR LOT 1 BLK G GARDEN, ALUM PRIM 7055	431+75.79	82.03 RT.
CENTERLINE MONUMENT, 2.5" NO CASING	436+00.80	34.26 RT.
NE COR TL 3231, R&C 1406S	445+39.43	51.12 RT.
ANGLE PT TL 3231, R&C NO LS NUMBER	445+63.05	81.29 RT.

"L"
 $\Delta = 51'29.05"$
 $D = 1'45" RT.$
 $T = 1578.67'$
 $L = 2941.99'$
 $R = 3274.04'$



RECOVERED PROPERTY CORNER TABLE (SEE SHEET 13 NOTES)		
CORNER/MONUMENT DESCRIPTION	RECOVERED MON. POS.	ADJUSTED COR. POS.
NE COR LOT 2 BLK 1 KOONZ, BCM 7055 1970	447+42.41	50.53 RT.
PC LOT 2 BLK 2 KOONZ SUBD, REBAR	449+08.04	50.00 RT.
DOT CENTERLINE MONUMENT, BCM IN CASING	449+07.63	.01 LT.
NE COR LOT 6 BLK 1 KOONZ, 2" I.P.	452+83.51	50.52 RT.
DOT CENTERLINE MONUMENT, BCM IN CASING	454+47.71	0.00 RT.
PC LOT 6 BLK 1 KOONZ SUBD, R&C 7055	454+48.01	49.84 RT.

RECOVERED PROPERTY CORNER TABLE (SEE SHEET 13 NOTES)		
CORNER/MONUMENT DESCRIPTION	RECOVERED MON. POS.	ADJUSTED COR. POS.
NE COR LOT 9 BLK 1 KOONZ SUBD, R&C	455+13.36	50.02 RT.
SE COR LOT 9 BLK 1 KOONZ SUBD, R&C	457+79.53	50.17 RT.
NE COR LOT 2 BLK 2 KOONZ SUBD, REBAR	459+05.98	50.20 RT.
NE COR LOT 6 BLK 2 KOONZ SUBD, REBAR	461+99.59	50.21 RT.
NE COR LOT 7 BLK 2 KOONZ, BCM 7055	465+01.95	51.43 RT.
PRC LOT 11 BLK 2 KOONZ SUBD, REBAR	471+16.37	50.49 RT.
NE COR TRACT C KINGSMEN, R&C 3239S	473+01.34	50.54 RT.
COPPERWELD CENTERLINE MONUMENT, KOONZ	473+51.98	.09 RT.



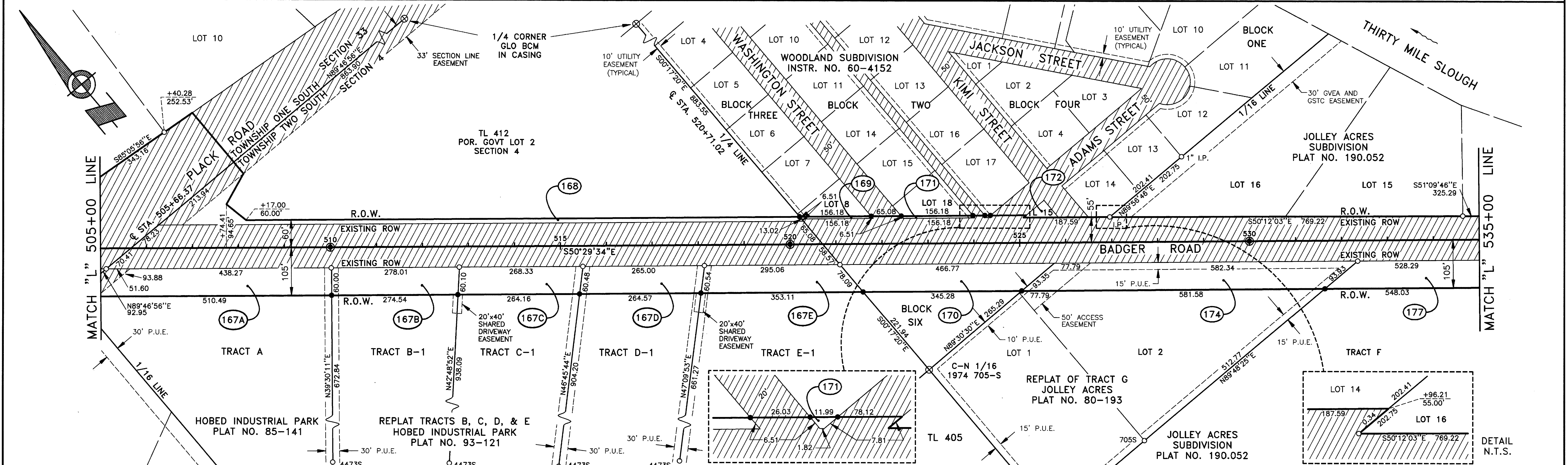
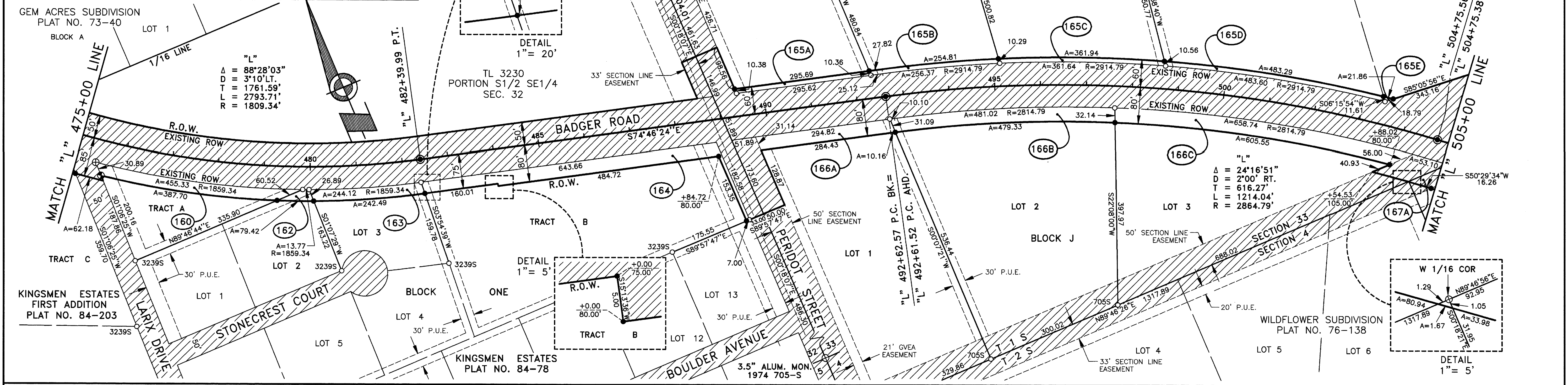
FAIRBANKS RECORDING DISTRICT

FPE Roen
 Civil Electrical Environmental Mechanical Survey
ENGINEERS
 1028 Aurora Drive, Fairbanks, Alaska 99709-5529

SCALE 1" = 100'
 DRAWN BY PHS, TS
 CHECKED PHS
 DATE 3/8/94
 PROJ. NO. 911057
 SHEET 9 OF 13

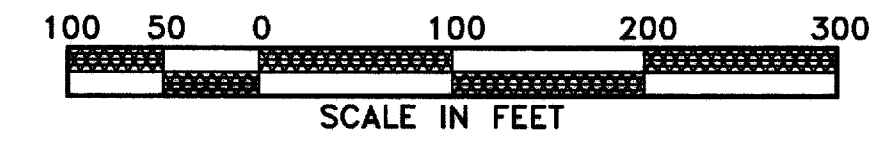
Fairbanks 97-50

RECOVERED PROPERTY CORNER TABLE (SEE SHEET 13 NOTES)			
CORNER/MONUMENT DESCRIPTION	RECOVERED MON. POS.	ADJUSTED COR. POS.	
NW COR TR A KINGSMEN EST., ALUM PRIM NO TOP	475+41.17 50.32 RT.	475+40.93 50.00 RT.	
SE COR TR A KINGSMEN EST., R&C 3239S	479+84.74 49.68 RT.	479+84.02 50.00 RT.	
NW COR L3 BLK 1 KINGSMEN EST., R&C 3239S	479+97.36 49.86 RT.	479+97.42 50.00 RT.	
NW COR TR B KINGSMEN EST., R&C 3239S	482+34.84 49.36 RT.	482+34.97 50.00 RT.	
DOT CENTERLINE MONUMENT, BCM IN CASING	482+38.68 0.00 RT.	482+39.99 0.00 RT.	
SW COR LOT 1 BLK H WRANGELL, R&C 705S	489+41.78 50.17 LT.	489+41.82 50.00 LT.	
SW COR LOT 2 BLK H WRANGELL, R&C 705S	492+37.38 50.23 LT.	492+37.45 50.00 LT.	
NW COR LOT 2 BLK J WRANGELL, R&C 705S	492+63.60 49.94 RT.	492+63.61 50.00 RT.	



RECOVERED PROPERTY CORNER TABLE (SEE SHEET 13 NOTES)			
CORNER/MONUMENT DESCRIPTION	RECOVERED MON. POS.	ADJUSTED COR. POS.	
SW COR LOT 3 BLK H WRANGELL, R&C 705S	495+13.45 50.16 LT.	495+13.49 50.00 LT.	
NW COR LOT 3 BLK J WRANGELL, R&C 705S	497+63.36 49.66 RT.	497+63.27 47.91 RT.	
SE COR LOT 3 BLK H WRANGELL, R&C 705S	498+68.83 50.31 LT.	498+68.93 50.00 LT.	
SE COR LOT 12 BLK H WRANGELL, REBAR	503+44.78 50.10 LT.	503+44.78 50.00 LT.	
WEST 1/16 CORNER, ALUM PRIMARY MON.	504+39.60 104.19 RT.		
CENTERLINE MONUMENT, IRON PIPE IN CASING	504+74.67 0.00 RT.	504+75.38 0.00 RT.	
SE COR LOT 3 BLK J WRANGELL, R&C 705S	505+06.15 50.16 RT.	505+12.21 45.00 RT.	
SE COR LOT 10 BLK H WRANGELL, R&C 705S	506+40.28 -252.53 LT.		

RECOVERED PROPERTY CORNER TABLE (SEE SHEET 13 NOTES)			
CORNER/MONUMENT DESCRIPTION	RECOVERED MON. POS.	ADJUSTED COR. POS.	
E COR TRACT A HOBED IND PARK, R&C 4473S	510+02.12 50.11 RT.	510+02.12 45.00 RT.	
E COR TR B-1 HOBED IND PARK, R&C 4473S	512+79.84 50.03 RT.	512+80.13 45.00 RT.	
E COR TR C-1 HOBED IND PARK, R&C 4473S	515+47.81 50.10 RT.	515+48.46 45.00 RT.	
E COR TR D-1 HOBED IND PARK, R&C 4473S	518+12.77 50.08 RT.	518+13.46 45.00 RT.	
NE COR TR E-1 HOBED IND PARK, R&C 4473S	521+12.81 50.21 RT.	521+08.52 45.00 RT.	
NW COR LOT 16 JOLLEY ACRES, 1" I.P.	526+95.95 54.78 LT.		
SE COR LOT 2 TR G JOLLEY ACRES, R&C 705S	532+29.12 50.23 RT.	532+35.42 45.00 RT.	
SOUTH COR LOT 15 JOLLEY ACRES, R&C 705S	534+65.16 50.87 LT.		



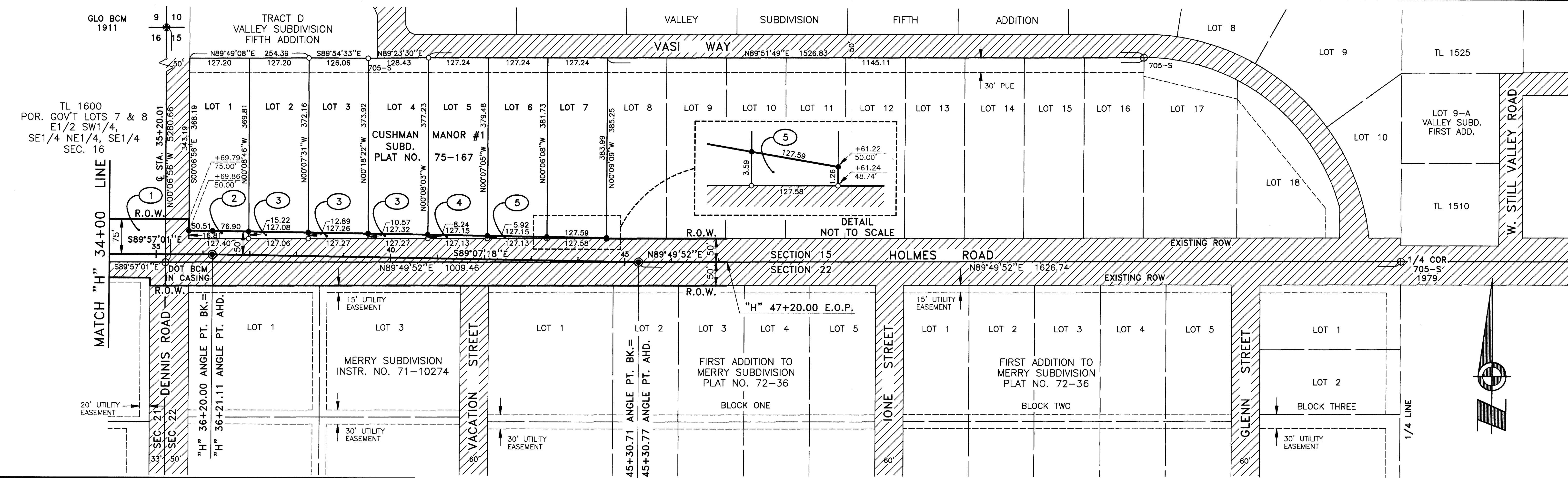
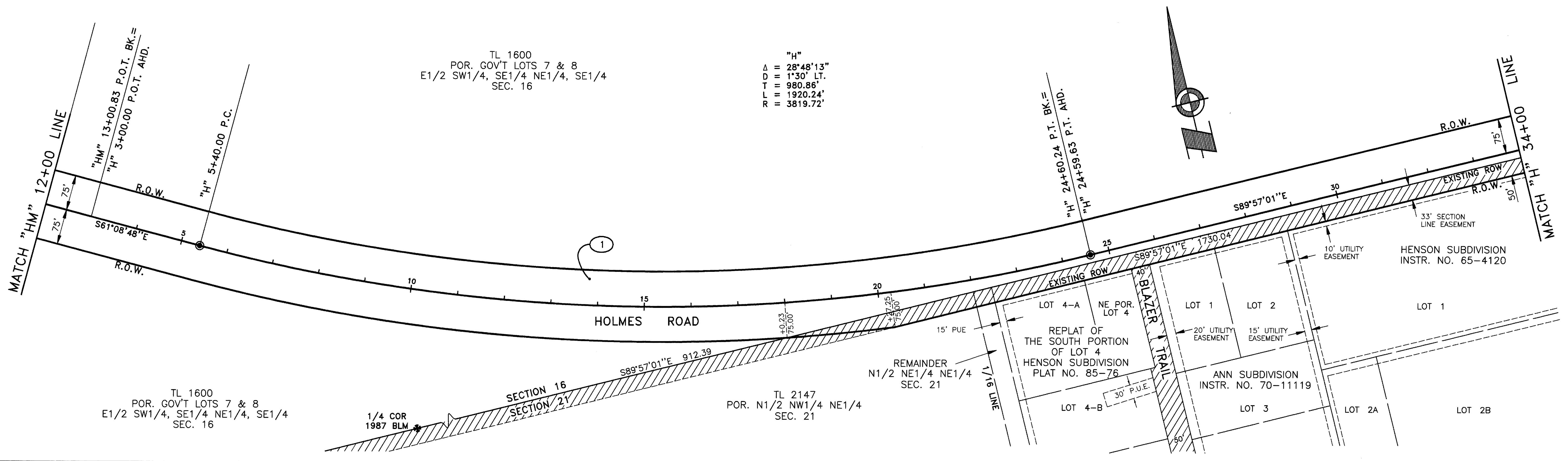
FPE Roen
Civil Electrical Environmental Mechanical Survey
ENGINEERS

1028 Aurora Drive, Fairbanks, Alaska 99709-5529

SCALE 1" = 100'
DRAWN BY PHS, TS
CHECKED PHS
DATE 5/26/94
PROJ. NO. 911057
SHEET 10 OF 13

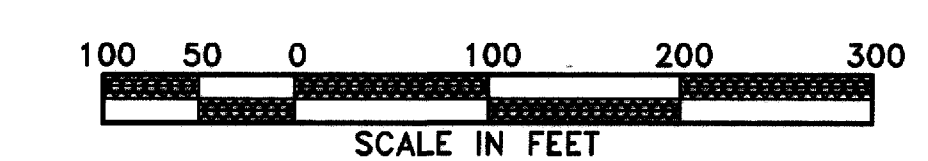
FAIRBANKS RECORDING DISTRICT

Fairbanks 97-50



RECOVERED PROPERTY CORNER TABLE (SEE SHEET 13 NOTES)

CORNER/MONUMENT DESCRIPTION	RECOVERED MON. POS.	ADJUSTED COR. POS.
W COR LOT 2 CUSHMAN MANOR, R&C	36+97.92 34.72 LT.	36+97.92 34.79 LT.
W COR LOT 3 CUSHMAN MANOR, R&C	38+24.95 37.20 LT.	38+24.96 37.11 LT.
W COR LOT 5 CUSHMAN MANOR, R&C	40+79.46 41.83 LT.	40+79.46 41.76 LT.
W COR LOT 7 CUSHMAN MANOR, REBAR	42+06.57 44.07 LT.	42+06.57 44.08 LT.
W COR LOT 8 CUSHMAN MANOR, R&C	43+33.68 46.42 LT.	43+33.68 46.41 LT.
W COR LOT 1 DENNIS ROAD, R&C	44+61.24 48.70 LT.	44+61.24 48.74 LT.



FAIRBANKS RECORDING DISTRICT

FPE Roen
Civil Electrical Environmental Mechanical Survey
ENGINEERS

SCALE 1" = 100'
DRAWN BY PHS
CHECKED PHS
DATE 3/8/94
PROJ. NO. 911057
SHEET 12 OF 13

1028 Aurora Drive, Fairbanks, Alaska 99709-5529

Fairbanks 97-58

ACQUISITION DOCUMENT TABLE
(SEE NOTES 10 & 11)

BADGER ROAD RECONSTRUCTION RS-0620(6)						
PARCEL NO.	BOOK NO.	PAGE NO.	REC. DATE	REMAINDER ACREAGE	REMARKS	
1	762	67	09/04/92	LARGE		
1A	736	138	02/04/92	19.744		
12	811	516	09/02/93	LARGE		
5	747	599	05/13/92	0.829		
5A	747	599	05/13/92	0.272		
7	703	581	05/29/91	0.094	TOTAL ACQ.	
8	717	448	09/05/91	0.116		
9	745	582	04/27/92	1.648		
E-13	736	148	02/04/92	N/A		
14	736	142	02/04/92	0.538		
15	743	462	04/13/92	0.125		
16	747	399	05/12/92	0.697		
E-16	747	395	05/12/92	N/A		
17	743	261	04/10/92	0.407		
E-17	743	264	04/10/92	N/A		
18	739	317	03/06/92	0.126		
19	752	717	06/23/92	0.067		
20	729	784	12/09/91	2.225		
21A	752	717	06/23/92	16.790		
21B	752	717	06/23/92	19.960		
22	743	271	04/10/92	0.796		
23	715	426	08/23/91	11.354		
24	749	625	05/28/92	0.832		
25	710	683	07/24/91	2.215		
26	745	36	04/21/92	0.877		
27	682	874	10/29/90	10.887		
28	734	566	01/21/92	16.333		
29	762	700	09/10/92	10.010		
30	688	805	12/19/90	19.100		
31	734	571	01/21/92	95.446		
E-34	697	146	03/28/92	N/A		
43	738	730	03/03/92	0.796		
44	754	511	07/07/92	0.794		
45	743	257	04/10/92	1.199		
46	761	918	09/02/92	0.968		
47	754	426	07/07/92	1.015		
48	745	201	04/22/92	0.856		
49	740	681	03/18/92	0.867		
50	701	209	05/07/91	0.966		
51A	747	591	05/13/92	3.107		
E-51	757	494	07/30/92	0.592	LOT 10	
E-51	757	494	07/30/92	0.587	LOT 11	
52	714	490	08/15/91	0.999		
53	719	612	09/23/91	1.168		
54	739	254	03/05/92	1.104		
55	699	5	04/17/91	1.357		
56	711	418	07/30/91	2.949		
58	687	203	12/03/90	0.999		
59	754	735	07/09/92	0.700		
60	743	478	04/13/92	0.747		
61	785	375	03/24/93	4.915		
62	744	479	04/16/92	7.114		
63	672	881	08/02/90	5.891		
64	743	470	04/13/92	0.751		
65	742	292	04/03/92	0.954		
66	745	270	04/23/92	0.745		
67	701	864	05/13/91	1.622		
68	742	478	04/06/92	0.839		
69	739	631	03/10/92	3.455		
70	687	107	11/30/90	0.844		
71	687	373	12/04/90	2.890		
71A	914	135	08/11/95	0.022		
72	739	635	03/10/92	5.142		
72A	690	811	01/14/91	4.229		
73	691	735	01/23/91	0.124	LOT 20	
73	691	735	01/23/91	0.052	LOT 19	
74	670	838	07/19/90	0.175	LOT 20	
74	670	838	07/19/90	0.175		
75	742	338	04/03/92	1.322		
76	709	739	07/19/91	14.949		
77	745	160	04/22/92	2.500		
77	818	138	10/13/93	2.500	VACATION DEED	
78	766*	820	10/13/92	3.105		
80	771	117	11/13/92	0.831		
81	734	578	01/21/92	0.917		
82	738	306	02/27/92	0.428		
83	782	849	03/03/93	0.745		
84	702	412	05/17/91	0.785		
85	743	268	04/10/92	0.825		
87	739	321	03/06/92	2.923		
88	782	937	03/04/93	88.763		
89	701	233	03/04/93	1.382		
90	733	748	01/15/92	2.661		
91	746	572	05/04/92	90.303		
91A	743	132	04/09/92	6.548		
104	733	670	01/14/92	1.065		
105	758	127	08/04/92	0.885		
106	787	72	04/07/93	11.694		
107	731	560	12/26/91	0.975		
108	701	599	05/10/91	1.323		
E-109	748	368	05/19/92	N/A		
111	768	631	10/26/92	0.377		
112	768	627	10/26/92	0.463		
113	747	595	05/13/92	0.469		
113	747	595	05/13/92	0.859	LOT 5	
113	747	595	05/13/92	0.875	LOT 6	
117	736	394	02/06/92	0.495		
118A	764	754	09/29/92	0.977		
118B	752	234	06/17/92	1.202		
118C	752	234	06/17/92	1.194		
120A	752	234	06/17/92	1.299		
120B	752	234	06/17/92	1.274		
120C	752	234	06/17/92	1.250		
120D	752	234	06/17/92	1.218		
120E	752	234	06/17/92	1.186		
120F	752	234	06/17/92	1.154		
120G	752	234	06/17/92	2.481		
121	749	992	06/01/92	54.417		
E-121	749	997	06/01/92	N/A		
122	750	8	06/01/92	34.667		
123	750	8	06/01/92	27.919		
124	750	12	06/01/92	28.003		
E-124	750	15	06/01/92	N/A		

BADGER ROAD RECONSTRUCTION RS-0620(6)						
PARCEL NO.	BOOK NO.	PAGE NO.	REC. DATE	REMAINDER ACREAGE	REMARKS	
125	749	989	06/01/92	28.114		
126	754	246	07/06/92	1.374		
127	713	885	08/12/91	1.440		
128	703	164	05/24/91	1.252		
128A	717	786	09/09/91	1.272		
E-128	703	159	05/24/91	N/A		
129	759	218	08/12/92	0.926	LOT 2	
130	754	419	07/07/92	0.985	LOT 1	
130	754	419	07/07/92	1.186		
131	718	574	09/13/91	3.539		
131A	750	19	06/01/92	0.000		
132	729	146	12/02/91	1.055		
133	719	30	09/17/91	1.836		
134	730	279	12/12/91	1.842		
135	718	426	09/12/91	5.657		
136	708	878	07/12/91	2.080		
137	691	141	01/16/91	2.101		
138	747	387	05/12/92	0.253		
138	747	387	05/12/92	0.201	TL 3224 E	
139	747	391	05/12/92	0.598	TL 3209 W	
139	747	391	05/12/92	0.634	TL 3224 W	
140	685	526	11/20/90	6.286		
141	729	790	12/09/91	0.069		
142	758	926	08/10/92	2.840		
143	671	366	07/24/90	1.963		
144	736	820	02/12/92	0.803		
145	750	520	06/04/92	3.114		
146	736	891	02/12/92	0.502		
147	745	197	04/22/92	1.418		
147	745	197	04/22/92	1.206	LOT 4	
148	691	610	01/22/91	1.083		
149	689	545	07/06/90	2.678		
149	689	545	07/06/90	5.855	TL 3222	
150	709	325	07/17/91	1.166		
151	680	158	10/05/90	1.520		
152	672	282	07/30/90	1.115	LOT 8	
152	672	282	07/30/90	1.201		
156	746	557	05/04/92	0.638		
159	674	292	08/16/90	2.836		
160	773	863	12/03/92	0.711		
162	679	254	10/01/90	0.892		
163	679	542	10/03/90	0.780		
164	744	488	04/16/92	3.506		
165A	698	299	04/10/91	3.203		
165B	698	299	04/10/91	3.378		
165C	698	299	04/10/91	4.372		
165D	698	299	04/10/91	3.390		
165E	698	299	04/10/91	3.624		
166A	698	293	04/10/91	4.285		
166B	698	293	04/10/91	4.108		
166C	698	293	04/10/91	3.236		
167A	761	915	09/02/92	4.335		
167B	745	692	04/28/92	4.635		
167C	745	692	04/28/92	5.097		
167D	745	692	04/28/92	4.667		
167E	745	692	04/28/92	4.589		
168	743	473	04/13/92	10.537		
169	660	633	04/20/90	0.158		
170	729	675	12/06/91	0.674		
171	664	57	05/23/90	0.217	LOT 18	
171	664	57	05/23/90	0.421	LOT 17	
174	680	826	10/10/90	2.507		
177	744	481	04/16/92	7.890		
179	748	632	05/20/92	0.674		
180	750	24	06/01/92	0.603		
180	750	24	06/01/92	1.161	LOT 11	
180	750	24	06/01/92	1.648	LOT 10	
181	699	258	04/19/91	1.480		
182	739	251	03/05/92	0.986		
183	697	489	04/01/91	1.719		
185	719	319	09/19/91	1.741		
185	719	319	09/19/91	1.575	LOT 7	
E-185	719	323	09/19/91	N/A		
186	749	856	05/29/92	0.980		
187	758	924	08/10/92	0.172		
187A	742	785	04/06/92	0.689		
188	663	781	05/21/90	1.381		
189	750	189	06/02/92	1.565		
191	729	672	12/06/91	0.460		
192	747	872	05/15/92	0.712		
193	742	281	04/03/92	0.976		
194	745	446	04/24/92	1.111		
195	745	446	04/24/92	0.759		
195	745	446	04/24/92	0.826	LOT 5	
197	750	188	06/02/92	0.929		
E-197	750	191	06/02/92	0.731		
198	748	372	05/19/92	0.941		