

STATE	PROJECT DESIGNATION	YEAR	SHEET NO.	TOTAL SHEETS
ALASKA	FB-14-02/62532	2014	1.01	64

P:\s cushman\civil3d drawing files\3production\So. Cushman Title Sheet

### INDEX OF SHEETS

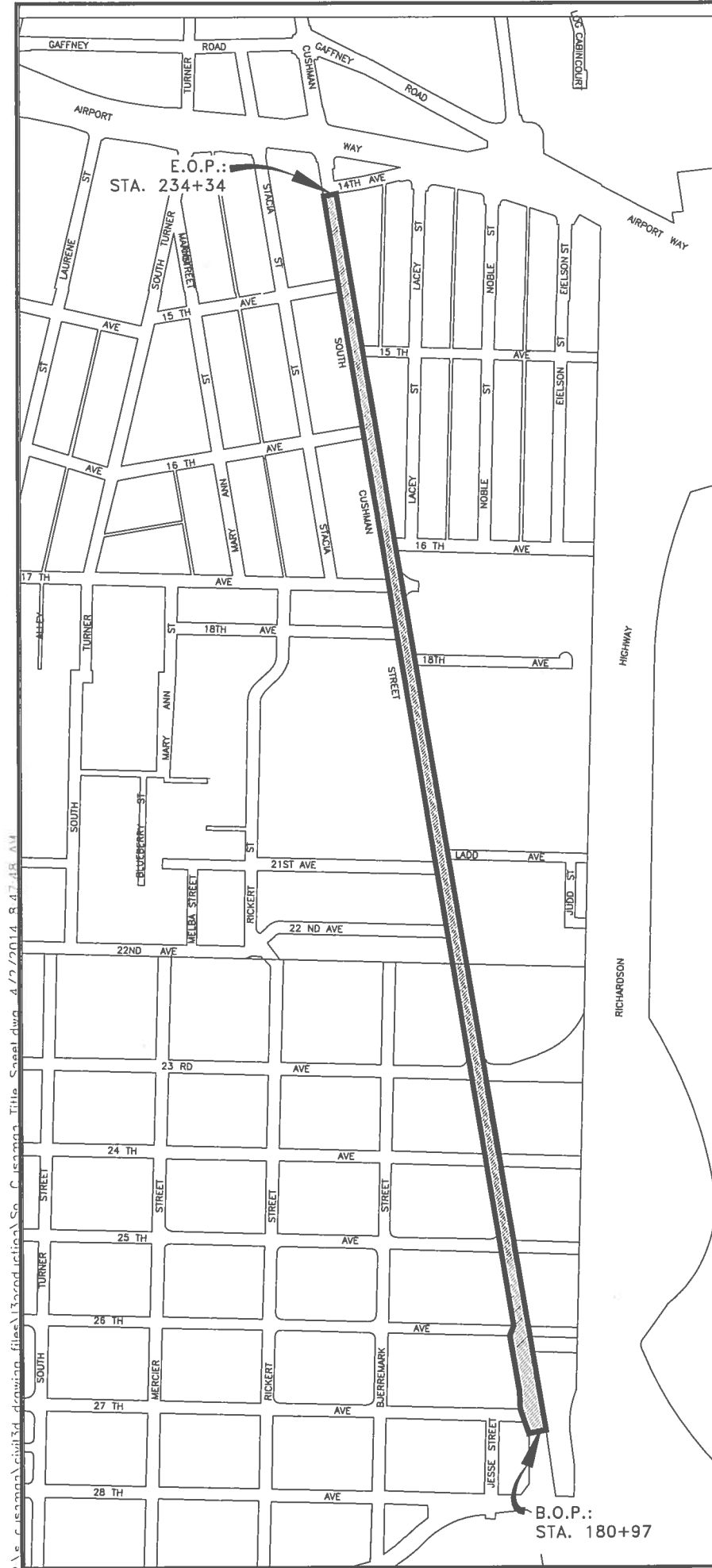
SHEET NO.	DESCRIPTION
1.01	TITLE SHEET
2.01-2.05	SHEET INDEX, NOTES & QUANTITIES
2.06-2.07	SIGN SUMMARY TABLES
3.01-3.03	SURVEY CONTROL
4.01-4.02	ROADWAY TYPICAL SECTIONS
5.01-5.11	PLAN & PROFILE, ROADWAY
6.01-6.10	PLAN & PROFILE, STORM DRAIN & GAS
7.01-7.10	PLAN & PROFILE, WATER & SEWER
8.01-8.10	SIGNING PLANS
9.01-9.08	PROJECT DETAILS
10.01	EROSION & SEDIMENT CONTROL PLAN
11.01	TRAFFIC CONTROL PLAN

## CITY OF FAIRBANKS DEPARTMENT OF PUBLIC WORKS ENGINEERING DIVISION

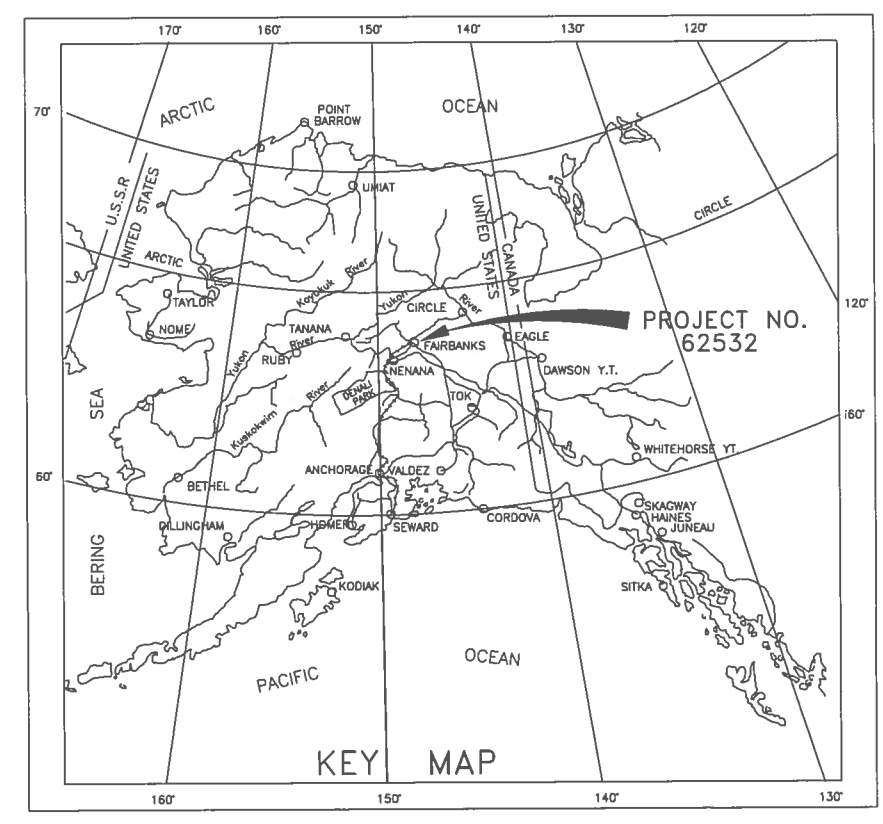
### PROPOSED ROADWAY PROJECT FB-14-02/62532 SOUTH CUSHMAN SIDEWALK AND DRAINAGE IMPROVEMENTS

#### PROJECT SUMMARY

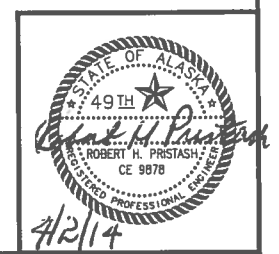
WIDTH OF PAVEMENT	VARIABLE
LENGTH OF PAVEMENT	0
LENGTH OF GRADING	5,337'
LENGTH OF PROJECT	5,337'
ADT 2012	9,555

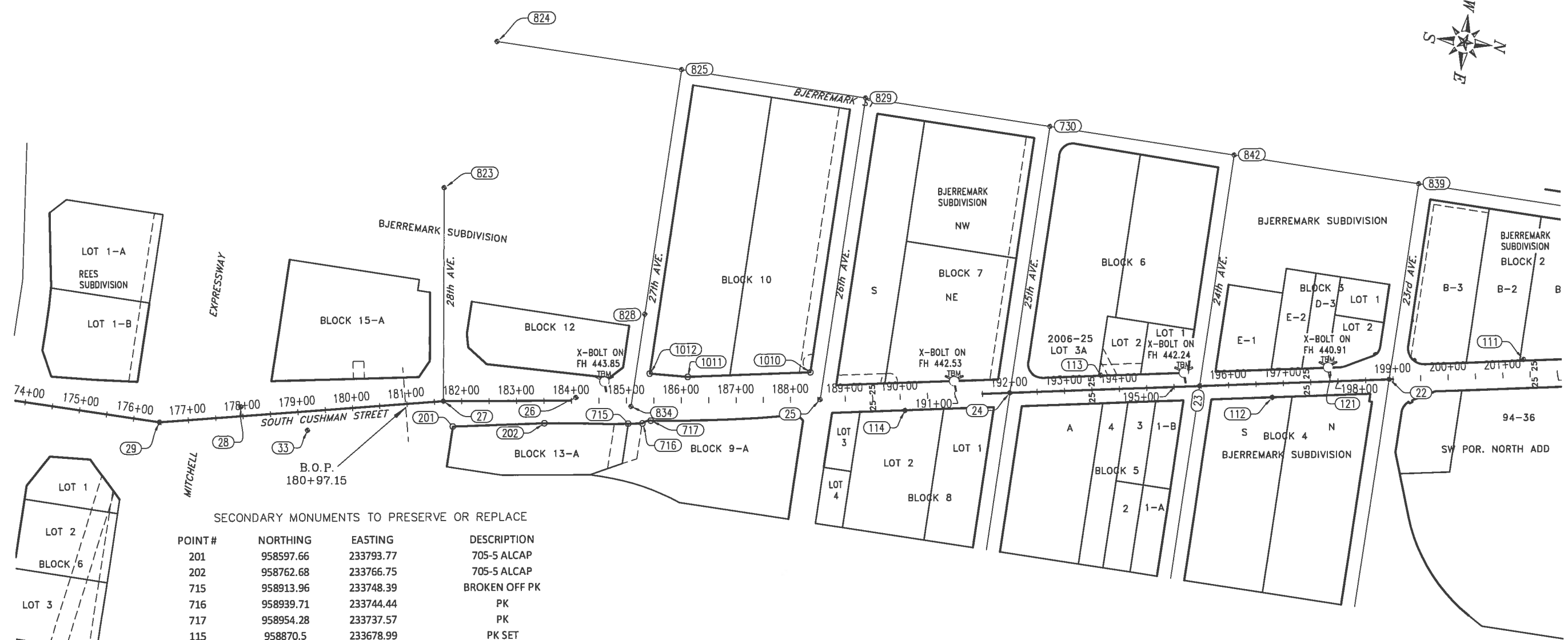


#### AREA OF IMPROVEMENTS



THE FOLLOWING DOT&PF STANDARD DRAWINGS APPLY TO THIS PROJECT:  
A-1  
C-03.10 C-04.12 C-05.20  
D-04.21 D-04.21 D-06.10 D-09.00 D-23.01  
E-09.00  
F-01.01  
I-20.14  
L-23.01  
S-00.11 S-01.00 S-05.01 S-20.10 S-23.00 S-30.03 S-31.00  
T-34.01





SECONDARY MONUMENTS TO PRESERVE OR REPLACE

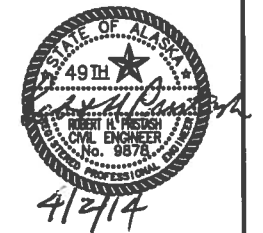
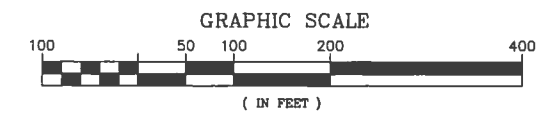
POINT #	NORTHING	EASTING	DESCRIPTION
201	958597.66	233793.77	705-S ALCAP
202	958762.68	233766.75	705-S ALCAP
715	958913.96	233748.39	BROKEN OFF PK
716	958939.71	233744.44	PK
717	958954.28	233737.57	PK
115	958870.5	233678.99	PK SET
1012	958941.69	233652.86	3135-5 2" ALCAP
1011	959011.2	233650.04	3135-5 2" ALCAP
1010	959232.78	233613.79	3135-5 2" ALCAP
724	960719.01	233395.71	705-S ALCAP
152	960769.15	233387.64	705-S ALCAP
161	961728.64	233229.72	705-S ALCAP
745	961374.51	233287.96	LS-6945 2" ALCAP
162	961849.01	233209.99	705-S ALCAP
641	962559.44	233093.49	STOVE PIPE MON
633	962806.4	233053.21	HUB AND TACK
686	963014.03	233071.81	1.25" IP
445	962954.43	233029.29	705-S ALCAP
444	963003.78	233021.23	705-S ALCAP
737	963152.08	232997.05	705-S ALCAP
736	963224.61	232984.87	705-S ALCAP
764	963364.92	233033.22	1" IP
769	963485.76	232995.09	3/4" IP & #5 REBAR

PRIMARY MONUMENT CASINGS TO REPLACE

27	S.I. AT 28TH AND CUSHMAN
26	D.O.T. P.I. SOUTH CUSHMAN
834	S.I. AT 27TH AND CUSHMAN
25	S.I. AT 26TH AND CUSHMAN
24	S.I. AT 25TH AND CUSHMAN
23	S.I. AT 24TH AND CUSHMAN
22	S.I. AT 23TH AND CUSHMAN
21	CENTERLINE CUSHMAN ON 1/4 LINE
20	S.I. AT 21ST AND CUSHMAN
19	S.I. AT LADD AND CUSHMAN
18	S.I. AT 18TH AND CUSHMAN
17	S.I. AT 17TH AND CUSHMAN
16	S.I. AT 16TH (E) AND CUSHMAN
15	S.I. AT 16TH (W) AND CUSHMAN
14	S.I. AT 15TH (E) AND CUSHMAN
13	S.I. AT 15TH (W) AND CUSHMAN

PRIMARY MONUMENTS TO REPLACE

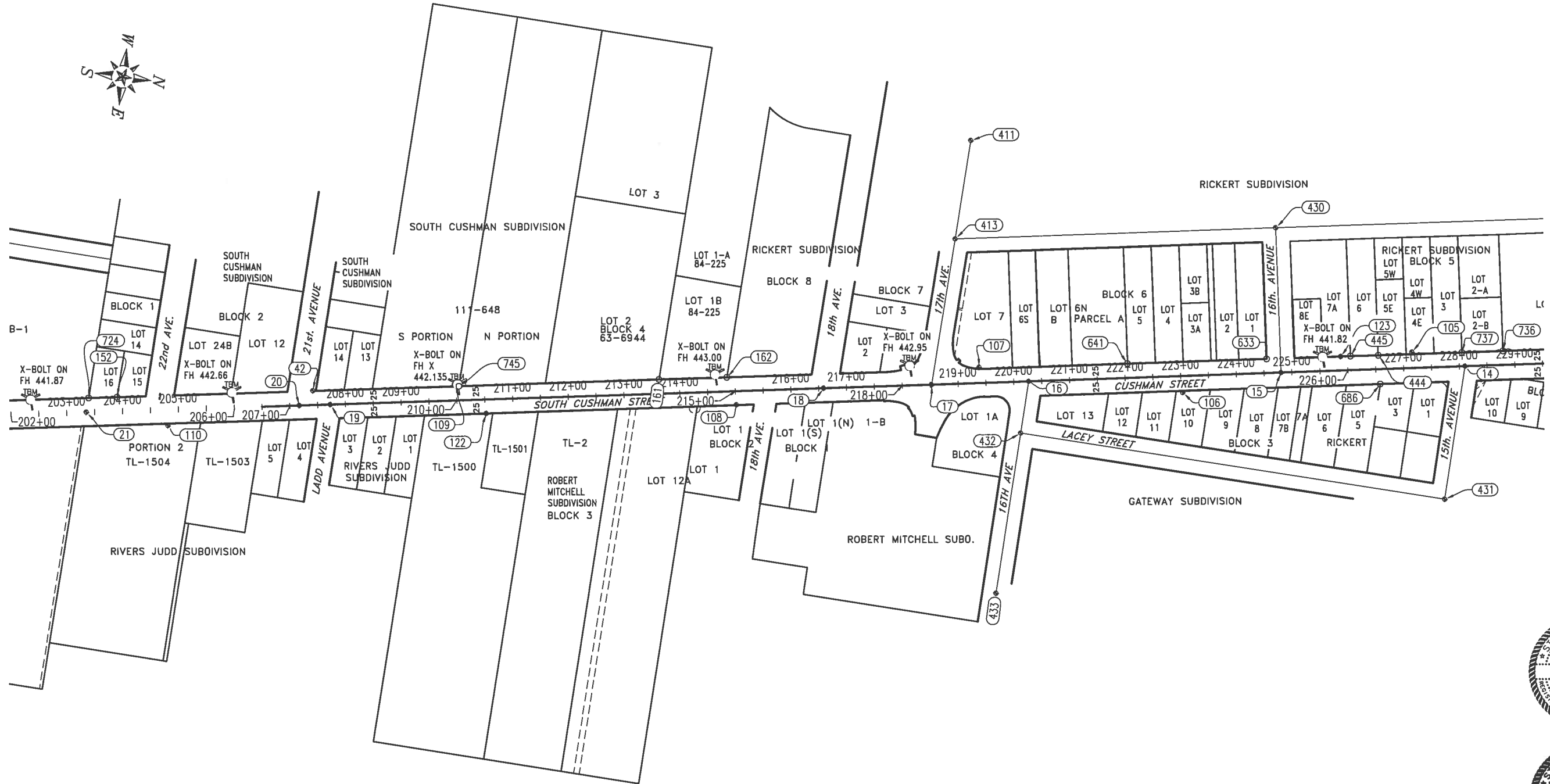
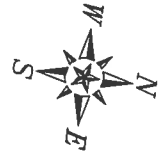
27	S.I. AT 28TH AND CUSHMAN
26	D.O.T. P.I. SOUTH CUSHMAN
834	S.I. AT 27TH AND CUSHMAN
25	S.I. AT 26TH AND CUSHMAN
24	S.I. AT 25TH AND CUSHMAN
23	S.I. AT 24TH AND CUSHMAN
22	S.I. AT 23TH AND CUSHMAN
21	CENTERLINE CUSHMAN ON 1/4 LINE
20	S.I. AT 21ST AND CUSHMAN
19	S.I. AT LADD AND CUSHMAN
18	S.I. AT 18TH AND CUSHMAN
17	S.I. AT 17TH (W) AND CUSHMAN
16	S.I. AT 16TH (E) AND CUSHMAN
15	S.I. AT 16TH (W) AND CUSHMAN
14	S.I. AT 15TH (E) AND CUSHMAN
13	S.I. AT 15TH (W) AND CUSHMAN



4/2/14

STATE	PROJECT DESIGNATION	YEAR	SHEET NO.	TOTAL SHEETS
ALASKA	FB-14-02/62532	2014	3.02	64

P:\s cushman\civil3d drawing files\3production\Survey Control



4/2/14

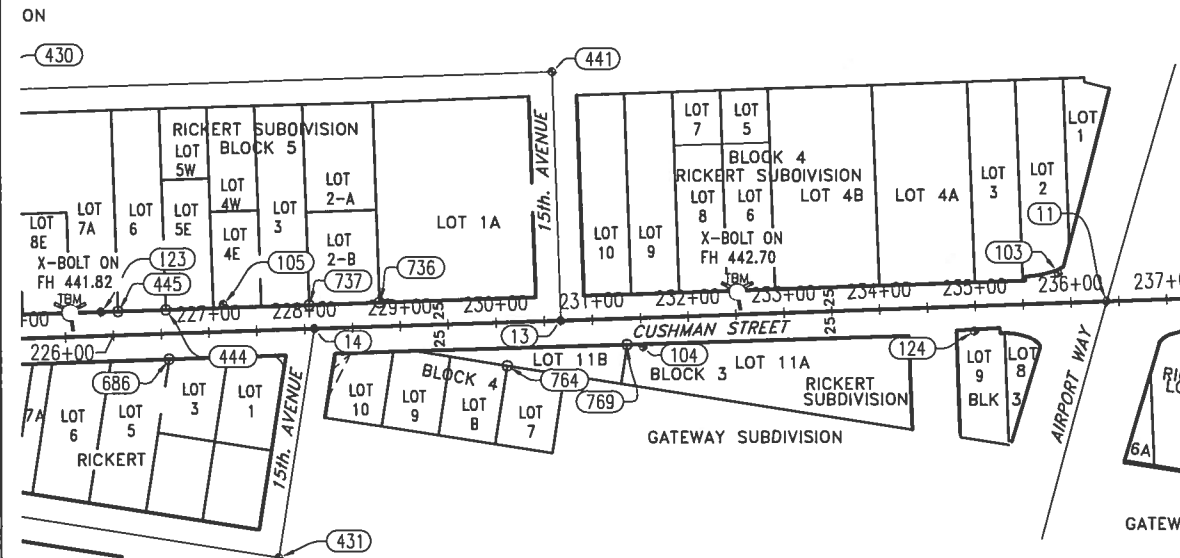
P:\s cushman\civil3d drawing files\3production\Survey Control.dwg 4/2/2014 9:54:30 AM

STATE	PROJECT DESIGNATION	YEAR	SHEET NO.	TOTAL SHEETS
ALASKA	FB-14-02/62532	2014	3.03	64

P:\s cushman\civil3d drawing files\3production\Survey Control

CONTROL

Point	Northing	Easting	Station	Offset	Description
11	963976.35	232886.24	236+37.16	0.000'	DOT AIRPORT-CUSHMAN
13	963414.19	232979.18	230+67.37	0.000'	SI 15TH-CUSHMAN
14	963160.36	233020.74	228+10.17	0.000'	SI 15TH-CUSHMAN
15	962835.06	233074.09	224+80.52	-0.000'	SI 16TH-CUSHMAN
16	962387.05	233147.54	220+26.53	-0.000'	SI 16TH-CUSHMAN
17	962215.38	233175.69	218+52.56	0.000'	SI 17TH-CUSHMAN
18	962024.2	233207.02	216+58.83	-0.000'	SI 18TH-CUSHMAN
19	961150	233350.48	207+72.94	0.000'	SI 19TH-CUSHMAN
20	961095.02	233359.5	207+17.22	-0.000'	SI 21ST-CUSHMAN
21	960718.08	233421.29	203+35.25	0.000'	CUSH & BJERREMARK BNDY
22	960281.48	233492.94	198+92.81	-0.000'	SI 23RD-CUSHMAN
23	959939.84	233548.83	195+46.63	0.000'	SI 24TH-CUSHMAN
24	959598.14	233604.74	192+00.39	0.000'	SI 25TH-CUSHMAN
25	959256.57	233660.56	188+54.28	0.000'	SI 26TH-CUSHMAN
26	958813.93	233712.87	184+08.60	-5.751'	DOT "C"92+39.4 PI
27	958574.79	233750.06	181+66.66	-0.000'	DOT "C"94+81.17POT
28	958209.5	233806.89	177+97.36	-17.079'	DOT "C"98+50.9 PC
29	958065.4	233853.61	176+46.84	0.000'	SEC COR
33	958335.05	233833.83	179+15.04	34.335'	DOT "CN"51+20.8 PI
35	955425.38	233786.26	150+05.98	-8.708'	1/4 COR
38	964370.63	232822.15	240+36.62	-0.000'	SI CUSHMAN-GAFFNEY
42	961115.89	233330	207+42.59	-25.730'	USKH FLYPT#109A
103	963922.65	232863.38	235+87.91	-31.314'	PK RESET
104	963502.43	232995.09	231+51.83	30.089'	REBAR SET
105	963062.91	233007.77	227+16.10	-28.569'	PK SET
106	962664.29	233131.92	223+02.64	29.443'	PK SET
107	962295.99	233134.16	219+38.83	-27.936'	REBAR SET
108	961872.33	233256.47	215+00.96	24.200'	SET SPIKE IN WALK
109	961369.54	233284.86	210+00.21	-29.198'	REBAR SET
110	960865.69	233425.78	204+80.19	28.308'	REBAR SET
111	960520.04	233426.03	201+39.06	-27.390'	PK SET
112	960074.14	233552.61	196+78.56	25.414'	REBAR SET
113	959758.64	233552.14	193+67.28	-25.989'	PK SET
114	959412.3	233660.78	190+07.95	25.330'	PK SET
115	958870.5	233678.99	184+69.11	-31.980'	PK SET
121	960172.91	233484.99	197+86.95	-25.370'	PK SET
122	961429.35	233329.89	210+51.94	24.913'	PK SET
123	962937.04	233032.21	225+87.93	-24.822'	PK SET
124	963843.67	232934.56	234+98.38	26.030'	PK SET
125	955474.6	233939.41	150+58.59	143.310'	PK SET
411	962230.36	232733.62	219+38.88	-433.818'	BC MON SI
413	962224.45	232911.61	219+04.25	-259.132'	BC MON SI
430	962793.3	232818.41	224+80.68	-259.060'	IP MON SI



CONTROL (CONT.)

Point	Northing	Easting	Station	Offset	Description
431	963154.1	233261.2	227+65.05	236.317'	BC MON SI
432	962384.6	233241.1	220+08.98	91.900'	PK? SI
433	962376.9	233531	219+54.50	376.741'	CASE ONLY SI
441	963372.5	232723.9	230+67.84	-258.688'	IP SI
730	959610.8	233114.7	192+92.01	-481.551'	REBAR SI
739	964283.4	233057.8	239+12.73	218.579'	BRASS PLATE
823	958528.5	233364.5	181+70.98	-388.288'	DOT "CW" 342+17.3 PI
824	958591.4	233088.4	182+69.22	-653.905'	REBAR
825	958931	233096.9	186+04.86	-601.251'	REBAR SI
828	958919.4	233546.8	185+34.81	-156.691'	REBAR SI
829	959271.1	233105.9	189+58.09	-545.095'	REBAR SI
839	960290.8	233133.1	199+60.28	-353.582'	BC SI
842	959950.8	233123.9	196+26.03	-417.580'	PK SET SI

ALIGNMENT

PI Station	Northing	Easting	Distance	Direction
176+46.84	958,065.3950'	233,853.6098'		
			519.816'	N11° 29' 26"W
181+66.66	958,574.7925'	233,750.0591'		
			687.622'	N7° 28' 43"W
188+54.28	959,256.5651'	233,660.5625'		
			346.108'	N9° 16' 54"W
192+00.39	959,598.1414'	233,604.7397'		
			346.245'	N9° 17' 35"W
195+46.63	959,939.8420'	233,548.8269'		
			346.176'	N9° 17' 25"W
198+92.81	960,281.4774'	233,492.9414'		
			442.443'	N9° 19' 11"W
203+35.25	960,718.0803'	233,421.2910'		
			381.970'	N9° 18' 34"W
207+17.22	961,095.0199'	233,359.5010'		
			55.714'	N9° 19' 07"W
207+72.94	961,149.9991'	233,350.4796'		
			885.895'	N9° 19' 09"W
216+58.83	962,024.2022'	233,207.0235'		
			193.730'	N9° 18' 31"W
218+52.56	962,215.3810'	233,175.6869'		
			173.963'	N9° 18' 45"W
220+26.53	962,387.0513'	233,147.5362'		
			453.989'	N9° 18' 39"W
224+80.52	962,835.0591'	233,074.0860'		
			329.650'	N9° 18' 46"W
228+10.17	963,160.3646'	233,020.7407'		
			257.202'	N9° 17' 54"W
230+67.37	963,414.1874'	232,979.1832'		
			569.789'	N9° 23' 15"W
236+37.16	963,976.3456'	232,886.2439'		



4/2/14