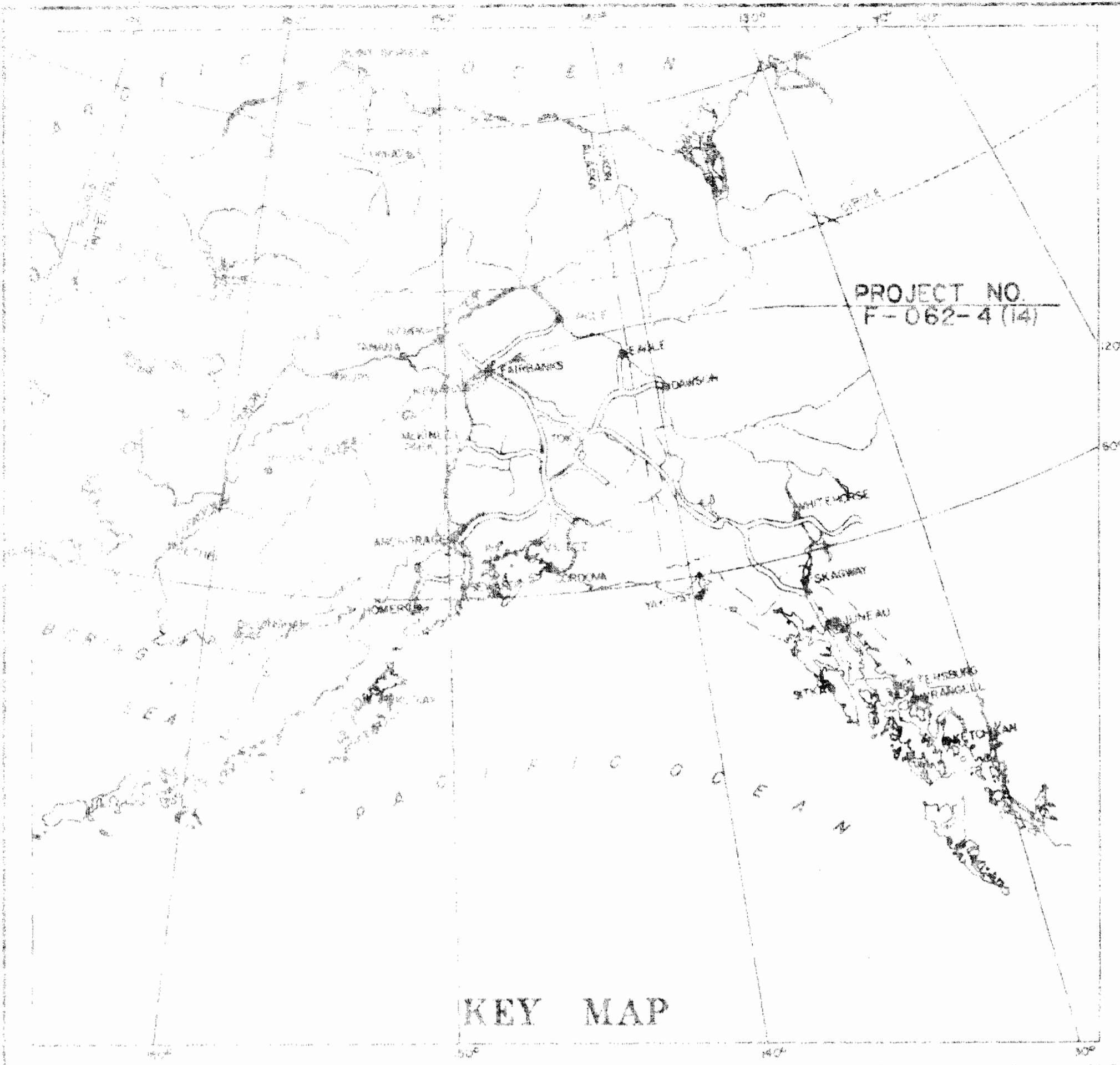


STATE OF ALASKA
DEPARTMENT OF HIGHWAYS

RIGHT OF WAY MAP
ALASKA PROJECT
NO. F-062-4(14)
CITY OF FAIRBANKS
NOBLE STREET



KEY MAP



BEGINNING OF PROJECT
STA. 0+00

END OF PROJECT
STA. 31+75



FORT WAINWRIGHT

- CONSTRUCTION NOTES
- 1. ALL CONSTRUCTION SHALL BE IN ACCORDANCE WITH THE ALASKA DEPARTMENT OF HIGHWAYS STANDARD SPECIFICATIONS FOR ROAD AND BRIDGE CONSTRUCTION.
 - 2. THE RIGHT OF WAY LINE SHALL BE CLEARLY MARKED AND MAINTAINED THROUGHOUT THE PROJECT.
 - 3. ALL UTILITIES SHALL BE DEPTH MARKED AND PROTECTED.
 - 4. ALL EXISTING UTILITIES SHALL BE MAINTAINED AND PROTECTED.
 - 5. ALL EXISTING UTILITIES SHALL BE MAINTAINED AND PROTECTED.
 - 6. ALL EXISTING UTILITIES SHALL BE MAINTAINED AND PROTECTED.
 - 7. ALL EXISTING UTILITIES SHALL BE MAINTAINED AND PROTECTED.
 - 8. ALL EXISTING UTILITIES SHALL BE MAINTAINED AND PROTECTED.
 - 9. ALL EXISTING UTILITIES SHALL BE MAINTAINED AND PROTECTED.
 - 10. ALL EXISTING UTILITIES SHALL BE MAINTAINED AND PROTECTED.
 - 11. ALL EXISTING UTILITIES SHALL BE MAINTAINED AND PROTECTED.
 - 12. ALL EXISTING UTILITIES SHALL BE MAINTAINED AND PROTECTED.
 - 13. ALL EXISTING UTILITIES SHALL BE MAINTAINED AND PROTECTED.
 - 14. ALL EXISTING UTILITIES SHALL BE MAINTAINED AND PROTECTED.
 - 15. ALL EXISTING UTILITIES SHALL BE MAINTAINED AND PROTECTED.
 - 16. ALL EXISTING UTILITIES SHALL BE MAINTAINED AND PROTECTED.
 - 17. ALL EXISTING UTILITIES SHALL BE MAINTAINED AND PROTECTED.
 - 18. ALL EXISTING UTILITIES SHALL BE MAINTAINED AND PROTECTED.
 - 19. ALL EXISTING UTILITIES SHALL BE MAINTAINED AND PROTECTED.
 - 20. ALL EXISTING UTILITIES SHALL BE MAINTAINED AND PROTECTED.

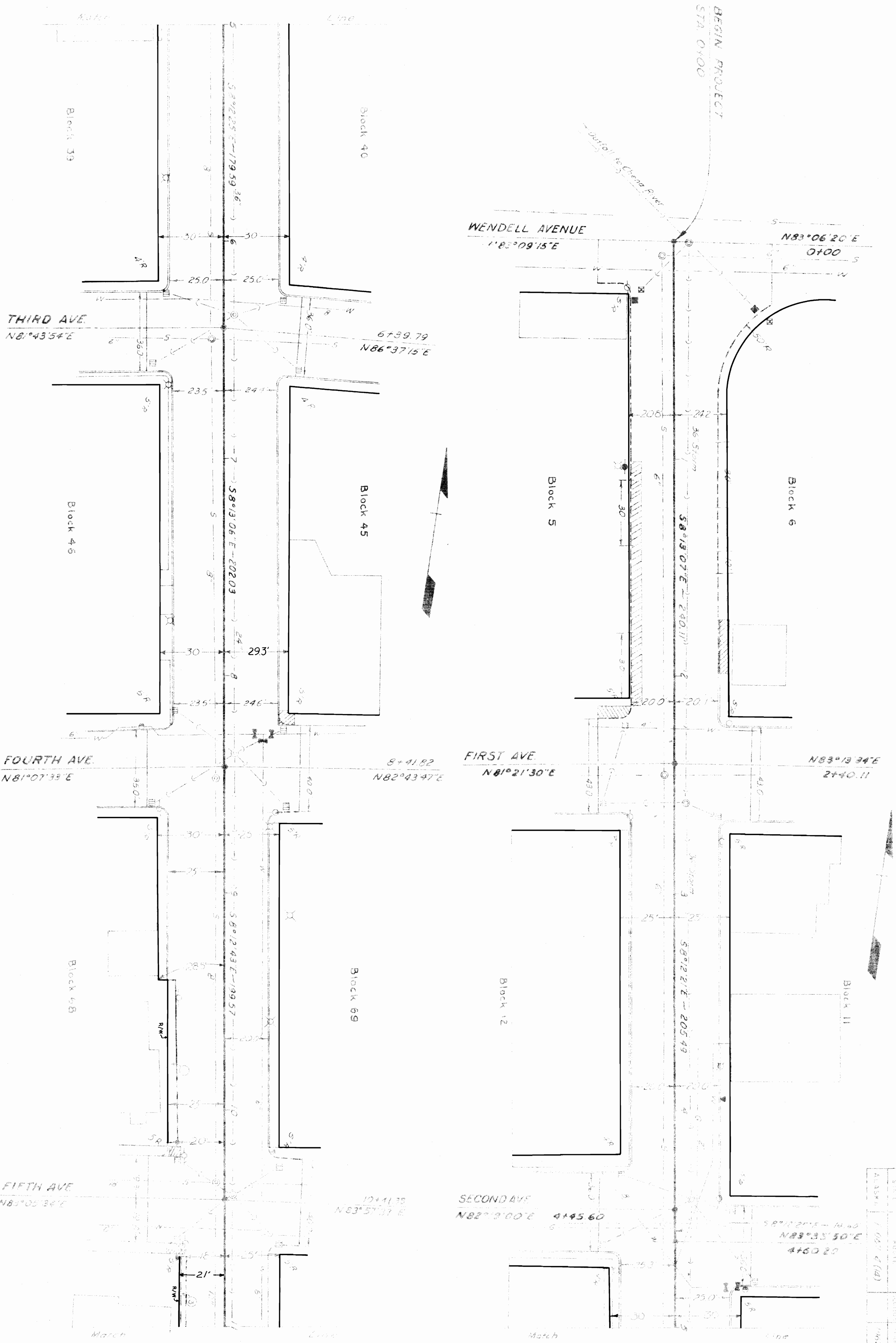
STATE OF ALASKA
DEPARTMENT OF HIGHWAYS

APPROVED
Robert E. Lamp Date 7-13-62
Acting REGIONAL ENGINEER
FAIRBANKS DIVISION

APPROVED

REGIONAL ENGINEER
FAIRBANKS DIVISION

Sheet No. 0.0 Drawing #1291
CITY OF FAIRBANKS, NOBLE STREET
Project No.: F-062-4(14)



BEGIN PROJECT
 STA. 0+00

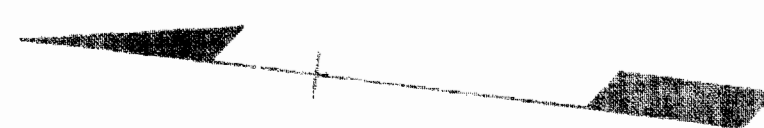
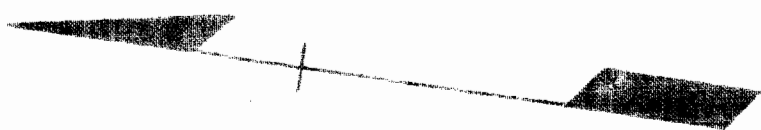
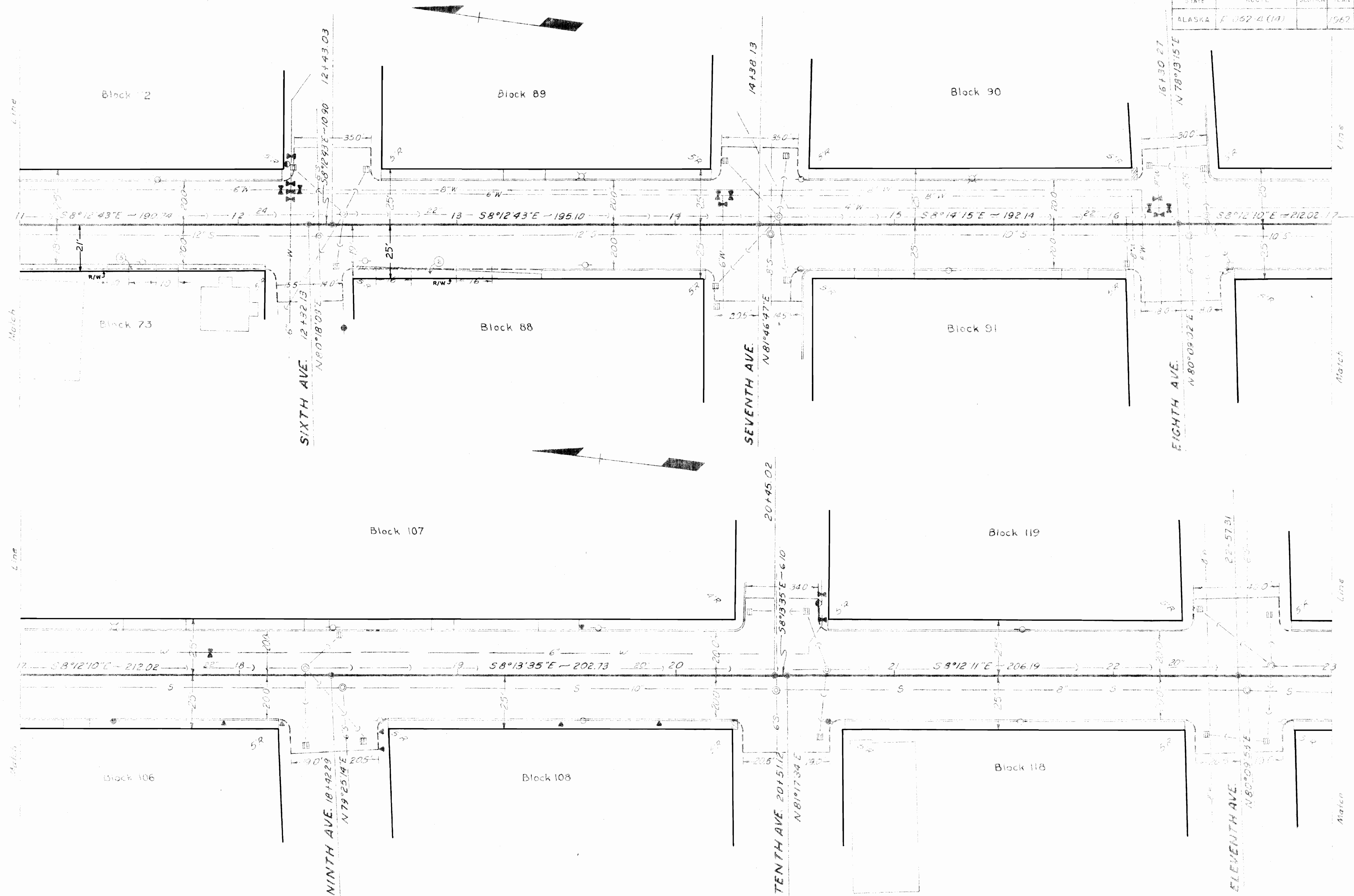
outfall to Clear River



STATE	ROUTE	MILE	SECTION	DATE	SCALE
ALASKA	1062 (14)			1992	1" = 100'

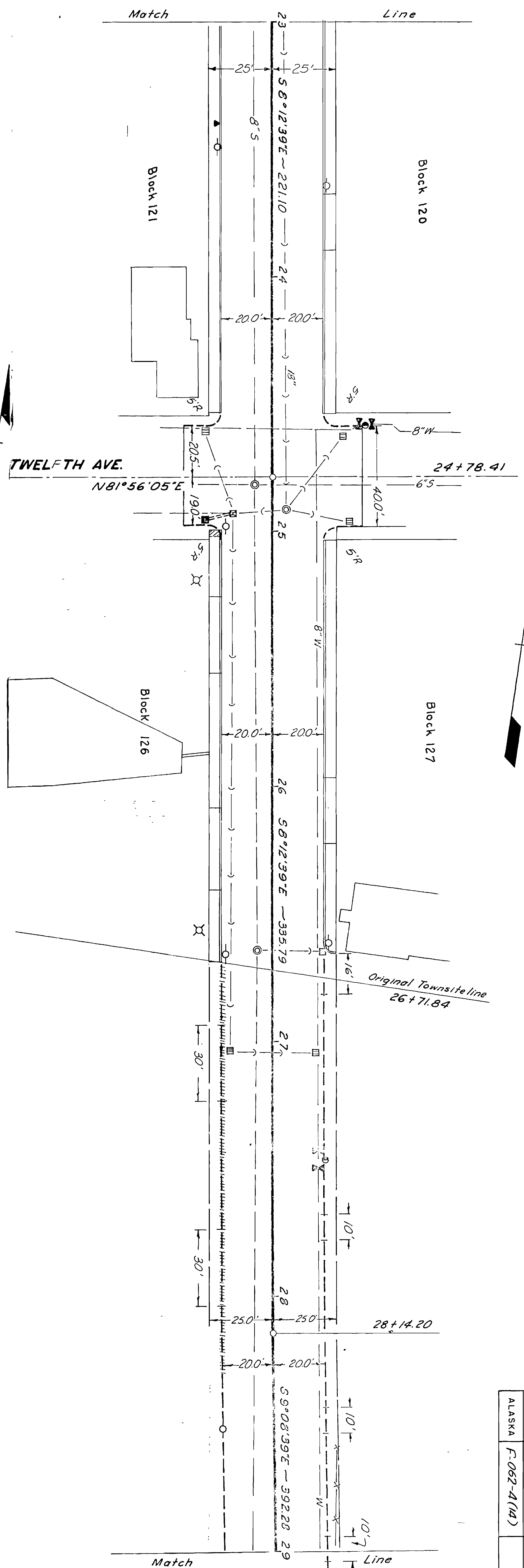
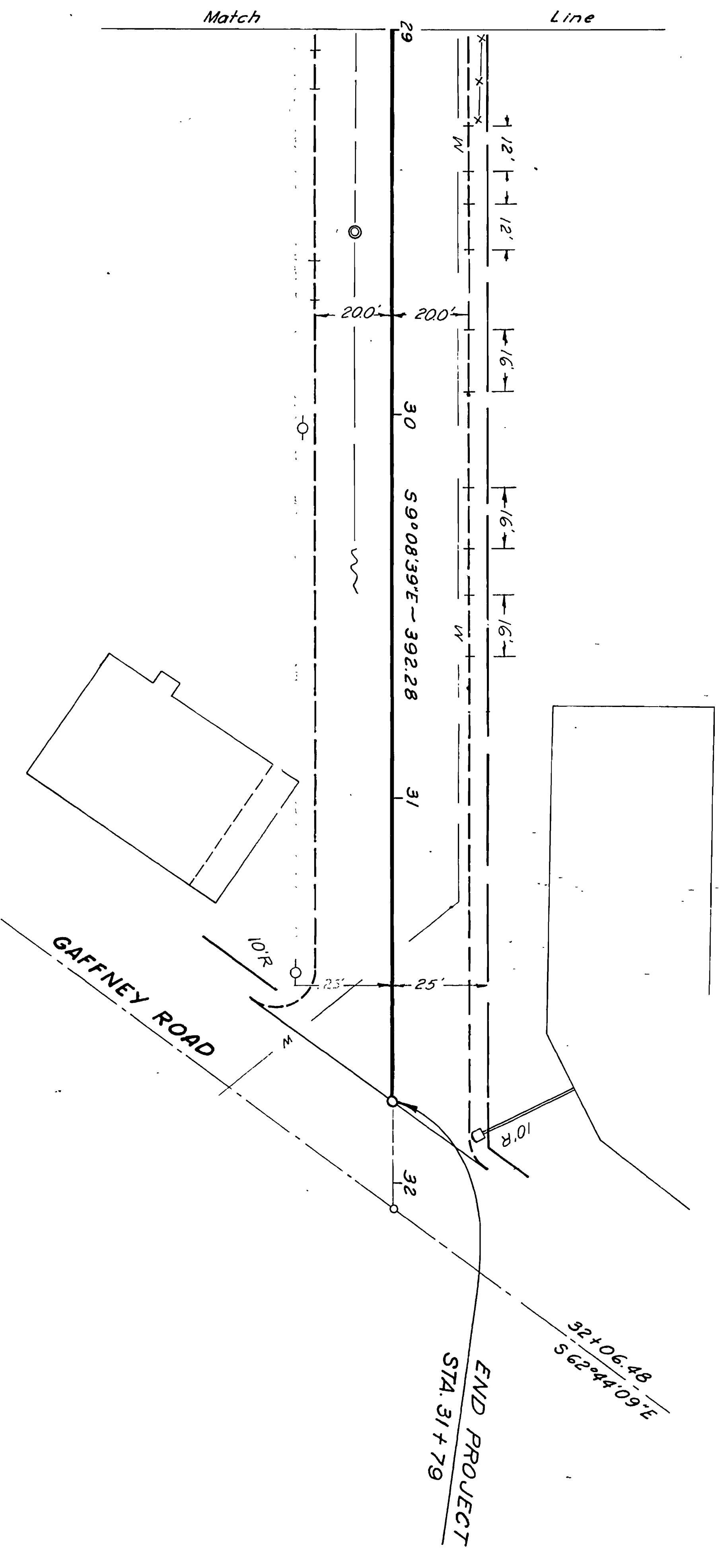
STATE	ROUTE	SECTION	YEAR	SHEET NO.	TOTAL SHEETS
ALASKA	F-062-4(14)		1967	2	3

Sheet No. 2 Drawing #1293
 CITY OF FBK., NOBLE STREET
 Project No.: F-062-4(14)



PLAN	DATE	BY	DATE
NOTE BOOK			
NO.			

PLAN	DATE	BY	DATE
NOTE BOOK			
NO.			



STATE	ROUTE	SECTION	YEAR
ALASKA	F-062-4(1A)		1962