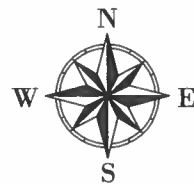
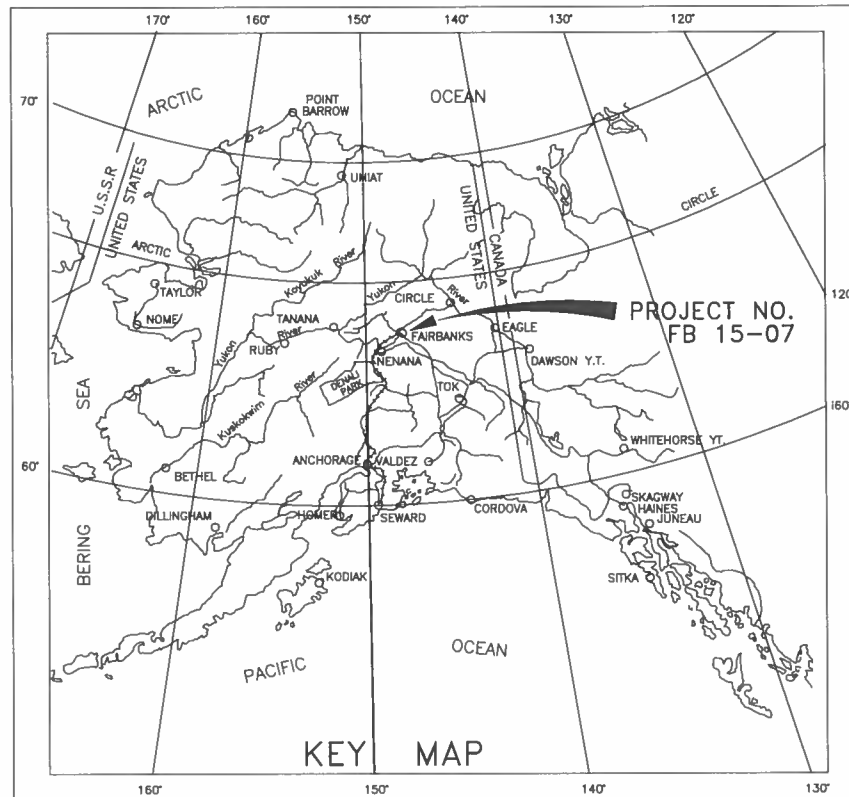


CITY OF FAIRBANKS
DEPARTMENT OF PUBLIC WORKS
ENGINEERING DIVISION

PROPOSED ROADWAY PROJECT
FB-15-07/77194
CUSHMAN ROADWAY, SIDEWALK,
DRAINAGE, UTILITIES, SIGNALIZATION,
LIGHTING, AND LANDSCAPING
IMPROVEMENTS



AREA OF IMPROVEMENTS

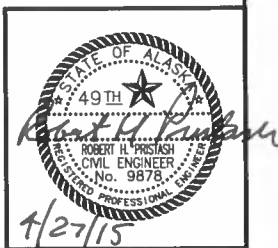


INDEX OF SHEETS	
SHEET NO.	DESCRIPTION
1.01	TITLE SHEET
2.01-2.03	SHEET INDEX, NOTES & QUANTITIES
3.01-3.02	SURVEY CONTROL
4.01	ROADWAY TYPICAL SECTIONS
5.01-5.12	PLAN & PROFILE, ROADWAY
6.01-6.05	PLAN & PROFILE, STORM DRAIN
7.01-7.05	PLAN & PROFILE, WATER, SEWER
8.01-8.05	PLAN & PROFILE, STEAM & CONDENSATE, GAS
9.01-9.04	PLAN & PROFILE, COMM. UTILITIES
10.01	SIGNING AND STRIPING SHEET LAYOUT AND NOTES
10.02-10.06	SIGNING AND STRIPING PLANS
10.07-10.10	SIGN SUMMARY
10.11-10.15	SPECIAL SIGN DETAILS
10.16-10.18	SIGNING DETAILS
11.01	ILLUMINATION/INTERCONNECT SHEET LAYOUT/NOTES
11.02-11.12	ILLUMINATION/INTERCONNECT PLANS
11.13-11.14	ILLUMINATION/INTERCONNECT SUMMARY
11.15-11.24	ILLUMINATION/INTERCONNECT DETAILS
11.25	SIGNAL SHEET LAYOUT AND NOTES
11.26-11.60	SIGNAL SHEETS
11.61-11.63	LOAD CENTER SHEETS AND DETAILS
11.64-11.74	SIGNAL DETAILS
12.01-12.26	LANDSCAPING PLANS & DETAILS
13.01-13.12	PROJECT DETAILS
14.01-14.02	EROSION & SEDIMENT CONTROL PLAN
15.01-15.03	TRAFFIC CONTROL PLAN
SUPPLEMENTAL	
SH. 1-15	ACS PLAN SHEETS

PROJECT SUMMARY		
	CUSHMAN ST.	SIDE STREETS
WIDTH OF PAVEMENT	25'	VARIES
LENGTH OF PAVEMENT	2430 LF	975 LF
LENGTH OF GRADING	2430 LF	975 LF
LENGTH OF PROJECT	2430 LF	975 LF

THE FOLLOWING DOT&PF STANDARD DRAWINGS APPLY TO THIS PROJECT:

- A-1
- C-03.10 C-04.12 C-05.20
- D-04.21 D-04.21 D-06.10 D-09.00 D-23.01
- E-09.00
- F-01.01
- I-20.14
- L-23.01
- S-00.11 S-01.00 S-05.01 S-20.10 S-23.00 S-30.03 S-31.00
- T-34.01



DATE	REVISION	BY

SCALE: NONE

DESIGNED: C.O.F. STAFF
DRAWN: C.O.F. STAFF
CHECKED: R.H.P.
DATE: 04/22/15

APPROVED

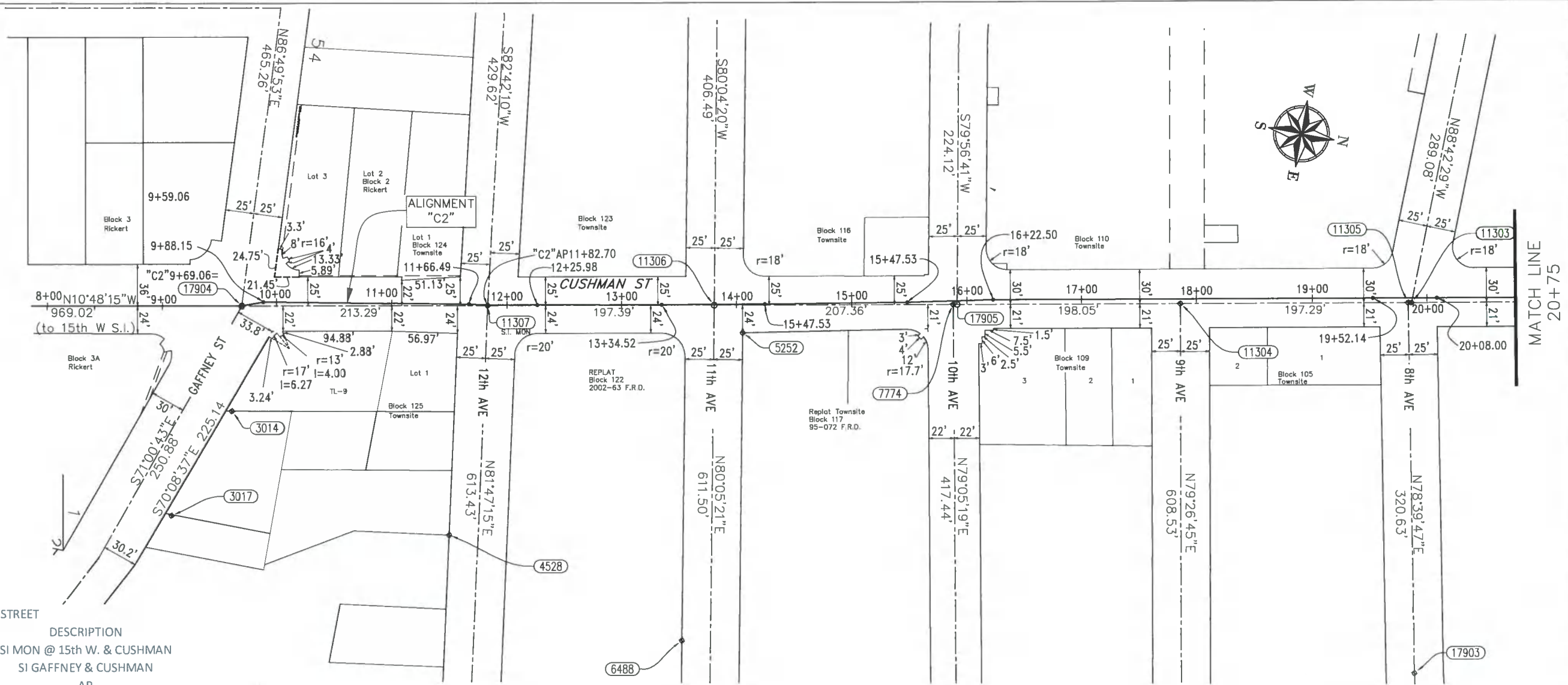
CITY ENGINEER
DATE

Cushman Complete Streets

CITY OF FAIRBANKS, ALASKA
Engineering Department
Project FB-15-07/77194

1.01
OF 173
SHEETS

C:\ATI\Sheet\Cushman_C.S.dwg, 4/27/2015 12:36:06 PM



ALIGNMENT C2 - CUSHMAN STREET

C2	NORTHING	EASTING	DESCRIPTION
0+00.05	47118.807	11506.605	SI MON @ 15th W. & CUSHMAN
9+69.06	48070.646	11324.9604	SI GAFFNEY & CUSHMAN
9+88.15	48088.48	11318.13	AP
11+66.49	48264.05	11286.84	AP
11+82.70	48280.0911	11284.4853	AP
12+25.98	48322.6023	11276.4001	AP
13+34.52	48429.2228	11256.0776	AP
14+24.17	48517.2485	11239.0544	AP
15+47.53	48638.2078	11214.8318	AP
16+22.50	48711.4184	11198.6849	AP
19+52.14	49035.2152	11136.9247	AP
20+08.00	49090.0936	11126.4892	AP
21+66.69	49245.9691	11096.7509	AP
22+18.89	49297.5932	11088.9676	AP
25+64.05	49636.6501	11024.3933	AP
26+17.75	49689.7429	11016.3237	AP
27+60.28	49829.7492	10989.6023	AP
28+08.17	49876.7779	10980.5869	AP
29+60.07	50026.0014	10952.1514	AP
30+09.88	50074.925	10942.8464	AP
31+52.18	50214.7112	10916.1821	AP
32+16.20	50277.5773	10904.1048	AP
33+64.64	50423.3642	10876.1615	AP
33+94.38	50452.6181	10870.7922	AP
34+48.11	50505.3272	10860.3955	END

CUSHMAN CL MONUMENTS TO REPLACE

POINT	NORTHING	EASTING	DESCRIPTION
8	49850.3426	10985.6243	SI MON
7762	49455.2006	11060.9918	SI MON
7764	49268.8501	11096.4854	SI MON
7774	48677.7478	11209.1644	SI MON
7781	50046.3771	10948.2687	SI MON
7782	50049.9737	10947.543	SI MON
7787	50245.8904	10910.1523	SI MON
11301	49658.776	11022.2147	SI MON
11302	49260.5538	11098.0872	SI MON
11303	49069.0413	11134.5911	SI MON
11304	48872.3057	11172.1387	SI MON
11305	49066.0986	11135.1723	SI MON
11306	48474.0528	11248.0026	calc
11307	48280.1525	11284.9646	SI MON
17904	48070.646	11324.9604	calc
17905	48681.1468	11208.5175	calc
17906	49852.7984	10985.1563	SI MON
17907	50452.6181	10870.7922	calc
17908	50246.4798	10910.0401	calc

OTHER EXISTING MONUMENTS

POINT	NORTHING	EASTING	DESCRIPTION
7	49877.9323	10360.501	SI MON
3014	48078.7	11416	FRC
3017	48043.8447	11514.5953	FRC
4528	48284.1305	11486.37	FRC
5252	48502.7736	11266.9589	FRC
6488	48499.519	11538.7479	FRC
11126	50130.7465	11212.0024	FRC
17903	49129.136	11449.5898	CL MON

ABBREVIATIONS

calc	CALCULATED POSITION
CL MON	CENTERLINE MONUMENT
FRC	FOUND REBAR AND CAP
SI MON	STREET CENTERLINE INTERSECTION

NOTE:

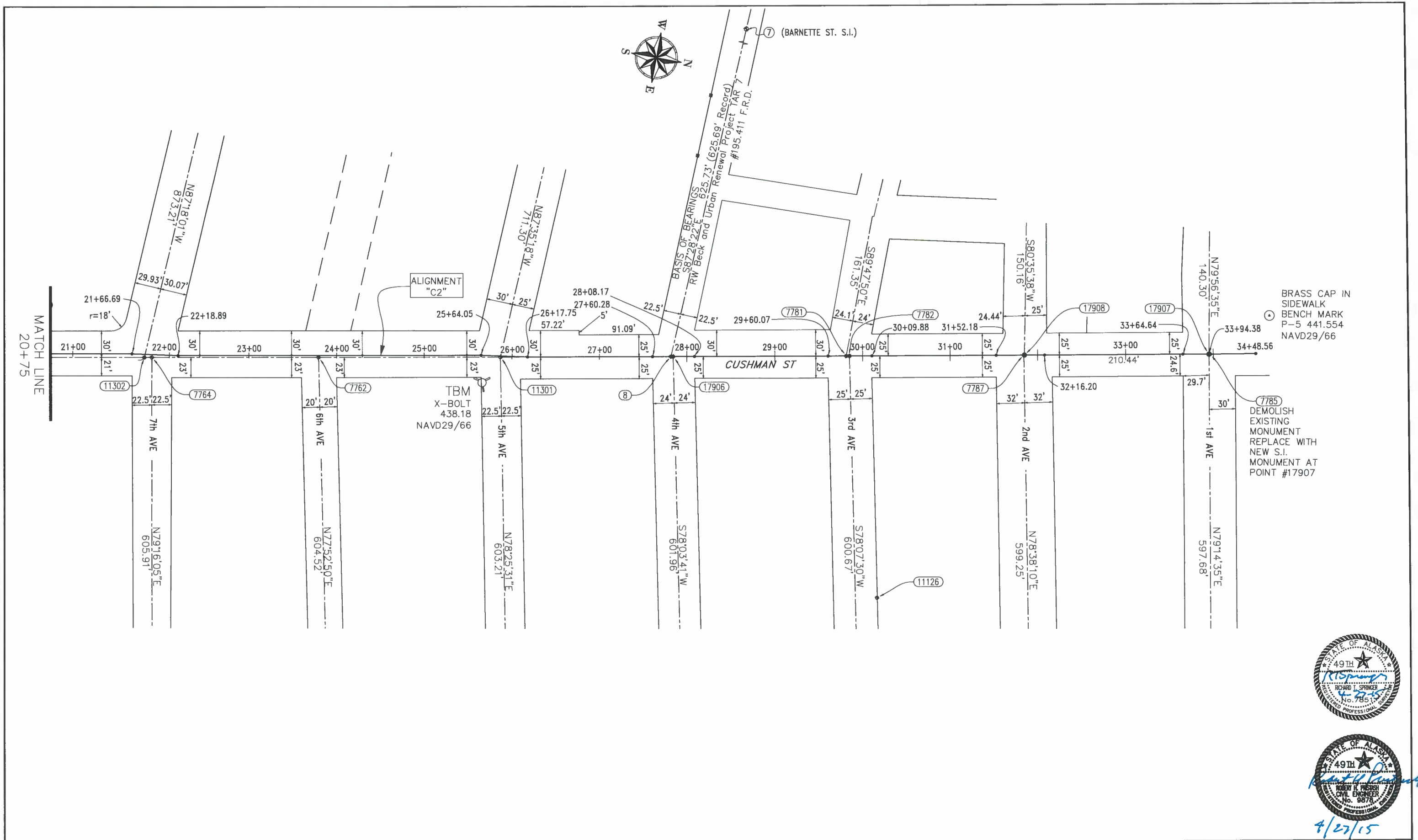
CENTERLINE DATA AND BASIS OF BEARINGS ARE FROM THE R.W. BECK ASSEMENT MAPS ON FILE AT CITY HALL, 800 CUSHMAN ST., FAIRBANKS, AK. BLOCK CORNERS ARE FROM 1909 FAIRBANKS TOWNSITE FIELD NOTES (rotated CW 4min+- to fit R.W.B. bearings), THEN ALTERED BY T.A.R. 7 (195.411), THE 1969 RESUBDIVISION OF BLOCKS 93, 94, 103, 104, 111, 116, AND A PORTION OF BLOCKS 102, 112 115 FAIRBANKS TOWNSITE (70-4886), THE SUBDIVISION OF RICKERT HOMESTEAD (96.332), AND REPLATS AS INDICATED.

THE PROJECT COORDINATE SYSTEM IS LOCAL. PROJECT DATUM IS NAVD 29 WITH THE 1966 ADJUSTMENT AT BRASS CAP P-5 (RESET 1955), ELEVATION 441.554'.



8/27/15

DATE	REVISION	BY	SCALE:	DESIGNED: WKR	APPROVED	CUSHMAN COMPLETE STREETS SURVEY CONTROL	CITY OF FAIRBANKS, ALASKA Engineering Department Project FB-15-07/77194	3.01 OF 173 SHEETS
				DRAWN: RTS	CITY ENGINEER			
				CHECKED: RHP	DATE			



4/27/15

SCALE:			DESIGNED: WKR	APPROVED	CUSHMAN COMPLETE STREETS	CITY OF FAIRBANKS, ALASKA Engineering Department	3.02
			DRAWN: RTS	CITY ENGINEER			
			CHECKED: RHP	DATE	SURVEY CONTROL	Project FB-15-07/77194	OF 173 SHEETS
DATE	REVISION	BY	DATE: 04/22/15				