

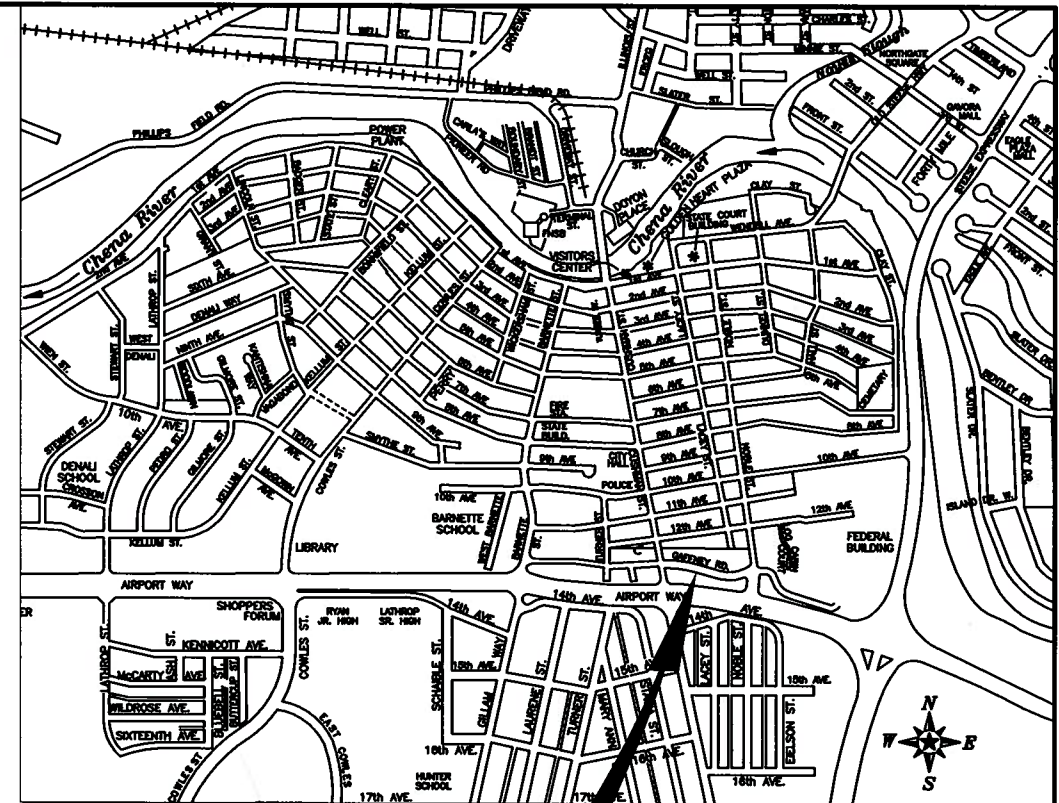
CITY OF FAIRBANKS
ENGINEERING DEPARTMENT

GAFFNEY ROAD IMPROVEMENTS

FB-09-15

ASBUILTS

CONTRACTOR:
COMPLETED:
PLANS AND SPECIFICATIONS BY: CITY OF FAIRBANKS
TERRY M. STRLE, MAYOR
MICHAEL J. SCHMETZER, PUBLIC WORKS DIRECTOR & CITY ENGINEER



VICINITY MAP
NOT TO SCALE

*THIS
PROJECT*

SHEET INDEX:

TS	TITLE SHEET
Q1	ESTIMATE OF QUANTITIES, INDEX AND LEGEND SHEET
SC	SURVEY CONTROL SHEET
TYP	TYPICAL SECTIONS
PD1-3	PROJECT DETAILS
SD1-3	STORM DRAIN PLAN AND PROFILE SHEETS
GR1-3	GRADING AND ROADWAY SHEETS
ESCP	EROSION AND SEDIMENT CONTROL PLAN
STR	STRIPING
TCP	TRAFFIC CONTROL PLAN AND NOTES



DATE	REVISION	BY

DESIGNED: RHP	FILE NAME:
DRAWN: HB	gaff_sd_title.dwg
CHECKED: RHP	SCALE: NTS
DATE: 4/27/09	

CITY OF FAIRBANKS, ALASKA
ENGINEERING DEPARTMENT

GAFFNEY ROAD IMPROVEMENTS

1 of 16
TS

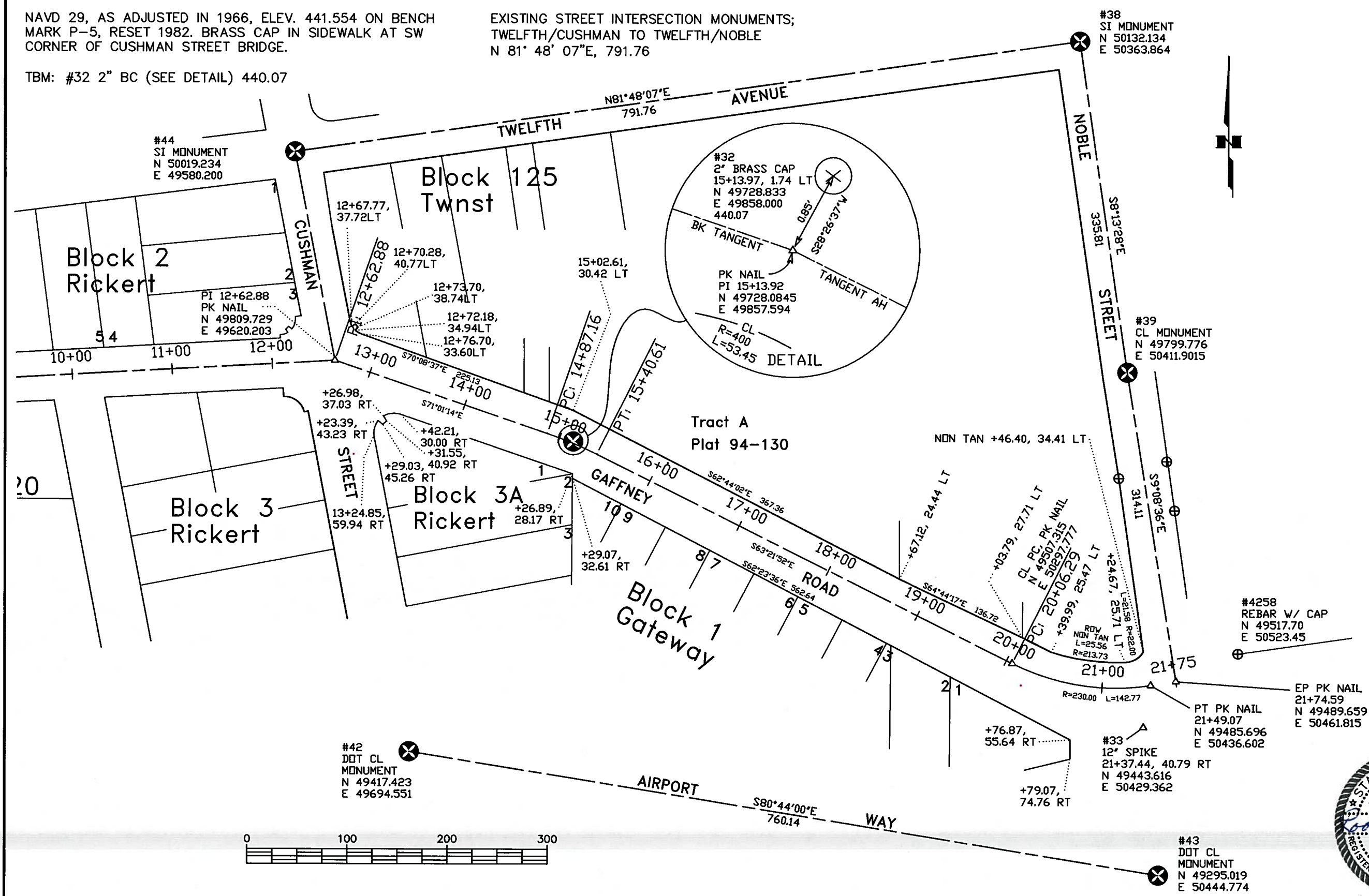
BASIS OF VERTICAL CONTROL

NAVD 29, AS ADJUSTED IN 1966, ELEV. 441.554 ON BENCH MARK P-5, RESET 1982. BRASS CAP IN SIDEWALK AT SW CORNER OF CUSHMAN STREET BRIDGE.

TBM: #32 2" BC (SEE DETAIL) 440.07

BASIS OF BEARINGS

EXISTING STREET INTERSECTION MONUMENTS; TWELFTH/CUSHMAN TO TWELFTH/NOBLE
N 81° 48' 07"E, 791.76



DATE	REVISION	BY

DESIGNED: RHP	FILE NAME:
DRAWN: RTS	gaff sd survey ctrl.dwg
CHECKED: RHP	SCALE: 1" = 100'
DATE: 04/27/09	

CITY OF FAIRBANKS, ALASKA
ENGINEERING DEPARTMENT

GAFFNEY ROAD IMPROVEMENTS
SURVEY CONTROL

P:\Gaffney SD\dwg\gaff sd survey ctrl.dwg, 5/11/2009 6:53:08 AM, \GLACIER\ENG5500C