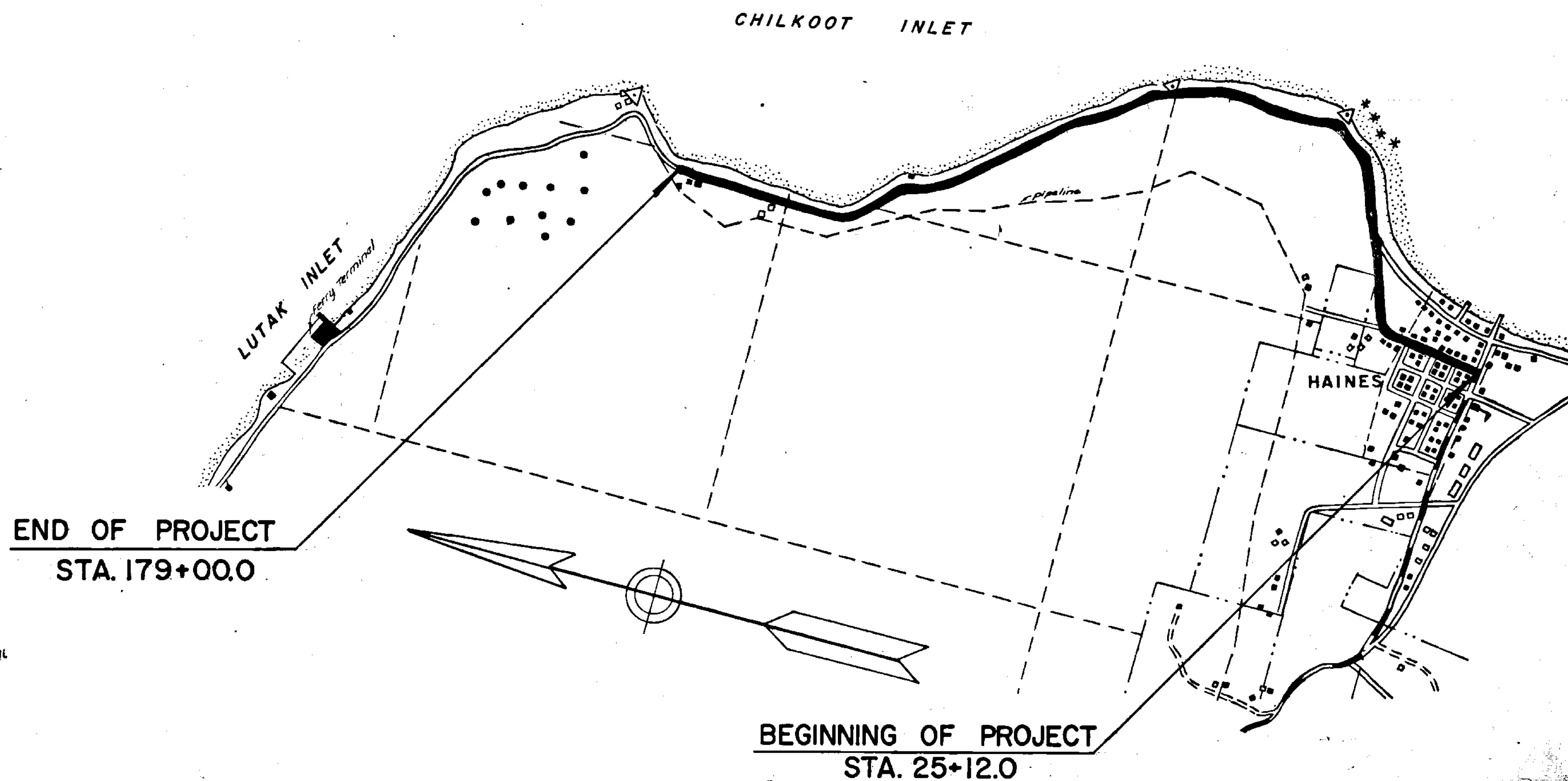
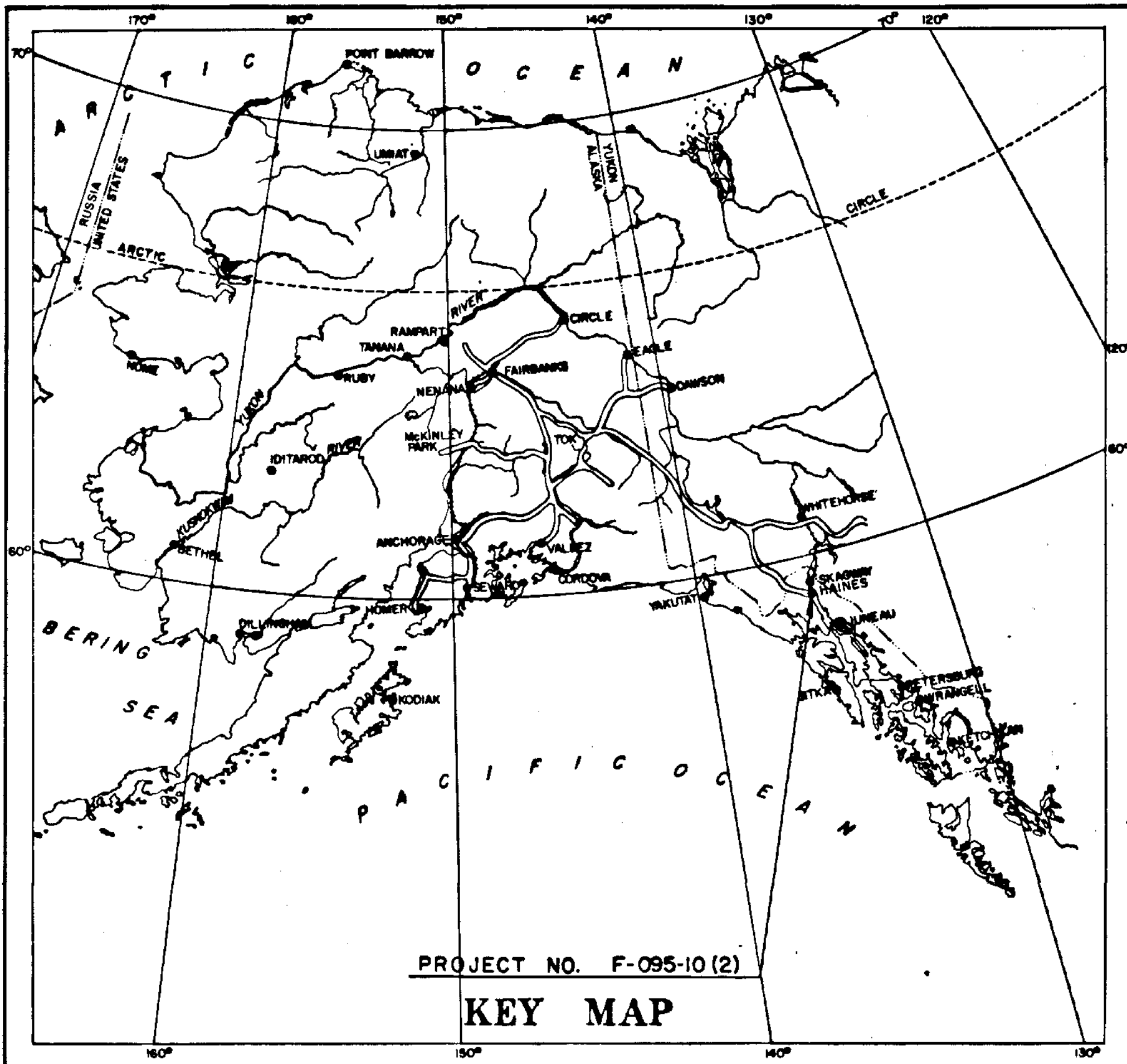


STATE OF ALASKA DEPARTMENT OF HIGHWAYS

HAINES LUTAK ROAD RIGHT-OF-WAY MAP ALASKA PROJECT NO. F-095-10(2)



PROJECT LENGTH 2.914 MI.
NOTE - MINOR EQUATIONS NOT SHOWN

SCALE

0 .25 .50 75 1.0 MI.

4" = 1 MI.

DEPARTMENT OF HIGHWAYS

APPROVED 4/29, 1968
DATE

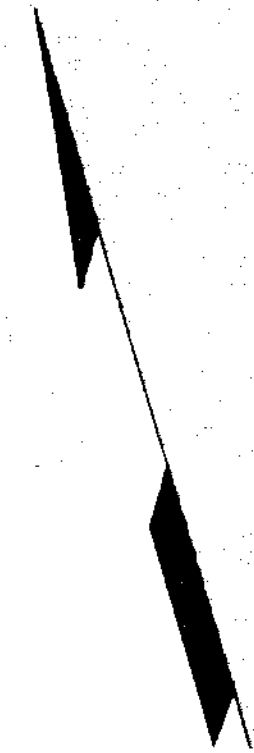
C. E. Stone
COMMISSIONER

DEPARTMENT OF TRANSPORTATION
FEDERAL HIGHWAY ADMINISTRATION

APPROVED _____, 1968
DATE

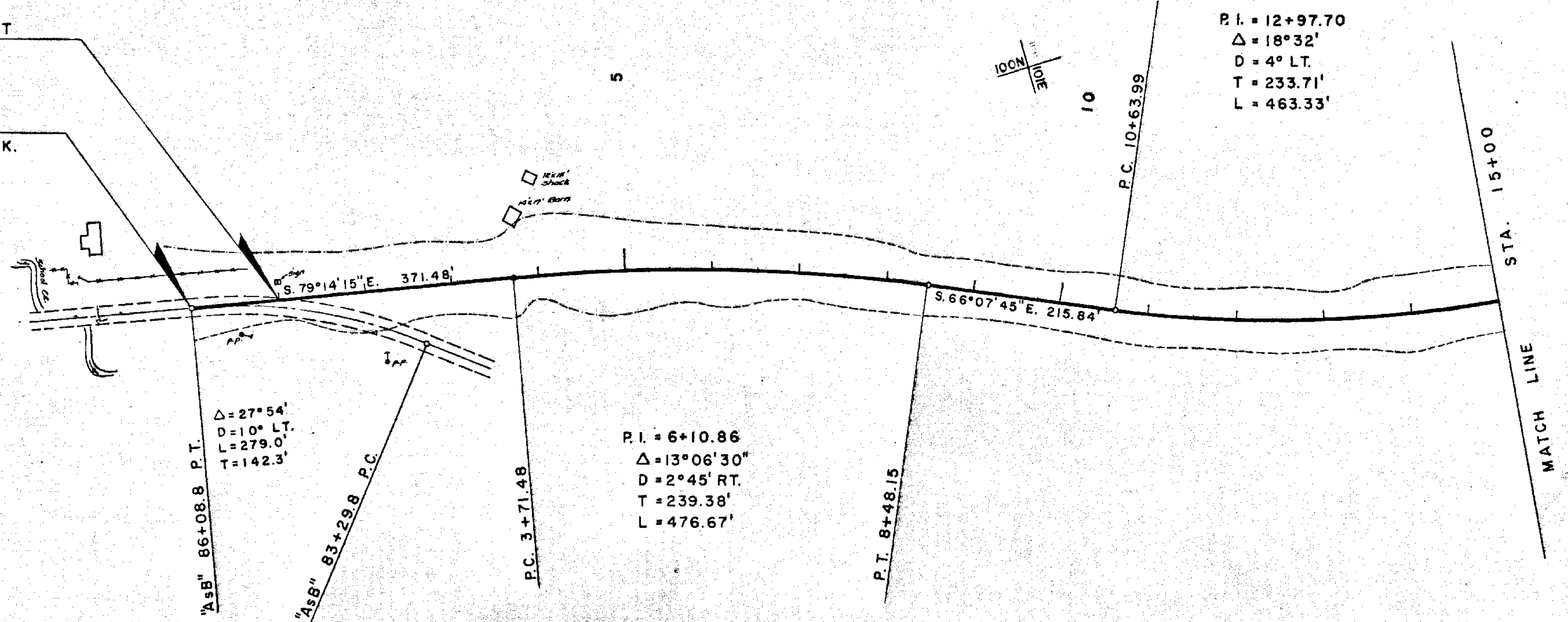
DIVISION ENGINEER

Sheet No.	Traced	Description	Checked	Finished	Route No.



BEGINNING OF PROJECT
1+00

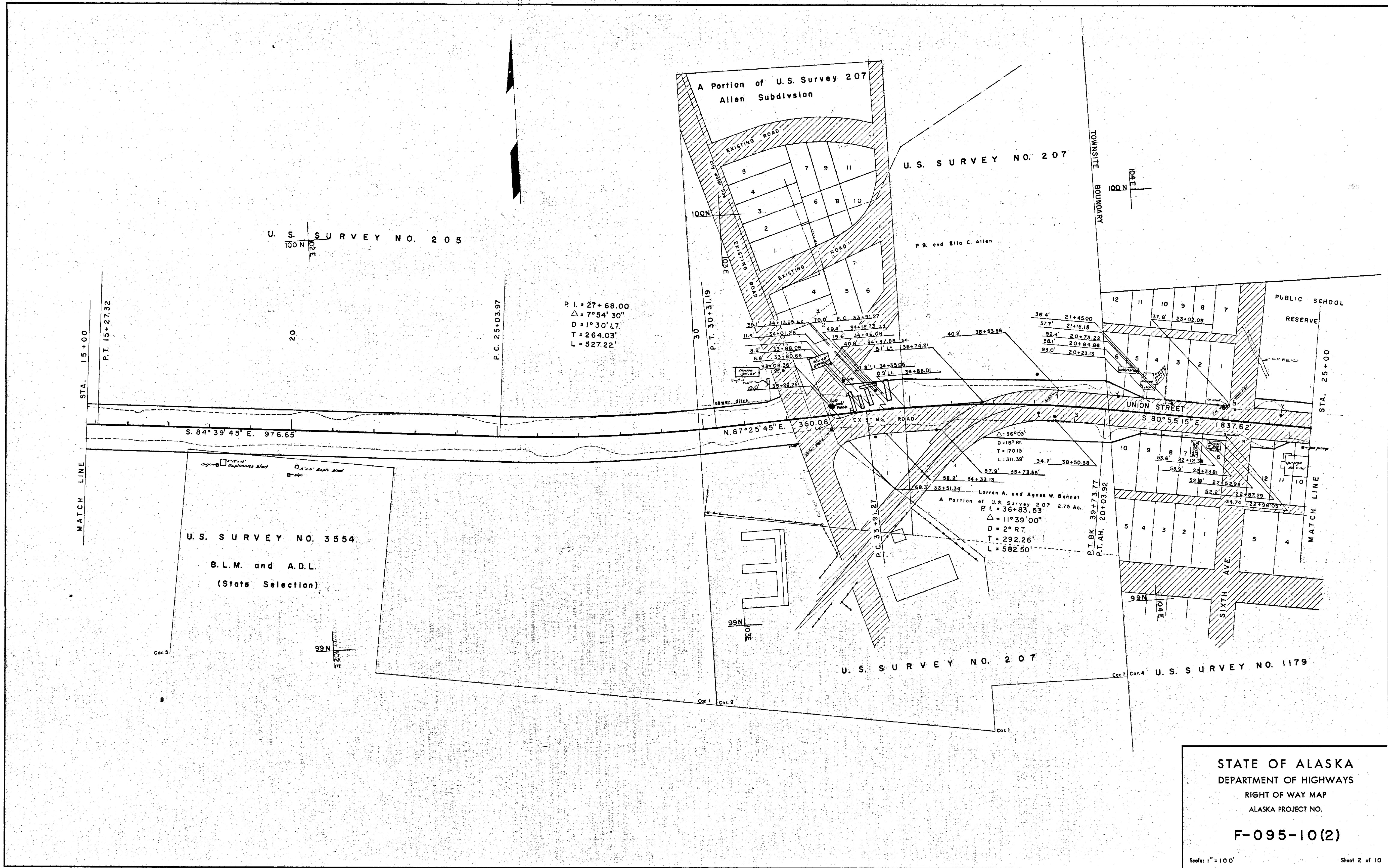
CONTROL P.T.
"AsB" 86+08.8 P.T. BK.



P.I. = 12+97.70
 $\Delta = 18^\circ 32'$
 $D = 4^\circ$ LT.
 $T = 233.71'$
 $L = 463.33'$

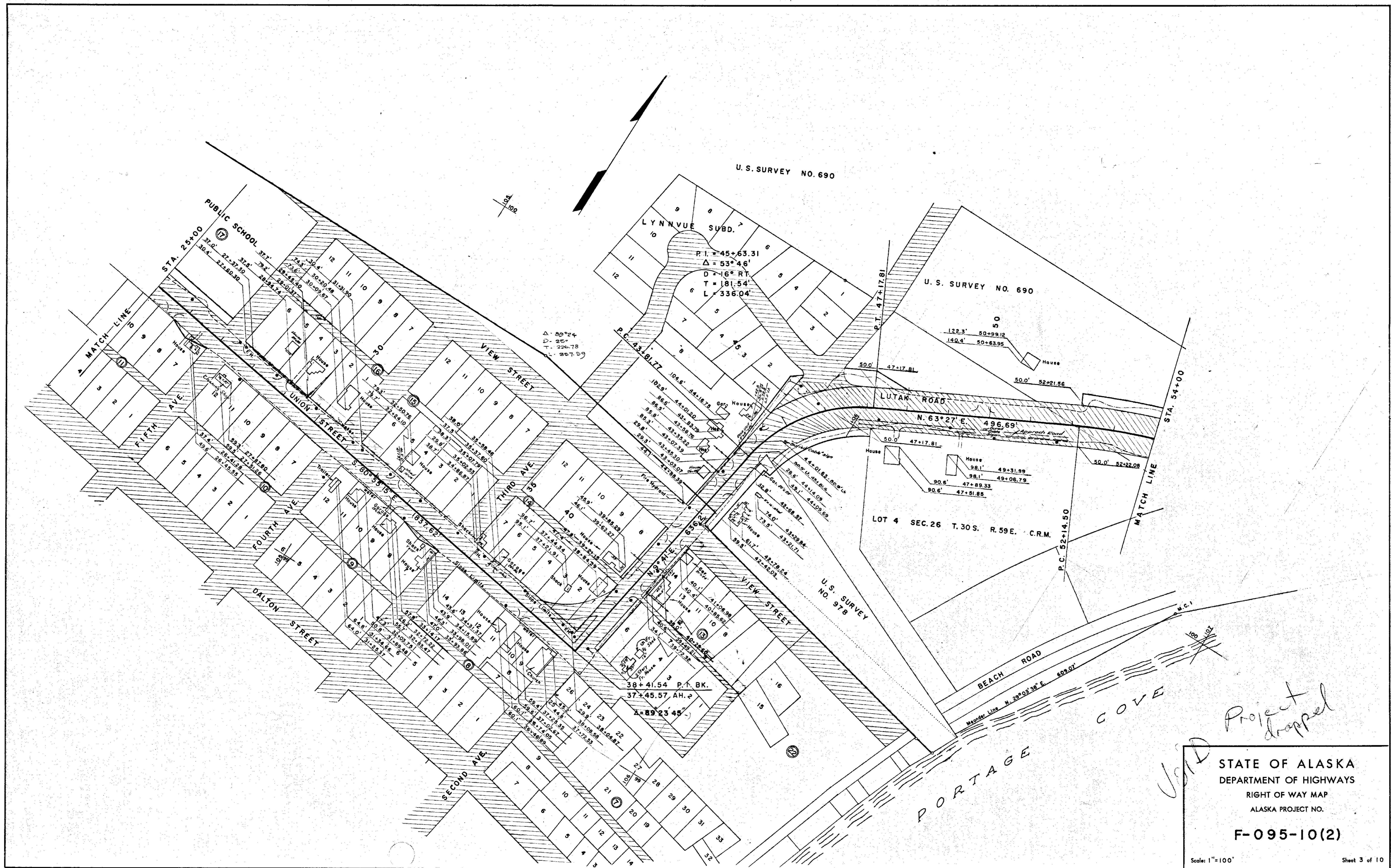
STATE OF ALASKA
DEPARTMENT OF HIGHWAYS
RIGHT OF WAY MAP
ALASKA PROJECT NO.
F-095-10(2)
Scale: 1" = 100' Sheet 1 of 10

Note Book	Traced	Description	Checked	Final	Route No.



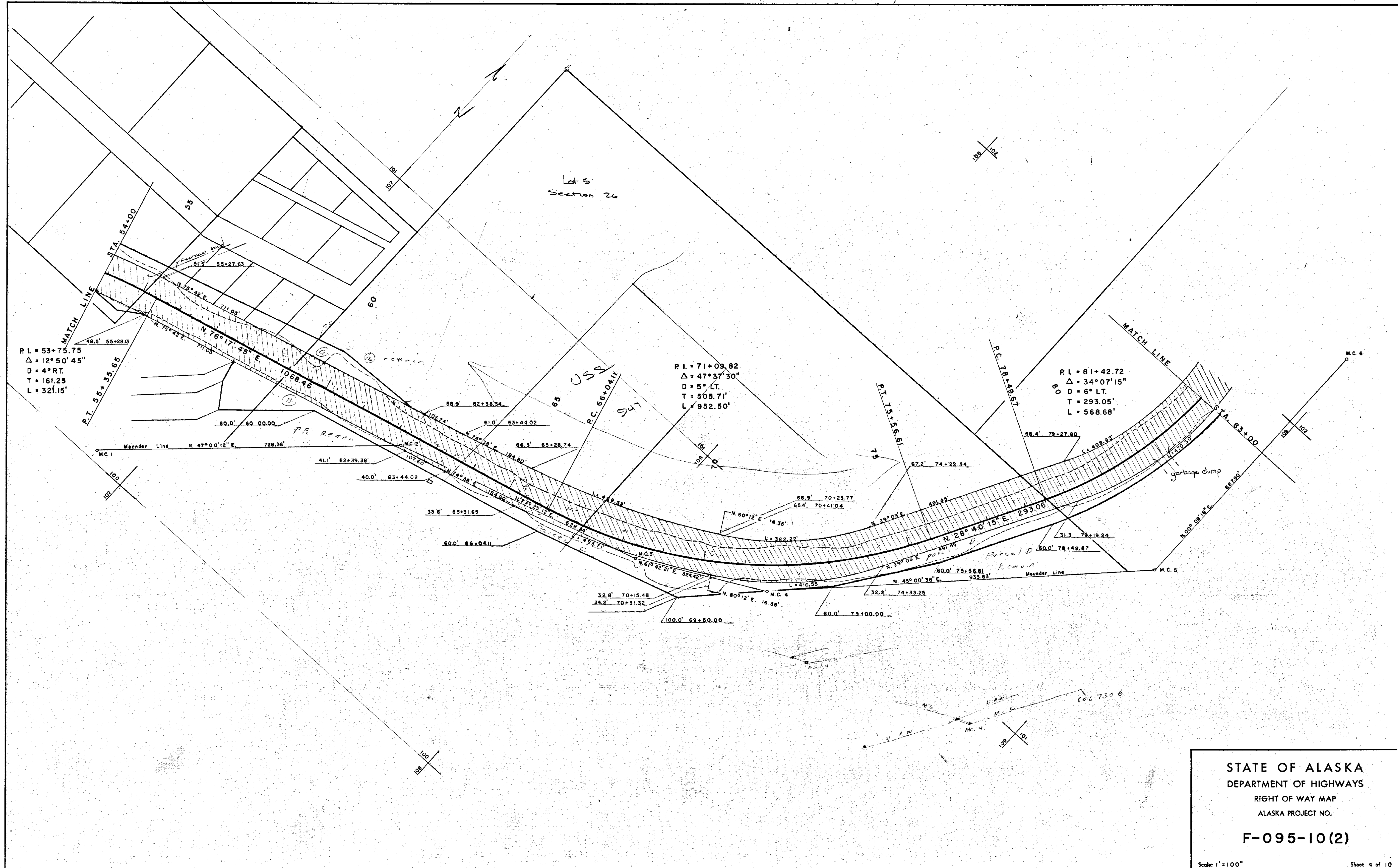
STATE OF ALASKA
 DEPARTMENT OF HIGHWAYS
 RIGHT OF WAY MAP
 ALASKA PROJECT NO.
F-095-10(2)
 Scale: 1" = 100'
 Sheet 2 of 10

Notes	Track	Description	Checked	Final	Revis No.



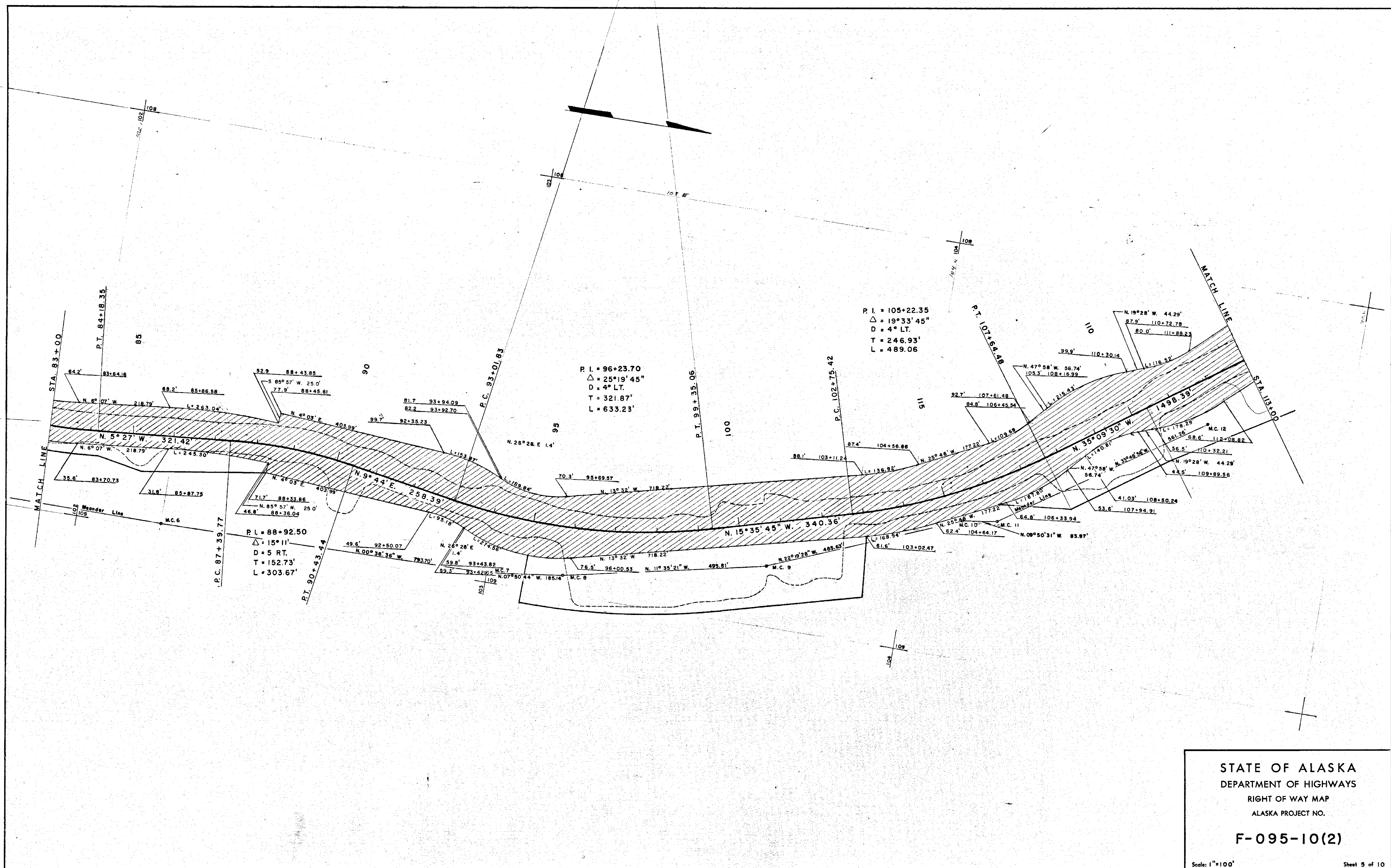
STATE OF ALASKA
 DEPARTMENT OF HIGHWAYS
 RIGHT OF WAY MAP
 ALASKA PROJECT NO.
F-095-10(2)
 Scale: 1"=100'
 Sheet 3 of 10

Notes Book	Traced	Description	Checked	Final	Route No.



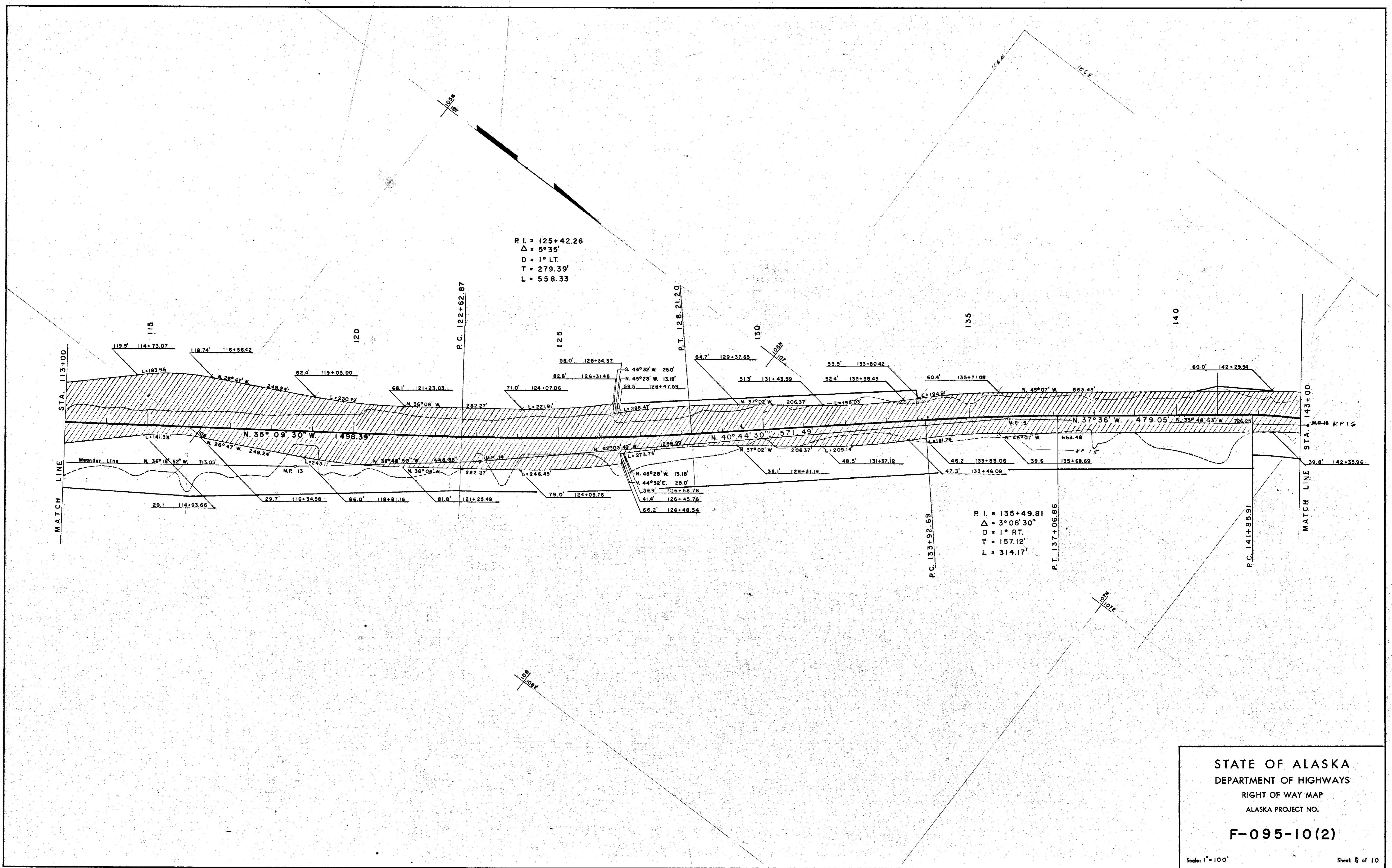
STATE OF ALASKA
DEPARTMENT OF HIGHWAYS
RIGHT OF WAY MAP
ALASKA PROJECT NO.
F-095-10(2)
Scale: 1" = 100'
Sheet 4 of 10

Note Book	Traced	Description	Checked	Route No.



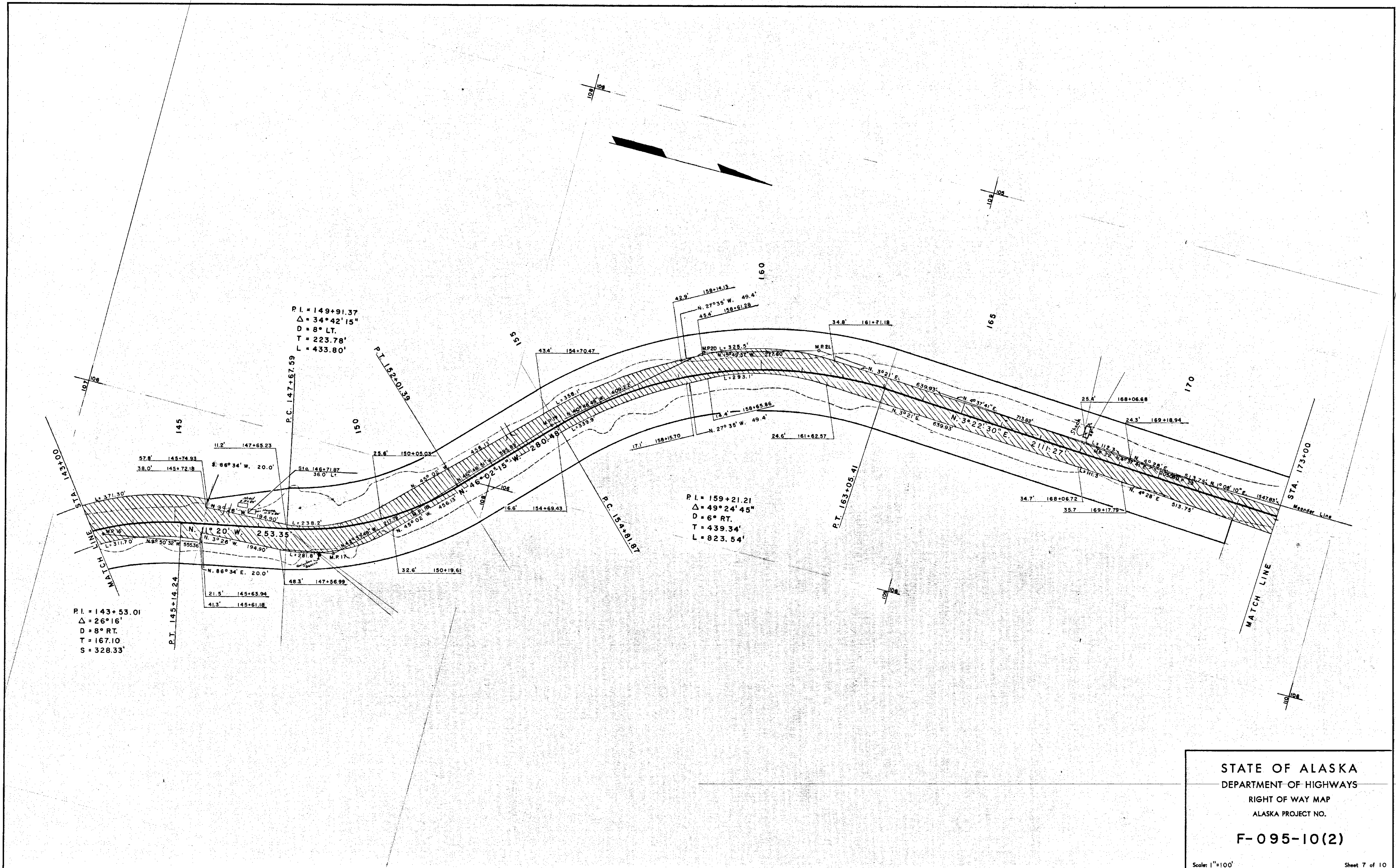
STATE OF ALASKA
 DEPARTMENT OF HIGHWAYS
 RIGHT OF WAY MAP
 ALASKA PROJECT NO.
F-095-10(2)
 Scale: 1"=100'
 Sheet 5 of 10

Noted	Description	Checked	Revised



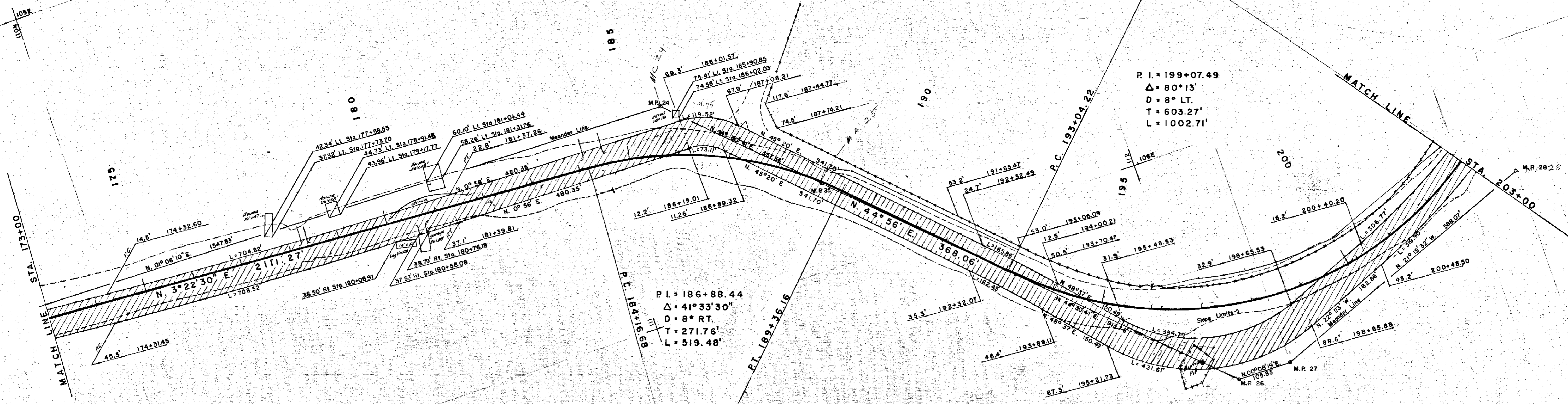
STATE OF ALASKA
DEPARTMENT OF HIGHWAYS
RIGHT OF WAY MAP
ALASKA PROJECT NO.
F-095-10(2)
Scale: 1"=100'
Sheet 6 of 10

Note Book	Tread	Description	Checked	Finished	Route No.



STATE OF ALASKA
 DEPARTMENT OF HIGHWAYS
 RIGHT OF WAY MAP
 ALASKA PROJECT NO.
F-095-10(2)
 Scale: 1"=100'
 Sheet 7 of 10

Note Book	Traced	Description	Checked	Finished	Route No.

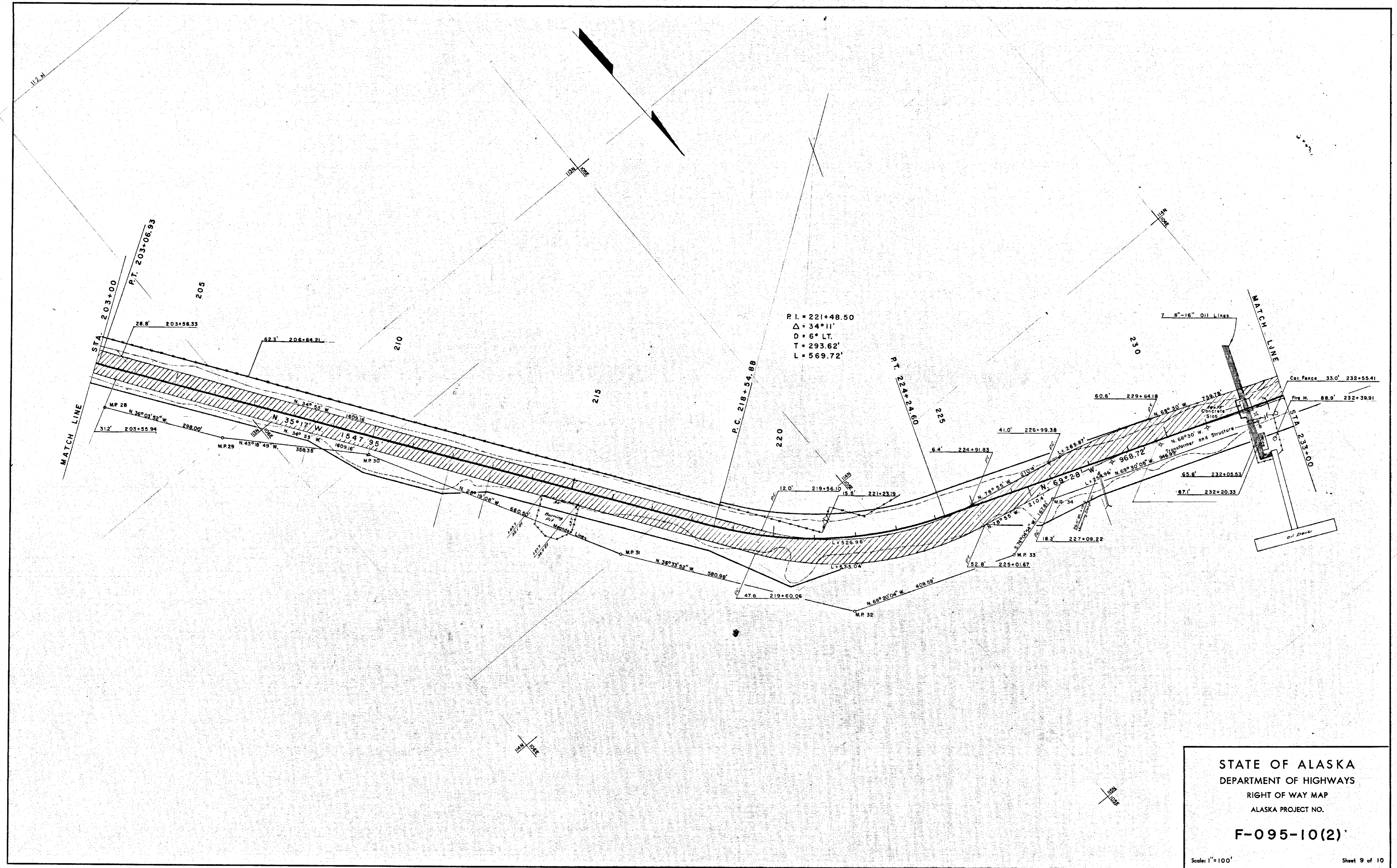


P.I. = 199+07.49
 $\Delta = 80^\circ 13'$
 D = 8° LT.
 T = 603.27'
 L = 1002.71'

P.I. = 186+88.44
 $\Delta = 41^\circ 33' 30''$
 D = 8° RT.
 T = 271.76'
 L = 519.48'

STATE OF ALASKA
 DEPARTMENT OF HIGHWAYS
 RIGHT OF WAY MAP
 ALASKA PROJECT NO.
F-095-10(2)
 Scale: 1"=100'
 Sheet 8 of 10

Note Book	Tread	Description	Checked	Finished	Route No.



STATE OF ALASKA
 DEPARTMENT OF HIGHWAYS
 RIGHT OF WAY MAP
 ALASKA PROJECT NO.
F-095-10(2)
 Scale: 1" = 100'
 Sheet 9 of 10

