

**STATE OF ALASKA
DEPARTMENT OF TRANSPORTATION
&
PUBLIC FACILITIES**

**PLAN AND PROFILE
PROPOSED HIGHWAY PROJECT
SOS - 3(009)
CHILKOOT RIVER BRIDGE
HAINES
GRADING, DRAINAGE AND BRIDGE**

STATE	PROJECT	SHEET NO.	TOTAL SHEETS
ALASKA	SOS-3(009)	I	II

INDEX OF SHEETS

SHEET NO.	DESCRIPTION
1	TITLE SHEET
2	QUANTITIES, MATERIALS SITE, TYPICAL SECT.
3	PLAN AND PROFILE SHEET
4	GENERAL LAYOUT
5	BRIDGE SITE PLAN
6	SUBSTRUCTURE
7	SUBSTRUCTURE AND BRIDGE RAILING
8-11	AS-BUILT REFERENCE SHEETS

The following standard drawings apply to this project: A-1, C-00.04, C-10.02, C-11.02, G-04.13, G-04.31, G-13.11, G-14.03, G-30.02, G-30.13, I-80.00

AS-BUILT PLANS

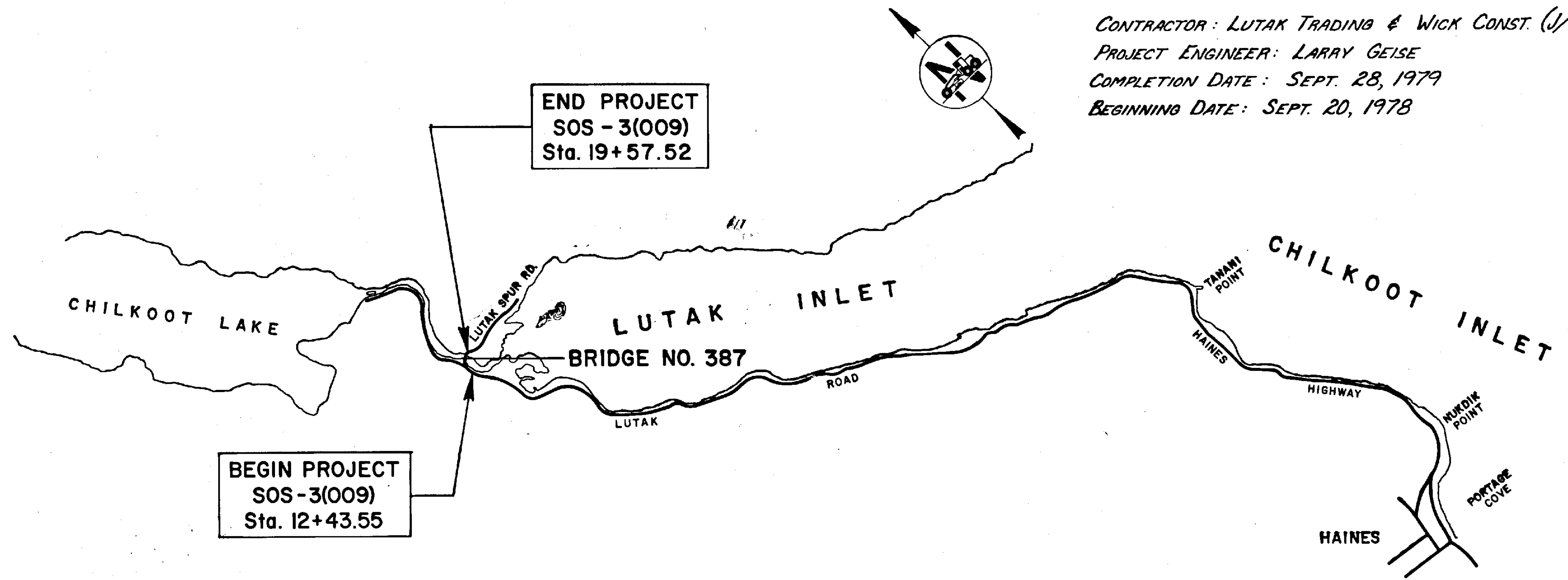
CONTRACTOR: LUTAK TRADING & WICK CONST. (J/V)
PROJECT ENGINEER: LARRY GEISE
COMPLETION DATE: SEPT. 28, 1979
BEGINNING DATE: SEPT. 20, 1978

DESIGN DESIGNATION

ADT 1976	=	10
ADT 1999	=	23
DHV 12%	=	3
D	=	65-35
T	=	7%
V	=	25 MPH

PROJECT SUMMARY

Length of Grading	=	472.47 = 0.089 mi.
Length of Bridge	=	200.00' = 0.038 mi.
Length of Project	=	672.47 = 0.127 mi.
Width of Surfacing	=	24 ft.



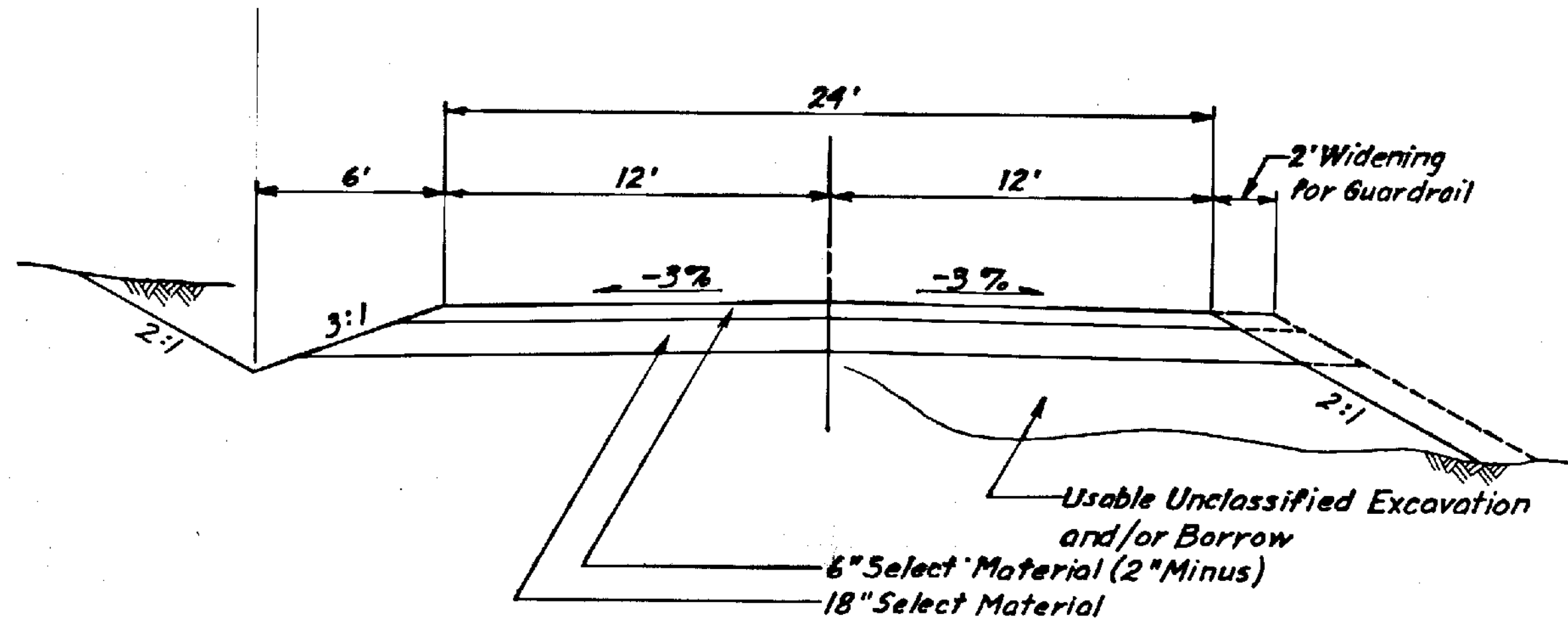
STATE OF ALASKA
DEPARTMENT OF TRANSPORTATION
&
PUBLIC FACILITIES

APPROVED
Wallace K. Wilson • Date *6/15/78*
SOUTHEASTERN REGION DESIGN and
CONSTRUCTION ENGINEER

STATE OF ALASKA
DEPARTMENT OF TRANSPORTATION
&
PUBLIC FACILITIES

APPROVED
R. D. Sherman PE • Date *7/15/78*
DIRECTOR-HIGHWAY DESIGN & CONSTRUCTION

TYPICAL SECTION



STATE	PROJECT DESIGNATION	YEAR	SHEET NO.	TOTAL SHEETS
ALASKA	SOS-3(009)	1978	2	11

GENERAL NOTES

1. GRADE AND ALIGNMENT SHOWN ON THESE PLANS ARE SUBJECT TO MINOR REVISIONS.
2. NO INSTREAM ACTIVITY SHALL TAKE PLACE BETWEEN THE PERIOD JUNE 1 THROUGH OCTOBER 15.
3. WARP SLOPES FROM 2:1 TO 1½:1 50 FEET FROM BRIDGE ABUTMENTS.
4. SELECT MATERIAL WILL NOT BE PAID SEPERATELY BUT SHALL BE PAID FOR UNDER ITEM 203 (5C) BORROW.

GUARDRAIL SUMMARY

STA. to STA.	LENGTH	REMARKS
13+95 14+95	100 R	
14+45 14+95	50 L 75	
16+95 17+82.5	87.5 R 62.5	BURY END
16+95 17+82.5	87.5 L 75	BURY END
TOTAL	300 Lin. Ft.	312.50

ESTIMATE OF QUANTITIES

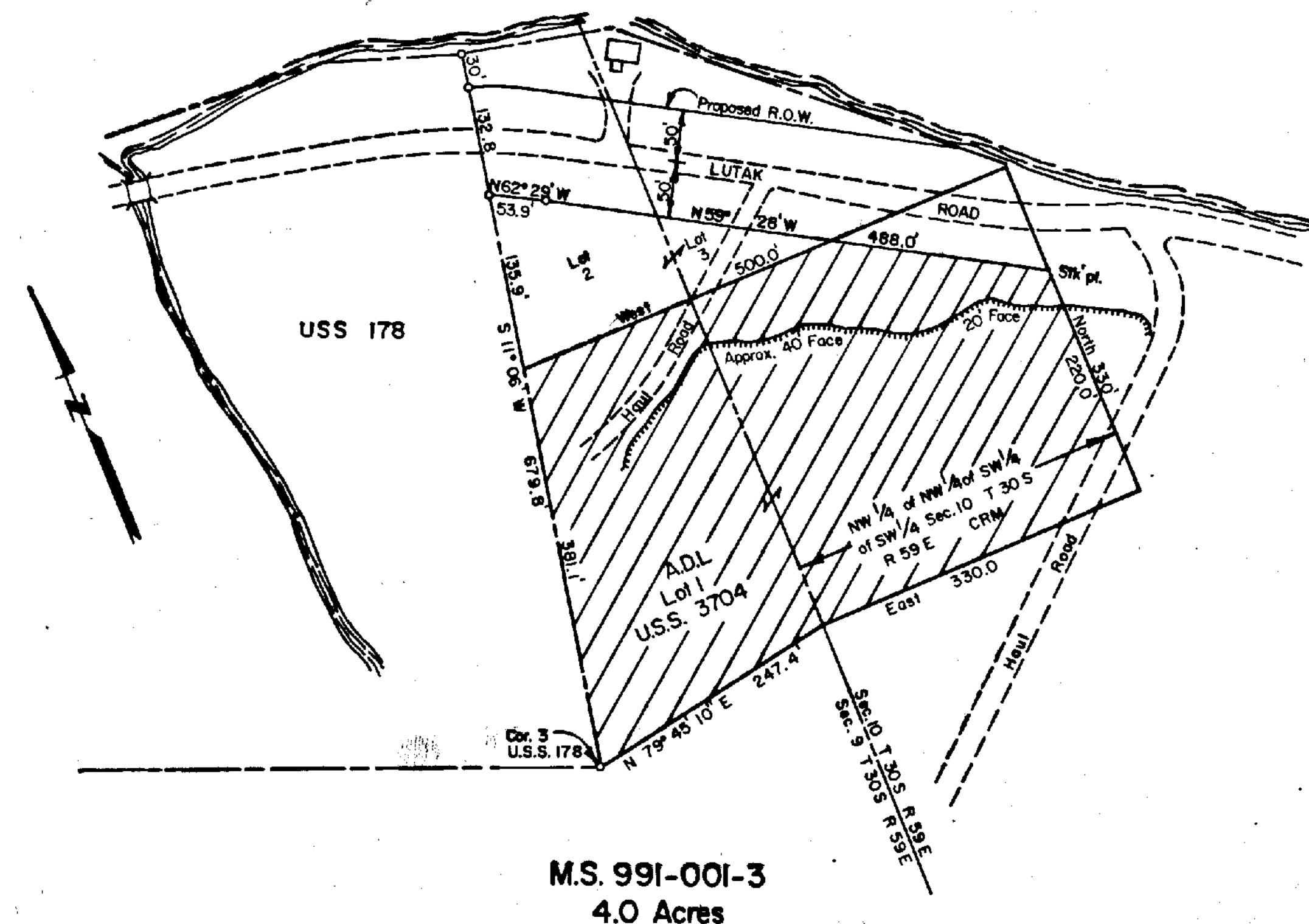
ITEM NO.	ITEM	UNIT	QUANTITY
1	Furnishing and Maintaining Engineering Facilities	L.S.	All Req'd
110 (1)	Mobilization	L.S.	All Req'd
111 (1)	Temporary Errosion and Pollution Control	C.S.	All Req'd
114 (1)	Construction Engineering by the Contractor	L.S.	All Req'd
115 (1)	Traffic Maintenance	L.S.	All Req'd
202 (1)	Removal of Structures and Obstructions	L.S.	All Req'd
203 (3)	Unclassified Excavation	L.S.	630
203 (5C)	Borrow	L.S.	2,500
504 (1)	Structural Steel, Furnished Fabricated & Erected	L.S.	All Req'd
505 (3)	Structural Steel Piles, Furnished & Driven	L.F.	1,104
506 (3)	Treated Timber	L.S.	All Req'd
507 (1)	Metal Bridge Railing	L.F.	404
508 (1)	Transporting, Modifying and Erecting State Furnished Bridge Units (Chilkoot River Bridge)	Each	10
508 (2)	Transportation and Stockpiling State Furnished Bridge Units (Blind Slough Bridge)	Each	5
606 (2)	Beam Type Guardrail Type II Posts	L.F.	300
611 (1)	Riprap, Class II	L.S.	940

All Req'd.
All Req'd.

1,013.50

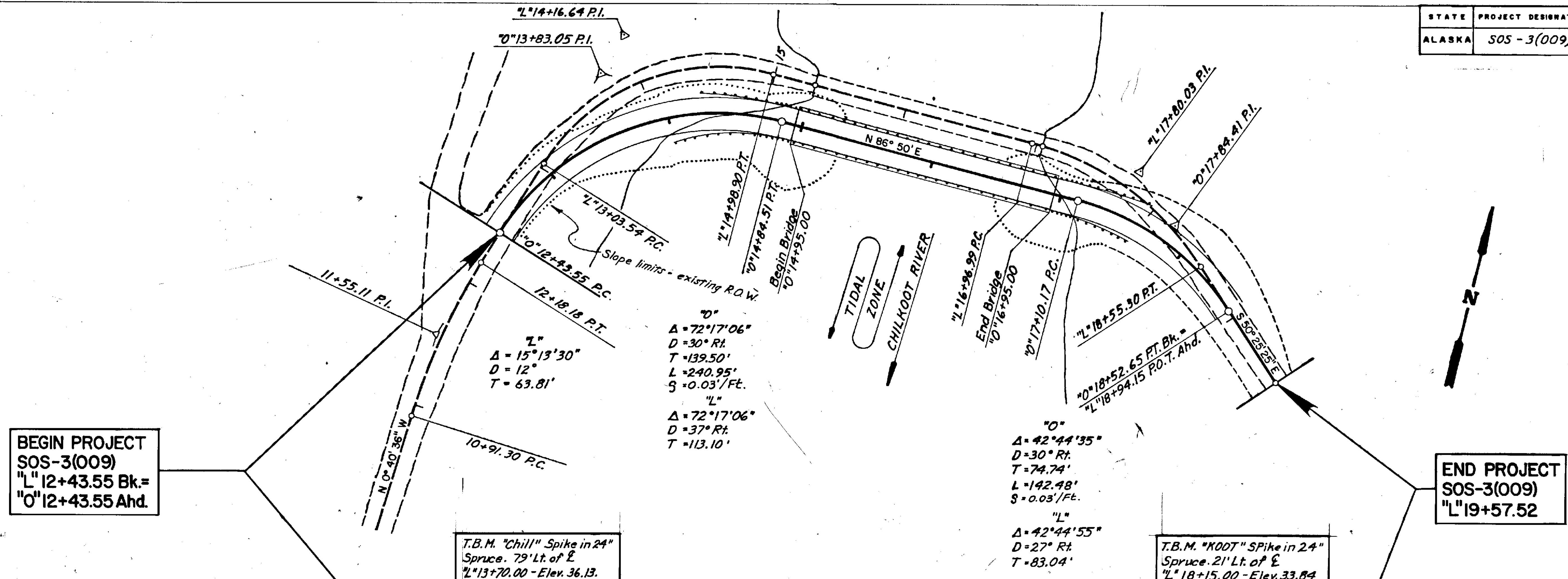
312.50
All Req'd.

FIVE MILE MATERIALS SITE



M.S. 991-001-3
4.0 Acres

STATE	PROJECT DESIGNATION	YEAR	SHEET NO.	TOTAL SHEETS
ALASKA	SOS-3(009)	1978	3	11



T.B.M. "Chill" Spike in 24"
 Spruce. 79' Lt. of E
 "L" 13+70.00 - Elev. 36.13.

T.B.M. "KOOT" Spike in 24"
 Spruce. 21' Lt. of E
 "L" 18+15.00 - Elev. 33.84

Earthwork Equation:
 Embankment = Unclassified Excavation + Borrow × Shrink Factor 0.87

Embankment = ~~2755~~ All Req'd.
 Excavation = ~~627~~ All Req'd.
 Borrow = ~~370~~ All Req'd.
 -2 Inch Select Material = ~~260~~ All Req'd.

