

SE 1/4 SEC 25 TOWNSHIP 29S RANGE 58E OF THE COPPER RIVER MERIDIAN, ALASKA

LEGEND

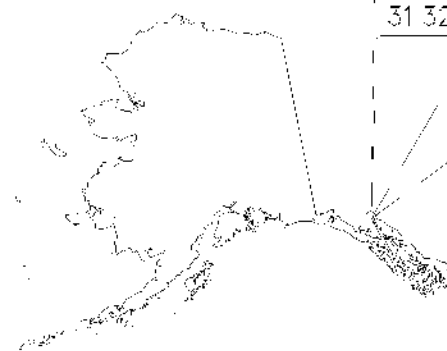
BASE INFORMATION

- HYDROGRAPHY
- SURVEY LINE
- SURVEY LOT LINE
- TOWNSHIP/SECTION GRID
- 1/4 SECTION LINE
- HIGHWAY
- ROAD
- TRAIL
- RAILROAD
- ELECTRICAL POWER LINE
- TELEPHONE LINE
- PIPELINE
- AIRPORT/LANDING STRIP
- HORIZONTAL CONTROL
- CONTROL MONUMENT

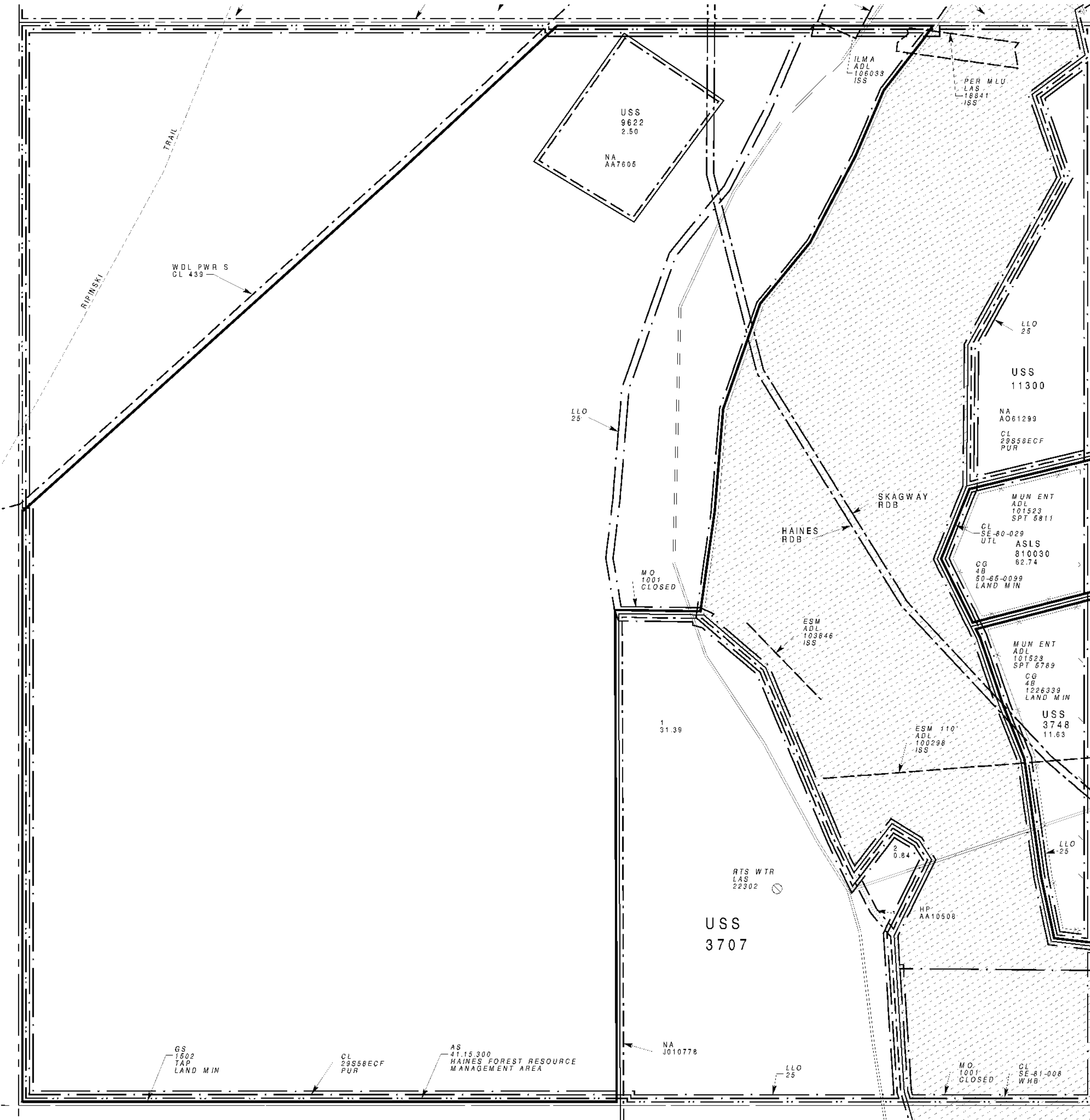
STATUS INFORMATION

- TITLE
- BOUNDARY
- CLASSIFICATION
- DISPOSAL
- MUNICIPAL
- RESTRICTION
- FEDERAL ACTION
- MENTAL HEALTH TRUST
- LIMITS OF ACTION
- NAVIGATIONAL AID
- CABIN PERMIT
- TRAPPING CABIN PERMIT
- TRESPASS LOCATION
- SURFACE WATER RIGHTS APPLICATION
- SURFACE WATER RIGHTS PERMIT
- SURFACE WATER RIGHTS CERTIFICATE
- SUB-SURFACE WATER RIGHTS APPLICATION
- SUB-SURFACE WATER RIGHTS PERMIT
- SUB-SURFACE WATER RIGHTS CERTIFICATE
- IN-STREAM FLOW RESERVATION APPLICATION
- IN-STREAM FLOW RESERVATION CERTIFICATE
- DAM, WEIR, BARRIER APPLICATION
- DAM, WEIR, BARRIER PERMIT
- DAM, WEIR, BARRIER CERTIFICATE

VICINITY MAP



|    |    |    |    |    |    |
|----|----|----|----|----|----|
| 6  | 5  | 4  | 3  | 2  | 1  |
| 7  | 8  | 9  | 10 | 11 | 12 |
| 13 | 14 | 15 | 16 | 17 | 18 |
| 19 | 20 | 21 | 22 | 23 | 24 |
| 25 | 26 | 27 | 28 | 29 | 30 |
| 31 | 32 | 33 | 34 | 35 | 36 |



STATUS PLAT

THE STATE OWNS ALL LAND UNDER WATERS THAT ARE NAVIGABLE-IN-FACT, ARE SUBJECT TO THE EBB AND FLOW OF THE TIDES, OR ARE RIPARIAN OR LITTORAL TO UPLANDS OWNED BY THE STATE.

BASED ON:

COORDINATES:  
ALASKA STATE PLANE ZONE 1  
SE CORNER OF TOWNSHIP:  
X 232755.061  
Y 2735718.184  
LAT 59 18 31.685 N  
LONG 135 33 16.163 W

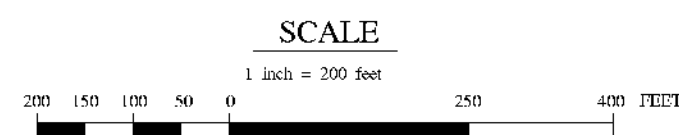
HYDROGRAPHY:  
USGS SKAGWAY (B2) REVISED BY BLM FROM AERIAL HIGH ALTITUDE PHOTOGRAPHY 1978-1985

LAND NET:  
ADL PROTRACTION DIAGRAM CR11-7, APPROVED 09/11/1970  
USRS, 21.40 ACRES; APPROVED 04/23/1920  
USRS, DEPENDENT RESURVEY AND SUBDIVISION OF A PORTION OF SECTION 31, 113.11 ACRES; ACCEPTED 03/24/1970  
USS 974; ACCEPTED 06/07/1960  
USS 3707; ACCEPTED 09/26/1960  
USS 3748; ACCEPTED 06/02/1960  
USS 7314; ACCEPTED 04/20/1983  
USS 11300; ACCEPTED 04/12/1994  
ASLS 810030, FILED 08/10/1981

OTHER ACTIONS AFFECTING DISPOSAL OR USE OF STATE LANDS: SEE THE LAS CASEFILE OR ORIGINAL SOURCE DOCUMENTS FOR ADDITIONAL INFORMATION.

ENTIRELY WIN HAINES BOROUGH AS 414300, HAINES STATE FOREST RESOURCE MANAGEMENT AREA, EXCLUDING PRIVATE LAND, UNIVERSITY OF ALASKA GRANT LAND, EXISTING TRANSPORTATION CORRIDORS, AND BOROUGH SELECTIONS, SUBJECT TO VALID EXISTING RIGHTS AS 4121610; ALASKA CHUKAT BALD EAGLE PRESERVE, EXCLUDING PRIVATE LAND, APPROVED OR PENDING LAND SELECTIONS MADE BY THE HAINES BOROUGH, UNIVERSITY OF ALASKA GRANT LAND, AND EXISTING TRANSPORTATION AND UTILITY CORRIDORS, SUBJECT TO VALID EXISTING RIGHTS. THE STATE LAND AND WATER ARE CLOSED TO MINERAL ENTRY UNDER AS 38.05.135-38.05.275, TO COMMERCIAL TIMBER HARVEST, AND TO SALE UNDER STATE LAND DISPOSAL LAWS.

GRAPHIC ILLUSTRATION ONLY. SOURCE DOCUMENTS REMAIN THE OFFICIAL RECORD. CONSULT LAND ADMINISTRATION SYSTEM (LAS) CASEFILE FOR ADDITIONAL INFORMATION.



ATTENTION STATUS PLAT USERS: ON THIS PLAT, ALL STATUS LINES CLOSE FOR ACTIONS THAT EXTEND INTO ADJACENT TOWNSHIPS; THIS INCLUDES STATUS LINES SUCH AS DISPOSAL, MUNICIPAL, TITLE CLASSIFICATION, ETC. PLEASE REFER TO ADJACENT TOWNSHIPS OR LAS TO DETERMINE IF ACTIONS EXTEND BEYOND THE BOUNDARIES SHOWN ON THIS PLAT. REMEMBER TITLE, CLASSIFICATION, AND RESTRICTION LINES ALWAYS CLOSE ON ALL PLATS.



A PRODUCT OF THE  
STATE OF ALASKA  
DEPARTMENT OF NATURAL RESOURCES  
LAND RECORDS INFORMATION SECTION

SE 1/4  
SEC 25  
SP  
TWP 29S  
RNG 58E  
CRM

PLAT CURRENT TO 03/18/2004, REFER TO THE DNR STATUS PLAT TRACKING SYSTEM (NP45/NP62) FOR OTHER PENDING ACTIONS ON THIS TOWNSHIP/PLAT

CHECKED BY: DAVE LUCK

ARC Update