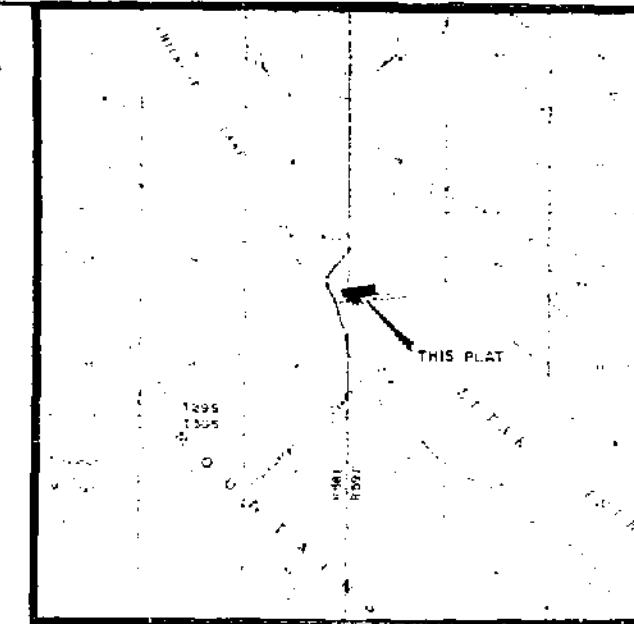
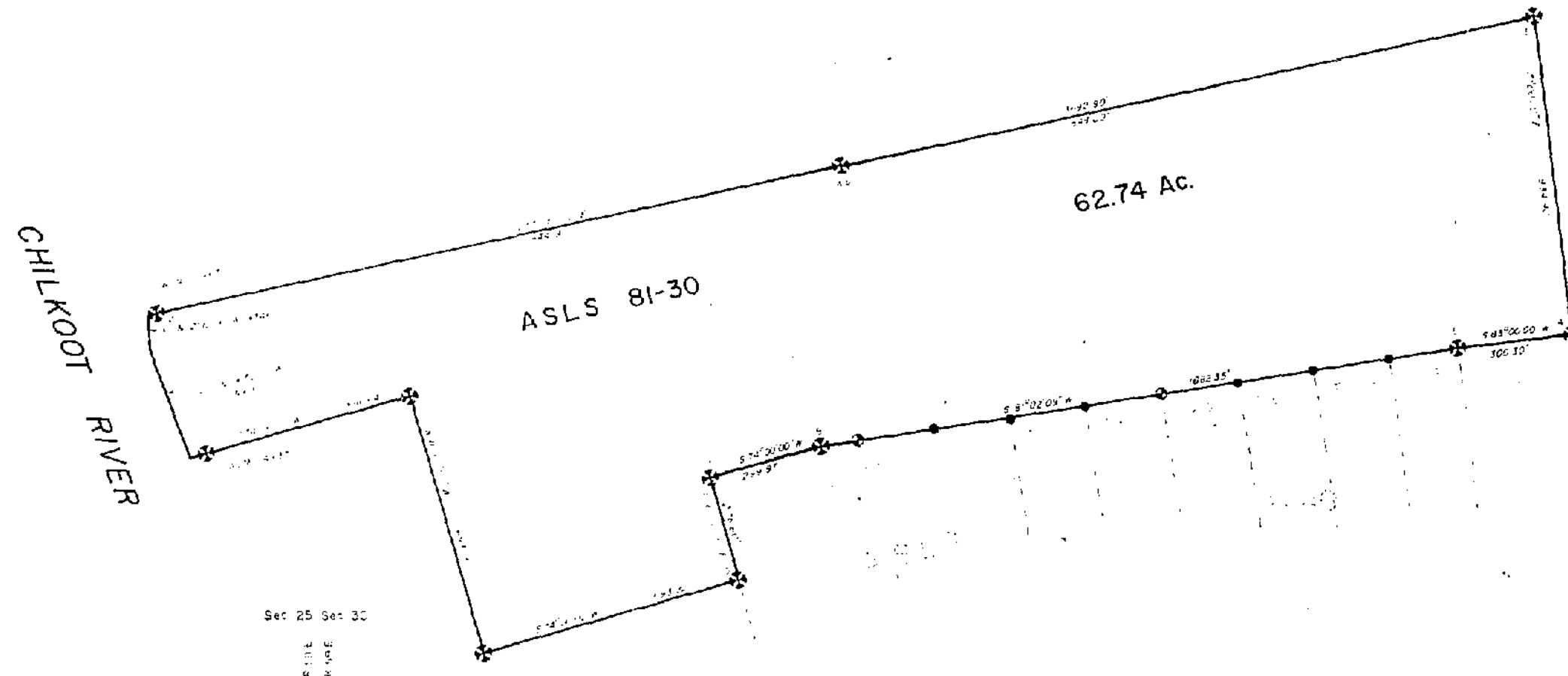


PROTRACTED SECTION 25, T29S, R58E, &
PROTRACTED SECTION 30, T29S, R59E, CRM, AK.



VICINITY MAP



Sec 25 Sec 30
SCALE
1" = 200'

- NOTES**
1. This plat was prepared from the original survey records.
 2. The monument locations shown on this plat are those of the original survey.
 3. The monument locations shown on this plat are those of the original survey.
 4. The monument locations shown on this plat are those of the original survey.
 5. The monument locations shown on this plat are those of the original survey.
 6. The monument locations shown on this plat are those of the original survey.
 7. The monument locations shown on this plat are those of the original survey.
 8. The monument locations shown on this plat are those of the original survey.
 9. The monument locations shown on this plat are those of the original survey.
 10. The monument locations shown on this plat are those of the original survey.

- LEGEND**
- B.M. Monument (not recovered)
Monument numbers as per original survey
 - Brass Cap Monument (not recovered)
ASLS 71-40 (not recovered)
 - 5/8" x 30" steel rod with cap set
with ASLS 71-40 (not recovered)

SELECTION INFORMATION
Community Grant 4
Tentative Approval dated 8-3-64
Patent No. 50-05-0059 dated 8-17-64

I hereby certify that I am a duly licensed and bonded to practice land surveying in the State of Alaska, and that this plat was made by me or under my direct supervision, and that all dimensions and other details are correct.

Date July 9, 1981 Reallocation Number 13315
Mike S. Sullivan
Professional Land Surveyor



7-23-81
23 day of July 1981
J. M. Graham
12-16-82

7-15-1981
Division of Technical Services
Submitted to the State for filing on this 15th day of July 1981
Remitted to the State for filing on this 13-10-81



ALASKA STATE LAND SURVEY No. 81-30
A PAPER PLAT OF THE REMAINDER OF LOT 3, U.S. SURVEY 4514

AREA = 62.74 ACRES = 25.39 HECTARES

81-30
11/15/81
11/15/81
A. S.

DATE OF SURVEY Original 1964, 1978 Final 12-18-82	NAME OF SURVEYOR Divisional Technical Services
STATE OF ALASKA DEPARTMENT OF NATURAL RESOURCES DIVISION OF TECHNICAL SERVICES ANCHORAGE, ALASKA	
ALASKA STATE LAND SURVEY No. 81-30 A paper plat of the remainder of Lot 3, U.S. Survey No. 4514 With a Protracted Sec 25, T29S, R58E, B. Protracted Sec 30, T29S, R59E, CRM, Alaska	
DRAWN BY DATE 8/2/81	APPROVAL/RECOMMENDED DATE 8/2/81
SCALE 1" = 200'	CHECKED BY DATE 8-1-81
	FILE NO. 81-30