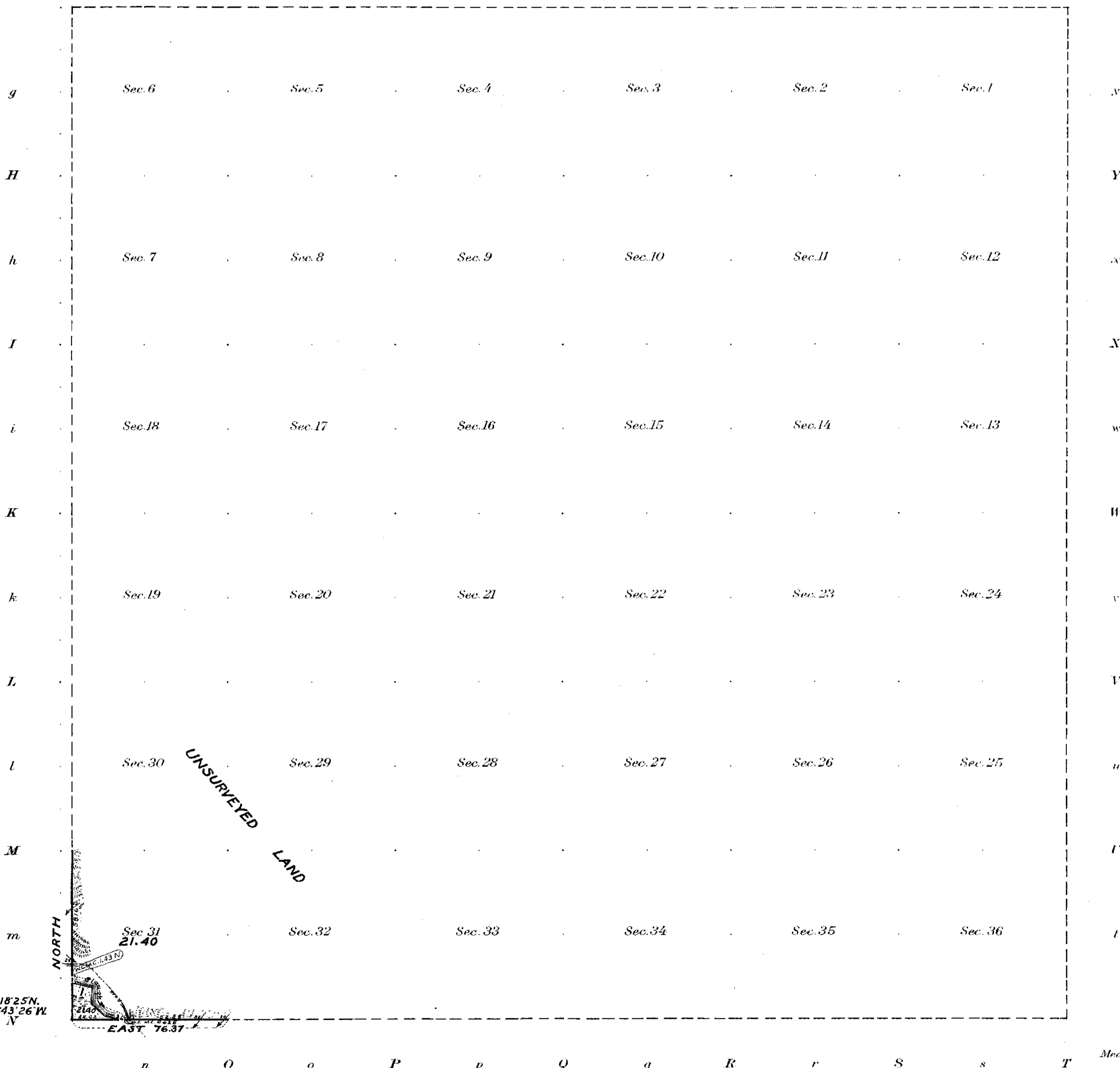


Township No. 29 South Range No. 58 East of the Copper River Meridian, Alaska.

G F F e E d D c C b B a A



Lat. 59° 18' 25" N.  
Long. 135° 43' 26" W.

NORTH

UNSURVEYED LAND

Sec. 31  
21.40

EAST 76.37

Areas in Acres	
Public Land	21.40
Indian Reservation	
Indian Allotments	
Mineral Claims	
Water Surface	
<b>Total Area</b>	<b>21.40</b>

0 10 20 40 80

Scale 40 Chains to an inch  
Mean Magnetic Declination

n O o P p Q q R r S s T

Surveys Designated	By Whom Surveyed	No.	Date of instructions	Amount of Surveys			When Surveyed	
				Mls.	chs.	lks.	Begun	Completed
West Boundary	E. C. Guerin,	12	May 18, 1919.	1	00	00	July 19, 1919	July 19, 1919
South Boundary	U. S. Surveyor,	12	May 18, 1919.	0	76	37	July 19, 1919	July 21, 1919
Meanders		12	May 18, 1919.	0	36	14	July 23, 1919	July 23, 1919

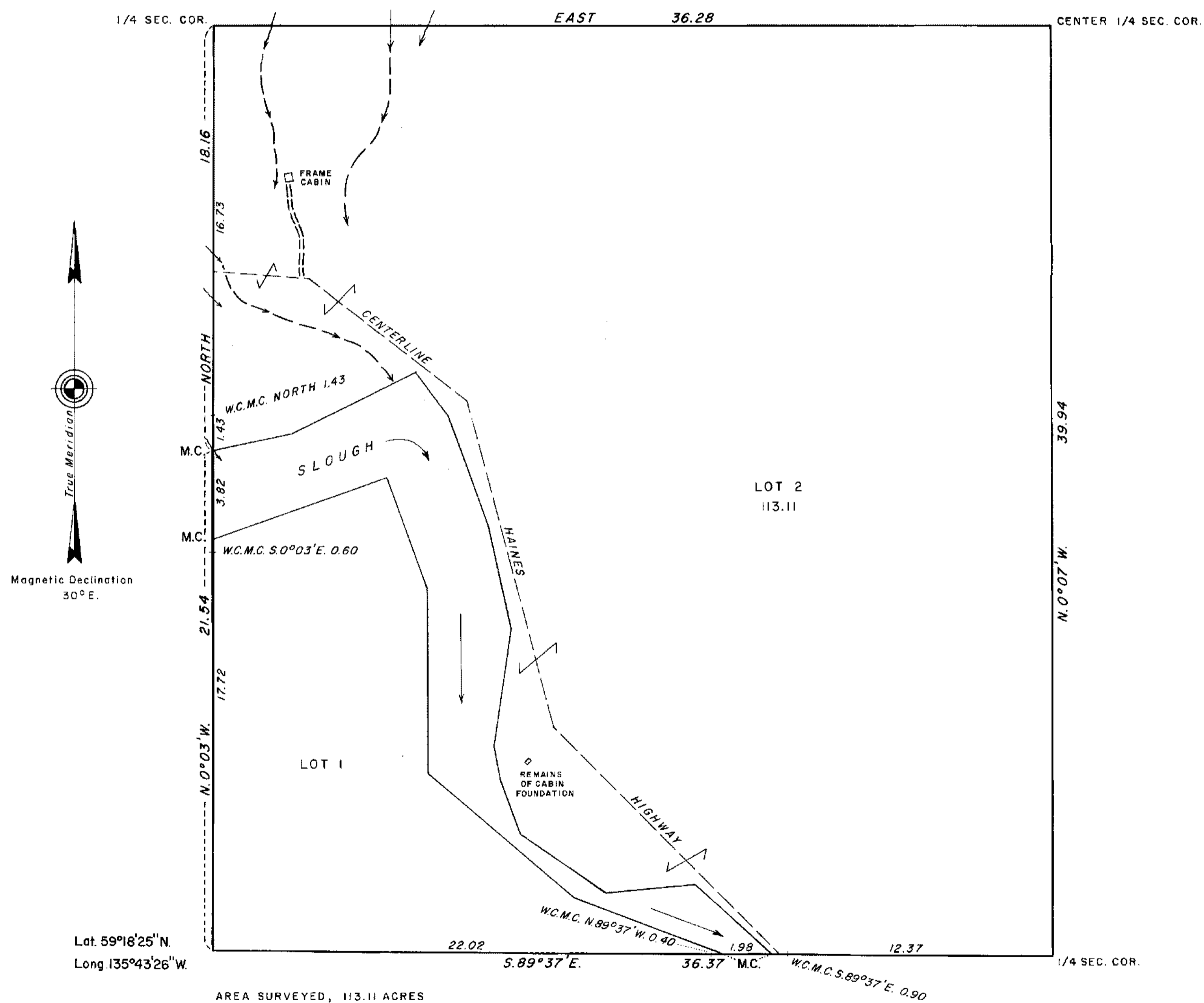
The above map of Township No. 29 South Range No. 58 East of the Copper River Meridian Alaska is strictly conformable to the field notes of the survey thereof on file in this office, which have been examined and approved

U. S. Surveyor General's Office.  
Juneau, Alaska, April 23, 1920.

*P. J. Summers*  
Surveyor General.

TOWNSHIP 29 SOUTH, RANGE 58 EAST, COPPER RIVER MERIDIAN, ALASKA  
DEPENDENT RESURVEY AND SUBDIVISION OF A PORTION OF SECTION 31

SECTION 31,  
SW. 1/4



A portion of the south and west boundaries were surveyed by E. C. Guerin, U. S. Surveyor, in 1919.

This plat represents a dependent resurvey of portions of the south and west boundaries of the township, designed to restore the corners in their true original locations according to the best available evidence, and the subdivision of a portion of section 31, T. 29 S., R. 58 E., Copper River Meridian, Alaska.

The surveys were executed by Hobart B. Hyatt, Supervisory Cadastral Surveyor, beginning September 30, 1967, and completed October 6, 1967, pursuant to Special Instructions dated September 21, 1967, for Group No. 192, Alaska.

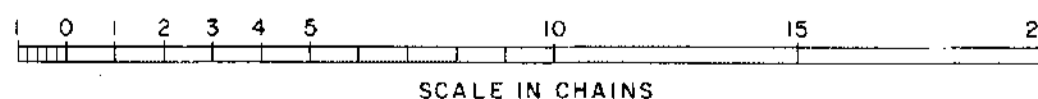
UNITED STATES DEPARTMENT OF THE INTERIOR  
BUREAU OF LAND MANAGEMENT  
Washington, D. C. March 24, 1970

This plat is strictly conformable to the approved field notes, and the survey, having been correctly executed in accordance with the requirements of law and the regulations of this Bureau, is hereby accepted.

For the Director

*Clark L. Lumm*

Chief, Division of Cadastral Survey



DATE FEBRUARY 13, 2009

# TOWNSHIP 29 SOUTH, RANGE 58 EAST, OF THE COPPER RIVER MERIDIAN, ALASKA DEPENDENT RESURVEY LOT 2, SECTION 31

A history of surveys is contained in the field notes.

Lotting affected by accretion or erosion are shown in parts, denoting land and water areas, for informational purposes only. Accreted land shown on this plat is not included in the original acreage and is attached to Lot 2.

This plat represents the dependent resurvey of Lot 2, and the informational traverse of the right-of-way centerline of the Haines Highway, through Lot 2, Section 31, Township 29 South, Range 58 East, Copper River Meridian, Alaska.

All surveyed lines are mean bearing.

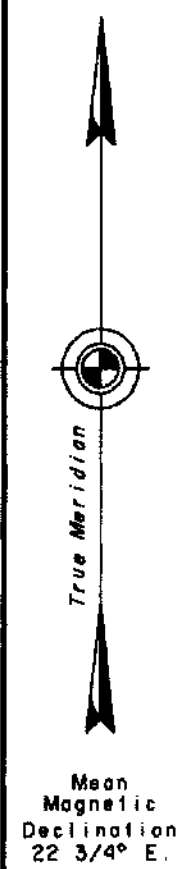
This survey was executed by John D. Taivalkoski, Cadastral Surveyor, August 4 through August 14, 2007, in accordance with the specifications set forth in the Manual of Surveying Instructions, 1973, and Supplemental Special Instructions for Group No. 192, Alaska, dated June 28, 2007, and approved July 2, 2007.

Bearings and distances of the right-of-way centerline of the Haines Highway are omitted from this plat and shown only in the field notes.

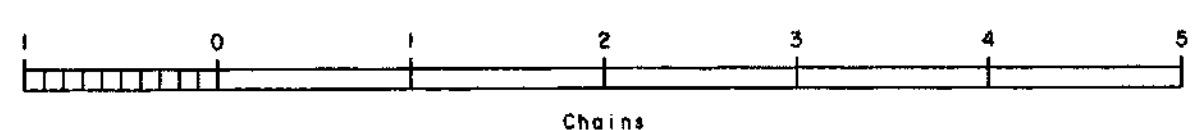
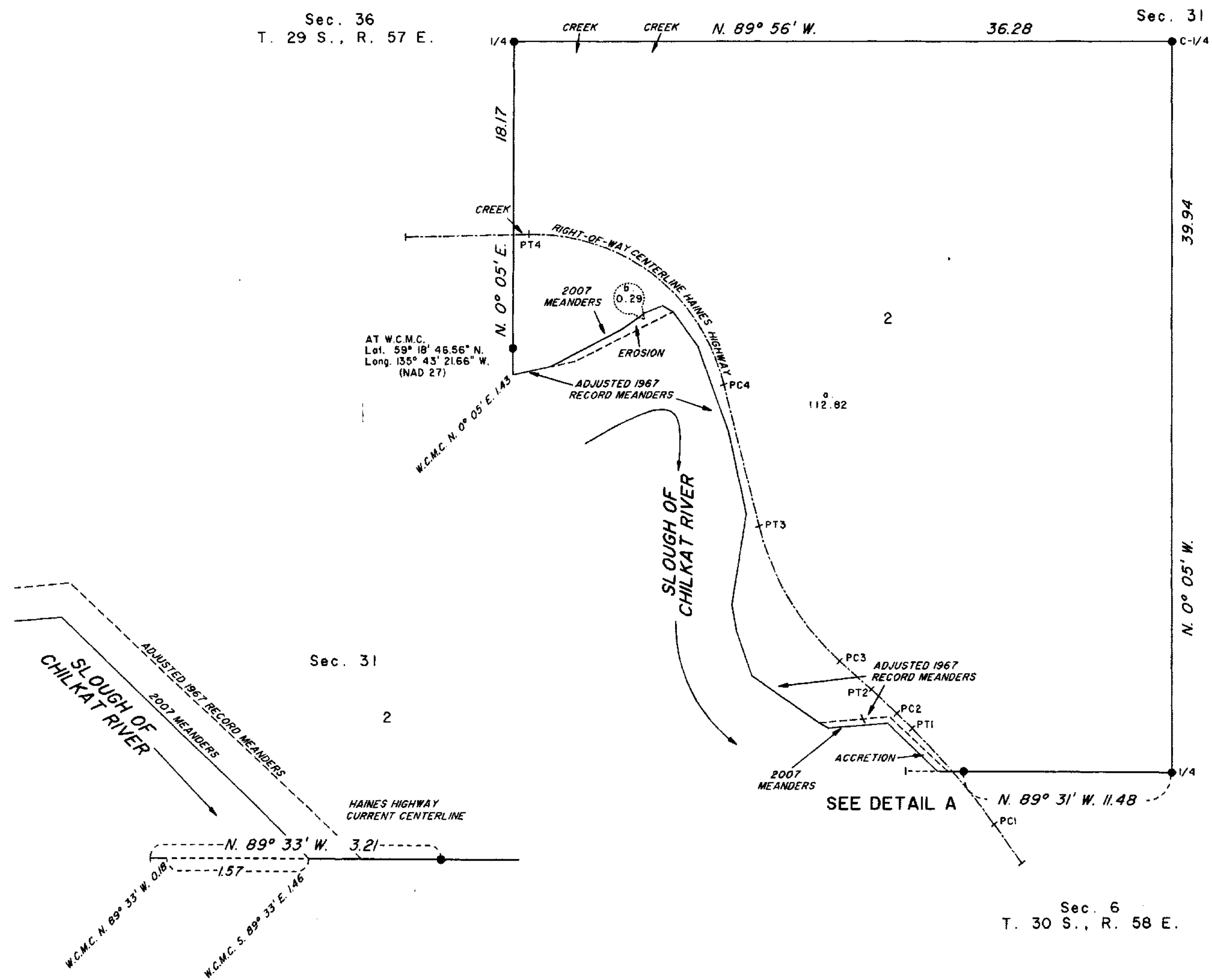
### AREA TABLE

Sec. 31, Lot 2	
a. 112.82	1967 Remainder
b. 0.29	Erosion
113.11	1967 Lot 2

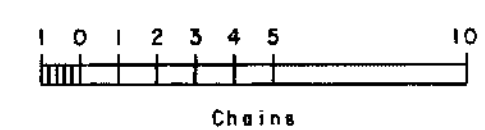
0.27 Accreted land attached to Lot 2



Mean Magnetic Declination 22 3/4° E.



DETAIL A



UNITED STATES DEPARTMENT OF THE INTERIOR  
BUREAU OF LAND MANAGEMENT  
Anchorage, Alaska

This plat is strictly conformable to the approved field notes, and the survey, having been correctly executed in accordance with the requirements of law and the regulations of this Bureau, is hereby accepted.

For the Director

*John Swartz* 12/23/2008  
Date

Deputy State Director for Cadastral Survey, Alaska

"I"

8888

# FIELD NOTES

OF THE SURVEY OF THE

SUBDIVISION AND MEANDER LINES

OF

FRACTIONAL TOWNSHIP NO. 29 SOUTH, RANGE NO. 58 EAST.

RECEIVED  
SUR. GEN. OFFICE

APR 2 - 1920

ANSWERED

Of the COPPER RIVER Meridian,

In the ~~State of~~ TERRITORY OF ALASKA.

EXECUTED BY

E. C. GUERIN, U. S. SURVEYOR.

In the capacity of U. S. Surveyor, under instructions dated May 18, 1919,  
issued by the ~~United States Surveyor General~~ Assistant Supervisor of Surveys to govern surveys included in  
Group No. 18, which were approved by the Commissioner of the General Land  
Office, \_\_\_\_\_, 1919.

Survey commenced July 23, \_\_\_\_\_, 1919.

Survey completed July 23, \_\_\_\_\_, 1919.

## INDEX DIAGRAM.

*Township* No. 29 South, ..... *Range* No. 38 East. ....

6	5	4	3	2	1
7	8	9	10	11	12
18	17	16	15	14	13
19	20	21	22	23	24
30	29	28	27	26	25
31 <i>7/23</i>	32	33	34	35	36

## Frac. T.29 S., R.58 E.

Survey commenced July 23, 1919, and executed with an Ainsworth light mountain transit No.2659. The horizontal limb is provided with double verniers placed opposite each other, reading to single minutes of arc, which is also the least count of the verniers of the vertical circle.

The instrument was examined and approved by the Ass't. Supervisor of Surveys, May 20, 1919.

I examine the adjustments of the transit and find them correct.

All measurements were taken with a 5 chain steel tape, first chain graduated to single links and remaining four chains graduated every ten links. Angles of slope were taken with a clinometer and all measurements reduced to the horizontal.

All lines in this township were deflected from the North and West Boundary of the twp., and carried by fore and backsights.

---

Commencing at the meander cor. of frac. secs. 31 and 36, on West bdy. of the Township, which is an iron post, 12 ins. above ground, firmly set, marked and witnessed as described in the official survey of the boundaries of frac. Township No.29 South, Range No.57 East.

Thence with the meanders of slough, down stream, on right bank in sec. 31.

Through dense brush,

N.70°30'E.,	8.00 chs.	Bank 4 ft. high.
S.20°15'E.,	5.00 "	
South,	8.00 "	
S.49°30'E.,	8.20 "	
S.70°00'E.,	6.94 "	To the meander cor. of

691

Frac. T.29 S., R.58 E.

---

frac. secs. 31 and 6, on the South bdy. of the Township.  
Land, level.  
Soil, sandy loam, 1st rate.  
Timber, cottonwood.  
Undergrowth, alder, willow and red willow.

---

## GENERAL DESCRIPTION.

This township consists of level, river bottom land, most of which is covered with a dense growth of alder, willow and red willow brush, interspersed with small cottonwood.

The soil is sandy loam, 1st rate.

There are no settlers in the surveyed portion of the township.

The Haines-Porcupine road parallels the slough on the East, or left bank of slough.





CERTIFICATE OF UNITED STATES SURVEYOR.

I, E. C. Guerin, U. S. Surveyor, hereby certify upon honor that, in pursuance of special instructions received from the U. S. Surveyor General for Asst. Supervisor of Survey for Alaska bearing date of the 18 day of May, 1919, I have well, faithfully, and truly in my own proper person, and in strict conformity with said instructions, the Manual of Surveying Instructions, and the laws of the United States, surveyed all those parts or portions of Fractional Township 29 South Range 58 East.

River of the Copper Meridian, in the State of Alaska, which are represented in the foregoing field notes as having been executed by me, and under my direction; and that all the corners of said survey have been established and perpetuated in strict accordance with the Manual of Surveying Instructions, ~~and the special written instructions of the U. S. Surveyor General for~~ and in the specific manner described in the field notes, and that the foregoing are the original field notes of such survey.

E. C. Guerin  
U. S. Surveyor.

APPROVAL.

OFFICE OF THE UNITED STATES SURVEYOR GENERAL,

Juneau, Alaska, April 23, 1920, 191

The foregoing field notes of the survey of the subdivision and meander lines of Fractional Township No. 29 South, Range No. 58 East of the Copper River Meridian

executed by E. C. Guerin, U. S. Surveyor

under his special instructions dated May 18, 1919, having been critically examined, and the necessary corrections and explanations made, the said field notes, and the surveys they describe, are hereby approved.

A. J. Sommers  
U. S. Surveyor General.

I certify that the foregoing transcript of the field notes of the above-described surveys in \_\_\_\_\_, has been correctly copied from the original notes on file in this office.

U. S. Surveyor General.

FIELD NOTES

OF

THE DEPENDENT RESURVEY

OF A PORTION OF THE

WEST BOUNDARY OF T. 29 S., R. 58 E.

AND

A PORTION OF THE

SOUTH BOUNDARY OF T. 29 S., R. 58 E.

AND

THE SUBDIVISION OF A PORTION OF

SECTION 31, T. 29 S., R. 58 E.

Of the COPPER RIVER Meridian,

In the State of ALASKA

EXECUTED BY

HOBART B. HYATT, SUPERVISORY CADASTRAL SURVEYOR

Under special instructions dated September 21, 19 67, which provided for the surveys

included under Group Number 192, approved September 22, 1967,

and assignment instructions dated September 25, 19 67.

Survey commenced September 30, 19 67

Survey completed October 6, 19 67

Fractional Sec. 31, T. 29 S., R. 58 E.

CHAINS

This survey, commenced September 30, 1967, was executed in accordance with the Manual of Surveying Instructions, 1947, and the Special Instructions dated September 21, 1967.

Brass capped iron posts, 28 inches long and 2½ inches diameter, without a concrete core, were used in monumentation of this survey except for one brass tablet monument.

Bearings were obtained from solar observations and carried to all parts of the survey.

The geodetic position of the corner of Townships 29 and 30 South, Ranges 57 and 58 East is recorded in the official record as Latitude 59° 18' 25" North and Longitude 135° 43' 26" West.

Magnetic declination is 30° East.

DEPENDENT RESURVEY  
OF A PORTION OF THE WEST BOUNDARY OF  
T. 29 S., R. 58 E.

REESTABLISHMENT OF THE SURVEY EXECUTED BY  
E. C. GUERIN, U.S. SURVEYOR, IN 1919.

From the cor. of Tps. 29 and 30 S., Rs. 57 and 58 E. monumented with an iron post, 3 ins. diam., firmly set extending 4 ins. above ground, mkd. as described in the official record.

from which new bearing trees,

An alder, 10 ins. diam., bears N. 70° E., 10 lks. dist., mkd. T29S R58E S31 BT.

An alder, 4 ins. diam., bears S. 79° E., 11 lks. dist., mkd. X BT.

An alder, 6 ins. diam., bears S. 39° W., 27 lks. dist., mkd. T. 30 S., R57E S1 BT.

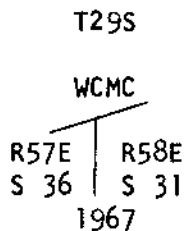
An alder, 6 ins. diam., bears N. 89° W., 14 lks. dist., mkd. T29S R57E S36 BT.

N. 0° 03' W., bet. secs. 31 and 36.

Over level land, through dense alder, willow and berry brush undergrowth and scattered cottonwood timber.

17.12 Point selected for witness corner to meander corner of secs. 31 and 36.

Set an iron post, 28 ins. long, 2½ ins. diam., 24 ins. in the ground, with brass cap mkd.



from which,

## Fractional Sec. 31, T. 29 S., R. 58 E.

CHAINS

An alder, 6 ins. diam., bears S. 74° E., 53 lks. dist., mkd. X BT.

An alder, 6 ins. diam., bears S. 78° W., 16 lks. dist., mkd. X BT.

- 17.42 Top of right bank of an old slough.
- 17.72 Record distance for meander cor. of secs. 31 and 36, falls in an old slough bed; no evidence of the corner.
- 18.30 Present right bank of slough; bank 3 ft. high, slough course E.
- 21.54 Record point for meander corner on the present left bank of slough and mouth of a creek, 5 lks. wide, 6 ins. deep, course from N. 30° W.

NORTH, bet. secs. 31 and 36 beginning new measurement.

Over level land through sparse spruce and cottonwood timber and dense undergrowth.

- 1.43 Witness meander corner to meander corner of secs. 31 and 36 monumented with an iron post, 1 in. diam., firmly set extending 6 ins. above ground, mkd. and witnessed as described in the official record.

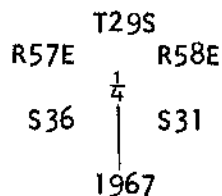
from which,

SE. cor. frame cabin, 20 ft. square, one side extends N. 10° W., bears N. 19° 15' E., 10.65 chs. dist.

- 6.40 W. bank of a creek, 20 lks. wide, 6 ins. deep, course SE. from NE. on bend.
- 7.61 Center of Haines Highway, macadam surfaced, bears S. 85° E. and N. 85° W.
- 8.40 Creek, 20 lks. wide, 6 ins. deep, course S. through a culvert from NW.
- 10.10 Ascend 150 ft. over rocky SW. slope through spruce, birch, pine, aspen and cottonwood timber; dense alder and berry brush undergrowth.
- 18.16 The  $\frac{1}{4}$  sec. cor. of secs. 31 and 36 monumented with a granite stone, 24 ins. square, faintly marked and in a mound of stone.

At the corner point.

Set an iron post, 28 ins. long, 2 $\frac{1}{2}$  ins. diam., 22 ins. in the ground and rebuilt the mound of stone, 3 ft. base, to top with brass cap mkd.



from which,

A pine, 8 ins. diam., bears S. 66° E., 34 lks.

Fractional Sec. 31, T. 29 S., R. 58 E.

CHAINS

dist., mkd. 1/4 S31 BT.

A pine, 10 ins. diam., bears N. 80° W., 35 lks.  
dist., mkd. 1/4 S36 BT.

Set the original stone, inverted and alongside the post  
and raised a mound of stone, 3 ft. base, 2 ft. high, W.  
of cor., 4 ft. dist.

Land: 32 chs., level; 8 chs. mountainous.

Soil: sandy loam and rocky.

Timber: cottonwood, spruce, and birch; undergrowth:  
alder, willow, berry brush.

DEPENDENT RESURVEY  
OF A PORTION OF THE SOUTH BOUNDARY OF  
T. 29 S., R. 58 E.

REESTABLISHMENT OF THE SURVEY EXECUTED BY  
E. C. GUERIN, U.S. SURVEYOR, IN 1919.

From the cor. of Tps. 29 and 30 S., Rs. 57 and 58 E.,  
hereinbefore described.

S. 89° 37' E., along S. bdy. of Tp., bet. secs. 31 and  
6.

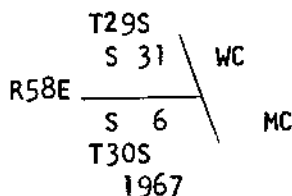
Over level land, through dense alder, willow and berry  
brush undergrowth.

3.40 Leave dense brush, enter marsh, bears N. and S.

13.10 Leave marsh, enter dense brush, bears N. and S.

21.62 Point selected for witness corner to meander corner of  
secs. 6 and 31.

Set an iron post, 28 ins. long, 2 1/2 ins. diam., 24 ins.  
in the ground, with brass cap mkd.



from which,

An alder, 6 ins. diam., bears S. 11° W., 51 lks.  
dist., mkd. T30S R58E WMC S6 BT.

An alder, 4 ins. diam., bears N. 31° W., 47 lks.  
dist., mkd. X BT.

E. Cor. of the remains of a concrete house founda-  
tion, 10 x 14 ft., long side extends SW., bears  
N. 42° 53' W., 11.40 Chs. dist.

21.80 Present right bank of slough, bank 6 ft. high, slough  
course SE.

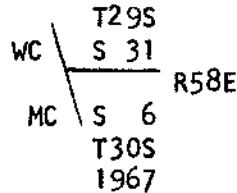
22.02 Record point for meander cor. of secs. 6 and 31, falls in  
slough, no evidence of the original monument.

Fractional Sec. 31, T. 29 S., R. 58 E.

CHAINS

- 24.00 True point for meander cor. of sec. 31 on present left bank of slough and W. edge of Haines Highway.
- 24.12 Record point for meander cor. of sec. 6, falls in fill of highway.
- 24.40 Center line of Haines Highway, bears N. 45° W. and S. 40° E. on curve.
- 24.74 Point for witness meander cor. on E. edge of highway; no remaining evidence of the monument due to blasting of the cliff for widening of the highway.
- 24.90 Point selected for witness corner to meander corner of sec. 6 and to meander corner of sec. 31.

Set a brass tablet, 2½ ins. diam., with ¼ in. stem, on a narrow rock ledge, 2 ft. above the surface of the highway near the vertical base of the cliff, with brass cap mkd.



from which,

Chiseled X B0 on side of vertical cliff, bears S. 76° E., 18 lks. dist.

Raise a mound of stone, 4 ft. base, 2 ft. high, W. of cor. against base of cliff.

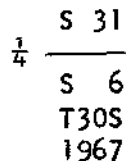
Ascend vertical 40 ft. rock cliff thence ascend steep rocky cliffs through timber and undergrowth.

- 36.37 The ¼ sec. cor. of secs. 6 and 31, monumented with a granite stone, faintly marked.

At the corner point

Set an iron post, 28 ins. long, 2½ ins. diam., 24 ins. in the ground, with brass cap mkd.

T29S R58E



from which,

A pine, 8 ins. diam., bears N. 22° E., 17 lks. dist., mkd. ¼ S31 BT.

A pine, 8 ins. diam., bears S. 25° E., 35 lks. dist., mkd. ¼ S 6 BT.

Set the original stone, inverted and alongside the post and rebuilt the original mound of stone, 3 ft. base, 2 ft. high, N. of cor., 3 ft. dist.

Land: W. of slough, level; E. of slough, rough and mountainous.

Fractional Sec. 31, T. 29 S., R. 58 E.

CHAINS	<p>Soil: W. of slough, sandy loam; E. of slough, rock covered with vegetation and mold.</p> <p>Timber: spruce, pine, birch, aspen and cottonwood; alder, willow and berry brush undergrowth.</p>
<p>SUBDIVISION OF A PORTION OF SEC. 31, T. 29 S., R. 58 E.</p>	
	<p>From the <math>\frac{1}{4}</math> sec. cor. of secs. 6 and 31, on the S. bdy. of T. 29 S., R. 58 E., hereinbefore described.</p> <p>N. <math>0^{\circ} 07'</math> W., on N. - S. center line, sec. 31.</p> <p>Over level rocky area through timber.</p>
1.55	<p>Base of rocky slide area, ascend over SW. rocky mountain slopes through dense spruce, pine, birch, aspen and cottonwood timber and alder and willow undergrowth.</p>
39.94	<p>Point for Center <math>\frac{1}{4}</math> sec. cor. of sec. 31 at the intersection of E. - W. center line.</p> <p>Land: mountainous SW. slope.</p> <p>Soil: rock covered with vegetation and mold.</p> <p>Timber: spruce, birch, pine, aspen with alder and berry brush undergrowth.</p>
<p>From the <math>\frac{1}{4}</math> sec. cor. of secs. 31 and 36, on the W. bdy. of T. 29 S., R. 58 E., hereinbefore described.</p>	
<p>EAST, on E. - W. center line, sec. 31.</p>	
<p>Over hilly S. slopes through dense spruce, pine, birch, aspen and cottonwood timber with alder and willow undergrowth.</p>	
2.50	<p>Creek, 2 lks. wide, 4 ins. deep, course S. <math>20^{\circ}</math> W.</p>
7.70	<p>Creek, 3 lks. wide, 4 ins. deep, course S.</p>
9.20	<p>Creek, 3 lks. wide, 4 ins. deep, course S. <math>20^{\circ}</math> W.</p>
12.50	<p>Base of rock slide area; ascend SW. rocky mountain slopes through timber and undergrowth.</p>
36.00	<p>Base of 10 ft. vertical rock cliff; ascend 15 ft. to cor.</p>
36.28	<p>Intersect N. - S. center line at point for Center <math>\frac{1}{4}</math> sec. cor. of sec. 31.</p> <p>Set an iron post., 28 ins. long, <math>2\frac{1}{2}</math> ins. diam., 20 ins. in the ground to base rock and in a mound of stone, 3 ft. base, to top, with brass cap mkd.</p> <p style="text-align: center;">T29S R58E</p> <p style="text-align: center;"><math>C\frac{1}{4} + S31</math></p> <p style="text-align: center;">1967</p> <p>from which,</p>

## Fractional Sec. 31, T. 29 S., R. 58 E.

CHAINS

A pine, 8 ins. diam., bears N. 3° E., 14 lks. dist., mkd. C $\frac{1}{4}$  S31 BT.

A pine, 12 ins. diam., bears S. 32° E., 56 lks. dist., mkd. C $\frac{1}{4}$  S31 BT.

Land: mountainous S. and SW. slopes.

Soil: rock covered with vegetation and mold.

Timber: spruce, birch, pine, aspen with alder and berry brush undergrowth.

MEANDERS OF THE  
LEFT BANK OF SLOUGH THROUGH SEC. 31

From the true point for meander cor. of sec. 31 at base of highway fill on the left bank of the slough, at a point from which witness meander cor. of secs. 6 and 31 bears S. 89° 37' E., 0.90 chs. dist.

N. 47° 00' W., 4.40 chs. Along base of a fill, bank 8 ft. high.

Thence along sand and gravel banks ranging from 5 to 4 ft. high.

S. 85° 00' W., 3.90 chs.

N. 55° 00' W., 4.50 chs., banks 2 ft. high through dense alders on top of bank.

N. 20° 00' W., 2.50 chs.

N. 10° 00' W., 1.50 chs.

N. 9° 00' E., 5.00 chs. At end of course, base of rock bank 8 ft. high.

Thence along rock bank 8 to 10 ft. high.

N. 12° 00' W., 4.60 chs.

N. 20° 00' W., 5.00 chs. Along rock bank 10 to 12 ft. high.

N. 37° 00' W., 2.30 chs. At end of course, leave bank.

Thence along sand and gravel banks 5 ft. high; dense undergrowth on banks.

S. 64° 00' W., 6.00 chs.

S. 78° 15' W., 3.50 chs. At end of course, mouth of creek and left bank of slough, true point for meander cor. bet. secs. 31 and 36.

Land: nearly level

Soil: sandy loam and rock at base of cuts.

Timber: cottonwood, spruce, pine; with alder, willow and berry brush undergrowth.



Fractional Sec. 31, T. 29 S., R. 58 E.

CHAINS

TRAVERSE OF THE APPROXIMATE CENTER  
LINE OF HAINES HIGHWAY  
THROUGH SECTION 31

Begin at point of intersection of the center line of the Haines Highway and the south boundary of sec. 31, at a point from which witness meander cor. of secs. 6 and 31 bears S. 89° 37' E., 0.50 chs. dist.

N. 45° 00' W., 13.70 chs.

N. 14° 50' W., 14.50 chs.

N. 52° 30' W., 8.60 chs.

N. 85° 00' W., 4.20 chs. At end of course intersect west boundary of sec. 31, on the center line of the Haines Highway at a point from which witness meander cor. of secs. 31 and 36 on the N. side of the slough bears SOUTH, 6.18 chs. dist.

GENERAL DESCRIPTION

The southwestern portion of Section 31, Township 29 South, Range 58 East was subdivided to accommodate settlement in the area. Lot 1 was surveyed in 1919 consisting of level, river bottom land, most of which is covered with a dense growth of alder, willow and scattered cottonwood. There are no improvements in Lot 1.

Lot 2 is located on the mountainous southwest slope covered with dense growth of spruce, hemlock, birch and cottonwood timber with alder, willow, and berry brush undergrowth.

The soil in Lot 2 is black sandy loam and vegetation mold over gravel and solid rock.

The macadam surfaced Haines Highway runs northwesterly through Lot 2. The left bank of a slough, course southeasterly, forms the southwest limits of Lot 2. The concrete foundation of an old cabin is located on the left bank of the slough. A cabin is located on the south slope in the western portion of Lot 2.



CERTIFICATE OF SURVEY

I, Hobart B. Hyatt, HEREBY CERTIFY upon honor that, in pursuance of special instructions bearing date of the 21 day of September, 1967, I have executed a dependent resurvey of a portion of the West Boundary of T. 29 S., R. 58 E. and of a portion of the South Boundary of T. 29 S., R. 58 E. and subdivided a portion of Section 31, T. 29 S., R. 58 E.

of the Copper River Meridian, in the State of Alaska, which are represented in the foregoing field notes as having been executed by me and under my direction; and that said survey has been made in strict conformity with said special instructions, the Manual of Instructions for the Survey of the Public Lands of the United States, and in specific manner described in the foregoing field notes.

May 8, 1968 (Date) Hobart B. Hyatt (Cadastral Surveyor) Supervisory Cadastral Surveyor

CERTIFICATE OF APPROVAL

SUBMITTED FOR APPROVAL Date SEP 3 1969

BUREAU OF LAND MANAGEMENT, Washington, D. C.

The foregoing field notes of the executed a dependent resurvey of a portion of the West Boundary of T. 29 S., R. 58 E. and of a portion of the South Boundary of T. 29 S., R. 58 E. and subdivided a portion of Section 31, T. 29 S., R. 58 E.

executed by Hobart B. Hyatt, Supervisory Cadastral Surveyor having been critically examined and found correct, are hereby approved.

MAR 24 1970 (Date) Clark F. Lamm (Chief, Division of Engineering) Chief, Division of Cadastral Survey

CERTIFICATE OF TRANSCRIPT

I CERTIFY That the foregoing transcript of the field notes of the above-described surveys in is a true copy of the original field notes.

(Date) (Chief, Division of Engineering)

R-285

# ORIGINAL

126

UNITED STATES  
DEPARTMENT OF THE INTERIOR  
BUREAU OF LAND MANAGEMENT

FIELD NOTES

OF THE

DEPENDENT RESURVEY

OF

LOT 2, SECTION 31

AND

THE INFORMATIONAL TRAVERSE OF THE RIGHT-OF-WAY

CENTERLINE OF THE HAINES HIGHWAY

THROUGH LOT 2, SECTION 31

WITHIN TOWNSHIP 29 SOUTH, RANGE 58 EAST

OF THE COPPER RIVER MERIDIAN

IN THE STATE OF ALASKA

EXECUTED BY

John D. Taivalkoski, Cadastral Surveyor

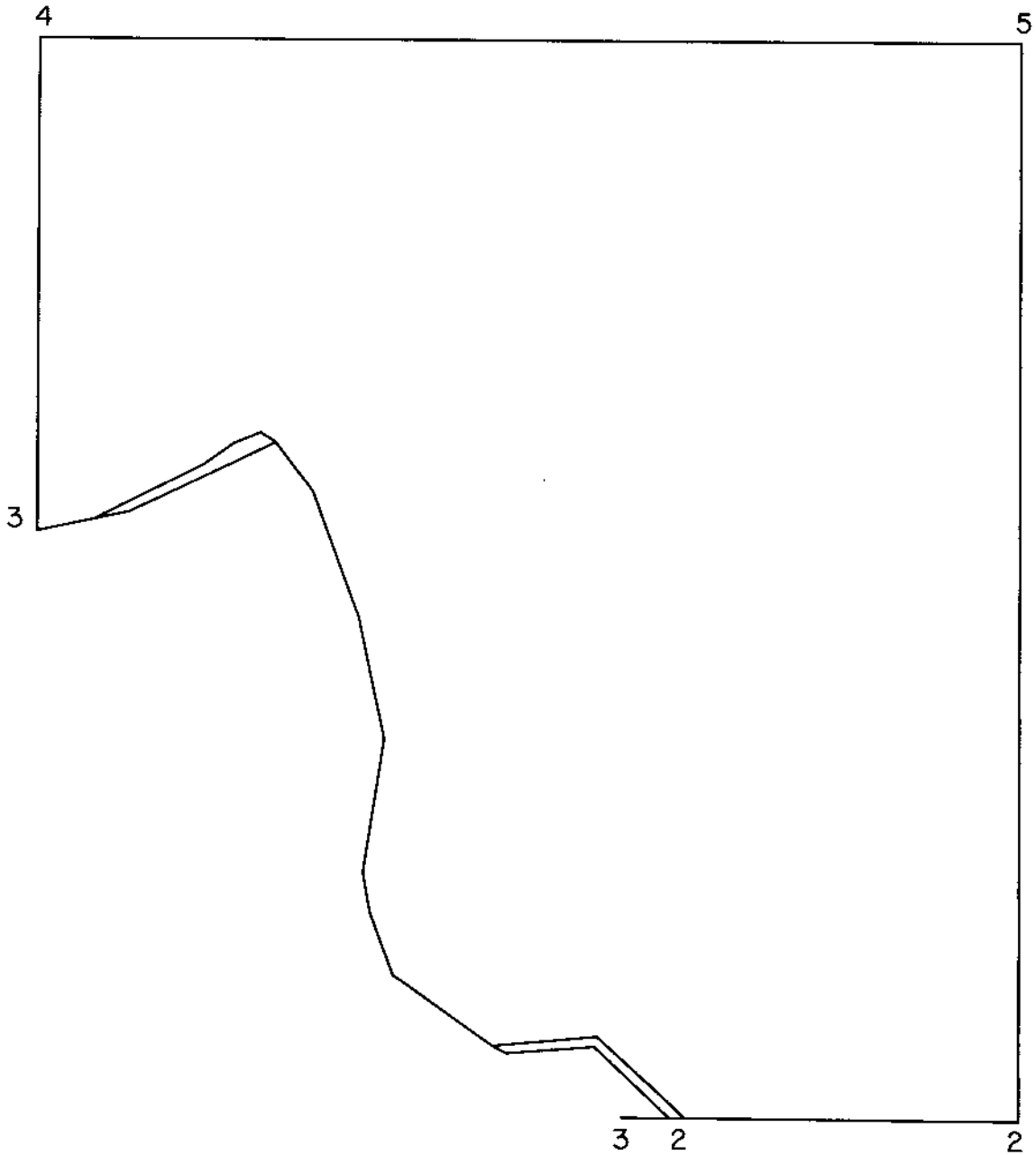
Under Supplemental Special Instructions dated, June 28, 2007, approved July 2, 2007, which provided for the surveys included under Group No. 192, Alaska, and assignment instructions dated July 9, 2007.

Survey commenced: August 4, 2007

Survey completed: August 14, 2007

# INDEX DIAGRAM

TOWNSHIP 29 SOUTH, RANGE 58 EAST, COPPER RIVER MERIDIAN  
LOT 2, SECTION 31



Meanders . . . . . pgs. 5-6  
Informational Traverse of the Haines Highway . . . . . pgs. 6-8

Township 29 South, Range 58 East,  
Copper River Meridian, Alaska

128

<p><b>Chains</b></p>	<p>The following field notes represent the dependent resurvey of Lot 2, and the informational traverse of the right-of-way centerline of the Haines Highway through Lot 2, Section 31, Township 29 South, Range 58 East, Copper River Meridian, Alaska.</p> <p>The north boundary of Township 30 South, Range 58 East and the south and west boundaries and a portion of the meander lines of Township 29 South, Range 58 East, were surveyed by E.C. Guerin, U.S. Surveyor, in 1919.</p> <p>The dependent resurvey of a portion of the south and west boundaries of Township 29 South, Range 58 East, Copper Meridian and the subdivision of a portion of Section 31, Township 29 South, Range 58 East, was surveyed by Hobart B. Hyatt, Supervisory Cadastral Surveyor, in 1967.</p> <p>The Haines Highway project centerline was surveyed by the Alaska Department of Transportation and Public Facilities (ADOT&amp;PF), in 1978.</p> <p>This survey was executed using conventional survey methods and using the Global Positioning System (G.P.S.), utilizing static relative positioning techniques.</p> <p>All surveyed lines are mean bearings.</p> <p>All distances are horizontal distances reduced to their sea level equivalent.</p> <p>This survey was executed in accordance with the specifications set forth in the <u>Manual of Surveying Instructions, 1973</u>, and Supplemental Special Instructions dated June 28, 2007.</p> <p>The azimuth was determined from a control network using the Global Positioning System (G.P.S.), utilizing static relative positioning techniques, and refers to the true meridian.</p> <p>Preliminary to the resurvey, the original lines of Lot 2 were retraced and a diligent search was made for all evidence of the original corners and other calls of record. The retracement data were thoroughly verified and only the true line field notes are given herein.</p> <p>The geographic position of the witness corner to the most northerly meander corner of Sections 31 and 36, on the left bank of a slough of the Chilkat River, and on the west boundary of the township, as determined using the Global Positioning System (G.P.S.) static processing, utilizing the National Geodetic Survey Online Positioning Users Service (O.P.U.S.), is:</p> <p>Latitude: 59° 18' 45.38" N., Longitude: 135° 43' 28.27" W. NAD 83 (CORS 96) (EPOCH 2003)</p> <p>Latitude: 59° 18' 46.56" N., Longitude: 135° 43' 21.66" W. NAD 27 (NADCON)</p>
----------------------	--

Township 29 South, Range 58 East,  
Copper River Meridian, Alaska

<p>Chains</p>	<p>The mean magnetic declination was determined from the U.S. Department of Defense World Magnetic Model 2005 and indicates a value of 22 3/4° East.</p> <hr/> <p>Dependent Resurvey of Lot 2, Section 31, Township 29 South, Range 58 East, Copper River Meridian, Alaska</p> <hr/> <p>Restoring a portion of the 1967 survey by Hobart B. Hyatt</p> <hr/> <p>Beginning at the 1/4 sec. cor. of secs. 6 and 31, on the S. bdy. of the Tp., monumented with an iron post, 2 1/2 ins. diam., firmly set, projecting 8 ins. above the ground, with brass cap mkd. T29S R58E S31 1/4 S6 T30S 1967, from which the bearing trees taken by Hyatt in 1967</p> <p style="padding-left: 40px;">A pine, 11 ins. diam., bears N. 22° E., 17 lks. dist., with scribe marks 1/4S31BT visible on partially healed blaze.</p> <p style="padding-left: 40px;">A pine, 12 ins. diam., bears S. 25° E., 35 lks. dist., with scribe marks 1/4S6BT visible on partially healed blaze.</p> <p>The remains of the original mound of stone, 5 lks. N of cor.</p> <p>Rebuild the mound of stone to now measure 3 ft. diam, 2 ft. high.</p> <p>N. 89° 31' W., bet. secs. 6 and 31, on the S. bdy. of the Tp.</p> <p>11.48 The witness cor. to the easternmost meander cor. of secs. 6 and 31, on the left bank of a slough of the Chilkat River, monumented with a brass tablet, 2 1/2 ins. diam., with 1/4 in. stem, loosely set on crumbling cliff ledge, 2 ft. above the surface of the Haines Highway near the vertical base of a cliff, mkd. T29S WCMC S31 S6 R58E T30S 1967, from which the original bearing object taken by Hyatt in 1967</p> <p style="padding-left: 40px;">A chiseled X BO, on SW face of a vertical rock cliff, size indeterminable, bears S. 76° E., 18 lks. dist.</p> <p>No evidence of the original mound of stone remaining.</p> <p>At the corner point</p> <p>Re-drill hole in rock ledge and set original brass tablet in concrete.</p> <hr/>
---------------	---

Dependent Resurvey of Lot 2, Section 31,  
Township 29 South, Range 58 East, Copper River Meridian, Alaska

Chains	
	N. 89° 33' W., between secs. 6 and 31, on the S. bdy. of the Tp., beginning new measurement.
0.63	Centerline of Haines Highway on a curve, asphalt-surfaced, bears S. 40° E. and N. 40° W., not monumented.
0.88	True point for the 1967 easterly meander cor. of secs. 6 and 31, located in 1967 on the left bank of a slough of the Chilkat River, at single proportionate measure; falls on shoulder of Haines Highway where widening of the roadway has caused manmade accretion, not monumented. This point no longer functions as a meander cor.
1.46	True point for present day easterly meander cor. of secs. 6 and 31, on the left bank of a slough of the Chilkat River, at the line of ordinary high water, not monumented due to liability of destruction by ice and water action.
3.03	True point for the 1967 westerly meander cor. of secs. 6 and 31, located in 1967 on the right bank of a slough of the Chilkat River, at the line of ordinary high water; falls in water, not monumented.
3.21	<p>The witness cor. to the westerly meander cor. of secs. 6 and 31, on the right bank of a slough of the Chilkat River, determined from the remains of a bearing tree taken by Hyatt in 1967</p> <p style="padding-left: 40px;">An alder stump, 8 ins. diam., bears S. 11° W., 51 lks. dist., no marks visible.</p> <p>Witness cor. falls in water, not monumented.</p>
1.43	<p>From the true point for the northerly meander cor. of secs. 31 and 36, on the W. bdy. of the Tp., on the left bank of a slough of the Chilkat River, at the line of ordinary high water.</p> <p>N. 0° 05' E., bet. secs. 31 and 36, on the W. bdy. of the Tp.</p> <p>The witness cor. to the northernmost meander cor. of secs. 31 and 36, on the left bank of a slough of the Chilkat River, monumented with an iron post, 1 in. diam., firmly set, projecting 8 ins. above the ground, incorrectly mkd. T29S R57 R58 S36 S31 WCMC 1919, from which the original bearing trees taken by Guerin in 1919</p> <p style="padding-left: 40px;">A cottonwood, 24 ins. diam., bears N. 22 3/4° E., 183 lks. dist., with a healed blaze.</p> <p style="padding-left: 40px;">A cottonwood, 31 ins. diam., bears N. 87 1/2° W., 201 lks. dist., with a healed blaze.</p>



Dependent Resurvey of Lot 2, Section 31,  
Township 29 South, Range 58 East, Copper River Meridian, Alaska

Chains			
	<p>From the witness cor., the southwesterly cor. of a trailer home, 56 x 24 ft., bears N. 30° 09' E., 8.32 chs. dist., long side bears N. 82° 43' E.</p> <p>Also from the witness cor., the southerly cor. of a woodshed, 14 x 14 ft., bears N. 38° 17' E., 8.63 chs. dist., side bears N. 37° 49' E.</p>		
7.62	Centerline of Haines Highway, asphalt-surfaced, bears E. and W., not monumented.		
8.19	Creek, 23 lks. wide, 12 ins. deep, course S. 34° E.		
18.17	<p>The 1/4 sec. cor. of secs. 31 and 36, on the W. bdy. of the Tp., monumented with a mound of stone, 2 ft. diam, 1 ft. high, from which the bearing trees taken by Hyatt in 1967</p> <p style="padding-left: 40px;">A pine, 10 ins. diam., bears S. 62 3/4° E., 34 lks. dist., with a healed blaze. (Record: S. 66° E.)</p> <p style="padding-left: 40px;">A pine, 12 ins. diam., bears N. 84° W., 35 lks. dist., with fragmentary scribe marks visible on a partially healed blaze. (Record: N. 80° W.)</p> <p>The original mound of stone, 3 ft. base, 1 1/2 ft. high, 5 lks. W of cor.</p> <p>There is no evidence of the iron post set by Hyatt in 1967.</p> <p>At the corner point</p> <p>Set a stainless steel post, 28 ins. long, 2 1/2 ins. diam., 20 ins. in the ground, encircled in a mound of stone, 3 ft. base, to top of brass cap mkd.</p> <div style="text-align: center; margin: 20px 0;"> <p>T29S R57E R58E</p> <table style="margin: auto; border-collapse: collapse;"> <tr> <td style="padding: 0 10px;">S36</td> <td style="border-left: 1px solid black; border-right: 1px solid black; padding: 0 5px;">S31</td> </tr> </table> <p>1/4 2007</p> </div> <p>Deposit a magnet in a white plastic case at the base of the stainless steel post.</p> <hr/> <p>From the 1/4 sec. cor. of secs. 6 and 31, on the S. bdy. of the Tp., hereinbefore described.</p> <p>N. 0° 05' W., on the N - S centerline of sec. 31.</p>	S36	S31
S36	S31		

Dependent Resurvey of Lot 2, Section 31,  
Township 29 South, Range 58 East, Copper River Meridian, Alaska

Chains 39.94	<p>The center 1/4 sec. cor. of sec. 31, monumented with an iron post, 2 1/2 ins. diam., firmly set, in a mound of stone 3 ft. base to top of brass cap mkd. T29S R58E C1/4 S31 1967, from which the original bearing trees taken by Hyatt in 1967</p> <p style="padding-left: 40px;">A pine, 9 ins. diam., bears N. 3° E., 14 lks. dist., with fragmentary scribe marks visible on a partially healed blaze.</p> <p style="padding-left: 40px;">A pine, 15 ins. diam., bears S. 32° E., 56 lks. dist., with a healed blaze.</p>
	N. 89° 56' W., on the E - W centerline of sec. 31.
28.37	Creek, 5 lks. wide, 6 ins. deep, course S. 35° W.
32.75	Creek, 5 lks. wide, 12 ins. deep, course S. 10° W.
36.28	The 1/4 sec. cor. of secs. 31 and 36, on the W. bdy. of the Tp., hereinbefore described.
<p>Meanders of Lot 2, Section 31 Township 29 South, Range 58 East, Copper River Meridian, Alaska</p>	
<p>From the present day meander cor. of secs. 6 and 31, on the S. bdy. of the Tp., on the left bank of a slough of the Chilkat River, at the line of ordinary high water, hereinbefore described.</p> <p>Thence upstream, along accreted land adjoining Lot 2, sec. 31, on the left bank of a slough of the Chilkat River, along a well-defined bank, at the line of ordinary high water.</p>	
	<p>N. 46° 07' W., 3.79 chs. S. 85° 42' W., 3.30 chs. N. 61° 12' W., 0.58 chs.,</p>
	<p>At end of course, leave accreted lands adjoining Lot 2, sec. 31; intersect adjusted 1967 record meanders, thence with the adjusted record meanders, at the line of ordinary high water.</p>
	<p>N. 55° 00' W., 4.50 chs. N. 20° 01' W., 2.50 chs. N. 10° 02' W., 1.50 chs. N. 8° 58' E., 5.00 chs. N. 12° 02' W., 4.60 chs. N. 20° 01' W., 5.00 chs. N. 37° 01' W., 2.30 chs.,</p>
	<p>At end of course, leave adjusted 1967 record meanders; thence with the present day meanders</p>

Meanders of Lot 2, Section 31  
Township 29 South, Range 58 East, Copper River Meridian, Alaska

Chains	
	adjoining eroded land, at the line of ordinary high water.
N. 58° 07' W., 0.66 chs.	
S. 68° 28' W., 1.06 chs.	
S. 54° 49' W., 1.40 chs.	
S. 63° 00' W., 4.53 chs.,	At end of course, leave eroded land; intersect adjusted 1967 record meanders; thence along adjusted 1967 record meanders, at the line of ordinary high water.
S. 78° 17' W., 2.15 chs.,	At the end of course, the northernmost meander cor. of secs. 31 and 36, on the W. bdy. of the Tp., hereinbefore described.
From the true point for the 1967 easterly meander cor. of secs. 6 and 31, on the S. bdy. of the Tp., on the left bank of a slough of the Chilkat River, at the line of ordinary high water, hereinbefore described.	
Thence upstream with the adjusted 1967 record meanders of Parcel A, Lot 2, Section 31.	
N. 47° 00' W., 4.40 chs.	
S. 85° 01' W., 3.90 chs.,	At end of course, intersect the present day meanders, hereinbefore described.
From the intersection of the adjusted 1967 record meander point and the present day meander point, attached to eroded land.	
Thence upstream with the adjusted 1967 record meanders of Lot 2b, Section 31.	
S. 64° 02' W., 6.00 chs.	
S. 78° 17' W., 1.35 chs.,	At end of course, intersect the present day meanders, hereinbefore described.
Informational Traverse of the Right-of-way Centerline of the Haines Highway Through Lot 2, Section 31, Township 29 South, Range 58 East, Copper River Meridian, Alaska	
From an ADOT&FP project point, identical with the center of the Haines Highway right-of-way, monumented with a brass cap, 2 1/2 ins. diam., in a concrete monument box, mkd. DEPARTMENT OF HIGHWAYS X CENTERLINE MON.	

Informational Traverse of the Right-of-way Centerline  
of the Haines Highway Through Lot 2, Section 31, Township 29  
South, Range 58 East, Copper River Meridian, Alaska

Chains	
	N. 36° 29' W., along the right-of-way centerline of the Haines Highway.
2.56	Point for PC 1, on the right-of-way centerline of the Haines Highway, not monumented.
	Thence on the arc of a circular curve to the left, having a radius of 43.42 chs., through a central angle of 9° 09', long chord bears N. 40° 52' W., 6.93 chs. dist., along the right-of-way centerline of the Haines Highway.
3.70	The intersection with the S. bdy. of the Tp., hereinbefore described.
6.935	Point for PT 1, on the right-of-way centerline of the Haines Highway, not monumented.
	N. 45° 26' W., along the right-of-way centerline of the Haines Highway.
1.16	Point for PC 2, on the right-of-way centerline of the Haines Highway, not monumented.
	Thence on the arc of a circular curve to the left, having a radius of 34.73 chs., through a central angle of 3° 10', long chord bears N. 47° 01' W., 1.92 chs. dist., along the right-of-way centerline of the Haines Highway.
1.92	Point for PT 2, on the right-of-way centerline of the Haines Highway, not monumented.
	N. 48° 36' W., along the right-of-way centerline of the Haines Highway
2.34	Point for PC 3, on the right-of-way centerline of the Haines Highway, not monumented.
	From this point, an ADOT&PF project point bears North, 3 lks. dist., monumented with a brass cap, 2 1/2 ins. diam., in a concrete monument box, mkd. DEPARTMENT OF HIGHWAYS X CENTERLINE MON.
	Thence on the arc of a circular curve to the right, having a radius of 14.47 chs., through a central angle of 34° 28', long chord bears N. 31° 22' W., 8.57 chs. dist., along the right-of-way centerline of the Haines Highway.
8.705	Point for PT 3, on the right-of-way centerline of the Haines Highway, not monumented.

Informational Traverse of the Right-of-way Centerline  
of the Haines Highway Through Lot 2, Section 31, Township 29  
South, Range 58 East, Copper River Meridian, Alaska

Chains	
	<p>From this point, an ADOT&amp;PF project point bears S. 23° 25' E., 2 lks. dist., monumented with a brass cap, 2 1/2 ins. diam., in a concrete monument box, mkd. DEPARTMENT OF HIGHWAYS X CENTERLINE MON.</p>
	<p>N. 14° 08' W., along the right-of-way centerline of the Haines Highway.</p>
6.82	<p>An ADOT&amp;PF project point, identical with the center of the Haines Highway right-of-way, monumented with a brass cap, 2 1/2 ins. diam., in a concrete monument box, mkd. DEPARTMENT OF HIGHWAYS X CENTERLINE MON.</p>
8.06	<p>Point for PC 4, on the right-of-way centerline of the Haines Highway, not monumented.</p>
	<p>Thence on the arc of a circular curve to the left, having a radius of 10.85 chs., through a central angle of 77° 04', long chord bears N. 52° 41' W., 13.52 chs. dist., along the right-of-way centerline of the Haines Highway.</p>
14.60	<p>Point for PT 4, on the right-of-way centerline of the Haines Highway, not monumented.</p>
	<p>S. 88° 47' W., along the right-of-way centerline of the Haines Highway.</p>
0.86	<p>The intersection with the W. bdy. of the Tp., hereinbefore described.</p>
1.24	<p>An ADOT&amp;PF project point, identical with the center of the Haines Highway right-of-way, monumented with a brass cap, 2 1/2 ins. diam., in a concrete monument box, mkd. DEPARTMENT OF HIGHWAYS · CENTERLINE MON.</p>
6.84	<p>An ADOT&amp;PF project point, identical with the center of the Haines Highway right-of-way, monumented with a brass cap, 2 1/2 ins. diam., in a concrete monument box, mkd. DEPARTMENT OF HIGHWAYS · CENTERLINE MON.</p>
<p>General Description</p>	
<p>Lot 2, section 31 is situated on the left bank of a slough of the Chilkat River, approximately 11 miles northwesterly of Haines, Alaska within Township 29 South, Range 58 East, Copper River Meridian, Alaska.</p>	
<p>The land lies mostly on moderate to steep southwesterly slopes forested by pine, spruce, birch, and alder. The center 1/4</p>	

Township 29 South, Range 58 East,  
Copper River Meridian, Alaska

<b>Chains</b>	
	<p>section corner of section 31 attains a height of approximately 1,300 feet above sea level. Along the southern half of Lot 2, rocky cliffs rise abruptly from the Haines Highway. Near the slough, the land is low, wet, and level vegetated with cottonwood, birch, alder, and willow.</p> <p>Access to the survey was by truck.</p>

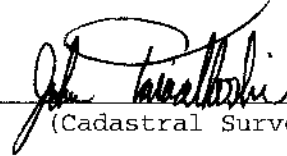


## CERTIFICATE OF SURVEY

I, John D. Taivalkoski, Cadastral Surveyor, HEREBY CERTIFY upon honor that, in pursuance of supplemental special instructions bearing date of the 28th day of June, 2007, I have dependently resurveyed Lot 2, and traversed for informational purposes, the right-of-way centerline of the Haines Highway through Lot 2, section 31, Township 29 South, Range 58 East, of the Copper River Meridian, in the State of Alaska, which are represented in the foregoing field notes as having been executed by me and under my direction; and that said survey has been made in strict conformity with said special instructions, the Manual of Instructions for the Survey of the Public Lands of the United States, and in the specific manner described in the foregoing field notes.

12/08/08

(Date)



(Cadastral Surveyor)

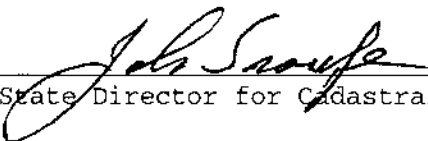
## CERTIFICATE OF APPROVAL

BUREAU OF LAND MANAGEMENT  
Anchorage, Alaska

The foregoing field notes of the dependent resurvey of Lot 2, and the traverse for informational purposes of the right-of-way centerline of the Haines Highway through Lot 2, section 31, Township 29 South, Range 58 East, Copper River Meridian, Alaska, executed by John D. Taivalkoski, Cadastral Surveyor, having been critically examined and found correct, are hereby approved.

12/23/2008

(Date)



(Deputy State Director for Cadastral Survey, Alaska)

~~CERTIFICATE OF TRANSCRIPT~~

~~I CERTIFY That the foregoing transcript of the field notes of the above described survey within Township 29 South, Range 58 East, Copper River Meridian, Alaska, is a true copy of the original field notes.~~

~~(Date)~~

~~(Deputy State Director for Cadastral Survey, Alaska)~~