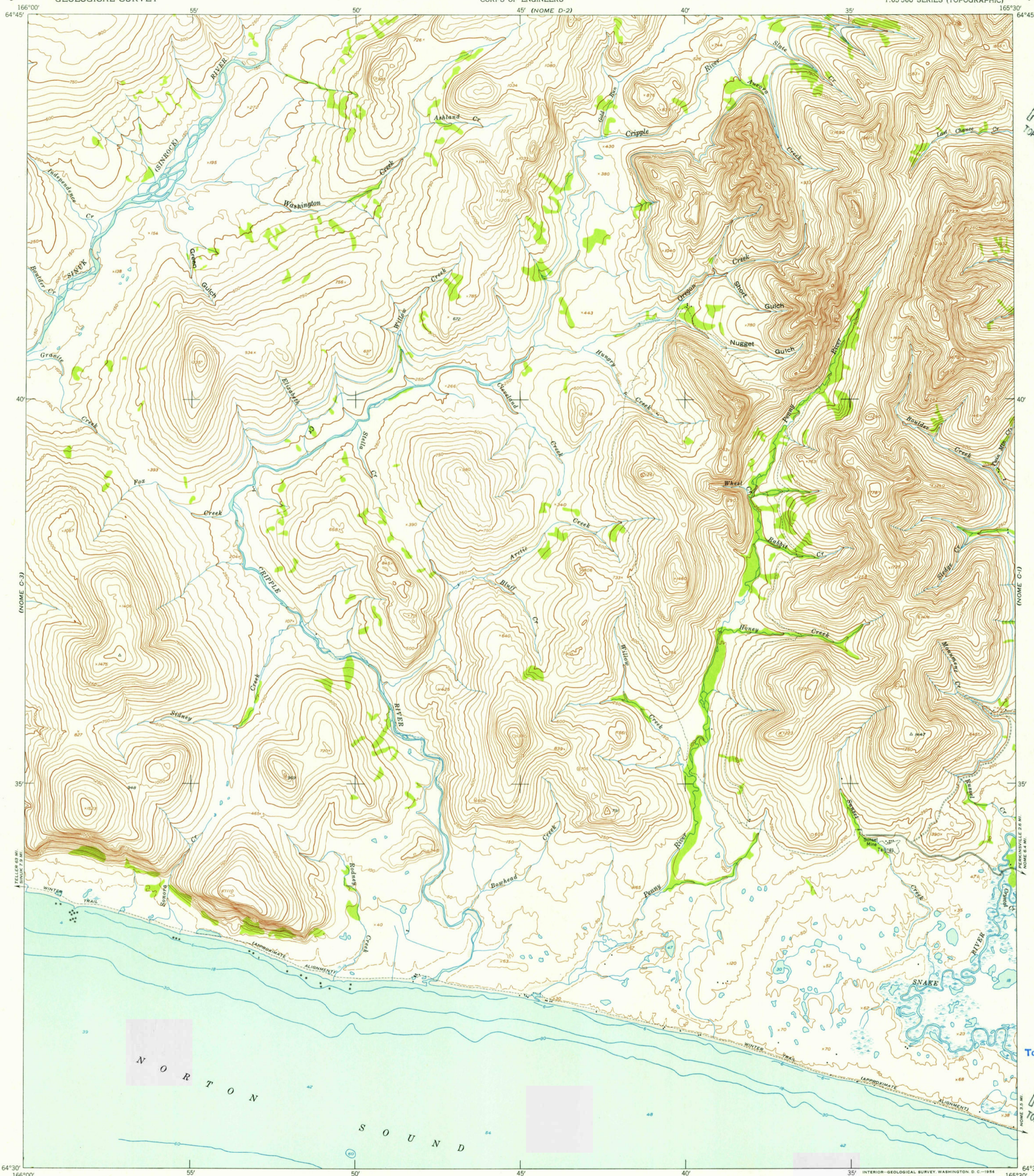


(NOME D-3)

(NOME D-1)

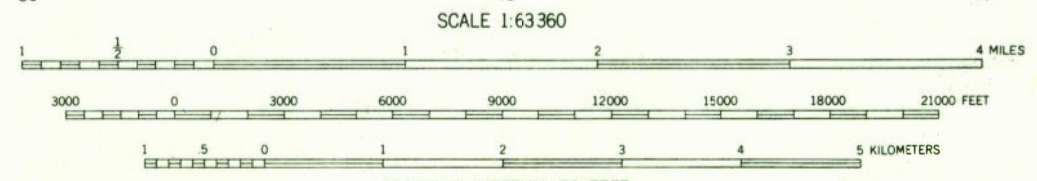
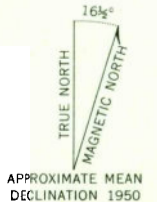


U.S.G.S.  
FILE COPY  
TOPOGRAPHIC DIVISION

USGS  
Historical File  
Topographic Division

U.S.G.S.  
FILE COPY  
TOPOGRAPHIC DIVISION

Mapped by the Army Map Service  
Published for civil use by the Geological Survey  
Control by USC&GS and USCE  
Topography from aerial photographs by photogrammetric methods  
Aerial photographs taken 1950. Map not field checked  
Coastal hydrography by USC&GS  
Universal Transverse Mercator projection, zone 3  
1927 North American datum  
Unchecked elevations are shown in brown



CONTOUR INTERVAL 50 FEET  
DASHED LINES REPRESENT HALF-INTERVAL CONTOURS  
DATUM IS MEAN SEA LEVEL  
DEPTH CURVES AND SOUNDINGS IN FEET—DATUM IS MEAN LOWER LOW WATER  
SHORELINE SHOWN REPRESENTS THE APPROXIMATE LINE OF MEAN HIGH WATER  
THE AVERAGE RANGE OF TIDE IS APPROXIMATELY 2 FEET  
FOR SALE BY U. S. GEOLOGICAL SURVEY  
FAIRBANKS, ALASKA FEDERAL CENTER, DENVER, COLORADO WASHINGTON 25, D. C.  
A FOLDER DESCRIBING TOPOGRAPHIC MAPS AND SYMBOLS IS AVAILABLE ON REQUEST



ROAD CLASSIFICATION 1953

ALL WEATHER ROADS	DRY WEATHER ROADS
Hard-surface..... None	Improved dirt.....
Other..... None	Unimproved dirt.....
Trails.....	

NOME (C-2), ALASKA  
N6430-W16530/15x30  
1950

FEB 17 1956  
2135