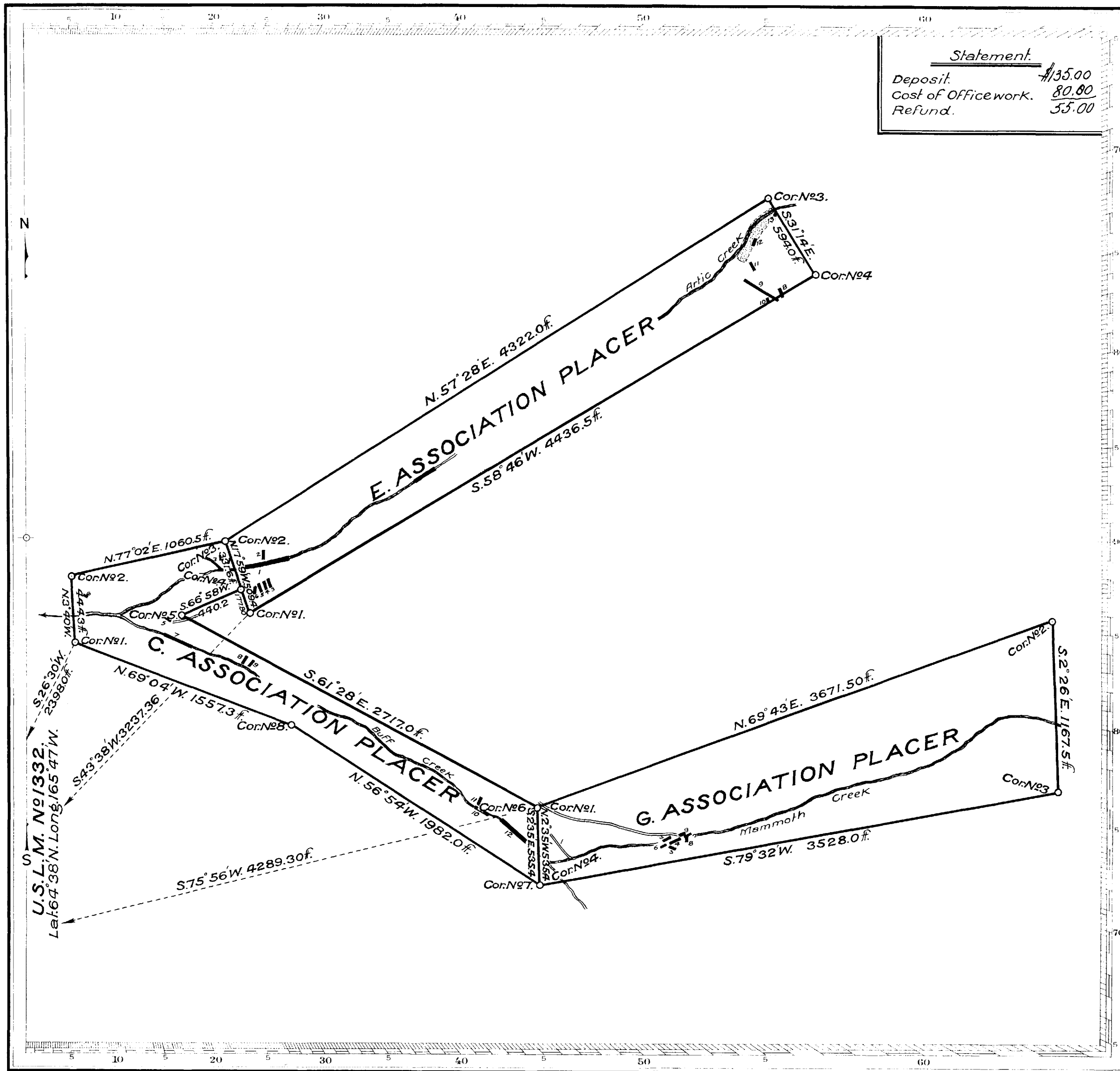


(4-675)



Statement.	
Deposit.	\$135.00
Cost of Office work.	80.80
Refund.	55.00

Claim Located December 15, 1910 to August 17, 1922.
 Amended August 17, 1922.
 Mineral Survey No. **1332.**

Lot No. _____
 N O M E _____ Land District.

PLAT

OF THE CLAIM OF
 A. L. K E E N E ,

KNOWN AS THE
 C Association, E Association and G Association
 Placer Mining Claims,

IN _____ N O M E _____ MINING DISTRICT,
 Territory of Alaska.

Containing an Area of 160.263 Acres.
 Scale of 600 Feet to the inch.

Variation 10° 45' - 20° E.

SURVEYED August 20 - 24, 1922, BY

Arthur G. Blake, U.S. Deputy Mineral Surveyor,

The Original Field Notes of the Survey of the Mining Claim of
 A. L. K E E N E ,
 known as the C Association, E Association, and
 G Association Placer Mining Claims,

from which this plat has been made under my direction, have been examined and approved, and are on file in this Office, and I hereby certify that they furnish such an accurate description of said Mining Claim as will, if incorporated into a patent, serve fully to identify the premises, and that such reference is made therein to natural objects or permanent monuments as will perpetuate and fix the locus thereof. I further certify that Five Hundred Dollars worth of labor has been expended or improvements made upon said Mining Claim by claimant or her grantors and that said improvements consist of 4 placer workings; 21 cuts; road construction and pits. Total value of improvements, \$5050.00,

that the location of said improvements is correctly shown upon this plat, and that no portion of said labor or improvements has been included in the estimate of expenditures upon any other claim. And I further certify that this is a correct plat of said Mining Claim made in conformity with said original field notes of the survey thereof, and the same is hereby approved.

U.S. Surveyor General's Office _____
 Juneau, Alaska, _____ U.S. Surveyor General for
 May 26, 1923. _____ A L A S K A .

MINERAL SURVEY No. 1332

RECEIVED
OFFICE OF SURVEYOR GENERAL,
JUNEAU, ALASKA.
OCT 23 1922
ANSWERED

Nome Land District.

FIELD NOTES

OF THE SURVEY OF THE MINING CLAIM OF

W. E. Keene

KNOWN AS THE

C Association - E Association and G Association placers, Mining Claims

Sape nome Recording Precinct and Mining District,
Territory of Alaska County

Section Township Range

Surveyed under instructions dated August 18th, 1922

by Arthur G. Blake

U. S. Mineral Surveyor.

Claim located Dec. 15-1910, Aug. 17-1922, Dec. 15-, 1910, Dec. 15-1910

Survey commenced August 20th, 1922

Survey completed August 24th, 1922

Address of claimant Nome - Alaska.

DATES OF AMENDED LOCATIONS.

C Association, Aug. 17th 1922

FIELD NOTES - MINERAL SURVEY NO. 1332

Feet

C ASSOCIATION *Chloro-Whitington*

Beginning at Cor.¹ identical with location for which I set a spruce post 4ins. sq. 4ft. long 2ft. in ground, scribed 1-C-1332 and erect earth mound 24ins. base 12ins. high around same. No stone available for corner.

U.S.L.M. Sur.^{No} 1332 bears S. 26° 30' W. 2398.0ft. ✓

No other bearings available.

THENCE N. 3° 40' W.

180.0 Arctic Creek 20ft. wide, course westerly,

444.3 To Cor.^{No} 2 identical with location, a spruce post 4ins. sq. 4ft. long set 2ft. in ground and scribed 2-C-1332 with earth mound 24ins. base 12ins. high around same.

No stone or bearing objects available.

THENCE N. 77° 02' E.

1060.5 To Cor.^{No} 3 identical with location, a spruce post 4ins. sq. 4ft. long set 2ft. in ground and scribed 3-C-1332 with earth mound 24ins. base 12ins. high around same.

No stone or bearing objects available for corner.

THENCE S. 17° 59' E.

187.0 Arctic Creek 20ft. wide, course westerly,

331.6 ✓ To Cor.^{No} 4 identical with location, a spruce post 4ins. sq. 4ft. long set 2ft. in ground, scribed 4-C-1332 with earth mound 24ins. base 12ins. high around same.

No stone or bearings available for corner.

THENCE S. 66° 58' W.

440.2 To Cor.^{No} 5 identical with location, a spruce post 4ins. sq. 4ft. long set 2ft. in ground, scribed 5-C-1332 with earth mound 24ins. base 12ins. high around same.

No stone or bearing objects available for corner.

THENCE S. 61° 28' E.

27.0 Center wagon road, course easterly,

2717.0 To Cor.^{No} 6 identical with location, a spruce post 4ins. sq. 4ft. long set 2ft. in ground, scribed 6-C-1332 with earth

FIELD NOTES - MINERAL SURVEY NO. 1332

Feet

mound 24ins. base 12ins. high around same.

No stone or bearing objects available for corner.

THENCE S. 2 35 E.

330.0 Center Buff Creek 16ft. wide, course northwesterly,

555.4 To Cor. ^{Ne}7 identical with location, a limestone 24x12x4ins. set 12ins. in ground, marked 7C-40-1332 and (x) cross on top surface for true point, with earth mound 24ins. base 16 ins. high S. side of same. No bearings available for cor.

THENCE N. 56 54 W.

1982.0 To Cor. ^{Ne}8 identical with location, a schist rock in place 24x18ins. 6ins. above surface, marked 8C-1332 and cross (x) on top surface for true point, with stone mound 30ins. base 20ins. high alongside. Cor. on schist reef 30ft. high.

No bearing objects available.

THENCE N. 69 04 W.

1557.3 To Cor. ^{Ne}1 and place of beginning.

Mag. var. 18 45 to 20 E.

E ASSOCIATION *Placer Mining Claim*Beginning at Cor. ^{Ne}1 identical with location, for which*P* I set a spruce post 4ins. sq. 4ft. long set 2ft. in ground,

scribed 1-E-1332 and erect earth mound 24ins. base 16ins. high around same. No stone available for corner.

U.S.L.M. ^{Ne} Sur. 1332 bears S. 43 38 W. 3237.36ft. ✓

No other bearings available.

THENCE N. 17 59 W.

177.8 ✓ Cor. ^{Ne}4, C Association this survey, previously described,

Along line 4-3 of same,

322.4 Center Arctic Creek, 20ft. wide, course westerly,

509.4 ✓ To Cor. ^{Ne}2 identical with location and with Cor. ^{Ne}3 of C Association this survey, previously described.

THENCE N. 57 28 E.

4322.0 To Cor. ^{Ne}3 identical with location, *P* a spruce post 4ins. sq.

4ft. long set 2ft. in ground, scribed 3E-1332 with earth mound 24ins. base 16ins. high around same.

FIELD NOTES - MINERAL SURVEY NO. 1332

Feet

No stone or bearing objects available for corner.

THENCE S. 31° 14' E.

79.0 Center Arctic Creek 16ft. wide, course westerly,
 594.0 To Cor. 4 ^{No} identical with location, ^P a spruce post 4ins. sq. 4ft.
 long set 2ft. in ground, scribed 4E-1332 with earth mound
 24ins. base 16ins. high around same.

No stone or bearing objects available.

THENCE S. 58° 46' W.

4436.5 To Cor. 1 ^{No} and place of beginning. Mag. var. 18° 45' to 19° 15' E.

G ASSOCIATION. PLACER Mining Claim

Beginning at Cor. 1 ^{No} identical with location and with Cor. 6
 C Association, this survey, previously described.

U.S.L.M. ^{No} sur. 1332 bears S. 75° 56' W. ^{4284.30} ~~4284.30~~ ✓

No other bearings available.

THENCE N. 69° 43' E.

5.0 Center wagon road, course S.E.

3671.5 To Cor. 2 ^{No} identical with location, ^P a spruce post 4ins. sq.
 4ft. long set 2ft. in ground, scribed 2G-1332 with earth mound
 24ins. base 16ins. high around same.

No stone or bearing objects available for corner.

THENCE S. 2° 26' E.

698.0 Mammoth Creek 3ft. wide, course northwesterly,
 1187.5 To Cor. 3 ^{No} identical with location, ^P a spruce post 4ins. sq.
 4ft. long set 2ft. in ground, scribed 3G-1332 with earth
 mound 24ins. base 16ins. high around same.

No stone or bearings available for corner.

THENCE S. 79° 32' W.

3370.0 Buff Creek 16ft. wide, course N. 40° W.

3528.0 To Cor. 4 ^{No} identical with location and with Cor. 7 ^{No} C Associa-
 tion, this survey, previously described.

THENCE N. 2° 35' W.

Along line 7-6 C Association above, ^{No}

205.4 Center Buff Creek 16ft. wide, course N. 60° W.

535.4 To Cor. 1 ^{No} and place of beginning. Mag. var. 19° E. to 20° E.

FIELD NOTES -- MINERAL SURVEY NO. 1332

AREAS

Total area in C Association	37.242 acres	✓
" " " E "	54.5 ⁷¹⁰ 522	" ✓
" " " G "	68.311	" ✓
Grand total area	160.1 48 ²⁶³	" ✓

LOCATION

This claim is on unsurveyed ground and situate on Arctic and Buff Creeks tributary to Cripple River about 2.5 miles from mouth of said Arctic Creek and about 14 miles northwesterly from the town of Nome, in Cape Nome Recording Precinct, Territory of Alaska.

EXPENDITURE OF \$500.00

On C ASSN.

Crossed out by A. G. Blake.

	Value
From Cor. 4 C	
1- Placer workings 100x12xft. deep in creek bed, west end N. 46 W. 203ft. thence to sta. 187 line 3-4,	\$ 200.00
2- Cut 30x3x3ft. Co. N. 20 E. W. end bears N. 27 30 W. 200ft.	15.00
3- " 55x4x3ft. Co. north W. " " N. 30 30 W. 244 "	40.00
4- " 75x3x3ft. in creek, filled up, E. end about 140ft. below sta. 187 line 3-4,	25.00
From Cor. 5-C	
5- Cut 70x3x2ft. Co. N. 61 W. S. end bears S. 86 W. 95ft.	\$ 25.00
From Cor. 1-C	
6- Cut 60x4x3ft. Co. S. 60 E. W. end bears N. 3 35 E, 324ft.	\$ 40.00
From sta. 826 line 5-6	
7- Cut 200x3x3ft. in Buff. Creek, washed out, west end about 500ft. from mouth of said creek,	\$ 75.00
8- Cut 60x3x3ft. Co. N. 30 E. W. end bears N. 78 45 W. 326ft.	30.00
9- " 50x3x2ft. " N. 40 E. W. " " N. 81 W. 306ft.	15.00
From Cor. 6-C	
10- Placer workings in creek, 16x5ft. deep, W. end bears west 422ft. thence S. E. 72ft. upstream,	\$ 230.00
11- Crosscut 45x6x4ft. deep, Co. N. 25 E. S. end bears west 422ft. from Cor. 6,	40.00
G.P.	\$ 735.00

FIELD NOTES - MINERAL SURVEY NO. 1332

EXPENDITURE OF \$500.00

I certify that the value of the labor and improvements made upon and for the benefit of each of the locations embraced in said mining claim, by the claimant or her grantors, is not less than five hundred dollars and that said improvements consist of:

On C ASSOCIATION		Value
From Cor. 4		
✓ 1-	Placer workings 100x12x4ft. deep, in bed of Arctic Creek, west end bears N. 46° W. 203ft. thence easterly to station 187 of line 3-4,	\$ 200.00
✓ 2-	Cut 30x3x3ft. Co. N. 29° E. W. end bears N. 27° 30' W. 200ft.	15.00
✓ 3-	" 55x4x3ft. Co. north W. " " N. 30° 30' W. 244 "	40.00
✓ 4-	" 75x3x3 " in Arctic Creek, filled up. N. end about 140ft. below sta. 187 line 3-4,	\$ 25.00
From Cor. 5		
✓ 5-	Cut 70x3x2ft. Co. N. 61° W. S. end bears S. 86° W. 95ft.	25.00
From Cor. 1		
✓ 6-	Cut 60x4x3ft. Co. S. 60° E. W. end bears N. 3° 35' E. 324ft.	40.00
From sta. 826 line 5-6		
✓ 7-	Cut 200x3x3ft. in Buff Creek, washed out, W. end about 500ft. from mouth of said creek, ^{course NW} E. end bears N. 75° 15' W. 690ft.	\$ 75.00
✓ 8-	Cut 60x3x3ft. Co. N. 30° E. W. end bears N. 78° 45' W. 326ft.	30.00
✓ 9-	" 50x3x2ft. Co. N. 40° E. W. " " N. 81° W. 306ft.	15.00
From Cor. 6		
✓ 10-	Placer workings in Buff Creek 16x5ft. deep, W. end bears west 422ft. thence S. E. 72ft. upstream,	\$ 250.00
✓ 11-	Crosscut in creek, 45x6x4ft. deep, Co. N. 25° E. S. end bears west 422ft. from Cor. 6,	40.00
12-	Placer workings in Buff Creek, 36ft. wide 4ft. deep, running N. 50° W. 320ft. from sta. 283 line 6-7,	\$ 1700.00
13-	One-fifth interest in road construction from this survey to mouth of Arctic Creek,	\$ 150.00
14-	Hand drilling on claim done in 1911 and 1912, holes not now in evidence.	\$ 200.00
Total Value		\$ 2785.00

FIELD NOTES - MINERAL SURVEY NO. 1332

On E ASSOCIATION

From Cor. 45 (sta. 177.8 line 1-2)

1-	Placer workings in Arctic Creek, 12ft. wide 4ft. deep, running easterly 370ft. from sta. 324 line 1-2, E. end of same bears N. 60° E. 375ft.	Value	\$ 700.00
2-	Cut 60x3x3ft. Co. north. S. end bears N. 38° E. 251ft.		30.00
3-	" 60x3x3ft. Co. S. 30° E. N. " " N. 71° E. 181 "		30.00
4-	" 65x3x3 " Co. S. 30° E. N. " " N. 71° E. 169 "		25.00
5-	" 45x4x1.5 Co. S. 20° E. N. " " N. 72° E. 156 "		20.00
6-	" 50x4x2ft. Co. south N. " " N. 78° E. 104 "		20.00
7-	" 60x3x3ft. Co. N. 80° W. E. end " N. 12° E. 110 "		30.00
From Cor. 48			
8-	Cut 60x3x3ft. Co. N. 20° W. S. end bears S. 56° 38' W. 257ft.		30.00
9-	" 276x3x3ft. Co. N. 59° W. S. " " S. 54° 54' W. 272 "		140.00
10-	" 40x4x3ft. Co. N. 20° W. S. " " S. 57° 51' W. 296 "		30.00
11-	" 60x3x3ft. Co. N. 28° W. S. " " N. 21° 30' W. 405 "		30.00
12-	" 30x2x2ft. Co. N. 20° E. S. " " N. 64° W. 457 "		10.00
13-	" 30x3x2ft. Co. N. 20° E. S. " " N. 34° 20' W. 481 "		10.00
14-	Miscellaneous scattering small pits,		20.00
15-	One-fifth interest in road construction from this survey to mouth of Arctic Creek,		\$150.00
16-	Hand-drilling, done on claim in 1911 and 1912, holes not now in evidence,		\$ 200.00
Total value			\$ 1475.00

On G. ASSOCIATION.

From Cor. 1

1-	Ditch 210x3x2ft. outlet bears S. 23° E. 203ft. thence southeasterly 210ft. to Mammoth Creek at intake,		\$ 50.00
2-	Placer workings in Buff Creek 30ft. x 4ft. deep, running 25ft. upstream from sta. 252, line 4-1,		\$ 120.00
From sta. 2570 line 3-4			
3-	cut 35x3x3ft. Co. N. 70° W. E. end bears N. 31° 28' W. 80ft.		\$ 20.00
4-	" 60x4x3ft. Co. S. 65° W. E. " " N. 18° 58' W. 113 "		55.00
5-	" 50x3x3 " Co. S. 65° W. E. " " N. 28° 13' W. 162 "		25.00
6-	" 40x3x3 " Co. S. 65° W. E. " " N. 5° 38' W. 152 "		20.00
7-	" 40x8x5 " Co. N. 60° E. W. " " N. 5° 14' W. 126 "		100.00
8-	" 40x4x3 " Co. north W. " " N. 0° 41' W. 132 "		30.00

FIELD NOTES - MINERAL SURVEY NO. 1332

- 9- Cut 56x3x2ft. Co. S. 65° W. W. end bears N. 46° 28' W. 162ft. \$ 25.00
- 10- One-fifth interest in road construction from this survey to mouth of Arctic Creek, \$ 150.00
- 11- Hand drilling on claim done in 1911 and 1912, holes not now in evidence. \$ 200.00
- Total value \$ 795.00 ✓
- Grand total value \$5055.00 ✓

NOTE: The above mentioned road construction consists of clearing out of brush and roots, leveling surface and graveling same along the banks of Arctic, Buff and Mammoth Creeks from mouth of Arctic Creek, for a necessary wagon road to bring supplies and machinery to this claim and to Sur. 1331 at mouth of Arctic Creek, also owned by claimant herein.

One-fifth of the value of the whole work is apportioned to each location in surveys 1331 and 1332.

OTHER IMPROVEMENTS

- 16- Cut 1.5 ft. x 1ft. deep, west end bears S. 59° W. 215ft. from Cor. 50 thence S. 70° E. 80ft. thence S. 51° E. 160ft. to Buff Creek. Claimant unknown.
- 17- Placer workings in Arctic Creek 150x12x4ft. Co. N. E. lower end bears N. 57° W. 208ft. from sta. 2934 of line 4-1 E Assn. Claimant unknown.
- 18- Dredged ground averaging .70ft. wide 400ft. long running south-westerly from sta. 70 line 3-4 E Assn. Claimant unknown. W. end same bears N. 78° W. 526ft. from Cor. A E Assn.

I N S T R U M E N T

This survey was made with a Bausch & Lomb mining transit, No. 7932 having 4 in. vertical circle, solar eyepiece, and reading to single minutes.

The distances were measured with a 200ft. steel tape of standard make with plumbobs used on brushy or sloping ground.

The courses were deflected from the true meridian as determined by the average of two direct solar observations with reversal of instrument, at Cor. 8 of C Assn. at 8 a.m. Aug. 24th, 1922 and checked by angular connection with the lines of Sur. 1260 a prior survey made by me.

FIELD NOTES - MINERAL SURVEY NO. 1332

TIE LINES TO U.S.L.M. ^{No} SUR. 1332

Begin at Cor. 1 E Assn.

Thence N. 17° 59' W. 177.8ft.	To Cor. 4 C Association
" S. 66° 58' W. 440.2 "	To Cor. 5 C "
" S. 74° 35' W. 730.0 "	To Cor. 1 C "
" S. 26° 30' W. 2398.0 "	To U.S.L.M. ^{No} SUR. 1332

Cal. course and distance from Cor. 1 E, S. 43° 38' W. 3237.36 ✓

Begin at Cor. 1 G Assn. ^{Association}

Thence N. 61° 28' W. 3717.0ft.	To Cor. 5 C Association
" S. 74° 35' W. 730.0 "	To Cor. 1 C "
" S. 26° 30' W. 2398.0 "	To U.S.L.M. ^{No} SUR. 1332,

Cal. course and distance from Cor. 1 G, S. 75° 50' W. ^{No} ~~4289.30ft.~~ ^{4289.30ft.}

Because of intervening high, rough and difficult ground between the No. 1 Cors. of the E. and G Associations and U.S.L.M. ^{No} 1332, I run the angular lines and calculate the courses and distances to the location monument, as given above.

ESTABLISHMENT OF LOCATION MONUMENT ^{No} SUR. 1332

For this U.S.L.M. I mark a schist slab 4ft. x 2ft. projecting 1 ft. above surface, U.S.L.M. ^{No} SUR. 1332 and cross (x) for true point on top surface and erect stone mound 6ft. base 4ft. high S. side of same.

Cor. 1 C Association bears N. 26° 30' E. 2398.0ft.

Cor. 2 C " " N. 31° 55' E.

Mouth of Rock Creek bears N. 33° 35' W. about 1600ft.

Round top of mountain bears N. 60° 35' W. about 1.5 miles,

Cor. 1 B Association Sur. 1251 bears S. 34° 02' W. 2931.0ft.

Rock tip on high mountain bears S. 20° 45' E. about 1.5 miles,

No other bearings available.

This U.S.L.M. is situate on high ground in rock patch about 1800ft. south of Arctic Creek in Lat. 64° 32' N. Long. 165° 47' W.

FIELD NOTES - MINERAL SURVEY NO.1332

R E M A R K S

The survey of this claim is identical with its location and the disagreement between these field notes and the corresponding location certificates, is due to errors in the latter.

On the north, south and east the ground is unsurveyed and claims and claimants unknown.

On the west No. One Arctic Creek placer, unsurveyed, adjoins, Frank Hall claimant to same.

Form 125

SIGNAL CORPS, UNITED STATES ARMY
WASHINGTON-ALASKA MILITARY CABLE AND TELEGRAPH SYSTEM
TELEGRAM

16

150

RECEIVED at

26 S S 58 COLLECT NL ALAS IUPD

NOME ALASKA MARCH 29 1923

SURVEYOR GENERAL

JUNEAU ALASKA

RECEIVED
OFFICE OF SURVEYOR GENERAL
JUNEAU, ALASKA

MAR 31 1923

ANSWERED

COURSE AND DISTANCE FROM CORNER THREE A CLAIM SURVEY THIRTEEN
THIRTY ONE TO CORNER FOUR HOT AIR CLAIM SURVEY ELEVEN
HUNDRED AND TWO IS SOUTH THIRTEEN DEGREES FIFTY SEVEN MINUTES
EAST EIGHT HUNDRED FORTY SIX AND EIGHT TENTHS FEET STOP
SURVEY ONE TWENTY SEVENTH INSTANT AND AFFIDAVITS OF ASSISTANT AND
SELF MAILED YOU TODAY WITH CORRECTED NOTES

ARTHUR G BLAKE

1026 AM 30TH

386 A

FINAL OATHS FOR SURVEYS.

LIST OF NAMES.

A list of the names of the individuals employed by Arthur G. Blake
 United States Mineral Surveyor, to assist in running, measuring, and marking the lines, corners, and
 boundaries described in the foregoing field notes of the survey of the mining claim of
A. L. Keene
 known as the C, E and G Association places
 and showing the respective capacities in which they acted.

J. J. Stokes , *Chairman.*
J. J. Hale , *Chairman.*
F. J. Hale , *Asman.*
 , *Flagman.*

FINAL OATHS OF ASSISTANTS.

We, J. J. Stokes and F. J. Hale
 and G. Blake, do solemnly swear that we assisted Arthur
G. Blake, United States Mineral Surveyor, in marking the corners and surveying
 the boundaries of the mining claim of A. L. Keene
 known as the C, E, and G Association places
 represented in the foregoing field notes as having been surveyed by said mineral surveyor and under his
 direction; and that said survey has been in all respects, to the best of our knowledge and belief, faithfully
 and correctly executed, and the corner and boundary monuments established according to law and the instruc-
 tions furnished by the United States Surveyor-General for Alaska

J. J. Stokes , *Chairman.*
F. J. Hale , *Chairman.*
F. J. Hale , *Asman.*
 , *Flagman.*

Subscribed and sworn to by the above-named persons before me this 11th

day of September, 1922

James S. Keene 187
 Mining Surveyor of Alaska
 at Nome, M. Comm.
 expires May 27, 1920.
 9-1023

FINAL OATH OF U. S. MINERAL SURVEYOR.

I, Arthur G. Blake, U. S. Mineral Surveyor, do solemnly swear that, in pursuance of instructions received from the United States Surveyor General for Alaska, dated August 18th 1922, I have, in strict conformity to the laws of the United States, the official regulations and instructions thereunder, and the instructions of said Surveyor General, faithfully and correctly executed the survey of the Mining Claim of A. S. Kern, known as the C Association, E Association and G Association, known as the placer mining claims, situate in Cape Nome Redoubt District and Territory of Alaska Mining District, Coburn, in Section _____, Township No. _____, Range No. _____, and designated as Survey No. 1332, as represented in the foregoing field notes, which accurately show the boundaries of said mining claim as distinctly marked by monuments on the ground, and described in the attached copy of the location certificate, which was received by me from the Surveyor General with said instructions, and that all the corners of said survey have been established and perpetuated in strict accordance with the law, official regulations and instructions thereunder; and I do further solemnly swear that the foregoing are the true and original field notes of said survey and my report therein, and that the labor expended and improvements made upon said mining claim by claimant or her grantors are as therein fully stated, and that the character, extent, location, and itemized value thereof are specified therein with particularity and full detail, and that no portion of said labor or improvements so credited to this claim has been included in the estimate of expenditures upon any other claim.

Arthur G. Blake
U. S. Mineral Surveyor.

Subscribed and sworn to by the said Arthur G. Blake
U. S. Mineral Surveyor, before me the undersigned
this 27th
day of Sept, 1922

L. E. Heath
Notary Public for Alaska

My Com. Expires Nov. 4 - 1925

**SURVEYOR GENERAL'S CERTIFICATE OF APPROVAL OF FIELD NOTES
AND SURVEY OF MINING CLAIM**

**DEPARTMENT OF THE INTERIOR
OFFICE OF U. S. SURVEYOR GENERAL**

Juneau, Alaska,

May 28, 1923.

I, U. S. Surveyor General for Alaska,

do hereby certify that the foregoing and hereto attached Field Notes and Return of the Survey of the
Mining Claim of A. L. Keene,

known as the

C, E and G Association Placer Mining Claims,

situate in Nome mining district,

County, Territory of Alaska,

in Section _____, Township No. _____, Range No. _____

designated as Survey No. 1332

executed by Arthur G. Blake, U. S. Mineral

Surveyor, August 20 - 24, 1922, under my instructions dated

August 18, 1922, have been critically examined and the necessary

corrections and explanations made, and the said Field Notes and Return, and the survey they describe,
are hereby approved. The certified copy of the location certificate filed by the applicant for survey is
on file in this office and a true copy of said certified copy of said location certificate is included and
made a part of the transcript of the field notes.


U. S. Surveyor General for Alaska.

MINERAL SURVEY NO. 1332

R E P O R T

A - The soil of this claim is composed principally of decomposed mineral bearing schists and limestones from the adjoining hills the surface supporting a growth of moss, grass and occasional patches of dwarf willows. The stream bottoms are gravel filled with a covering of 2 or 3 ft. of alluvium and usually carrying a growth of small willows, except in the channels proper which are bare of earth and vegetation.

B - The only streams on this claim are Mammoth Creek about 4ft. wide which flows westerly through the full length of the G. Association to its junction with Buff Creek; Buff Creek 10 to 16ft. wide flows northwesterly nearly the full length of the G Association to its junction with Arctic Creek, and Arctic Creek 16 to 20ft. wide which flows southwesterly through the full length of the E Association and west end of the G Association.

16- Cut 240x1.5 x 1ft. deep, west end bears S. 59° W. 215ft. from Cor. 5 G Assn. Course southeasterly to Buff Creek.

17- Placer workings in Arctic Creek 150x12x4ft. deep, course N.E. West end bears N. 57° W. 208ft. from sta. 2934 line 4-1 E Assn.

18- Dredged ground averaging 400ft. long 70ft. wide, extending southwesterly from sta. 70 line 3-4 E Assn.

Claimants to all of above work unknown.

C The workings otherwise on this claim consist of:

On G ASSOCIATION
From Cor. 4

1- Placer workings 100x12x4ft. deep, in bed of Arctic Creek, West end bears N. 46° W. 203ft. thence easterly to sta. 187 of line 3-4.

2- Cut 30x3x3ft. Course N. 30° E. W. end bears N. 27° 30' W. 200ft.

3- " 55x4x3 " " north W. " " N. 30° 30' W. 244 "

4- " 75x7x3 " in Arctic Creek, filled up, E. end about 140ft. below sta. 187 line 3-4 of G Assn.

From Cor. 5

5- Cut 70x3x3ft. Course N. 61° W. S. end bears S. 26° W. 95ft.

From Cor. 1

6- Cut 60x4x3ft. Course S. 60° E. W. end bears N. 3° 35' E. 324ft.

MINERAL SURVEY NO. 1332

From sta. 826 line 5-6

7- Cut 200x3x3ft. in Buff Creek, washed out, west end about 500ft from mouth of said creek.

8- Cut 60x3x3ft. Course N.30° E. W. end bears N.78° 45' W. 326ft.

9- " 50x3x2 " " N.40° E. W. " " N.81° W. 306 "

From Cor. 6

10- Placer workings in Buff Creek 72x16x5ft. deep, Course S.E. W. end bears west 422ft.

11- Crosscut in creek, 45x6x4ft. deep, Course N.25° E. S. end bears west 422ft. from Cor. 6,

12- Placer workings in Buff Creek, 36ft. x 4ft. deep, extending N.50° W. 320ft. from sta. 283 line 6-7.

13- Wagon road construction from mouth of Buff Creek, to Cor. 6, built north of and adjacent to line 5-6.

14- Hand drilling for prospecting purposes at various places on claim, done in 1911 and 1912. Holes not now in evidence.

On E ASSOCIATION

From Cor. 4C (sta. 177.8 line 1-2)

1- Placer workings in Arctic Creek 12x4ft. deep, extending easterly from sta. 324 line 1-2, E. end bears N.60° E. 375ft.

2- Cut 60x3x3ft. Course north, S. end bears N.38° E. 251ft.

3- " 60x3x3 " Co. S.20° E. N. end bears N.71° E. 181 ft.

4- " 65x3x2 " Co. " N. " " N.71° E. 169 "

5- " 45x4x1.5 ft. Co. " N. " " N.72° E. 156 "

6- " 50x4x2ft. Co. south N. " " N.72° E. 104 "

7- " 60x3x3 " Co. N.80° W. E. " " N.12° E. 110 "

From Cor. 4E.

8- Cut 60x3x3ft. Co. N.20° W. S. end bears S.56° 38' W. 257ft.

9- " 276x3x3ft. Co. N.59° W. S. " " S.54° 54' W. 272 "

10- " 40x4x3 " Co. N.20° W. S. " " S.57° 51' W. 296 "

11- " 60x3x3 " Co. N.26° W. S. " " N.84° 30' W. 405 "

12- " 30x3x2 " Co. N.20° E. S. " " N.64° W. 457 "

13- " 30x3x2 " Co. N.20° E. S. " " N.34° 20' W. 481 "

14- Miscellaneous small scattering pits,

15- Wagon road construction along bank of Arctic Creek, extending 1600ft. northeasterly from line 1-2, with 300ft. along same creek near east end of claim.

16- Hand drilling for prospecting purposes at various places on claim done in 1911 and 1912. Holes not now to be found.

MINERAL SURVEY NO. 1532

On G ASSOCIATION
From Cor. 1

- 1- Ditch 210x3x2ft. Outlet bears S. 23° E. 203ft. thence south-easterly 210ft. to Mammoth Creek and intake.
- 2- Placer workings in Buff Creek 30x4ft. deep, running 25ft. upstream from sta. 252 line 4-1.

From sta. 3570 line 3-4

- | | | | | |
|----|---------------|------------------|----------------------------|-------|
| 3- | Cut 35x3x3ft. | Course N. 70° W. | E. end bears N. 31° 28' W. | 80ft. |
| 4- | " 20x4x3 " | " S. 65° W. | E. " " N. 18° 58' W. | 113 " |
| 5- | " 50x3x3 " | " S. 65° W. | E. " " N. 28° 13' W. | 162 " |
| 6- | " 40x3x3 " | " S. 65° W. | E. " " N. 5° 38' W. | 152 " |
| 7- | " 40x8x5 " | " N. 60° E. | W. " " N. 5° 14' W. | 126 " |
| 8- | " 40x4x3 " | " north | W. " " N. 0° 41' W. | 132 " |
| 9- | " 56x3x2 " | " S. 65° W. | " " " N. 46° 28' W. | 162 " |
- 10- Wagen road construction on claim extending easterly about 900ft. from Cor. 1 to Mammoth Creek.
- 11- Hand drilling done on claim for prospecting purposes, at various places places, in 1911 and 1912. Holes obliterated.

D The nearest post office and railroad station to the claim, is Nome a mining town of about 2000 population, situate on the shore of Bering Sea at mouth of Snake River and distant about 14 miles southeasterly from claim. Is also the terminus of the Seward Peninsula Railroad. (Not at present in operation)

E There are no known lodes or systems of lode deposits in the vicinity or on the claim.

F This claim is well adapted for placer mining by any of the customary methods. The beds of the streams have been mined to some extent by hand sluicing and by dredging. The sloping ground adjoining the streams is well fitted for mining by hydraulic methods having ample grade for the economical disposal of tailing. A sufficient supply of water under a good head can be obtained from the upper part of Arctic Creek for this purpose.

G The works and expenditures made by the claimant or her grantors for the development of the claim, consist of all the items described under paragraph C of this report.

MINERAL SURVEY NO. 1332

H There are no mines, salt licks, salt springs, mill seats or timber on this claim and there are no hot or medicinal springs known to be on the claim or within one half mile of same.

Arthur G. Blakey
U.S. Mineral Surveyor.

PROOF OF DRILLING.

Territory of Alaska)
Cape Nome Precinct.) ss.

H. D. LONGFELLOW, being first duly sworn,
deposes and says :

That he is a citizen of the United States, over the age of 21 years, a miner by occupation and a resident of Nome, Alaska. That he is now, and for many years last past has been well acquainted with placer mining claims known and described as the C Association, E Association on Arctic Creek and the G Association on Mammoth Gulch, a tributary to Arctic Creek, a tributary to Griddle River, in Cape Nome Recording Precinct, Territory of Alaska, now owned by A. L. Keene, and more particularly described under Mineral Survey No. 1332 of Nome Land District, Alaska.

That during the summer of 1911 and the summer of 1912, affiant performed the annual assessment work on all of said claims for said years, and in the summer of 1911 drilled 6 holes across the creek and flat on C Association just below the mouth of Buff Creek, which holes aggregated 40 lineal feet of drilling, and further drilled 8 holes across the creek and flat on E Association at a point about 400 feet above the ~~Westerly~~ or lower end line of said claim, which holes aggregated 42 ~~xxxxxxx~~ lineal feet of drilling, and further drilled 4 holes ^{8 or 88} ~~the~~ creek and flat on G Association at a point about 500 feet above the ~~Westerly~~ or lower end line of said claim ^(44 lineal feet) ~~xxxxxx~~ and that said drilling was of the reasonable value of \$100.00 upon each of said claims done and performed during said year 1911, and aggregated \$300.00 in value upon said claims.

Affiant further says that during the summer of 1912, he performed the annual assessment work upon all of said claims by drilling 9 holes (70 lineal feet) up the creek bed of Arctic Creek from the Junction of Buff Creek on said C Association, and by drilling 9 holes (61 lineal feet) on E Association down the creek bed of Arctic Creek commencing at a point about 400 feet below the upper or Easterly end line of said claim, and by drilling 7 holes (60 lineal feet) on G Association, at a point commencing at a point about 600 feet above the lower or Westerly end line of said claim and drilling up the creek bed of Mammoth Creek or Gulch. That said drilling was of the reasonable value of \$100.00 upon each of said claims done and performed during said year 1912, and aggregated \$300.00 in value upon said claims, but that time, weather conditions and freshets have eliminated the evidences of said drilling, and further affiant saith not.

H. D. Longfellow

Subscribed and sworn to before me on this
day of September, A. D. 1922.

[Signature]

Notary Public for Alaska,
Residing at Nome.

My commission expires _____ 1922.

OATH OF UNITED STATES MINERAL SURVEYOR

Under paragraph 167, General Mining Circular, approved March 29, 1909.

I, Arthur G. Blake, U. S. Mineral Surveyor, do solemnly swear that in pursuance of an order received from the U. S. Surveyor General for Alaska, dated Aug. 18th, 1922, I have made, under the provisions of paragraph 167, General Mining Circular, approved March 29, 1909, a personal and thorough examination, upon the premises, of the placer mining claim of A. S. Kane, known as the C Association, E Association and G Association ~~known as the~~ placer mining claims situate in Cape Nome Recording District and Mining District, Kenai of Alaska County,, embracing

in Township No. _____, Range No. _____, and that my report of such examination, hereto attached, is specific and in detail, and is a full and true statement of the facts upon all the points specified in the paragraph referred to.

Arthur G. Blake
U. S. Mineral Surveyor.

Subscribed and sworn to by the said Arthur G. Blake

_____, U. S. Mineral Surveyor,

before me the undersigned
this 27th day of Sept, 1922

L. C. Neal
Notary Public for Alaska
My Com. Expires Nov. 14 - 1921

CORROBORATIVE AFFIDAVIT UNDER PARAGRAPH 60, GENERAL MINING CIRCULAR.

APPROVED MAY 21, 1907.

Territory of Alaska
COUNTY OF Second Division

A. Longfellow and *M. P. Garity*
being first duly sworn, severally depose and say that he is personally and well acquainted with the placer-mining claim of *A. S. Keene*, known as the C-Association, E Association and *known as the G Association*, placer mining claims, situate in *Cape Nome*, Mining District, Territory of Alaska, County, embracing

Range No. _____; and also with the character of all the land included in said claim, and has been so acquainted for _____ years last past; that his knowledge of said claim and land is derived from *personal examination of same*,

and is such as to enable him to testify understandingly with regard thereto; that he has carefully read the foregoing report of *Arthur G. Blake*, U. S. Mineral Surveyor, and that to his own personal knowledge said report is in all respects true and accurate.

A. Longfellow

Subscribed and sworn to by the above-named persons before me this _____ day of _____, 191

Lawrence S. Kern
Notary Public

U. S. SURVEYOR GENERAL'S APPROVAL
OF
REPORT UNDER PARAGRAPH 167, GENERAL MINING CIRCULAR.
APPROVED MARCH 29, 1909.

DEPARTMENT OF THE INTERIOR,
OFFICE OF U. S. SURVEYOR GENERAL.

Juneau, Alaska,

May 28, 1923.

I, **Karl Theile**, U. S. Surveyor General for **Alaska**,

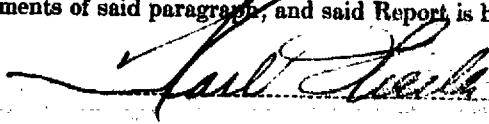
do hereby certify that the foregoing and annexed report of the examination of the placer mining claim of
A. L. Koene,

known as the

O. E and G Association Placer Mining Claims,

made by U. S. Mineral Surveyor **Arthur G. Blake**,

under the provisions of paragraph 167 of General Mining Circular, approved March 29, 1909, and under
my instructions dated **August 18**, 1922, has been carefully examined
and conforms in all respects to the requirements of said paragraph, and said Report is hereby approved.



U. S. Surveyor General for **Alaska**.