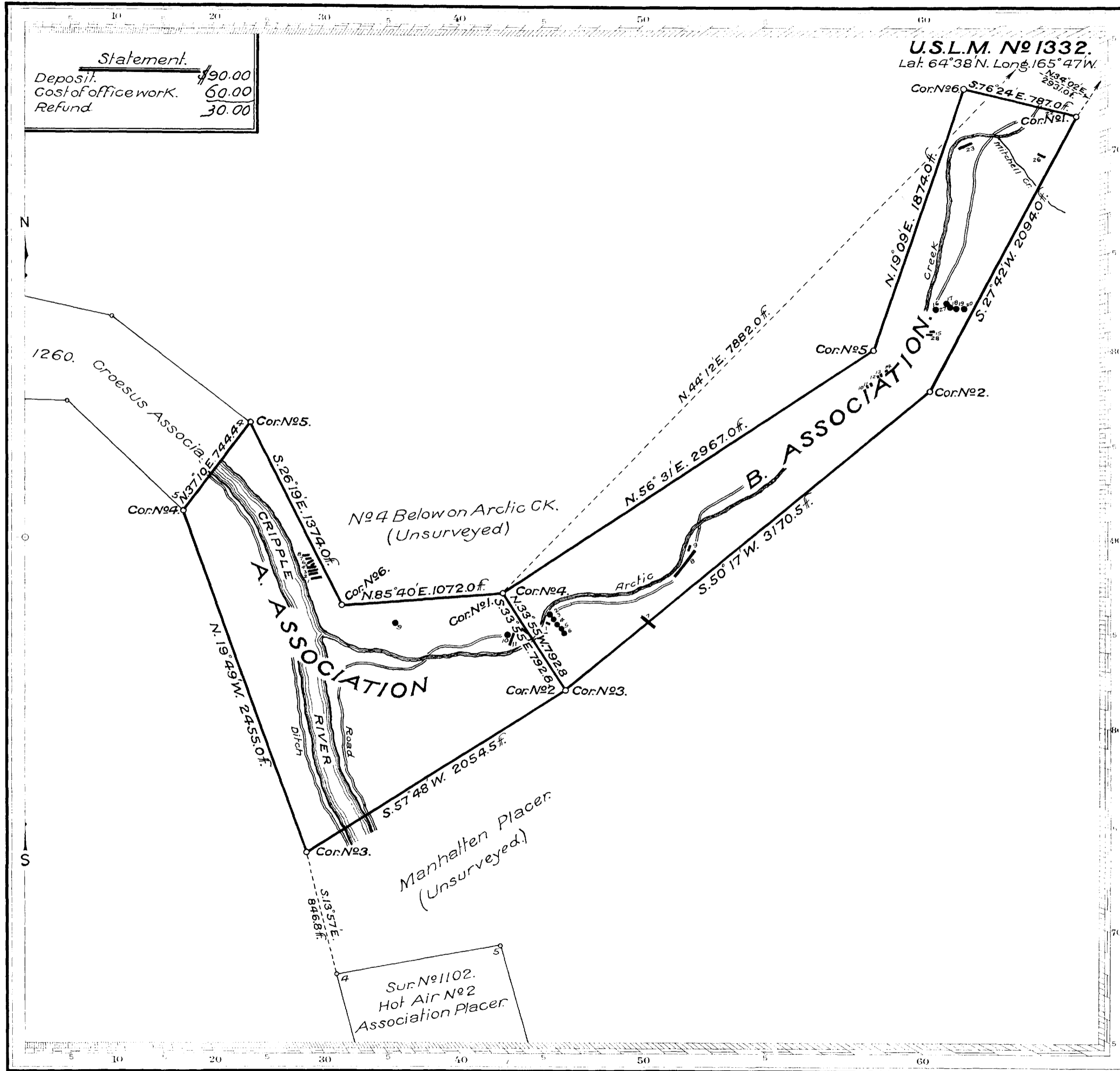


(4-675)



Claim Located December 15, 1910.  
 Amended August 17, 1922.  
 Mineral Survey No. **1331**.

Lot No. \_\_\_\_\_  
 Name \_\_\_\_\_ Land District \_\_\_\_\_

**PLAT**  
 OF THE CLAIM OF  
 A. L. KEENE

KNOWN AS THE  
 A and B Association Placer Mining Claims,

IN NOME MINING DISTRICT,  
 Territory of Alaska,  
 Containing an Area of 143.947 Acres.  
 Scale of 600 feet to the inch.  
 Variation 19° 05' - 19° 45' E.  
 SURVEYED August 24 - 27, 1922, BY  
 Arthur G. Blake, U.S. Deputy Mineral Surveyor,

The Original Field Notes of the Survey of the Mining Claim of  
 A. L. KEENE  
 known as the A and B Association Placer Mining  
 Claims,

from which this plat has been made under my direction,  
 have been examined and approved, and are on file in this Office,  
 and I hereby certify that they furnish such an accurate descrip-  
 tion of said Mining Claim as will, if incorporated into a patent,  
 serve fully to identify the premises, and that such reference is  
 made therein to natural objects or permanent monuments as  
 will perpetuate and fix the locus thereof.  
 I further certify that Five Hundred Dollars worth of labor has  
 been expended or improvements made upon said Mining Claim  
 by claimant or her grantors and that  
 said improvements consist of 21 cuts, 1 shaft, 10  
 pits, interest in road construction, and hand  
 drilling. Value of improvements \$1620.00

that the location of said improvements is correctly shown  
 upon this plat, and that no portion of said labor or improve-  
 ments has been included in the estimate of expenditures  
 upon any other claim.  
 And I further certify that this is a correct plat of said Mining  
 Claim made in conformity with said original field notes of the  
 survey thereof, and the same is hereby approved.

U.S. Surveyor General's Office *Carl Schick*  
 Juneau, Alaska, U.S. Surveyor General for  
 May 29, 1923. ALASKA.

MINERAL SURVEY No. 1331

RECEIVED  
OFFICE OF SURVEYOR GENERAL,  
JUNEAU, ALASKA,  
OCT 23 1922  
ANSWERED

Nome Land District

RECEIVED  
OFFICE OF SURVEYOR GENERAL  
JUNEAU, ALASKA

FIELD NOTES

MAY 14 1923

OF THE SURVEY OF THE MINING CLAIM OF

ANSWERED

A. R. Keene

KNOWN AS THE

A Association and B Association placer mining claims  
Cape Nome Recording Precinct and Mining District,  
Territory of Alaska County,

Section, Township, Range

Surveyed under instructions dated August 18<sup>th</sup>, 1922

by Arthur G. Blake  
U. S. Mineral Surveyor.

Claim located Dec. 15-1910, Dec. 15-1910, 19

Survey commenced Aug. 24<sup>th</sup>, 1922

Survey completed Aug. 27<sup>th</sup>, 1922

Address of claimant Nome - Alaska

DATES OF AMENDED LOCATIONS.

A Association, Aug. 17<sup>th</sup> 1922



## FIELD NOTES - MINERAL SURVEY NO. 1331

Feet  
 Sur. No 1260  
 placer, a limestone boulder 24x36ins. 6ins. above surface  
 with earth mound alongside and mkd. 40-1260, 5A-1331.  
 No bearings available.

THENCE S. 26° 19' E.

1374.0 To Cor. <sup>N<sup>e</sup></sup>6 identical with location, for which I set a  
 spruce post 4ins. sq. 3<sup>1</sup>/<sub>2</sub> ft. long 2ft. in ground, scribed  
 6A-1331 and erect earth mound 24ins. base 12ins. high around  
 same. No stone or bearings available for cor.

THENCE N. 85° 40' E.

1072.0 To Cor. <sup>N<sup>e</sup></sup>1 and place of beginning.

## B ASSOCIATION

Beginning at Cor. <sup>N<sup>e</sup></sup>1 identical with location, for which  
 I set a spruce post 4ins. sq. 3<sup>1</sup>/<sub>2</sub> ft. long 2ft. in ground,  
 scribed 1, B-1331 and erect earth mound 24ins. base 12ins.  
 high around same. No stone available for cor.  
 U.S.L.M. <sup>N<sup>e</sup></sup> 1332, bears N. 34° 02' E. 2931.0 ft. ✓  
 No other bearings available.

THENCE S. 27° 42' W.

560.0 Center Mitchell Creek, 10ft. wide, course N. N. W.

2094.0 To Cor. <sup>N<sup>e</sup></sup>2 identical with location, for which I set a  
 spruce post 4ins. sq. 3<sup>1</sup>/<sub>2</sub> ft. long 2ft. in ground, scribed 2B-  
 1331 and erect earth mound 24ins. base 12ins. high around  
 same. No stone or bearing objects available for cor.

THENCE S. 50° 17' W.

3170.5 To Cor. <sup>N<sup>e</sup></sup>3 identical with location and with Cor. <sup>N<sup>e</sup></sup>2, A Associa-  
 tion this survey, previously described.

THENCE N. 33° 55' W.

Along line 2-1 A Association, this survey,

423.0 Center Azotic Creek, course southwesterly,

792.8 To Cor. <sup>N<sup>e</sup></sup>4 identical with location and with Cor. <sup>N<sup>e</sup></sup>1, A Associa-  
 tion this survey, previously described.

THENCE N. 56° 31' E.

2967.0 To Cor. <sup>N<sup>e</sup></sup>5 identical with location, for which I set a

## FIELD NOTES - MINERAL SURVEY NO. 1331

Feet

spruce post 4ins. sq. 3 $\frac{1}{2}$  ft. long 2ft. in ground, scribed 5B-1331 and erect earth mound 24ins. base 12ins. high around same. No stone or bearing objects available.

THENCE N. 19° 09' E.

1874.0 To Cor. 6 <sup>N<sup>e</sup></sup> identical with location, for which I set a limestone 30x12x12ins. 15ins. in ground, mka. 6B-1331 and cross (x) on top surface for base point with earth and stone mound 2ft. high alongside. No bearings available.

THENCE S. 76° 24' E.

598.0 Center Arctic Creek, course southwesterly, 18ft. wide.

787.0 To Cor. 1 <sup>N<sup>e</sup></sup> and place of beginning.

Magnetic variation 19° 05' E. to 19° 45' E.

## A R E A S

Total area in A Association,	71.472 acres.
" " " B Association,	72.475 "
Total area	143.947 "

## L O C A T I O N

This claim is on unsurveyed ground and situate on Arctic Creek and Cripple River, distant about 15 miles northwesterly from the town of Nome and about 5 miles from Bering Sea, in the Cape Nome Recording Precinct, Territory of Alaska.

## EXPENDITURE OF \$500.00

I certify that the value of the labor and improvements done and made upon, or for the benefit of each of the locations embraced in said mining claim by the claimant or her grantors, is not less than five hundred dollars and that said improvements consist of:

ON A ASSOCIATION		Value
From Pt. A	N. 37° 30' W. 181ft. from Cor. 6	
1-	Cut 70x3x3ft. Co. S. 80° W. N. end bears N. 26° 45' W. 53ft.	\$35.00
2-	" 60x3.5 x3ft. " N. " " N. 35° W. 71 "	35.00

## FIELD NOTES - MINERAL SURVEY NO. 1331

	B.P.	Value
✓ 3- Cut 60x3x3ft. Co. S. 80° W. N. end bears N. 31° 19' W. 87ft.		30.00
✓ 4- " 60x3.5 x3ft. Co. S. 84° W. N. " " N. 31° 56' W. 100 "		35.00
✓ 5- " 25x6x1.5 " Co. S. 60° " N. " " N. 32° 15' W. 116 "		10.00
✓ 6- " 30x4x3 " Co. S. 60° W. N. " " N. 26° 47' W. 157 "		20.00
✓ 7- " 40x3x3ft. Co. S. 80° W. N. " " N. 27° 30' W. 168 "		20.00
✓ 8- " 30x3x3 " Co. S. 80° W. N. " " N. 30° 54' W. 202 "		15.00
From Cor. <sup>1</sup> / <sub>1</sub> , *		
✓ 10- Shaft caved, bears S. 6° 25' E. 291ft.		\$ 20.00
✓ 11- Cut 100x3x3ft. Co. S. 20° W. N. end bears S. 17° 36' E. 283ft. in creek and lower half, filled,		Value 75.00
✓ 12- Cut 40x2.5 x2ft. Co. S. 50° E. N. end bears S. 28° 28' E. 271ft.		20.00
13- One-fifth interest in road construction on this survey and on Sur. 1332,		\$150.00
14- Hand drilling on claim for prospecting purposes in 1911 and 1912. Holes now obliterated.		\$200.00
Total value \$		665.00 ✓

## On B ASSOCIATION

From Cor. <sup>1</sup>/<sub>4</sub>, B

✓ 1- Cut 20x4x3ft. Co. S. 70° E. N. end bears S. 54° 18' E. 352ft.		\$15.00
✓ 2- Pit 5x3x6ft. bears S. 64° 28' E. 347ft.		5.00
✓ 3- " 5x3 caved, bears S. 62° 40' E. 375ft.		5.00
✓ 4- " " " " S. 60° 01' E. 417 "		5.00
✓ 5- " " " " S. 58° 12' E. 459 "		5.00
✓ 6- " " " " S. 56° 10' E. 491 "		5.00
✓ 7- Cut 110x3x3ft. Co. S. 50° E. N. end bears S. 80° 29' E. 942ft.		\$ 60.00
From sta. 1958 <sup>27</sup> line 2-3		
✓ 8- Cut 220x5x4ft. Co. S. 37° W. N. end bears N. 20° 47' W. 187ft.		\$ 250.00
✓ 9- " 40x5x3ft. Co. N. 20° E. S. " " N. 33° 09' W. 190 "		35.00
From Cor. <sup>1</sup> / <sub>5</sub> , B		
✓ 11- Cut 24x6x3ft. Co. S. 20° E. N. end bears S. 4° 06' W. 221ft.		\$ 25.00
✓ 12- " 15x3x2ft. Co. S. 25° E. N. " " S. 8° 17' E. 198 "		5.00
✓ 13- " 30x4x3 " Co. " N. " " S. 14° 04' E. 174 "		20.00
✓ 14- " 30x4x3 " Co. " N. " " S. 28° 56' E. 158 "		20.00
✓ 15- " 20x4x3 " Co. east N. " " N. 70° 54' E. 406 "		10.00

## FIELD NOTES - MINERAL SURVEY NO. 1331

	B.F.	Value
		\$ 465.00 ✓
✓ 16- Pit 5x3ft. caved, bears N. 55° 50' E. 500ft.		5.00
✓ 17- " " " " N. 57° 45' E. 572 "		5.00
✓ 18- " " " " N. 59° 27' E. 589 "		5.00
✓ 19- " " " " N. 62° 30' E. 626 "		5.00
✓ 20- " " " " N. 64° 56' E. 667 "		5.00
21- Miscellaneous small scattering work		15.00
From Cor. <sup>N<sup>e</sup></sup> 6, B		
✓ 22- Out 95x3x3ft. Co. N. 25° E. W. end bears S. 72° 46' E. 613ft.		\$ 50.00
✓ 23- " 100x3x3 " Co. S. 65° W. E. " " S. 7° 14' E. 356 "		50.00
24- One-fifth interest, in wagon road construction on this survey and Sur. 1332,	Value	\$150.00
25- Hand drilling on claim for 1911 and 1912 for prospecting purposes. Holes not now in evidence.	Value	\$200.00
	Total Value	\$955.00 ✓
	Grand total value	\$1620.00 ✓

NOTE: The above mentioned road construction consists of clearing out of brush and roots, leveling surface and graveling same along the banks of Arctic, Buff and Mammoth Creeks from mouth of Arctic Creek, for a necessary wagon road to bring supplies and machinery to this survey and to Sur. <sup>N<sup>e</sup></sup> 1332 beginning near mouth of Buff Creek and also owned by claimant herein.

One-fifth of the value of the whole work is apportioned to each location in surveys <sup>N<sup>e</sup></sup> 1331 and <sup>N<sup>e</sup></sup> 1332.

## OTHER IMPROVEMENTS

- ✓ 1- Shaft caved, bears S. 72° E. 378ft. from Cor. <sup>N<sup>e</sup></sup> 6 A Association,
- ✓ 10- Out 30x3x3ft. Co. S. 20° E. N. end bears S. 11° W. 257ft. from <sup>N<sup>e</sup></sup> 5, B
- ✓ 21- " 35x3x3 " Co. east, N. " " N. 70° 54' E. 325 " <sup>N<sup>e</sup></sup> 5, B
- ✓ 27- Pit 5x3 caved, bears N. 56° 28' E. 584ft. from Cor. <sup>N<sup>e</sup></sup> 5, B <sup>Association.</sup>
- ✓ 28- Out 45x6x4ft. Co. N. 65° E. W. end bears S. 50° 57' E. 701 ft. from Cor. <sup>N<sup>e</sup></sup> 6, B Association.

Claimants to above work unknown.

## FIELD NOTES - MINERAL SURVEY NO. 1331

## I N S T R U M E N T

This survey was made with a Bausch & Lomb mining transit No. 7982 having 4 in. vertical circle, solar eyepiece and reading to single minutes.

Owing to continuous cloudy weather during the time of this survey, no observation for meridian could be made; I therefore determine and establish the courses and lines of this survey from the lines of Sur. <sup>N<sup>e</sup></sup> 1260 Croesus Association placer, a prior and adjoining survey made by me.

The distances were measured with a 200ft. steel tape of standard make with plumbobs used on brushy or sloping ground.

---

 TIE LINE TO U.S.L.M. <sup>N<sup>e</sup></sup> SUR. 1332

From Cor. <sup>N<sup>e</sup></sup> 1 A Association

Owing to intervening high and difficult ground between Cor. <sup>N<sup>e</sup></sup> 1, A Association and the location monument, it is not practicable to make a direct measurement, I therefore run an angular line between the two points as follows:

Beginning at Cor. <sup>N<sup>e</sup></sup> 1 A Association,

Thence S. 33° 55' N. 792.8ft. ✓ to Cor. <sup>N<sup>e</sup></sup> 2A, 3B-Sur. <sup>N<sup>e</sup></sup> 1331, ✓

" N. 50° 17' E. 3170.5ft. ✓ to Cor. <sup>N<sup>e</sup></sup> 2, B Association,

" N. 27° 42' E. 2094ft. ✓ to Cor. <sup>N<sup>e</sup></sup> 1, B "

" N. 34° 02' E. 2931ft. ✓ to U.S.L.M. <sup>N<sup>e</sup></sup> Sur. 1332,

Calculated course and distance, N. 44° 12' E. 7882.10ft.

---

## R E M A R K S

The survey of this claim is identical with its location and the disagreement between these field notes and the corresponding location certificates, is due to errors in the latter.

The Croesus Association placer Sur. <sup>N<sup>e</sup></sup> 1260 adjoins this survey along line 4-5, No. 4 Below on Arctic Creek, placer, Frank Hall claimant adjoins line 6-1 (unsurveyed) and Manhattan placer, unsurveyed adjoins line 2-3, A Association, claimant unknown. On all other sides unsurveyed ~~and~~ claims and claimants unknown.

---



## FIELD NOTES - MINERAL SURVEY NO. 1351

U.S.L.M. <sup>No</sup>~~954~~.1352

U.S. Location Monument <sup>No</sup>~~954~~.1352 to which this claim is tied is a schist slab 4ft. x 2ft. projecting 1ft. above surface, marked U.S.L.M. 1352 and cross (x) on top surface for true point, with stone mound 6ft. base 4ft. high south side of same.

Is situate on side of mountain approx. 300ft. above Arctic Creek about 1600 or 1800ft. S.  $33^{\circ} 35'$  E. from junction of Rock Creek with Arctic Creek, and in Lat.  $64^{\circ} 38'$  N. Long.  $165^{\circ} 47'$  W.

---

PROOF OF DRILLING.

Territory of Alaska )  
( ss.  
Cape Nome Precinct.)

H. D. LONGFELLOW, being first duly sworn, deposes and says :

That he is a citizen of the United States, over the age of twenty-one years, a miner by occupation and a resident of Nome, Alaska. That he is now and for many years has been well acquainted with placer mining claims known and described as the A ASSOCIATION and the B ASSOCIATION placers, situate on ARCTIC CREEK, a tributary to Cripple River, in Cape Nome Recording Precinct, Territory of Alaska, now owned by A. J. Keene, and more particularly described under Mineral Survey No. \_\_\_\_\_ of Nome, Land District, Alaska.

That during the summer of 1911 affiant performed the assessment/ work on said A Association claim by drilling twelve holes on said claim across the creek and flat at a point about five hundred feet below ~~at~~ the Easterly or upper boundary line of said claim, which said holes aggregated forty-seven lineal feet of drilling, and was of the value of \$100.00, and likewise during said summer, performed the assessment work on said B Association ~~place~~ by drilling seven holes on said claim across the creek and flat at a point about three hundred feet above the Westerly or lower end line of said claim, which said holes aggregated 46 lineal feet of drilling, and was of the value of \$100.00.

That during the summer of 1912, affiant performed the annual assessment work upon said A and B Association placers by drilling 11 holes on said A Association claim from the upper or Easterly end line down stream in the creek bed, aggregating 60 lineal feet of drilling, and likewise performed the assessment work for said year during said summer on the B Association placer by drilling 10 holes on said B Association claim from the upper or Easterly end of said claim down stream in the creek bed, aggregating 42 lineal feet of drilling. That said drilling was of the value of \$100.00 upon each of said claims during said year 1912, and that all of said drilling on said placers for said years 1911 and 1912 was of the reasonable value of \$400.00, but that time, weather conditions and freshets have eliminated the evidences of said drilling, and further affiant saith not.

*H. D. Longfellow*

Subscribed and sworn to before me on this 27th

day of September, A. D. 1912.

*[Signature]*

Notary Public for Alaska,  
Residing at Nome.

My commission expires \_\_\_\_\_ 1916.

Territory of Alaska, )  
 ) S.S.  
Second Judicial Division, )

Arthur G. Blake being first duly sworn, deposes and says that he is a duly qualified, commissioned and acting U.S. Mineral Surveyor for Alaska, That on March 27th. 1923 he carefully surveyed and measured the tie line from Cor. 3 A Association Sur. 1331 to Cor. 4 Hot Air Association Sur. 1102, That the true course and distance of same from said Cor. 3 A Association is S. 13° 57' E. 246.8 ft. to said Cor. 4 Hot Air Association Sur 1102, and that the two corners in question were found by him in place and distinctly and properly marked and mounded as required by law.

Arthur G. Blake  
U.S. Mineral Surveyor.

Subscribed and sworn to before me,  
this 28th day of March 1923.

E. Wooster  
Deputy Clerk of the District Court  
Territory of Alaska  
Second Division

Territory of Alaska. )  
 ) S.S.  
Second Judicial Division. )

E.H.Rohn being first duly sworn, deposes and says that on March 27th, 1927 he was employed and acted as chairman for Artur C. Blake U.S. Mineral Surveyor in surveying and measuring the tie line from Cor. 3 A Association Sur. No. 1331 to Cor. 4 Hot Air Association Sur. No. 1102. That the distance between the two above corners as carefully measured southerly from Cor. 3 Sur. 1331 is 846.8ft. That the said corners were found in place fully and distinctly marked and properly bounded as required by law and that to the best of his knowledge and belief this survey was faithfully and accurately made.

*E. H. Rohn*

Chairman.

Subscribed and sworn to before me,  
this 28th day of March 1927.

*E. Weafter*  
Deputy Clerk of the District Court  
Territory of Alaska  
Second Division

# FINAL OATHS FOR SURVEYS.

## LIST OF NAMES.

A list of the names of the individuals employed by Arthur G. Blake  
 United States Mineral Surveyor, to assist in running, measuring, and marking the lines, corners, and  
 boundaries described in the foregoing field notes of the survey of the mining claim of \_\_\_\_\_  
 \_\_\_\_\_  
A. R. Keene  
 known as the A Association and B Association places  
 and showing the respective capacities in which they acted.

J. J. Stokes ..... , Chairman.  
J. J. Hale ..... , Chairman.  
J. S. Hale ..... , Axman.  
 \_\_\_\_\_ , Flagman.

## FINAL OATHS OF ASSISTANTS.

We, J. J. Stokes and J. S. Hale  
 and \_\_\_\_\_, do solemnly swear that we assisted Arthur G. Blake  
 \_\_\_\_\_, United States Mineral Surveyor, in marking the corners and surveying  
 the boundaries of the mining claim of A. R. Keene  
 \_\_\_\_\_  
 known as the A Association and B Association places  
 represented in the foregoing field notes as having been surveyed by said mineral surveyor and under his  
 direction; and that said survey has been in all respects, to the best of our knowledge and belief, faithfully  
 and correctly executed, and the corner and boundary monuments established according to law and the instruc-  
 tions furnished by the United States Surveyor-General for Alaska

J. J. Stokes ..... , Chairman.  
J. S. Hale ..... , Chairman.  
J. S. Hale ..... , Axman.  
 \_\_\_\_\_ , Flagman

Subscribed and sworn to by the above-named persons before me this 14th  
 day of September, 1922.

Lawrence H. ...  
Surveyor-General for Alaska  
at Fairbanks, Alaska  
September 14, 1922

FINAL OATH OF U. S. MINERAL SURVEYOR.

I, Arthur G. Blake, U. S. Mineral Surveyor, do solemnly swear that, in pursuance of instructions received from the United States Surveyor General for The Territory of Alaska, dated August 18<sup>th</sup> 1922, I have, in strict conformity to the laws of the United States, the official regulations and instructions thereunder, and the instructions of said Surveyor General, faithfully and correctly executed the survey of the Mining Claim of A. C. Kern, known as the A-association and B-association lodes, situate in Barrow Recording District and Mining District, Territory of Alaska County, Barrow, in Section 133, Township No. 133, Range No. 133, and designated as Survey No. 133, as represented in the foregoing field notes, which accurately show the boundaries of said mining claim as distinctly marked by monuments on the ground, and described in the attached copy of the location certificate, which was received by me from the Surveyor General with said instructions, and that all the corners of said survey have been established and perpetuated in strict accordance with the law, official regulations and instructions thereunder; and I do further solemnly swear that the foregoing are the true and original field notes of said survey and my report therein, and that the labor expended and improvements made upon said mining claim by claimant or he grantors are as therein fully stated, and that the character, extent, location, and itemized value thereof are specified therein with particularity and full detail, and that no portion of said labor or improvements so credited to this claim has been included in the estimate of expenditures upon any other claim.

Arthur G. Blake  
U. S. Mineral Surveyor.

Subscribed and sworn to by the said Arthur G. Blake  
U. S. Mineral Surveyor, before me a Notary Public and  
for the Territory of Alaska this  
day of September, 1922.

Lawrence S. Kern  
Notary Public for Alaska at Barrow  
My Commission Expires May 15, 1926.

**SURVEYOR GENERAL'S CERTIFICATE OF APPROVAL OF FIELD NOTES  
AND SURVEY OF MINING CLAIM**

**DEPARTMENT OF THE INTERIOR  
OFFICE OF U. S. SURVEYOR GENERAL**

June 22, Alaska,

May 29, 1923.

I, U. S. Surveyor General for Alaska,

do hereby certify that the foregoing and hereto attached Field Notes and Return of the Survey of the Mining Claim of A. L. Keene,

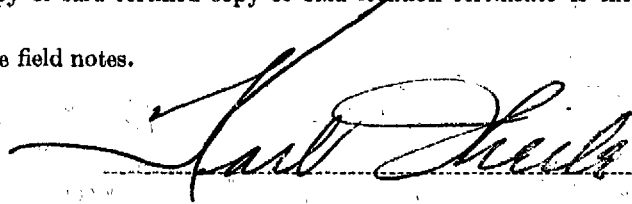
known as the  
A Association and B Association Placer Mining Claims,

situate in Nome mining district,  
Territory of Alaska, Country

in Section \_\_\_\_\_, Township No. \_\_\_\_\_, Range No. \_\_\_\_\_  
designated as Survey No. 1331

executed by Arthur G. Blake, U. S. Mineral  
Surveyor, August 24 - 27, 1922, under my instructions dated

August 18, 1922, have been critically examined and the necessary corrections and explanations made, and the said Field Notes and Return, and the survey they describe, are hereby approved. The certified copy of the location certificate filed by the applicant for survey is on file in this office and a true copy of said certified copy of said location certificate is included and made a part of the transcript of the field notes.



U. S. Surveyor General for Alaska.

## MINERAL SURVEY NO. 1331

## R E P O R T

A The soil of this claim is composed principally of decomposed mineral bearing schists and limestones from the adjoining hills the surface supporting a growth of moss, grass and occasional patches of dwarf willows. The stream bottoms are gravel filled, and excepting the stream channels proper which are bare of earth and vegetation, are covered with 2 or 3ft. of alluvium.

B The principal streams on the claim are Cripple River and Arctic Creek. Cripple River which is usually over 100ft. wide flows southerly lengthways through the A Association.

Arctic Creek flows southwesterly through the full length of the B Association and through the easterly part of the A Association to its junction with Cripple River.

Mitchell Creek about 10ft. wide flows northwesterly into the upper or northerly end of the B Association into Arctic Creek.

No other streams flow on or near this claim.

- ✓ 9- Shaft caved, bears S. 72 E. 378ft. from Cor. 6 A Association,
- ✓ 10- Cut 30x3x3ft. Co. S 20 E. N. end bears S. 11 W. 237ft. from Cor. 5, B.
- ✓ 22- " 35x3x3 " Co. east, N. " " N. 70 54 E. 585 " " 5, B.
- ✓ 27- Pit 5x3ft. caved, bears N. 56 28 E. 584ft. from Cor. 5, B Association.
- ✓ 26- Cut 45x6x4ft. Co. N. 65 E. W. end bears S. 50 57 E. 701ft. from Cor. 6, B Association.

Claimants to above work unknown.

C The workings otherwise on this claim consist of:

## On A ASSOCIATION

From Pt. A N. 37° 30' W. 161ft. from Cor. 6, A Association.

- ✓ 1- Cut 70x3x3ft. Co. S. 80° W. N. end bears N. 26 45 W. 53ft.
- ✓ 2- " 60x3.5 x3ft. Co. S. 80° W. N. end bears N. 35 W. 71 "
- ✓ 3- " 60x3x3ft. Co " N. " " N. 31 19 W. 87ft.
- ✓ 4- " 60x3.5x3ft. Co. S. 84° W. N. " " N. 31 56 W. 100ft.
- ✓ 5- " 25x6x1.5 " Co. S. 60° W. N. " " N. 32 15 W. 116 "
- ✓ 6- " 30x4x3 " Co. S. 60° W. N. " " N. 26 47 W. 137 "
- ✓ 7- " 40x3x3ft. Co. S. 80° W. N. " " N. 27 30 W. 168 "
- ✓ 8- " 30x3x3 " Co. S. 80° W. N. " " N. 30 54 W. 202 "



## MINERAL SURVEY NO. 1351

From Cor. 1, A, Association.

- ✓ 10- Shaft caved, bears S. 6° 25' E. 291ft.
- ✓ 11- Cut 100x3x3ft. Co. S. 20° W. N. end bears S. 17° 36' E. 283ft.
- ✓ 12- " 40x2.5x2ft. Co. S. 50° E. N. end bears S. 28° 28' E. 271ft.
- 13- Wagon road construction along banks of Arctic Creek from line 6-1 B Association to mouth of Arctic Creek.
- ✓ 14- Hand drilling at various places on both A and B Associations. Holes now obliterated.

On B ASSOCIATION  
From Cor. 4, B

- ✓ 1- Cut 20x4x3ft. Co. S. 70° E. N. end bears S. 54° 18' E. 352ft.
- ✓ 2- Pit 3x5ft. caved, bears S. 64° 28' E. 347ft.
- ✓ 3- " 3x5 " " S. 62° 40' E. 375 "
- ✓ 4- " " " " S. 60° 01' E. 417 "
- ✓ 5- " " " " S. 58° 12' E. 459 "
- ✓ 6- " " " " S. 56° 10' E. 491 "
- ✓ 7- Cut 110x3x3ft. Co. S. 50° E. N. end bears S. 50° 29' E. 942ft.

From sta. 1958 line 2-3

- ✓ 8- Cut 220x5x4ft. Co. S. 37° W. N. end bears N. 20° 47' W. 187ft.
- ✓ 9- " 40x5x3ft. Co. N. 20° E. S. end bears N. 33° 09' W. 190ft.

From Cor. 5, B.

- ✓ 11- Cut 24x6x3ft. Co. S. 20° E. N. end bears S. 4° 08' W. 231ft.
- 12- " 15x3x2 " Co. S. 25° E. N. " " S. 8° 17' E. 198 "
- ✓ 13- " 30x4x3 " Co. " N. " " S. 14° 04' E. 174ft.
- ✓ 14- " 30x4x3 " Co. " N. " " S. 28° 56' E. 158 "
- 15- " 20x4x3 " Co. east N. " " N. 70° 54' E. 408 "
- ✓ 16- Pit 3x5ft. caved, bears N. 55° 50' E. 500ft.
- ✓ 17- " " " " N. 57° 45' E. 572 "
- ✓ 18- " " " " N. 59° 27' E. 589 "
- ✓ 19- " " " " N. 62° 20' E. 626 "
- ✓ 20- " " " " N. 64° 56' E. 667 "
- ✓ 21- Miscellaneous small work,

From Cor. 6, B.

- ✓ 22- Cut 95x3x3ft. Co. N. 25° E. W. end bears S. 72° 46' E. 613ft.
- ✓ 23- " 100x3x3 " Co. S. 65° W. E. end bears S. 7° 14' E. 356ft.

B The nearest post-office and railroad station to the claim

is Nome a mining town of about

## MINERAL SURVEY NO. 1531

D The nearest post office and railroad station to the claim is Nome a mining town of about 2000 population situate on the shore of Bering Sea at mouth of Snake River and distant about 15 miles southeasterly from claim. Is also the terminus of the Seward Peninsula Railroad. (Not at present in operation)

E There are no known lodes or systems of lode deposits in the vicinity or on the claim.

F This claim is well adapted for placer mining by any of the customary methods, the beds of the streams having been prospected by by hand methods for that purpose. Dredging is being successfully carried on at present in Arctic Creek about one-half mile upstream from upper end of this claim.

The sloping ground adjoining the streams is well fitted for mining by hydraulic methods having ample grade for the economical disposal of tailing. A sufficient supply of water under a good head can be obtained from the upper part of Arctic Creek and other creeks tributary to same, for this purpose.

G The works and expenditures done and made by the claimant or her granters for the development of the claim, consist of all the items described under paragraph C of this report.

H There are no mines, salt licks, salt springs, mill seats or timber on this claim and there are no hot or medicinal springs known to be on the claim or within one half mile of same.

*Arthur G. Blake*  
U.S. Mineral Surveyor.

## OATH OF UNITED STATES MINERAL SURVEYOR

Under paragraph 167, General Mining Circular, approved March 29, 1909.

I, Arthur G. Blake, U. S. Mineral Surveyor,  
do solemnly swear that in pursuance of an order received from the U. S. Surveyor  
General for Alaska, dated Aug. 18<sup>th</sup>, 1922,  
I have made, under the provisions of paragraph 167, General Mining Circular,  
approved March 29, 1909, a personal and thorough examination, upon the premises,  
of the placer mining claim of A. R. Kerner

known as the A Association and B Association placers  
situate in Cape Nome Mining District,  
Territory of Alaska County, Nome, embracing

in Township No. 14, Range No. 14, and that my report  
of such examination, hereto attached, is specific and in detail, and is a full and true  
statement of the facts upon all the points specified in the paragraph referred to.

Arthur G. Blake

U. S. Mineral Surveyor.

Subscribed and sworn to by the said Arthur G. Blake, U. S. Mineral Surveyor,

before me a Notary Public for Alaska,  
this 29th day of September, 1922.

Lawrence S. Kern

Notary Public for Alaska at Nome  
My commission expires May 27-1926

CORROBORATIVE AFFIDAVIT UNDER PARAGRAPH 60, GENERAL MINING CIRCULAR.

APPROVED MAY 21, 1907.

Territory of Alaska  
Cape Nome Division

H. S. Longfellow and W. P. Garrity

being first duly sworn, severally depose and say that he is personally and well acquainted with the placer-mining claim of

W. L. Keene

, known as the A-Association and B-Association placer mining claims, situate in Cape Nome Mining District, Territory of Alaska, County, embracing

in Township No. Range No. ; and also with the character of

all the land included in said claim, and has been so acquainted for years last past; that his knowledge of said claim and land is derived from personal examination of same

and is such as to enable him to testify understandingly with regard thereto; that he has carefully read the foregoing report of Arthur B. Blake, U. S. Mineral Surveyor, and that to his own personal knowledge said report is in all respects true and accurate.

H. S. Longfellow  
W. P. Garrity

Subscribed and sworn to by the above-named persons before me this 27th day of September, 1922.

Lawrence S. Kern  
Notary Public for Alaska at Nome.  
My commission expires May 27, 1926

U. S. SURVEYOR GENERAL'S APPROVAL  
OF  
REPORT UNDER PARAGRAPH 167, GENERAL MINING CIRCULAR.  
APPROVED MARCH 29, 1909.

DEPARTMENT OF THE INTERIOR,  
OFFICE OF U. S. SURVEYOR GENERAL,

Juneau, Alaska,

May 29, 1923.

I, Karl Theile, U. S. Surveyor General for Alaska,

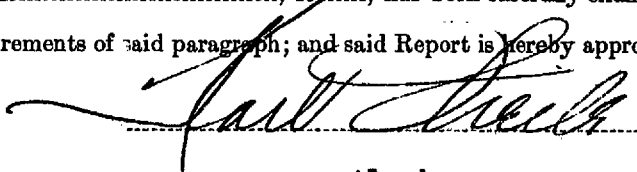
do hereby certify that the foregoing and annexed report of the examination of the placer mining claim of  
A. L. Keene,

known as the  
A Association and B Association Placer Mining Claims,

made by U. S. Mineral Surveyor Arthur G. Blske,

under the provisions of paragraph 167 of General Mining Circular, approved March 29, 1909, and under  
my instructions dated August 18, 1922,

has been carefully examined  
and conforms in all respects to the requirements of said paragraph; and said Report is hereby approved.



U. S. Surveyor General for Alaska.