



State of Alaska Dept of Natural Resources
Division of Mining, Land and Water
Public Access and Assertion Defense Unit
550 West 7th Avenue, Suite 1420
Anchorage, Alaska 99501



Memo

To: David Manzer, Alaska Land Status, Inc. Date: 1/13/2015
From: Gregg Pralle, Natural Resource Specialist II

Subject: RS 2477 and Trail Easement Research for the Cripple River Area Near Nome Alaska

After reviewing the files located in our office, electronic files searches, and discussions with Department of Natural Resources Northern Region personnel, we are presently unaware of any known and identified RS 2477 rights of way paralleling the Cripple River from its mouth in NW $\frac{1}{4}$ NW $\frac{1}{4}$ Section 13, Township 11 South, Range 36 West, Kateel Meridian; continuing upstream to the Nome to Teller Highway corridor within the following townships and ranges in the Kateel Meridian as determined from Alaska USGS 1:63 360 series topographic map Nome (C-2), (1950):

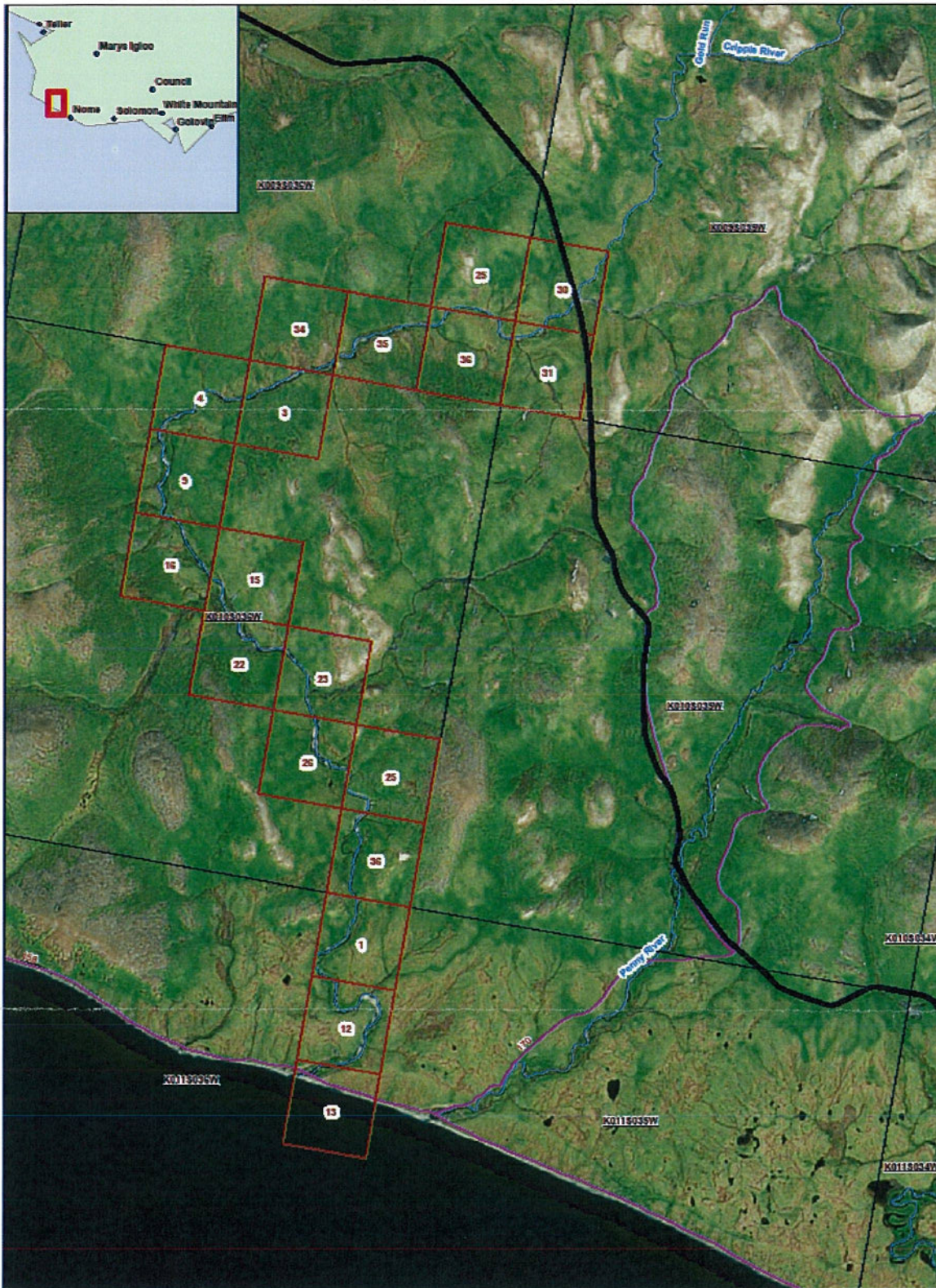
MTRS:

K011S036W12	K010S036W22	K009S036W34
K011S036W01	K010S036W15	K009S036W35
K010S036W36	K010S036W16	K009S036W36
K010S036W25	K010S036W09	K009S036W25
K010S036W26	K010S036W04	K009S035W31
K010S036W23	K010S036W03	K009S035W30

There are, however, two RST's in the general vicinity of the Cripple River. These are the Nome to Teller Coastal Trail (RST 158) and the Penny River Trail (RST 170). The Nome to Teller Coastal Trail (RST 158) crosses the Cripple River in Section 13 T011S, R013W KM as it parallels the coast line from Nome to Teller.

This research is by no means conclusive and reflects only known RS 2477 rights of way. It is possible that there are presently unknown and unidentified RS 2477 rights of way within the research area. Thank you for your concerns regarding this issue. If you have any further questions or concerns, feel free to contact me.

Gregg Pralle
NRS II
907-375-6472
gregg.pralle@alaska.gov
Public Access Assertion & Defense Unit
550 W 7th Suite 1420
Anchorage, AK 99501



Cripple River Area

- DOT Road System
- RST 2477 Trails
- Rivers and Streams
- Township
- Cripple River Selected Sections



Map Created 1-6-2015
By
Gracie Peake
DNR, NAD