

0 SOUTH RANGE 36 WEST OF THE KATEEL RIVER MERIDIAN, ALASKA

STATUS OF PUBLIC DOMAIN
 LAND AND MINERAL TITLES

MTP

FOR ORDERS EFFECTING DISPOSAL OR USE OF UN-IDENTIFIED LANDS WITHDRAWN FOR CLASSIFICATION MINERALS, WATER AND/OR OTHER PUBLIC PURPOSES REFER TO INDEX OF MISCELLANEOUS DOCUMENTS.

- PL 92-203 12/18/1971 Sec 11(a)(1) Wdl V/Sel F14908
- PLO 5184 Wdl CI affects Lds/Interests not conveyed
- F35186 Reindeer Gr Per affects Unapprop Lds W/I Tp

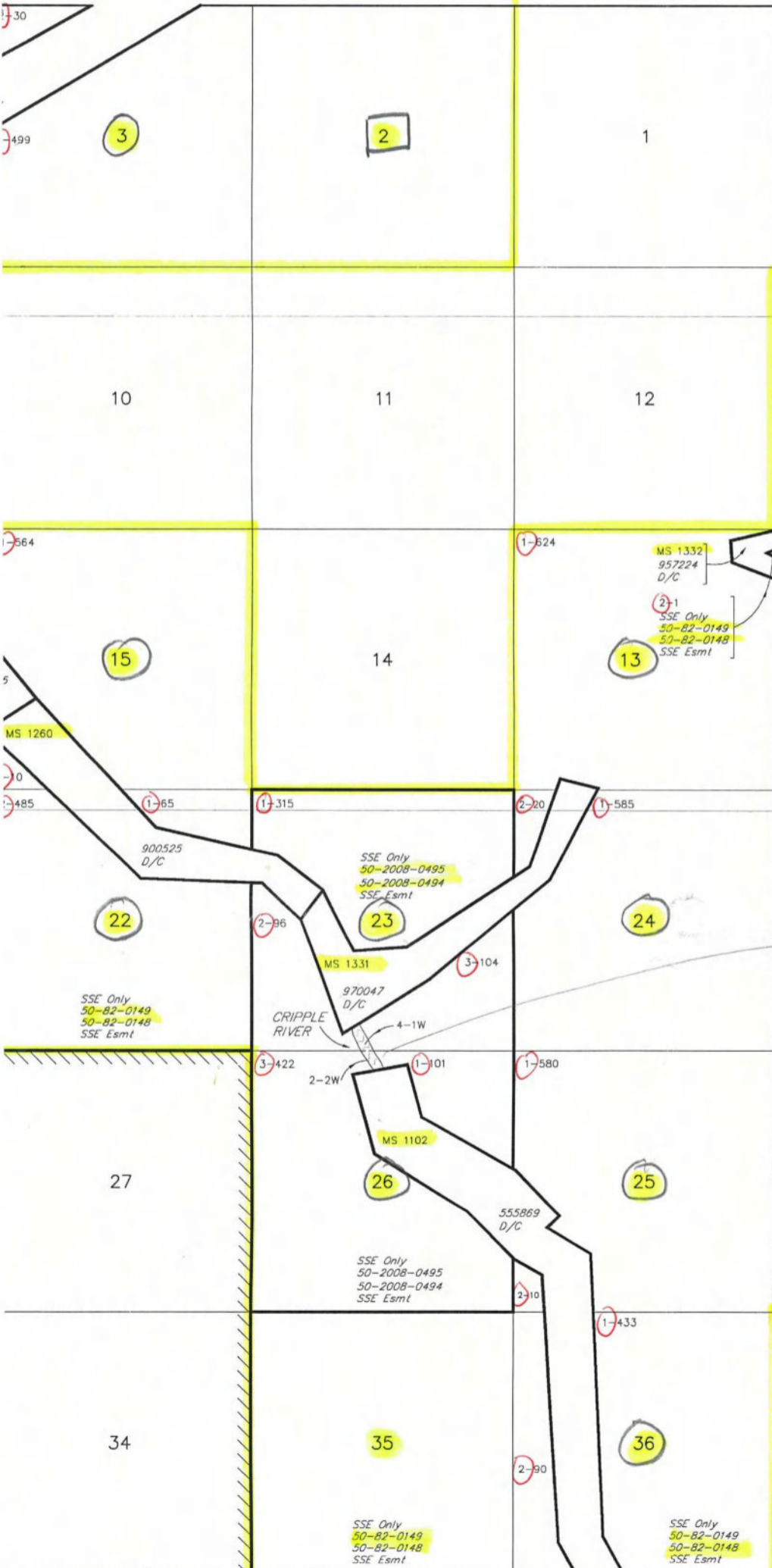
Patent 50-82-0148
 Sitnasuk Native Corp, Surface
 50-82-0149
 Bering Straits Native Corp, Subsurface

Patent 50-2008-0494
 Sitnasuk Native Corp, Surface
 50-2008-0495
 Bering Straits Native Corp, Subsurface

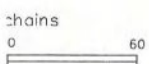
? CRIPPLE RIVER, LOTTED OUT FROM SURVEY

○ = SECTIONS LISTED IN UNSIGNED 2014 SITNASUK/AGE GOLD EXPOSITIONS TEMPORARY ACCESS ESMT. AGMT: SECS. 3, 4, 9, 13, 15, 16, 22, 23, 24, 25, 26, 36

□ = SECTIONS ON GPAA TRAIL ACCESS MAP WITH GPAA TRAILS DEPICTED BUT NOT LISTED IN SITNASUK/AGE ACCESS AGMT. SEC. 2



Lat 64°34'18.60"N
 Long 165°45'54.50"W



WARNING:
 This plot is the Bureau's Record of Title, and should be used only as a graphic display of the township survey data. Records herein do not reflect title changes which may have been effected by lateral movements of rivers or other bodies of water. Refer to the cadastral surveys for official survey information.

CURRENT TO		KR Mer
6-10-2010		T 10 S
		R 36 W

ACAD