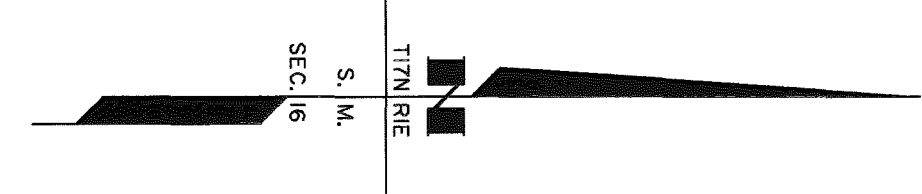


MATCH LINE SHEET 10

MATCH LINE SHEET 10

MATCH LINE SHEET 8

MATCH LINE SHEET 12



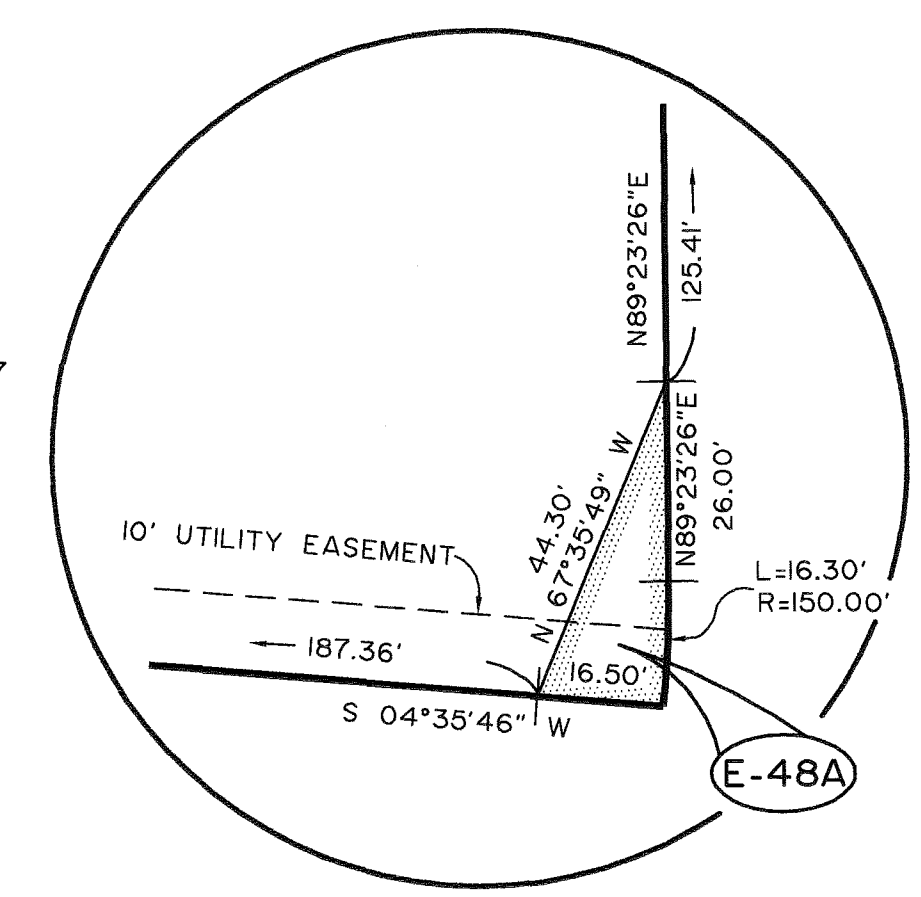
NOTES:  
1. STATION AND OFFSETS ON THIS SHEET ARE TO COMPUTED POSITIONS.

PARCEL NO.	INTEREST TO BE ACQUIRED	OWNER	LARGER PARCEL	TAKE INCLUDING EXISTING EASEMENT	NET TAKE	REMAINDER	Book	Page
55	FEE SIMPLE	BERNARD AND SUSANNA VANDERWEELE	6.775 AC±	70,002 S.F. (1.607 AC±)	70,002 S.F. (1.607 AC±)	5,168 AC±	0898	069
E-54	DELETED	A. J. SCHWICHTENBERG					0833	363
54A	FEE SIMPLE	MELVIN COUTURE	41,738 S.F.	1,525 S.F.	1,525 S.F.	40,213 S.F.	0755	853
* 54	FEE SIMPLE	DUANE M. AND MARY A. HANSON	42,359 S.F.	42,359 S.F.	42,359 S.F.	0 S.F.	0690	328
53A	FEE SIMPLE	PETROLANE INC.	41,937 S.F.	1,678 S.F.	1,678 S.F.	40,269 S.F.	0782	280
53	FEE SIMPLE	J.H. AND KIRSTEN K. CLINTON	39,899 S.F.	39,899 S.F.	39,899 S.F.	0 S.F.	0710	077
52B	FEE SIMPLE	LEROY E. AND KAREN H. ECKMAN	41,937 S.F.	1,831 S.F.	1,831 S.F.	40,106 S.F.	0737	0728
52A	FEE SIMPLE	S.W.J. PROPERTIES	41,937 S.F.	1,831 S.F.	1,831 S.F.	40,106 S.F.	0755	157
52	FEE SIMPLE	JOHN C. AND BARBARA A. BUTT	8,315 AC±	49,916 S.F. (1.146 AC±)	49,916 S.F. (1.146 AC±)	7,169 AC±	0803	696
51B	FEE SIMPLE	RAYMOND L. AND E. JOYCE MAINES	41,937 S.F.	2,440 S.F.	2,440 S.F.	39,497 S.F.	0737	0736
51A	DELETED	BAILEY'S A-I DISCOUNT FURNITURE INC.						
* 51	FEE SIMPLE	LAWRENCE M. AND DOROTHY L. WHITING	40,029 S.F.	40,029 S.F.	40,029 S.F.	0 S.F.	0686	982
* 50	FEE SIMPLE	LAWRENCE M. AND DOROTHY L. WHITING	40,077 S.F.	40,077 S.F.	40,077 S.F.	0 S.F.	0686	982
E-49B	UTILITY EASEMENT	BAILEY'S A-I DISCOUNT FURNITURE	41,966 S.F.	2,288 S.F.	2,288 S.F.	41,966 S.F.	1000	089
E-49A	UTILITY EASEMENT	AMERICA NORTH LLC	45,649 S.F.	2,267 S.F.	2,267 S.F.	45,649 S.F.	0999	669
49A	FEE SIMPLE	DAVID BRESHEARS, Trustee of the Montrose Trust	45,974 S.F.	325 S.F.	325 S.F.	45,649 S.F.	0793	052
E-49	EASEMENT	DAVID BRESHEARS, Trustee of the Montrose Trust	45,663 S.F.	5,694 S.F.	5,694 S.F.	45,663 S.F.	0793	060
E-48A	UTILITY EASEMENT	DWIGHT G. AND NORMA J. GOSNELL	40,049 S.F.	362 S.F.	362 S.F.	40,049 S.F.	1004	791
* 48	FEE SIMPLE	EDWARD & JOANN HARTIG, JAMES & ANN CORKRAN	54,229 S.F.	54,229 S.F.	54,229 S.F.	0 S.F.	0684	990
47	FEE SIMPLE	RICHARD A. & KAREN A. WIGGINS	20,033 S.F.	20,033 S.F.	20,033 S.F.	0 S.F.	0757	762
* 46	FEE SIMPLE	FEDALASKA FEDERAL CREDIT UNION	20,694 S.F.	20,694 S.F.	20,694 S.F.	0 S.F.	0670	0052

\* PARCEL NOTE:  
PARCELS ACQUIRED PRIOR TO PRELIMINARY APPROVAL BY THE BOROUGH. NAMES OF PRIOR OWNERS ARE SHOWN FOR TITLE TRACKING PURPOSES.

PARCEL INFORMATION

DATE	REVISIONS	BY
1/15/10	EDIT FOR CLOSE OUT	AJO
10/9/98	ADDED EASEMENTS E-49A & E-49B.	GE
9/28/98	ADDED EASEMENTS E-48A AND E-54.	GE
5/12/95	ADDED OFFSETS.	GE
4/24/95	CHANGED OWNERS PARCEL 52.	GE
9/13/94	CHANGED OWNERS PCLS. E-49 AND 49A.	GE
4/2/94	CHANGED TAKE, REMAIN AND DIMENSIONS FOR PCLS. E-49 AND 49A. DELETED PARCEL 51A.	GE
1/20/94	ADDED CONTROLLED ACCESS LINE.	GE
10/6/93	REVISED TAKE, REMAIN & DIMS. PCL. 51A.	GE
9/3/93	CHANGED NAME PARCELS 51A & 53A.	REB
8/12/93	ADDED CENTERLINE MONUMENTS TO BE SET.	GE
6/16/93	CHANGED NAME PARCEL 47.	GE
6/8/93	CHANGED TAKE, REMAIN AND DIMENSIONS PCL. 51A. ADDED TOP.	GE
2/9/93	CHANGED PARCEL 47 TO A TOTAL TAKE. CHANGED PARCEL 49 TO AN EASEMENT (E-49).	GE



PI "RAMP 3" STA. 67+95.87  
Δ = 4°37'57" RT.  
D = 2°00'00"  
T = 115.87'  
L = 231.62'  
R = 2864.79'

STATE OF ALASKA  
DEPARTMENT OF TRANSPORTATION  
&  
PUBLIC FACILITIES  
RIGHT OF WAY MAP  
ALASKA PROJECT NO.  
**F-I-0A1-5(1)**  
53065  
GLENN HIGHWAY, EKLUTNA TO PARKS HIGHWAY  
PHASE 2

DRAWN	GE	DATE	FEB. 1992	SCALE	1"=100'
CHECKED	REB	DATE	JUNE 1993	SHEET	9 OF 14

W:\Projects\Highways\GLENN\_Highway\53065-GlenntoParks\Closeout\Phase II\epf\close-out\EDITED DWG5\edit add.dwg, 06/08/2011 6:47:13 AM, epljglsd.