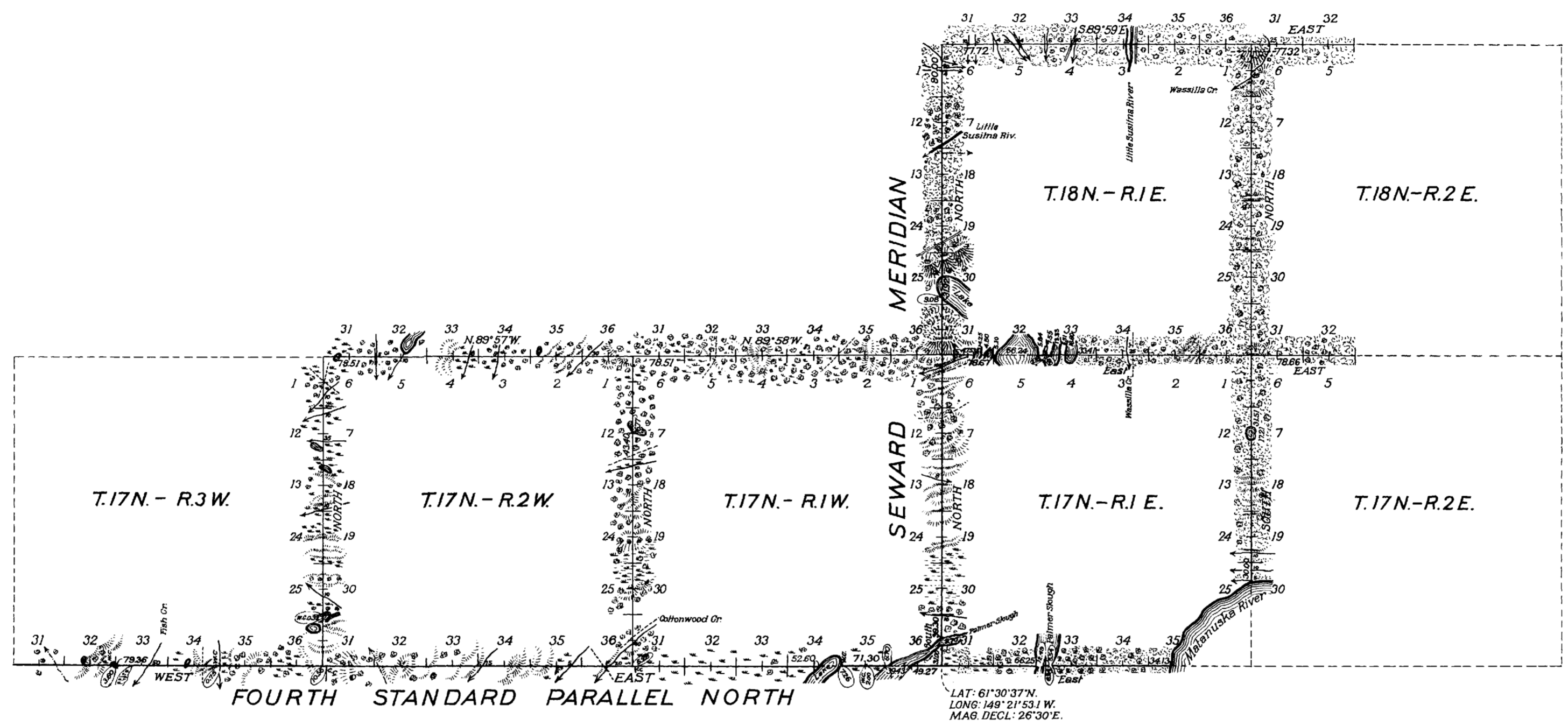


Davidson

TOWNSHIP EXTERIORS

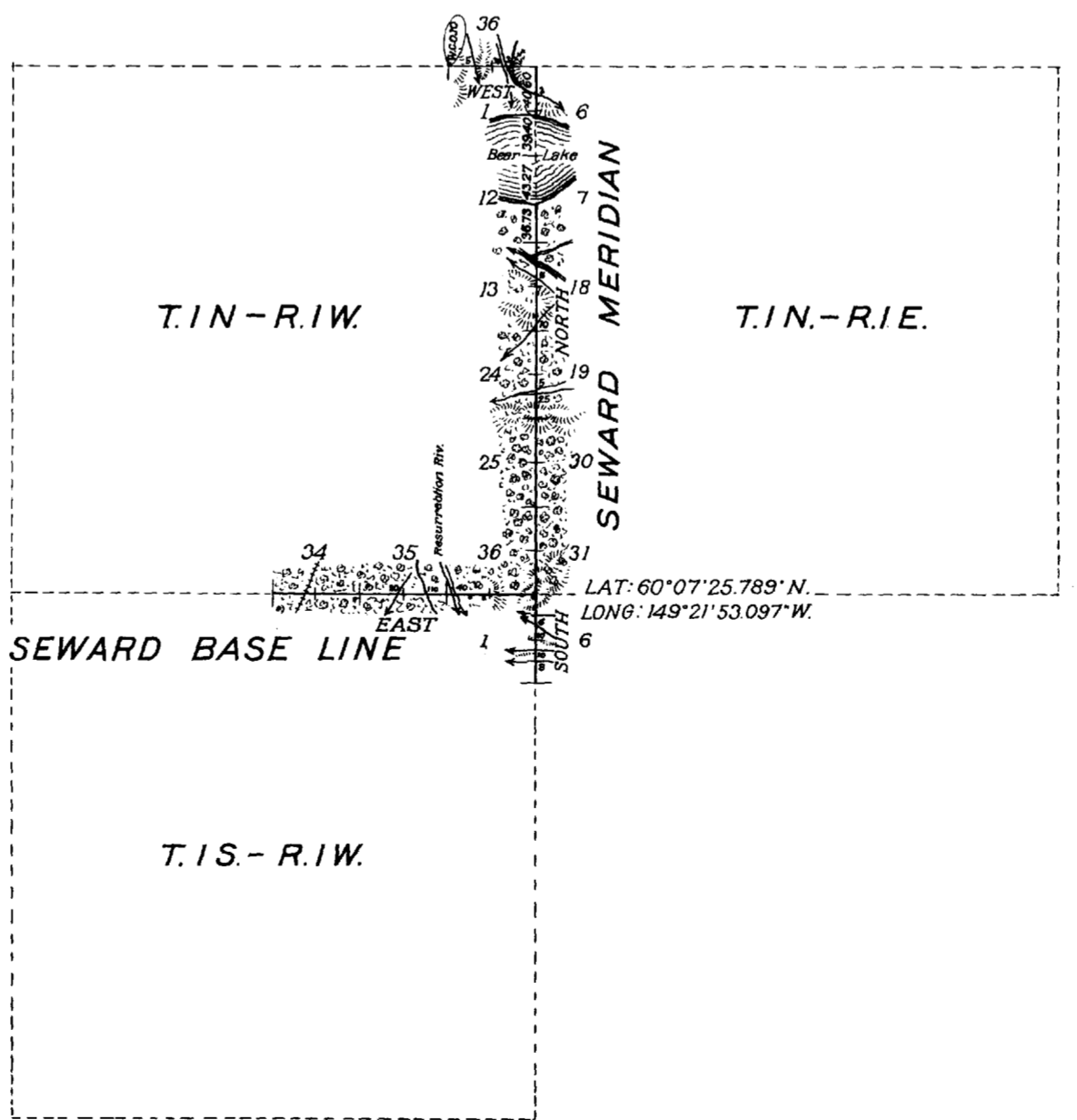
Scale: 1 inch to 160 chains



LAT: 61°30'37" N.
LONG: 149°21'53.1" W.
MAG. DECL: 26°30' E.

Table of Mileage

Surveys designated	Amount			When surveyed
	Mls	Chs	Lks	
Standard lines	44	34	13	May 10, 1911 - Sept. 11, 1913
Township lines	51	19	39	June 16, 1911 - Sept. 17, 1913



LAT: 60°07'25.789" N.
LONG: 149°21'53.097" W.

THIS PLAT

of the
SEWARD BASE LINE through R.1W.
SEWARD MERIDIAN " Ts. 1, 17 & 18 N.
4TH STANDARD PARALLEL N. " Rs. 1, 2, 3 W. & R.1E.
NORTH boundary T.1N.-R.1W.
" & WEST boundaries Ts. 17N.-R.1 & 2W.
" " EAST " T.17N.-R.1E.
" " SOUTH " T.18N.-R.2E.

of the Seward Base and Meridian in the territory of Alaska is strictly conformable to the field notes of the surveys thereof by

John P. Walker U.S.S. and G.G. McDaniel, U.S.T.
under their instructions dated April 11, 1911 and
J. Frank Warner and F.W. Williamson, U.S. Sur.
under their instructions dated May 15, 1912 and
May 31, 1913 which have been examined, approved
and filed in this office.

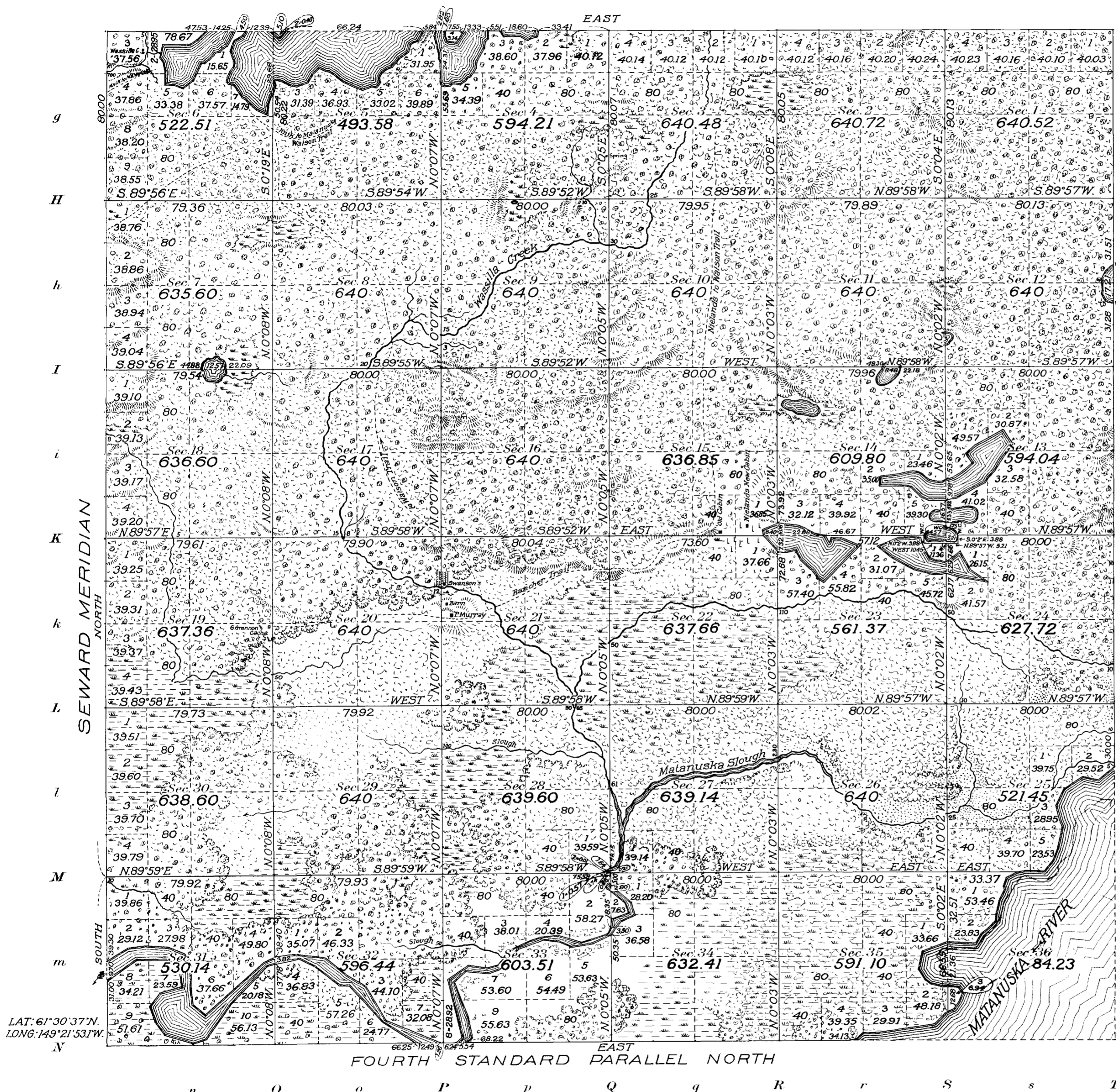
U.S. Surveyor General's Office
Juneau, Alaska, June 11, 1914

Charles E. Davidson
U.S. Surveyor General

(4-675a)

Township N^o 17 North, Range N^o 1 East of the Seward Meridian, Alaska.

G F F E D C b B a A



See Executive Order No. 6957 withdrawing for classification purposes

- T. 17 N., Rs. 1, 2 and 3 E.
- T. 18 N., Rs. 1, 2 and 3 E.
- T. 19 N., Rs. 1 and 2 E.
- T. 17 N., Rs. 1 and 2 W.
- T. 18 N., R. 1 W.

Amended by Executive Orders Nos. 7047, 7416, 8372 and 9022 and Public Land Orders Nos. 79, 149 and 272.

Section 10 of 4

Shore space restoration No. 3, dated March 21, 1921, restored to entry lands surrounding or abutting on lakes in this township.

It does not, however, affect creeks, estuaries or waterways connecting said lakes with the sea, where such connections are or may be runways for sea going fish to and from spawning grounds

Areas in Acres	
Public Land	21,625.64
Indian Reservation	
Indian Allotments	
Mineral Claims	
Water Surface	674.85
Total Area	22,300.49

Scale 40 Chains to an inch
Mean Magnetic Declination 26°20'E

LAT: 61°30'37\"/>

Surveys Designated	By Whom Surveyed	Contract		Amount of Surveys		When Surveyed		
		No.	Date	Mls.	chs.	lks.	When Begun	When Completed
Subdivision	F.W. Williamson, U.S.S.	58	May 31, 1913	58	44	73	July 15, 1913	Sept. 1, 1913
Meanders	T.W. Bates, U.S.T.	22	"	22	28	88	"	"
Township line, North	"	5	"	5	78	67	"	July 23, "
" South	F.W. Williamson, U.S.S.	4	"	4	34	13	"	" 19, "
" East	T.W. Bates, U.S.T.	4	April 11, 1911	4	30		Aug. 9, 1911	Aug. 17, 1911
" West	J. Frank Warner, U.S.S. F. Williamson, U.S.S.	6	May 15, 1912	6	00		July 20, 1912	July 23, 1912

The above map of Township No. 17 NORTH, Range No. 1 EAST of the SEWARD Meridian ALASKA is strictly conformable to the field notes of the survey thereof on file in this office, which have been examined and approved

U. S. Surveyor General's Office.
JUNEAU, ALASKA, January 28, 1915

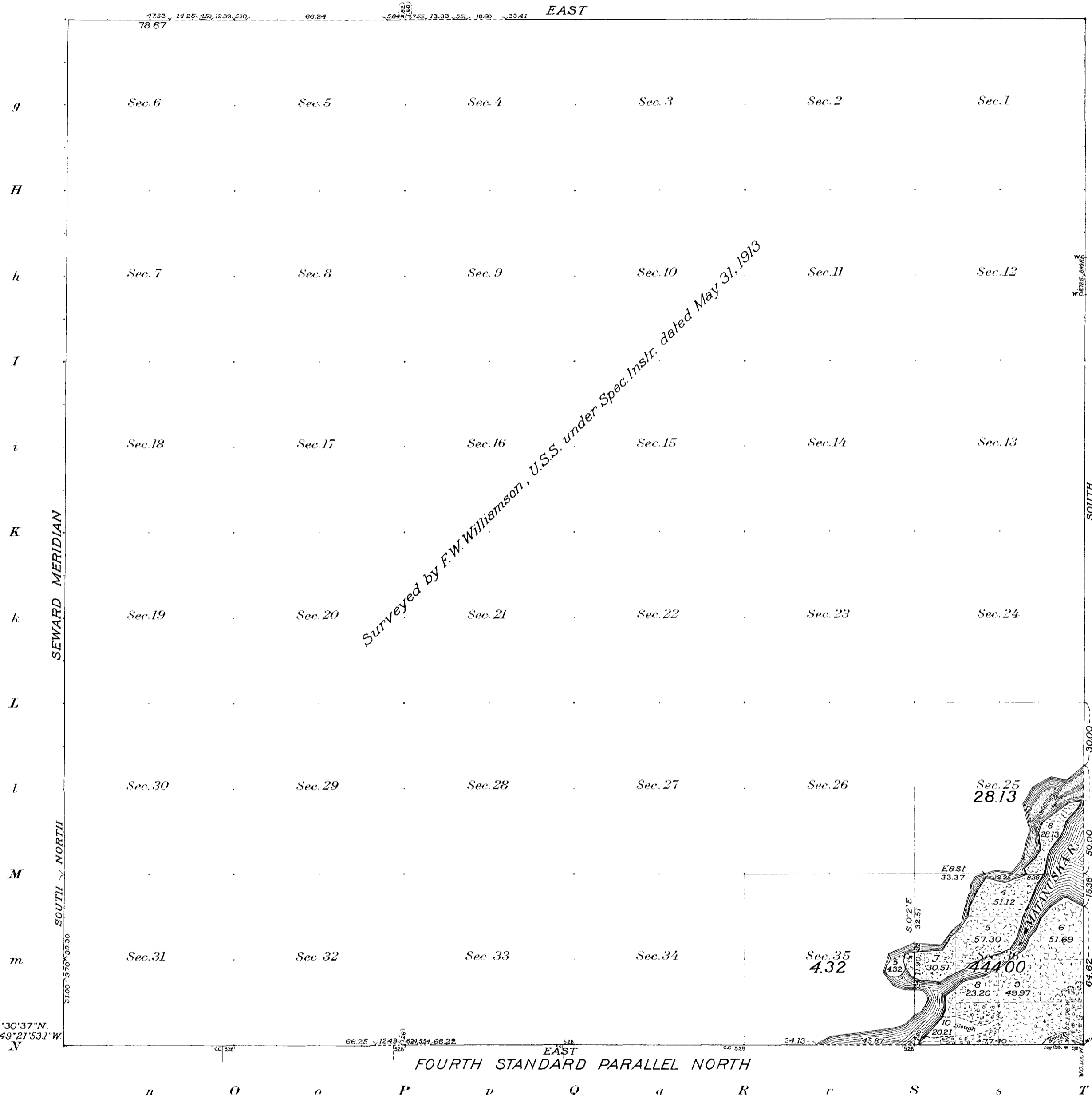
Charles E. Davidson
Surveyor General.

E.T. PAWING
E.T. & E.P.K. CO.

(4-675 a)

Township No 17 North, Range No 1 East of the Seward Meridian, Alaska.

G F E D C B A



Executive Order No. 6957
 Lawing for classification
 17 N., Rs. 1, 2 and 3 E.
 T. 18 N., Rs. 1, 2 and 3 E.
 T. 19 N., Rs. 1 and 2 E.
 T. 17 N., Rs. 1 and 2 W.
 T. 18 N., R. 1 W.

Amended by Executive Orders
 Nos. 7047, 7416, 8372 and 9022
 and Public Land Orders Nos. 79,
 149 and 272.

Shore space restoration No. 3,
 dated March 21, 1921, restored
 to entry lands surrounding or
 abutting on lakes in this town-
 ship.
 It does not, however, affect
 creeks, estuaries or waterways
 connecting said lakes with the
 sea, where such connections are
 or may be runways for sea going
 fish to and from spawning grounds

Areas in Acres	
Public Land	476.45
Indian Reservation	
Indian Allotments	
Mineral Claims	
Water Surface	
Total Area	476.45

Scale 40 Chains to an inch
 Mean Magnetic Declination 28° E.

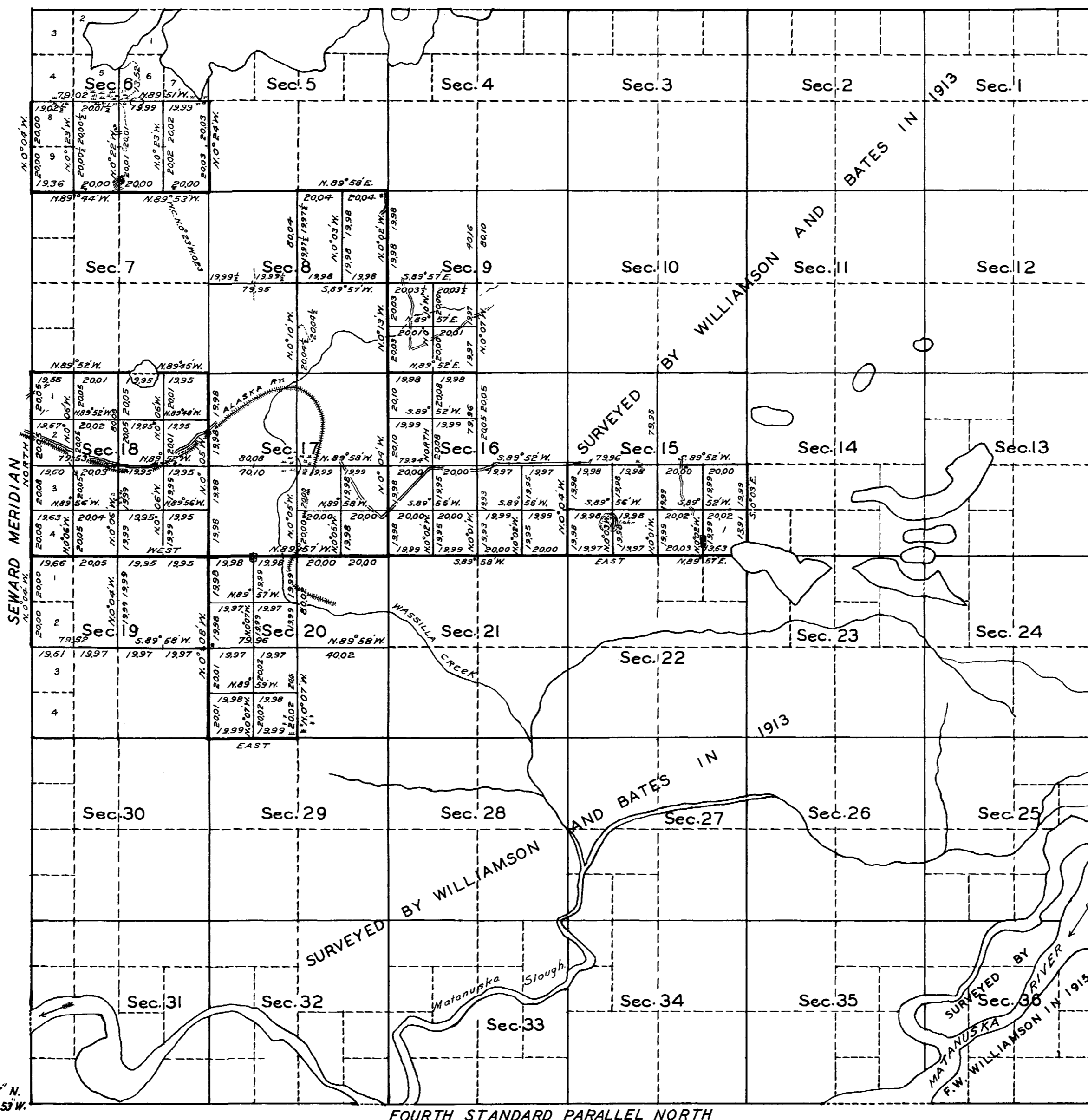
LAT: 61°30'37"N.
 LONG: 149°21'53"W

Surveys Designated	By Whom Surveyed	Group			Amount of Surveys			When Surveyed	
		No.	Date of Instructions		Mts.	chs.	lks.	Begun	Completed
East bdy.	F.W. Williamson, U.S.S.	1	Aug. 9, 1915		30	00		Aug. 20, 1915	Aug. 20, 1915
South bdy. (4 th 31 st Par. N.)	" " "	1	" " "		45	87		" " "	Sept. 15, "
Subdivision	" " "		" " "		48	99		Sept. 17, "	" 19 "
Meanders	" " "		" " "		4	57	99	" " "	" " "

The above map of Township No. 17 North, Range No. 1 East of the Seward Meridian Alaska is strictly conformable to the field notes of the survey thereof on file in this office, which have been examined and approved
 U. S. Surveyor General's Office.
 Juneau, Alaska, August 16, 1916.

Charles E. Davidson
 Surveyor General.

TOWNSHIP No. 17 NORTH, RANGE No. 1 EAST OF THE SEWARD MERIDIAN, ALASKA.



LATITUDE 61° 30' 37" N.
LONGITUDE 149° 21' 53" W.

SCALE: 40 CHAINS TO AN INCH

MEAN MAGNETIC DECLINATION 28° 00' E.

LINES DESIGNATED	BY WHOM SURVEYED	GROUP		MILEAGE		WHEN SURVEYED	
		No.	DATE	MLS.	GHS.	BEGUN	COMPLETED
EXTERIOR OF SECTIONS	FLOYD G. BETTS, U.S.G.E.	50	APRIL 11, 1935	14	25.27	APRIL 26, 1935	SEPT. 14, 1935
SUBDIVISION OF SECTIONS	" " "	"	" " "	30	6.75	" " "	" " "

Office of THE Supervisor of Surveys
Denver, Colorado, May 6, 1937
The above plat of Township No. 17 North, Range No. 1 East of the Seward Meridian, Alaska is strictly conformable to the field notes of the survey thereof which have been examined and approved.

Wm. H. Dorman
Supervisor of Surveys

UNITED STATES
DEPARTMENT OF THE INTERIOR
GENERAL LAND OFFICE
Washington, D. C., FEBRUARY 11, 1938.
The survey represented by this plat having been correctly executed in accordance with the requirements of law and the regulations of this office, is hereby accepted.

Antoinette F. ...
Assistant Commissioner

See Executive Order No. 6957 withdrawing for classification purposes

- T. 17 N., Rs. 1, 2 and 3 E.
- T. 18 N., Rs. 1, 2 and 3 E.
- T. 19 N., Rs. 1 and 2 E.
- T. 17 N., Rs. 1 and 2 W.
- T. 18 N., R. 1 W.

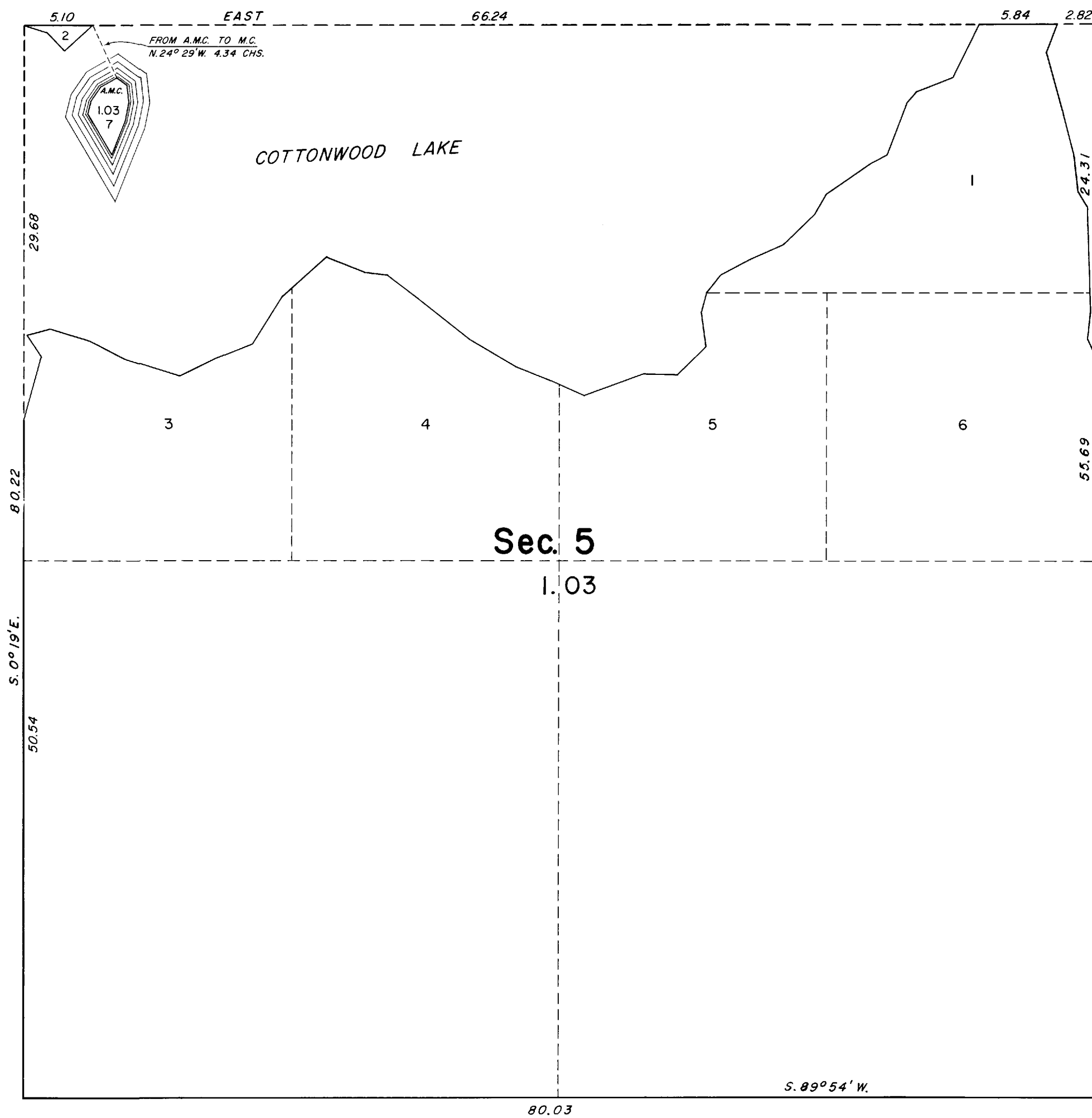
Amended by Executive Orders Nos. 7017, 7416, 8372 and 9022 and Public Land Orders Nos. 79, 119 and 272.

Shore space restoration No. 3, dated March 21, 1921, restored to entry lands surrounding or abutting on lakes in this township.

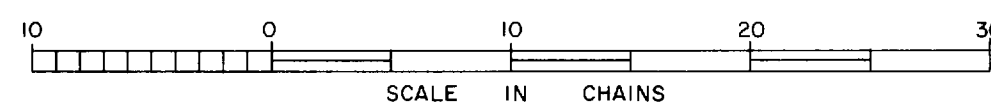
It does not, however, affect creeks, estuaries or waterways connecting said lakes with the sea, where such connections are or may be runways for sea going fish to and from spawning grounds

TOWNSHIP 17 NORTH, RANGE 1 EAST, OF THE SEWARD MERIDIAN, ALASKA

SURVEY OF OMITTED ISLAND IN SECTION 5



Area Surveyed: 1.03 Acres



The boundaries, subdivisional and meander lines of the township were surveyed by J. Frank Warner, F.W. Williamson, T.W. Bates, and J.P. Walker from August, 1911, to September, 1915. A portion of the subdivisional lines was resurveyed and subdivision of sections surveyed by Floyd G. Betts from April to September, 1935.

Survey of the omitted island delineated on this plat executed by Hobart B. Hyatt, June 6, 1962, under supplemental special instructions dated April 11, 1962, for Group 50, Alaska.

UNITED STATES DEPARTMENT OF THE INTERIOR
BUREAU OF LAND MANAGEMENT
Washington, D.C. April 8, 1963

This plat is strictly conformable to the approved field notes, and the survey, having been correctly executed in accordance with the requirements of law and the regulations of this Bureau, is hereby accepted.

For the Director

Chief, Division of Engineering

TOWNSHIP 17 NORTH, RANGE 1 EAST, OF THE SEWARD MERIDIAN, ALASKA
SURVEY OF AN OMITTED ISLAND IN SECTION 5

The history of previous surveys is contained in the field note record.

This plat and the field notes represent the survey of an omitted island in Section 5, Township 17 North, Range 1 East, Seward Meridian, Alaska.

This survey was executed by Joseph P. Burns, Cadastral Surveyor, April 12 1996, in accordance with the specifications set forth in the Manual of Surveying Instructions, 1973, Supplemental Special Instructions for Group No. 50, Alaska, dated March 25, 1996, approved April 2, 1996, and Assignment Instructions dated April 10, 1996.

COTTONWOOD LAKE

COTTONWOOD LAKE

T 18 N R 1 E
S32
S5 MC
T 17 N
1913

N. 74° 45' W.
21.37
From WCAMC to MC

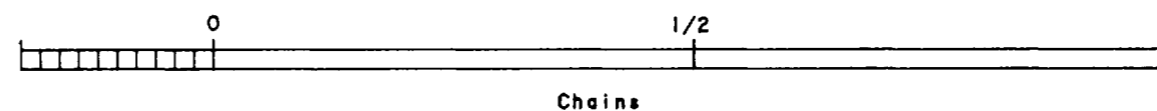
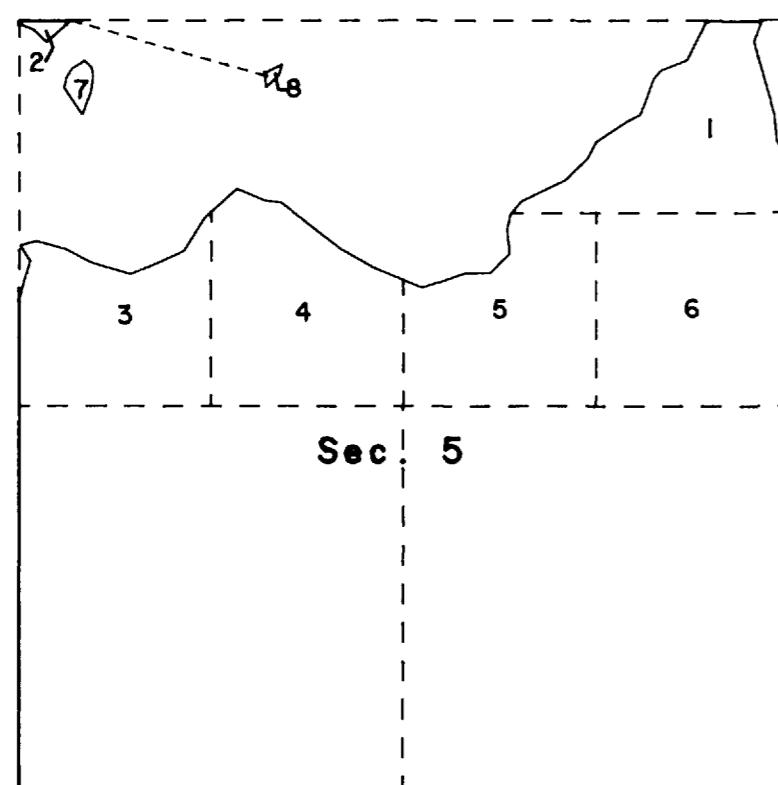
WCAMC S. 14° 41' E. 0.23

8
0.14

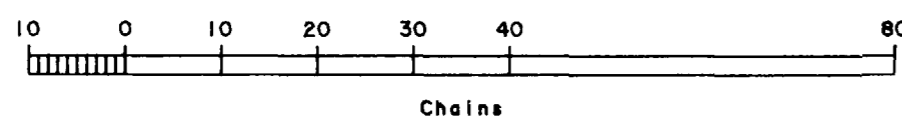


Mean Magnetic Declination 27° E.

VICINITY DIAGRAM



Area Surveyed: 0.14 acres



Acceptance of this survey does not purport to transfer any interest in submerged lands to which the State of Alaska is entitled under the Equal Footing Doctrine and Section 6(m) of the Alaska Statehood Act, P.L. 85-508, notwithstanding the use, location, or absence of meander lines to depict water bodies.

UNITED STATES DEPARTMENT OF THE INTERIOR
BUREAU OF LAND MANAGEMENT
Anchorage, Alaska

This plat is strictly conformable to the approved field notes, and the survey, having been correctly executed in accordance with the requirements of law and the regulations of this Bureau, is hereby accepted.

For the Director

Joseph P. Pinkerton June 26, 1996
Deputy State Director for Cadastral Survey, Alaska
Acting

Plot Sheet 51-15
Anch C-6

JPB