

OPEN
SW 1/4 of NW 1/4 - SEC. 16

JAMES JOHNSON
TRACT # 22
SE 1/4 of NW 1/4 - SEC. 16 - T17N-R1E

WINCHESTER
SW 1/4 of NE 1/4 - SEC. 16

OPEN
TRACT # 23
NW 1/4 of SW 1/4 - SEC. 16 - T17N-R2E

FRED LARSON
TRACT # 24
NE 1/4 of SW 1/4 - SEC. 16 - T17N-R1E

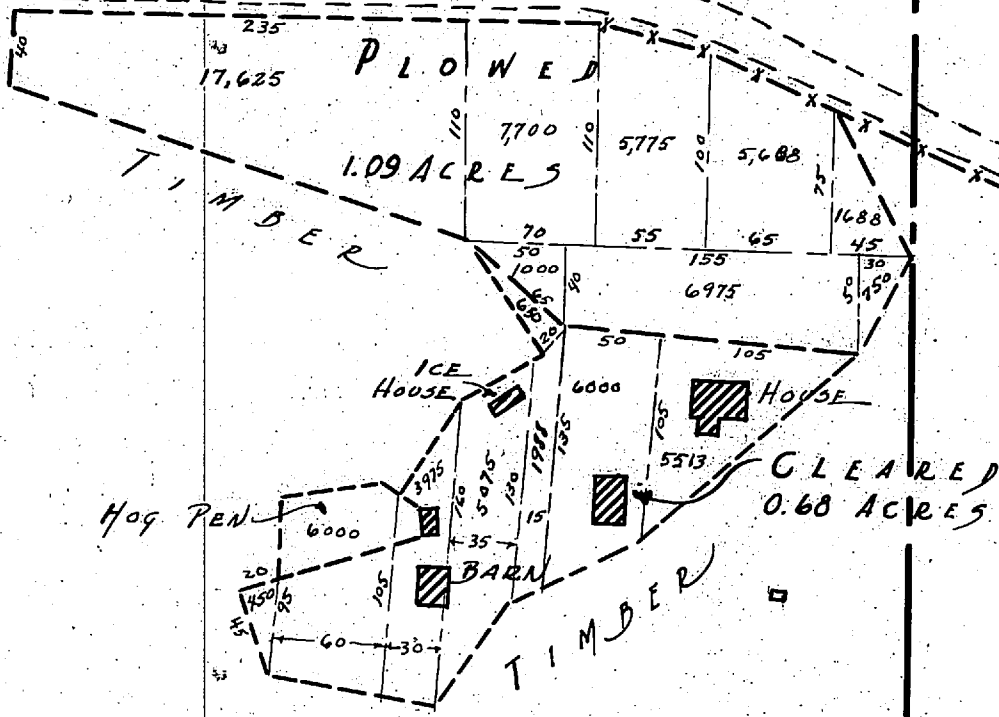
OTTO NELSON
TRACT # 27
NW 1/4 of SE 1/4 - SEC. 16 - T17N-R1E

OPEN
TRACT # 25
SW 1/4 of SW 1/4 - SEC. 16

JOHN CHURCH
TRACT # 26
SE 1/4 of SW 1/4 - SEC. 16 - T17N-R1E

H. JENSON
TRACT # 29
SW 1/4 of SE 1/4 - SEC. 16

WASSILLA - MATTAN'S BLA... ROAD



Original Survey Sept. 12, 1936
Scale 1"=100'

IMPROVEMENTS ON TRACT # 24

SURVEYED Sept. 12, 1936	ACRES UNDER-BRUSHED	ACRES FELL-TREES REMOVED	ACRES STUMPED	ACRES CLEANED UP	ACRES FLOWED	ACRES AFTER PLOWING	ACRES CROPPED	ACRES GARDEN	ACRES	LINEAR FEET FENCE	TOTALS	REMARKS	
										BARB WOVEN POLE	LAND FENCE		
			0.68		1.09					240'	1.77	2.40	