

STATE OF ALASKA
DEPARTMENT OF TRANSPORTATION
&
PUBLIC FACILITIES

LATEST REVISION 12/14/11

LOCATIONS SURVEYOR'S CERTIFICATE

I HEREBY CERTIFY THAT I AM PROPERLY REGISTERED AND LICENSED TO PRACTICE LAND SURVEYING IN THE STATE OF ALASKA. THAT MONUMENTS SHOWN HEREON WERE RECOVERED BY ME OR UNDER MY SUPERVISION AND EXIST AS DESCRIBED.

LARRY S. DURFEE LS-11297 Date



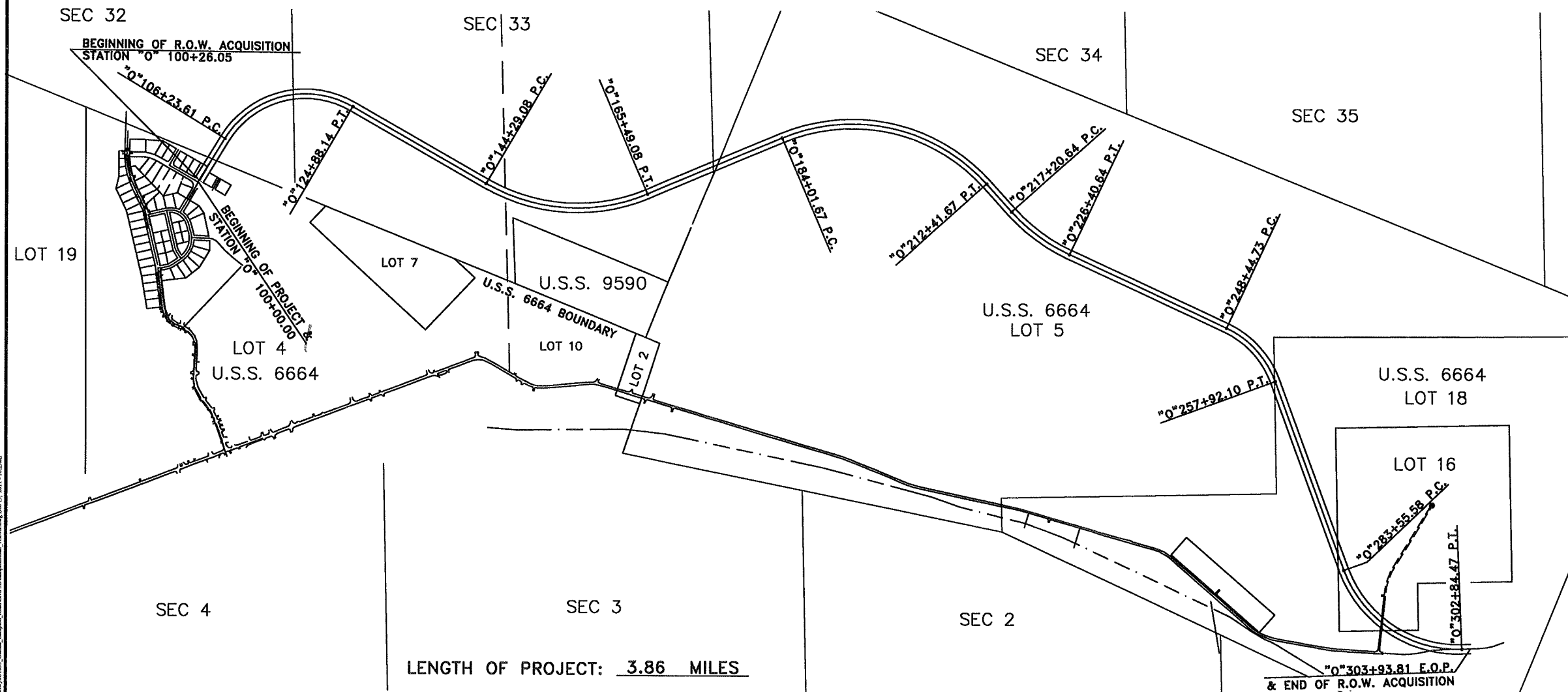
RIGHT OF WAY MAP
STP-0002(146)/61653
GALENA CAMPION ROAD
EROSION PROTECTION

WITHIN T8S, R10E
SECTIONS 32,33,34&35
KATEEL RIVER MERIDIAN
&
WITHIN T9S, R10E
SECTION 1
KATEEL RIVER MERIDIAN
NULATO RECORDING DISTRICT
STATE BUSINESS, NO CHARGE

RIGHT OF WAY SURVEYOR'S CERTIFICATE

I HEREBY CERTIFY THAT I AM PROPERLY REGISTERED AND LICENSED TO PRACTICE LAND SURVEYING IN THE STATE OF ALASKA, AND THAT THIS PLAT WAS MADE BY ME OR UNDER MY SUPERVISION. I DECLARE THAT THIS PLAT IS BASED ON INFORMATION COMPILED FROM RECORD DATA AND CONTROLLED BY RECOVERED MONUMENTATION AND THAT ALL DIMENSIONS AND OTHER DETAILS ARE ACCURATE.

MARTIN D. SHURR LS-9105 Date



LENGTH OF PROJECT: 3.86 MILES

STATE OF ALASKA
DEPARTMENT OF TRANSPORTATION
AND PUBLIC FACILITIES
APPROVED _____

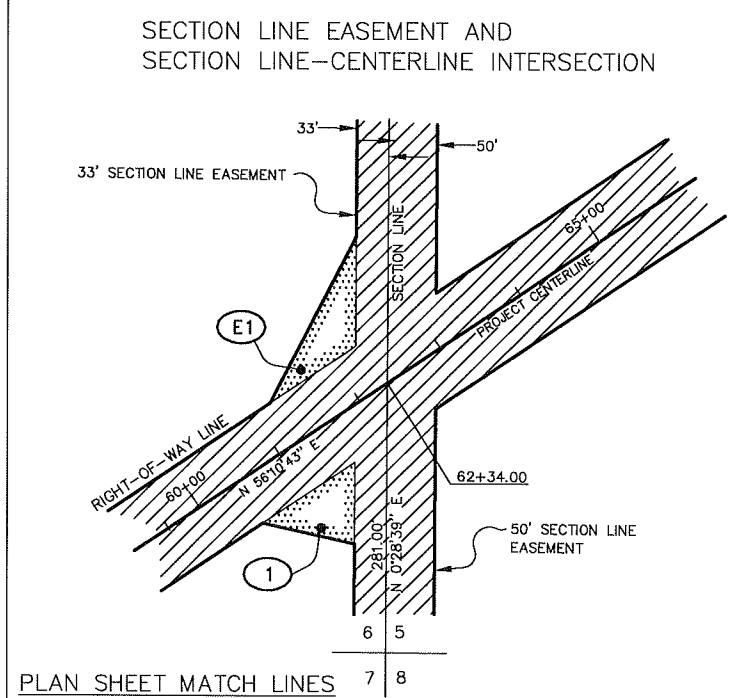
CHIEF RIGHT OF WAY AGENT,
NORTHERN REGION

BLM MONUMENT	⊗
GLO MONUMENT	⊕
USC&GS OR NGS MONUMENT	⊙
PRIMARY MONUMENT	⊗
ROW CENTERLINE MONUMENT IN CASING	⊕
ROW CENTERLINE MONUMENT	⊕
BEARING OBJECT	✱
MISCELLANEOUS MONUMENT	⊗
LINE OF SIGHT MONUMENT	⊕
4 X 4 CONCRETE MONUMENT	⊕
SURVEY PANEL POINT	✱
SURVEY CONTROL MONUMENT	⊕
REBAR AND CAP	⊙
REBAR	•
IRON PIPE	●
PK NAIL	▽
SPIKE	×
HUB AND TACK	⊕
CENTERLINE CALCULATED POINT, NOT SET	⊕
INTERNATIONAL BOUNDARY LINE	ALASKA CANADA
TOWNSHIP & RANGE LINE	T. 2 N. T. 1 N.
SECTION LINE	—
1/4 SECTION LINE	—
1/16 SECTION LINE	—

HWY MILEPOST	1
EXISTING RIGHT- OF - WAY	▨
RIGHT - OF - WAY REQUIRED	▨
STATION EQUATION	"L" 10+00.00 P.O.T. BK= "O" 10+00.00 P.C AHD
PROJECT CENTERLINE	5+00
EXISTING CENTERLINE	—
RAILROAD CENTERLINE	—
PROJECT RIGHT- OF - WAY LINE	—
EXISTING PROPERTY LINE	—
CONTROLLED ACCESS LINE	—
PERMIT LINE	—
EXISTING EASEMENT LINE	---
PROPOSED EASEMENT LINE	---
LIMIT OF CUT SLOPE	---
LIMIT OF FILL SLOPE	---
EXISTING FENCE	---
EXISTING GUARD RAIL	---
EXISTING TOPOGRAPHY	---
WATER BOUNDARY	---
MARSH	---
OHW LINE	---
MEANDER LINE	M1 M2 M3
EASEMENT ACQUISITION	(E1)
FEE ACQUISITION	(1)

SANITARY SEWER	----
OIL	----
GAS	----
WATER	----
STORM DRAIN	----
U.G. UTILITY	---UG---
RISER	○
STORM DRAIN MANHOLE	⊕
MANHOLE	⊕MH
FIRE HYDRANT	⊕
CULVERT PIPE	—
POWER POLE	□
SIGNAL POLE W/ MAST ARM	○
LUMINAIRE	⊕
POLE ANCHOR	⊕
TELEPHONE PEDESTAL	⊕

SIGN 1 POST	⊕
SIGN 2 POST	⊕
SIGN 3 POST	⊕
POST	•
SANITARY CLEAN OUT	⊕
SEPTIC VENT	⊕
SATELLITE DISH	⊕ SAT. DISH
TEST HOLE	⊕
EVERGREEN TREE	⊕
BROADLEAF TREE	⊕



LINE	LINE
MATCH 10+00.00	MATCH SHEET 5

DATE	REVISION	BY

STATE OF ALASKA
DEPARTMENT OF TRANSPORTATION
AND
PUBLIC FACILITIES
RIGHT OF WAY MAP
ALASKA PROJECT NO.
STP-0002(146)/61653
GALENA CAMPION ROAD
EROSION PROTECTION
SCALE: 1" = N.T.S. SHEET 2 OF 12

K:\Eng\Hwy\61653_Galena_Campion_Road\Civil 3D\CampionRoad_2.dwg Dec 19, 2011 - 10:35am

SEC 32

SEC 33

SEC 34

T8,93, R10E
 N4M
 SEC 32,33,34
 SEC 2,3,4

SHEET 5

BEGINNING OF R.O.W. ACQUISITION
 STATION "0" 100+26.05

U.S.S. 6664
 LOT 5

BEGINNING OF PROJECT
 STATION "0" 100+00.00

"0"106+23.61 P.C.

"0"124+88.14 P.T.

"0"144+29.08 P.C.

"0"165+49.08 P.T.

"0"184+01.67 P.C.

"0"212+41.67 P.T.

SHEET 7

LOT 19

LOT 7

SHEET 6

U.S.S. 9590

U.S.S. 6664
 LOT 5

SHEET 8

LOT 4

U.S.S. 6664

LOT 10

LOT 2

SEC 4

SEC 3

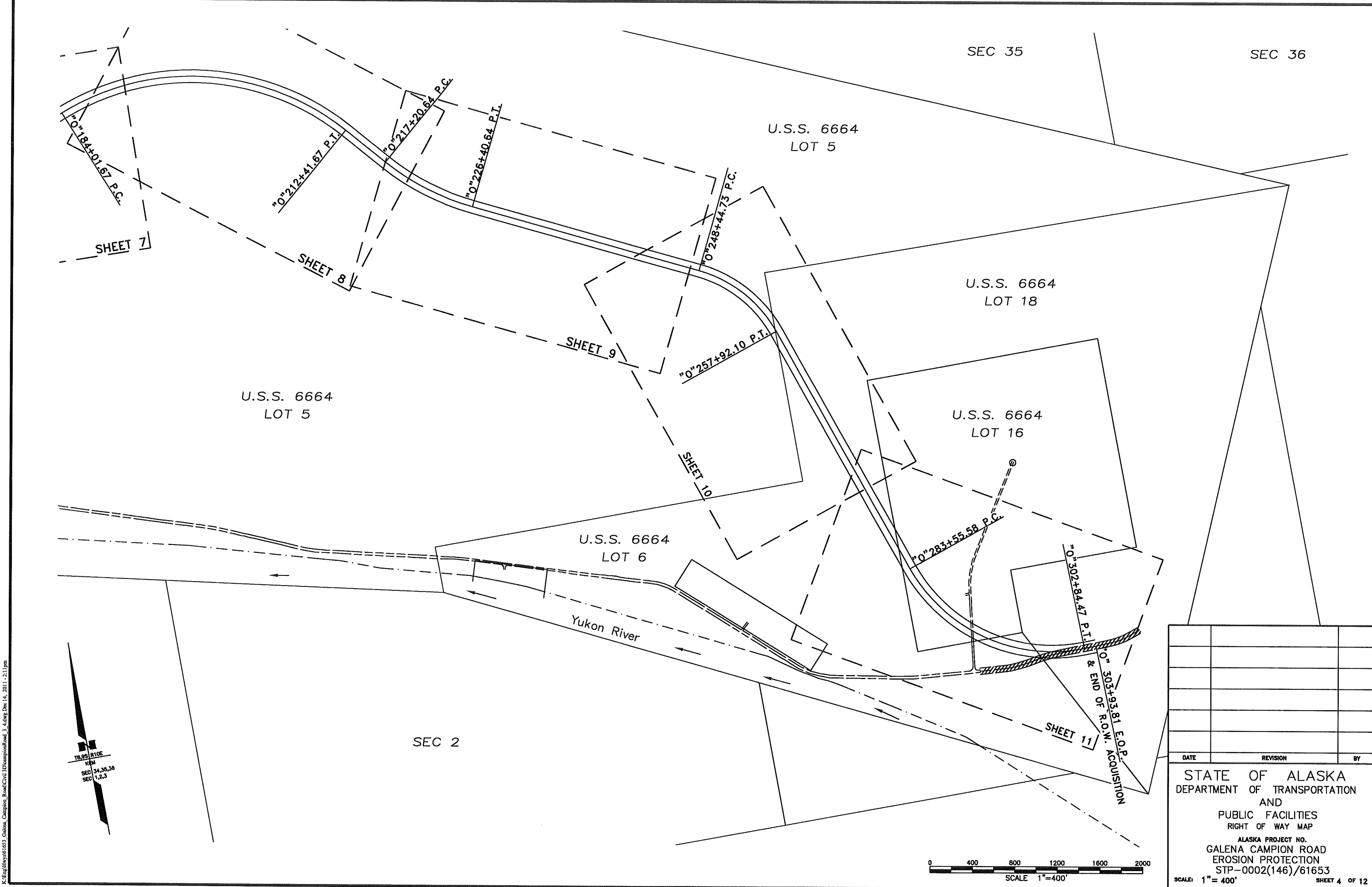
DATE	REVISION	BY

STATE OF ALASKA
 DEPARTMENT OF TRANSPORTATION
 AND
 PUBLIC FACILITIES
 RIGHT OF WAY MAP
 ALASKA PROJECT NO.
 GALENA CAMPION ROAD
 EROSION PROTECTION
 STP-0002(146)/61653



SCALE: 1" = 400' SHEET 3 OF 12

K:\Eng\Bvms\61653_Galena_Campion_Road\Civil\3D\CampionRoad_3_4.dwg Dec-19, 2011 - 10:50am



SEC 35

SEC 36

U.S.S. 6664
LOT 5

U.S.S. 6664
LOT 18

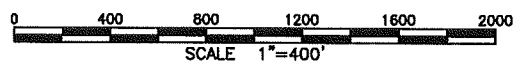
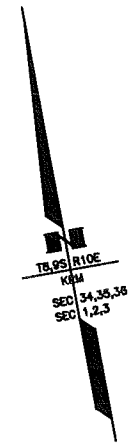
U.S.S. 6664
LOT 5

U.S.S. 6664
LOT 16

U.S.S. 6664
LOT 6

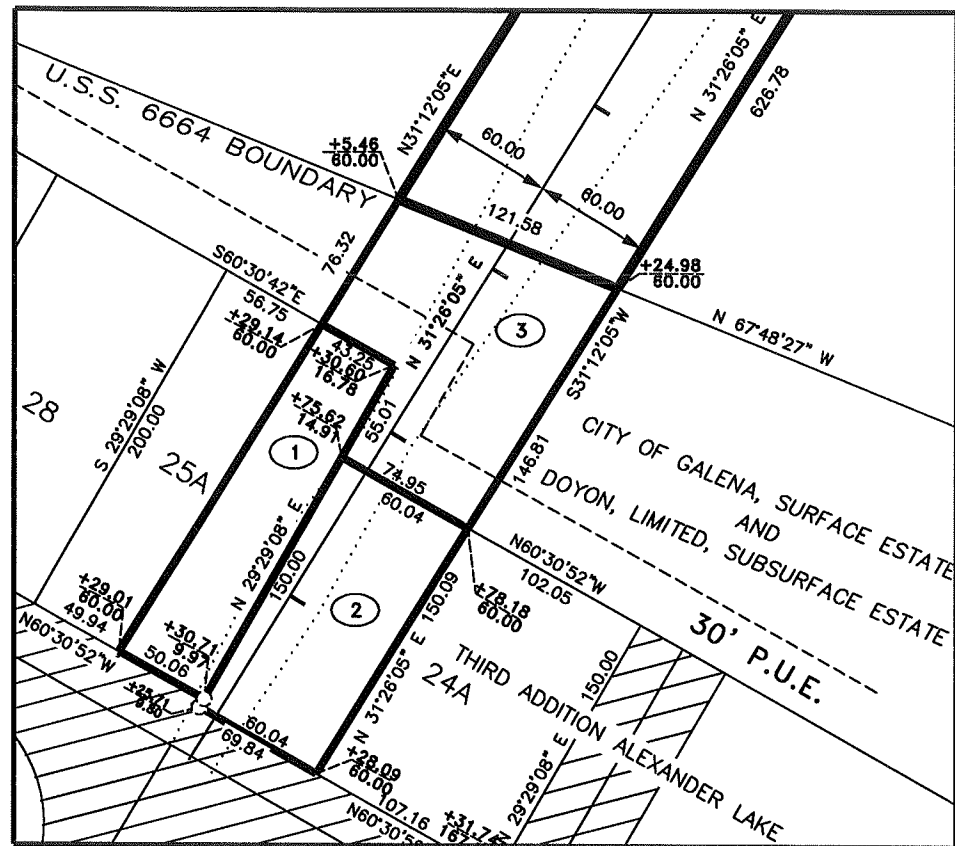
Yukon River

SEC 2



STATE OF ALASKA
DEPARTMENT OF TRANSPORTATION
AND
PUBLIC FACILITIES
RIGHT OF WAY MAP
ALASKA PROJECT NO.
GALENA CAMPION ROAD
EROSION PROTECTION
STP-0002(146)/61653
SCALE: 1" = 400'

K:\Eng\hwy\61653_Galena_Campion_Road\Civil\3D\CampionRoad_3_4.dwg Dec 14, 2011 - 2:11pm



DETAIL "A"
SCALE: 1" = 50'

CURVE DATA				
CD	DELTA	RADIUS	LENGTH	TANGENT
(A)	51°25'48"	1266.23'	1136.60'	609.80'
(B)	50°48'45"	1146.23'	1016.53'	544.42'
(C)	37°08'07"	1266.23'	820.68'	425.33'
(D)	37°45'10"	1146.23'	755.26'	391.91'

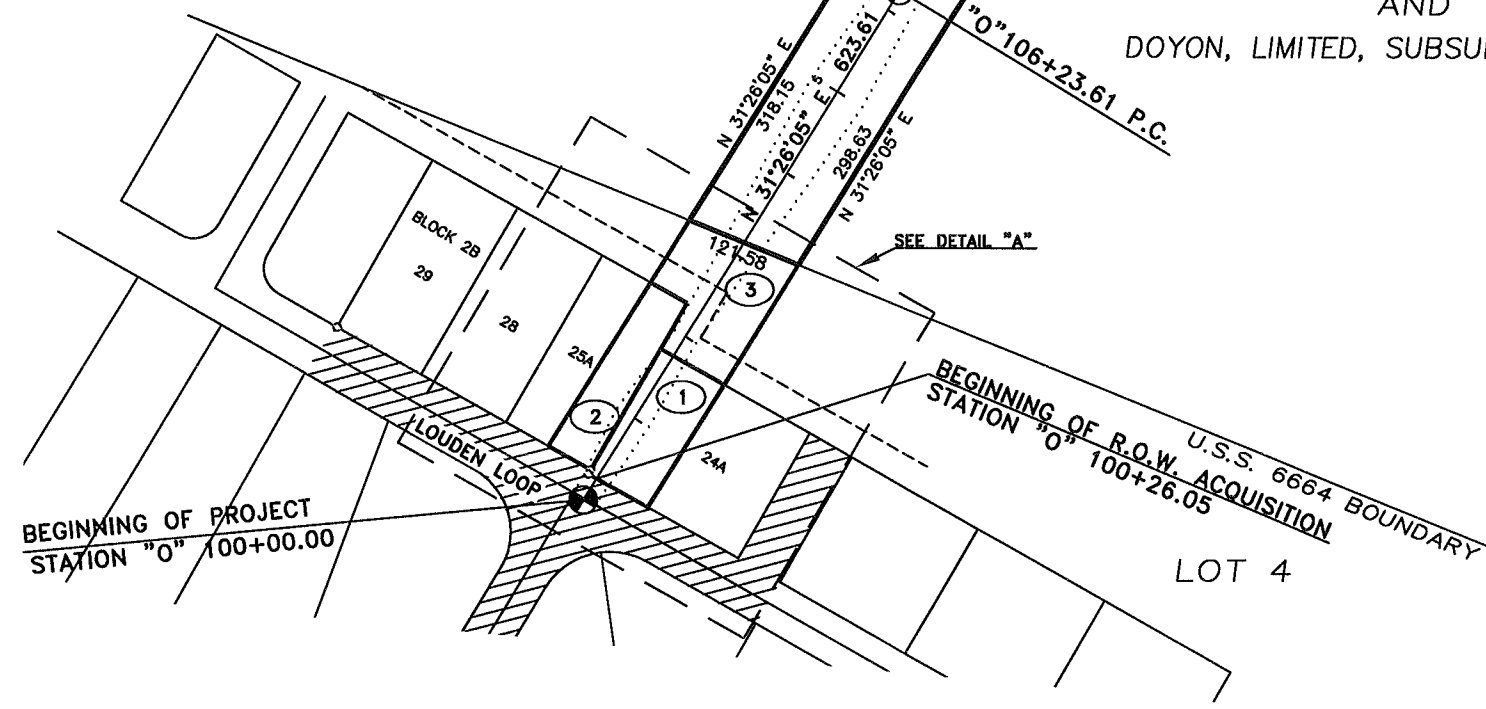
CITY OF GALENA, SURFACE ESTATE
AND
DOYON, LIMITED, SUBSURFACE ESTATE

CITY OF GALENA, SURFACE ESTATE
AND
DOYON, LIMITED, SUBSURFACE ESTATE

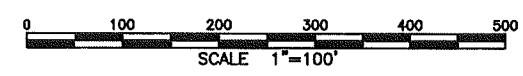
CITY OF GALENA, SURFACE ESTATE
AND
DOYON, LIMITED, SUBSURFACE ESTATE

CITY OF GALENA, SURFACE ESTATE
AND
DOYON, LIMITED, SUBSURFACE ESTATE

BOOK 10, PAGE 888



"O" LINE
D = 88°33'55"
R = 1206.23'
L = 1864.53'
T = 1176.39'



DATE	REVISION	BY

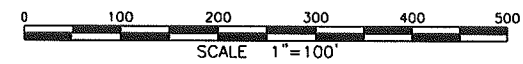
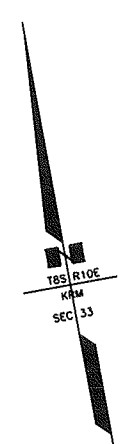
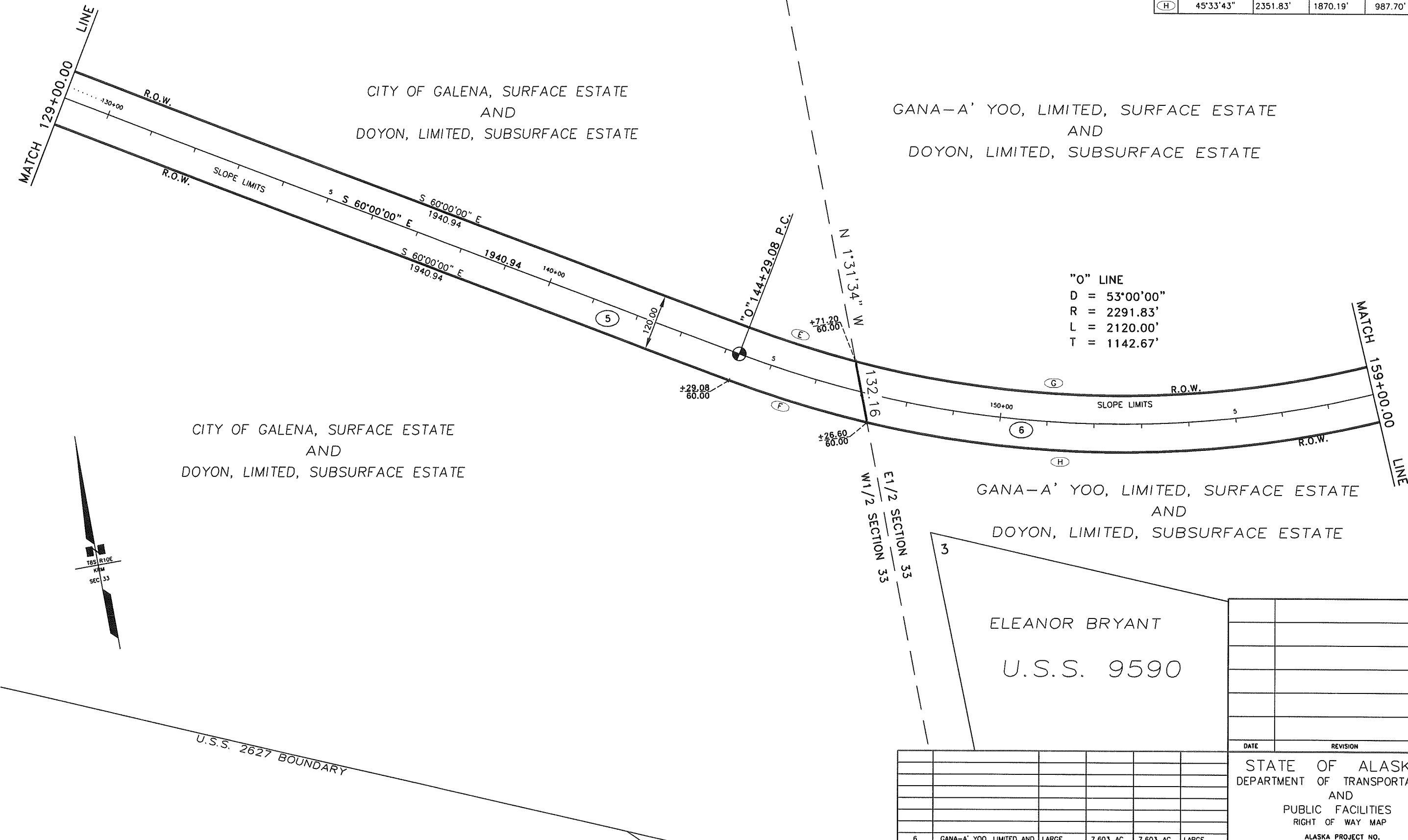
PARCEL NUMBER	OWNER(S)	LARGER PARCEL	ACQUISITION INCL. EXISTING EASEMENTS	NET ACQUISITION	REMAINDER
5	CITY OF GALENA/DOYON, LTD	LARGE	8,263 AC	8,263 AC	LARGE
4	CITY OF GALENA/DOYON, LTD	LARGE	3,815 AC	3,815 AC	LARGE
3	CITY OF GALENA/DOYON, LTD	LARGE	14,260 S.F.	9,063 S.F.	LARGE
2	CITY OF GALENA/DOYON, LTD	20,000 SF	9,331 S.F.	9,331 S.F.	10,669 S.F.
1	CITY OF GALENA/DOYON, LTD	26,550 SF	10,860 S.F.	10,860 S.F.	16,000 S.F.

STATE OF ALASKA
DEPARTMENT OF TRANSPORTATION
AND
PUBLIC FACILITIES
RIGHT OF WAY MAP
ALASKA PROJECT NO.
GALENA CAMPION ROAD
EROSION PROTECTION
STP-0002(146)/61653
SCALE: 1" = 100' SHEET 5 OF 12

K:\Engineering\61653_Galena_Campion_Road\Civil3D\CampionRoad_512.dwg Dec-20, 2011, 1:35pm

CURVE DATA

CD	DELTA	RADIUS	LENGTH	TANGENT
(E)	6°03'11"	2231.83'	235.78'	118.00'
(F)	7°26'17"	2351.83'	305.31'	152.87'
(G)	46°56'49"	2231.83'	1828.71'	969.20'
(H)	45°33'43"	2351.83'	1870.19'	987.70'



PARCEL NUMBER	OWNER(S)	LARGER PARCEL	ACQUISITION INCL. EXISTING EASEMENTS	NET ACQUISITION	REMAINDER
6	GANA-A' YOO, LIMITED AND DOYON, LIMITED	LARGE	7.603 AC	7.603 AC	LARGE
5	CITY OF GALENA/DOYON, LTD	LARGE	8.263 AC	8.263 AC	LARGE

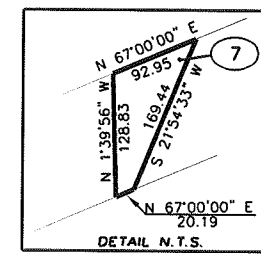
DATE	REVISION	BY

STATE OF ALASKA
 DEPARTMENT OF TRANSPORTATION
 AND
 PUBLIC FACILITIES
 RIGHT OF WAY MAP
 ALASKA PROJECT NO.
 GALENA CAMPION ROAD
 EROSION PROTECTION
 STP-0002(146)/61653
 SCALE: 1" = 100'

K:\Eng\Drawings\61653 - Galena - Campion Road\Civil\31\CampionRoad_5-12.dwg Dec 14, 2011 - 2:23pm

GANA-A' YOO, LIMITED, SURFACE ESTATE
AND
DOYON, LIMITED, SUBSURFACE ESTATE
U.S.S. 6664
LOT 5

GANA-A' YOO, LIMITED, SURFACE ESTATE
AND
DOYON, LIMITED, SUBSURFACE ESTATE



"O" LINE
D = 53°00'00"
R = 2291.83'
L = 2120.00'
T = 1142.67'

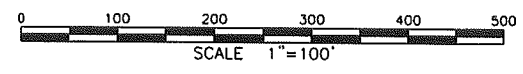
"O" LINE
D = 71°00'00"
R = 2291.83'
L = 2840.00'
T = 1634.75'

MATCH 159+00.00
LINE

MATCH 190+00.00
LINE

CURVE DATA

C#	DELTA	RADIUS	LENGTH	TANGENT
G	46°56'49"	2231.83'	1828.71'	969.20'
H	45°33'43"	2351.83'	1870.19'	987.70'
I	71°00'00"	2351.83'	2914.35'	1677.55'
J	71°00'00"	2231.83'	2765.65'	1591.95'



GANA-A' YOO, LIMITED, SURFACE ESTATE
AND
DOYON, LIMITED, SUBSURFACE ESTATE
U.S.S. 6664
LOT 5

GANA-A' YOO, LIMITED, SURFACE ESTATE
AND
DOYON, LIMITED, SUBSURFACE ESTATE

PARCEL NUMBER	OWNER(S)	LARGER PARCEL	ACQUISITION INCL. EXISTING EASEMENTS	NET ACQUISITION	REMAINDER
8	GANA-A' YOO, LIMITED AND DOYON, LIMITED	LARGE	22,750 AC.	22,750 AC.	LARGE
7	GANA-A' YOO, LIMITED AND DOYON, LIMITED	LARGE	6,788 S.F.	6,788 S.F.	LARGE
6	GANA-A' YOO, LIMITED AND DOYON, LIMITED	LARGE	7,603 AC.	7,603 AC.	LARGE

DATE	REVISION	BY

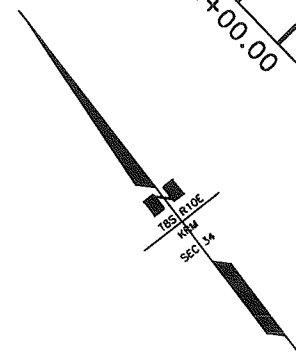
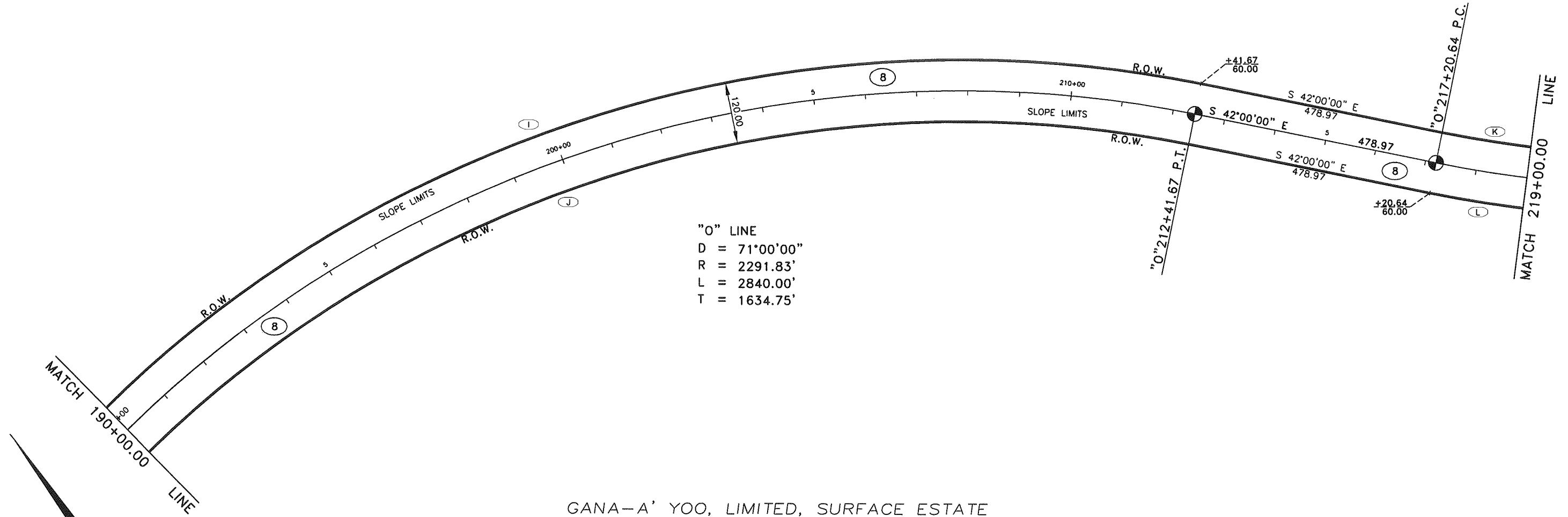
STATE OF ALASKA
DEPARTMENT OF TRANSPORTATION
AND
PUBLIC FACILITIES
RIGHT OF WAY MAP
ALASKA PROJECT NO.
GALENA CAMPION ROAD
EROSION PROTECTION
STP-0002(146)/61653
SCALE: 1" = 100'
SHEET 7 OF 12

GANA-A' YOO, LIMITED, SURFACE ESTATE
 AND
 DOYON, LIMITED, SUBSURFACE ESTATE
 U.S.S. 6664
 LOT 5

"O" LINE
 D = 23°00'00"
 R = 2291.83'
 L = 920.00'
 T = 466.28'

"O" LINE
 D = 71°00'00"
 R = 2291.83'
 L = 2840.00'
 T = 1634.75'

GANA-A' YOO, LIMITED, SURFACE ESTATE
 AND
 DOYON, LIMITED, SUBSURFACE ESTATE
 U.S.S. 6664
 LOT 5



CURVE DATA

CH	DELTA	RADIUS	LENGTH	TANGENT
I	71°00'00"	2351.83'	2914.35'	1677.55'
J	71°00'00"	2231.83'	2765.65'	1591.95'
K	23°00'00"	2231.83'	895.91'	454.07'
L	23°00'00"	2351.83'	944.09'	478.49'



DATE	REVISION	BY

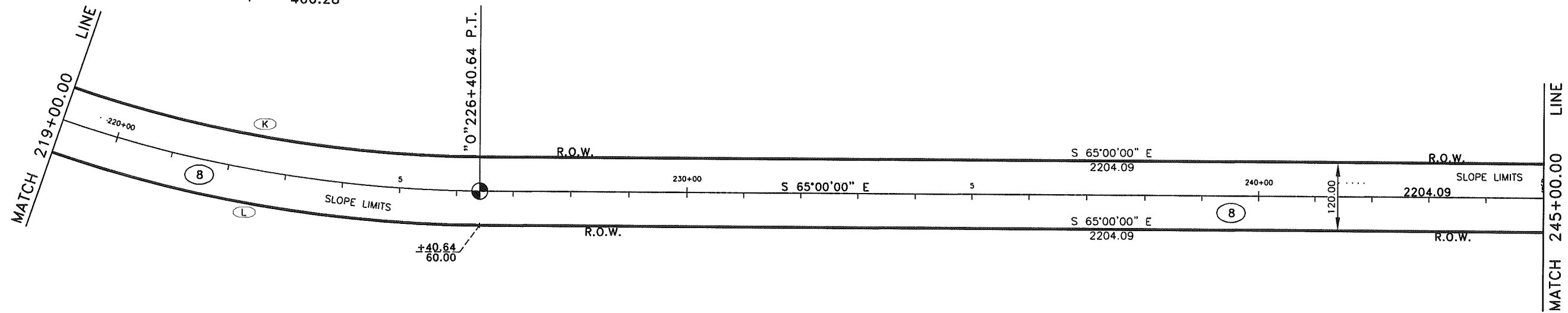
PARCEL NUMBER	OWNER(S)	LARGER PARCEL	ACQUISITION INCL. EXISTING EASEMENTS	NET ACQUISITION	REMAINDER
8	GANA-A' YOO, LIMITED AND DOYON, LIMITED	LARGE	22.750 AC.	22.750 AC.	LARGE

STATE OF ALASKA
 DEPARTMENT OF TRANSPORTATION
 AND
 PUBLIC FACILITIES
 RIGHT OF WAY MAP
 ALASKA PROJECT NO.
 GALENA CAMPION ROAD
 EROSION PROTECTION
 STP-0002(146)/61653
 SCALE: 1" = 100'

K:\Jana\100\61653\Galena_Campion_Road\Civil3D\Drawings\Road_S12.dwg, Dec 14, 2011, 2:22pm

GANA-A' YOO, LIMITED, SURFACE ESTATE
 AND
 DOYON, LIMITED, SUBSURFACE ESTATE
 U.S.S. 6664
 LOT 5

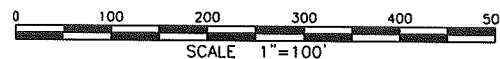
"O" LINE
 D = 23°00'00"
 R = 2291.83'
 L = 920.00'
 T = 466.28'



GANA-A' YOO, LIMITED, SURFACE ESTATE
 AND
 DOYON, LIMITED, SUBSURFACE ESTATE
 U.S.S. 6664
 LOT 5

CURVE DATA

#	DELTA	RADIUS	LENGTH	TANGENT
(K)	23°00'00"	2231.83'	895.91'	454.07'
(L)	23°00'00"	2351.83'	944.09'	478.49'



PARCEL NUMBER	OWNER(S)	LARGER PARCEL	ACQUISITION INCL. EXISTING EASEMENTS	NET ACQUISITION	REMAINDER
8	GANA-A' YOO, LIMITED AND DOYON, LIMITED	LARGE	22.750 AC.	22.750 AC.	LARGE

DATE	REVISION	BY

STATE OF ALASKA
 DEPARTMENT OF TRANSPORTATION
 AND
 PUBLIC FACILITIES
 RIGHT OF WAY MAP
 ALASKA PROJECT NO.
 GALENA CAMPION ROAD
 EROSION PROTECTION
 STP-0002(146)/61653
 SCALE: 1" = 100'
 SHEET 9 OF 12

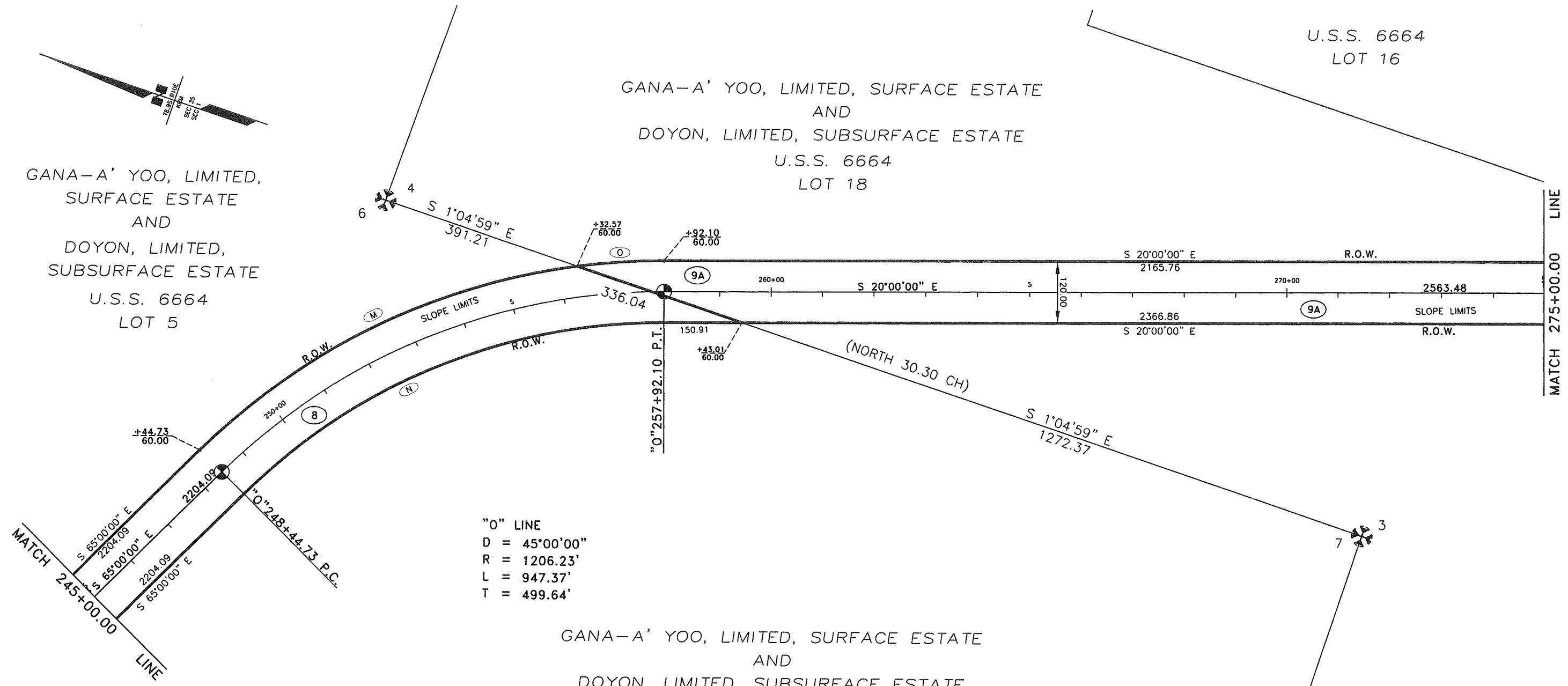
K:\Users\hays\61653_Galena_Campion_Road\Civil\Drawings\Road_S&L\Drawn\Doc\14_2011-251.dwg

U.S.S. 6664
LOT 16

GANA-A' YOO, LIMITED, SURFACE ESTATE
AND
DOYON, LIMITED, SUBSURFACE ESTATE
U.S.S. 6664
LOT 18

GANA-A' YOO, LIMITED,
SURFACE ESTATE
AND
DOYON, LIMITED,
SUBSURFACE ESTATE
U.S.S. 6664
LOT 5

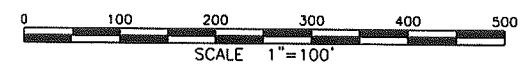
GANA-A' YOO, LIMITED, SURFACE ESTATE
AND
DOYON, LIMITED, SUBSURFACE ESTATE
U.S.S. 6664
LOT 5



"O" LINE
D = 45°00'00"
R = 1206.23'
L = 947.37'
T = 499.64'

CURVE DATA

C#	DELTA	RADIUS	LENGTH	TANGENT
M	37°25'21"	1266.23'	827.03'	428.87'
N	45°00'00"	1146.23'	900.25'	474.78'
O	7°34'39"	1266.23'	167.46'	83.85'



DATE	REVISION	BY

PARCEL NUMBER	OWNER(S)	LARGER PARCEL	ACQUISITION INCL. EXISTING EASEMENTS	NET ACQUISITION	REMAINDER
9A	GANA-A' YOO, LIMITED AND DOYON, LIMITED	LARGE	6.500 AC.	6.500 AC.	LARGE
B	GANA-A' YOO, LIMITED AND DOYON, LIMITED	LARGE	22.750 AC.	22.750 AC.	LARGE

STATE OF ALASKA
DEPARTMENT OF TRANSPORTATION
AND
PUBLIC FACILITIES
RIGHT OF WAY MAP
ALASKA PROJECT NO.
GALENA CAMPION ROAD
EROSION PROTECTION
STP-0002(146)/61653
SCALE: 1" = 100'

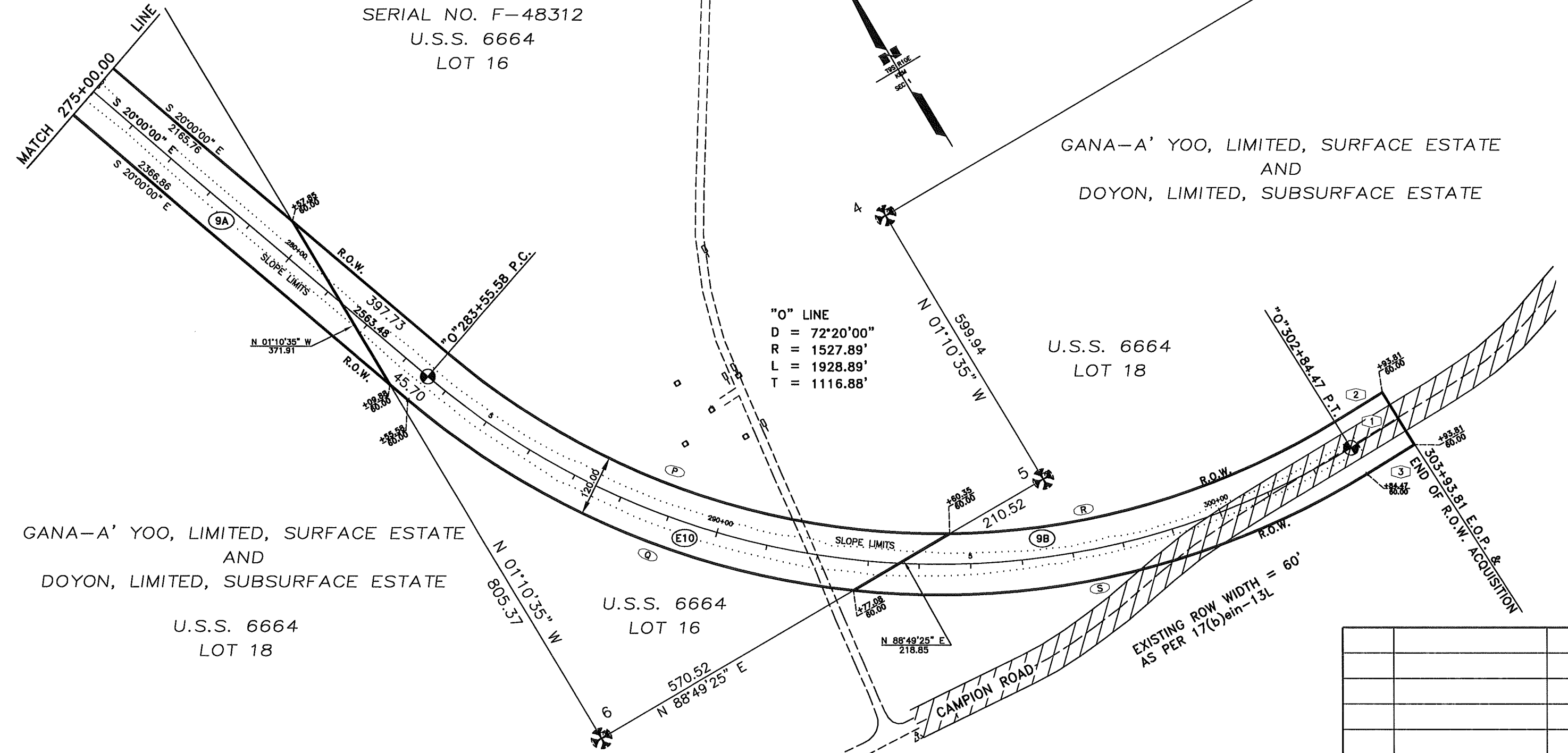
F.A.A. VORTAC TOWER PARCEL
SERIAL NO. F-48312
U.S.S. 6664
LOT 16

GANA-A' YOO, LIMITED, SURFACE ESTATE
AND
DOYON, LIMITED, SUBSURFACE ESTATE

U.S.S. 6664
LOT 18

GANA-A' YOO, LIMITED, SURFACE ESTATE
AND
DOYON, LIMITED, SUBSURFACE ESTATE
U.S.S. 6664
LOT 18

"O" LINE
D = 72°20'00"
R = 1527.89'
L = 1928.89'
T = 1116.88'

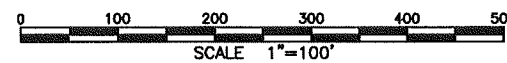


LINE DATA

L#	BEARING	DISTANCE	REFERENCE
1	N 87°40'00" E	109.34'	CENTERLINE
2	N 87°40'00" E	109.34'	R. O. W.
3	N 87°40'00" E	109.34'	R. O. W.

CURVE DATA

C#	DELTA	RADIUS	LENGTH	TANGENT
P	41°25'44"	1467.89'	1061.39'	555.09'
Q	34°33'23"	1587.89'	957.69'	493.91'
R	30°54'16"	1467.89'	791.75'	405.76'
S	37°46'37"	1587.89'	1046.95'	543.30'



PARCEL NUMBER	OWNER(S)	LARGER PARCEL	ACQUISITION INCL. EXISTING EASEMENTS	NET ACQUISITION	REMAINDER
9B	GANA-A' YOO, LIMITED AND DOYON, LIMITED	LARGE	2.842 AC.	2.135 AC.	LARGE
E-10	F.A.A.	LARGE	3.384 AC.	3.384 AC.	LARGE
9A	GANA-A' YOO, LIMITED AND DOYON, LIMITED	LARGE	6.500 AC.	6.500 AC.	LARGE

DATE	REVISION	BY

STATE OF ALASKA
DEPARTMENT OF TRANSPORTATION
AND
PUBLIC FACILITIES
RIGHT OF WAY MAP
ALASKA PROJECT NO.
GALENA CAMPION ROAD
EROSION PROTECTION
STP-0002(146)/61653
SCALE: 1" = 100' SHEET 11 OF 12

C:\Users\jray\OneDrive\Documents\Civil\3D\CampionRoad\512.dwg, Dec 21, 2011 - 10:21am

GENERAL NOTES:

1. THE BASIS OF COORDINATES IS THE RECOVERED BLM MONUMENT CONTROL POINT #2, WHICH IS C5, LOT 16 OF U.S. SURVEY No. 6664.

NAD 83 LATITUDE AND LONGITUDE

LATITUDE 64°44'01.56225" N, LONGITUDE 156°46'42.24119" W

NAD 83 ALASKA STATE PLANE ZONE 6 (METERS)

N: 1196182.12 METERS, E: 558193.93 METERS

PROJECT (GROUND) COORDINATES (US SURVEY FEET)

N: 3924474.19 FEET, E: 1831341.26 FEET

2. THE BASIS OF BEARING IS N 86°20'42" W BETWEEN THE RECOVERED MONUMENTS CP #2 AND CP #6, GALENA DIKE.

3. THE BASIS OF ELEVATIONS IS THE OPUS AVERAGED GEOID06 (NAVD88) ELEVATION OF 183.33 FEET AT CP #6, GALENA DIKE.

4. TO ESTABLISH PROJECT (GROUND) COORDINATES: THE INVERSE COMBINED SCALE FACTOR OF 1.000071290, DERIVED FROM AN AVERAGE OF ALL GPS CONTROL POINTS USING LEICA GEO OFFICE SOFTWARE VERSION 7.0, WAS APPLIED TO THIS PROJECT. A TRANSLATION OF -85.2758 M IN NORTHING AND -39.7937 M IN EASTING WAS USED TO PLACE THE SCALED COORDINATES BACK TO CP #2.

5. THIS SURVEY DOES NOT CONSTITUTE A SUBDIVISION AS DEFINED BY ALASKA STATUTE 40.15.900(5)(A).

6. THE HORIZONTAL CLOSURE FOR THIS SURVEY MEETS OR EXCEEDS 1 PART IN 10,000. THE LARGEST NETWORK HORIZONTAL SEMI-MAJOR ERROR ELLIPSE OF 0.001 METERS AT THE 95% CONFIDENCE LEVEL WAS OBSERVED FOR THE STATIC GPS, AND THE MINIMUM LOOP MISCLOSURE MEETS OR EXCEEDS 1 PART IN 944,936.

7. VERIFY HORIZONTAL AND VERTICAL CONTROL PRIOR TO USE. ON MULTI YEAR PROJECTS, VERIFY ALL CONTROL ON A SEASONAL BASIS.

8. THE NET ACQUISITION AREA NOTED IN THE OWNERSHIP BLOCK IS EXCLUSIVE OF ANY AREAS SHOWN AS EXISTING RIGHT OF WAY.

9. THESE PLANS MAY BE USED FOR THE ESTABLISHMENT OF RIGHT OF WAY LIMITS ONLY. THESE DRAWINGS SHOULD NOT BE USED AS A BASIS FOR ESTABLISHING ADJOINING PROPERTY LINES AND CORNERS. PROJECT RECORD OF SURVEY SHOULD BE CONSULTED TO DETERMINE THE FINAL LOCATION OF MONUMENTATION SET FOR THIS PROJECT.

10. THE BASIS OF STATIONING IS "0" 100+00.00.

CENTERLINE TABLE

'0" STATION	OFFSET	NORTHING	EASTING	CONTROL POINT
100+00.00	00.00	3930156.90	1815860.08	BOP
106+73.61	00.00	3930688.99	1816185.31	PC
106+73.61	1206.23	3930059.91	1817214.50	RADIUS
124+88.14	00.00	3931104.53	1817817.62	PT
144+29.08	00.00	3930134.06	1819498.52	PC
144+79.08	-2291.83	3932118.84	1820644.43	RADIUS
165+49.08	00.00	3930009.20	1821539.92	PT
184+01.67	00.00	3930733.07	1823245.24	PC
193+21.67	2291.83	3928623.42	1824140.73	RADIUS
212+41.67	00.00	3930156.96	1825843.89	PT
217+70.64	00.00	3929801.01	1826164.39	PC
217+20.64	-2291.83	3931334.55	1827867.55	RADIUS
226+40.64	00.00	3929257.44	1826898.98	PT
248+44.73	00.00	3928325.95	1828896.56	PC
257+92.10	1206.23	3927232.74	1828386.79	RADIUS
257+92.10	00.00	3927645.30	1829520.27	PT
283+55.58	00.00	3925236.41	1830397.04	PC
302+84.47	-1527.89	3925758.98	1831832.78	RADIUS
302+84.47	00.00	3924232.36	1831894.98	PT
303+93.81	00.00	3924236.81	1832004.23	EOP

DATE	REVISION	BY

STATE OF ALASKA
 DEPARTMENT OF TRANSPORTATION
 AND
 PUBLIC FACILITIES
 RIGHT OF WAY MAP
 ALASKA PROJECT NO.
 GALENA CAMPION ROAD
 EROSION PROTECTION
 STP-0002(146)/61653

SCALE: 1" = 100' SHEET 12 OF 12