

U.S. Survey No. 1755  
 HOMESTEAD  
 of  
 Albert Forsythe  
 Area 115.296 Acres

MEANDERS

- 1- N. 31° 41' E. 4.12 chains
- 2- S. 63° 36' E. 4.06 "
- 3- N. 61° 06' E. 7.12 "
- 4- N. 39° 07' E. 4.20 "
- 5- N. 17° 03' E. 5.06 "
- 6- N. 49° 32' E. 7.58 "
- 7- N. 5° 04' E. 3.00 "
- 8- S. 63° 34' E. 2.34 "
- 9- S. 5° 41' E. 18.86 "
- 10- S. 53° 30' E. 9.70 "
- 11- S. 27° 09' E. 3.34 "
- 12- S. 2° 07' W. 11.37 "
- 13- S. 23° 30' W. 4.66 "
- 14- S. 31° 37' W. 7.97 "
- 15- S. 25° 08' W. 8.65 "
- 16- S. 69° 40' W. 2.81 "
- 17- N. 71° 27' W. 6.92 "
- 18- N. 29° 27' W. 10.16 "
- 19- N. 11° 29' W. 4.12 "
- 20- N. 32° 34' W. 5.56 "
- 21- N. 24° 25' W. 14.36 "
- 22- N. 13° 32' W. 5.92 "

P L A T  
 of  
 U. S. SURVEY No. 1755  
 of the  
 HOMESTEAD CLAIM  
 (Executed under the provisions of the Act of Con-  
 gress, approved June 28, 1918.)  
 of  
 ALBERT FORSYTHE  
 Embracing all of Volt Island,  
 Stephens Passage, in the  
 TERRITORY OF ALASKA  
 Area, 115.296 Acres.  
 Declination, 31° 15' E.  
 Scale: 5 Chains to the Inch.  
 Latitude: 58° 15' 20" N; Longitude 134° 43' 12" W.  
 As executed by  
 Fred Dahlquist, U.S. Cadastral Engineer,  
 April 22-23, 1927.

U.S. SUPERVISOR OF SURVEYS' CERTIFICATE,  
 Denver, Colorado, November 22, 1927.  
 The original field notes of Survey No. 1755, of  
 the Homestead Claim of Albert Forsyth, from which  
 this plat has been made, have been examined and app-  
 roved, and I hereby certify that they furnish such an  
 accurate description of said claim as will, if incor-  
 porated into a patent, serve fully to identify the  
 premises, and that such reference is made therein to  
 natural objects and permanent monuments, as will per-  
 petuate and fix the Locus thereof.  
 and I further certify that this is a correct plat  
 of said claim, made in conformity with said original  
 field notes of the survey thereof, and the same is  
 hereby approved.

*Wm. P. Johnson*  
 U.S. Supervisor of Surveys.

DEPARTMENT OF THE INTERIOR  
 GENERAL LAND OFFICE  
 Washington, D.C., October 17, 1928.

The survey represented by this plat having been  
 correctly executed in accordance with the require-  
 ments of law and the regulation of this office, is  
 hereby accepted.

*J. K. O'Connell*  
 Acting Assistant Commissioner.

RECEIVED  
OFFICE OF SURVEYOR GENERAL  
JUNEAU, ALASKA

APR 27 1927

ANSWERED

## FIELD NOTES

OF THE SURVEY OF THE

BOUNDARIES AND MEANDER LINES

OF

THE HOMESTEAD CLAIM OF ALBERT FORSYTH.

U.S. SURVEY NO. 1755.

EMBRACING ALL OF COLT ISLAND, STEPHENS

PASSAGE, IN THE TERRITORY OF ALASKA.

IN

LATITUDE  $58^{\circ}15'28''$ N. LONGITUDE  $134^{\circ}43'12''$ W.

Of the \_\_\_\_\_ Meridian,

In the State of \_\_\_\_\_ Territory of Alaska.

EXECUTED BY

Fred Dahlquist, U.S. Cadastral Engineer.

In the capacity of U. S. Surveyor \_\_\_\_\_, under Special Instructions dated Feb. 7, 1927, 191 ,

issued by the United States ~~Surveyor General~~ Public Survey Office to govern surveys included in Group

No. \_\_\_\_\_, which were approved by the Commissioner of the General Land

Office, Feb. 19, \_\_\_\_\_, 1927, and Assignment Instructions dated Apr. 19, 1927., 191

Survey commenced April 22, 1927. \_\_\_\_\_, 191

Survey completed April 23, 1927. \_\_\_\_\_, 191

## Field Notes of Survey No. 1755.

SCIENTIFIC DATA.

Owing to continued cloudy and inclement weather conditions it was not possible to obtain an observation for azimuth during the execution of this survey. I therefore deflect angles from the meridian obtained by J. Frank Warner, U.S. Cadastral Engineer, in making U.S. Survey No. 1285, and which was taken at a point, in latitude  $58^{\circ}15'N.$ , and longitude  $134^{\circ}44'W.$ , which bears  $S.42^{\circ}18'15"W.$ , 57.44 chs., dist., from the true point for Cor. No. 1, M.C., this survey. In using this azimuth, proper allowance has been made for convergency of meridians, owing to difference of westing of the two positions.

The scientific data of the observation is given below:

Mean time of observation, 4h. 45m. P.M., April 14, 1920.

1st. Obs.	Alt. $17^{\circ}04'$	turn to left to mark	$23^{\circ}51'$
2nd. "	" $16^{\circ}12'$	" " " "	$25^{\circ}20'$
3rd. "	" $15^{\circ}35'$	" " " "	$26^{\circ}55'$
4th. "	" $15^{\circ}15'$	" " " "	-
5th. "	" $10^{\circ}12'$	" " " "	$35^{\circ}10'$

Solution by the formula:

$$\cos. \frac{1}{2}PZS \text{ equals } = \sqrt{\frac{\sin \frac{1}{2}S \times \sin(\frac{1}{2}S - \text{codecl.})}{\sin \text{coalt.} \times \sin \text{colat.}}}$$

where S equals codecl. + colat. + coalt.

Solution of First Observation.

colat.	$31^{\circ}45'00''$	a. c. log sin	0.278838
coalt.	$72^{\circ}59'00''$	a. c. log sin	0.019443
codecl.	$80^{\circ}23'35''$		
	2) $185^{\circ}07'35''$		
	$92^{\circ}33'47''$	log sin	9.999761
	$80^{\circ}23'35''$		
	$12^{\circ}10'12''$	log sin	<u>9.323897</u>
		2) $19.621938$	
		log Cos $\frac{1}{2}A$	= <u>9.810969</u>

$$\frac{1}{2}A = 49^{\circ}41'30''$$

$99^{\circ}23'00''$	azimuth from the North.
S. $80^{\circ}37'00''W$	course to sun.
$23^{\circ}51'00''$	angle between sun and mark.
S. $56^{\circ}46'00''W$	bearing to mark by 1st. observation.
S. $56^{\circ}44'00''W$	" " " " 2nd. "
S. $56^{\circ}45'00''W$	" " " " 3rd. "
S. $56^{\circ}46'00''W$	" " " " 5th. "
S. $56^{\circ}45'00''W$	course by mean of four observations.

## Field Notes of Survey No. 1755.

## Chains.

Survey commenced April 22, 1927, and executed with Lietz transit No. 9502, the horizontal plates of which read by double opposite verniers to single minutes of arc, which is also the least count on the vernier of the vertical circle.

The transit has been approved by the Assistant Supervisor of Surveys for Alaska, April 15, 1925.

All adjustments of the transit examined and verified before commencing the survey, and maintained in adjustment throughout progress of field work.

Measurements made with a five chain steel tape, first chain graduated to single links; remaining four chains graduated every ten links. Tape tested by comparison with a 100 ft. steel standard and found correct.

Slope angles determined by transit readings, and all measurements reduced to horizontal distances.

All lines of the survey deflected from the true meridian determined as hereinbefore shown, and carried by fore and backsights. The latitude and longitude obtained by computation from data obtained from the field notes of U.S. Survey No. 1285.

I begin at the true point for Cor. No. 1, M.C., on line of mean high tide of Stephens Passage, which point is situated on the prominent point forming the northwest corner of Colt Island; in latitude  $58^{\circ}15'28''$  N., and longitude  $134^{\circ}43'12''$  W., from which

U.S.L.M. No. 1285, hereinafter described, bears  $S. 31^{\circ}13' W.$ , 57.87 chs. dist.

True point for Cor. No. 1, M.C., Sur. 1285, hereinafter described, bears  $S. 42^{\circ}18'15'' W.$ , 57.44 chs. dist.

As the above true point for meander corner falls at an unsafe place for corner, I establish a witness corner at a point which bears  $S. 38^{\circ}22' E.$ , 0.21 chs. dist., from the true corner point, as follows:

On the sharply sloping face of a bedrock ledge, showing

## Field Notes of Survey No. 1755.

Chains.

2 ft. x 3½ ft. above ground and facing northwest, I mark with cross (+) and with letters: WC M1 S1755, for witness corner to Cor. No. 1 and M.C. of this survey, from which

A spruce, 9 ins. dia. bears S. 73° 29' E., 1.55 chs. dist., marked WC S1755 M1 BT.

A spruce, 6 ins. dia. bears S. 13° 20' E., 0.67 chs. dist., marked WC S1755 M1 BT.

Thence from the true meander corner point.

With meanders of Colt Island.

Along line of mean high tide, over stony, sandy, and rocky beach.

1 N. 31° 41' E. 4.12 chs..

2 S. 63° 36' E. 4.06 "

3 N. 61° 06' E. 7.12 "

4 N. 39° 07' E. 4.20 "

5 N. 17° 03' E. 5.06 "

6 N. 49° 32' E. 7.58 "

7 N. 5° 04' E. 3.00 " At end, rock bears N. 27° W., 4.30 chs. dist.

8 S. 63° 34' E. 2.34 "

9 S. 5° 41' E. 18.86 "

10 S. 53° 30' E. 9.70 "

11 S. 27° 09' E. 3.34 "

12 S. 2° 07' W. 11.37 "

13 S. 23° 30' W. 4.66 "

14 S. 31° 37' W. 7.97 "

15 S. 25° 08' W. 8.65 "

16 S. 69° 40' W. 2.81 "

17 N. 71° 27' W. 6.92 " At end, sand spit, bare at low water, extends to N. end of Horse Island.

18 N. 29° 27' W. 10.16 "

19 N. 11° 29' W. 4.12 "

20 N. 32° 34' W. 5.56 "

21 N. 24° 25' W. 14.36 "

22 N. 13° 32' W. 5.92 " Intersect true point for corner No. 1, M.C., and the place of beginning, containing 115.296 acres.

Land: gently rolling upland; occasional rocky bluffs from 10 to 20 ft. high, along beach.

Field Notes of Survey No.1755.

Chains.

Soil:sandy loam,black muck,and leaf mold;2nd.rate.

Timber:heavy spruce and hemlock.

Undergrowth:berry bushes and buck brush.

TIE TO U.S.L.M.No.1285.

Owing to the location monument.being situated on the opposite side of the tide-water channel,it is impracticable to make.the tie by measurement on a direct line.I therefore make the tie from true point for Cor.No.1,M.C.,to the location monument,as follows;by triangulation:

From the true point for Cor.No.1,M.C.,a flag set at the location monument,bears S.31°13'W. To.obtain a base line, I measure a traverse line as follows;from Cor.No.1,M.C.

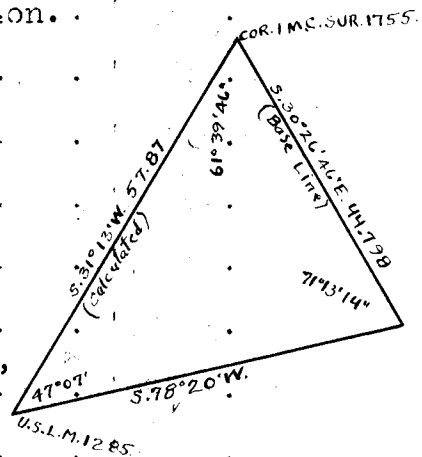
- S.13°32'E. 5.92 chs.
- S.24°25'E. 14.36 "
- S.32°34'E. 5.56 "
- S.11°29'E. 4.12 "
- S.29°27'E. 10.18 "
- S.71°27'E. 6.92 " to a point from which the flag

set at the location monument,bears S.78°20'W.

Computing the above traverse,gives for the base line S. 30°26'46"E.,44.798 chs.dist.,from Cor.No.1,M.C.The angle subtended at the location monument is.47°07'. All angles checked by deflection and repetition..

log 44.798 = 1.651258  
 log sin 71°13'14" = 9.976242  
 1.627400  
 log sin 47°07' = 9.864950  
 log 57.87 = 1.762450

Therefore the course and distance from true point for Cor.No.1,M.C., to U.S.L.M.No.1285,is S.31°13'W.,



57.87 chs.dist.The monument is a granite boulder in place showing 14x12x6 ft.above beach,mkd as reported.

TIE TO COR.No.1 SUR.1285.

From U.S.L.M.No.1285,the course and distance,by direct measurement,to true point for Cor.No.1,M.C.of Sur.No.1285 is N.51°02'W.,11.15 chs.dist.

Therefore I make tie from point for Cor.No.1M.C.,of Sur.

## Field Notes of Survey No.1755.

No.1755 to point for Cor.No.1,M.C.,of Survey No.1285 by traverse,as follows;from Cor.No.1,M.C.Sur.1755.

S.31°13'W. 57.87 chs.to U.S.L.M.No.1285.

N.51°02'W. 11.15 " to Cor.No.1,M.C.Sur.No.1285.

Computing the above traverse,gives for the course and distance to Cor.No.1,M.C.Sur.1285,as S.42°18'15"W.,57.44 chs.Witness corner to Cor.1,M.C.,Sur.1285 bears West,0.43 chs.dist.,from the true meander corner point,and is an iron post,1 in.dia.,showing 15 ins.above ground,firmly set and marked as described in the official records.

-----  
Improvements.

The improvements are tied to the end of the third meander course,and consist of:

A log cabin,14x24 ft.,long side bears about E.and W.,the NW.corner of which bears,East,5.19 chs.dist.

A log cabin,10x24 ft.,long side bears NE.and SW.,the N. corner of which bears S.15°30'E.,3.75 chs.dist.

A log cabin,10x12 ft.,long side bears NE.and SW.,the N. corner of which bears S.7°00'E.,4.33 chs.dist.

A pole shed,8x16 ft.,long side bears about E.and W.,the NE.corner of which bears S.1°00'W.,3.89 chs.dist.

There are about three acres cultivated land,in irregular areas around and near the buildings,which are situated in a natural clearing,built up by wave action,the indentation of the shore line in front of the buildings,having at some time in the past,extended further inland.

There ~~is~~ <sup>are</sup> about five chains of pole and shake fence.

-----  
General Description.

The land embraced within this survey contains the whole of Colt Island,situated in Stephens Passage,an arm of the Pacific Ocean,and lying just north of Horse Island.

The island is practically <sup>all</sup> covered with spruce and hemlock timber,and a dense undergrowth of berry bushes,buck brush and alder.The soil consists of sandy loam,black muck,overlaid with leaf mold,and in some places with moss.There

Field Notes of Survey No. 1755.

are no streams, roads, or trails on the land. All travel to and from the place is by water. The land is gently rolling and well adapted to the raising of vegetables and berries.

*Fred Dahlquist*  
U.S. Cadastral Engineer.



DIRECTIONS.—1. Carry out the area in acres to three decimals, and all other calculations to two decimals only.

2. In balancing Lat. and Dep. do not obliterate or change the original figures.

Put the corrected figure or figures above in red ink. Do not change the footing of the original figures, but put below them the corrected footing in red ink.

The corrections for balancing fallings should be proportional to the lengths of the lines.

3. In calculations of fallings take result to nearest hundredth. In calculations of N. and S. areas drop all after second decimal. Surveyors are advised to use the Standard Field Tables issued by G. L. O.

①

# TABLING AND CALCULATIONS OF Survey 1755 - Colt Island.

No.	COURSE.	DISTANCE.	LATITUDES.		DEPARTURES.		DOUBLE M. D.	N. AREAS.	S. AREAS.
			NORTH.	SOUTH.	EAST.	WEST.			
1	N. 31° 41' E.	412	351		216		6878	2442	
2	N. 63° 36' E.	406		181	364		6298		11399
3	N. 61° 06' E.	712			623		5311	18270	
4	N. 39° 07' E.	420			225		4423	5209	
5	N. 17° 03' E.	506			120		4010	19408	
6	N. 49° 32' E.	758			572		3235	16162	
7	N. 5° 04' E.	300			218		2682	3019	
8	N. 63° 34' E.	234		164	210		2446		2544
9	N. 5° 41' E.	1336		1876	1876		2050		38458
10	N. 53° 30' E.	970		577	780		1084		6255
11	N. 27° 04' E.	334		297	152		182		451
12	N. 2° 07' W.	1137		1136		42	42		477
13	N. 23° 30' W.	466		427		186	270		1153
14	N. 24° 37' W.	797		679		418	374		5934
15	N. 25° 28' W.	865		783		367	1659		12990
16	N. 27° 10' W.	281		98		263	2239		2243
17	N. 27° 27' W.	692	220		656		3208	2058	
18	N. 27° 27' W.	1016	885		500		4754	33621	
19	N. 27° 27' W.	412	104		32		4946	19922	
20	N. 32° 34' W.	556	469		299		3227	24934	

DIRECTIONS.—1. Carry out the area in acres to three decimals, and all other calculations to two decimals only.

2. In balancing Lat. and Dep. do not obliterate or change the original figures.

Put the corrected figure or figures above in red ink. Do not change the footing of the original figures, but put below them the corrected footing in red ink.

The corrections for balancing fallings should be proportional to the lengths of the lines.  
 3. In calculations of fallings take result to nearest hundredth. In calculations of N. and S. areas drop all after second decimal. Surveyors are advised to use the Standard Field Tables issued by G. L. O.

②

TABLING AND CALCULATIONS OF Survey 1755 - Colt Island.

No.	COURSE.	DISTANCE.	LATITUDES.		DEPARTURES.		DOUBLE M. D.	N. AREAS.	S. AREAS.
			NORTH.	SOUTH.	EAST.	WEST.			
41337 91076 23401 97223	N. 24° 25' W.	1436	1308			595 <del>594</del>	6221	81371	
	N. 13' 32' W.	592	576			139	6955	40061	
			6158	<del>6159</del> 6158	<del>3548</del> 3547	<del>3546</del> 3547		312497	81904
								81904	
								21230593	
								101152965	
								Area = 115.29 acres	

215

4-680

**FIELD ASSISTANTS.**

NAMES.	CAPACITY.
L.A. Dauphiny	Chainman and flagman.
Hubert Gilligan	Chainman and flagman.

CERTIFICATE OF UNITED STATES SURVEYOR.

I, Fred Dahlquist, U.S. Cadastral Engineer, U. S. Surveyor, hereby certify upon honor that, in pursuance of special instructions received from the U. S. Surveyor General, Public Survey Office, Juneau, Alaska,

bearing date of the seventh day of February, 1927, I have well, faithfully, and truly in my own proper person, and in strict conformity with said instructions, the Manual of Surveying Instructions, and the laws of the United States, surveyed all those parts or portions of the boundaries and meander lines of U.S. Survey No. 1755, the homestead claim of Albert Forsyth

of the Meridian, in the State of Territory of Alaska, which are represented in the foregoing field notes as having been executed by me, and under my direction; and that all the corners of said survey have been established and perpetuated in strict accordance with the Manual of Surveying Instructions, and the special written instructions of the U. S. Surveyor General for and in the specific manner described in the field notes, and that the foregoing are the original field notes of such survey.

Dated at Juneau, Alaska, April 27, 1927.

Fred Dahlquist U.S. Cadastral Engineer. U. S. Surveyor.

APPROVAL.

SUPERVISOR OF SURVEYS OFFICE OF THE U. S. SURVEYOR GENERAL

Denver, Colorado. NOV 22 1927, 19

The foregoing field notes of the survey of the boundaries and meander lines of U.S. Survey No. 1755, the homestead claim of Albert Forsyth

executed by Fred Dahlquist, U.S. Cadastral Engineer under his special instructions dated February 7, 1927, having been critically examined, and the necessary corrections and explanations made, the said field notes, and the surveys they describe, are hereby approved.

Supervisor of Surveys U. S. Surveyor General

I certify that the foregoing transcript of the field notes of the above-described surveys in has been correctly copied from the original notes on file in this office.

U. S. Surveyor General.