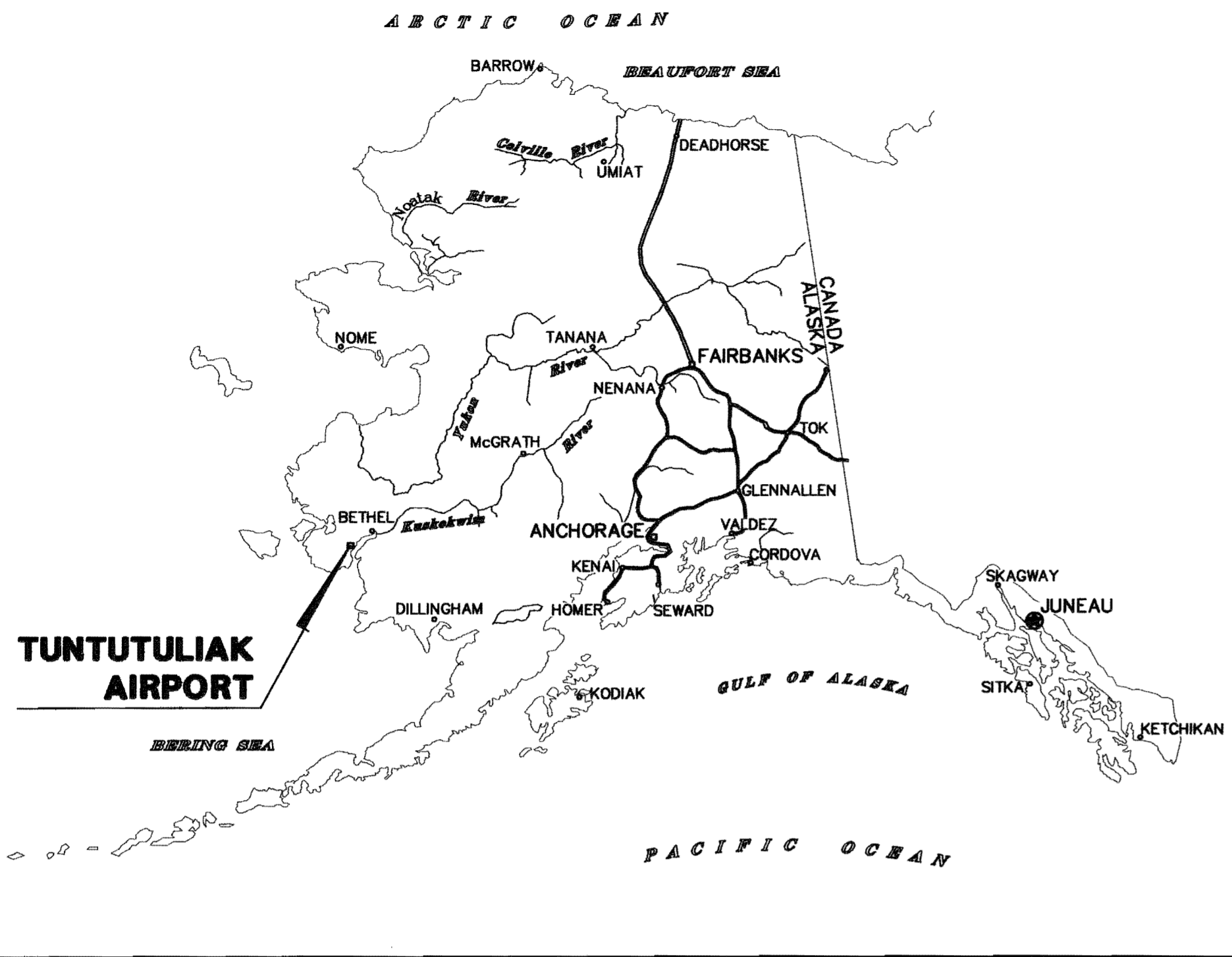
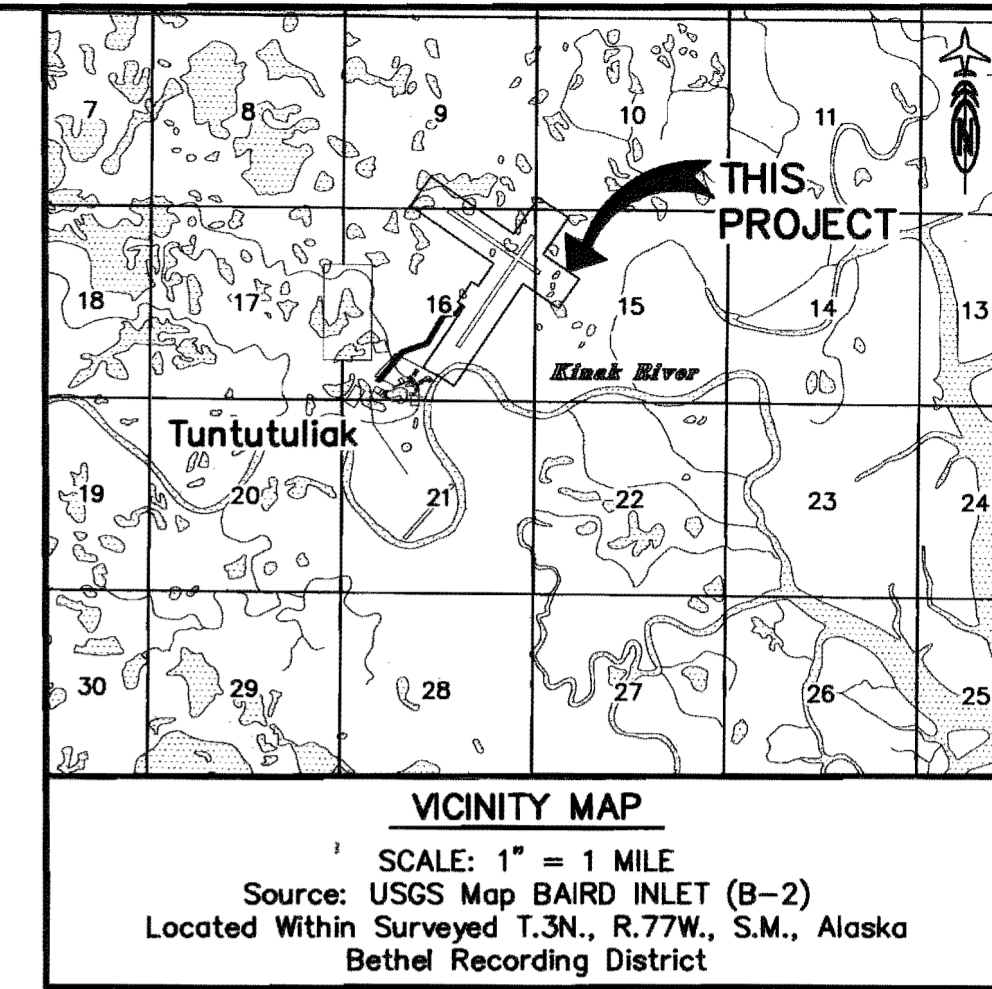


STATE OF ALASKA
DEPARTMENT OF TRANSPORTATION
&
PUBLIC FACILITIES

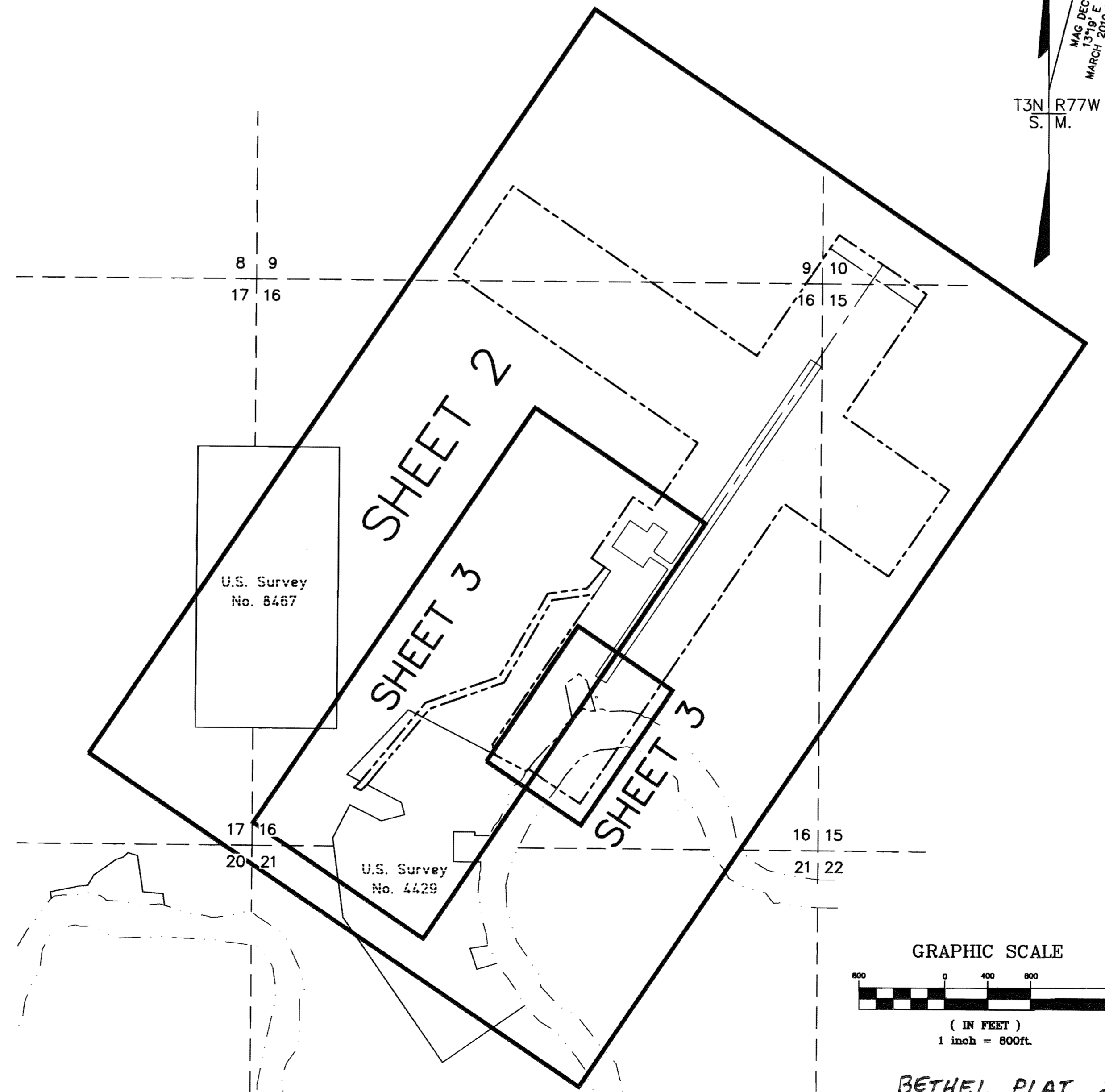
TUNTUTULIAK AIRPORT
RIGHT OF WAY ACQUISITION PLAT

AKSAS No. 55695



SURVEY NOTES

- The information provided here is based on the field survey performed by R&M Consultants, Inc., March 1st through March 4th, 2010. Additionally, R&M surveys from 1996-2000 and McClintock Land Associates surveys from 2004-2006 were compiled and best fit to this survey's GPS Static positions.
- Primary horizontal control was established using Static GPS techniques with Trimble dual frequency receivers. The GPS vectors were free adjusted by simultaneous least squares methods using Trimble Geomatics Office software.
- The bearings shown are local plane bearings as oriented to the State Plane Zone 7 grid Basis of Bearings. The rotation angle between the True Meridian and the local plane bearings on the runway centerline is 0°34'08" clockwise.
- The minimum closure of the Airport Boundary as field monumented meets or exceeds 1:10000.
- Runway 02-20 stationing is based on the As-built threshold stationing at R/W End 02: 21+00.00. Refer to "Construction Plans for Tuntutuliak Airport, 2006", sheet 19 of 24. See the red-lined "As-built" set of these drawings.
Access Boardwalk stationing is based on record stationing as reported in "Construction Plans for Tuntutuliak Airport, 2006", sheet N1 of 22.
- The Boundary information shown here is the same as that shown on "Tuntutuliak Airport Boundary" Record of Survey plat 2000-35, B.R.D. However, the 2000 survey has been converted from meters to U.S. Survey Feet and has been translated and rotated to the datum described in the drawing "Survey Control Diagram" Record of Survey plat 2006-17, B.R.D. The 2000 R.O.S. was never mathematically linked to the 2006 R.O.S. The 2000 survey has now been best-fit to the newer datum through ties from Station "Tunt 1" to existing boundary monumentation.
- All dimensions and coordinates shown hereon are in U. S. Survey Feet unless otherwise noted. Distances shown are reduced to horizontal ground distances.
- Section lines are based on protraction and ties to NGS Tri-stations "NAPA" and "Bivouvac". The exterior lines of T.3N., R.77W. have been surveyed. All interior lines off the township are unsurveyed.
- This is a survey of the Tuntutuliak Airport Right-of-Way described as Parcels 1-4, 7-10, & E-11 in the following documents:
Deed, recorded 9/10/1998 in Bk. 80 Pg. 776, B.R.D., Surface Estate.
Deed, recorded 9/10/1998 in Bk. 80 Pg. 784, B.R.D., Subsurface Estate.
Deed, recorded 3/31/2009 as Document No. 2009-000418-0, B.R.D., Surface Estate.
Deed, recorded 3/31/2009 as Document No. 2009-000419-0, B.R.D., Subsurface Estate.
ILMA, recorded 10/26/1998 in Bk. 81 Pg. 537, B.R.D.
Easement, acquired 12/6/2000 from Tuntutuliak Traditional Council
Easement, recorded 11/6/2009, as Document No. 2009-001343-0, Surface Estate.
Easement and Restrictive Covenant, recorded 9/10/1998 in Bk. 80 Pg. 792, B.R.D., Surface Estate.
Restrictive Covenant, recorded 9/10/1998 in Bk. 80 Pg. 797, B.R.D., Subsurface Estate.
Additional source documents are:
U.S. Patent 50-94-0489, U.S. Patent 50-94-0490
BLM MTP and Rectangular plats for T.3N. R.77W. S.M. AK.
BLM U.S. Survey 4429 plat
Tuntutuliak Survey Control Diagram R.O.S. Plat 2006-17, B.R.D.
Tuntutuliak Survey Control Diagram, DOT&PF, dated 1/24/1998.
Tuntutuliak Survey Control Sheet, DOT&PF dated 6/15/2006
Tuntutuliak Airport Property Plan, DOT&PF dated 8/98, rev. date 7/27/06
Tuntutuliak Airport R.O.S., circa May 2010, recording date pending
Construction Plans for Tuntutuliak Airport, 2006, Redline Copies
- Right-of-Way has been acquired. Construction has been completed.



PLAT APPROVAL

This plat is approved by the Commissioner of the Department of Natural Resources, or the Commissioner's Designee, in accordance with AS 40.15.

Shelley Jennings
COMMISSIONER Date Oct. 08, 2010

SURVEYOR'S CERTIFICATE

I, Randal H. Brinker, hereby certify that I am a registered professional land surveyor in the state of Alaska and that this plat represents a survey made by me or under my direct supervision, and that the monuments shown on this plat actually exist as described, and that all dimensions and other details are true and correct to the best of my knowledge.

Randal H. Brinker
RANDAL H. BRINKER, L.S. 8852 Date 9/24/10

HORIZONTAL CONTROL STATEMENT

Coordinate System:
Project coordinates are on a local ground-based grid coordinate system, expressed in U.S. Survey Feet. This local system was developed by McClintock Land Associates and documented in the "Survey Control Diagram" Record of Survey (R.O.S.) plat 2006-17, B.R.D.

Basis of Coordinates:
All project coordinates are referenced to Station "TUNT 1" (#10), as shown on "Survey Control Diagram" R.O.S. plat 2006-17, B.R.D. The local U.S. Survey Feet coordinate values for "TUNT 1" are N 50,000.0000, E 30,000.0000. A Scale Factor of 1.0000842122 was applied to the NAD83 (GRS96)(EPOCH:2003) Alaska State Plane Zone 7 values to obtain local ground distances. Note: EPOCH:2003 was not stated in R.O.S. 2006-17. R.O.S. 2006-17 states that State Plane Coordinates are based on OPUS solutions.

Basis of Bearings:
Project bearings are NAD83 Alaska State Plane Zone 7 grid bearings translated to the local coordinate system.

Translation Parameters:
To convert the local U.S. Survey Feet coordinates to NAD83 (GRS96) (EPOCH:2003.0000) Alaska State Plane Zone 7 feet coordinates:
Step 1: Translate using +2,270,764.3192 N, +1,492,237.5082 E.
Step 2: Scale by .9999157949 (base point 0,0).

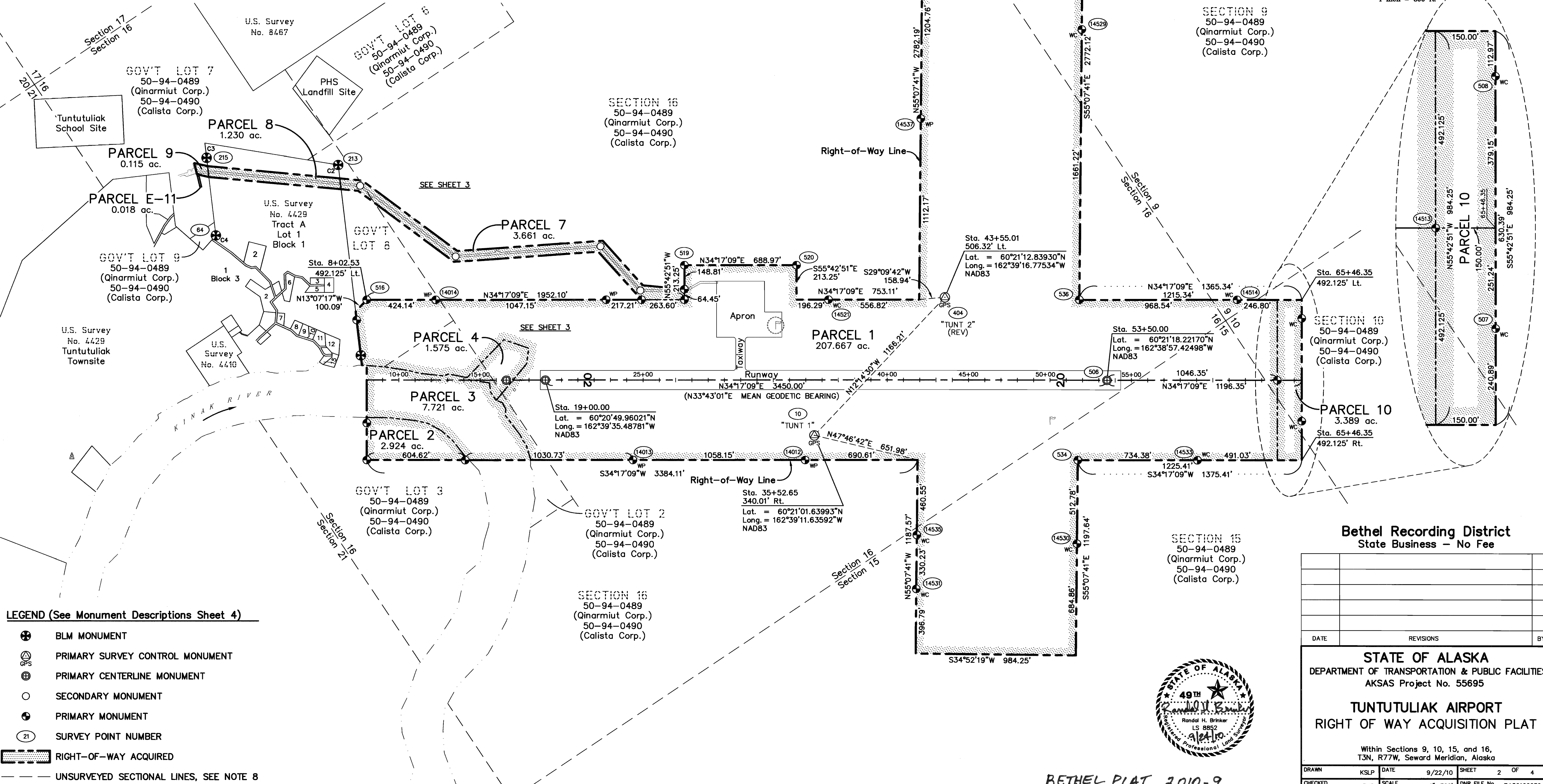
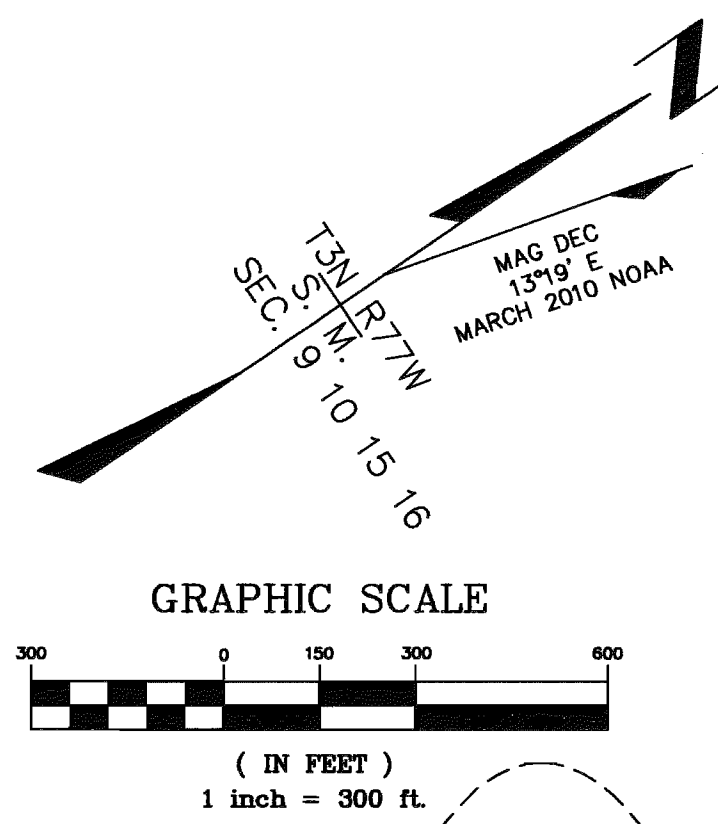
To convert the NAD83 (GRS96)(EPOCH:2003.0000) Alaska State Plane Zone 7 feet coordinates to local U.S. Survey Feet coordinates:
Step 1: Scale by 1.0000842122 (base point 0,0).
Step 2: Translate using -2,270,764.3192 N, -1,492,237.5082 E.

BETHEL RECORDING DISTRICT

STATE BUSINESS-NO FEE

Z:\Project\1375.02 Tuntutuliak Airport\Survey\Acad\Survey\Tuntutuliak_ROW-Acq-v2005.dwg
Plotted 9/21/2010 3:46 PM by Hank Brinker

PROPERTY STATUS								
PARCEL No.	INTEREST TO BE ACQUIRED	GRANTOR	GRANTEE	LARGER PARCEL	NET TAKE	REMAINDER	RECORDED DOC. No.	ACQUIRED UNDER A.I.P. No.
PARCEL 1	Fee Simple	Qinarmuit Corporation - Surface	State of Alaska DOT&PF	Large	207.667 ac.	Large	Bk. 80 Pg. 776	3-02-00302-0198
PARCEL 2	Fee Simple	Qinarmuit Corporation - Subsurface	State of Alaska DOT&PF	Large	2.924 ac.	Large	Bk. 80 Pg. 784	3-02-00302-0198
PARCEL 3	Fee Simple	Alaska Dept. of Natural Resources	State of Alaska DOT&PF	Large	7.721 ac.	Large	Bk. 80 Pg. 776	3-02-00302-0198
PARCEL 4	Easement & Restrictive Covenant	Qinarmuit Corporation - Surface	State of Alaska DOT&PF	Large	1.575 ac.	Large	Bk. 80 Pg. 792	3-02-00302-0198
PARCEL 7	Fee Simple	Qinarmuit Corporation - Subsurface	State of Alaska DOT&PF	Large	3.661 ac.	Large	Bk. 80 Pg. 784	3-02-00302-0198
PARCEL 8	Easement	Tuntutuliak Traditional Council	State of Alaska DOT&PF	Large	1.230 ac.	Large	Bk. 90 Pg. 630	3-02-00302-0198
PARCEL 9	Fee Simple	Qinarmuit Corporation - Surface	State of Alaska DOT&PF	Large	0.115 ac.	Large	Bk. 80 Pg. 776	3-02-00302-0198
PARCEL 10	Fee Simple	Qinarmuit Corporation - Surface	State of Alaska DOT&PF	Large	3.389 ac.	Large	2009-000418-0	03-02-0303-002-2006
PARCEL E-11	Fee Simple	Qinarmuit Corporation - Subsurface	State of Alaska DOT&PF	Large	0.018 ac.	Large	2009-000419-0	03-02-0303-002-2006
PARCEL E-11	Easement	Qinarmuit Corporation - Surface	State of Alaska DOT&PF	Large	0.018 ac.	Large	2009-001343-0	03-02-0303-002-2006



- LEGEND (See Monument Descriptions Sheet 4)**
- ⊕ BLM MONUMENT
 - ⊕ PRIMARY SURVEY CONTROL MONUMENT
 - ⊕ PRIMARY CENTERLINE MONUMENT
 - SECONDARY MONUMENT
 - ⊕ PRIMARY MONUMENT
 - 21 SURVEY POINT NUMBER
 - RIGHT-OF-WAY ACQUIRED
 - UNSURVEYED SECTIONAL LINES, SEE NOTE 8

Bethel Recording District
State Business - No Fee

DATE	REVISIONS	BY

STATE OF ALASKA
DEPARTMENT OF TRANSPORTATION & PUBLIC FACILITIES
AKSAS Project No. 55695

TUNTUTULIAK AIRPORT
RIGHT OF WAY ACQUISITION PLAT

Within Sections 9, 10, 15, and 16,
T3N, R77W, Seward Meridian, Alaska

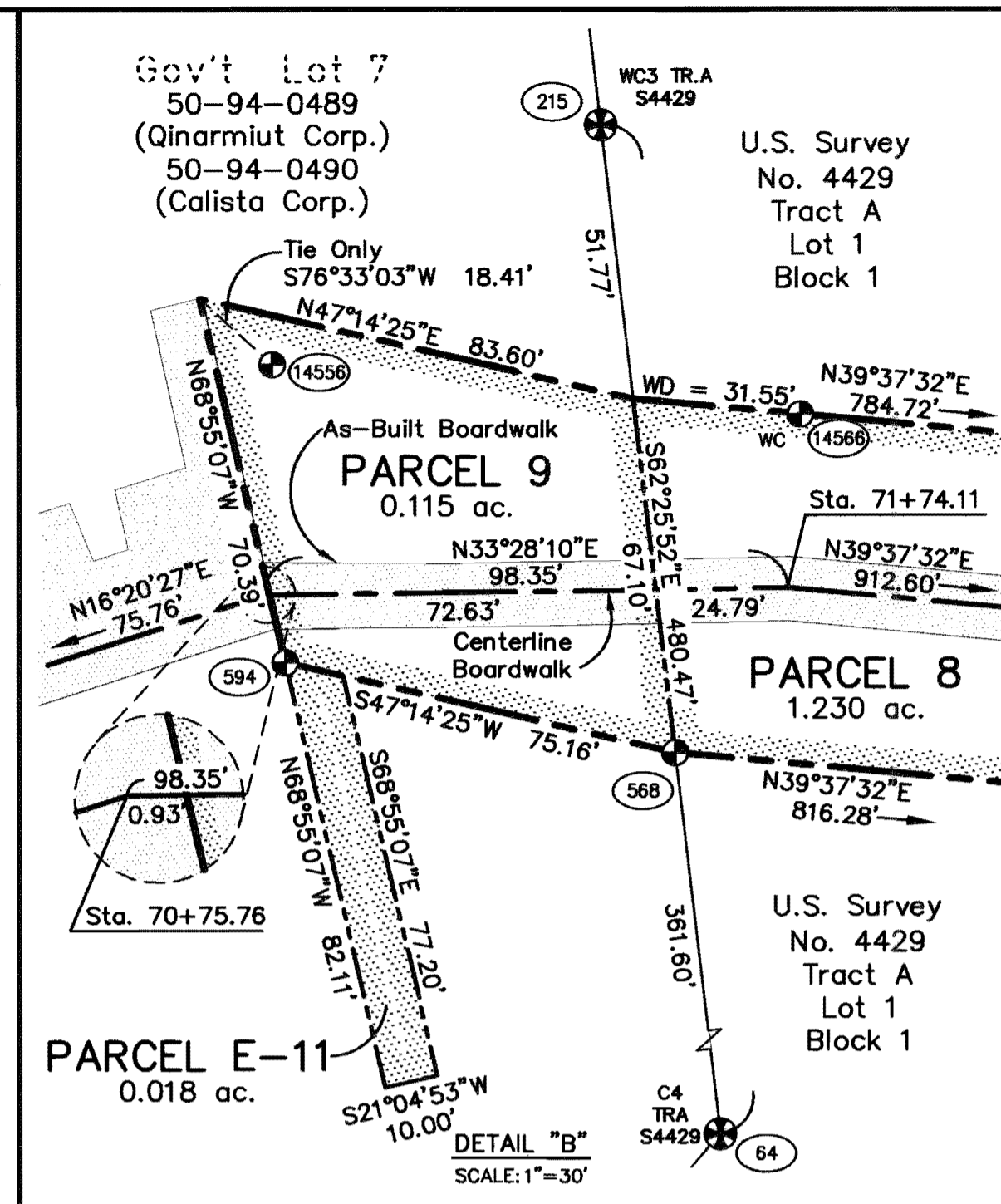
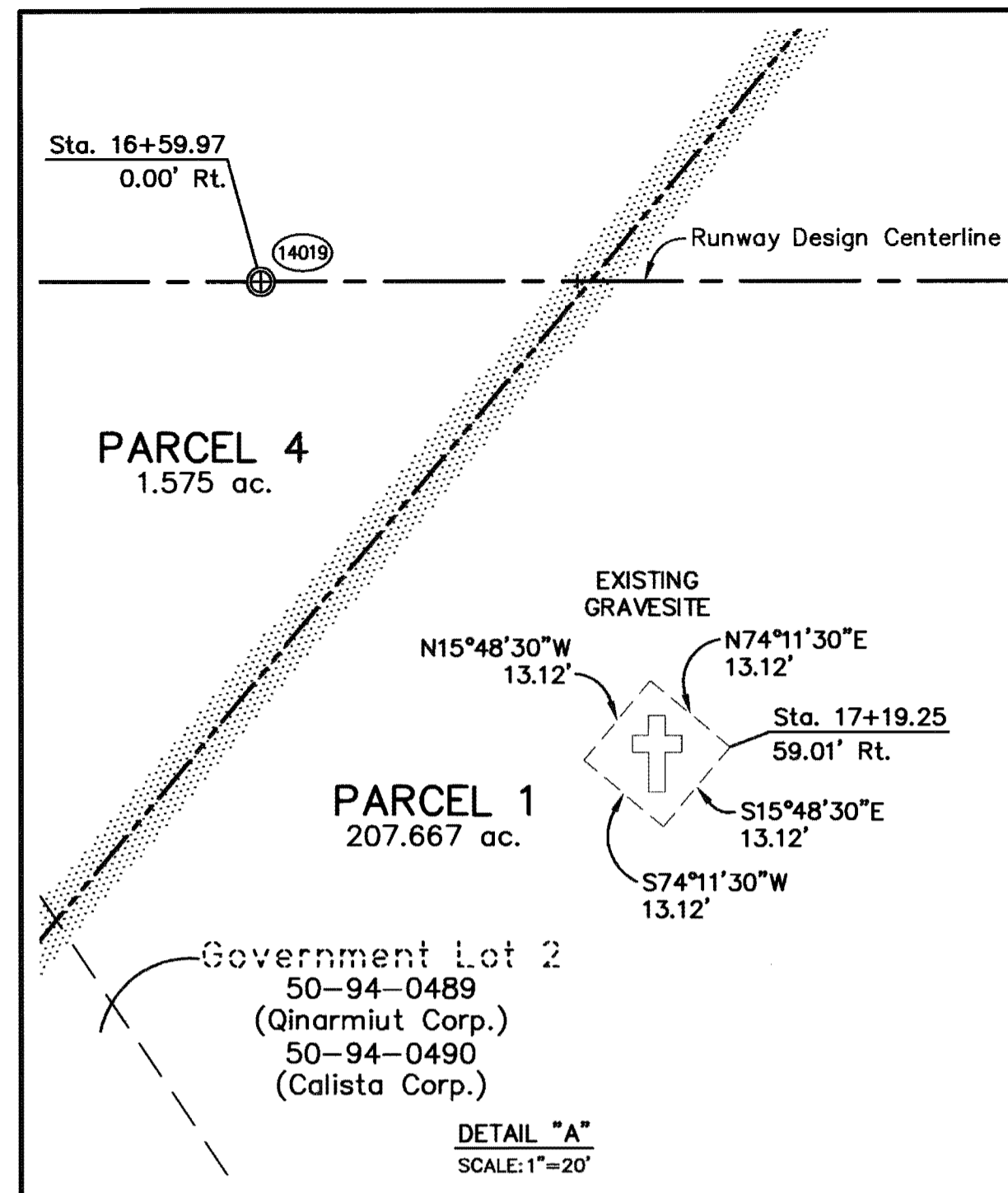
DRAWN	KSLP	DATE	9/22/10	SHEET	2 OF 4
CHECKED	RHB	SCALE	1"=300'	DNR FILE No.	PA20100036



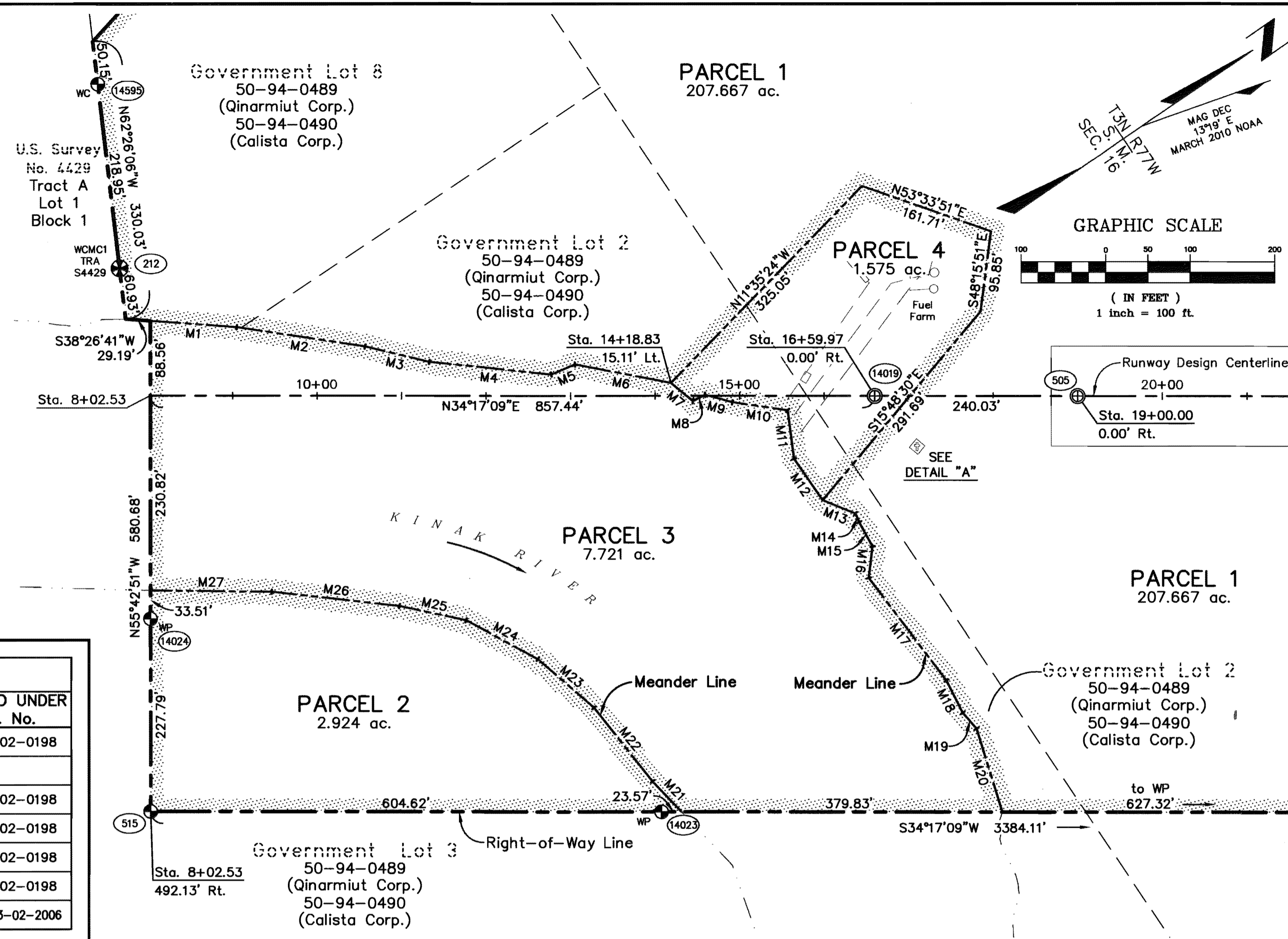
BETHEL PLAT 2010-9

Z:\project\1378.02 Tuntutuliak Airport\Survey\Acad\Tuntutuliak_ROW-Acq-2005.dwg
Plotted 9/22/2010 12:08 PM by Hank Brinker

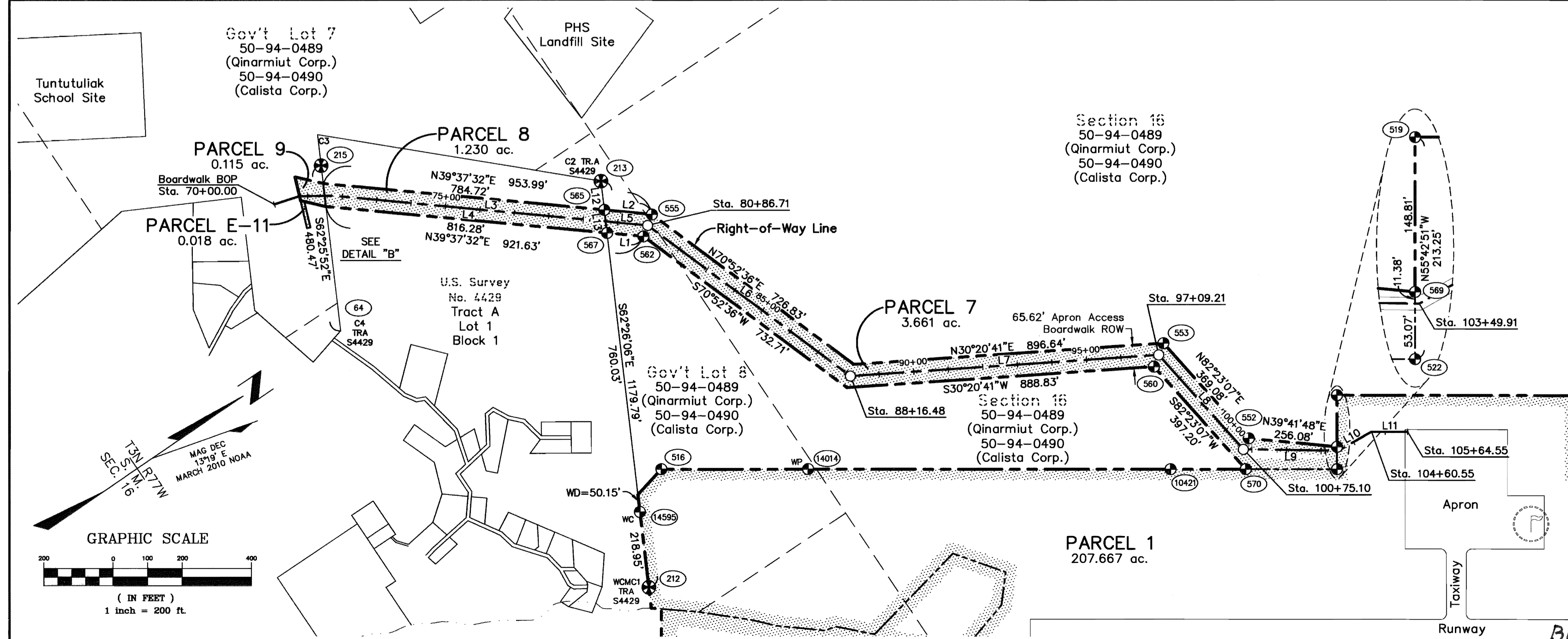
Z:\project\1378.02 Tuntutuliak Airport\Survey\Acad\Tuntutuliak_ROW-Acq-2005.dwg
 Plotted 9/22/2010 12:10 PM by Hank Brinker



LINE	BEARING	DISTANCE
M1	N38°26'33"E	102.85'
M2	N42°50'54"E	153.66'
M3	N47°46'00"E	78.18'
M4	N40°05'06"E	144.89'
M5	N11°18'02"E	30.35'
M6	N45°17'29"E	115.79'
M7	N74°01'31"E	33.66'
M8	N06°45'24"E	16.32'
M9	N49°39'24"E	33.43'
M10	N42°25'58"E	66.18'
M11	S63°10'57"E	58.05'
M12	N89°46'19"E	59.56'
M13	N56°06'04"E	41.91'
M14	S78°11'13"E	11.11'
M15	S84°55'25"E	32.69'
M16	S48°51'52"E	37.73'
M17	N87°11'16"E	152.14'
M18	S82°37'23"E	42.61'
M19	N83°04'14"E	24.75'
M20	S72°50'12"E	103.17'
M21	S80°37'19"W	49.29'
M22	S85°51'51"W	111.53'
M23	S75°16'24"W	87.91'
M24	S62°32'58"W	96.20'
M25	S46°19'21"W	80.68'
M26	S40°36'05"W	152.13'
M27	S34°52'49"W	143.66'

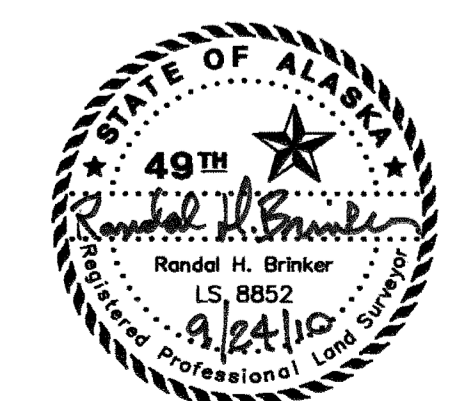


PROPERTY STATUS								
PARCEL No.	INTEREST TO BE ACQUIRED	GRANTOR	GRANTEE	LARGER PARCEL	NET TAKE	REMAINDER	RECORDED DOC. No.	ACQUIRED UNDER A.I.P. No.
PARCEL 2	Fee Simple	Qinarmuit Corporation - Surface	State of Alaska DOT&PF	Large	2.924 ac.	Large	Bk. 80 Pg. 776	3-02-00302-0198
PARCEL 3	ILMA	Alaska Dept. of Natural Resources	State of Alaska DOT&PF	Large	7.721 ac.	Large	Bk. 80 Pg. 784	ADL 227496
PARCEL 4	Easement & Restrictive Covenant	Qinarmuit Corporation - Surface	State of Alaska DOT&PF	Large	1.575 ac.	Large	Bk. 81 Pg. 537	3-02-00302-0198
PARCEL 7	Fee Simple	Qinarmuit Corporation - Surface	State of Alaska DOT&PF	Large	3.661 ac.	Large	Bk. 80 Pg. 792	3-02-00302-0198
PARCEL 8	Fee Simple	Qinarmuit Corporation - Surface	State of Alaska DOT&PF	Large	1.230 ac.	Large	Bk. 80 Pg. 797	3-02-00302-0198
PARCEL 9	Fee Simple	Qinarmuit Corporation - Surface	State of Alaska DOT&PF	Large	0.115 ac.	Large	Bk. 80 Pg. 776	3-02-00302-0198
PARCEL E-11	Easement	Qinarmuit Corporation - Surface	State of Alaska DOT&PF	Large	0.018 ac.	Large	Bk. 80 Pg. 784	3-02-00302-0198
PARCEL E-11	Easement	Tuntutuliak Traditional Council	State of Alaska DOT&PF	16.519 ac.	1.230 ac.	Large	Bk. 90 Pg. 630	3-02-00302-0198
PARCEL 2	Fee Simple	Qinarmuit Corporation - Surface	State of Alaska DOT&PF	Large	0.115 ac.	Large	Bk. 80 Pg. 776	3-02-00302-0198
PARCEL 9	Fee Simple	Qinarmuit Corporation - Surface	State of Alaska DOT&PF	Large	0.115 ac.	Large	Bk. 80 Pg. 784	3-02-00302-0198
PARCEL E-11	Easement	Qinarmuit Corporation - Surface	State of Alaska DOT&PF	Large	0.018 ac.	Large	2009-001343-0	03-02-0303-02-2006



LINE	BEARING	DISTANCE
L1	N39°37'32"E	105.34'
L2	N39°37'32"E	137.72'
L3	N39°37'32"E	912.60'
L4	N39°37'32"E	791.07'
L5	N39°37'32"E	121.53'
L6	N70°52'36"E	729.77'
L7	N30°20'41"E	892.73'
L8	N82°23'07"E	365.88'
L9	N35°08'50"E	274.81'
L10	N04°33'13"E	110.64'
L11	N34°17'09"E	104.00'
L12	S62°26'06"E	83.56'
L13	S62°26'06"E	67.10'

- LEGEND (See Monument Descriptions Sheet 4)**
- BLM MONUMENT
 - PRIMARY SURVEY CONTROL MONUMENT
 - PRIMARY CENTERLINE MONUMENT
 - SECONDARY MONUMENT
 - PRIMARY MONUMENT
 - SURVEY POINT NUMBER
 - RIGHT-OF-WAY ACQUIRED
 - UNSURVEYED SECTIONAL LINES, SEE NOTE 8



Bethel Recording District
 State Business - No Fee

DATE	REVISIONS	BY

STATE OF ALASKA
 DEPARTMENT OF TRANSPORTATION & PUBLIC FACILITIES
 AKSAS Project No. 55695

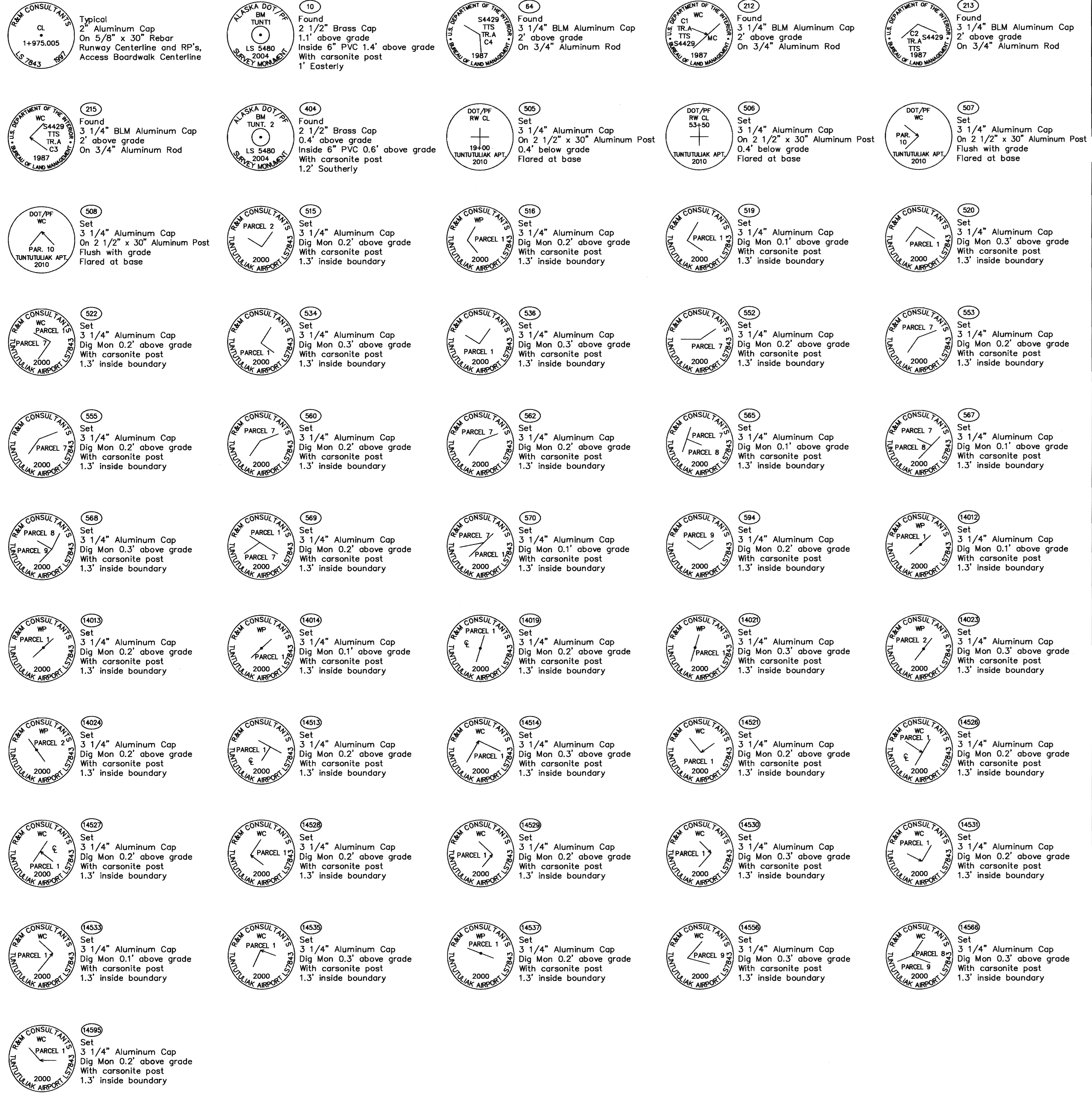
TUNTUTULIAK AIRPORT
 RIGHT OF WAY ACQUISITION PLAT

Within Sections 9, 10, 15, and 16,
 T3N, R77W, Seward Meridian, Alaska

DRAWN	KSLP	DATE	9/22/10	SHEET	3 OF 4
CHECKED	RHB	SCALE	As Shown	DNR FILE No.	PA20100036

BETHEL PLAT 2010-9

Z:\project\1378.02 Tuntutuliak Airport\Survey\Acad\Tuntutuliak_ROW-Acq-v2005.dwg
 Plotted 9/22/2010 12:09 PM by Hank Brinker



Point	Northing	Easting	MONUMENTS RECOVERED					
			Runway 02-20 Centerline		Runway 11-29 Centerline		Access Road Centerline	
			Station	Offset	Station	Offset	Station	Offset
10	50000.0000	30000.0000	35+52.65	340.01				
64	47654.6463	26912.1662					72+31.44	386.43
212	47974.4885	28024.5429	7+66.28	-151.18				
213	48520.4412	26978.6701					79+40.71	-114.52
215	47877.0155	26486.2520					71+40.27	-87.57
404	51139.6946	29752.7195	43+55.01	-506.32				

Point	Northing	Easting	MONUMENTS SET					
			Runway 02-20 Centerline		Runway 11-29 Centerline		Access Road Centerline	
			Station	Offset	Station	Offset	Station	Offset
505	48826.0490	28788.1025	19+00.00	0.00				
506	51676.5717	30731.5584	53+50.00	0.00				
507	52523.5132	31613.0663	65+46.35	251.24				
508	52878.6252	31092.2135	65+46.35	-379.15				
515	47642.0502	28576.4858	8+02.53	492.13				
516	48196.4984	27763.2606	8+02.53	-492.13				
519	49929.5255	28686.7174	27+54.62	-705.38				
520	50498.7831	29074.8311	34+43.60	-705.38				
522	49809.3951	28862.9164	27+54.62	-492.13			103+46.72	53.06
534	51251.4020	31037.3032	51+70.94	492.12	225+58.91	-492.12		
536	51814.1697	30229.7501	51+81.01	-492.13	215+74.61	-492.13		
552	49648.6622	28646.1039					100+90.48	-31.69
553	49599.7556	28280.2812					* 97+10 ±	* -33 ±
555	48587.8470	27140.5755					* 80+87 ±	* -33 ±
560	49538.9621	28320.7257					97+25.23	32.81
562	48531.8634	27179.4107					80+77.53	32.81
565	48481.7738	27052.7440					79+58.17	-32.81
567	48450.7243	27112.2255					79+72.19	32.81
568	47822.0000	26591.6256					71+52.49	30.67
569	49845.6990	28809.6681	27+54.62	-556.57			103+45.75	-11.38
570	49591.5952	28714.4225	24+91.02	-492.13			100+83.15	57.03
594	47770.9748	26536.4454					70+79.50	12.78
14012	49867.5290	30093.7934	34+96.03	492.13				
14013	48993.2421	29497.7141	24+37.88	492.13				
14014	48546.9370	28002.1858	12+26.66	-492.13				
14019	48627.7247	28652.8871	16+59.97	0.00				
14021	49412.1298	28592.0650	22+73.81	-492.13				
14023	48141.6146	28917.0834	14+07.15	492.12				
14024	47770.3686	28388.2774	8+02.53	264.34				
14513	52541.1040	31320.9873	63+96.35	0.00				
14514	52614.4153	30775.3491	61+49.55	-492.13				
14521	50540.8379	29361.6063	36+39.89	-492.13				
14526	50549.1196	31184.3127			230+81.05	0.00		
14527	52616.1535	28218.1867			194+65.73	0.00		
14528	52325.5875	27774.3927			192+67.76	492.12		
14529	52763.9595	28866.8329			199+13.39	-492.13		
14530	50958.2230	31458.0056			230+71.69	-492.13		
14531	49986.0123	31131.6063			233+59.76	492.12		
14533	51858.1715	31450.9923	59+05.32	492.13				
14535	50174.8169	30860.6779			230+29.53	492.12		
14537	51636.7763	28762.8140			204+72.51	492.13		
14556	47800.5765	26488.6750					70+77.85	-43.40
14566	47877.3570	26552.2710					* 71+75 ±	* -33 ±
14595	48075.8090	27830.4447	7+40.65	-368.63				

* Approximate value due to PI blind spot. Unable to project to alignment.

2010-9
 BETHEL REC DIST
 DATE 10-25 2010
 TIME 10:16 AM
 Requested by _____
 Address _____



Bethel Recording District
 State Business - No Fee

STATE OF ALASKA
 DEPARTMENT OF TRANSPORTATION & PUBLIC FACILITIES
 AKSAS Project No. 55695

TUNTUTULIAK AIRPORT
 RIGHT OF WAY ACQUISITION PLAT

Within Sections 9, 10, 15, and 16,
 T3N, R77W, Seward Meridian, Alaska

DRAWN	KSLP	DATE	9/22/10	SHEET	4 OF 4
CHECKED	RHB	SCALE	N/A	DNR FILE NO.	PA20100036

BETHEL PLAT 2010-9