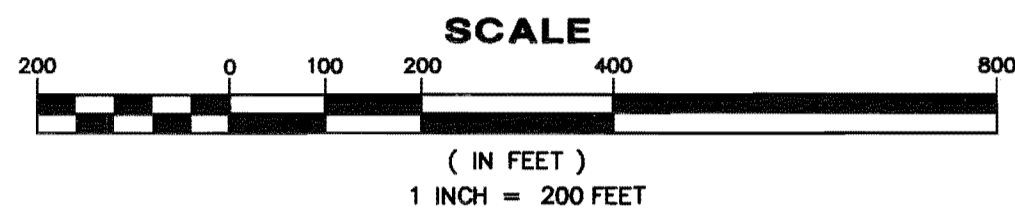
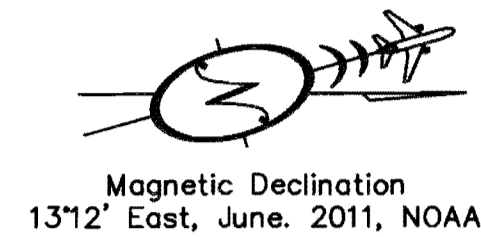
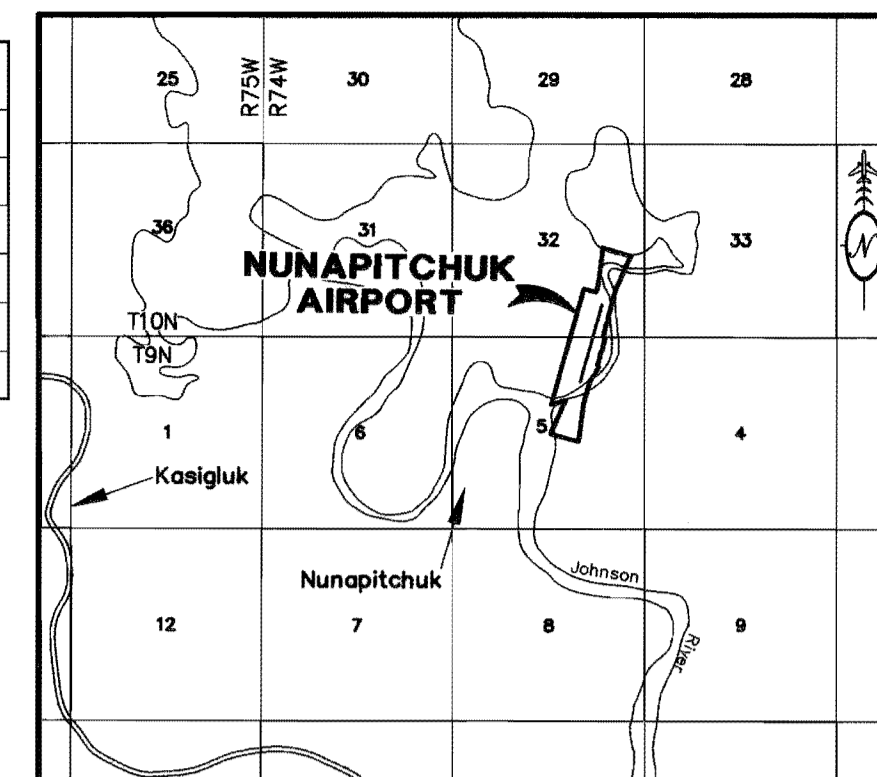


LINE	DIRECTION	LENGTH
M1	S 72°52'20" W	148.60'
M2	S 74°35'28" W	67.92'
M3	S 88°31'36" W	83.62'
M4	S 61°22'20" W	99.48'
M5	S 05°41'05" E	138.83'
M6	S 15°48'49" W	428.60'
M7	S 18°33'10" W	341.72'
M8	S 13°02'40" W	101.80'
M9	S 23°43'54" W	92.64'
M10	S 30°39'24" W	94.58'



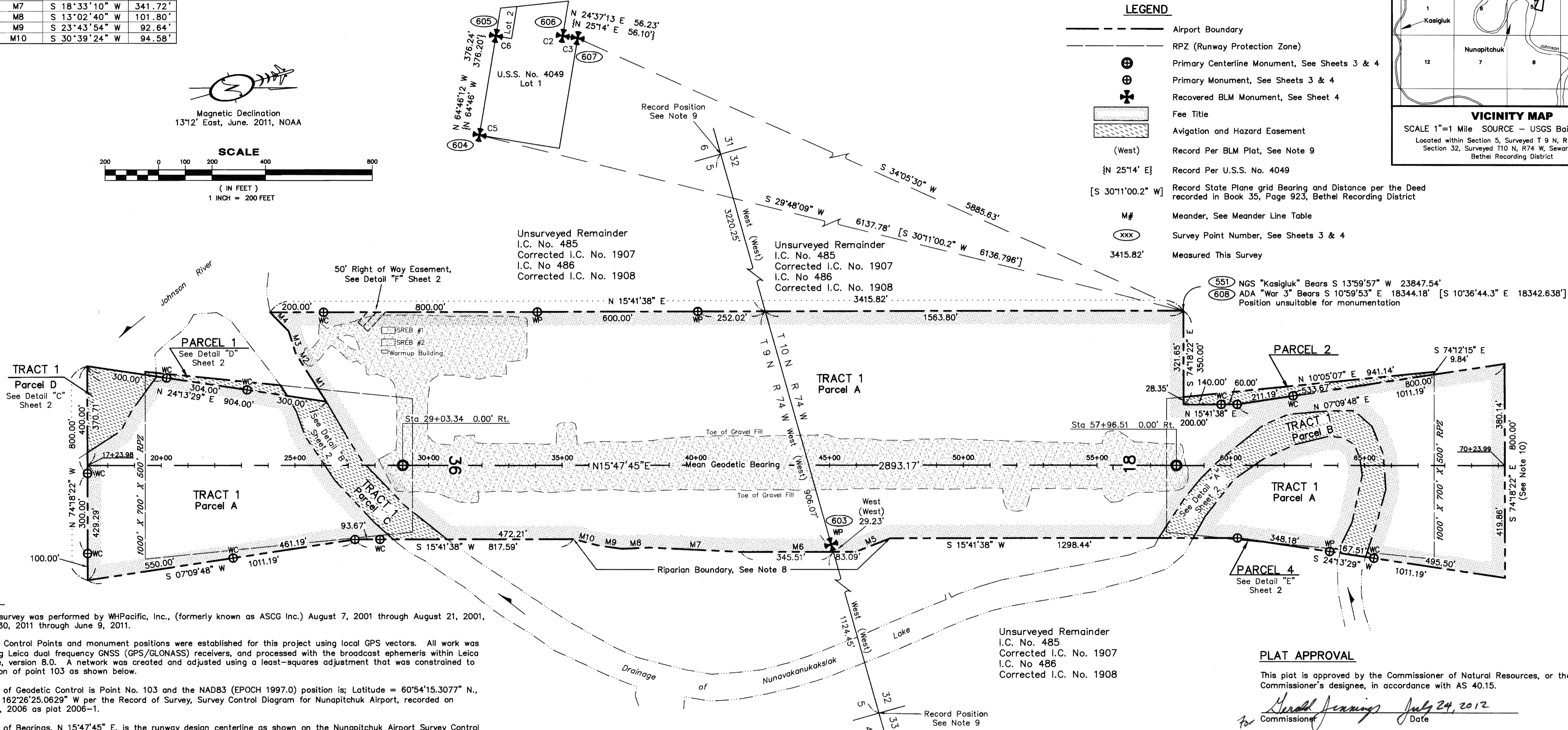
PARCEL NO.	INTEREST	GRANTOR	GRANTEE	NET AREA	RECORDED DOCUMENT NO.	DATE ACQUIRED
TR 1, Parcel A	FEE (with reversionary clause)	Nunapitchuk Limited	STATE OF ALASKA, DOT/PF	89.16 AC ±	1983-001041-0	September 8, 1983
TR 1, Parcels B,C,D	PERMIT A & H EASEMENT	STATE OF ALASKA, DNR	STATE OF ALASKA, DOT/PF	6.13 AC ±	1985-000572-0	June 12, 1985
Parcel 1	A & H Easement	Nunapitchuk Limited	STATE OF ALASKA, DOT/PF	0.28 AC ±	2007-001137-0	August 29, 2007
Parcel 2	A & H Easement	Nunapitchuk Limited	STATE OF ALASKA, DOT/PF	0.66 AC	2007-001137-0	August 29, 2007
Parcel 4	A & H Easement	Nunapitchuk Limited	STATE OF ALASKA, DOT/PF	0.01 AC	2007-001137-0	August 29, 2007
50' ROW Easement	50' ROW Easement	Nunapitchuk Limited	ALASKA VILLAGE ELECTRIC COOPERATIVE, INC.	0.09 AC	2006-000029-0	January 5, 2006



VICINITY MAP
 SCALE 1"=1 Mile SOURCE - USGS Baird Inlet D-2
 Located within Section 5, Surveyed T 9 N, R 74 W and Section 32, Surveyed T10 N, R74 W, Seward Meridian Bethel Recording District

LEGEND

- Airport Boundary
- RPZ (Runway Protection Zone)
- ⊕ Primary Centerline Monument, See Sheets 3 & 4
- ⊕ Primary Monument, See Sheets 3 & 4
- ⊕ Recovered BLM Monument, See Sheet 4
- ▨ Fee Title
- ▨ Avigation and Hazard Easement
- (West) Record Per BLM Plat, See Note 9
- {N 25°14' E} Record State Plane grid Bearing and Distance per the Deed recorded in Book 35, Page 923, Bethel Recording District
- M# Meander, See Meander Line Table
- ⊙ Survey Point Number, See Sheets 3 & 4
- 3415.82' Measured This Survey



NOTES

- The field survey was performed by WHPacific, Inc., (formerly known as ASCG Inc.) August 7, 2001 through August 21, 2001, and May 30, 2011 through June 9, 2011.
- Horizontal Control Points and monument positions were established for this project using local GPS vectors. All work was done using Leica dual frequency GNSS (GPS/GLONASS) receivers, and processed with the broadcast ephemeris within Leica Geo Office, version 8.0. A network was created and adjusted using a least-squares adjustment that was constrained to the position of point 103 as shown below.
- The Basis of Geodetic Control is Point No. 103 and the NAD83 (EPOCH 1997.0) position is; Latitude = 60°54'15.3077" N., Longitude 162°26'25.0629" W per the Record of Survey, Survey Control Diagram for Nunapitchuk Airport, recorded on January 3, 2006 as plat 2006-1.
- The Basis of Bearings, N 15°47'45" E, is the runway design centerline as shown on the Nunapitchuk Airport Survey Control Sheet, Sheet C3 of the Airport Improvement Plan Set titled "Nunapitchuk, Alaska Airport Improvement Program Project No. 54850 A.I.P. No. 3-02-0446-001-2007".
- The bearings shown are local plane bearings as oriented to the Basis of Bearings, unless noted otherwise.
- All distances shown hereon are in U.S. Survey Feet unless otherwise noted. Distances shown are reduced to horizontal ground distances.
- Runway stationing is based on the Nunapitchuk Airport Survey Control Sheet, Sheet C3 of the Airport Improvement Plan Set titled "Nunapitchuk, Alaska Airport Improvement Program Project No. 54850 A.I.P. No. 3-02-0446-001-2007" dated June 2007.
- The meanders for Tract 1 Parcel D, and Meander lines 5 through 10 were surveyed in 2011 by WHPacific, Inc., all other meanders shown were surveyed in 2001 by WHPacific, Inc. Meander lines shown hereon do not represent mean high water lines. At the time of survey in 2011, the spring runoff water level was higher than mean high water, therefore mean high water was not observable or located during the survey. All riparian boundaries in the vicinity of the meander lines are approximate and subject to change over time.
- All rectangular lines shown are based on record information from BLM Cadastral Plats for Township 9 North, Range 74 West S.M. and Township 10 North, Range 74 West S.M. from the position of the monument found at the WP between Sec. 5, T9N, R74W and Sec. 32, T10N, R74W.
- While setting the Airport Boundary monumentation in 2011, the spring runoff water level was high, making the north boundary line unsuitable for monumentation. Witness Corners were set as close to the northern boundary line as possible.
- Notes continued on Sheet 3.

Unsurveyed Remainder
 I.C. No. 485
 Corrected I.C. No. 1907
 I.C. No. 486
 Corrected I.C. No. 1908

Unsurveyed Remainder
 I.C. No. 485
 Corrected I.C. No. 1907
 I.C. No. 486
 Corrected I.C. No. 1908

SURVEYOR'S CERTIFICATE

I hereby certify that I am properly Registered and Licensed to practice Land Surveying in the State of Alaska, and that this plat represents a survey made by me or under my direct supervision, that the monuments shown hereon actually exist as described, and that all dimensions and other details are correct.

Tallak D. Maakestad LS-9235 Date 6/28/2012

PLAT APPROVAL

This plat is approved by the Commissioner of Natural Resources, or the Commissioner's designee, in accordance with AS 40.15.

Harold Jennings July 24, 2012
 Commissioner Date

Bethel Recording District
 State Business - No Fee

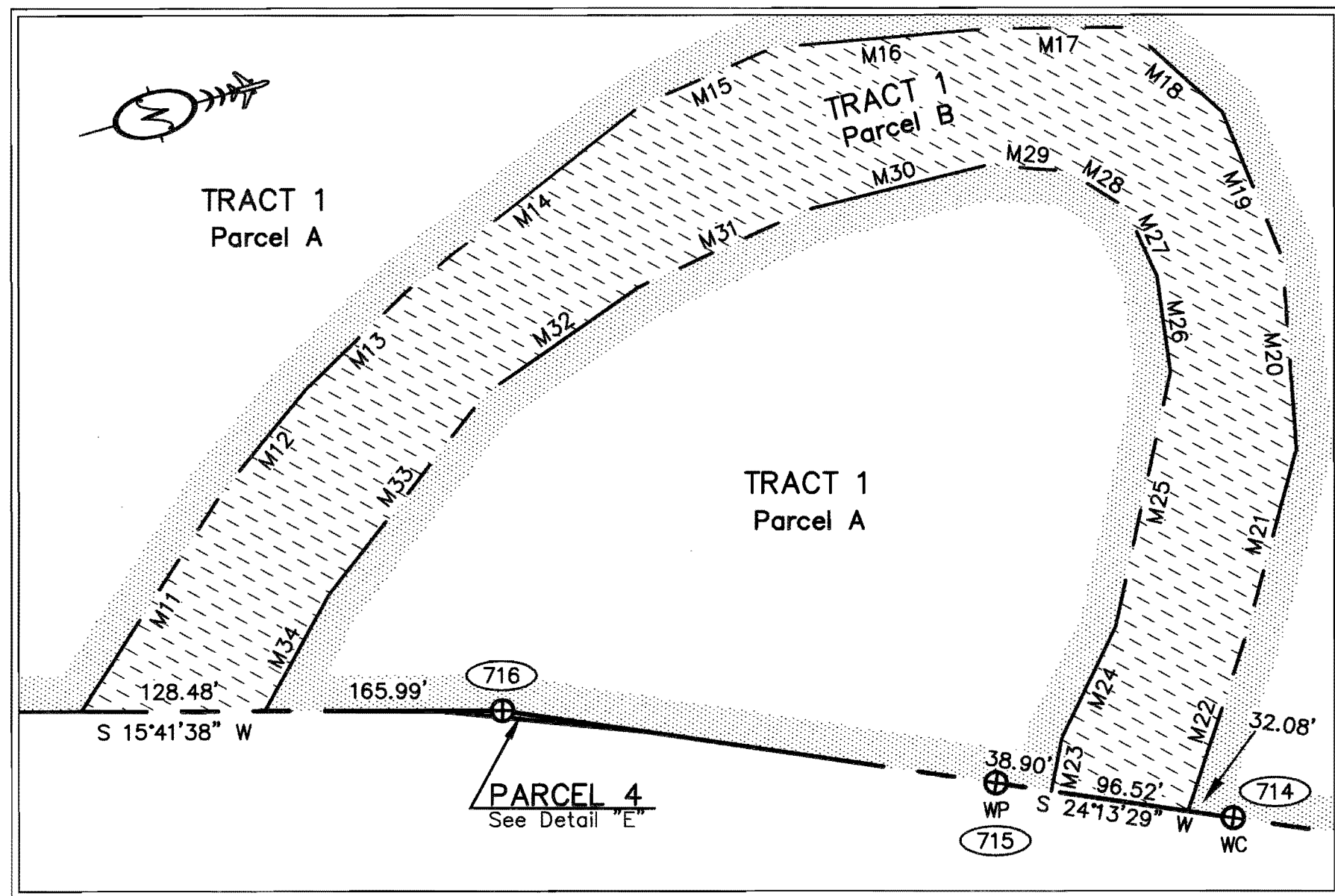
STATE OF ALASKA
DEPARTMENT OF TRANSPORTATION
 &
PUBLIC FACILITIES
RIGHT-OF-WAY ACQUISITION PLAT

NUNAPITCHUK AIRPORT
 PROJECT No. 54850

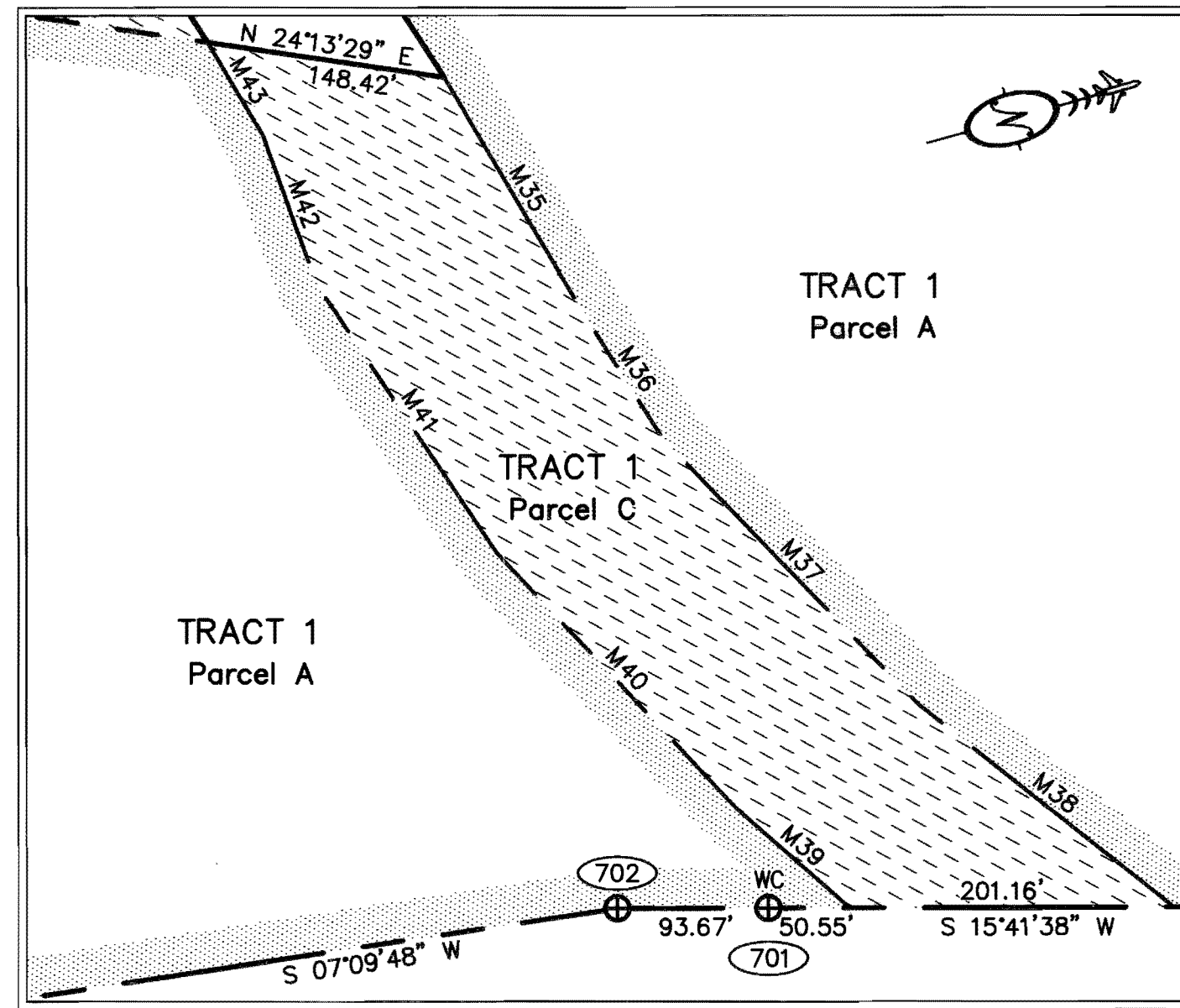
Within Sec. 5, T9N R74W, and Sec. 32, T10N, R74W, Seward Meridian, Alaska

PREPARED BY:
WHPACIFIC, INC.

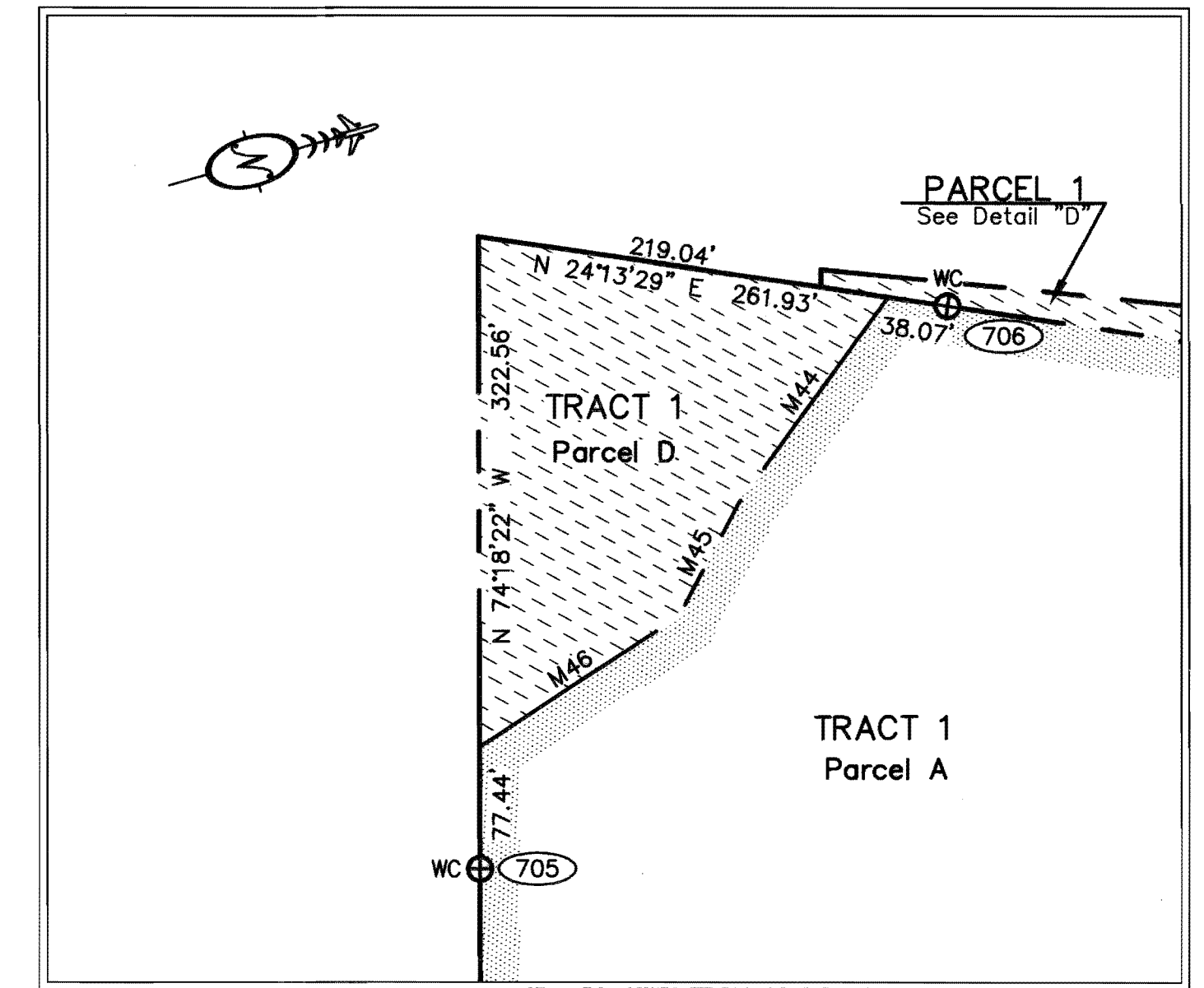
DRAWN: CAW	SURVEY DATE: JUNE 2011	SCALE: 1" = 200'	SHEET: 1 of 4
CHECKED: GEL/TDM	DRAWN DATE: JUNE 2012	FILE NO. PA20110045	



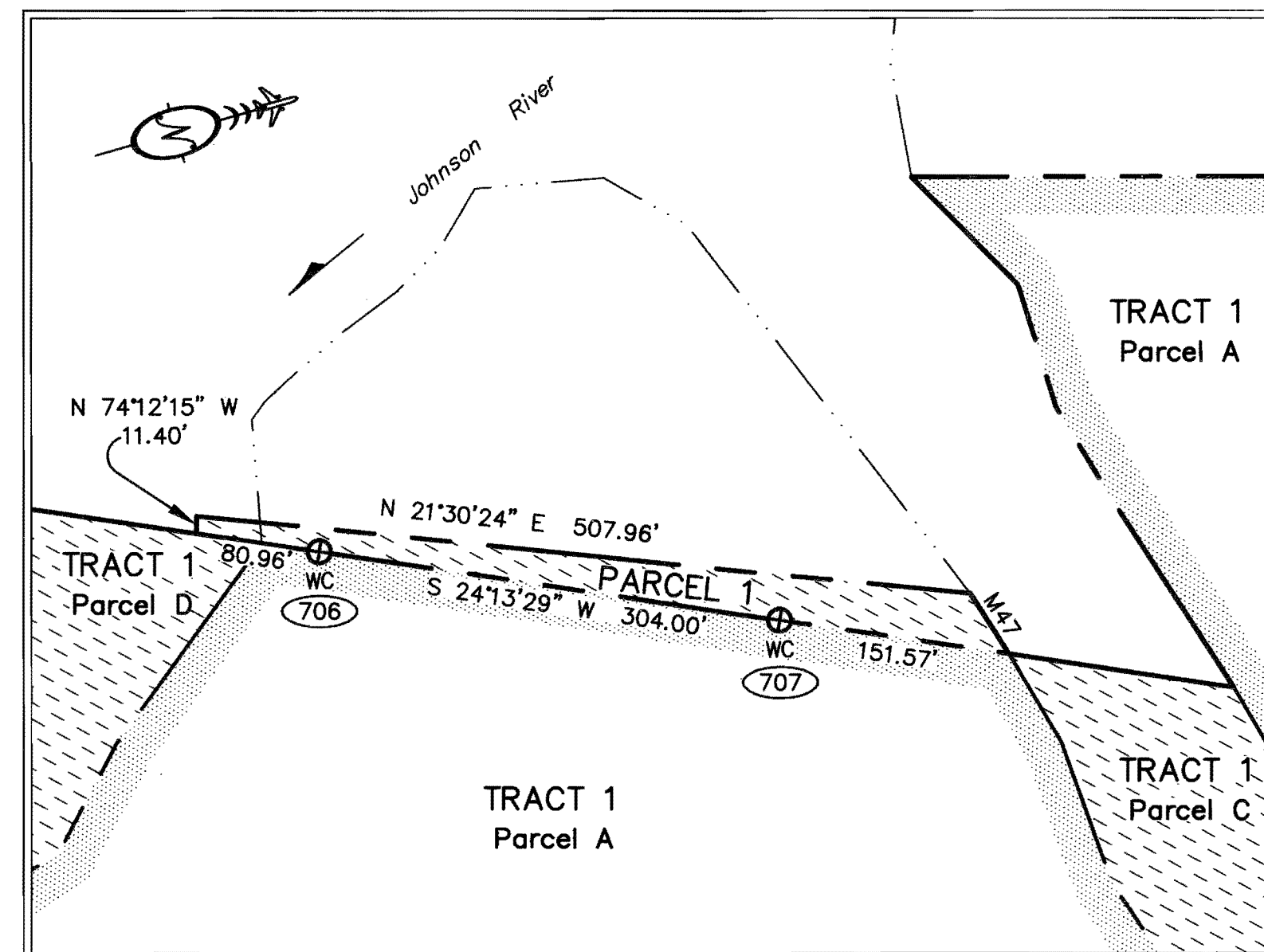
DETAIL "A" - TRACT 1 PARCEL B
Scale 1"=100'



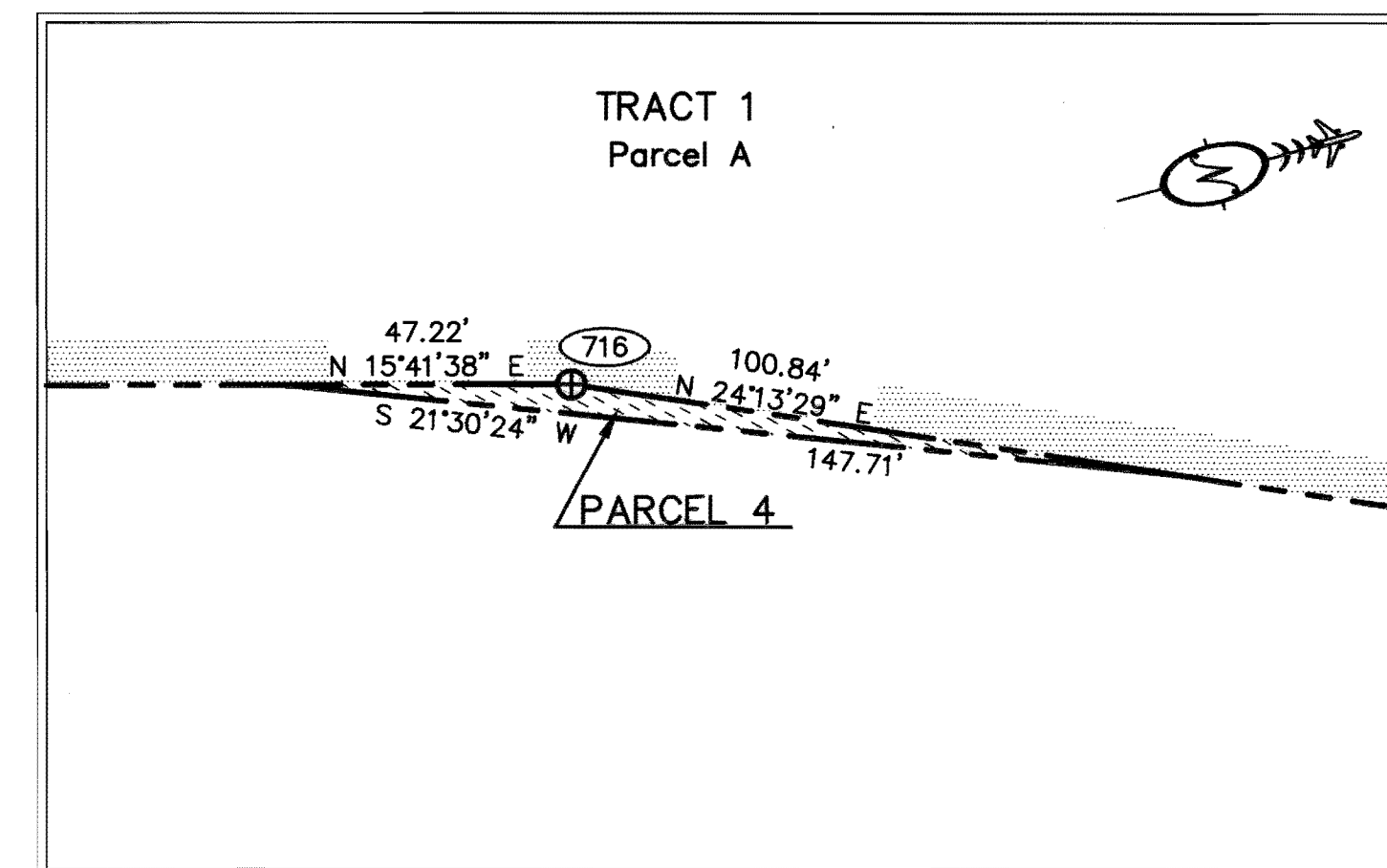
DETAIL "B" - TRACT 1 PARCEL C
Scale 1"=100'



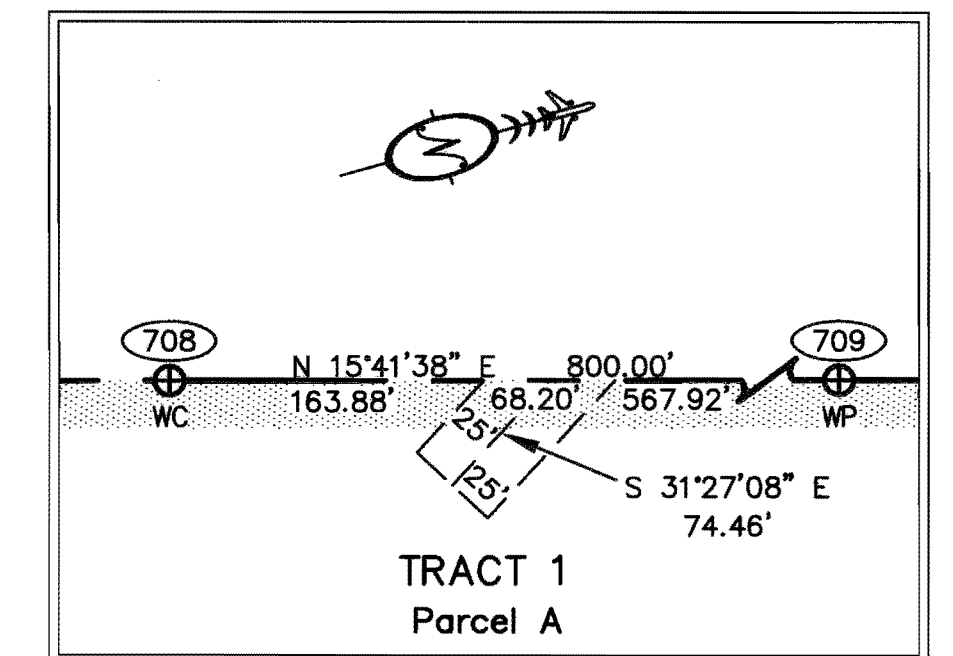
DETAIL "C" - TRACT 1 PARCEL D
Scale 1"=100'



DETAIL "D" - PARCEL 1
Scale 1"=100'



DETAIL "E" - PARCEL 4
Scale 1"=30'



DETAIL "F"
50' Right of Way Easement
Scale 1"=100'

MEANDER LINE TABLE

LINE	DIRECTION	LENGTH
M11	N 41°18'41" W	182.83'
M12	N 34°48'46" W	91.53'
M13	N 28°23'49" W	97.95'
M14	N 22°47'09" W	208.39'
M15	N 07°48'21" W	101.43'
M16	N 10°52'41" E	150.08'
M17	N 15°08'50" E	98.81'
M18	N 57°55'05" E	88.22'
M19	N 83°37'55" E	110.62'
M20	S 78°26'42" E	133.25'
M21	S 59°01'27" E	134.96'
M22	S 55°53'10" E	129.25'
M23	N 62°47'04" W	38.70'
M24	N 48°17'07" W	85.62'
M25	N 61°56'36" W	181.33'
M26	N 82°19'35" W	67.75'
M27	S 81°12'17" W	52.82'
M28	S 48°14'19" W	47.80'
M29	S 19°54'14" W	56.54'
M30	S 01°54'25" W	128.04'
M31	S 08°51'20" E	130.44'
M32	S 19°00'45" E	131.08'
M33	S 36°14'23" E	177.20'
M34	S 45°14'38" E	92.37'
M35	N 75°27'58" E	171.56'
M36	N 73°11'53" E	91.86'
M37	N 61°49'58" E	226.73'
M38	N 54°19'27" E	202.97'
M39	S 57°18'22" W	94.85'
M40	S 62°36'19" W	216.36'
M41	S 71°55'53" W	200.20'
M42	S 86°10'23" W	98.71'
M43	S 75°02'46" W	66.79'
M44	S 38°09'29" E	160.64'
M45	S 46°17'05" E	81.17'
M46	S 17°26'14" E	150.64'
M47	N 73°09'42" E	46.91'

LEGEND

- Airport Boundary
- Primary Monument, See Sheets 3 & 4
- Survey Point Number, See Sheets 3 & 4
- Fee Title
- Avigation and Hazard Easement

PREPARED BY:
WHPACIFIC, INC.

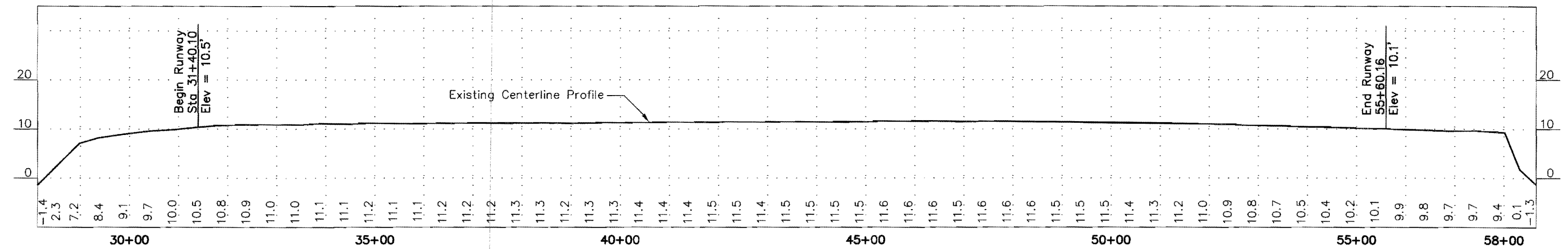
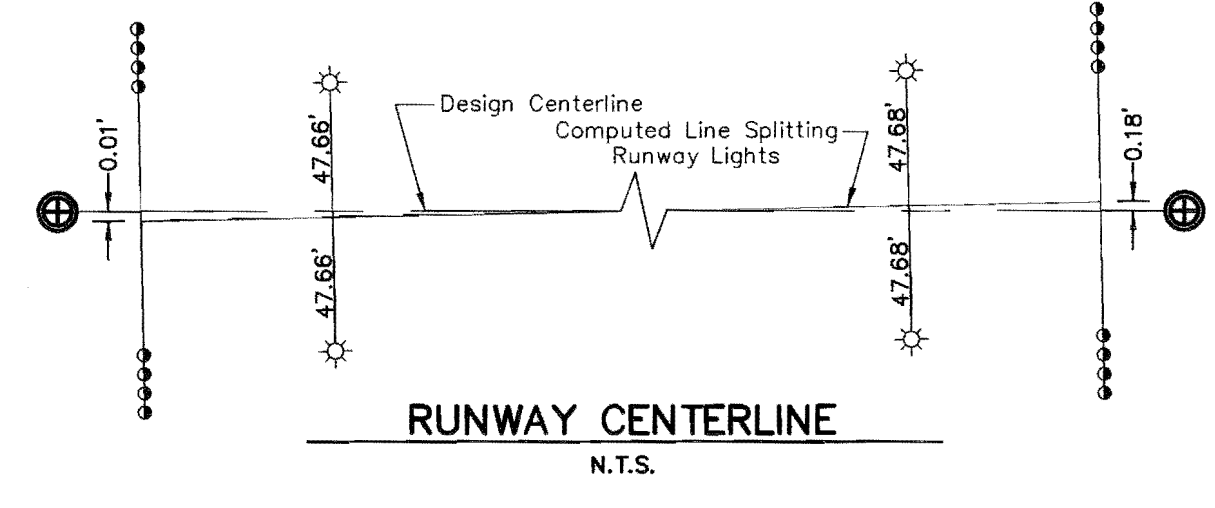
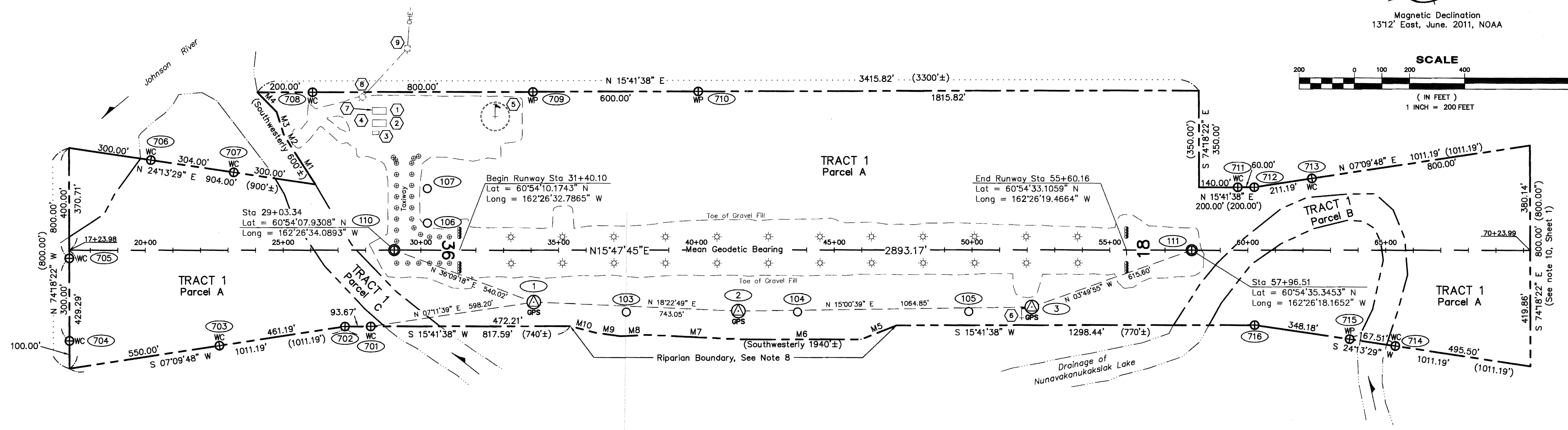
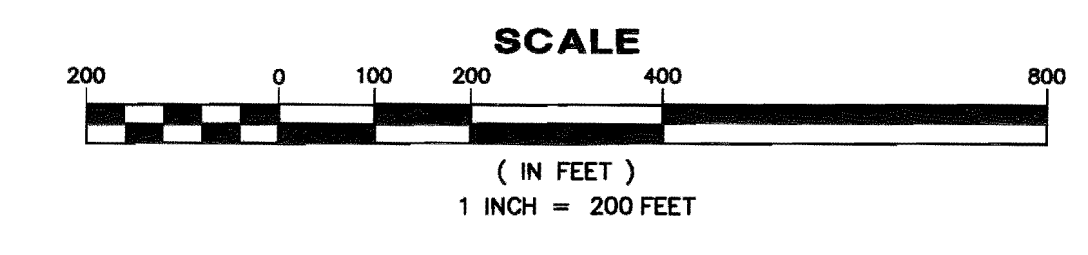


Bethel Recording District
State Business - No Fee

STATE OF ALASKA
DEPARTMENT OF TRANSPORTATION
&
PUBLIC FACILITIES
RIGHT-OF-WAY ACQUISITION PLAT
NUNAPITCHUK AIRPORT
PROJECT No. 54850
Within Sec. 5, T9N R74W, and
Sec. 32, T10N, R74W,
Seward Meridian, Alaska

DRAWN: CAW	SURVEY DATE: JUNE 2011	SCALE: AS NOTED	SHEET: 2 of 4
CHECKED: GEL/TDM	DRAWN DATE: JUNE 2012	FILE NO. PA20110045	

Magnetic Declination
13'12" East, June, 2011, NOAA



- LEGEND**
- Primary Survey Control Monument, Set This Survey
 - Primary Centerline Monument, Set This Survey
 - Primary Monument, Set This Survey
 - Secondary Monument
 - Survey Point Number, See Description Sheet 4
 - Obstruction Number, See Obstruction Table
 - 94.58' Measured This Survey
 - (1011.19') Record Dimension, See Note 13
 - Taxiway Edge Light with Reflective Cone
 - Threshold Light with Reflective Cone
 - Runway Edge Light with Reflective Cone
 - Rotating Beacon
 - Lighted Wind Cone
 - Unlighted Wind Cone
 - Segmented Circle

NOTES CONTINUED

12. Project elevations are based on differential level loops run from Point No. 105, Elevation = 4.04'.
13. The record dimensions shown are from the State of Alaska DOT&PF Nunapitchuk Airport Property Plan dated July 2007, which was based upon the deed recorded in Book 35, Page 923, Bethel Recording District and the Permit, Avigation and Hazard Easement and Right of Way that is recorded in Book 41, Page 262, Bethel Recording District.
14. The Right-of-Way acquisition of the Parcels shown on this Plat, and the airport improvements have been completed.

HORIZONTAL CONTROL

The Coordinates for this Project are in a local surface grid system, expressed in U.S. Survey Feet developed by WHPacific Inc. (Formerly Known as ASCG Inc.) in 2001. The Bearings are based upon the Record of Survey, Survey Control Diagram for Nunapitchuk Airport, recorded on January 3, 2006 as plat 2006-1. The Basis of Coordinates for that project was Point No. 601 which has since been destroyed. Point No. 601 had the following coordinates:
 NAD83 (1997.0) Latitude 60°54'09.0021" N. Longitude 162°26'32.9003" W.
 State Plane Zone 7 2,522,033.89856' N. 1,561,637.69178' E.
 Local Coordinates 100,000.000000 N. 50,000.000000 E.

- To convert from Local Plane Coordinates to NAD83 (1997.0) State Plane Zone 7 Coordinates (U.S. Survey Feet):
1. Rotate local coordinates about Point No. 601 by 0°23'05".
 2. Translate resulting coordinates by +2,422,033.89856 N and +1,511,637.69178 E.
 3. Scale resulting coordinates about Point No. 601 by using 0.9999069955.

The Basis of Bearings, N 15°47'45" E, is the runway design centerline as shown on the Nunapitchuk Airport Survey Control Sheet, Sheet C3 of the Airport Improvement Plan Set titled "Nunapitchuk, Alaska Airport Improvement Program Project No. 54850 A.I.P. No. 3-02-0446-001-2007" dated June 2007.

VERTICAL CONTROL

The Vertical Datum is a Local Orthometric Datum approximating NAVD88 which was established by NGS OPUS solutions from static GPS observation data. The orthometric height contained in the NGS OPUS report is derived by applying the GEOID99 correction to the (GORS) ellipsoid height. The result only approximates NAVD88 because it does not account for the GEOID99 to NAVD88 bias. The NGS OPUS solutions for two eleven hour static GPS observations were used to establish the project elevation of 0.36 feet for Point 601, as shown on the Record of Survey, Survey Control Diagram for Nunapitchuk Airport, recorded on January 3, 2006 as plat 2006-1. Published vertical control points from the Record of Survey have been disturbed. The basis of Vertical Control is Point No. 105, Elevation = 4.04 Feet, referenced from Nunapitchuk Airport Field Book No. 4286, Page 15, dated August 12, 2001.

MEANDER LINE TABLE

Line	Direction	Length
M1	S 72°52'20" W	148.60'
M2	S 74°35'28" W	67.92'
M3	S 88°31'36" W	83.62'
M4	S 61°22'20" W	99.48'
M5	S 05°41'05" E	138.83'
M6	S 15°48'49" W	428.60'
M7	S 18°33'10" W	341.72'
M8	S 13°02'40" W	101.80'
M9	S 23°43'54" W	92.64'
M10	S 30°39'24" W	94.58'

OBSTRUCTION TABLE

Number	Obstruction	Latitude	Longitude	Elevation
1	SREB Roof Peak	60°54'09.027"	162°26'44.052"	34.3'
2	SREB Roof Peak	60°54'08.907"	162°26'43.188"	34.2'
3	Warmup Bldg Roof Peak	60°54'08.530"	162°26'42.508"	23.4'
4	Top of Rotating Beacon	60°54'08.581"	162°26'44.306"	39.7'
5	Top of Lighted Windcone	60°54'12.706"	162°26'41.509"	29.1'
6	Top of Unlighted Windcone	60°54'28.842"	162°26'16.774"	23.0'
7	Top of Antenna on SREB	60°54'08.555"	162°26'44.390"	45.3'
8	Top of Wood Utility Pole	60°54'08.329"	162°26'45.512"	41.0'
9	Top of Wood Utility Pole	60°54'10.351"	162°26'48.051"	39.2'

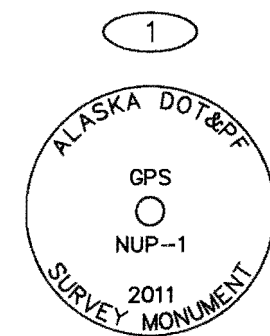
Bethel Recording District
State Business - No Fee

PREPARED BY:
WHPACIFIC, INC.

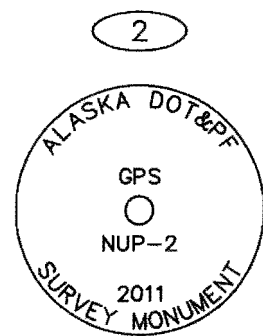


STATE OF ALASKA
DEPARTMENT OF TRANSPORTATION
&
PUBLIC FACILITIES
RIGHT-OF-WAY ACQUISITION PLAT
NUNAPITCHUK AIRPORT
PROJECT No. 54850
Within Sec. 5, T9N R74W, and
Sec. 32, T10N, R74W,
Seward Meridian, Alaska

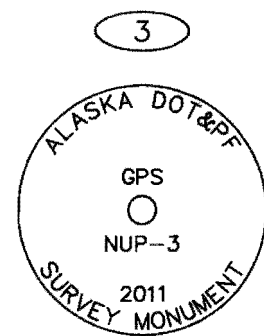
DRAWN: CAW	SURVEY DATE: JUNE 2011	SCALE: 1" = 200'	SHEET: 3 of 4
CHECKED: GEL/TDM	DRAWN DATE: JUNE 2012	FILE NO.: PA20110045	



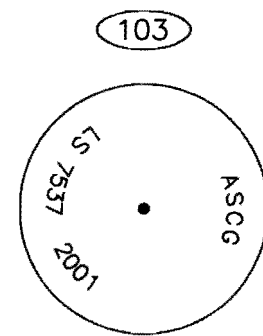
Set 9/16" x 40' Stainless Steel Rod with Datum Point and Brass Donut thru a 36" grease filled fin sleeve inside a 6" x 30" PVC pipe with a rubber cap. Set 3 orange carsonite markers within 2' of monument.



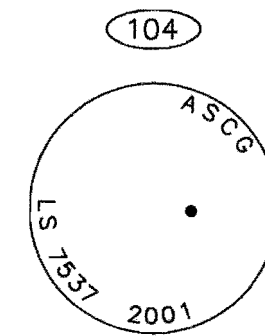
Set 9/16" x 32' Stainless Steel Rod driven to refusal with Datum Point and Brass Donut thru a 36" grease filled fin sleeve inside a 6" x 30" PVC pipe with a rubber cap. Set 3 orange carsonite markers within 2' of monument.



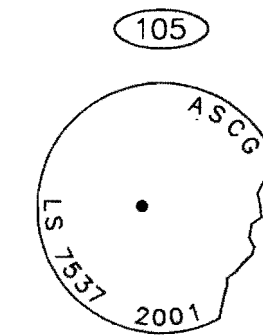
Set 9/16" x 36' Stainless Steel Rod driven to refusal with Datum Point and Brass Donut thru a 36" grease filled fin sleeve inside a 6" x 30" PVC pipe with a rubber cap. Set 3 orange carsonite markers within 3' of monument.



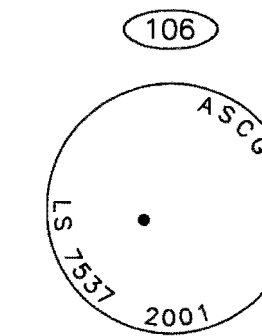
Found 2" Aluminum Cap on 5/8" Rebar 0.4' above grade, Good Condition



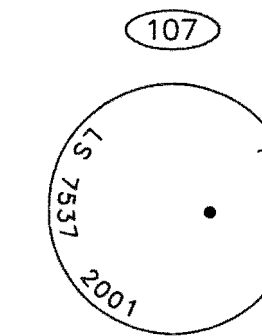
Found 2" Aluminum Cap on 5/8" Rebar flush with grade, Good Condition



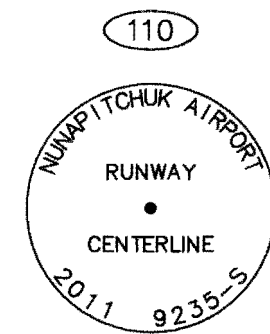
Found 2" Aluminum Cap on 5/8" Rebar 0.4' above grade, Good Condition



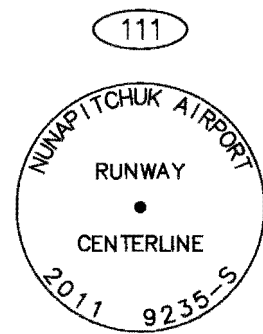
Found 2" Aluminum Cap on 5/8" Rebar 0.5' above grade, Good Condition



Found 2" Aluminum Cap on 5/8" Rebar 0.5' above grade, Good Condition



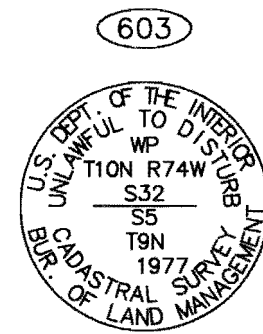
Set 3-1/4" Aluminum Cap on 2-1/2" x 30" Aluminum Post in gravel 1.0' below grade with Deep-1@ magnet



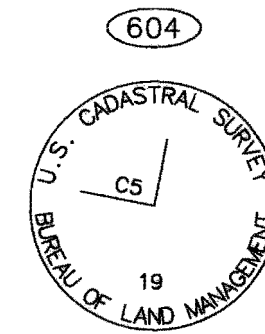
Set 3-1/4" Aluminum Cap on 2-1/2" x 30" Aluminum Post in gravel 0.9' below grade with Deep-1@ magnet



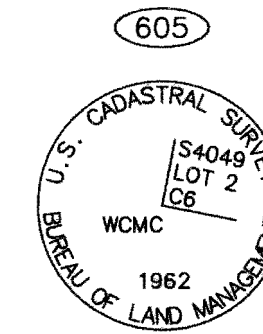
Found 3-1/2" Brass Cap on 1/2" Copperweld Rod 4.4' above grade, Good Condition -Recovered in 2001-



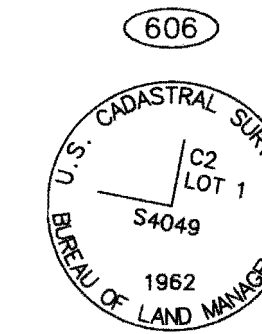
Found 3-1/4" Aluminum Cap on 5/8" Aluminum Rod 1.9' above grade, Good Condition, Cap is facing a Westerly Direction



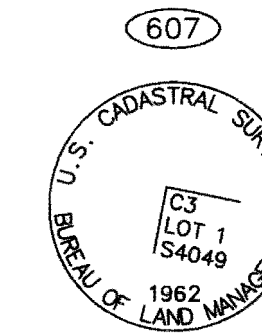
Found 3-1/4" Brass Cap on 2-1/2" Iron Post 0.2' above grade, Good Condition, cap is mostly unreadable -Recovered in 2001-



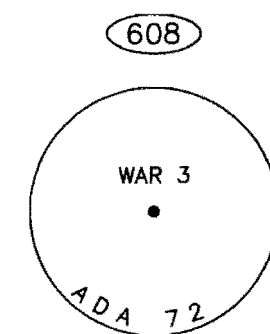
Found 3-1/4" Brass Cap on 2-1/2" Iron Post 0.7' above grade, Good Condition, monument is located under a wooden deck -Recovered in 2001-



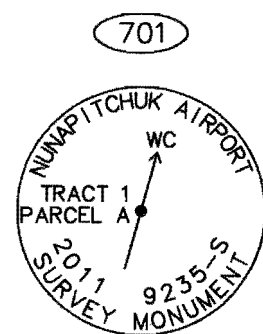
Found 3-1/4" Brass Cap on 2-1/2" Iron Post flush with surface of wooden deck, Good Condition -Recovered in 2001-



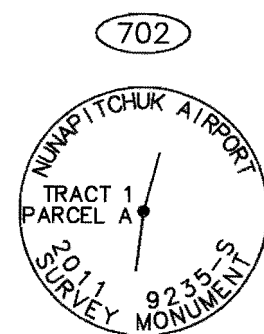
Found 3-1/4" Brass Cap on 2-1/2" Iron Post 0.5' above grade, Good Condition -Recovered in 2001-



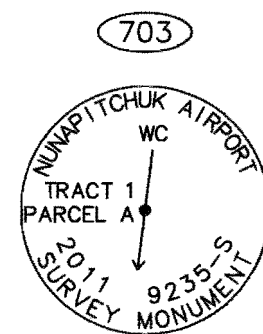
Found 1-1/2" Aluminum Cap on 5/8" Rebar 1.4' out of and bend Southerly parallel to the ground, sighted point of entry -Recovered in 2001-



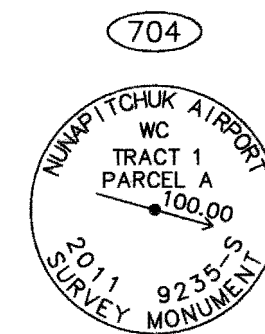
Set 3-1/4" Aluminum Cap on 3/4" x 9" Aluminum Drive Rod flush with grade, Orange Carsonite Marker set Westerly 0.5' from monument



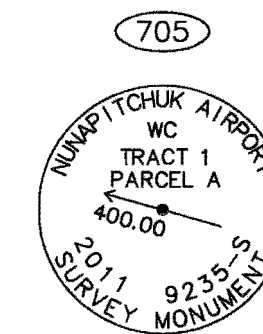
Set 3-1/4" Aluminum Cap on 3/4" x 9" Aluminum Drive Rod flush with grade, Orange Carsonite Marker set Westerly 0.5' from monument



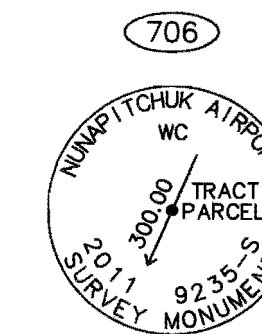
Set 3-1/4" Aluminum Cap on 3/4" x 9" Aluminum Drive Rod flush with grade, Orange Carsonite Marker set Westerly 0.5' from monument



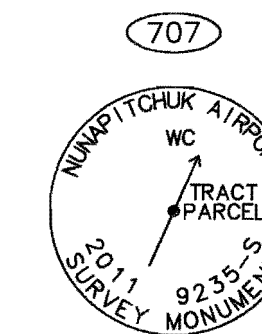
Set 3-1/4" Aluminum Cap on 3/4" x 9" Aluminum Drive Rod flush with grade, Orange Carsonite Marker set Northerly 0.5' from monument



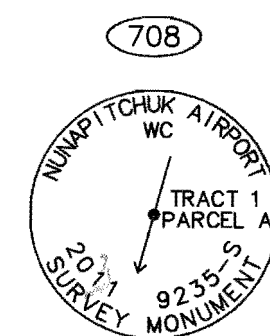
Set 3-1/4" Aluminum Cap on 3/4" x 9" Aluminum Drive Rod 0.1' below grade, Orange Carsonite Marker set Northerly 0.5' from monument



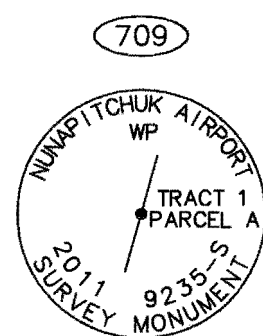
Set 3-1/4" Aluminum Cap on 3/4" x 9" Aluminum Drive Rod flush with grade, Orange Carsonite Marker set Easterly 0.5' from monument



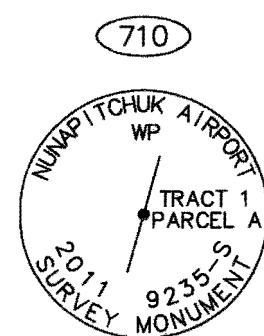
Set 3-1/4" Aluminum Cap on 3/4" x 9" Aluminum Drive Rod flush with grade, Orange Carsonite Marker set Easterly 0.5' from monument



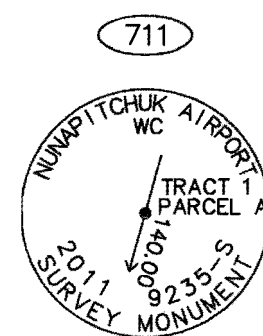
Set 3-1/4" Aluminum Cap on 3/4" x 9" Aluminum Drive Rod flush with grade, Orange Carsonite Marker set Northeastly 0.5' from monument



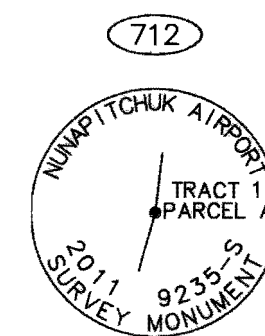
Set 3-1/4" Aluminum Cap on 3/4" x 9" Aluminum Drive Rod flush with grade, Orange Carsonite Marker set Easterly 1.0' from monument



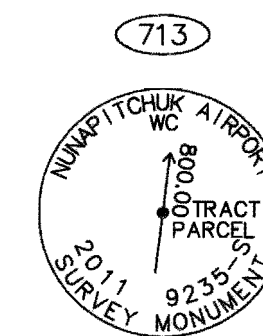
Set 3-1/4" Aluminum Cap on 3/4" x 9" Aluminum Drive Rod flush with grade, Orange Carsonite Marker set Easterly 0.5' from monument



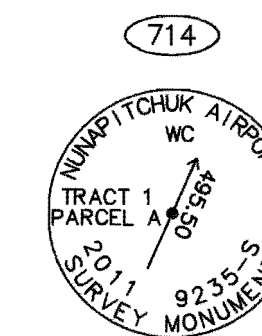
Set 3-1/4" Aluminum Cap on 3/4" x 9" Aluminum Drive Rod flush with grade, Orange Carsonite Marker set Easterly 0.5' from monument



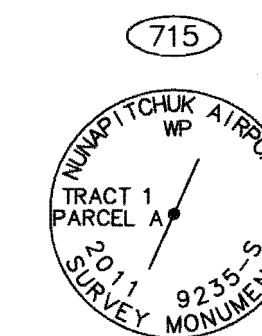
Set 3-1/4" Aluminum Cap on 3/4" x 9" Aluminum Drive Rod flush with grade, Orange Carsonite Marker set Easterly 0.5' from monument



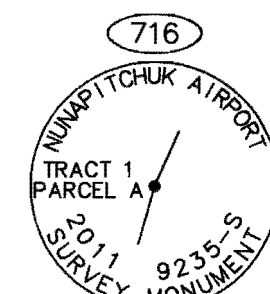
Set 3-1/4" Aluminum Cap on 3/4" x 9" Aluminum Drive Rod flush with grade, Orange Carsonite Marker set Easterly 0.5' from monument



Set 3-1/4" Aluminum Cap on 3/4" x 9" Aluminum Drive Rod 0.9' above grade, Orange Carsonite Marker set Westerly 0.5' from monument



Set 3-1/4" Aluminum Cap on 3/4" x 9" Aluminum Drive Rod flush with grade, Orange Carsonite Marker set Westerly 0.5' from monument



Set 3-1/4" Aluminum Cap on 3/4" x 9" Aluminum Drive Rod 0.2' above grade, Orange Carsonite Marker set Westerly 0.5' from monument

SURVEY CONTROL POINTS					
POINT	STATION	OFFSET	LOCAL NORTHING	LOCAL EASTING	ELEVATION
1	34+09.63	187.87 Rt	100327.2368	50259.7828	3.67'
2	41+51.92	221.38 Rt	101032.3844	50494.0833	4.38'
3	52+16.67	206.79 Rt	102060.8983	50769.8811	2.39'
103	37+45.70	225.69 Rt	100640.3223	50387.6502	-
104	43+66.61	224.59 Rt	101238.0876	50555.6121	-
105	49+87.66	223.47 Rt	101835.9963	50723.5916	-
106	30+23.81	98.02 Lt	100033.8119	49879.6598	-
107	30+23.58	223.01 Lt	100067.6217	49759.3269	-
110	29+03.34	0.00	99891.2099	49941.1855	-
111	57+96.51	0.00	102675.1228	50728.7407	-
551	N/A	N/A	79718.6746	44410.8214	-
608	N/A	N/A	84850.6497	53679.4055	-

N/A DENOTES NOT ADJACENT

MONUMENTATION					
POINT	STATION	OFFSET	LOCAL NORTHING	LOCAL EASTING	ELEVATION
603	45+05.80	296.64 Rt	101352.4130	50662.8311	-
604	-1+32.33	2063.56 Lt	97531.8990	47129.2037	-
605	-0+70.66	2434.71 Lt	97692.2722	46788.8551	-
606	1+79.28	2434.24 Lt	97932.6547	46857.3465	-
607	2+34.85	2425.62 Lt	97983.7737	46880.7724	-
701	28+18.15	277.35 Rt	99733.7416	50184.8691	-
702	27+24.48	277.51 Rt	99643.5616	50159.5309	-
703	22+68.51	346.74 Rt	99185.9712	50102.0220	-
704	17+24.57	329.29 Rt	98667.3140	49937.1667	-
705	17+24.03	29.29 Rt	98748.4638	49648.3507	-
706	20+20.08	326.73 Lt	99130.2466	49386.3577	-
707	23+20.80	282.17 Lt	99407.4772	49511.0939	-
708	26+07.14	572.28 Lt	99761.9809	49309.8887	-
709	34+07.14	573.70 Lt	100532.1570	49526.2883	-
710	40+07.14	574.77 Lt	101109.7891	49688.5880	-
711	59+63.58	228.25 Lt	102898.0195	50554.5877	-
712	60+23.58	228.36 Lt	102955.7827	50570.8177	-
713	62+32.38	260.06 Lt	103165.3244	50597.1524	-
714	65+34.59	347.23 Rt	103290.8129	51263.7740	-
715	63+68.89	322.68 Rt	103138.0572	51195.0436	-
716	60+24.47	271.64 Rt	102820.5330	51052.1778	-

2012-33
Plat #
BETHEL
Rec Dist
7-27 2012
Date
Time 1:03 P.M.

Bethel Recording District
State Business - No Fee

PREPARED BY:
WHPACIFIC, INC.

STATE OF ALASKA
DEPARTMENT OF TRANSPORTATION
&
PUBLIC FACILITIES
RIGHT-OF-WAY ACQUISITION PLAT
NUNAPITCHUK AIRPORT
PROJECT No. 54850
Within Sec. 5, T9N R74W, and
Sec. 32, T10N, R74W,
Seward Meridian, Alaska

49th
TALLIE B. MANNESTAD
REGISTERED PROFESSIONAL LAND SURVEYOR
6/28/2012

DRAWN: CAW SURVEY DATE: JUNE 2011 SCALE: N/A SHEET: 4 of 4
CHECKED: GEL/TDM DRAWN DATE: JUNE 2012 FILE NO. PA20110045