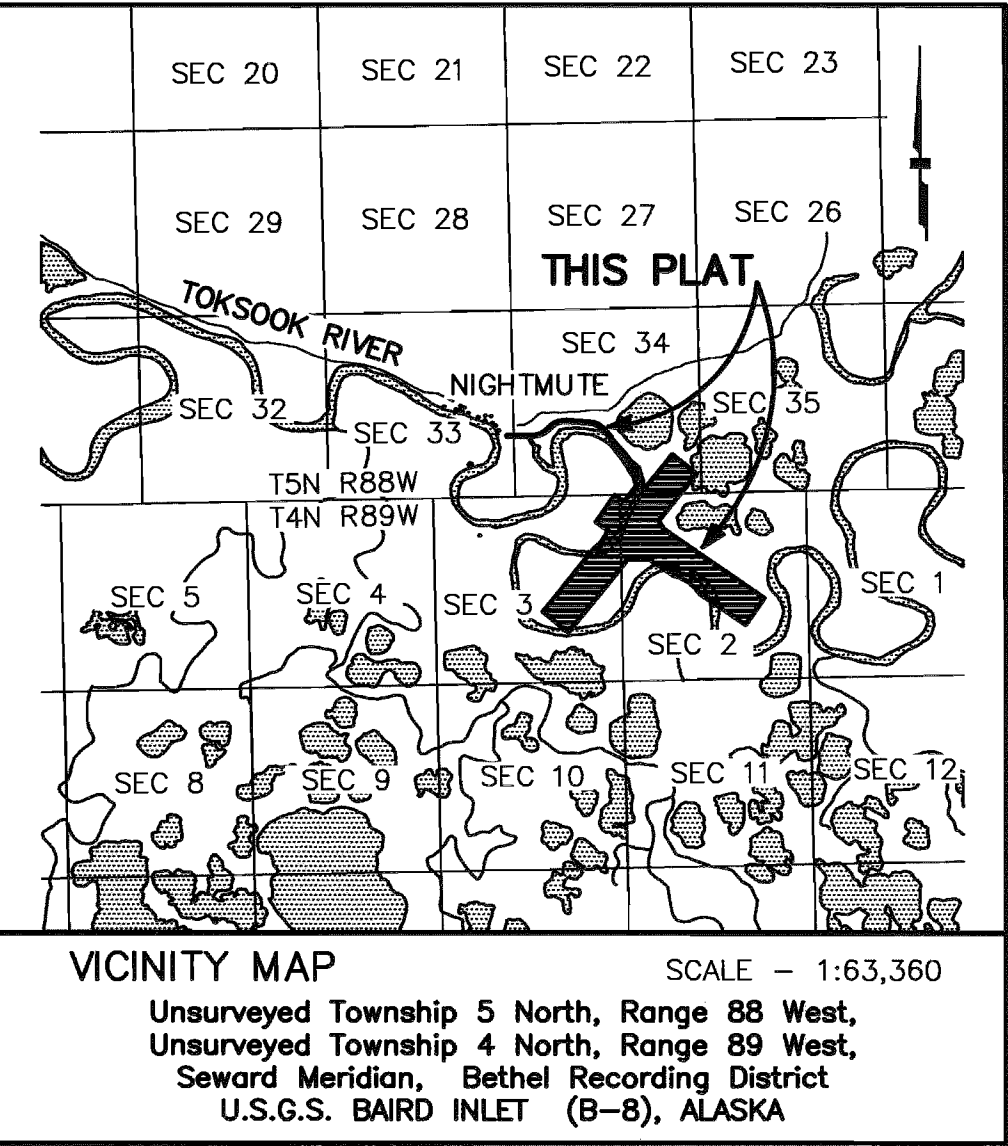


T5N R88W S33,S34
T4N R89W S2,S3
S.M.



VICINITY MAP SCALE - 1:63,360
Unsurveyed Township 5 North, Range 88 West,
Unsurveyed Township 4 North, Range 89 West,
Seward Meridian, Bethel Recording District
U.S.G.S. BAIRD INLET (B-8), ALASKA

PLAT APPROVAL
This plat is approved by the Commissioner of the Department of Natural Resources, or the Commissioner's Designee, in accordance with AS 40.15.
Michael E. Miller
Commissioner
Date *July 09, 2012*

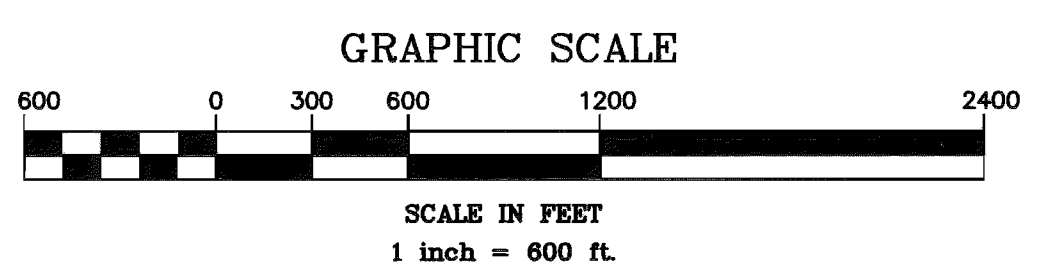
TAX CERTIFICATE
This property lies outside of any taxing authority, at the time of filing.

SURVEYOR CERTIFICATE
I hereby certify that I am properly Registered and Licensed to practice Land Surveying in the State of Alaska, and that this plat represents a survey made by me or under my direct supervision, that the monuments shown hereon actually exist as described, and that all dimensions and other details are correct.
Date *6/14/12*
Michael E. Miller
Michael E. Miller
McClintock Land Associates, Inc.
16942 N. Eagle River Loop Road
Eagle River, Alaska 99577
LS-7222



STATE OF ALASKA
DEPARTMENT OF TRANSPORTATION
&
PUBLIC FACILITIES

RIGHT OF WAY ACQUISITION PLAT
ALASKA PROJECT
NIGHTMUTE AIRPORT
AKSAS No. 51809

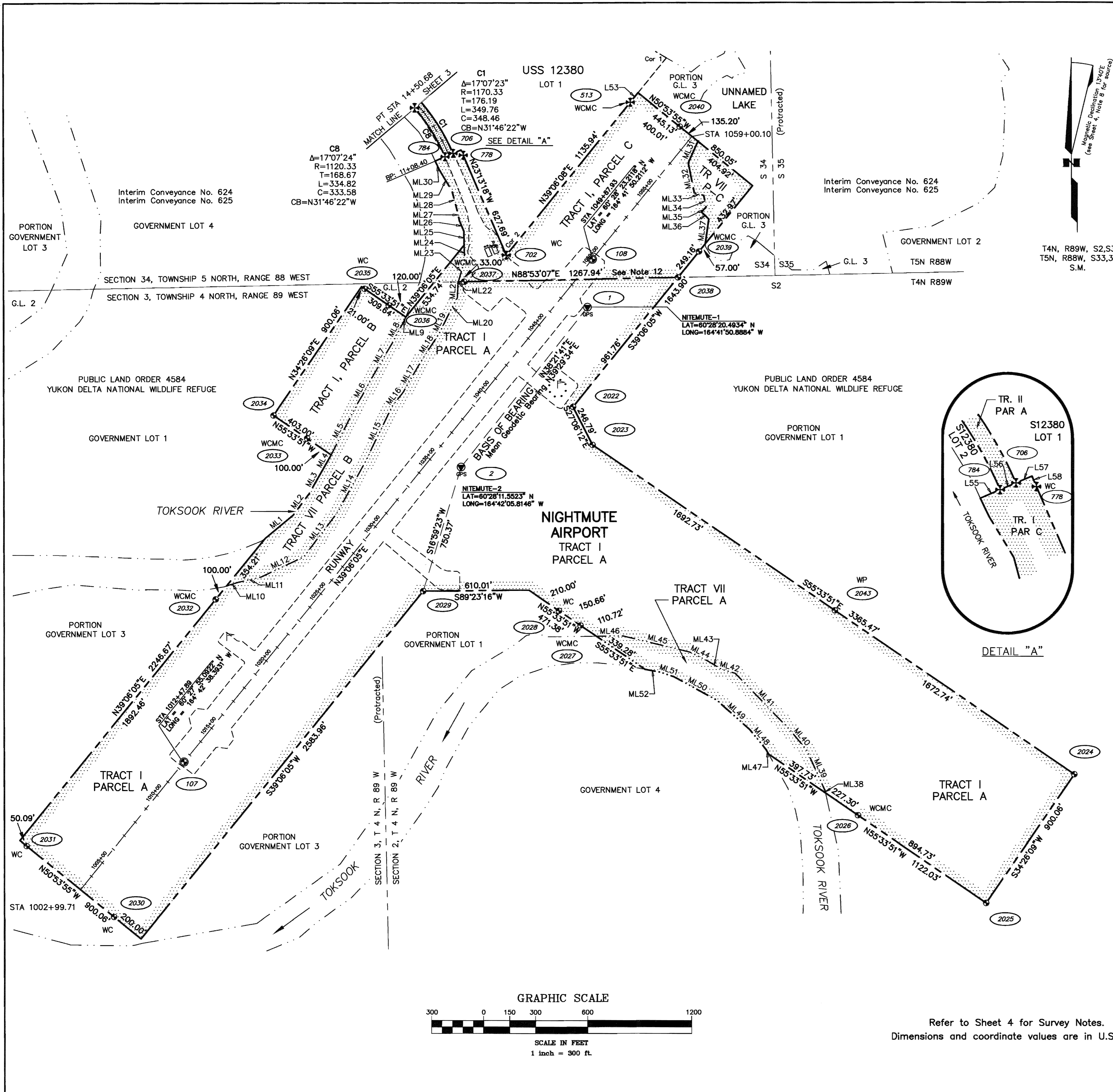


SHEET INDEX	
Sheet 1	Cover Sheet
Sheet 2	Tract I, Parcels A,B,C and Tract VII Parcels A,B,C
Sheet 3	Tract II, Parcels A,B and Tract V
Sheet 4	Property Status, Horizontal Control and Survey Notes
Sheet 5	Monument Details

BETHEL RECORDING DISTRICT PLAT 2012-30

Within Sections 2 and 3 T4N R89W
And Sections 33 and 34 T5N R88W
Seward Meridian, Alaska

BETHEL RECORDING DISTRICT
STATE BUSINESS - NO FEE
SHEET 1 OF 5
DNR FILE No. PA20120012
page 1 of 5



Meander Table		
Line #	Direction	Length
ML1	N49° 59' 01"E	211.32
ML2	N36° 47' 35"E	151.46
ML3	N29° 41' 37"E	158.40
ML4	N29° 34' 54"E	100.85
ML5	N27° 05' 22"E	285.34
ML6	N29° 16' 10"E	240.99
ML7	N30° 18' 29"E	217.41
ML8	N28° 05' 06"E	131.09
ML9	N24° 54' 13"E	30.34
ML10	N72° 36' 05"E	72.28
ML11	N77° 06' 59"E	132.44
ML12	N64° 46' 05"E	273.94
ML13	N36° 58' 14"E	326.59
ML14	N28° 53' 16"E	342.41
ML15	N25° 38' 41"E	341.65
ML16	N38° 18' 03"E	106.39
ML17	N30° 04' 48"E	203.90
ML18	N33° 04' 23"E	199.57
ML19	N25° 45' 38"E	104.71
ML20	N27° 43' 41"E	118.41

Meander Table		
Line #	Direction	Length
ML21	N02° 57' 28"E	88.55
ML22	N16° 54' 43"E	4.63
ML23	N16° 54' 42"E	125.19
ML24	N01° 18' 51"W	91.93
ML25	N01° 18' 51"W	80.33
ML26	N22° 44' 32"W	65.65
ML27	N12° 30' 04"W	69.57
ML28	N14° 47' 45"W	108.67
ML29	N30° 56' 33"W	138.97
ML30	N25° 27' 58"W	58.21
ML31	S24° 19' 37"W	136.01
ML32	S11° 20' 21"E	175.90
ML33	S74° 14' 59"E	56.21
ML34	S11° 35' 35"E	68.06
ML35	S41° 36' 11"W	39.87
ML36	S46° 31' 29"E	57.61
ML37	S08° 08' 01"W	145.05
ML38	N12° 27' 51"W	13.32
ML39	N24° 09' 18"W	256.68
ML40	N39° 34' 00"W	152.70

Meander Table		
Line #	Direction	Length
ML41	N44° 03' 29"W	453.23
ML42	N73° 54' 14"W	80.89
ML43	N59° 09' 20"W	97.67
ML44	N63° 41' 56"W	112.63
ML45	N76° 13' 46"W	392.42
ML46	S89° 39' 02"W	156.64
ML47	N29° 20' 55"W	31.52
ML48	N39° 06' 26"W	146.79
ML49	N48° 19' 55"W	253.63
ML50	N61° 15' 53"W	283.05
ML51	N71° 40' 42"W	84.24
ML52	N79° 29' 19"W	88.63

Line Table		
Line #	Direction	Length
L53	S39° 06' 05"W	70.76
L55	S67° 00' 26"W	61.90
L56	S66° 46' 42"W	50.00
L57	S66° 46' 42"W	50.01
L58	N23° 13' 18"W	33.00

- LEGEND**
- Primary Survey Control Monument, Recovered
 - BLM Monument, Recovered
 - Secondary Monument, Recovered
 - Set 3 1/4" Alum Cap on 2 1/2" x 30" Alum Pipe, Flared at Base, on Centerline
 - Set 3 1/4" Alum Cap on 2 1/2" x 30" Alum Pipe, Flared at Base, with Orange Carsonite Witness Post
 - PLAT 2008-25 Plat Recording Number (Typical)
 - (108) Monument Number, see Sheet 5
 - Wind Cone and Segmented Circle
 - Right-of-Way Line
 - Property Line
 - Meander Line (See Notes 11 & 17)
 - Centerline
 - Edge of Constructed Road
 - Existing Right-of-Way
 - Acquired Right-of-Way

BETHEL RECORDING DISTRICT
STATE BUSINESS - NO FEE

DATE	REVISIONS	BY

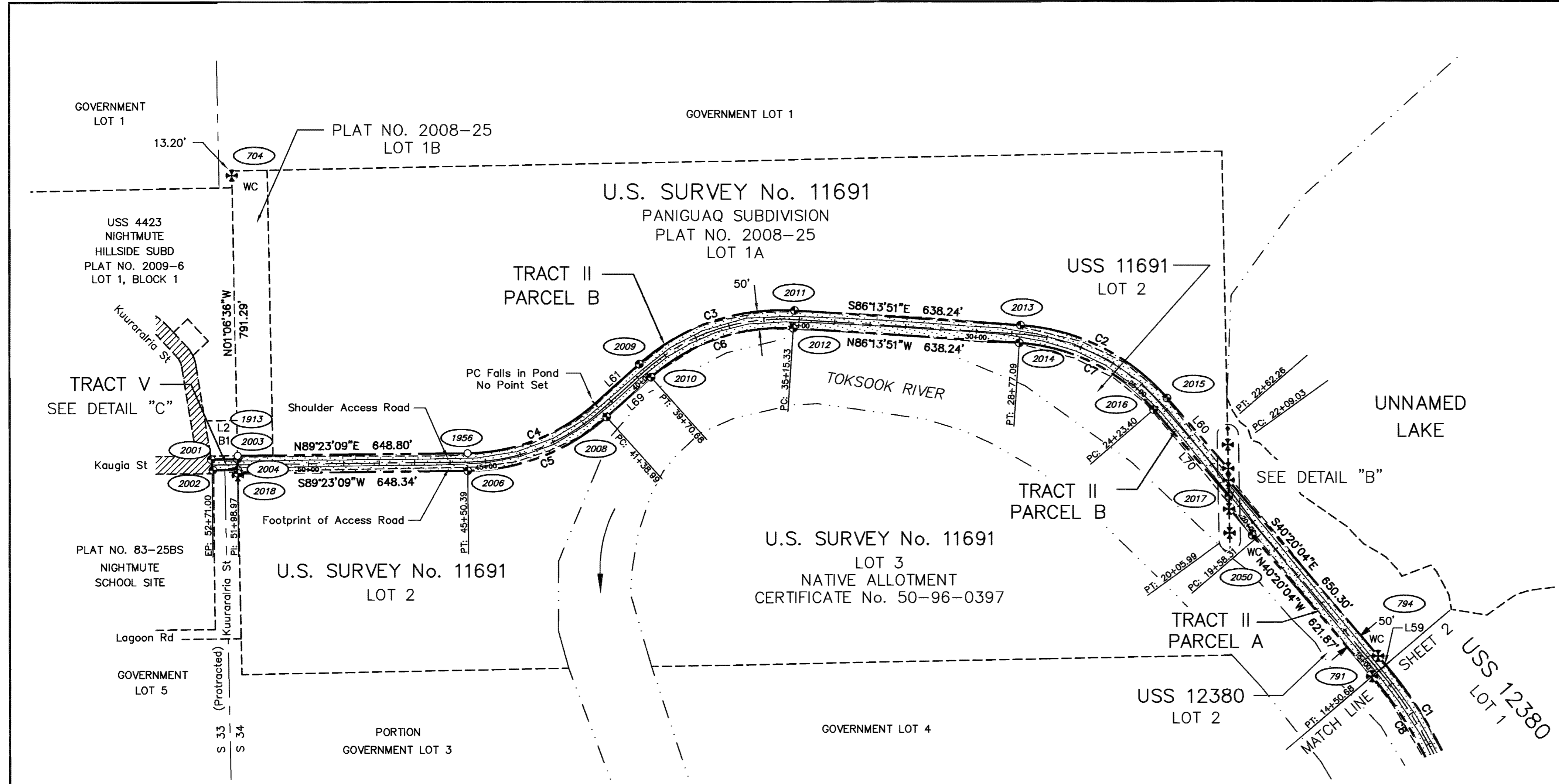
STATE OF ALASKA
DEPARTMENT OF TRANSPORTATION
&
PUBLIC FACILITIES
RIGHT OF WAY ACQUISITION PLAT
AKSAS Project No. 51809

NIGHTMUTE AIRPORT IMPROVEMENTS

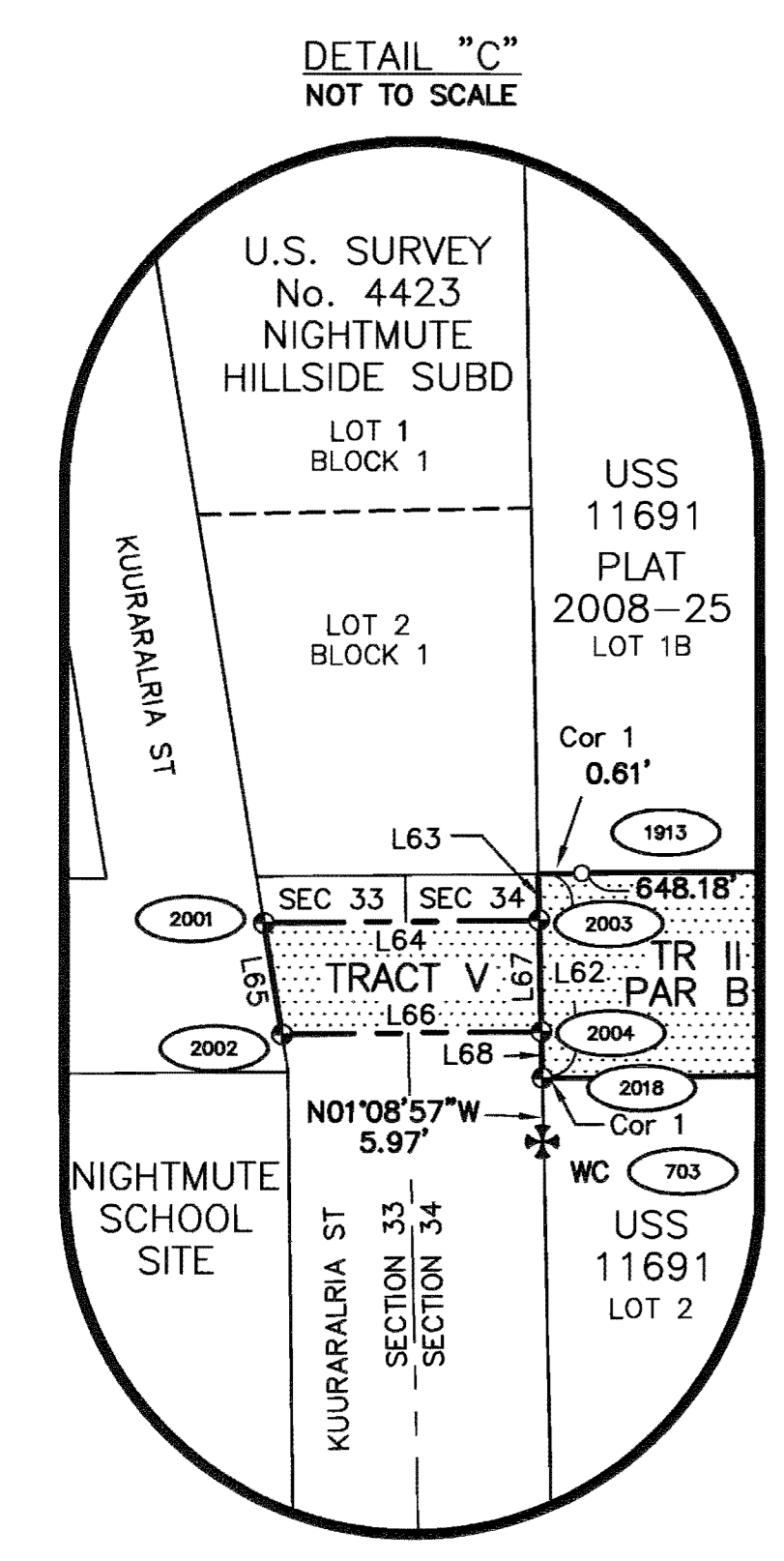
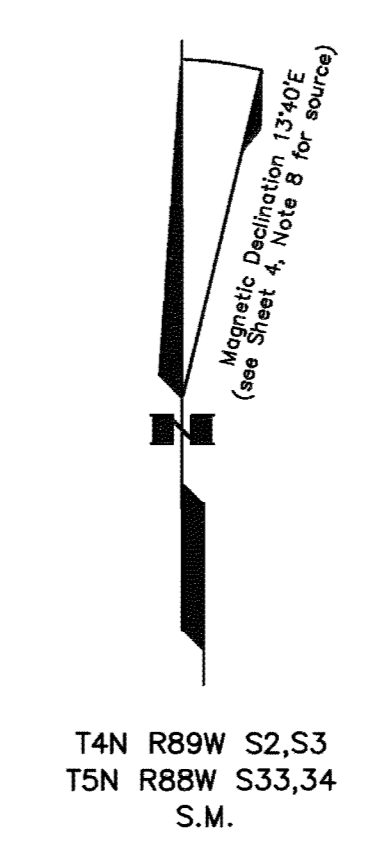
Located within Sections 2 and 3 T4N R89W
And Sections 33 and 34 T5N R88W
Seward Meridian, Alaska

DRAWN	SKS	DATE	5-17-12	SHEET	2 OF 5
CHECKED	MM	SCALE	1"=300'	DNR FILE No.	PA20120012

Refer to Sheet 4 for Survey Notes.
Dimensions and coordinate values are in U.S. feet.



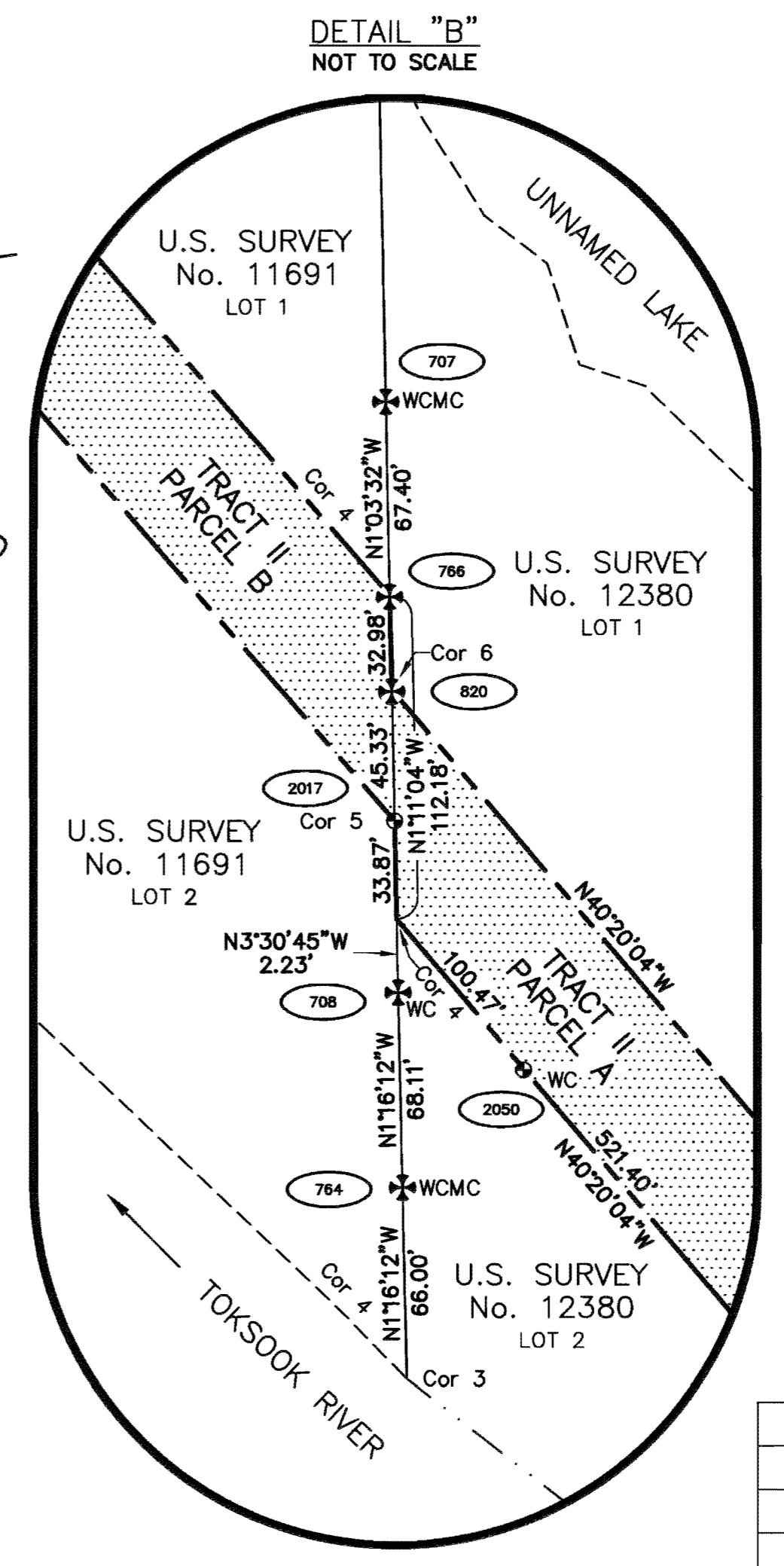
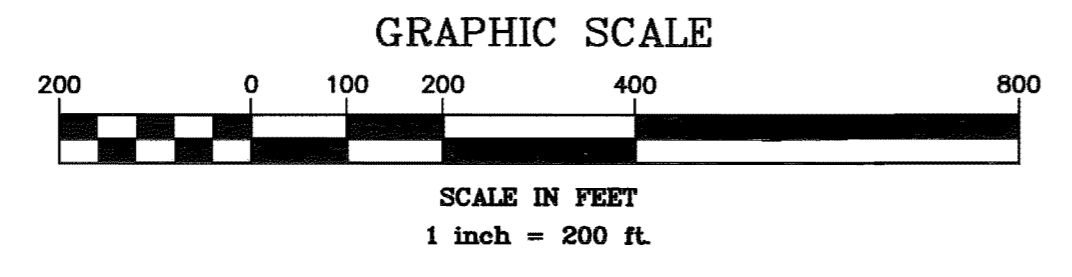
Line Table		
Line #	Direction	Length
L59	S40° 20' 04"E	32.99
L60	S40° 51' 51"E	263.35
L61	N48° 14' 09"E	168.31
L62	S01° 08' 57"E	50.01
L63	N01° 08' 57"W	10.00
L64	N89° 26' 57"E	74.16
L65	N09° 14' 03"W	30.35
L66	S89° 26' 57"W	69.90
L67	S01° 08' 57"E	30.00
L68	N01° 08' 55"W	10.00
L69	S48° 14' 09"W	168.31
L70	N40° 51' 51"W	323.62



Refer to Sheet 4 for Survey Notes.
Dimensions and coordinate values are in U.S. feet.

Curve Table						
Curve #	Delta	Radius	Tangent	Length	Chord Length	Chord Bearing
C1	17°07'23"	1170.33	176.19	349.76	348.46	N31°46'22"W
C2	45°22'00"	597.98	249.94	473.48	461.21	N63°32'51"W
C3	45°32'00"	597.98	250.96	475.22	462.81	S71°00'09"W
C4	41°09'00"	547.82	205.64	393.45	385.04	N68°48'39"E
C5	41°09'00"	597.82	224.41	429.36	420.19	N68°48'39"E
C6	45°32'00"	547.98	229.97	435.48	424.11	S71°00'09"W
C7	45°22'00"	547.98	229.04	433.89	422.64	N63°32'51"W
C8	17°07'24"	1120.33	168.67	334.82	333.58	N31°46'22"W

- LEGEND**
- Primary Survey Control Monument, Recovered
 - BLM Monument, Recovered
 - Secondary Monument, Recovered
 - Set 3 1/4 Alum Cap on 2 1/2" x 30" Alum Pipe, Flared at Base, on Centerline
 - Set 3 1/4 Alum Cap on 2 1/2" x 30" Alum Pipe, Flared at Base, with Orange Carsonite Witness Post
 - PLAT 2008-25 Plat Recording Number (Typical)
 - Monument Number, see Sheet 5
 - Wind Cone and Segmented Circle
 - Right-of-Way Line
 - Property Line
 - Meander Line (See Notes 11 & 17)
 - Centerline
 - Edge of Constructed Road
 - Existing Right-of-Way
 - Acquired Right-of-Way



BETHEL RECORDING DISTRICT
STATE BUSINESS - NO FEE

DATE	REVISIONS	BY

STATE OF ALASKA
DEPARTMENT OF TRANSPORTATION
&
PUBLIC FACILITIES
RIGHT OF WAY ACQUISITION PLAT
AKSAS Project No. 51809

NIGHTMUTE AIRPORT IMPROVEMENTS

Located within Sections 2 and 3 T4N R89W
And Sections 33 and 34 T5N R88W
Seward Meridian, Alaska

DRAWN	SKS	DATE	5-17-12	SHEET	3 OF 5
CHECKED	MM	SCALE	1"=200'	DNR FILE No.	PA20120012

HORIZONTAL CONTROL

Coordinate System:
Project coordinates are on a local surface grid coordinate system, expressed in U.S. Survey Feet, developed by McClintock Land Associates, Inc, as shown on the Amended Record of Survey, Survey Control Diagram for Nightmute Airport, recorded on February 1, 2012 as plat 2012-02.

Basis of Coordinates:
The Basis of Coordinates is Point No. 2, "Nitemute-2", a 2 1/2" brass cap set on a 9/16" stainless steel rod. The geodetic position, determined through static GPS observation and subsequent post-processing and OPUS solution, is 60°28'11.5523" North Latitude and 164°42'05.8146" West Longitude (North American Datum 1983-NAD83). The state plane coordinate is 2,365,942.05 feet Northing, 1,874,700.20 feet Easting (Alaska Zone Eight, NAD83). The local coordinate is 76,734.10 feet Northing, 270,011.15 feet Easting.

Basis of Bearings:
Project bearings are NAD83 Alaska State Plane, Zone 8 grid bearings.

Translation Parameters:
To convert from the Local Coordinate System (U.S. feet) to State Plane Coordinates (U.S. Feet), Alaska Zone 8 (NAD83), translate the local coordinates using +2,289,374.0712 feet Northing and +1,604,820.6794 feet Easting; then scale the resulting coordinates using a scale factor of 0.9999297934.

To convert from State Plane Coordinates (U.S. Feet), Alaska Zone 8 (NAD83), to the Local Coordinate System (U.S. feet), scale the state plane coordinates using a scale factor of 1.000070212; then translate the resulting coordinates using -2,289,374.0712 feet Northing and -1,604,820.6794 feet Easting.

SURVEY NOTES

- The minimum closure of all traverses meets or exceeds 1:10,000.
- Information hereon is based on an actual field survey conducted by McClintock Land Associates, Inc., during September 1998 and May and June of 2011.
- All monuments shown hereon were found or set during field surveys performed on: September 1998, November and December 2004, May and June 2011.
- Horizontal Control Points were established by using networked static GPS techniques. The network was adjusted using a least squares adjustment constrained to Point No. 2, Nitemute-2, as shown on the Amended Record of Survey, Survey Control Diagram for Nightmute Airport, recorded on February 1, 2012 as plat 2012-02.
- The Basis of Geodetic Control and NAD83 Position is Point No. 2, Nitemute-2, Latitude = 60°28'11.5523" N, Longitude = 164°42'05.8146" W, as shown on the Amended Record of Survey, Survey Control Diagram for Nightmute Airport, recorded on February 1, 2012 as plat 2012-02. The geodetic position was determined through static GPS observation and subsequent post-processing and OPUS solution.
- The bearings shown are local plane bearings as oriented to the State Plane Zone 8 grid Basis of Bearings. The rotation angle between the True Meridian and the local plane bearings on the Basis of Bearing line from Nitemute-2 to Nitemute-1 is -01°07'53".
- Corner positions were monumented using RTK GPS methods. The monument positions were then checked by processing static GPS observations and adjusting the resulting network using a simultaneous least squares adjustment.
- A magnetic declination was provided by the State of Alaska, Department of Transportation and Public Facilities, Statewide Design and Engineering Services Division, Central Region - Right of Way Section in a memorandum dated November 28, 2005.
- Right-of-Way has been acquired and construction has been completed.
- All dimensions and coordinates shown hereon are in U.S. Survey Feet unless otherwise noted. Distances shown are reduced to horizontal ground distances.
- The natural meanders of the mean high tide line of the Toksook River forms the property boundary as applicable.

SURVEY NOTES (continued)

12. The boundary that separates Tract I, Parcel A and Tract I, Parcel C is also the boundary line that separates Township 5 North, Range 88 West and Township 4 North, Range 89 West. This line was not surveyed at the time of the original field survey of the airport property plan. This boundary line was recently resurveyed by Charles E. Akin, Jr., in August through September 2005 as part of the survey of U.S. Survey No. 13490.

13. The Basis of Stationing is the Nightmute Airport Property Plan, dated 6/21/06.

14. All lands within Township 4 North, Range 89 West, Seward Meridian, Alaska, are part of Public Land Order 4584, Clarence National Wildlife Range, now known as the Yukon Delta National Wildlife Refuge.

15. The following notes were taken from the Nightmute Airport, Tract I, Property Plan, dated 1/21/1974, latest revision dated 5/02/84. The following notes apply to Tract I, Parcels A and C.

a) PLO 4584 created Clarence Rhodes National Wildlife Refuge Seward Meridian. 20 year airport lease excludes area within Clarence Rhodes National Wildlife Refuge (NWR), (expired 7/17/1998); 50 year ROW permit to exclude area not in NWR, (expires 3/03/2025).

b) BLM transferred jurisdiction of lease to US Fish and Wildlife 3/18/82.

c) US Fish and Wildlife transferred jurisdiction of lease to the Village Corp., NGTA, Inc. on 7/26/83.

d) US Fish and Wildlife transferred jurisdiction of 50 year ROW Permit to Toksook Bay Village Corporation (Nunakuiak Yupik Corporation) per Interim Conveyance No. 624 on 7/26/83.

16. Tract I (as shown on the Nightmute Airport, Tract I, Property Plan, dated 1/21/1974, latest revision dated 5/02/1984), now a portion of Tract I, Parcel A, delineated on sheet 1 of 3, was granted a ROW permit on 3/04/1975 - Permit M-3 for Airport ROW, Signed by US Dept of Interior, Fish and Wildlife Service. Tract I, free use permit to the State of Alaska, Division of Aviation, to use and occupy certain lands for the Clarence Rhodes National Wildlife Refuge for the purpose of establishing, operating and maintaining the Nightmute Airport for a period of 20 years. Book 22, Page 9, 8/25/1976. On 8/25/1976, Amendment #2, Permit M-3 for Airport ROW, US of A, Fish and Wildlife Service, issued a permit for 50 years, which expires on 3/03/2025. Signed by US Dept of Interior, Fish and Wildlife Service. Book 23, Page 51.

17. The lakes that form the boundaries of Lot 1, USS 12380, are based on actual field surveys performed by McClintock Land Associates in September, 1999. The remaining unlabeled lake boundaries, including that which defines Tract VII, Parcel C, were provided by the Alaska Department of Transportation and Public Facilities, the source is unknown.

18. The purpose of this survey was to monument the boundaries of parcels of land acquired by the State of Alaska, Department of Transportation & Public Facilities, as shown on the Nightmute Airport Property Plan dated 04/10/2006. In addition, the following approved US Surveys control the boundary of several tracts.

- The boundary of Tract I Parcel C is contiguous with the record boundary of Lots 1 & 2 as shown on the record plat of USS 12380, approved 12/9/1998.
- The boundary of Tract II Parcel A is contiguous with the record boundary of Lots 1 & 2 as shown on the record plat of USS 12380, approved 12/9/1998.
- The boundary of Tract II Parcel B is contiguous with the record boundary of Lots 1 & 2 as shown on the record plat of USS 11691, approved 10/16/1995.
- No record data is shown from USS 11691 or 12380.

BETHEL RECORDING DISTRICT
STATE BUSINESS - NO FEE

DATE	REVISIONS	BY

STATE OF ALASKA
DEPARTMENT OF TRANSPORTATION
&
PUBLIC FACILITIES
RIGHT OF WAY ACQUISITION PLAT
AKSAS Project No. 51809

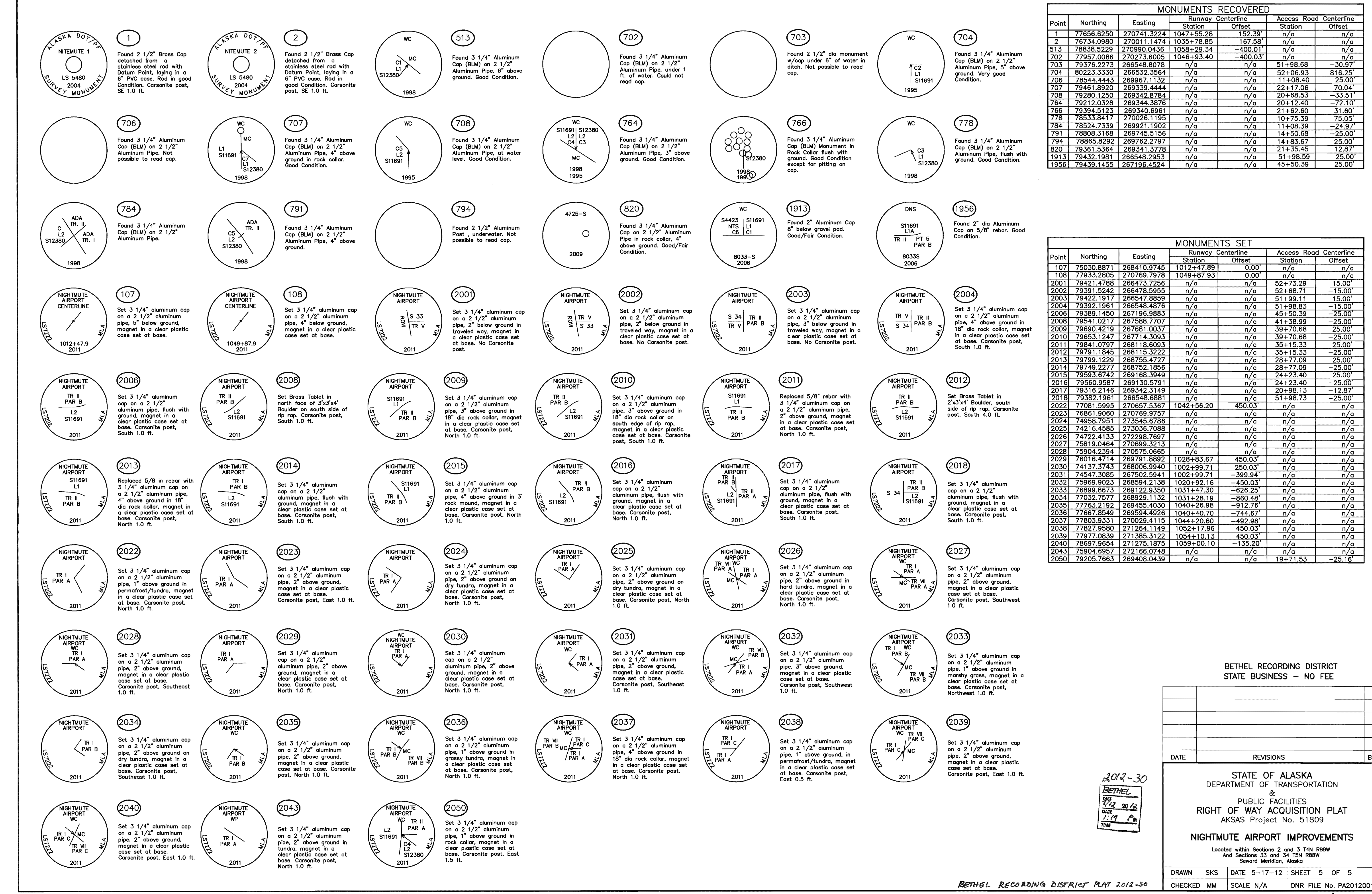
NIGHTMUTE AIRPORT IMPROVEMENTS

Located within Sections 2 and 3 T4N R89W
And Sections 33 and 34 T5N R88W
Seward Meridian, Alaska

DRAWN	SKS	DATE	5-17-12	SHEET	4	OF	5
CHECKED	MM	SCALE	N/A	DNR FILE No.	PA20120012		

PROPERTY STATUS								
PARCEL NO.	INTEREST TO BE ACQUIRED	GRANTOR	GRANTEE	LARGER PARCEL AREA	NET TAKE	REMAIN	RECORDED DOCUMENT NO.	ACQUIRED UNDER A.I.P. NO.
TR I, PCL A	Fee - Surface Estate - See Notes 15 and 16 (pertains to a portion of this parcel).	Nunakuiak Yupik Corp	State of Alaska, DOT&PF	Large	158.40 Ac.	Large	2007-000810-0	
	Fee - Subsurface Estate	United States Fish and Wildlife	State of Alaska, DOT&PF				See Note 16	
TR I, PCL B	Fee - Surface Estate	Nunakuiak Yupik Corp	State of Alaska, DOT&PF	Large	7.31 Ac.	Large	2007-000810-0	
	Fee - Subsurface Estate	United States Fish and Wildlife	State of Alaska, DOT&PF				See Note 16	
TR I, PCL C	Fee - Surface Estate - See Note 15.	Chinuruk, Inc	State of Alaska, DOT&PF	Large	21.15 Ac.	Large	2007-000598-0	
	Fee - Subsurface Estate	Calista Corp	State of Alaska, DOT&PF				2007-000597-0	
TR II, PCL A	Fee - Surface Estate	Chinuruk, Inc	State of Alaska, DOT&PF	Large	1.14 Ac.	Large	2007-000598-0	
	Fee - Subsurface Estate	Calista Corp	State of Alaska, DOT&PF				2007-000597-0	
TR II, PCL B	Fee - Surface Estate	Chinuruk, Inc	State of Alaska, DOT&PF	Large	3.52 Ac.	Large	2007-000598-0	
	Fee - Subsurface Estate	Calista Corp	State of Alaska, DOT&PF				2007-000597-0	
TR V	Fee - Surface Estate	Chinuruk, Inc	State of Alaska, DOT&PF	Large	0.05 Ac.	Large	2007-000598-0	
	Fee - Subsurface Estate	Calista Corp	State of Alaska, DOT&PF				2007-000597-0	
TR VII, PCL A	Interagency Land Management Agreement (ILMA)	State of Alaska, DNR	State of Alaska, DOT&PF	Large	5.24 Ac.	Large	2008-000159-0	
TR VII, PCL B	Interagency Land Management Agreement (ILMA)	State of Alaska, DNR	State of Alaska, DOT&PF	Large	9.51 Ac.	Large	2008-000159-0	
TR VII, PCL C	Interagency Land Management Agreement (ILMA)	State of Alaska, DNR	State of Alaska, DOT&PF	Large	2.23 Ac.	Large	2008-000159-0	

NOTE: All lands within Township 4 North, Range 89 West, Seward Meridian, Alaska, are part of Public Land Order 4584, Clarence Rhode National Wildlife Range, now known as the Yukon Delta National Wildlife Refuge.



MONUMENTS RECOVERED						
Point	Northing	Easting	Runway Centerline		Access Road Centerline	
			Station	Offset	Station	Offset
1	77656.6250	270741.3224	1047+55.28	152.39'	n/a	n/a
2	76734.0980	270011.1474	1035+78.85	167.58'	n/a	n/a
513	78838.5229	270990.0436	1058+29.34	-400.01'	n/a	n/a
702	77957.0086	270273.6005	1046+93.40	-400.03'	n/a	n/a
703	79376.2273	266548.8078	n/a	n/a	51+98.68	-30.97'
704	80223.3330	266532.3564	n/a	n/a	52+06.93	816.25'
706	78544.4443	269967.1132	n/a	n/a	11+08.40	25.00'
707	79461.8920	269339.4444	n/a	n/a	22+17.06	70.04'
708	79280.1250	269342.8784	n/a	n/a	20+68.53	-33.51'
764	79212.0328	269344.3876	n/a	n/a	20+12.40	-72.10'
766	79394.5123	269340.6961	n/a	n/a	21+62.60	31.60'
778	78533.8417	270026.1195	n/a	n/a	10+75.39	75.05'
784	78524.7339	269921.1902	n/a	n/a	11+08.39	-24.97'
791	78808.3168	269745.5156	n/a	n/a	14+50.68	-25.00'
794	78865.8292	269762.2797	n/a	n/a	14+83.67	25.00'
820	79361.5364	269341.3778	n/a	n/a	21+35.45	12.87'
1913	79432.1981	266548.2953	n/a	n/a	51+98.59	25.00'
1956	79439.1455	267196.4524	n/a	n/a	45+50.39	25.00'

MONUMENTS SET						
Point	Northing	Easting	Runway Centerline		Access Road Centerline	
			Station	Offset	Station	Offset
107	75030.8871	268810.9745	1012+47.89	0.00'	n/a	n/a
108	77933.2805	270769.7978	1049+87.93	0.00'	n/a	n/a
2001	79421.4788	266473.7256	n/a	n/a	52+73.29	15.00'
2002	79391.5242	266478.5955	n/a	n/a	52+68.71	-15.00'
2003	79422.1917	266547.8859	n/a	n/a	51+99.11	15.00'
2004	79392.1961	266548.4876	n/a	n/a	51+98.83	-15.00'
2006	79389.1450	267196.9883	n/a	n/a	45+50.39	-25.00'
2008	79541.0217	267588.7707	n/a	n/a	41+38.99	-25.00'
2009	79690.4219	267681.0037	n/a	n/a	39+70.68	25.00'
2010	79653.1247	267714.3093	n/a	n/a	39+70.68	-25.00'
2011	79841.0797	268118.6093	n/a	n/a	35+15.33	25.00'
2012	79791.1845	268115.3222	n/a	n/a	35+15.33	-25.00'
2013	79799.1229	268755.4727	n/a	n/a	28+77.09	25.00'
2014	79749.2277	268752.1856	n/a	n/a	28+77.09	-25.00'
2015	79593.6742	269168.3949	n/a	n/a	24+23.40	25.00'
2016	79560.9587	269130.5791	n/a	n/a	24+23.40	-25.00'
2017	79316.2146	269342.3149	n/a	n/a	20+98.13	-12.87'
2018	79382.1961	266548.6881	n/a	n/a	51+98.73	-25.00'
2022	77081.5995	270657.5367	1042+56.20	450.03'	n/a	n/a
2023	76861.9060	270769.9757	n/a	n/a	n/a	n/a
2024	74958.7951	273545.6786	n/a	n/a	n/a	n/a
2025	74216.4585	273036.7088	n/a	n/a	n/a	n/a
2026	74722.4133	272298.7697	n/a	n/a	n/a	n/a
2027	75819.0464	270699.3213	n/a	n/a	n/a	n/a
2028	75904.2394	270575.0665	n/a	n/a	n/a	n/a
2029	76016.4714	269791.8892	1028+83.67	450.03'	n/a	n/a
2030	74137.3743	268006.9940	1002+99.71	250.03'	n/a	n/a
2031	74547.3085	267502.5941	1002+99.71	-399.94'	n/a	n/a
2032	75969.9023	268594.2138	1020+92.16	-450.03'	n/a	n/a
2033	76899.8673	269122.9350	1031+47.30	-626.25'	n/a	n/a
2034	77032.7577	268929.1132	1031+28.19	-860.48'	n/a	n/a
2035	77763.2192	269455.4030	1040+26.98	-912.76'	n/a	n/a
2036	77667.8549	269594.4926	1040+40.70	-744.67'	n/a	n/a
2037	77803.9331	270029.4115	1044+20.60	-492.98'	n/a	n/a
2038	77827.9580	271264.1149	1052+17.96	450.03'	n/a	n/a
2039	77977.0839	271385.3122	1054+10.13	450.03'	n/a	n/a
2040	78697.9654	271275.1875	1059+00.10	-135.20'	n/a	n/a
2043	75904.6957	272166.0748	n/a	n/a	n/a	n/a
2050	79205.7663	269408.0439	n/a	n/a	19+71.53	-25.16'

BETHEL RECORDING DISTRICT
STATE BUSINESS - NO FEE

DATE	REVISIONS	BY

STATE OF ALASKA
DEPARTMENT OF TRANSPORTATION
&
PUBLIC FACILITIES
RIGHT OF WAY ACQUISITION PLAT
AKSAS Project No. 51809

NIGHTMUTE AIRPORT IMPROVEMENTS

Located within Sections 2 and 3 T4N R89W
And Sections 33 and 34 T5N R88W
Seward Meridian, Alaska

DRAWN	SKS	DATE 5-17-12	SHEET 5 OF 5
CHECKED	MM	SCALE N/A	DNR FILE No. PA20120012

2012-30
BETHEL
DATE 5/22/2012
TIME 1:19 PM