

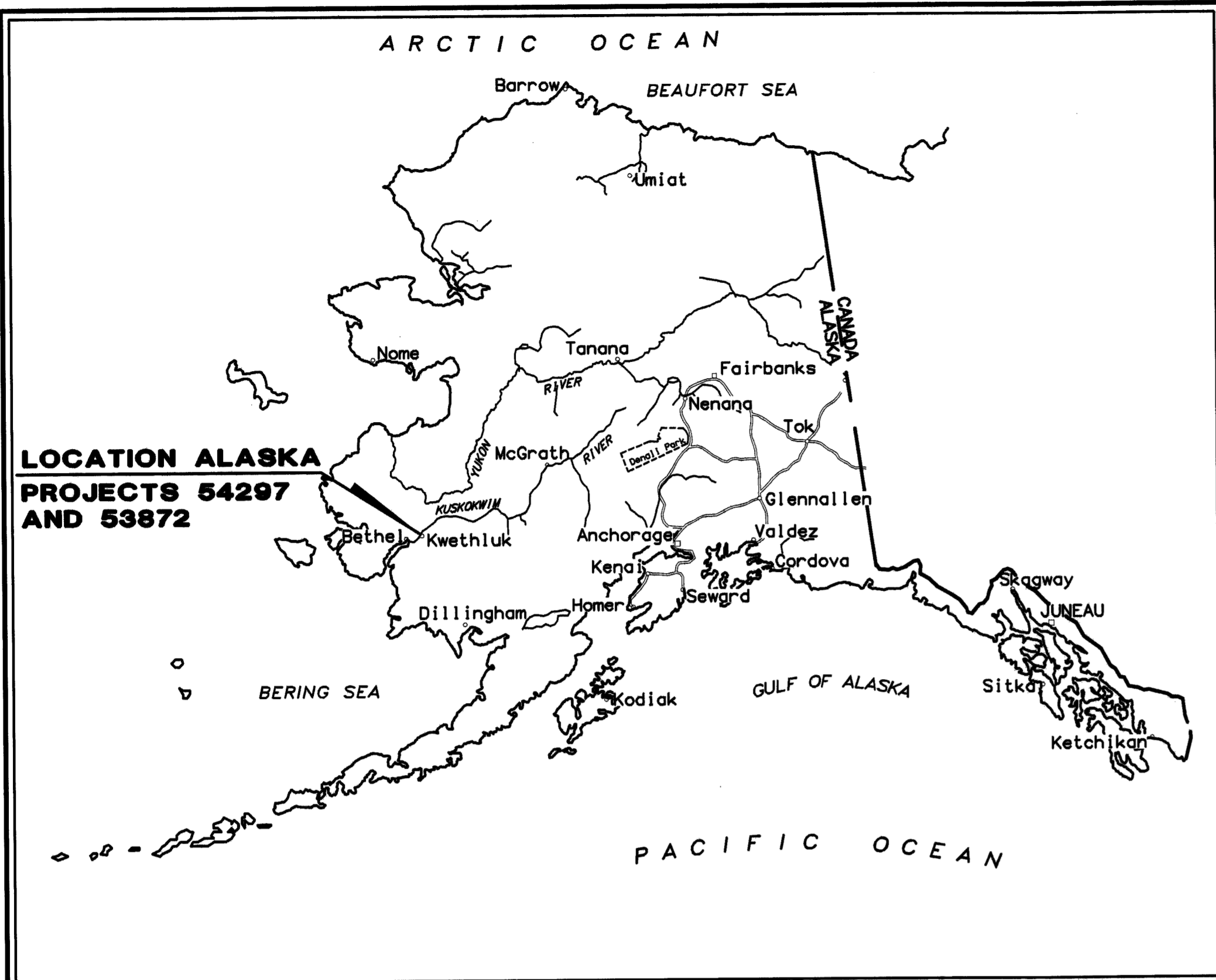
PROJECT DESIGNATION	SHEET NO.	TOTAL SHEETS
STP-0001(210)	R1	6

STATE OF ALASKA DEPARTMENT OF TRANSPORTATION & PUBLIC FACILITIES

RIGHT OF WAY ACQUISITION PLAT

ALASKA PROJECT KWETHLUK AIRPORT ACCESS ROAD STP-0001(210) / 54297 AND KWETHLUK AIRPORT 3-02-0435-01 / 53872

**LOCATION ALASKA
PROJECTS 54297
AND 53872**



PLAT APPROVAL
THIS PLAT IS APPROVED BY THE COMMISSIONER OF NATURAL RESOURCES, OR THE COMMISSIONER'S DESIGNEE, IN ACCORDANCE WITH AS 40.15.

Gerold Jennings
COMMISSIONER
DATE: Aug 19, 2014

TAX CERTIFICATE
THIS RIGHT-OF-WAY ACQUISITION PLAT IS NOT SUBJECT TO TAXATION, AT THE TIME OF FILING.

DEPARTMENT RIGHT-OF-WAY SURVEYOR'S CERTIFICATE
I HEREBY CERTIFY THAT I AM A PROFESSIONAL LAND SURVEYOR REGISTERED IN THE STATE OF ALASKA AND THAT THIS PLAT WAS MADE BY ME OR UNDER MY SUPERVISION. THIS PLAT WAS BASED UPON THE MONUMENTS SET PER RECORD OF SURVEY PLAT #2008-1.

DATE: 11 July 2014
REGISTRATION NUMBER: 85-6109

P. Louise Hooyer
P. LOUISE HOYER
NO. L.S.-6109
REGISTERED PROFESSIONAL LAND SURVEYOR

**DEPARTMENT OF
TRANSPORTATION & PUBLIC FACILITIES**

APPROVED July 11, 2014
Date

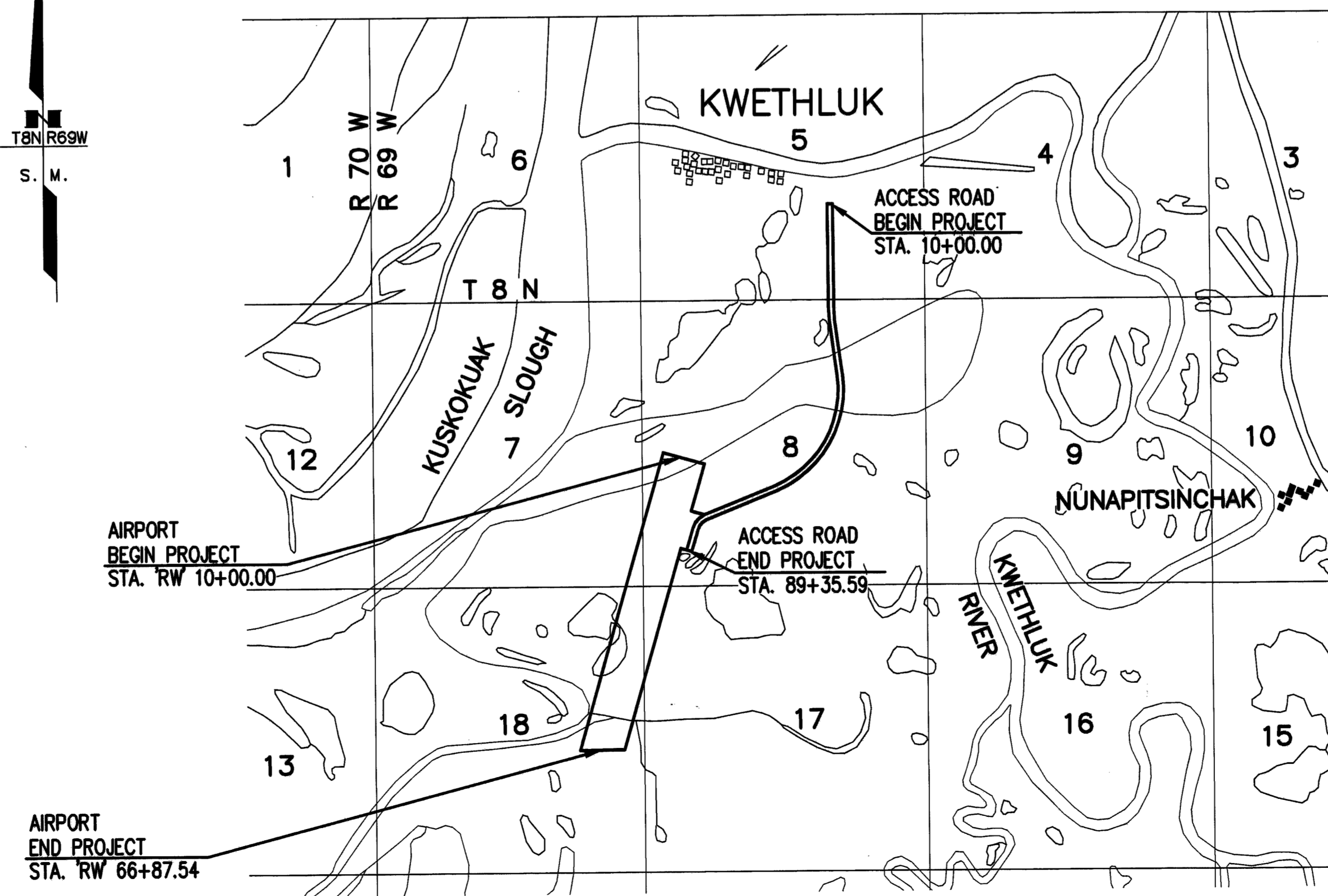
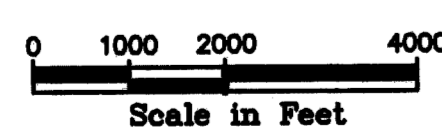
REGIONAL CHIEF R/W AGENT

LOCATED WITHIN PORTION OF SECTIONS 5, 7, 8, 17 & 18, T8N, R69W, SEWARD MERIDIAN

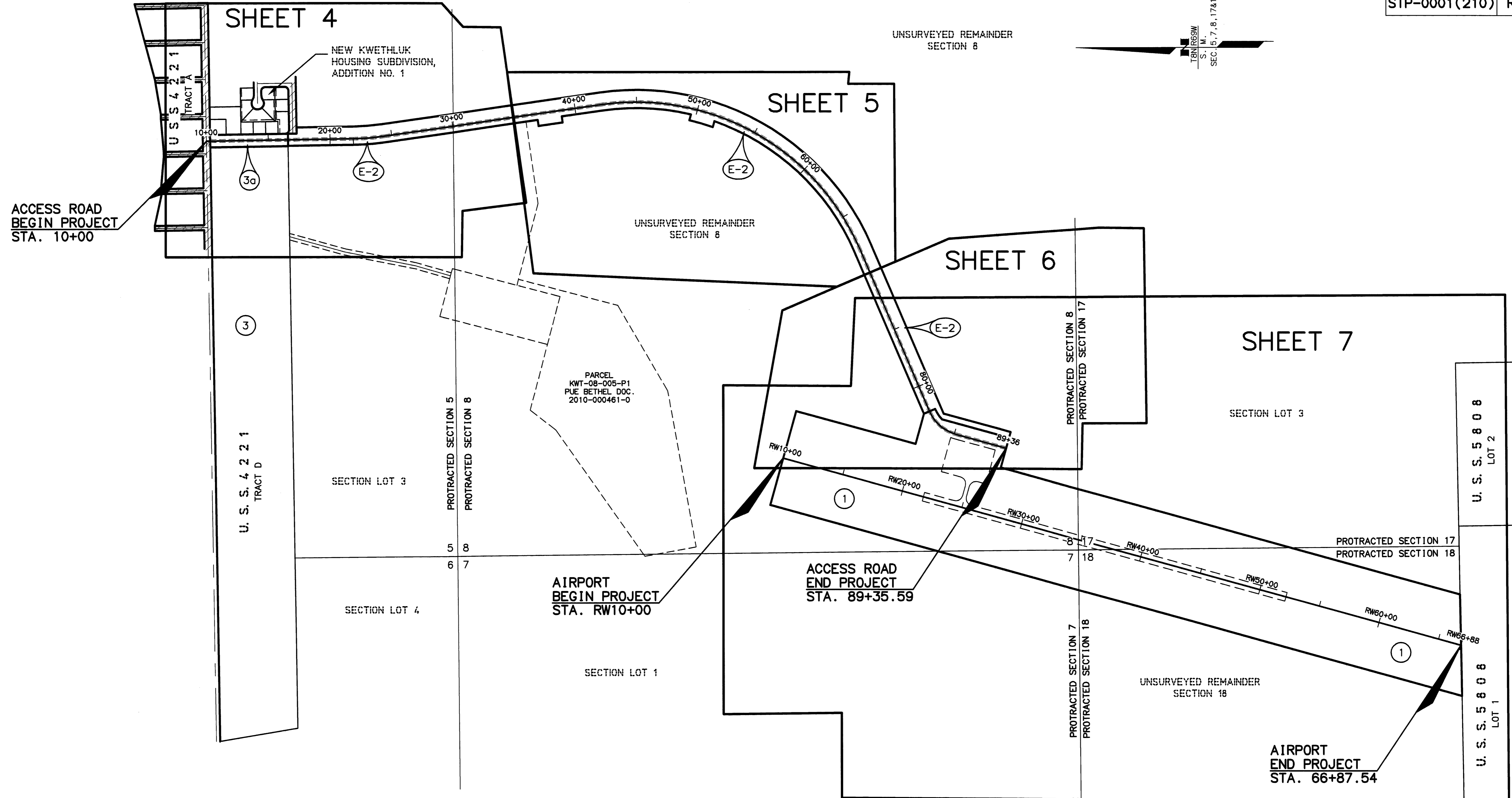
**BETHEL RECORDING DISTRICT
STATE BUSINESS-NO FEE**

PA20140018

- LEGEND**
- EXISTING RIGHT-OF-WAY
 - RIGHT-OF-WAY TO BE ACQUIRED
 - PARCEL NUMBER
 - EASEMENT NUMBER
 - RIGHT-OF-WAY LINE
 - EXISTING PROPERTY LINE
 - PROJECT CENTERLINE
 - EXISTING CENTERLINE
 - EXISTING EASEMENT
 - SECTION LINE
 - EDGE OF GRAVEL
 - EDGE OF ASPHALT
 - LIMIT OF FILL SLOPE
 - BLM MONUMENT - FND 2008
 - PRIMARY MONUMENT - SET 2008
 - SECONDARY MONUMENT - SET 2008
 - PRIMARY CENTERLINE MONUMENT - SET 2008
 - GPS SURVEY CONTROL - FND 2008
 - (R1) RECORD PER BLM USS 4221 (MARCH 10, 1970)
 - (R2) RECORD PER BLM USS 5808 (JULY 8, 1980)



PROJECT DESIGNATION	SHEET NO.	TOTAL SHEETS
STP-001(210)	R2	R6



NOTES:

1. THE PURPOSE OF THIS PLAT IS TO IDENTIFY PARCELS ACQUIRED FOR STATE OF ALASKA DOT&PF ALASKA PROJECTS: FHWA KWETHLUK AIRPORT ACCESS ROAD STP-001(210) AND FAA KWETHLUK AIRPORT, WHICH INCLUDED RIGHT-OF-WAY (ROW) ACQUISITION. ACQUISITIONS WERE COMPLETED IN 2001, CORRECTIVE DEEDS WERE RECORDED IN 2013. CONSTRUCTION OF THE ACCESS ROAD AND AIRPORT WERE COMPLETED IN 2005. THE BOUNDARY OF THE ROAD AND AIRPORT WERE SURVEYED AND MONUMENTED IN 2008 BY DONALD E MULLIKIN, 4469-S. A RECORD OF SURVEY WAS RECORDED AS ROS 2008-1, BETHEL RECORDING DISTRICT. THIS ROW ACQUISITION PLAT IS A COMBINATION OF THE AFOREMENTIONED ROS AND ADDING DATA REQUIRED BY AS 40.15.380, ROW ACQUISITION PLATS. NO FURTHER SURVEYS OR MONUMENTATION HAVE BEEN DONE SINCE THE 2008 SURVEY.
2. COORDINATE VALUES AND DESCRIPTION OF MONUMENTS ARE DEPICTED ON SURVEY CONTROL DIAGRAM, AMENDED RECORD OF SURVEY, BETHEL PLAT 2008-1.
3. RIGHT-OF-WAY CONSTRUCTION COMPLETED 2005.
4. RIGHT-OF-WAY ACQUISITION COMPLETED 2001, REVISED DEEDS 2013.

6/17/14	UPDATES PER DNR REVIEW	
DATE	REVISIONS	BY

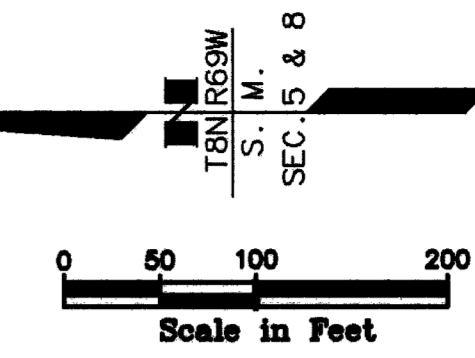
STATE OF ALASKA
 DEPARTMENT OF TRANSPORTATION
 &
 PUBLIC FACILITIES
 RIGHT OF WAY ACQUISITION PLAT
 ALASKA PROJECT
 ALASKA PROJECTS 54297
 AND 53872

DRAWN	GMS/DHF	DATE	04/02/2013	SCALE	1"=400'
CHECKED	PLH	DATE	04/02/2013	SHEET	2 OF 6

W:\Projects\Highways\BETHEL\54297-Kwethluk Airport Access Road\AutoCad Drawings\Plans & Parcels\54297-Tract. Map R3 7/11/2014 8:32:51 AM

BETHEL RECORDING DISTRICT

PA20140018



UNSURVEYED REMAINDER
SECTION LOT 3

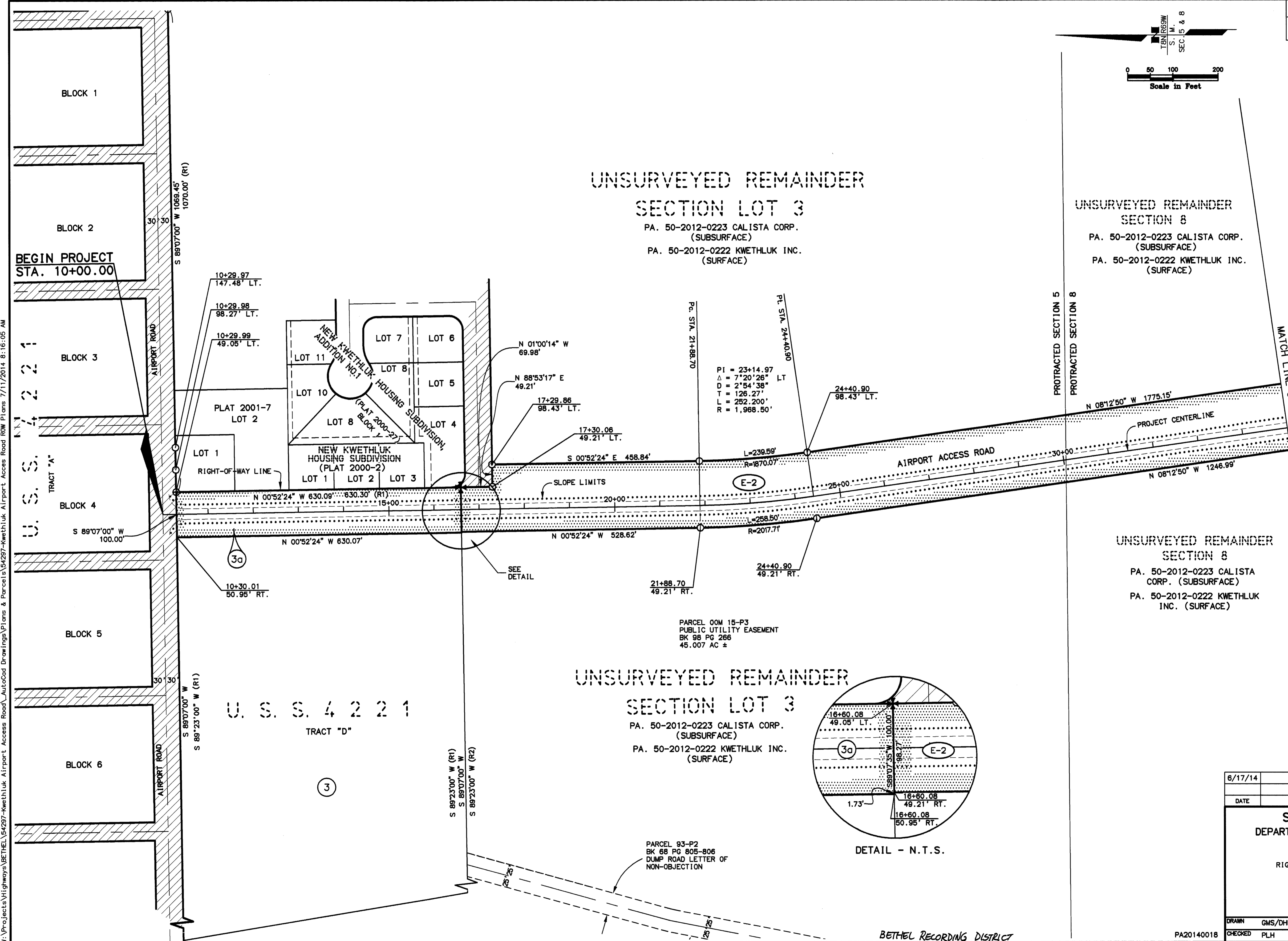
PA. 50-2012-0223 CALISTA CORP.
(SUBSURFACE)
PA. 50-2012-0222 KWETHLUK INC.
(SURFACE)

UNSURVEYED REMAINDER
SECTION 8

PA. 50-2012-0223 CALISTA CORP.
(SUBSURFACE)
PA. 50-2012-0222 KWETHLUK INC.
(SURFACE)

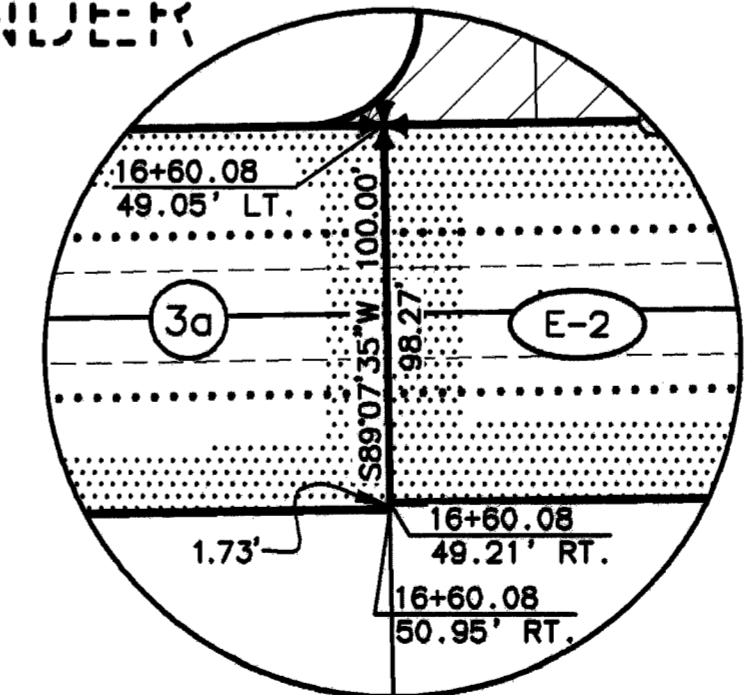
PROTRACTED SECTION 5
PROTRACTED SECTION 8

MATCH LINE STA 35+00 SHEET 4



UNSURVEYED REMAINDER
SECTION LOT 3

PA. 50-2012-0223 CALISTA CORP.
(SUBSURFACE)
PA. 50-2012-0222 KWETHLUK INC.
(SURFACE)



DETAIL - N.T.S.

PARCEL 93-P2
BK 68 PG 805-806
DUMP ROAD LETTER OF
NON-OBJECTION

PARCEL 00M 15-P3
PUBLIC UTILITY EASEMENT
BK 98 PG 266
45.007 AC ±

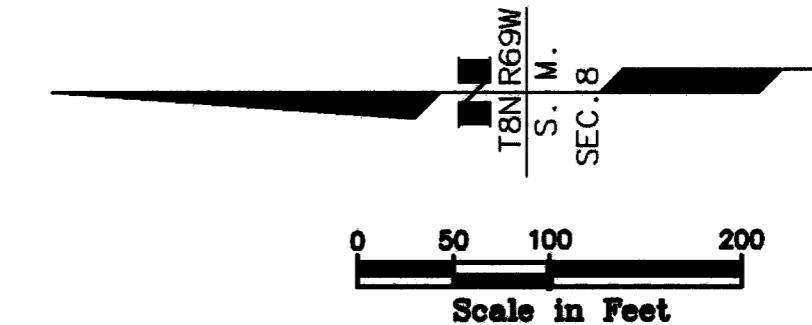
BETHEL RECORDING DISTRICT

6/17/14	UPDATES PER DNR REVIEW	
DATE	REVISIONS	BY

STATE OF ALASKA
DEPARTMENT OF TRANSPORTATION
&
PUBLIC FACILITIES
RIGHT OF WAY ACQUISITION PLAT
ALASKA PROJECT
54297
KWETHLUK AIRPORT
ACCESS ROAD

DRAWN	GMS/DHF	DATE	04/02/2013	SCALE	1"=100'
CHECKED	PLH	DATE	04/02/2013	SHEET	3 OF 6

W:\Projects\Highways\BETHEL\54297-Kwethluk Airport Access Road\AutoCad Drawings\Plans & Parcels\54297-Kwethluk Airport Access Road ROW Plans 7/11/2014 8:16:05 AM



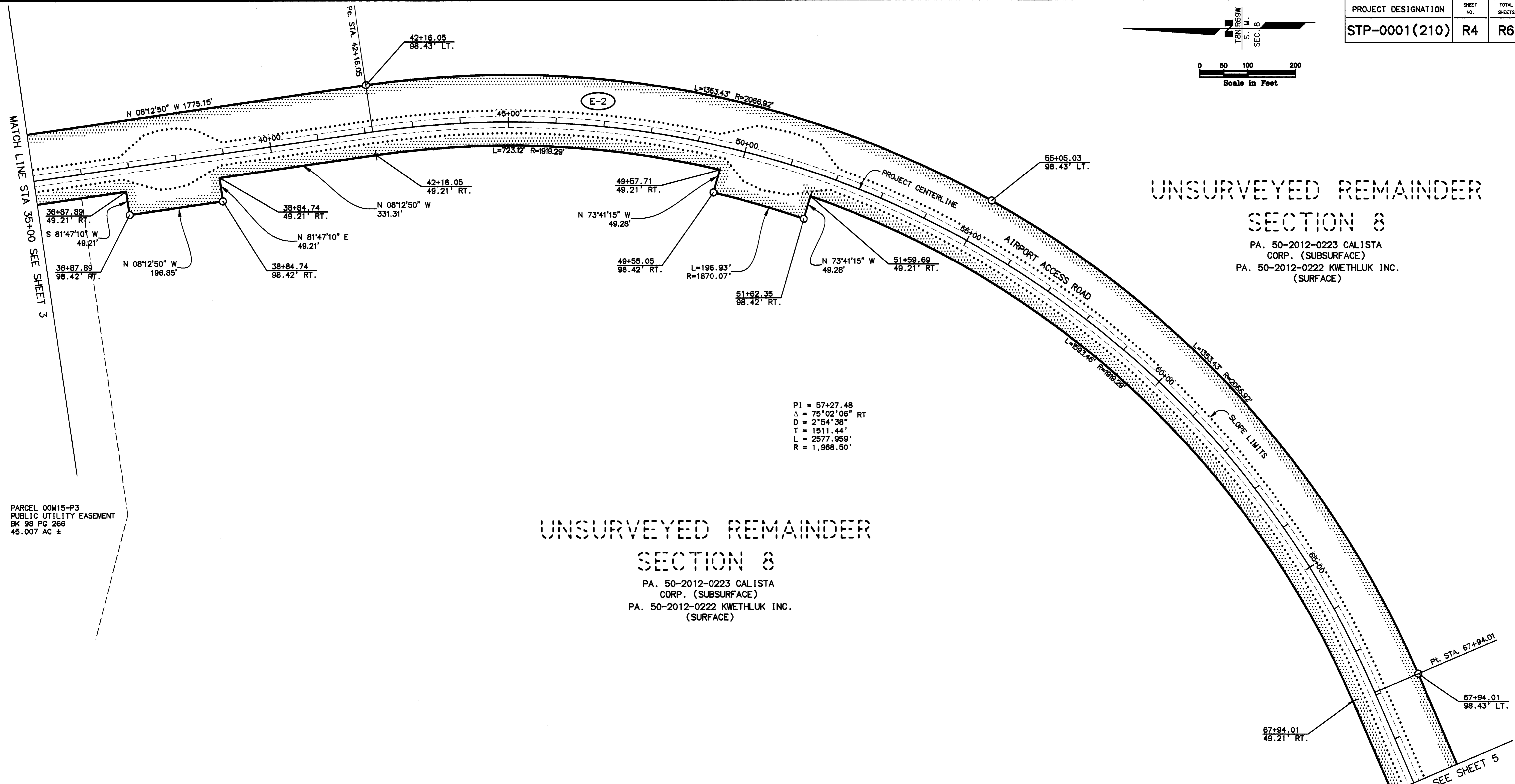
UNSURVEYED REMAINDER
SECTION 8

PA. 50-2012-0223 CALISTA CORP. (SUBSURFACE)
PA. 50-2012-0222 KWETHLUK INC. (SURFACE)

UNSURVEYED REMAINDER
SECTION 8

PA. 50-2012-0223 CALISTA CORP. (SUBSURFACE)
PA. 50-2012-0222 KWETHLUK INC. (SURFACE)

PI = 57+27.48
Δ = 75°02'06" RT
D = 2°54'38"
T = 1511.44'
L = 2577.959'
R = 1,968.50'



PARCEL 00M15-P3
PUBLIC UTILITY EASEMENT
BK 98 PG 266
45.007 AC ±

PROPERTY STATUS

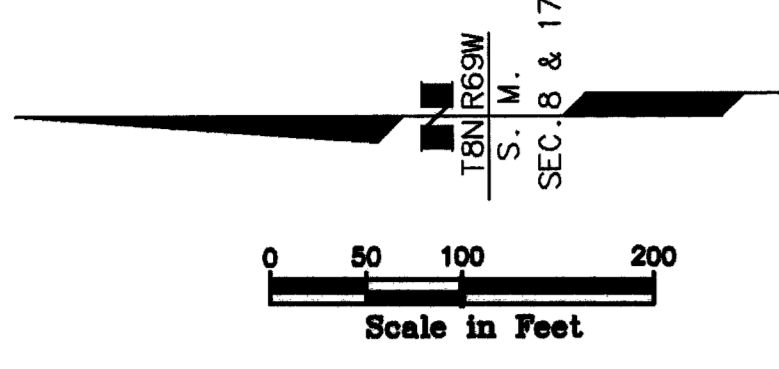
PARCEL NO.	INTEREST ACQUIRED	GRANTOR	GRANTEE	PARCEL AREA	DATE ACQUIRED	BETHEL RECORDING DISTRICT RECORDED DOCUMENT NUMBER	COMMENTS	ACQUIRED UNDER AIP NO.
1	WD - FEE TO SURFACE ESTATE	KWETHLUK INC.	STATE OF ALASKA, DOT/PF	107.018 AC ±	8/28/2001	BK 94 PG 509 CORRECTED TO: 2013-001166-0		3-02-0164-0201 / 53872
	WD - SUBSURFACE ESTATE	CALISTA CORP.				BK 94 PG 505 CORRECTED TO: 2013-000777-0		3-02-0164-0201 / 53872
E-2	EASEMENT-SURFACE	KWETHLUK INC.	STATE OF ALASKA, DOT/PF	23.421 AC ±	8/28/2001	BK 94 PG 518 CORRECTED TO: 2013-001167-0		STP-001(210) / 54297
	EASEMENT-SUBSURFACE	CALISTA CORP.				BK 94 PG 518 CORRECTED TO: 2013-000559-0		STP-0001(210) / 54297
3	TRUSTEE DEED	TOWNSITE TRUSTEE	STATE OF ALASKA, DPW/DOA	70.29 AC ±	10/26/1973	BK 20 PG 159	TRACT D, USS 4221	
	COMMISSIONER'S QCD	STATE OF ALASKA, DOT/PF	CITY OF KWETHLUK	68.84 AC ±	11/16/2012	2013-000120-0	ALL OF TRACT D, EXCEPTING PARCEL 3a	
3a	COMMISSIONER'S QCD	STATE OF ALASKA, DOT/PF	STATE OF ALASKA, DOT/PF	1.446 AC ±	11/16/2012	2013-000120-0	RESERVED 100' FOR ROW	

STATE OF ALASKA
DEPARTMENT OF TRANSPORTATION
&
PUBLIC FACILITIES
RIGHT OF WAY ACQUISITION PLAT
ALASKA PROJECT
54297
KWETHLUK AIRPORT
ACCESS ROAD

6/17/14	UPDATES PER DNR REVIEW	BY	GMS/DHF	DATE	04/02/2013	SCALE	1"=100'
	REVISIONS	BY	PLH	DATE	04/02/2013	SHEET	4 OF 6

W:\Projects\Highways\BETHEL\54297-Kwethluk Airport Access Road\AutoCad Drawings\Plans & Parcels\54297-Kwethluk Airport Access Road ROW Plans 7/11/2014 8:23:28 AM

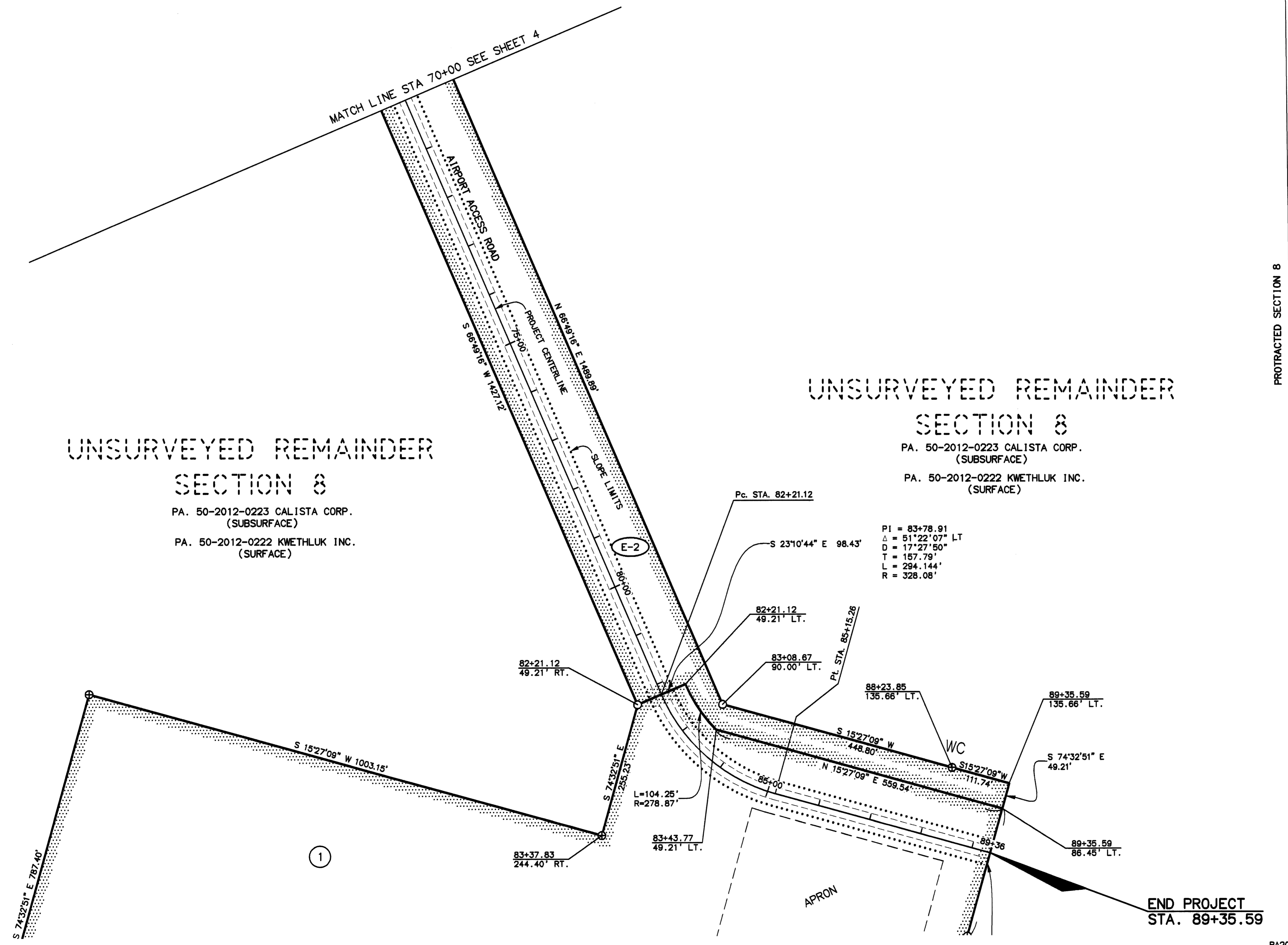
PROJECT DESIGNATION	SHEET NO.	TOTAL SHEETS
STP-0001(210)	R5	R6



UNSURVEYED REMAINDER
SECTION 8
PA. 50-2012-0223 CALISTA CORP.
(SUBSURFACE)
PA. 50-2012-0222 KWETHLUK INC.
(SURFACE)

UNSURVEYED REMAINDER
SECTION 8
PA. 50-2012-0223 CALISTA CORP.
(SUBSURFACE)
PA. 50-2012-0222 KWETHLUK INC.
(SURFACE)

SECTION LOT 3
PA. 50-2012-0223 CALISTA CORP.
(SUBSURFACE)
PA. 50-2012-0222 KWETHLUK INC.
(SURFACE)

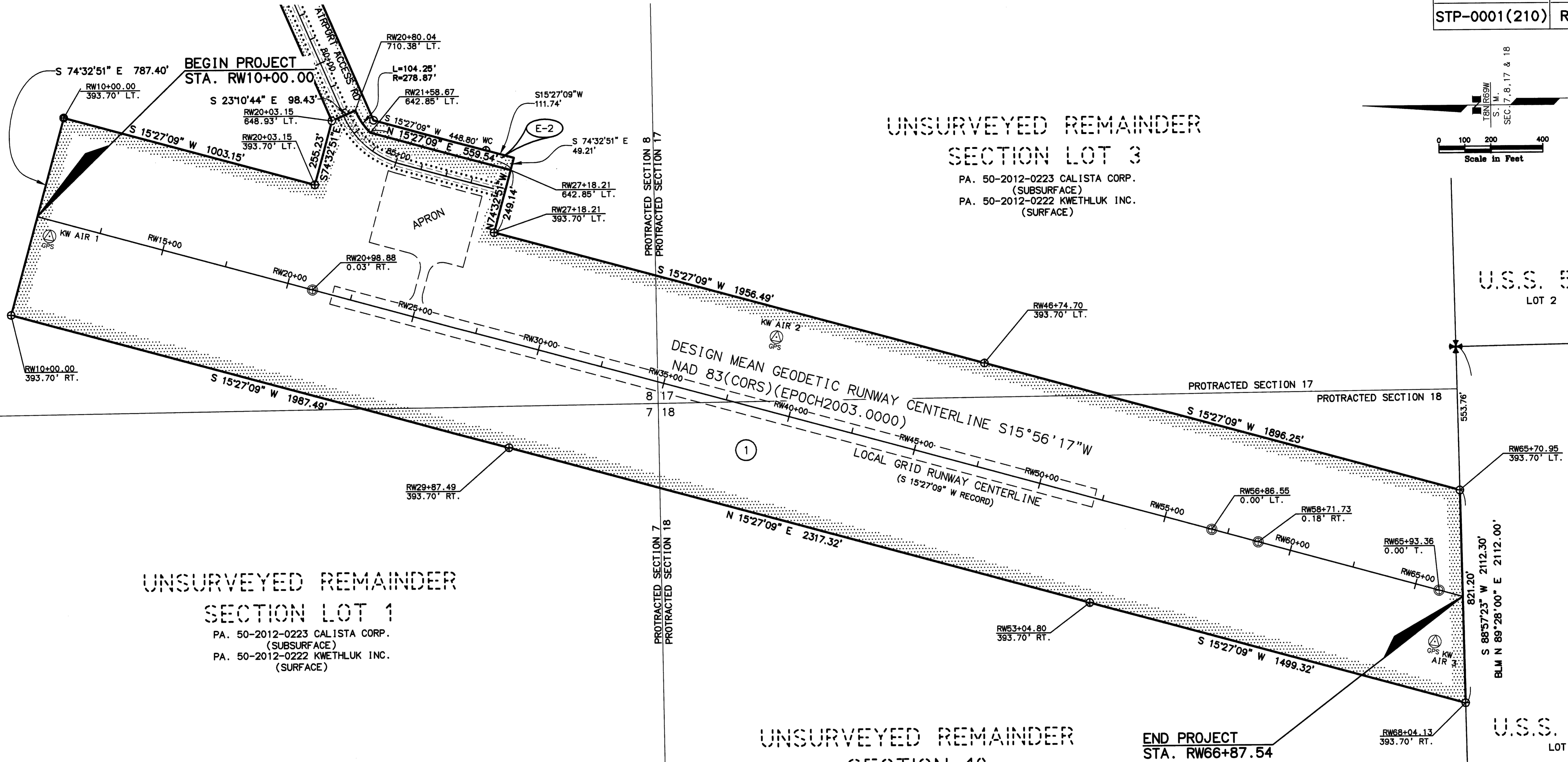
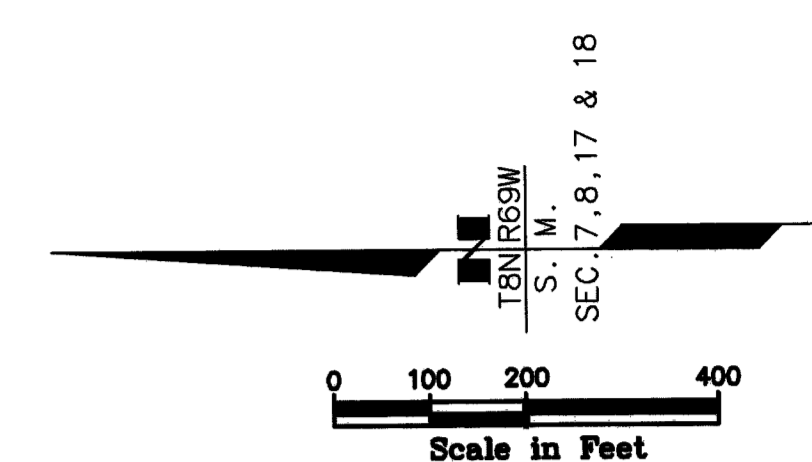


PROTRACTED SECTION 8
PROTRACTED SECTION 17

6/17/14	UPDATES PER DNR REVIEW	
DATE	REVISIONS	BY
STATE OF ALASKA DEPARTMENT OF TRANSPORTATION & PUBLIC FACILITIES RIGHT OF WAY ACQUISITION PLAT ALASKA PROJECT 54297 KWETHLUK AIRPORT ACCESS ROAD		
DRAWN	GMS/DHF	DATE 04/02/2013
CHECKED	PLH	DATE 04/02/2013
		SCALE 1"=100'
		SHEET 5 OF 6

W:\Projects\Highways\BETHEL\54297-Kwethluk Airport Access Road\AutoCad Drawings\Plans & Parcels\54297-Kwethluk Airport Access Road ROW Plans 7/11/2014 8:23:57 AM

PROJECT DESIGNATION	SHEET NO.	TOTAL SHEETS
STP-0001(210)	R6	R6



UNSURVEYED REMAINDER SECTION LOT 1
 PA. 50-2012-0223 CALISTA CORP. (SUBSURFACE)
 PA. 50-2012-0222 KWETHLUK INC. (SURFACE)

UNSURVEYED REMAINDER SECTION LOT 3
 PA. 50-2012-0223 CALISTA CORP. (SUBSURFACE)
 PA. 50-2012-0222 KWETHLUK INC. (SURFACE)

UNSURVEYED REMAINDER SECTION 18
 PA. 50-2012-0223 CALISTA CORP. (SUBSURFACE)
 PA. 50-2012-0222 KWETHLUK INC. (SURFACE)

U.S.S. 5808 LOT 2

U.S.S. 5808 LOT 1

2014-23
 Plat #
 BETHEL
 Rec Dist
 9/8 2014
 Date
 Time 1:27 P.M.

STATE OF ALASKA
 DEPARTMENT OF TRANSPORTATION & PUBLIC FACILITIES
 RIGHT OF WAY ACQUISITION PLAT
 ALASKA PROJECT
 53872
 KWETHLUK AIRPORT

6/17/14	UPDATES PER DNR REVIEW	BY	DATE	04/02/2013	SCALE	1"=200'
	REVISIONS	CHECKED	PLH	DATE	04/02/2013	SHEET 6 OF 6

BETHEL RECORDING DISTRICT

PA20140018

W:\Projects\Highways\BETHEL\54297-Kwethluk Airport Access Road\AutoCad Drawings\Plans & Parcels\54297-Kwethluk Airport Access Road\Plans 7/11/2014 10:46:49 AM