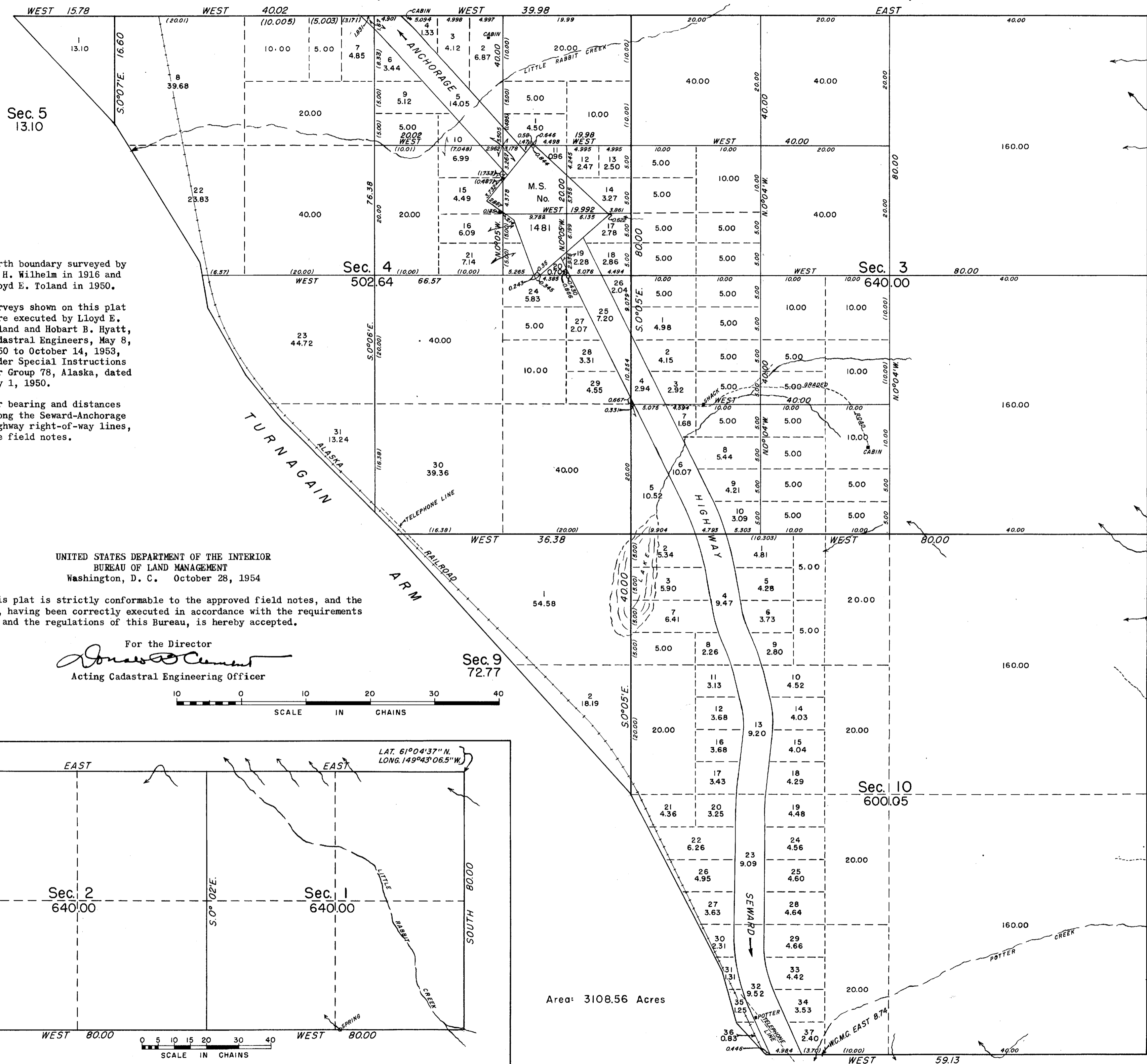
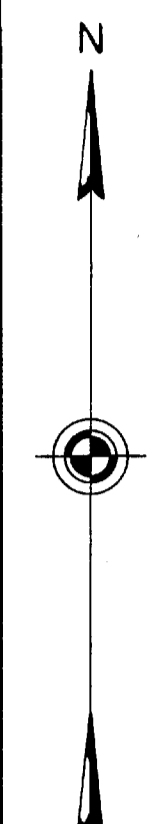


# TOWNSHIP 11 NORTH, RANGE 3 WEST OF THE SEWARD MERIDIAN, ALASKA



North boundary surveyed by V. H. Wilhelm in 1916 and Lloyd E. Toland in 1950.

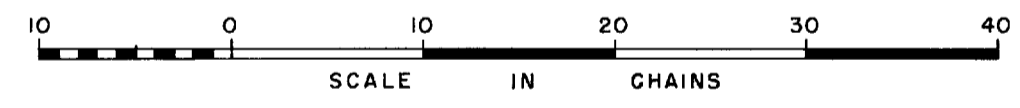
Surveys shown on this plat were executed by Lloyd E. Toland and Hobart B. Hyatt, Cadastral Engineers, May 8, 1950 to October 14, 1953, under Special Instructions for Group 78, Alaska, dated May 1, 1950.

For bearing and distances along the Seward-Anchorage Highway right-of-way lines, see field notes.

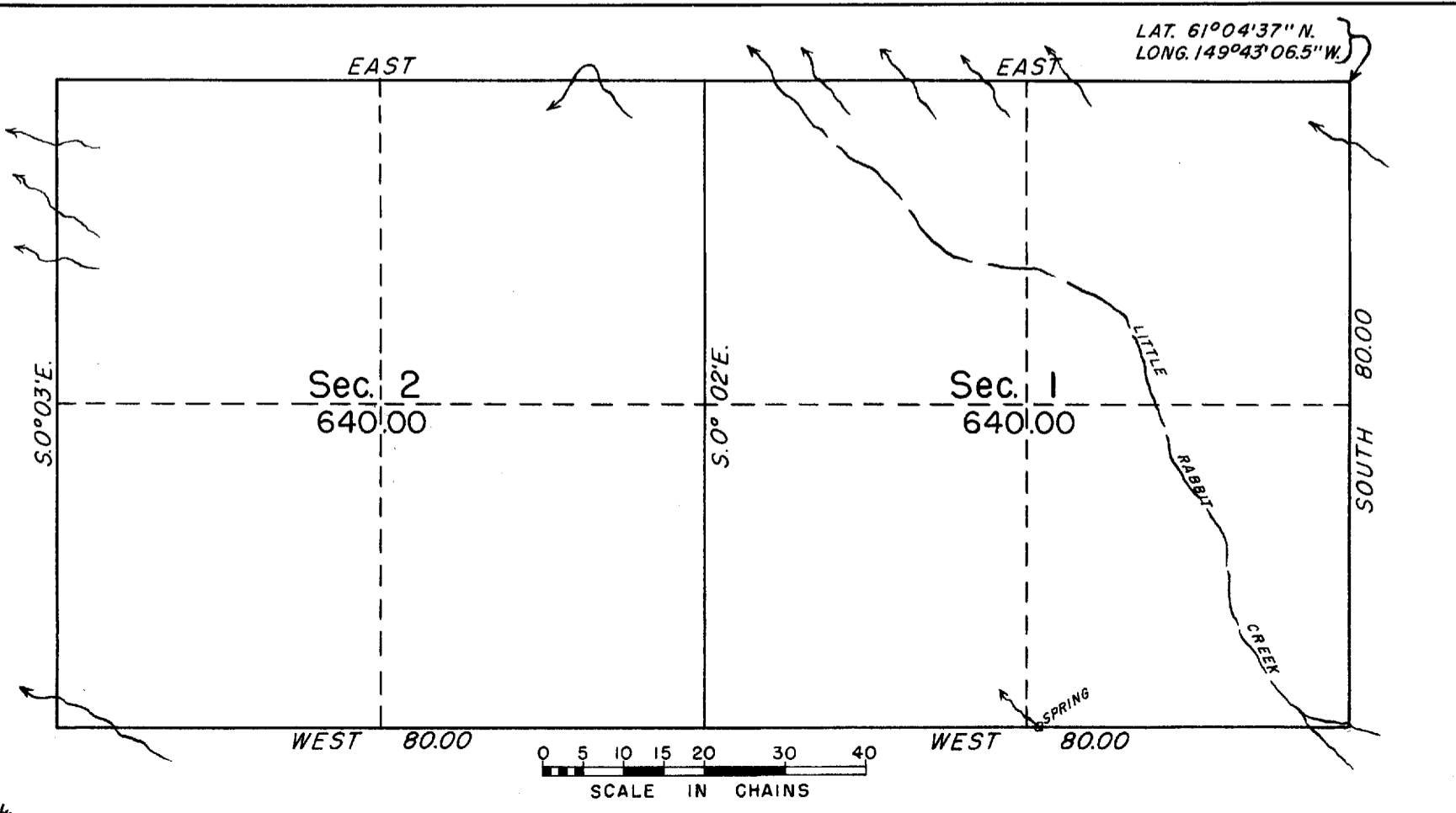
UNITED STATES DEPARTMENT OF THE INTERIOR  
BUREAU OF LAND MANAGEMENT  
Washington, D. C. October 28, 1954

This plat is strictly conformable to the approved field notes, and the survey, having been correctly executed in accordance with the requirements of law and the regulations of this Bureau, is hereby accepted.

For the Director  
*Ronald Clement*  
Acting Cadastral Engineering Officer

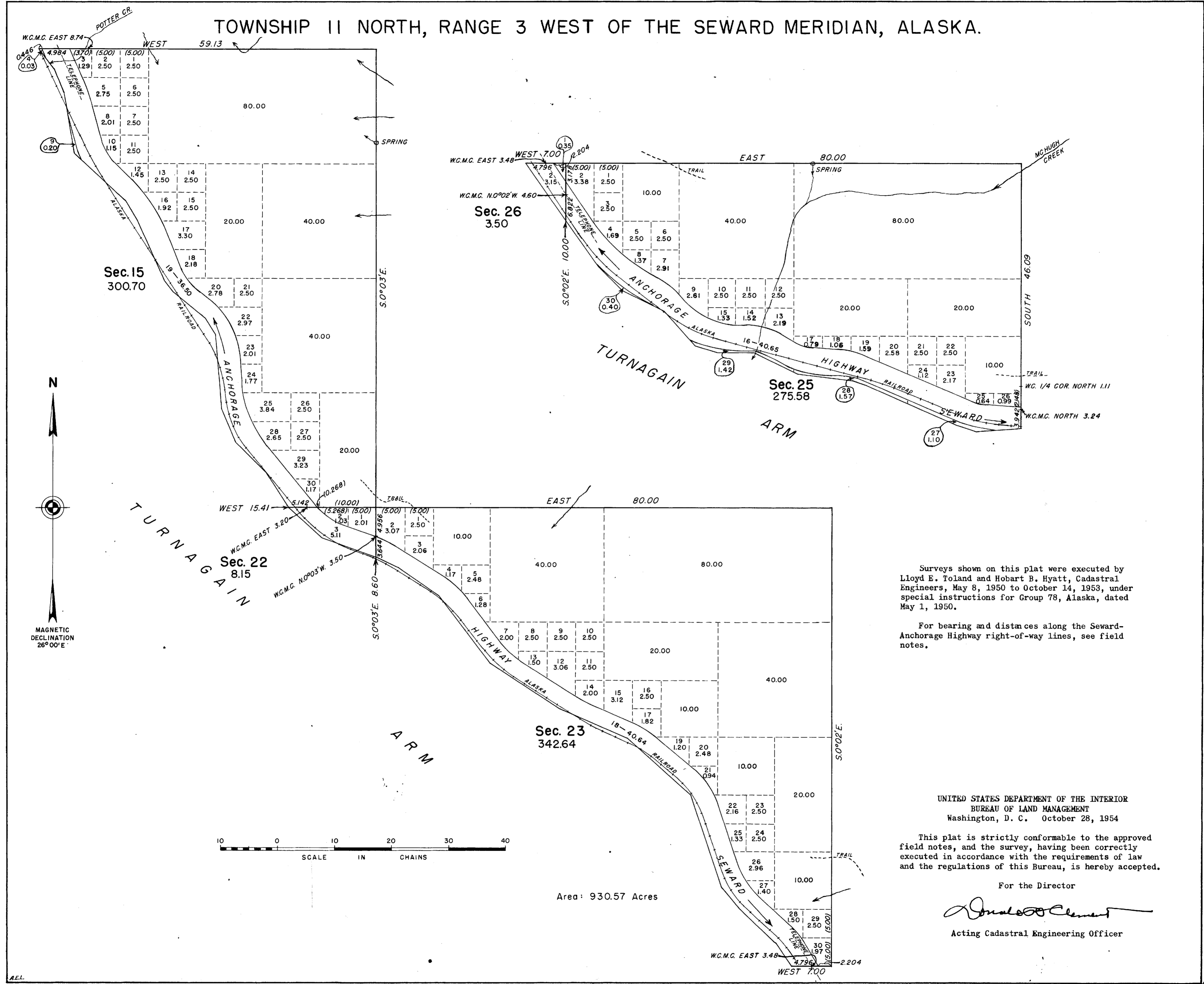


Area: 3108.56 Acres



SEE BELOW LEFT FOR SECTIONS 1 & 2

# TOWNSHIP 11 NORTH, RANGE 3 WEST OF THE SEWARD MERIDIAN, ALASKA.



Surveys shown on this plat were executed by Lloyd E. Toland and Hobart B. Hyatt, Cadastral Engineers, May 8, 1950 to October 14, 1953, under special instructions for Group 78, Alaska, dated May 1, 1950.

For bearing and distances along the Seward-Anchorage Highway right-of-way lines, see field notes.

UNITED STATES DEPARTMENT OF THE INTERIOR  
BUREAU OF LAND MANAGEMENT  
Washington, D. C. October 28, 1954

This plat is strictly conformable to the approved field notes, and the survey, having been correctly executed in accordance with the requirements of law and the regulations of this Bureau, is hereby accepted.

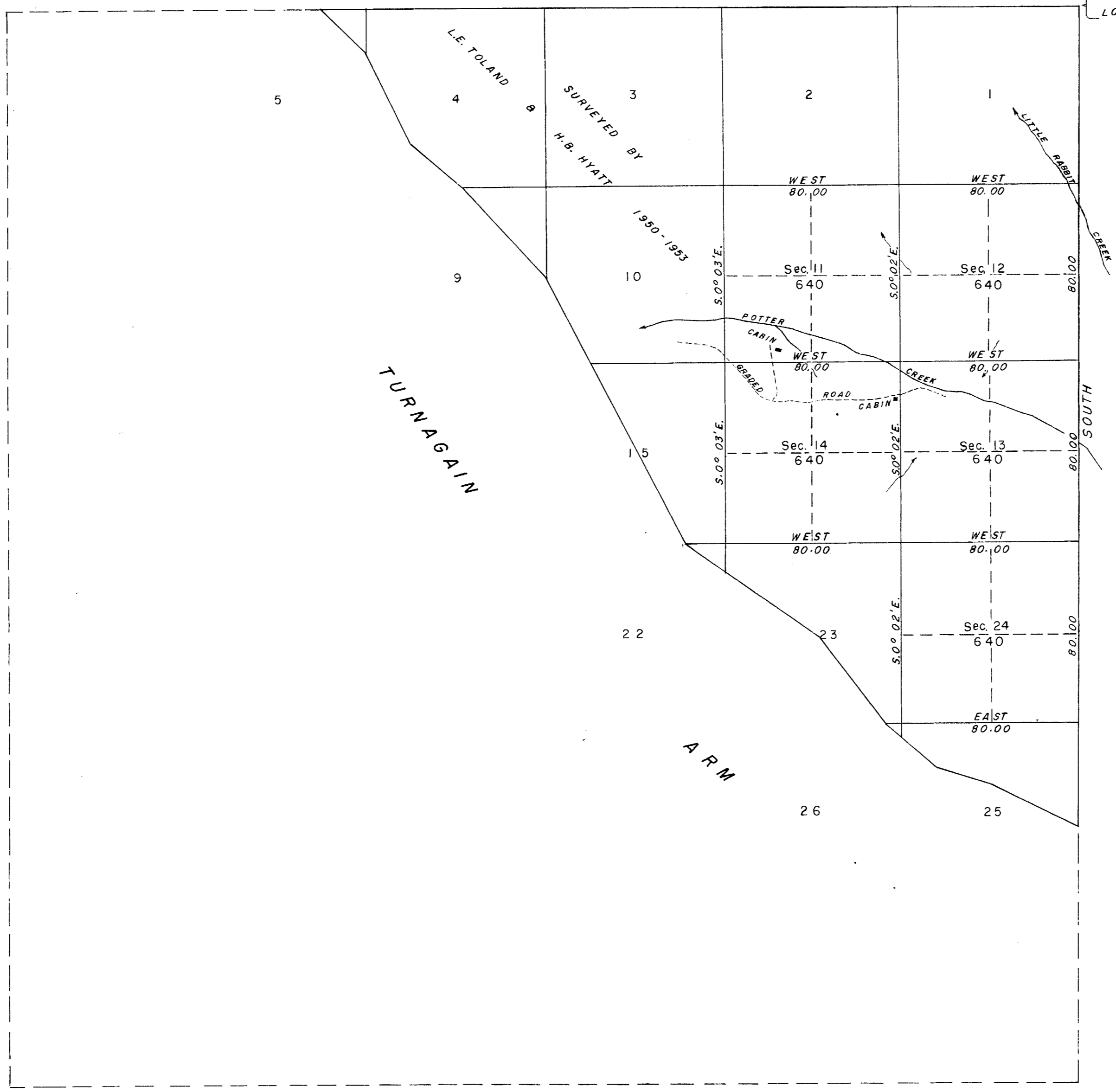
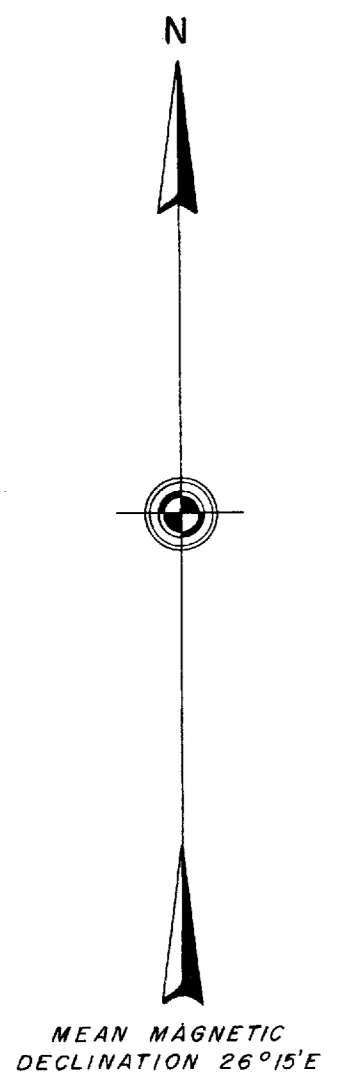
For the Director

*Donald Clement*  
Acting Cadastral Engineering Officer

Area: 930.57 Acres

# TOWNSHIP 11 NORTH, RANGE 3 WEST, OF THE SEWARD MERIDIAN, ALASKA

LATITUDE 61° 04' 37" N.  
LONGITUDE 149° 43' 06.5" W.



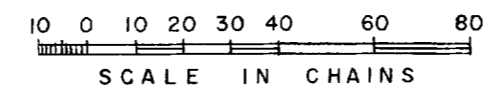
This plat represents an extension of the survey in this township as executed by Hobart B. Hyatt, Cartographer (Cadastral) June 23 to July 13, 1955, under Special Instructions for Group 78, Alaska, dated May 1, 1950.

The previous surveys in this township are shown upon the plats accepted October 28, 1954.

UNITED STATES DEPARTMENT OF THE INTERIOR  
BUREAU OF LAND MANAGEMENT  
Washington, D. C. February 26, 1957

This plat is strictly conformable to the approved field notes, and the survey, having been correctly executed in accordance with the requirements of law and the regulations of this Bureau, is hereby accepted.

For the Director  
*Carl G. Harrington*  
Cadastral Engineering Staff Officer



Area Surveyed: 3200 Acres