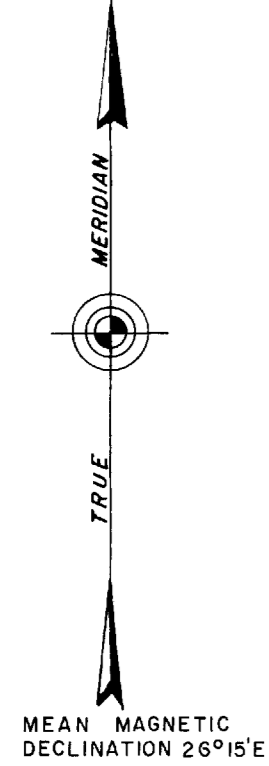
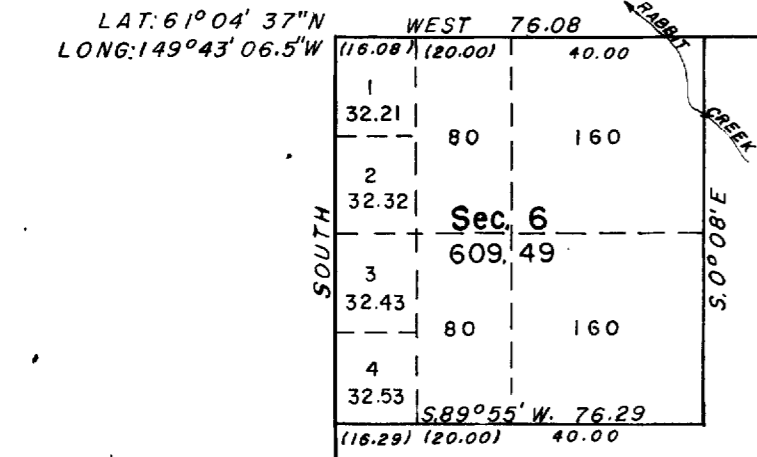


TOWNSHIP 11 NORTH, RANGE 2 WEST, OF THE SEWARD MERIDIAN, ALASKA



UNSURVEYED

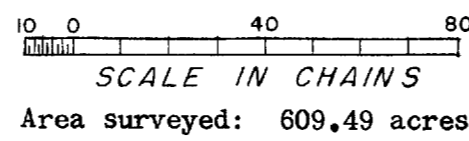
The land embraced in this survey is located on a westerly slope of the Chugach Mountain Range. The timber is spruce along the West boundary of Section 6.

Survey executed by Hobart B. Hyatt, Cartographer (Cadastral), July 18 to 20, 1955, under Special Instructions for Group 78, Alaska, dated May 1, 1950.

UNITED STATES DEPARTMENT OF THE INTERIOR
BUREAU OF LAND MANAGEMENT
Washington, D. C. April 15, 1957

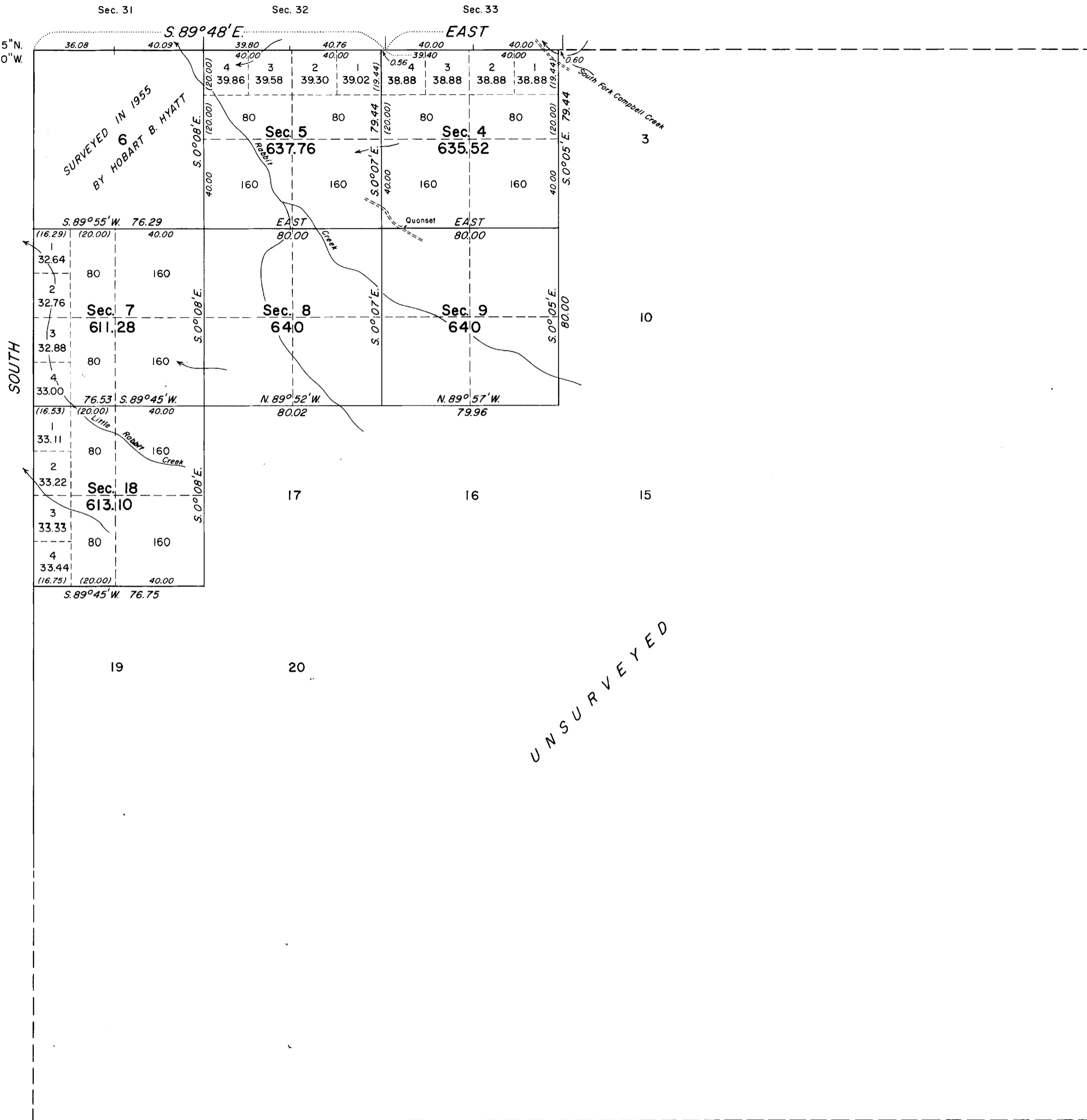
This plat is strictly conformable to the approved field notes, and the survey, having been correctly executed in accordance with the requirements of law and the regulations of this Bureau, is hereby accepted.

For the Director
Carl G. Harrington
Cadastral Engineering Staff Officer

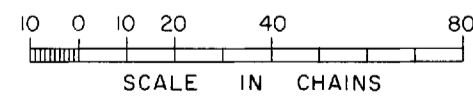


TOWNSHIP 11 NORTH, RANGE 2 WEST, OF THE SEWARD MERIDIAN, ALASKA

Approx. Lat. 61°04'45"N.
Approx. Long. 149°43'00"W.



Area Surveyed: 3,777.66 Acres



This plat represents a retracement and reestablishment of a portion of the north boundary designed to restore the corners in their true original locations according to the best available evidence and the survey of a portion of the north boundary and a portion of the subdivisional lines of Township 11 North, Range 2 West, Seward Meridian, Alaska.

The history of previous surveys is contained in the field note record.

These surveys were executed by Hobart B. Hyatt, beginning July 23, 1962, and completed September 5, 1962, pursuant to Supplemental Special Instructions for Group No. 78, Alaska, dated April 27, 1962.

UNITED STATES DEPARTMENT OF THE INTERIOR
BUREAU OF LAND MANAGEMENT
Washington, D. C. December 5, 1963

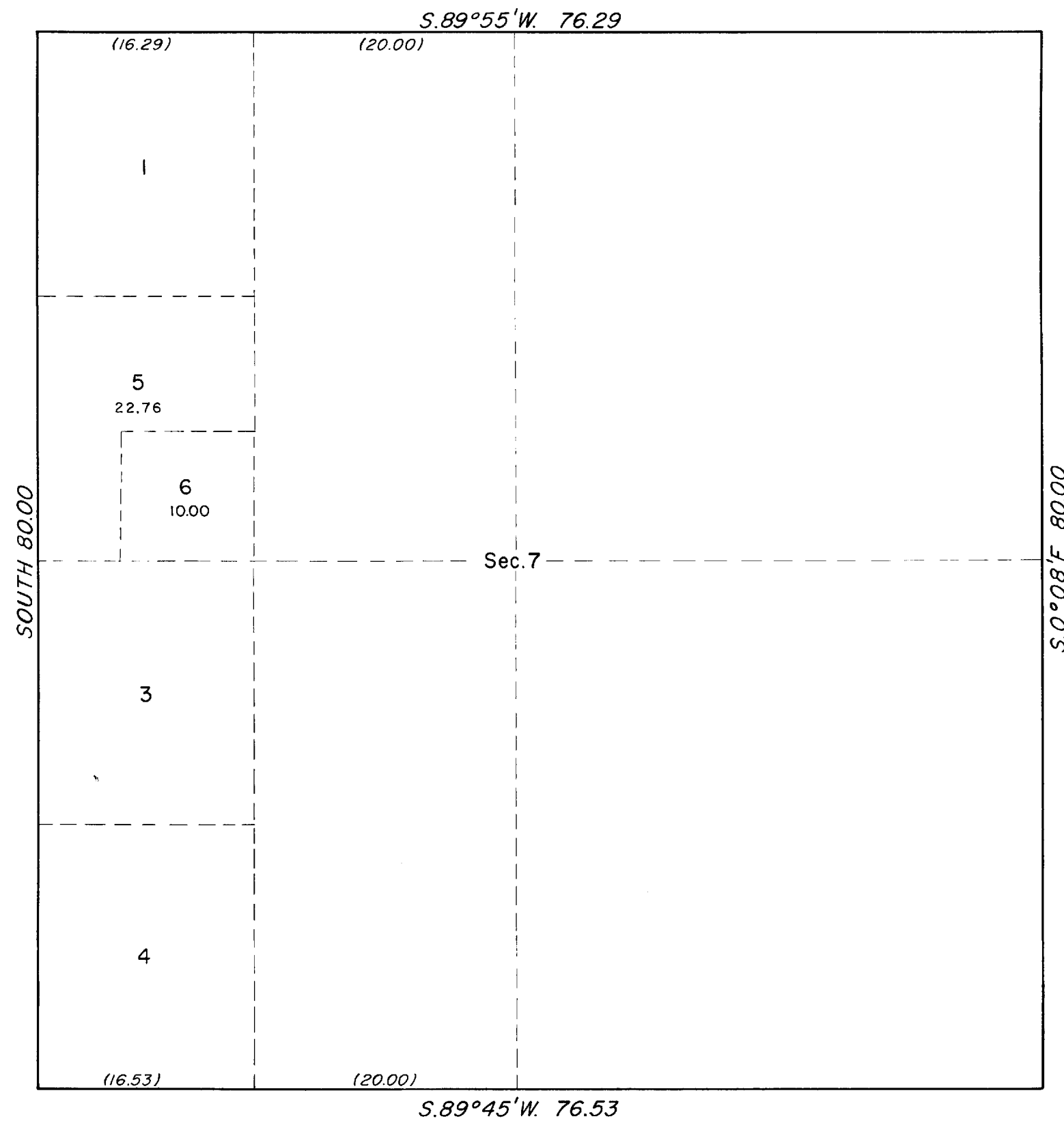
This plat is strictly conformable to the approved field notes, and the survey, having been correctly executed in accordance with the requirements of law and the regulations of this Bureau, is hereby accepted.

For the Director

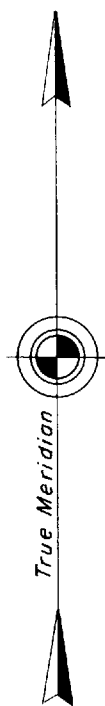
Chief, Division of Engineering

TOWNSHIP 11 NORTH, RANGE 2 WEST, OF THE SEWARD MERIDIAN, ALASKA

SUPPLEMENTAL PLAT OF SECTION 7



This supplemental plat of section 7, T. 11 N., R. 2 W., Seward Meridian, shows amended lottings based upon the plat of survey accepted December 5, 1963.



UNITED STATES DEPARTMENT OF THE INTERIOR
BUREAU OF LAND MANAGEMENT
Washington, D. C. June 11, 1965

This plat, showing amended lottings, is based upon the official records, and having been correctly prepared in accordance with the regulations, is hereby accepted.

For the Director

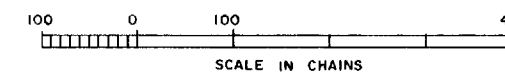
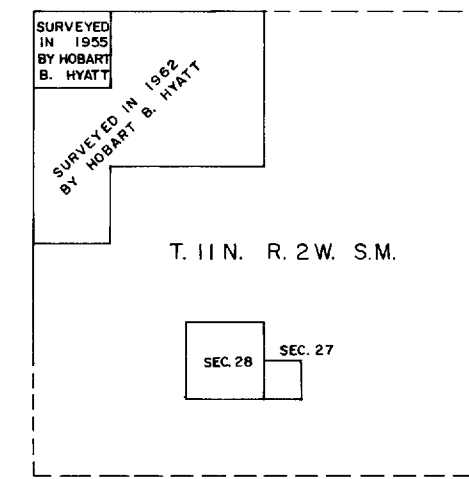
Clark F. Gumm

Acting Chief, Division of Engineering

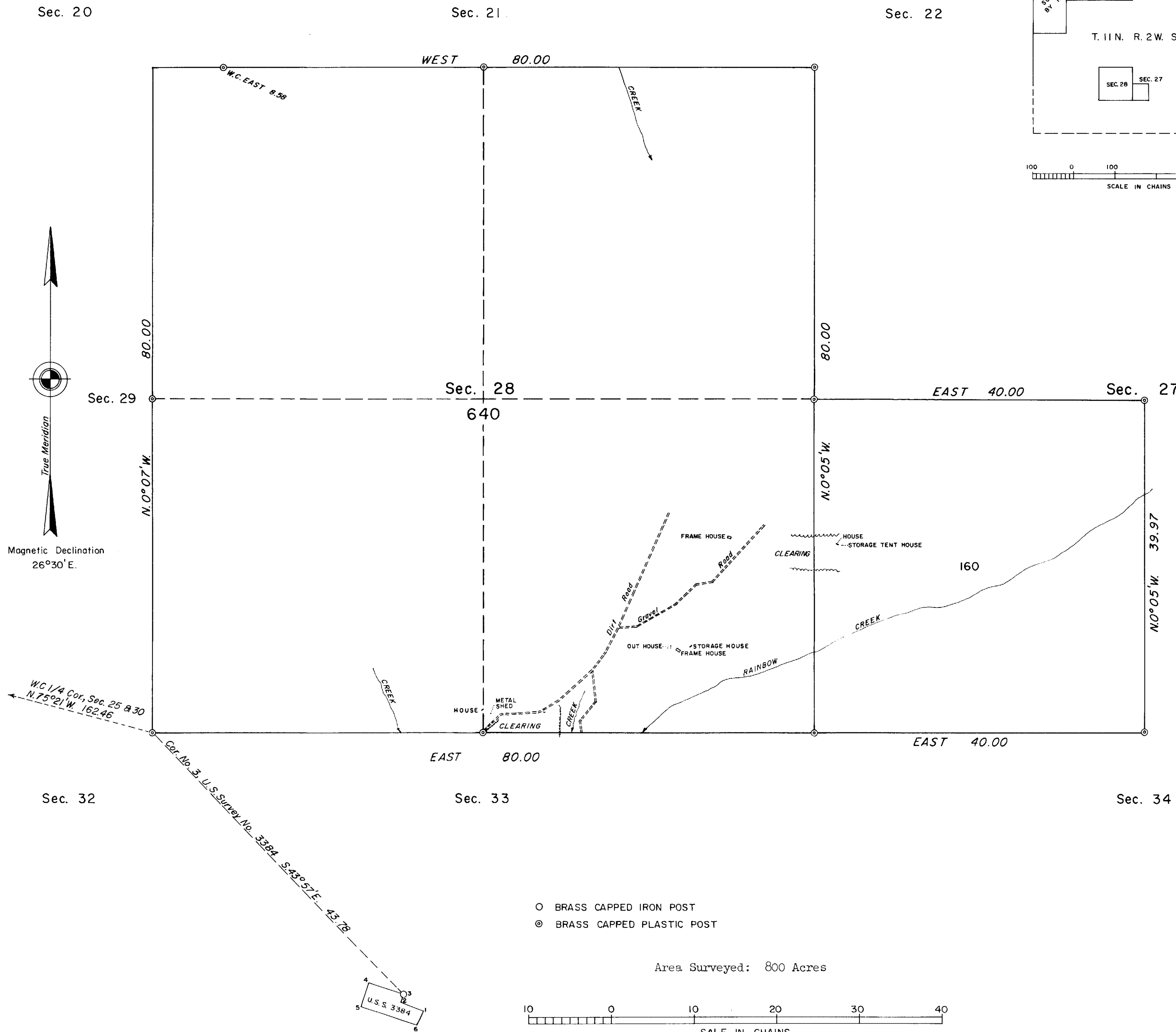


TOWNSHIP 11 NORTH, RANGE 2 WEST, OF THE SEWARD MERIDIAN, ALASKA

LOCATION DIAGRAM



The survey of section 28 and the SW $\frac{1}{4}$ of section 27, T. 11 N., R. 2 W., of the Seward Meridian, Alaska, was executed by C. Norman Brown, Cadastral Surveyor, May 18 through June 17, 1966, under Special Instructions dated May 24, 1966, and approved May 25, 1966, for Group No. 78, Alaska.



UNITED STATES DEPARTMENT OF THE INTERIOR
BUREAU OF LAND MANAGEMENT
Washington, D. C. November 25, 1966

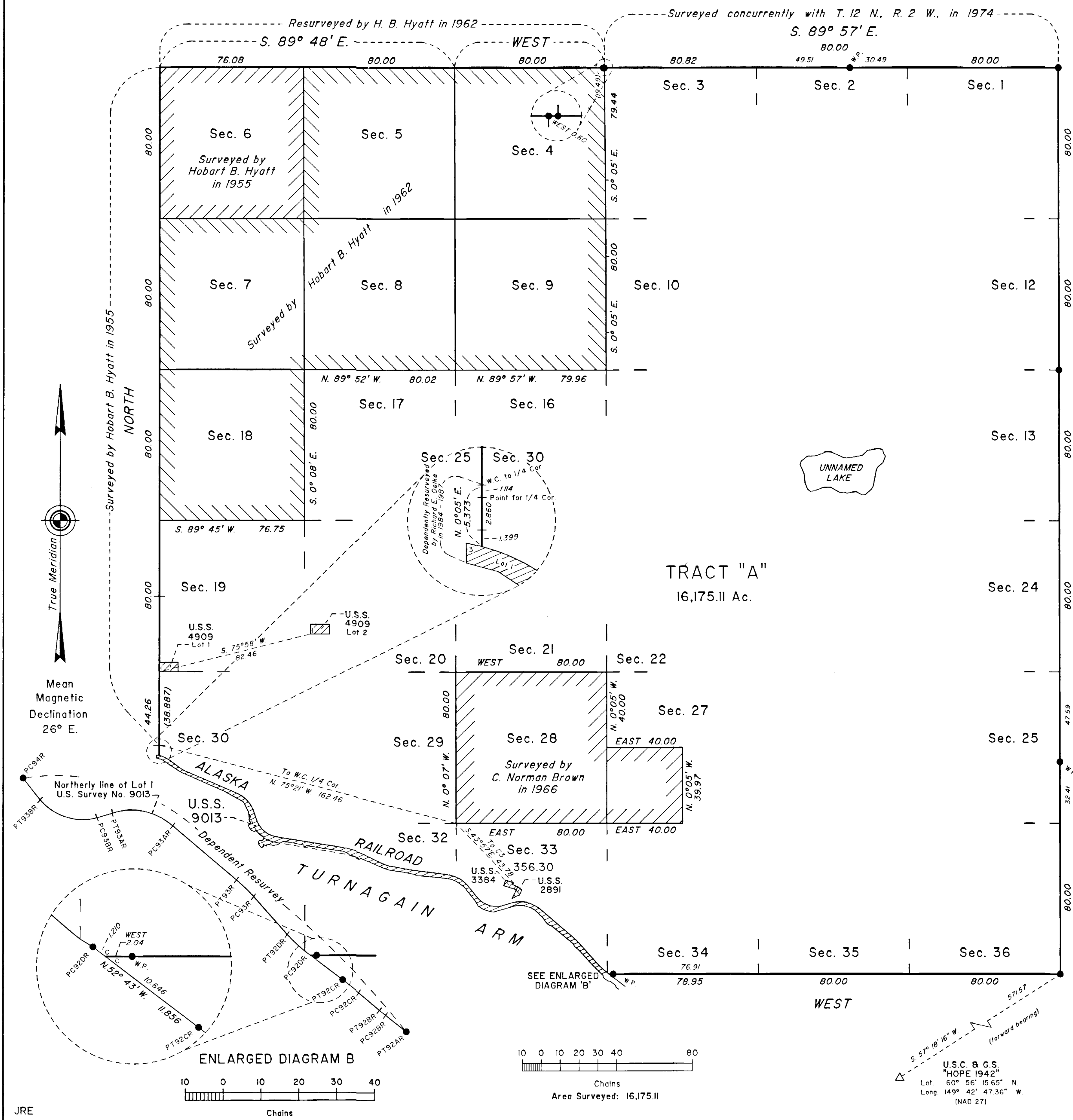
This plat is strictly conformable to the approved field notes, and the survey, having been correctly executed in accordance with the requirements of law and the regulations of this Bureau, is hereby accepted.

For the Director

R. B. Brown

Chief, Division of Engineering

TOWNSHIP 11 NORTH, RANGE 2 WEST, OF THE SEWARD MERIDIAN, ALASKA



The history of surveys is contained in the field notes.

This plat and the field notes represent the dependent resurvey of a portion of U.S. Survey No. 9013; the survey of the south boundary and the east boundary; and the meanders of Township 11 North, Range 2 West, Seward Meridian, Alaska.

This survey was executed by John M. Baldessari, Cadastral Surveyor, September 10, 1974, through September 23, 1978, in accordance with the specifications set forth in the Manual of Surveying Instructions, 1973, Special Instructions for Group No. 178, Alaska, dated June 19, 1974, approved July 5, 1974, and Amended Special Instructions dated July 23, 1974, approved July 23, 1974, and Assignment Instructions dated August 23, 1974, and July 1, 1975.

The hydrography shown on this plat identifies the meanders along the mean high tide line and ordinary high water line of water bodies segregated from the land area. The meanders are photogrammetrically interpreted and digitized from color infrared photography flown in July 1978 and August 1984 and black and white orthophotography flown in August 1984 by the National Aeronautics and Space Administration. The digital meander line data pictorially represent the meanders used to calculate the areas shown on this plat.

Acceptance of this survey does not purport to transfer any interest in submerged lands to which the state of Alaska is entitled under the Equal Footing Doctrine and Section 6(m) of the Alaska Statehood Act, P.L. 85-508, notwithstanding the use, location, or absence of meander lines to depict water bodies.

UNITED STATES DEPARTMENT OF THE INTERIOR
BUREAU OF LAND MANAGEMENT
Anchorage, Alaska

This plat is strictly conformable to the approved field notes, and the survey, having been correctly executed in accordance with the requirements of law and the regulations of this Bureau, is hereby accepted.

For the Director
John A. Pinkerton
Deputy State Director for Cadastral Survey,
Alaska
Date JANUARY 26, 2000

Latitude 60° 59' 36.73" N.
Longitude 149° 32' 04.84" W.
(NAD 27)

U.S.C. & G.S.
"HOPE 1942"
Lat. 60° 56' 15.65" N
Long. 149° 42' 47.36" W
(NAD 27)

10 0 10 20 30 40
Chains
Area Surveyed: 16,175.11

ENLARGED DIAGRAM B
10 0 10 20 30 40
Chains

mwb